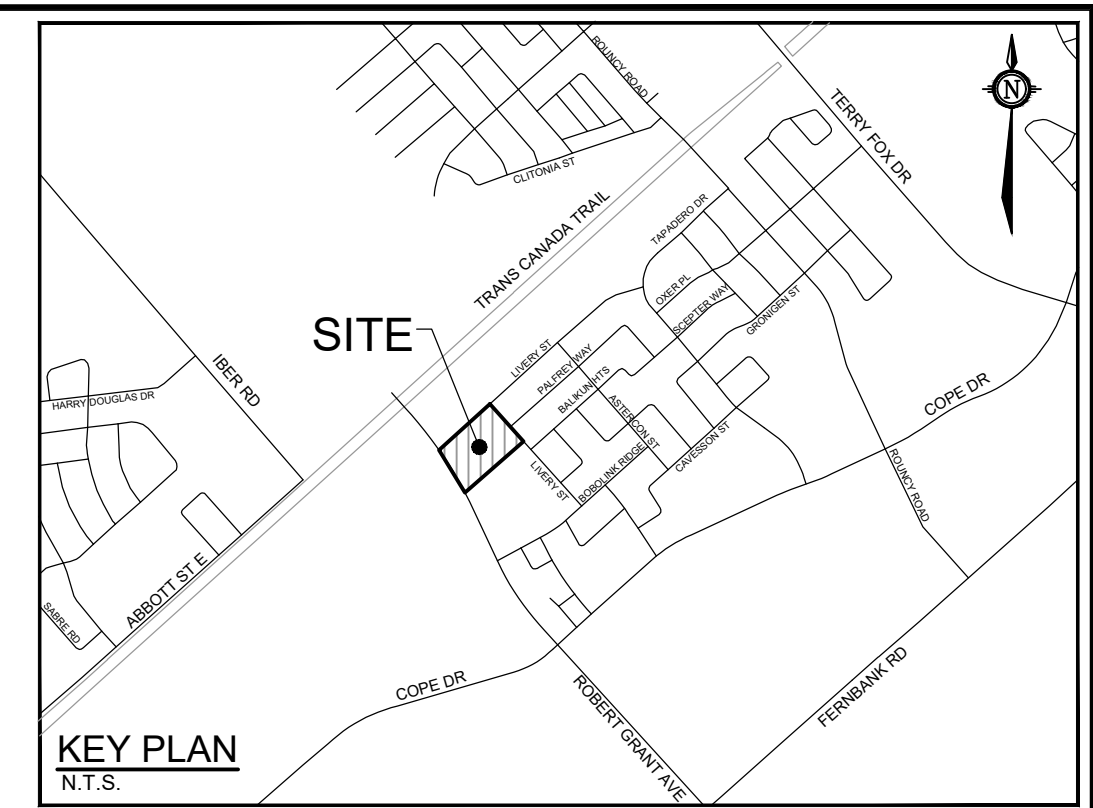


THIS PLAN IS TO BE READ IN CONJUNCTION WITH CIVIL PLANS 117151-DET AND 117151-GR



KEY PLAN N.T.S.

BENCHMARK INFO: OLS JOB BENCHMARK ON THE TOP OF SPINDLE OF THE EXISTING MUNICIPAL FIRE HYDRANT LOCATED NEAR THE NORTH-EAST CORNER...

INLET CONTROL DEVICE DATA TABLE: AREA A-2 (OUTLET PIPE OF CBMH 01) with columns for DESIGN EVENT, ICD TYPE, DIAMETER, PEAK DESIGN FLOW, etc.

- LEGEND: SITE BOUNDARY, PROPOSED LIMITS OF UNDERGROUND PARKING STRUCTURE, PROPOSED STORM MANHOLE, etc.

GENERAL NOTES:

- 1. COORDINATE AND SCHEDULE ALL WORK WITH OTHER TRADES AND CONTRACTORS. 2. DETERMINE THE EXACT LOCATION, SIZE, MATERIAL AND ELEVATION OF ALL EXISTING UTILITIES...

SEWER NOTES:

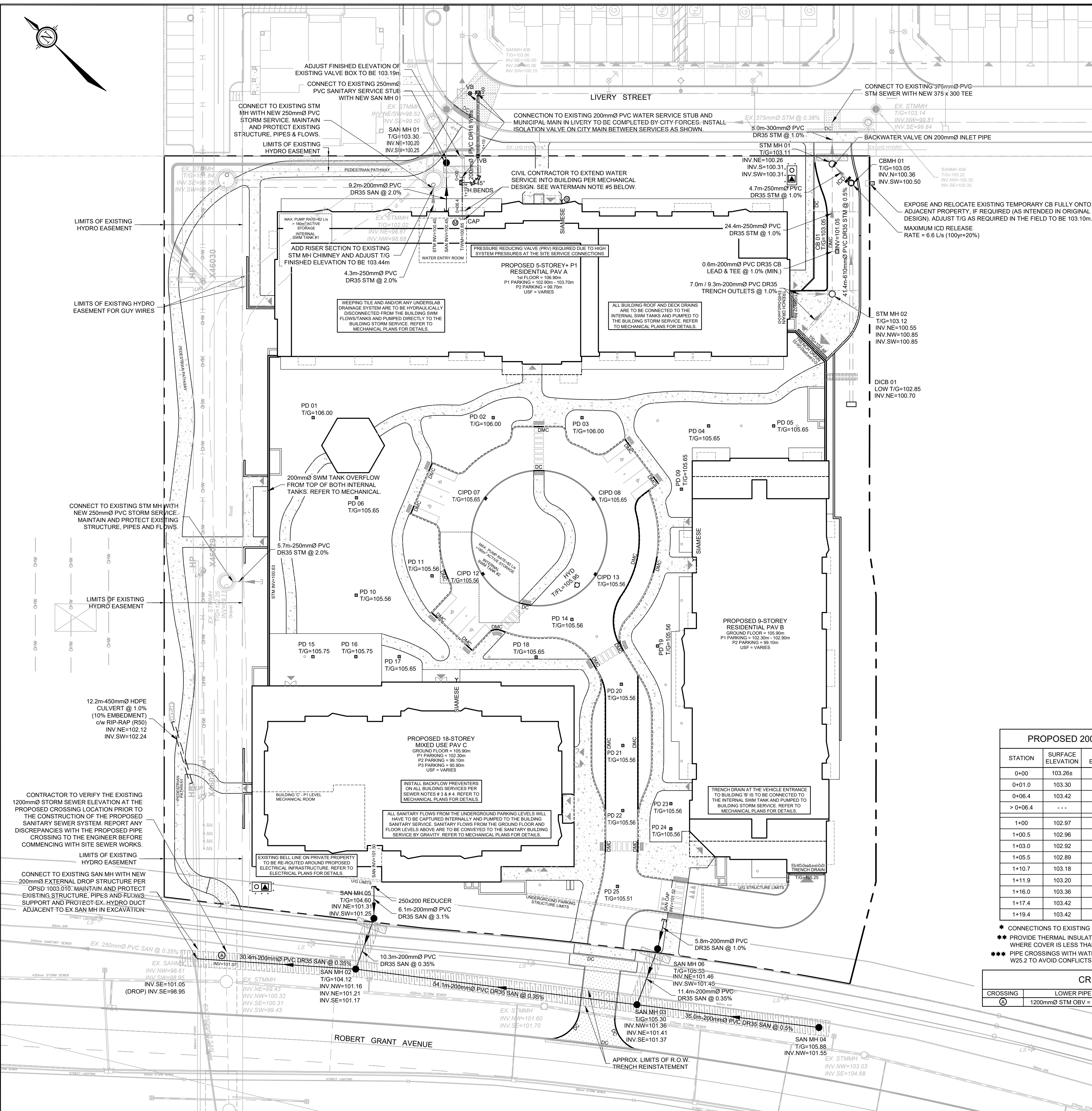
- 1. SUPPLY AND CONSTRUCT ALL SEWERS AND APPURTENANCES IN ACCORDANCE WITH THE MOST CURRENT CITY OF OTTAWA STANDARDS AND SPECIFICATIONS...

WATERMAIN NOTES:

- 1. SUPPLY AND CONSTRUCT ALL WATERMANS AND APPURTENANCES IN ACCORDANCE WITH THE CITY OF OTTAWA STANDARDS AND SPECIFICATIONS...

PROPOSED 200mmØ WATERMAIN / REDUNDANT SERVICE TABLE with columns for STATION, SURFACE ELEVATION, T/W/E ELEVATION, COMMENTS.

CRITICAL SEWER PIPE CROSSING TABLE with columns for CROSSING, LOWER PIPE, HIGHER PIPE, CLEARANCE, SURFACE ELEVATION.



Revision table with columns for No., REVISION, DATE, BY.

SCALE: 1:400 and a graphical scale bar.

FOR REVIEW ONLY stamp with professional engineer signature and details.

NOVATECH logo and project information including location, drawing name, and contact details.

D07-12-21-0232