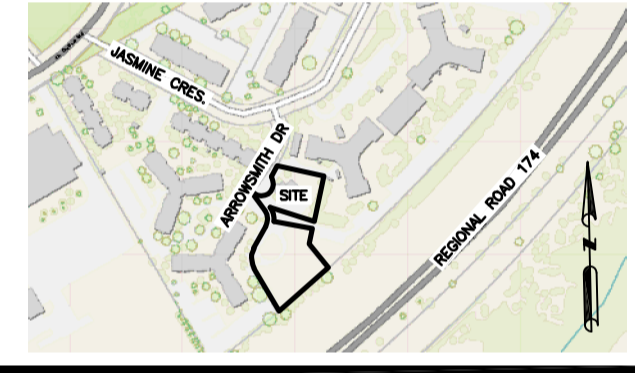


REFER TO NOTES, DETAILS & SCHEDULES ON DRAWINGS C-10, C-11 & C-12

LEGEND

- FFL FINISHED FLOOR ELEVATION
- TOF TOP OF FOUNDATION
- BFL BASEMENT FLOOR ELEVATION
- USF UNDERSIDE OF FOOTING
- PROPERTY LINE
- - - C.R.Z. CRITICAL ROOT ZONE
- CB [] CATCH-BASIN
- MH (O) STORM MANHOLE
- CB/MH (O) CATCH-BASIN/MANHOLE
- MH (O) SANITARY MANHOLE
- FH (H) FIRE HYDRANT
- FDC (Y) FIRE DEPARTMENT CONNECTION
- VB (V) VALVE & VALVE BOX
- (M) WATER METER
- (R) REMOTE WATER METER
- SAN [] SANITARY SEWER
- ST [] STORM SEWER
- WS/WM [] WATER SERVICE/WATERMAIN

KEY PLAN

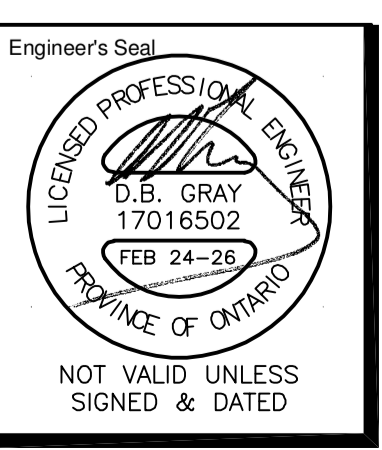


No.	DATE	REVISION
7	FEB 24-26	RE-ISSUED FOR APPROVAL
6	JAN 27-26	ISSUED FOR TENDER
5	DEC 10-25	RE-ISSUED FOR APPROVAL
4	JAN 17-25	ISSUED FOR ZONING
3	DEC 6-24	ISSUED FOR BUILDING PERMIT
2	DEC 21-22	ISSUED FOR APPROVAL
1	DEC 19-22	ISSUED FOR COORDINATION

D. B. GRAY ENGINEERING INC.
 Stormwater Management - Grading & Drainage - Storm & Sanitary Sewers - Watermain
 700 Long Point Circle 613-425-8044
 Ottawa, Ontario d.gray@dbgrayengineering.com

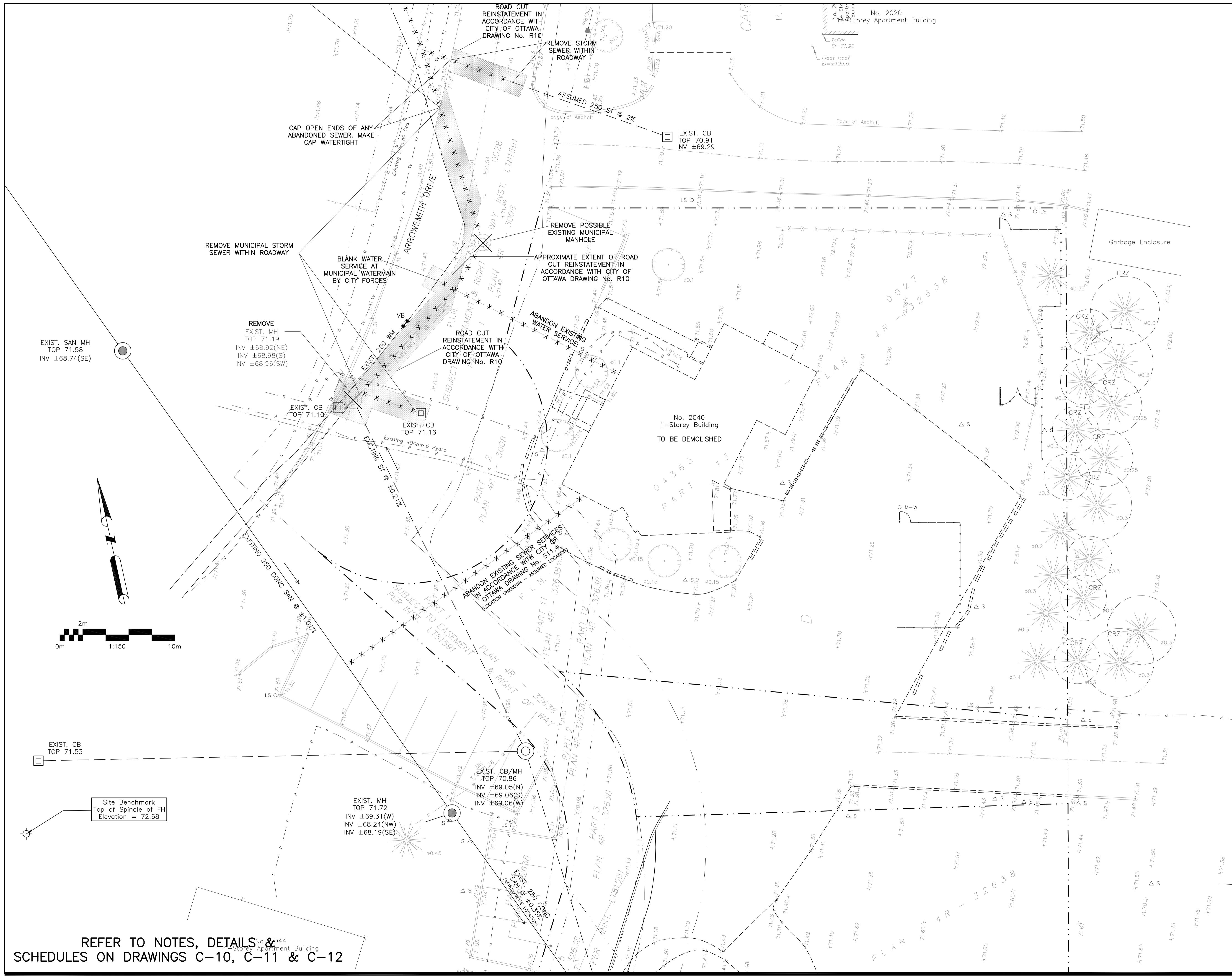
Project
PROPOSED 6-STORY MIXED-USE BUILDING
2040 ARROWSMITH DRIVE
 OTTAWA, ONTARIO

Drawing Title
EXISTING CONDITIONS, REMOVALS & ABANDONMENT PLAN
 (ARROWSMITH DR STORM SEWER)



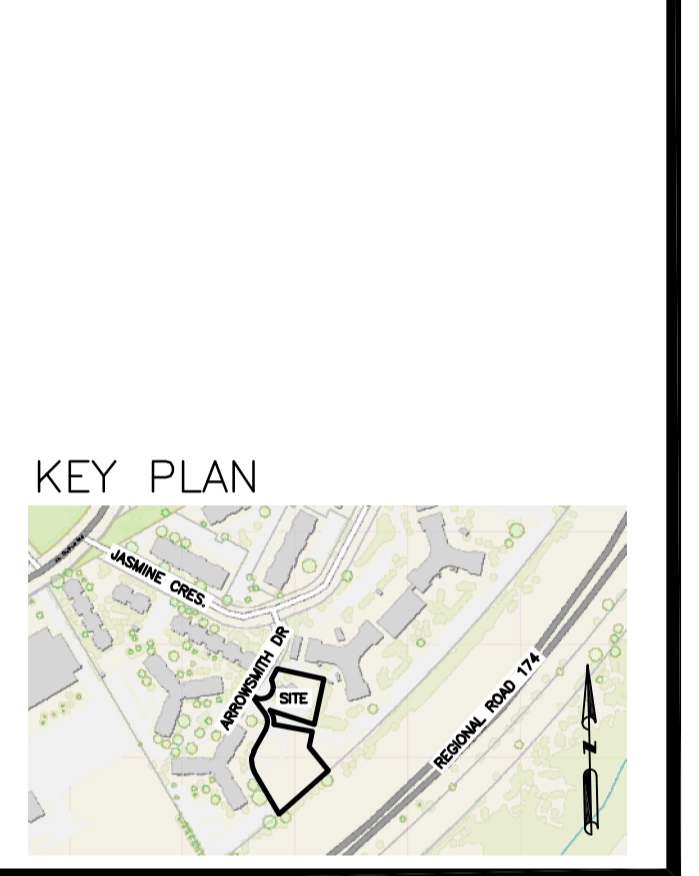
Drawn D.B.G.
 H. Scale 1:150
 V. Scale
 Date NOV 29-22
 Job No. 22062

Drawing No.
C-5
 of 18



LEGEND

- F.F.L. FINISHED FLOOR ELEVATION
- T.O.F. TOP OF FOUNDATION
- B.F.L. BASEMENT FLOOR ELEVATION
- U.S.F. UNDERSIDE OF FOOTING
- PROPERTY LINE
- C.R.Z. CRITICAL ROOT ZONE
- CB [Symbol] CATCH-BASIN
- MH [Symbol] STORM MANHOLE
- CB/MH [Symbol] CATCH-BASIN/MANHOLE
- MH [Symbol] SANITARY MANHOLE
- FH [Symbol] FIRE HYDRANT
- FDC [Symbol] FIRE DEPARTMENT CONNECTION
- VB [Symbol] VALVE & VALVE BOX
- [Symbol] WATER METER
- [Symbol] REMOTE WATER METER
- SAN [Symbol] SANITARY SEWER
- ST [Symbol] STORM SEWER
- WS/WM [Symbol] WATER SERVICE/WATERMAIN

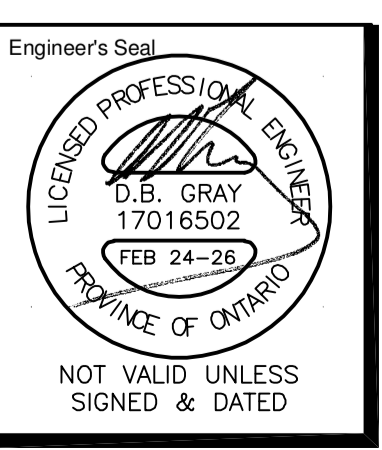


No.	DATE	REVISION
7	FEB 24-26	RE-ISSUED FOR APPROVAL
6	JAN 27-26	ISSUED FOR TENDER
5	DEC 10-25	RE-ISSUED FOR APPROVAL
4	JAN 17-25	ISSUED FOR ZONING
3	DEC 6-24	ISSUED FOR BUILDING PERMIT
2	DEC 21-22	ISSUED FOR APPROVAL
1	DEC 19-22	ISSUED FOR COORDINATION

D. B. GRAY ENGINEERING INC.
 Stormwater Management - Grading & Drainage - Storm & Sanitary Sewers - Watermain
 700 Long Point Circle 613-425-8044
 Ottawa, Ontario d.gray@dbgrayengineering.com

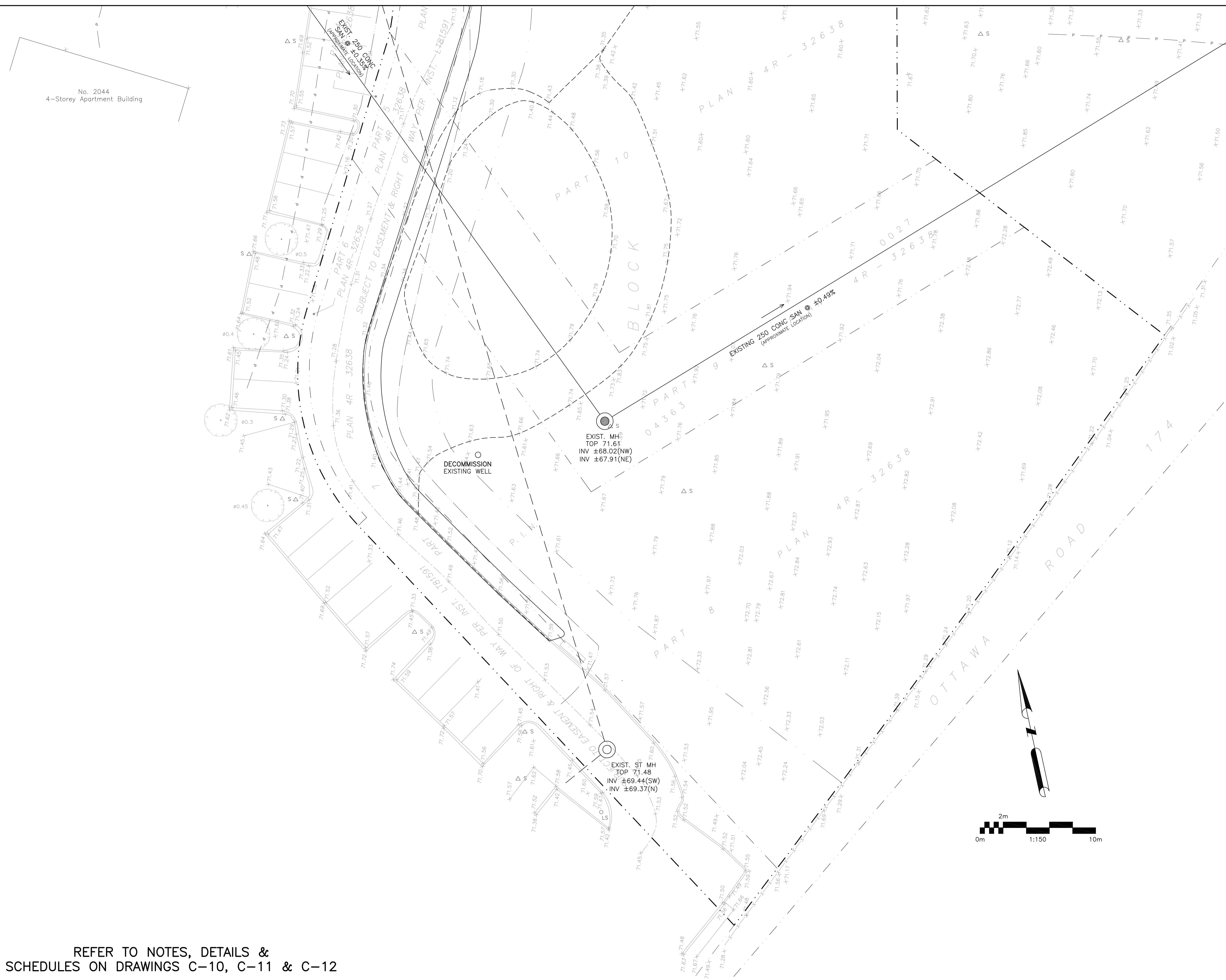
Project
PROPOSED 6-STORY MIXED-USE BUILDING
2040 ARROWSMITH DRIVE
 OTTAWA, ONTARIO

Drawing Title
EXISTING CONDITIONS, REMOVALS & ABANDONMENT PLAN (NORTH)



Engineer's Seal
 Drawn D.B.G.
 H. Scale 1:150
 V. Scale
 Date NOV 29-22
 Job No. 22062
 Drawing No.
C-6
 of 18

REFER TO NOTES, DETAILS & SCHEDULES ON DRAWINGS C-10, C-11 & C-12



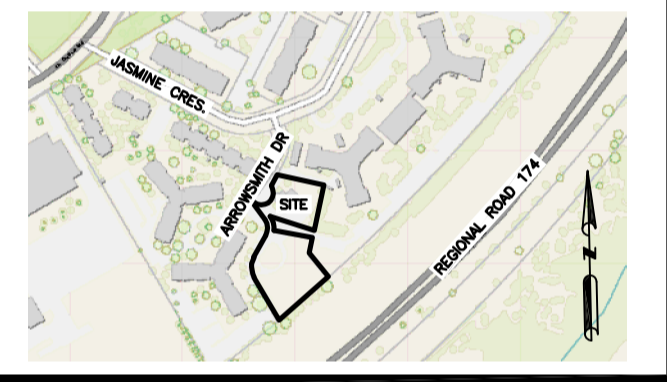
No. 2044
4-Storey Apartment Building

REFER TO NOTES, DETAILS &
SCHEDULES ON DRAWINGS C-10, C-11 & C-12

LEGEND

- F.F.L FINISHED FLOOR ELEVATION
- T.O.F TOP OF FOUNDATION
- B.F.L BASEMENT FLOOR ELEVATION
- U.S.F UNDERSIDE OF FOOTING
- PROPERTY LINE
- - - C.R.Z CRITICAL ROOT ZONE
- CB [] CATCH-BASIN
- MH () STORM MANHOLE
- CB/MH () CATCH-BASIN/MANHOLE
- MH () SANITARY MANHOLE
- FH () FIRE HYDRANT
- FDC Y FIRE DEPARTMENT CONNECTION
- VB [] VALVE & VALVE BOX
- (M) WATER METER
- (R) REMOTE WATER METER
- - - SAN SANITARY SEWER
- - - ST STORM SEWER
- - - WS/WM WATER SERVICE/WATERMAIN

KEY PLAN



No.	DATE	REVISION
7	FEB 24-26	RE-ISSUED FOR APPROVAL
6	JAN 27-26	ISSUED FOR TENDER
5	DEC 10-25	RE-ISSUED FOR APPROVAL
4	JAN 17-25	ISSUED FOR ZONING
3	DEC 6-24	ISSUED FOR BUILDING PERMIT
2	DEC 21-22	ISSUED FOR APPROVAL
1	DEC 19-22	ISSUED FOR COORDINATION

D. B. GRAY ENGINEERING INC.
Stormwater Management - Grading & Drainage - Storm & Sanitary Sewers - Watermain
 700 Long Point Circle 613-425-8044
 Ottawa, Ontario d.gray@dbgrayengineering.com

Project
PROPOSED 6-STORY MIXED-USE BUILDING
2040 ARROWSMITH DRIVE
 OTTAWA, ONTARIO

Drawing Title
EXISTING CONDITIONS, REMOVALS & ABANDONMENT PLAN
 (SOUTH)

Engineer's Seal

 NOT VALID UNLESS SIGNED & DATED

Drawn	D.B.G.
H. Scale	1:150
V. Scale	
Date	NOV 29-22
Job No.	22062

Drawing No.
C-7
 of 18