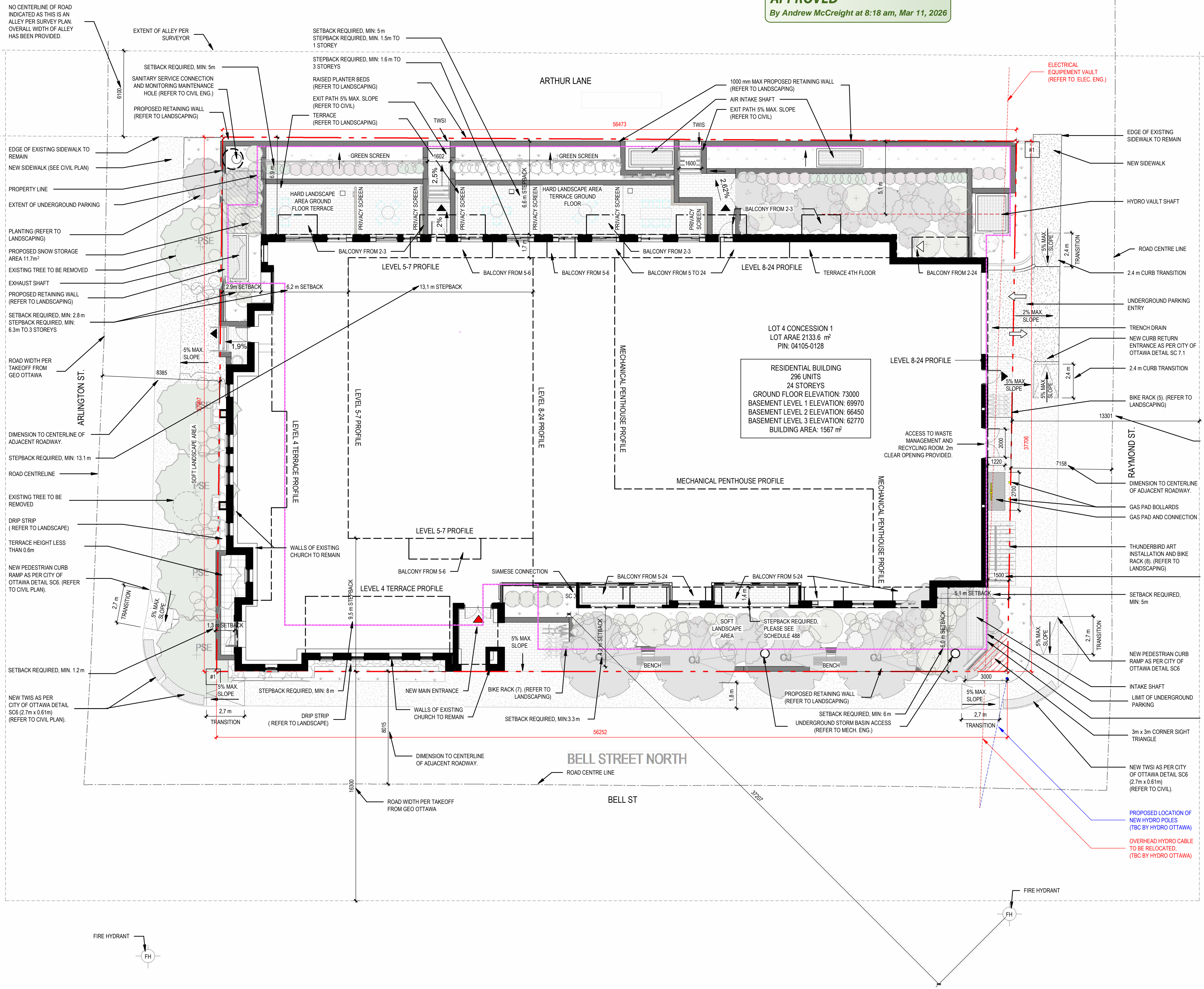
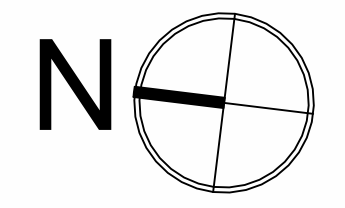


*Andrew McCreight*

**ANDREW MCCREIGHT**  
**MANAGER, DEVELOPMENT REVIEW CENTRAL**  
**PLANNING, DEVELOPMENT & BUILDING SERVICES**  
**DEVELOPMENT DEPARTMENT, CITY OF OTTAWA**

**APPROVED**  
 By Andrew McCreight at 8:18 am, Mar 11, 2026



**SITE ABBREVIATIONS**

AD	AREA DRAIN
CB	CATCH BASIN
D.C.	DEPRESSED CURVE
UP	UTILITY POLE
RM	REMOTE MONITOR
STM MH	STORMWATER MANHOLE
FDC	FIRE DEPARTMENT CONNECTION
SC	SIEMSE CONNECTION
GW	GUIDE WIRE
LS	LIGHT STANDARD (REFER TO ELEC. ENG.)
FH	FIRE HYDRANT
THIS	TACTILE WALKING INDICATOR STRIP
MUP	MULTI-USE PATHWAY

**SITE LEGEND**

	PRINCIPAL ENTRANCE
	ENTRANCE
	EXIT
	FIRE HYDRANT (FH)
	SIEMSE CONNECTION (FDC)
	STREET SIGNAGE
	PROPERTY LINE
	ROAD CENTRELINE
	BUILDING EDGE
	UNDERGROUND PARKING EXTEND
	VERTICAL BICYCLE PARKING 1500mm x 500mm
	BICYCLE PARKING AT GROUND LEVEL 1800mm x 600mm
	WALLS OF EXISTING CHURCH TO REMAIN
	TERRACE
	ROAD IN ASPHALT
	PEDESTRIAN PATH
	SIDEWALK
	BUILDING AREA
	SOFT LANDSCAPING (REFER TO LANDSCAPE)
	450mm DRIP STRIP (REFER TO LANDSCAPE)
	PAVERS (REFER TO LANDSCAPE)
	MECHANICAL EQUIPMENTS
	TRAFFIC DIRECTION
	PROPOSED SNOW STORAGE

**STREET SIGNS**

FOR ALL THE SIGNS FOLLOW THE SPECIFICATIONS OF THE CITY OF OTTAWA

#1	STOP SIGN
#2	FIRE ROUTE SIGN
#3	PRIORITY TO PEDESTRIAN SIGN
#4	LIMITED PARKING SIGNAGE
#5	ONE WAY SIGN
#6	YIELD SIGNAGE
#7	ACCESSIBILITY PARKING SIGN
#8	Ottawa Fire Services - UNDERGROUND PARKING STRUCTURE WITH GREEN 150Pa SIGNAGE

**GENERAL NOTES:**  
 REFER TO CIVIL AND LANDSCAPING FOR SITE COORDINATION.  
 REFER TO CIVIL FOR STREET CURB AND SURFACE SLOPE DETAILS.  
 PRECAST RETAINING WALL TO BE ENGINEERED AND SUPPLIED BY OTHERS.

	PROPOSED NEW HYDRO CABLE
	EXISTING OVERHEAD HYDRO CABLE

Property Area		2025-10-03	
Zoning	H		
Property Area	2133.6 sq. m	22,066 sq. ft	

PROJECT STATISTICS		BUILDING	
BUILDING HEIGHT (m)	74.4 m		
TOTAL GFA AND RESIDENTIAL USE	20951 m²		
LOT COVERAGE	1442 m²		

UNIT STATISTICS		GF	2nd	3rd	4th	5th-6th	7th	8th-24th	TOTAL
MULTIPLES		1	1	1	1	2	1	17	
STUDIO		4	2	2	5	6	4	0	20
1 Bedroom		5	8	7	8	6	5	4	43
1 Bedroom + Den		1	4	2	0	0	0	0	7
2 Bedroom		0	3	4	3	3	5	5	23
2 Bedroom + Den		0	0	0	0	0	0	0	0
3 Bedroom		0	0	0	0	0	0	0	0
3 Bedroom + Den		1	1	0	0	0	0	0	2
TOTAL		14	19	16	15	34	11	187	296

CAR PARKING		REQUIRED	PROVIDED
RESIDENT PARKING - 296 UNITS		0.20	67
VISITOR PARKING - 296 UNITS		0.04	11
TOTAL			88
OUTDOOR			0
Accessible parking		0.04	3/62

BICYCLE PARKING		REQUIRED	PROVIDED
APARTMENT BUILDING - 296 UNITS		1.00	296
			30+ 20 exterior spaces

ZONE R58(2)181-488-h		REQUIRED	PROVIDED
MINIMUM LOT AREA	61.7m		2133.6 m²
MINIMUM LOT WIDTH	22.50		33
MIN. FRONT YARD SETBACK - Arlington Ave	Existing building, 0m		Existing building, 0m
MIN. CORNER YARD SETBACK - Bell St	Existing building, 0m		Existing building, 0m
MINIMUM INTERIOR SIDE YARD SETBACK - Arthur Ln	5.7		5.7
MINIMUM REAR YARD SETBACK - Raymond St	0		1.5
MAXIMUM BUILDING HEIGHT	78m (per Schedule 488)		74.4 m
MINIMUM LANDSCAPE AREA	24%		24% (511.4m)
MINIMUM WIDTH OF DRIVE AISLE FOR PARKING LOT ACCESSORY TO A RESIDENTIAL USE (by law 2020-299)	0.0m		0.0m
MIN. WIDTH OF DRIVE AISLE FOR PARKING GARAGE	6.0m		6.0m

AMENITY AREA		REQUIRED	PROVIDED
ZONING BY-LAW SECTION 137			
MINIMUM FOR APARTMENT DWELLING - 5m²/UNIT	1776m²		2026m²
MINIMUM 50% COMMUNAL	888m²		958m²
AT LEAST ONE COMMUNAL AREA > 54 m²	54m²		78m²
RESIDENTIAL COMMUNAL AMENITY AREA			
INTERIOR COMMUNAL AMENITY (GF, 3RD, 4TH)			463m²
EXTERIOR COMMUNAL AMENITY (GF, 4TH, 7TH)			487m²
TOTAL COMMUNAL AMENITY AREA			950m²
RESIDENTIAL PRIVATE AMENITY AREA			
GROUND FLOOR - TERRACES			134m²
2ND FLOOR - BALCONIES / TERRACES			57m²
3RD FLOOR - BALCONIES			57m²
4TH FLOOR - TERRACES			108m²
5TH TO 6TH FLOOR - BALCONIES			122m²
7TH FLOOR - BALCONIES / TERRACES			37m²
8TH TO 24TH FLOOR - BALCONIES			612m²
TOTAL PRIVATE			1126m²
TOTAL	1776m²		2026m²

PROPERTY BOUNDARY AND TOPOGRAPHIC INFORMATION DERIVED FROM TOPOGRAPHIC PLAN OF SURVEY OF LOTS 14 & 15 AND PART OF LOTS 13 & 16 (SOUTH OF STONE BOUNDARY LOTS) EAST OF BELL STREET NORTH, REGISTERED PLAN 33, CITY OF OTTAWA, PREPARED BY STANTEC, DATED JUNE 16, 2022.

LEGAL DESCRIPTION: LTS 14 & 15, PL 33, (S OF STONE BOUNDARY) E BELL ST N; PT LTS 13 & 16, PL 33, (S OF STONE BOUNDARY) E BELL ST N; AS IN CR31653, CR101496, CR472519 & CR513256; OTTAWA/NEPEAN



**SITE PLAN**  
 1:150

**NOTES GÉNÉRALES - General Notes**

- Ces documents d'architecture sont la propriété exclusive de NEUF architect(e)s et ne peuvent être utilisés, reproduits ou copiés sans autorisation écrite préalable. / These architectural documents are the exclusive property of NEUF architect(e)s and cannot be used, copied or reproduced without written pre-authorization.
- Les dimensions apparaissant sur ces documents doivent être vérifiées par l'entrepreneur avant le début des travaux. / All dimensions which appear on the documents must be verified by the contractor before to start the work.
- Validez avant l'architecte de toute dimension exacte et/ou divergences entre ces documents et ceux des autres professionnels. / The architect must be notified of all errors, omissions and discrepancies between these documents and those of the others professionals.
- Les dimensions sur ces documents doivent être lues et non mesurées. / The dimensions on these documents must be read and not measured.

**PLANNER**  
**FOITEN Planning and Urban design**  
 316, Cooper Street, Ottawa, ON K2P 2H7  
 T 613 733 5709 www.foiten.com

**LANDSCAPE ARCHITECT**  
**SPRUCE LAB**  
 500 Bayview Ave. Suite 300 Toronto, ON M2W 3G8  
 www.sprucelab.ca

**MECHANICAL/ELECTRICAL**  
**Smith + Andersen**  
 600 Carling Avenue, Suite 530 Ottawa, ON K1Z 1G3  
 T 613 230-1186 www.smithandandersen.com

**CIVIL**  
**CIMA+**  
 600-1400 Stee Towers Place Ottawa, ON K1J 8B8  
 T 613 580-3442 www.cima.ca

**GEOTECHNICAL**  
**PATERSON GROUP**  
 5 King's Drive, Ottawa, ON K1N 7T1  
 T 613 226 7381 www.paterosngroup.ca

**STRUCTURAL**  
**D+M Structural Engineers**  
 333 Preston Street, Suite 110 Ottawa, ON K1S 9M4  
 T 613 651-9490 www.d-m-structural.ca

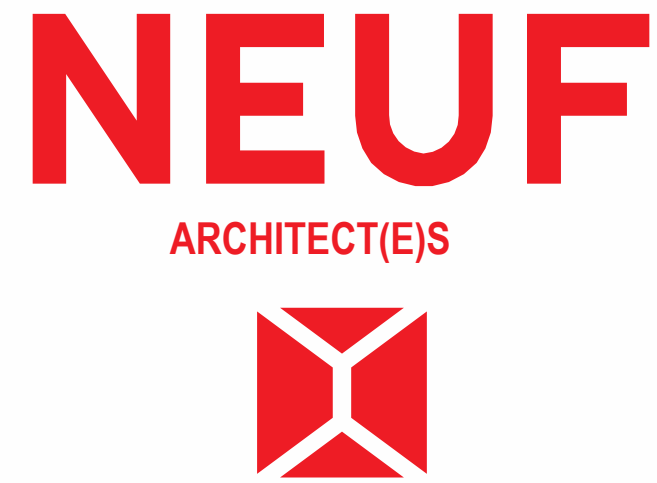
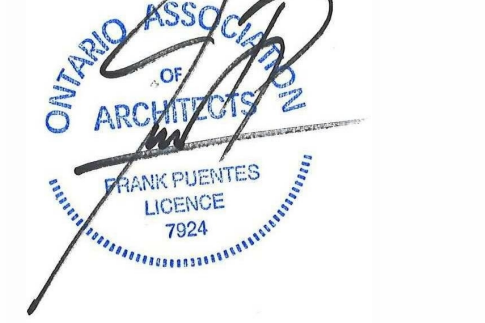
**ENVIRONMENTAL**  
**Pinchin Ltd.**  
 1 Hines Road, Suite 200 Kanata, ON K2K 3C7  
 T 855 746-2446 www.pinchin.com

**HERITAGE**  
**Bray Heritage**  
 637 Princess Street, Suite 400 Kingston, ON K7L 1G8  
 T 613 542-3393 www.brayheritage.com

**GENERAL CONTRACTOR**  
**Doran Contractors Ltd.**  
 3197 Hurdell Dr Ottawa, ON K1T 1W5  
 T 613 526-2400 www.doran.ca

**ENERGY MODELING**  
**EQ Building Performance Inc**  
 20 Floral Parkway Concord, ON L4K 4R1  
 T 416 645-1186 www.eqbuilding.com

**ARCHITECT**  
**NEUF architect(e)s**  
 630, Loui, Front L'Esplanade 0 32nd floor, Montreal QC H3B 1S8  
 T 514 344-3393 www.neuf.ca



CLIENT Client

150 Elgin St, Suite 1000 Ottawa, ON K2P 1L4  
 613-633-6033 www.neufarchitects.com

**384 ARLINGTON AVENUE, RESIDENTIAL.**  
 OUVREUR Project

NO	REVISION	DATE (aa-mm-jj)
A	SPA SUBMISSION	2024-06-07
B	30% COORDINATION	2024 06 14
C	SPA FORMAL SUBMISSION	2024 10 04
D	FOR TENDER 1	2024 10 30
E	FOR INTERNAL REVIEW 3	2024 11 26
F	SPA FORMAL SUBMISSION - REV. 1	2024 12 04
1	FOR FOUNDATION PERMIT	2024 12 23
2	FOR INTERNAL REVIEW 4	2025 08 08
3	SPA FORMAL SUBMISSION - REV. 2	2025 10 03

DESIGNÉ PAR Drawn by R.R. VÉRIFIÉ PAR Checked by F.P.  
 DATE (aa mm jj) 2024-06-07 ÉCHELLE Scale As  
 TITRE DU DESSIN Drawing Title indicated

**SITE PLAN**  
 REVISION Revision NO. DESSIN Drawing Number  
**3** **A101**