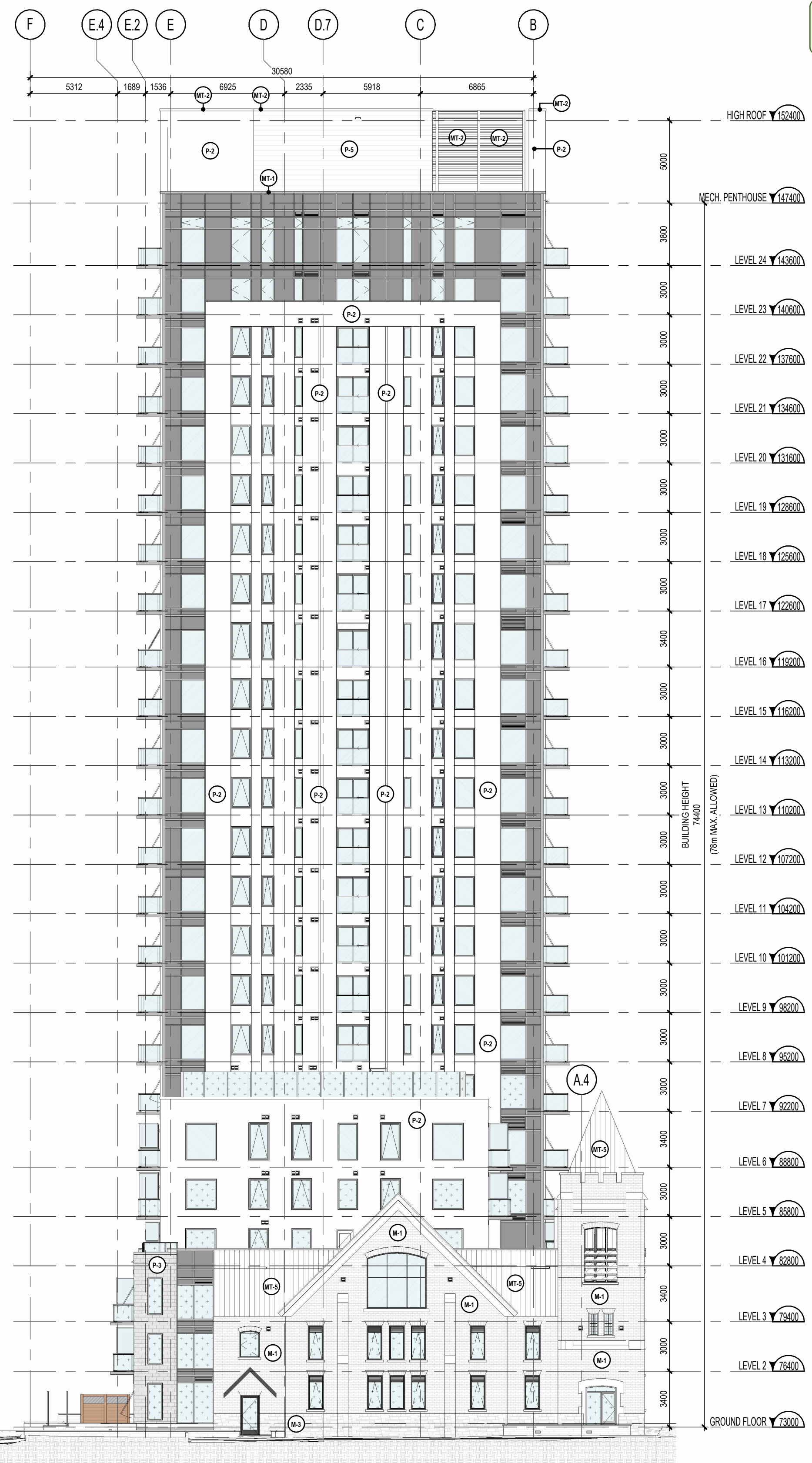


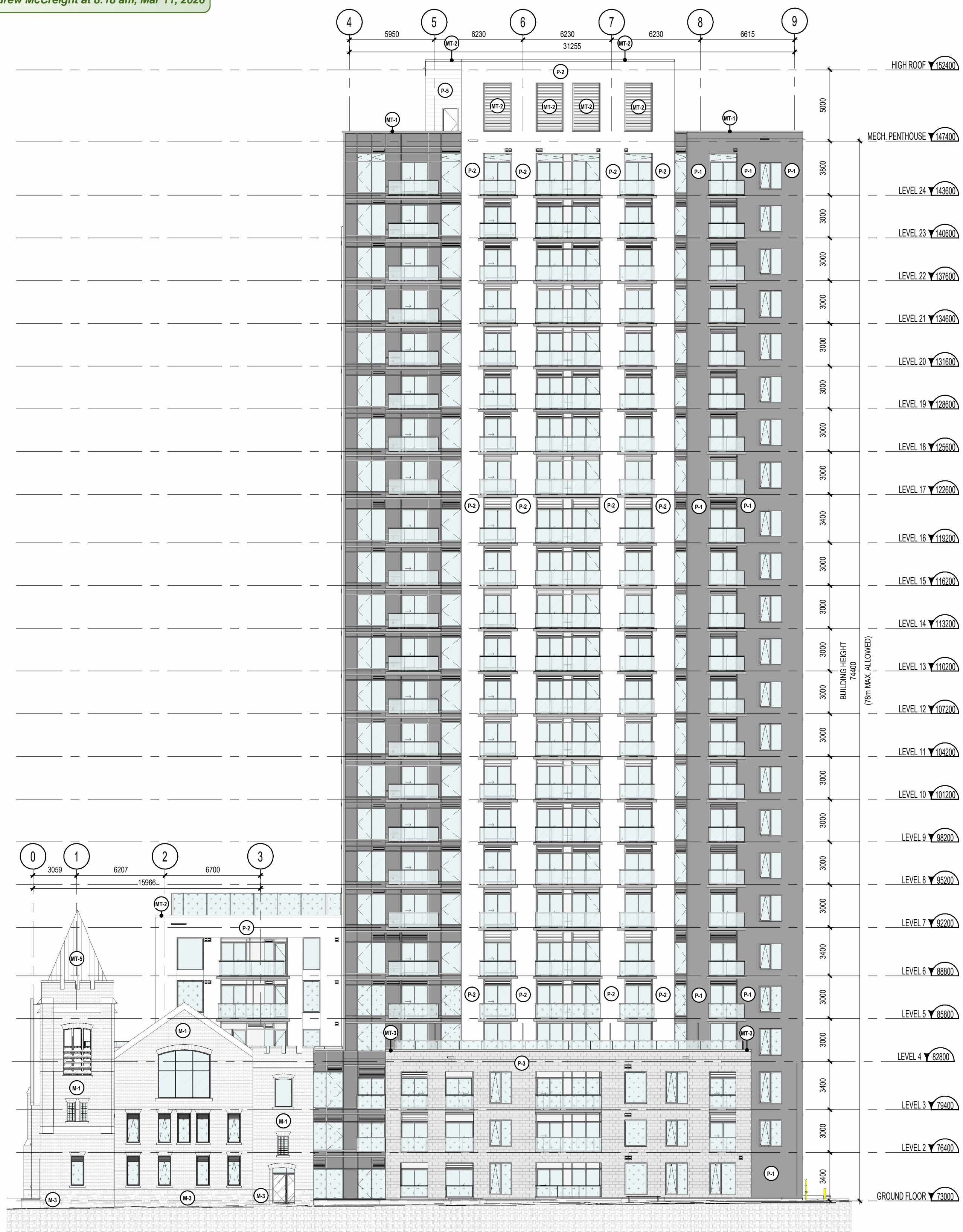
Andrew McCreight

ANDREW MCCREIGHT
MANAGER, DEVELOPMENT REVIEW CENTRAL
PLANNING, DEVELOPMENT & BUILDING SERVICES
DEVELOPMENT DEPARTMENT, CITY OF OTTAWA

APPROVED
 By Andrew McCreight at 8:18 am, Mar 11, 2025



ELEVATION - NORTH (ARLINGTON.AV.) 2
 1:200 A401



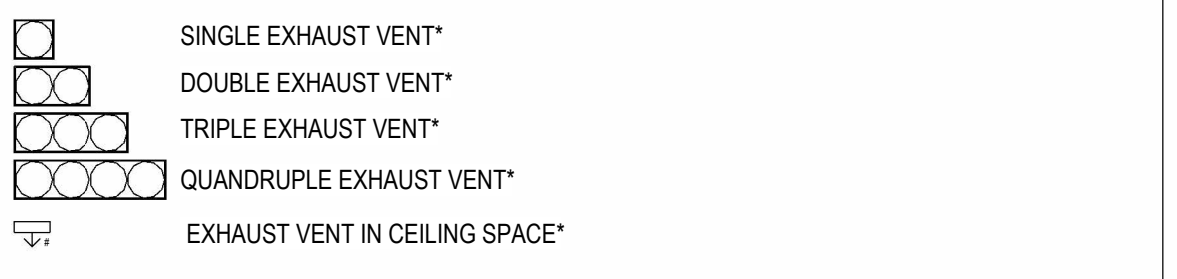
ELEVATION - WEST (BELL ST) 1
 1:200 A401

EXTERIOR FINISH LEGEND

- CONCRETE**
- C-1** EXPOSED CONCRETE (COLUMNS TO BE SEALED WITH A CLEAR SEALER - SEE SPECIFICATIONS)
 - C-2** PARGING
- MASONRY**
- M-1** MASONRY VENEER - TYPE 1 (BRICK - EXISTING CHURCH)
 - M-2** MASONRY VENEER - TYPE 2 (BRICK - NEW EXTERIOR GRADE - TBD)
 - M-3** MASONRY VENEER - TYPE 3 (STONE - EXISTING CHURCH)
 - M-4** MASONRY VENEER - TYPE 4 (STONE - NEW EXTERIOR GRADE - COLOUR TO MATCH MT-4 - TBD)
- PRECAST CONCRETE PANELS**
- P-1** PRECAST CONCRETE PANEL - TYPE 1 (DARK GREY - TBD)
 - P-2** PRECAST CONCRETE PANEL - TYPE 2 (WHITE - TBD)
 - P-3** PRECAST CONCRETE PANEL - TYPE 3 (GREY - STAMPED BRICK FINISH - TBD)
 - P-4** PRECAST CONCRETE PANEL - TYPE 4 (WHITE - STAMPED BRICK FINISH - TBD)
 - P-5** PRECAST CONCRETE PANEL - TYPE 5 (WHITE - HORIZONTAL GROOVE FINISH - TBD)
- PREFINISHED METAL OR ALUMINIUM**
- MT-1** PREFINISHED METAL (VICWEST WEATHER XL - DARK GREY, COLOUR TO MATCH P-1 - TBD)
 - MT-2** PREFINISHED METAL (VICWEST WEATHER XL - WHITE, COLOUR TO MATCH P-2 - TBD)
 - MT-3** PREFINISHED METAL (VICWEST WEATHER XL - GREY, COLOUR TO MATCH P-3 - TBD)
 - MT-4** ALUMINIUM CLEAR ANODIZED FINISH
 - MT-5** STAINLESS STEEL (CHURCH ROOF - TBD)
- PERFORATED METAL PANEL**
- PM-1** PERFORATED METAL PANEL (COLOUR TO MATCH P-1, REFER TO DETAIL X/AXXX FOR PATTERN)
 - PM-2** PERFORATED METAL PANEL (COLOUR TO MATCH P-2, REFER TO DETAIL X/AXXX FOR PATTERN)
 - PM-3** PERFORATED METAL PANEL (COLOUR TO MATCH P-3, REFER TO DETAIL X/AXXX FOR PATTERN)
- GLASS** (REFER TO WINDOW SCHEDULES FOR GLASS MATERIALS FINISHES)
- G-1** GLASS TYPE 1 (CLEAR, SEE SPECIFICATIONS)
 - G-2** GLASS TYPE 2 (SPANDREL - GREY FRIT TBD, SEE SPECIFICATIONS)
 - G-3** GLASS TYPE 3 (SPANDREL - WHITE FRIT TBD, SEE SPECIFICATIONS)
 - G-4** GLASS TYPE 4 (PINHEAD TEXTURED PRIVACY GLASS, SEE SPECIFICATIONS)
 - G-5** GLASS TYPE 5 (BIRD SAFE GLASS, SEE SPECIFICATIONS)

ABBREVIATIONS/ SYMBOL LEGEND

- C.J.: CONTROL JOINT (SEALANT COLOUR TO MATCH ADJACENT VENEER)
- L.L.: PRIMED AND PAINTED LOOSE LINTEL (COLOUR TO MATCH ADJACENT VENEER)
- S.A.: PRIMED AND PAINTED SHELF ANGLE (COLOUR TO MATCH ADJACENT VENEER)
- S.S.A.: PRIMED AND PAINTED SUSPENDED SHELF ANGLE (COLOUR TO MATCH ADJACENT VENEER)
- S.S.: SUPPORT STRUCTURE (OPENINGS OVER 3000mm), STRUCTURAL STEEL HSS AND SHELF ANGLE ABOVE WINDOW (SEE STRUCTURAL ENGINEER FOR STRUCTURE TYPE, SIZE, SPACING, DIMENSIONS, LOCATIONS, ANCHORAGE, ETC.)
- I.S.A.: INVERTED SHELF ANGLE
- G.G.: GUARDRAIL STRUCTURAL SUPPORT ANGLE
- SP.A.: ALUMINIUM SPANDREL C/W INSULATED BACK PAIN
- S.C.: SCUPPER



* # INDICATED NUMBER OF VENTS
 * ALL EXHAUST VENT LOCATION TO BE VERIFIED AND COORDINATED WITH MECHANICAL ENGINEER

NOTES

- 1 - REFER TO PAGES Axx FOR BRICK AND STONE COURSING DETAILS. FOR OTHER MASONRY SIZES AND TYPES, COURSING MUST BE ADAPTED TO THE STONE COURSING AND ROUGH SHAPES AS INDICATED ON THE DRAWINGS.
- 2 - ALL ALUMINIUM DOORS AND WINDOWS TO HAVE A MT-4 FINISH, UNLESS NOTED OTHERWISE.
- 3 - REFER TO WINDOW SCHEDULES FOR GLASS MATERIAL FINISHES.
- 4 - ALL EXTERIOR ALUMINIUM GUARDRAIL AND PRIVACY SCREEN SYSTEMS TO HAVE A MT-4 FINISH, UNLESS NOTED OTHERWISE. ALL GUARDRAIL GLASS TO BE G-1 TYPE. ALL PRIVACY SCREENS TO HAVE G-4 TYPE.
- 5 - ALL WALL GRILLE COLOURS TO MATCH ADJACENT WALL FINISH. SEND COLOUR SAMPLE TO ARCHITECT FOR APPROVAL.
- 6 - IF EXTERIOR FINISH IS NOT TAGGED OR IS NOT CLEAR, CONFIRM WITH ARCHITECT.
- 7 - EXTERIOR WALL COMPONENTS ON THE NORTH AND EAST FACADES WILL REQUIRE A MINIMUM STC OF 45, WHICH WILL BE ACHIEVED WITH BRICK CLADDING OR AN ACOUSTICAL EQUIVALENT ACCORDING TO NRC TEST DATA.

NOTES GÉNÉRALES - General Notes

1. Ces documents d'architecture sont la propriété exclusive de NEUF architect(e)s et ne peuvent être utilisés, reproduits ou copiés sans autorisation écrite préalable. / These architectural documents are the exclusive property of NEUF architect(e)s and cannot be used, copied or reproduced without written pre-authorization.
2. Les dimensions apparaissant sur ces documents doivent être vérifiées par l'entrepreneur avant le début des travaux. / All dimensions which appear on the documents must be verified by the contractor before to start the work.
3. Veuillez aviser l'architecte de toute dimension erronée ou d'incohérence entre ces documents et ceux des autres professionnels. / The architect must be notified of all errors, omissions and discrepancies between these documents and those of the others professionals.
4. Les dimensions sur ces documents doivent être lues et non mesurées. / The dimensions on these documents must be read and not measured.

PLANNER
FOENN Planning and Urban design
 306, Copper Street, Ottawa, ON K2P 2H7
 T 613 733 5709 www.foenn.com

LANDSCAPE ARCHITECT
SPRUCE LAB
 500 Bayview Ave, Suite 300 Toronto, ON M4W 3K8
 www.sprucelab.ca

MECHANICAL / ELECTRICAL
Smith + Andersen
 600 Carling Avenue, Suite 530 Ottawa, ON K1Z 1G3
 T 613-233-1186 www.smithandandersen.com

CIVIL
CIMA+
 600-1400 Stee Towers Place Ottawa, ON K1J 9B8
 T 613-580-5442 www.cima.ca

GEOTECHNICAL
PATERSON GROUP
 15 King Drive Ottawa, ON K2E 7T1
 T 613-226-7381 www.paterisongroup.ca

STRUCTURAL
D+M Structural Engineers
 333 Preston Street, Suite 110 Ottawa, ON K1S 9M4
 T 613-651-9490 www.d-m-structural.ca

ENVIRONMENTAL
Pinchin Ltd.
 1 Hines Road, Suite 200 Kanata, ON K2K 3C7
 T 855-746-2446 www.pinchin.com

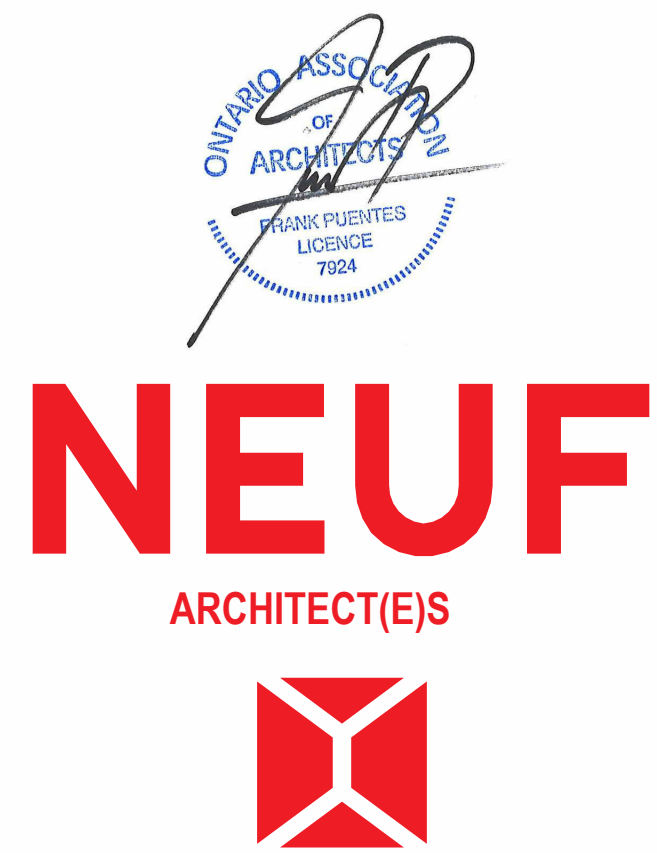
HERITAGE
Bray Heritage
 637 Princess Street, Suite 400 Kingston, ON K7L 1G8
 T 613-542-3303 www.brayheritage.com

GENERAL CONTRACTOR
Doran Contractors Ltd.
 3197 Allison Rd O Ottawa, ON K1V 1W9
 T 613-526-2400 www.doran.ca

ENERGY MODELING
EQ Building Performance Inc
 20 Floral Parkway Concord, ON L4K 4R1
 T 416-645-1186 www.eqbuilding.com

ARCHITECT
NEUF architect(e)s
 630, Loui, René-Lévesque O 32^e floor, Montréal QC H3B 1S8
 T 514 851 1117 www.neuf.ca

SCAM / 3e88



windmill

150 Egl. St. Suite 1000 Ottawa, ON K2P 1L4
 613-653-8600 windmilldevelopments.com

OUVRAGE: Project

384 ARLINGTON AVENUE, RESIDENTIAL.

EMPLACEMENT Location NO. PROJECT No.
 OTTAWA, ON 12805

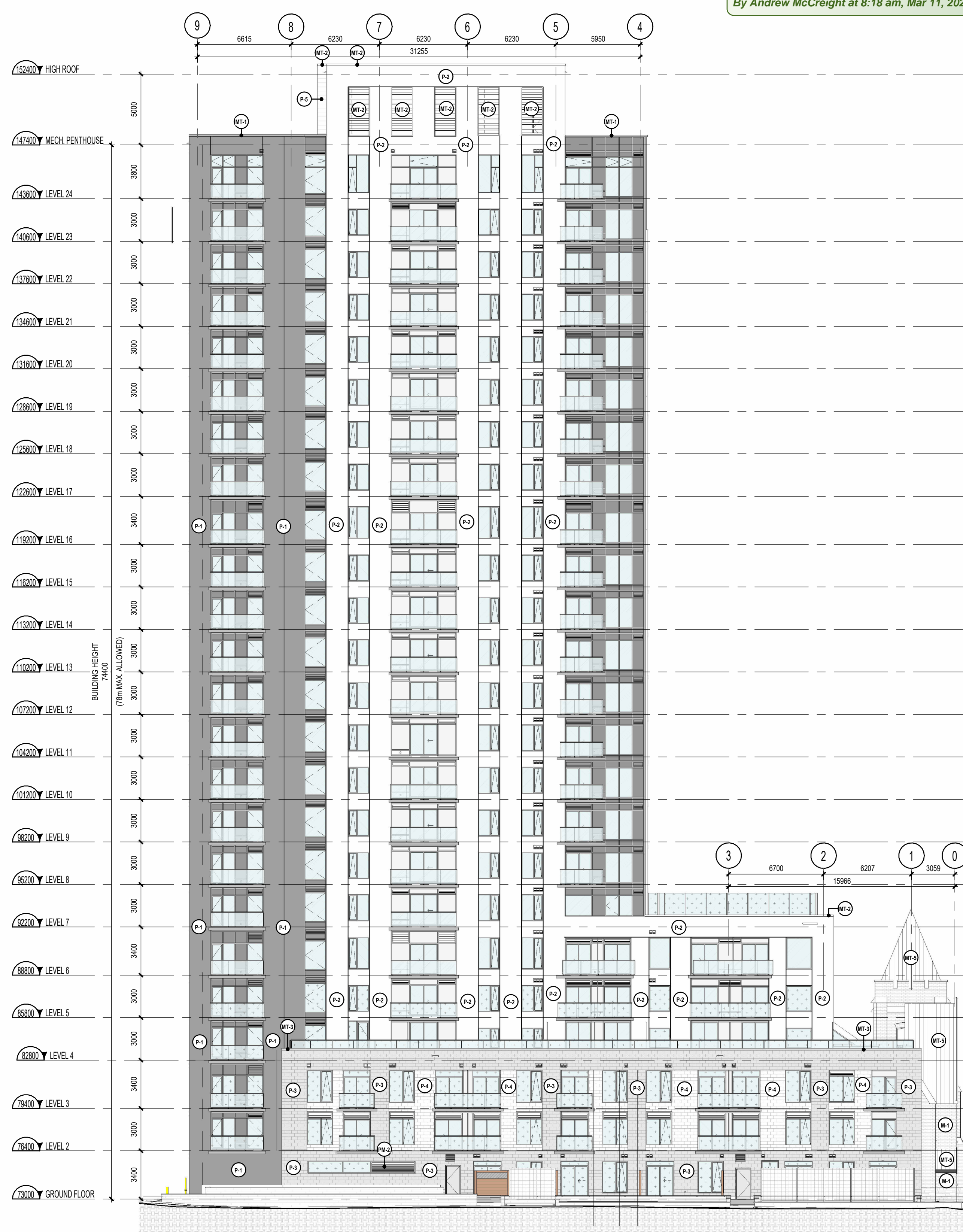
NO	REVISION	DATE (aa-mm-ii)
A	SPA SUBMISSION	2024-06-07
B	30% COORDINATION	2024 06 14
C	SPA FORMAL SUBMISSION	2024 10 04
D	FOR TENDER 1	2024 10 30
E	FOR COORDINATION	2024 11 08
F	FOR INTERNAL REVIEW 3	2024 11 26
G	SPA FORMAL SUBMISSION - REV. 1	2024 12 04
1	FOR FOUNDATION PERMIT	2024 12 23
2	FOR FOUNDATION PERMIT - R1	2025 06 26
3	FOR INTERNAL REVIEW 4	2025 08 08
4	SPA FORMAL SUBMISSION - REV. 2	2025 10 03
5	80 % COORDINATION	2025 10 24
6	90 % COORDINATION	2025 12 19
7	SPA FORMAL SUBMISSION - REV. 3	2026 01 13

DESIGNÉ PAR Drawn by T.T. VÉRIFIÉ PAR Checked by R.R./F.P.
 DATE (aa mm ii) 2024-06-07 ÉCHELLE Scale 1:200
 TITRE DU DESSIN Drawing Title

ELEVATIONS - NORTH & WEST



ELEVATION - SOUTH (RAYMOND ST.) 2
1:200



ELEVATION - EAST (ARTHUR LANE) 1
1:200

Andrew McCreight
ANDREW MCCREIGHT
 MANAGER, DEVELOPMENT REVIEW CENTRAL
 PLANNING, DEVELOPMENT & BUILDING SERVICES
 DEVELOPMENT DEPARTMENT, CITY OF OTTAWA

APPROVED
 By Andrew McCreight at 8:18 am, Mar 11, 2025

EXTERIOR FINISH LEGEND

CONCRETE

- C-1** EXPOSED CONCRETE (COLUMNS TO BE SEALED WITH A CLEAR SEALER - SEE SPECIFICATIONS)
- C-2** PARGING

MASONRY

- M-1** MASONRY VENEER - TYPE 1 (BRICK - EXISTING CHURCH)
- M-2** MASONRY VENEER - TYPE 2 (BRICK - NEW EXTERIOR GRADE - TBD)
- M-3** MASONRY VENEER - TYPE 3 (STONE - EXISTING CHURCH)
- M-4** MASONRY VENEER - TYPE 4 (STONE - NEW EXTERIOR GRADE - COLOUR TO MATCH MT-4 - TBD)

PRECAST CONCRETE PANELS

- P-1** PRECAST CONCRETE PANEL - TYPE 1 (DARK GREY - TBD)
- P-2** PRECAST CONCRETE PANEL - TYPE 2 (WHITE - TBD)
- P-3** PRECAST CONCRETE PANEL - TYPE 3 (GREY - STAMPED BRICK FINISH - TBD)
- P-4** PRECAST CONCRETE PANEL - TYPE 4 (WHITE - STAMPED BRICK FINISH - TBD)
- P-5** PRECAST CONCRETE PANEL - TYPE 5 (WHITE - HORIZONTAL GROOVE FINISH - TBD)

PREFINISHED METAL OR ALUMINIUM

- MT-1** PREFINISHED METAL (VICWEST WEATHER XL - DARK GREY, COLOUR TO MATCH P-1 - TBD)
- MT-2** PREFINISHED METAL (VICWEST WEATHER XL - WHITE, COLOUR TO MATCH P-2 - TBD)
- MT-3** PREFINISHED METAL (VICWEST WEATHER XL - GREY, COLOUR TO MATCH P-3 - TBD)
- MT-4** ALUMINIUM CLEAR ANODIZED FINISH
- MT-5** STAINLESS STEEL (CHURCH ROOF - TBD)

PERFORATED METAL PANEL

- PM-1** PERFORATED METAL PANEL (COLOUR TO MATCH P-1, REFER TO DETAIL X/AXXX FOR PATTERN)
- PM-2** PERFORATED METAL PANEL (COLOUR TO MATCH P-2, REFER TO DETAIL X/AXXX FOR PATTERN)
- PM-3** PERFORATED METAL PANEL (COLOUR TO MATCH P-3, REFER TO DETAIL X/AXXX FOR PATTERN)

GLASS (REFER TO WINDOW SCHEDULES FOR GLASS MATERIALS FINISHES)

- G-1** GLASS TYPE 1 (CLEAR, SEE SPECIFICATIONS)
- G-2** GLASS TYPE 2 (SPANDREL - GREY FRIT TBD, SEE SPECIFICATIONS)
- G-3** GLASS TYPE 3 (SPANDREL - WHITE FRIT TBD, SEE SPECIFICATIONS)
- G-4** GLASS TYPE 4 (PINHEAD TEXTURED PRIVACY GLASS, SEE SPECIFICATIONS)
- G-5** GLASS TYPE 5 (BIRD SAFE GLASS, SEE SPECIFICATIONS)

ABBREVIATIONS/ SYMBOL LEGEND

- C.J.: CONTROL JOINT (SEALANT COLOUR TO MATCH ADJACENT VENEER)
- L.L.: PRIMED AND PAINTED LOOSE LINTEL (COLOUR TO MATCH ADJACENT VENEER)
- S.A.: PRIMED AND PAINTED SHELF ANGLE (COLOUR TO MATCH ADJACENT VENEER)
- S.S.A.: PRIMED AND PAINTED SUSPENDED SHELF ANGLE (COLOUR TO MATCH ADJACENT VENEER)
- S.S.: SUPPORT STRUCTURE (OPENINGS OVER 3000mm), STRUCTURAL STEEL HSS AND SHELF ANGLE ABOVE WINDOW (SEE STRUCTURAL ENGINEER FOR STRUCTURE TYPE, SIZE, SPACING, DIMENSIONS, LOCATIONS, ANCHORAGE, ETC.)
- I.S.A.: INVERTED SHELF ANGLE
- G.G.: GUARDRAIL STRUCTURAL SUPPORT ANGLE
- SP.A.: ALUMINIUM SPANDREL C/W INSULATED BACK PAIN
- S.C.: SCUPPER

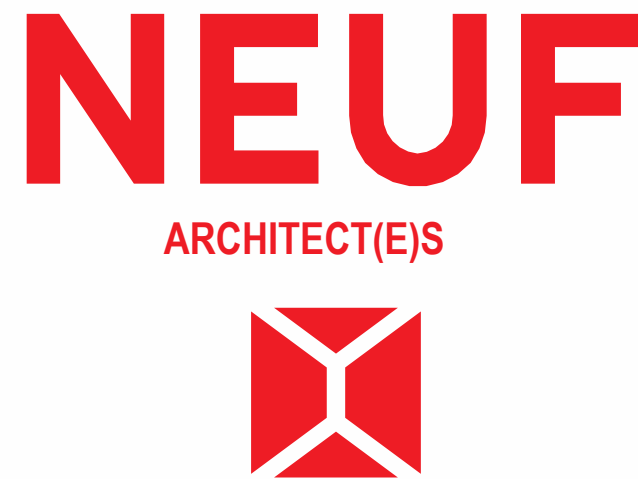
- ☐ SINGLE EXHAUST VENT*
- ☐☐ DOUBLE EXHAUST VENT*
- ☐☐☐ TRIPLE EXHAUST VENT*
- ☐☐☐☐ QUADRUPLE EXHAUST VENT*
- ☐☐☐☐ EXHAUST VENT IN CEILING SPACE*

* # INDICATED NUMBER OF VENTS
 * ALL EXHAUST VENT LOCATION TO BE VERIFIED AND COORDINATED WITH MECHANICAL ENGINEER

NOTES

- 1 - REFER TO PAGES Axx FOR BRICK AND STONE COURSING DETAILS. FOR OTHER MASONRY SIZES AND TYPES, COURSING MUST BE ADAPTED TO THE STONE COURSING AND ROUGH OPENINGS AS INDICATED ON THE DRAWINGS.
- 2 - ALL ALUMINIUM DOORS AND WINDOWS TO HAVE A MT-4 FINISH, UNLESS NOTED OTHERWISE.
- 3 - REFER TO WINDOW SCHEDULES FOR GLASS MATERIAL FINISHES.
- 4 - ALL EXTERIOR ALUMINIUM GUARDRAIL AND PRIVACY SCREEN SYSTEMS TO HAVE A MT-4 FINISH, UNLESS NOTED OTHERWISE. ALL GUARDRAIL GLASS TO BE G-1 TYPE. ALL PRIVACY SCREENS TO HAVE G-4 TYPE.
- 5 - ALL WALL GRILLE COLOURS TO MATCH ADJACENT WALL FINISH. SEND COLOUR SAMPLE TO ARCHITECT FOR APPROVAL.
- 6 - IF EXTERIOR FINISH IS NOT TAGGED OR IS NOT CLEAR, CONFIRM WITH ARCHITECT.
- 7 - EXTERIOR WALL COMPONENTS ON THE NORTH AND EAST FACADES WILL REQUIRE A MINIMUM STC OF 45, WHICH WILL BE ACHIEVED WITH BRICK CLADDING OR AN ACOUSTICAL EQUIVALENT ACCORDING TO NRC TEST DATA.

- NOTES GÉNÉRALES - General Notes**
1. Ces documents d'architecture sont la propriété exclusive de NEUF architect(e)s et ne peuvent être utilisés, reproduits ou copiés sans autorisation écrite préalable. / These architectural documents are the exclusive property of NEUF architect(e)s and cannot be used, copied or reproduced without written pre-authorization.
 2. Les dimensions apparaissant aux documents doivent être vérifiées par l'entrepreneur avant le début des travaux. / All dimensions which appear on the documents must be verified by the contractor before to start the work.
 3. Veuillez aviser l'architecte de toute dimension erronée ou divergences entre ces documents et ceux des autres professionnels. / The architect must be notified of all errors, omissions and discrepancies between these documents and those of the others professionals.
 4. Les dimensions sur ces documents doivent être lues et non mesurées. / The dimensions on these documents must be read and not measured.
- PLANNER**
FOENN Planning and Urban design
 396, Copper Street, Ottawa, ON K2P 2H7
 T 613 730 5709 www.foenn.com
- LANDSCAPE ARCHITECT**
SPRUCE LAB
 500 Bayview Ave. Suite 300 Toronto, ON M4W 3G8
 www.sprucelab.ca
- MECHANICAL / ELECTRICAL**
Smith + Andersen
 600 Carling Avenue, Suite 530 Ottawa, ON K1Z 1G3
 T 613 230-1186 www.smithandandersen.com
- CIVIL**
CIMA+
 600-1400 Shear Towers Place Ottawa, ON K1J 9B8
 T 613 580-2442 www.cima.ca
- GEOTECHNICAL**
PATERSON GROUP
 15 King Drive Ottawa, ON K2E 1T1
 T 613 226 7381 www.paterisongroup.ca
- STRUCTURAL**
D+M Structural Engineers
 333 Preston Street, Suite 110 Ottawa, ON K1S 9M4
 T 613 651-9490 www.d-m-structural.ca
- ENVIRONMENTAL**
Pinchin Ltd.
 1 Hines Road, Suite 200 Kanata, ON K2K 3C7
 T 855 746-2446 www.pinchin.com
- HERITAGE**
Bray Heritage
 637 Princess Street, Suite 400 Kingston, ON K7L 1G8
 T 613 542-3303 www.brayheritage.com
- GENERAL CONTRACTOR**
Doran Contractors Ltd.
 3197 Allison Rd #2 Ottawa, ON K1V 1W5
 T 613 526-2400 www.doran.ca
- ENERGY MODELING**
EQ Building Performance Inc
 20 Floral Parkway Concord, ON L4K 4R1
 T 416 645-1186 www.eqbuilding.com
- ARCHITECT**
NEUF architect(e)s
 630, Loui, Front Levesque 0 32^e floor, Montreal QC H3B 1S8
 T 514 861 1117 www.neuf.ca
- SCAM / 388**



windmill

150 Elgin St. Suite 1000 Ottawa, ON K2P 1L4
 613-652-0600 windmilldevelopments.com

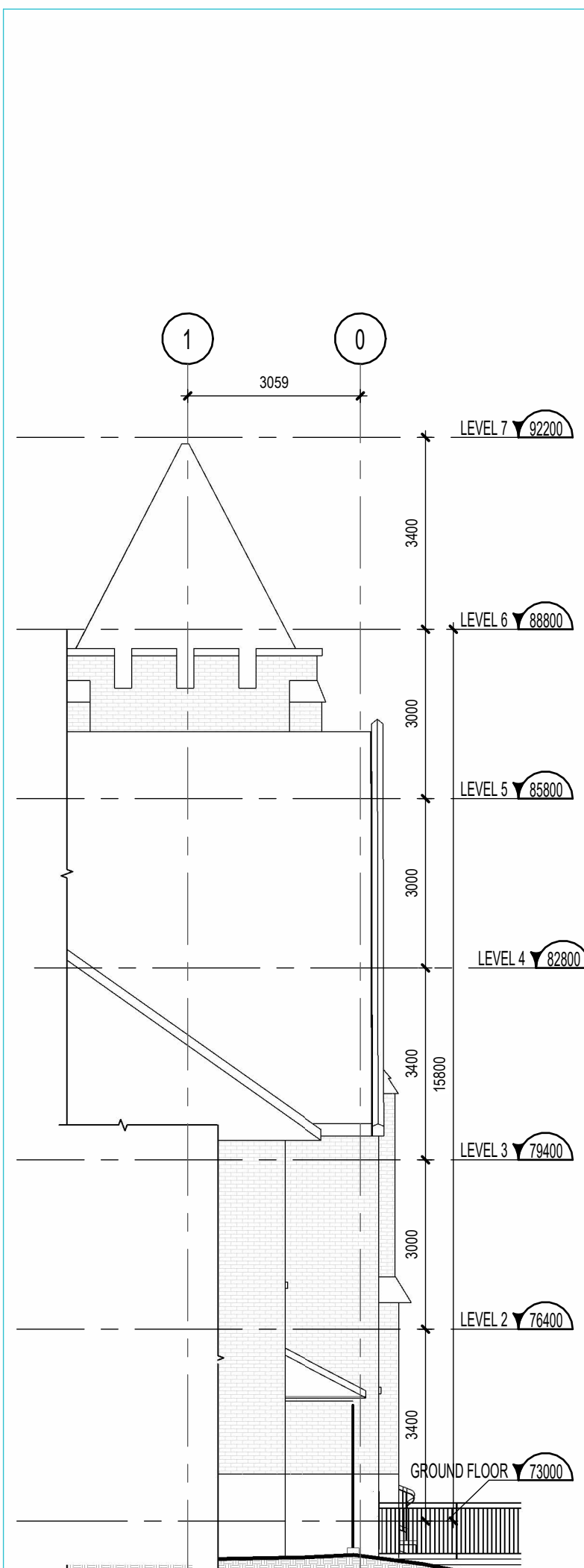
384 ARLINGTON AVENUE. RESIDENTIAL.

OTTAWA, ON 12805

NO	REVISION	DATE (aa-mm-ii)
A	SPA SUBMISSION	2024-06-07
B	30% COORDINATION	2024 06 14
C	SPA FORMAL SUBMISSION	2024 06 14
D	FOR TENDER 1	2024 10 30
E	FOR COORDINATION	2024 11 08
F	FOR INTERNAL REVIEW 3	2024 11 26
G	SPA FORMAL SUBMISSION - REV. 1	2024 12 04
1	FOR FOUNDATION PERMIT	2024 12 23
2	FOR FOUNDATION PERMIT - R1	2025 06 20
3	FOR INTERNAL REVIEW 4	2025 08 08
4	SPA FORMAL SUBMISSION - REV. 2	2025 10 03
5	80 % COORDINATION	2025 10 24
6	90 % COORDINATION	2025 12 19
7	SPA FORMAL SUBMISSION - REV. 3	2026 01 13

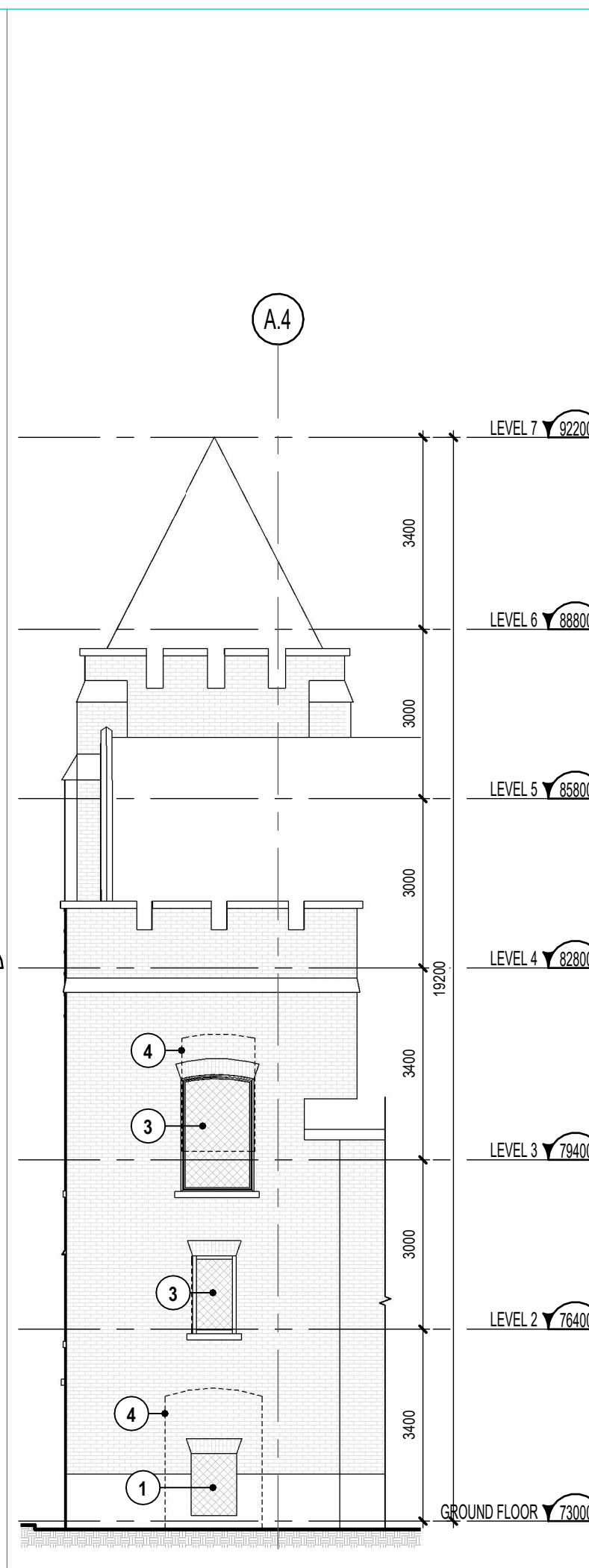
DESIGNÉ PAR Drawn by T.T. VERIFIÉ PAR Checked by R.R.F.P.
 DATE (aa mm ii) 2024-06-07 ÉCHELLE Scale 1:200
 TITRE DU DESSIN Drawing Title

ELEVATIONS - SOUTH & EAST



EXISTING EAST ELEVATION (ARTHUR LANE)

1:100 A405



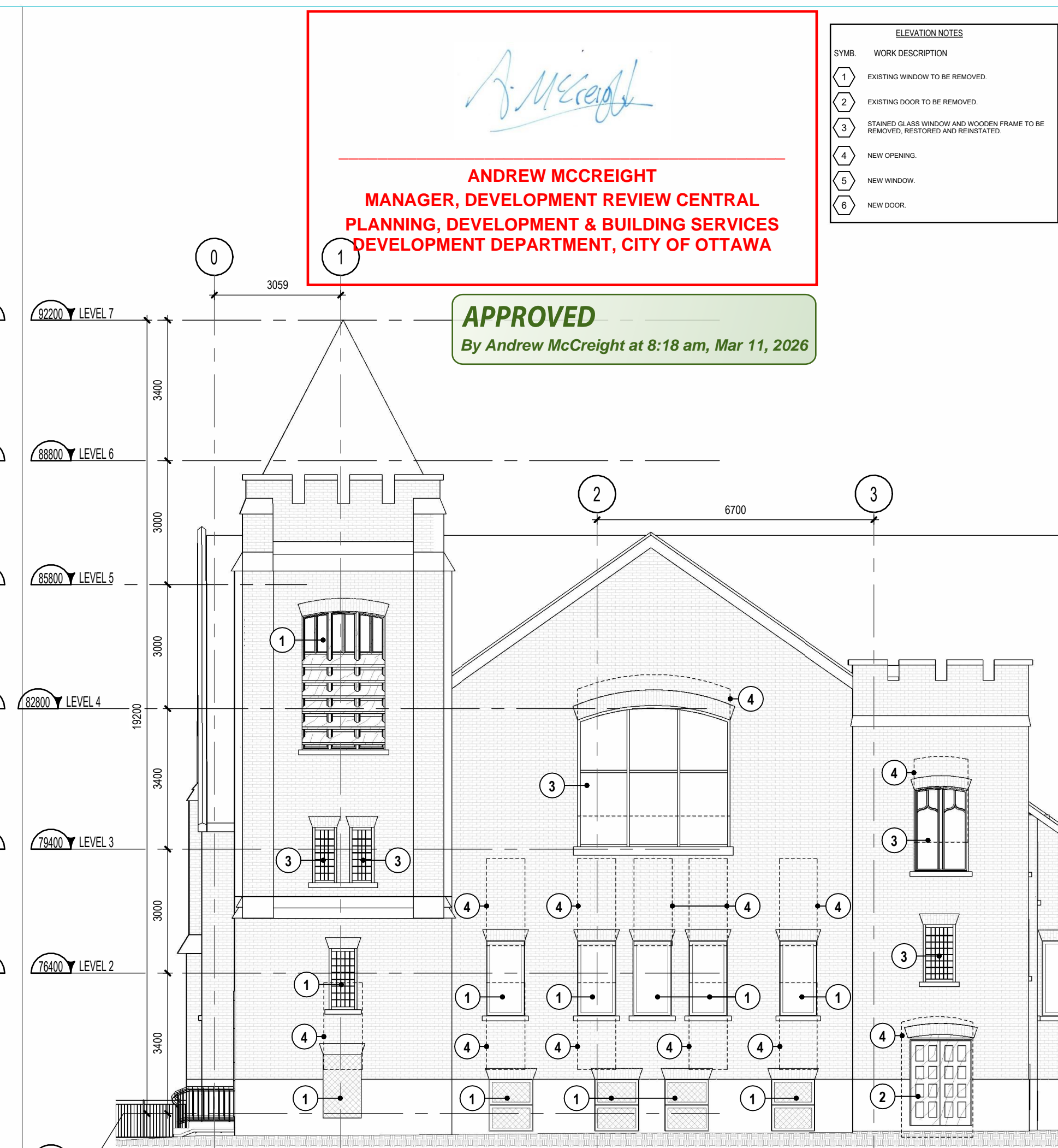
EXISTING SOUTH ELEVATION (RAYMOND ST.)

1:100 A405



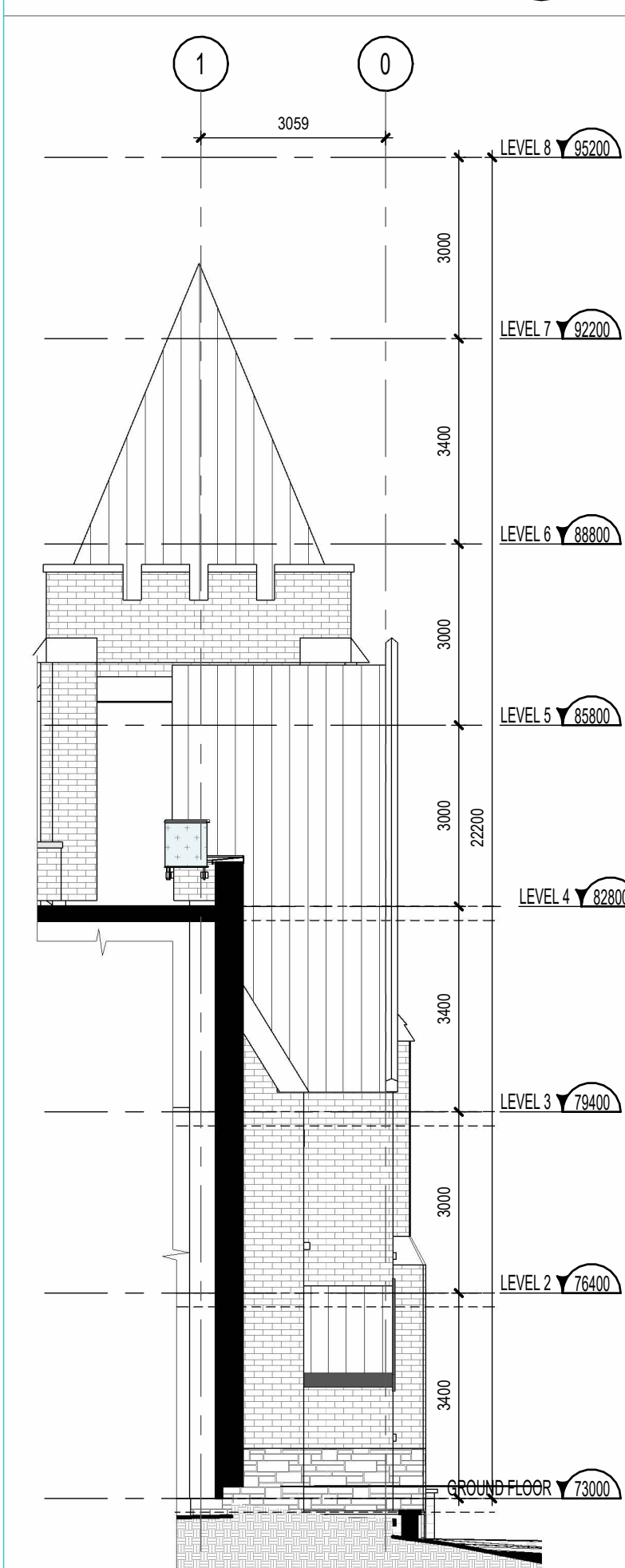
EXISTING NORTH ELEVATION (ARLINGTON AVE.)

1:100 A405



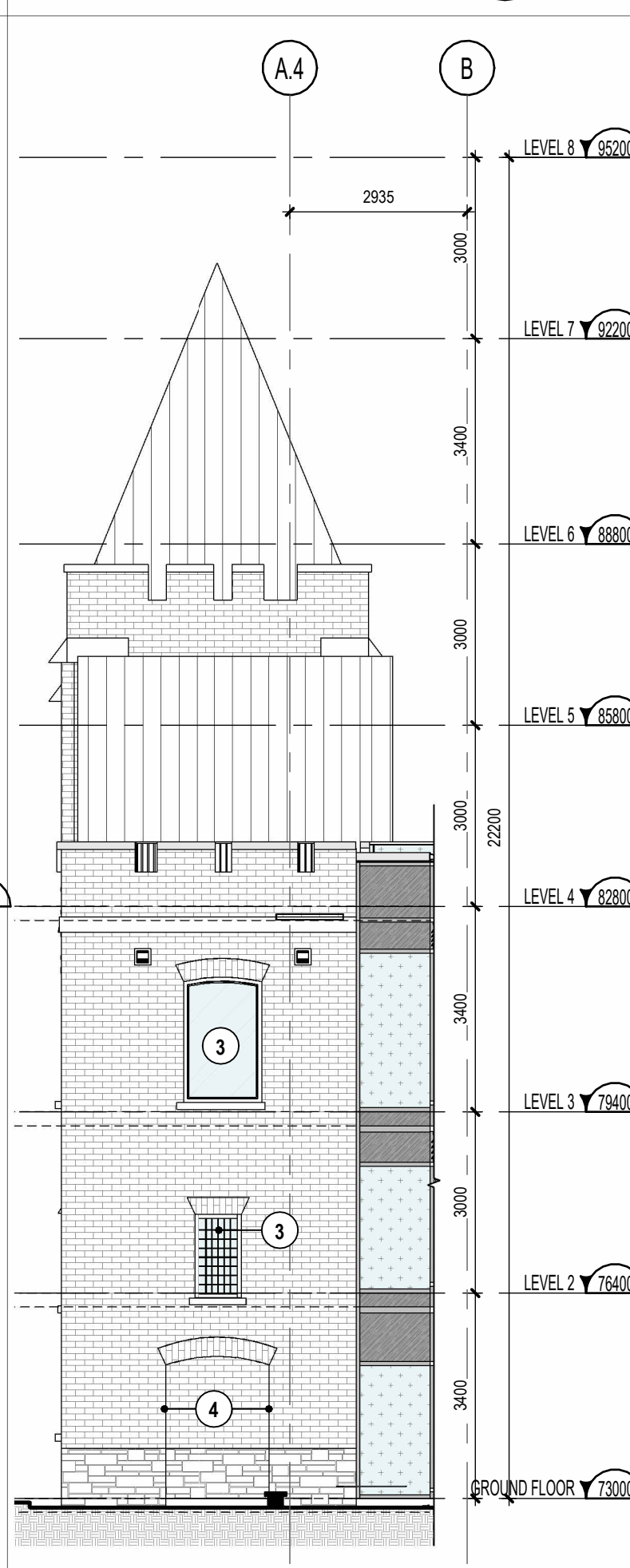
EXISTING WEST ELEVATION (BELL ST.)

1:100 A405



NEW EAST ELEVATION (ARTHUR LANE)

1:100 A405



NEW SOUTH ELEVATION (RAYMOND ST.)

1:100 A405



NEW NORTH ELEVATION (ARLINGTON AVE.)

1:100 A405



NEW WEST ELEVATION (BELL ST.)

1:100 A405

ANDREW MCCREIGHT
MANAGER, DEVELOPMENT REVIEW CENTRAL
PLANNING, DEVELOPMENT & BUILDING SERVICES
DEVELOPMENT DEPARTMENT, CITY OF OTTAWA

APPROVED
By Andrew McCreight at 8:18 am, Mar 11, 2026

SYMB	WORK DESCRIPTION
1	EXISTING WINDOW TO BE REMOVED
2	EXISTING DOOR TO BE REMOVED
3	STAINED GLASS WINDOW AND WOODEN FRAME TO BE REMOVED, RESTORED AND REHABILITATED
4	NEW OPENING
5	NEW WINDOW
6	NEW DOOR

NOTES GÉNÉRALES - General Notes

- Ces documents d'architecture sont la propriété exclusive de NEUF architect(e)s et ne peuvent être utilisés, reproduits ou copiés sans autorisation écrite préalable. / These architectural documents are the exclusive property of NEUF architect(e)s and cannot be used, copied or reproduced without written pre-authorization.
- Les dimensions apparaissant sur ces documents doivent être vérifiées par l'entrepreneur avant le début des travaux. / All dimensions which appear on the documents must be verified by the contractor before to start the work.
- Veuillez vérifier l'architecte de toute dimension envergure et/ou divergences entre ces documents et ceux des autres professionnels. / The architect must be notified of all errors, omissions and discrepancies between these documents and those of the others professionals.
- Les dimensions sur ces documents doivent être lues et non mesurées. / The dimensions on these documents must be read and not measured.

PLANNER
FOLENN Planning and Urban design
306 Copper Street, Ottawa, ON K2P 2H7
T 613 733 5709 www.folenn.com

LANDSCAPE ARCHITECT
SPRUCE LAB
500 Bayview Ave. Suite 300 Toronto, ON M2W 3G8
www.sprucelab.ca

MECHANICAL/ELECTRICAL
Smith + Andersen
600 Carling Avenue, Suite 530 Ottawa, ON K1Z 1G3
T 613 233-1186 www.smithandandersen.com

CIVIL
CIMA+
600-1400 St. Lawrence Place Ottawa, ON K1L 9B8
T 613 562-2442 www.cima.ca

GEOTECHNICAL
PATERSON GROUP
15 King's Drive, Ottawa, ON K1T 1T3
T 613 226 7381 www.patergroup.ca

STRUCTURAL
D+M Structural Engineers
333 Preston Street, Suite 110 Ottawa, ON K1S 5M4
T 613 651-9490 www.d-m-structural.ca

ENVIRONMENTAL
Pinchin Ltd.
1 Hives Road, Suite 200 Kanata, ON K2K 3C7
T 855 746-2446 www.pinchin.com

HERITAGE
Bray Heritage
637 Princess Street, Suite 400 Kingston, ON K7L 1G8
T 613 542-3303 www.brayheritage.com

GENERAL CONTRACTOR
Doran Contractors Ltd.
1197 Allison Rd. Ottawa, ON K1T 1W5
T 613 526-2400 www.doran.ca

ENERGY MODELING
EQ Building Performance Inc
20 Plaza Parkway Concord, ON L4K 4R1
T 416 645-1186 www.eqbuilding.com

ARCHITECT
NEUF architect(e)s
630, Laflamme, 3^e étage, 32^e étage, Montréal QC H3B 1S6
T 514 861-1117 www.neuf.ca



CLIENT Client
150 Egl. St. Suite 1000 Ottawa, ON K2P 1L4
613-633-6600 windmilldevelopments.com

OUVRAGE Project
384 ARLINGTON AVENUE. RESIDENTIAL.

EMPLACEMENT Location
OTTAWA, ON NO. PROJET No.
12805

NO	REVISION	DATE (aa-mm-jj)
A	SPA SUBMISSION	2024-06-07
B	30% COORDINATION	2024 06 14
C	SPA FORMAL SUBMISSION	2024 10 04
D	FOR TENDER 1	2024 10 30
E	FOR COORDINATION	2024 11 08
F	FOR INTERNAL REVIEW 3	2024 11 26
G	SPA FORMAL SUBMISSION - REV. 1	2024 12 04
1	FOR FOUNDATION PERMIT	2024 12 23
2	FOR FOUNDATION PERMIT - R1	2025 06 20
3	FOR INTERNAL REVIEW 4	2025 08 08
4	SPA FORMAL SUBMISSION - REV. 2	2025 10 03
5	80 % COORDINATION	2025 10 24
6	90 % COORDINATION	2025 12 19
7	SPA FORMAL SUBMISSION - REV. 3	2026 01 13

DESSINÉ PAR Drawn by
T.T.
DATE (aa mm jj)
2024-06-07
TITRE DU DESSIN Drawing Title
indicated

VÉRIFIÉ PAR Checked by
R.R./F.P.
ÉCHELLE Scale
As
indicated

CHURCH ELEVATIONS - EXISTING VS. NEW

REVISION Revision NO. DESSIN Dwg Number
7 **A405**