



legend / légende

- TREE PROTECTION FENCING
- PROPERTY LINE
- INDIVIDUAL TREES TO BE REMOVED AND KEY No. - REFER TO TABLE # & REPORT
- INDIVIDUAL TREES TO BE RETAINED AND KEY No. - REFER TO TABLE # & REPORT



DO NOT SCALE DRAWINGS

NOT FOR CONSTRUCTION

rev'n	description / la description	yyyy/mm/dd
01	...	yyyy/mm/dd
00	issue for site plan application	2026/03/09

FOTENN Planning + Design
 420 O'Connor Street
 Ottawa, ON, CANADA K2P 1W4
 613.730.5709
 fotenn.com

north / le nord stamp / le cachet

project / projet
**CARLINGWOOD MALL
 NORTH PARKING, STRUCTURE
 DEMOLITION & REDESIGN**

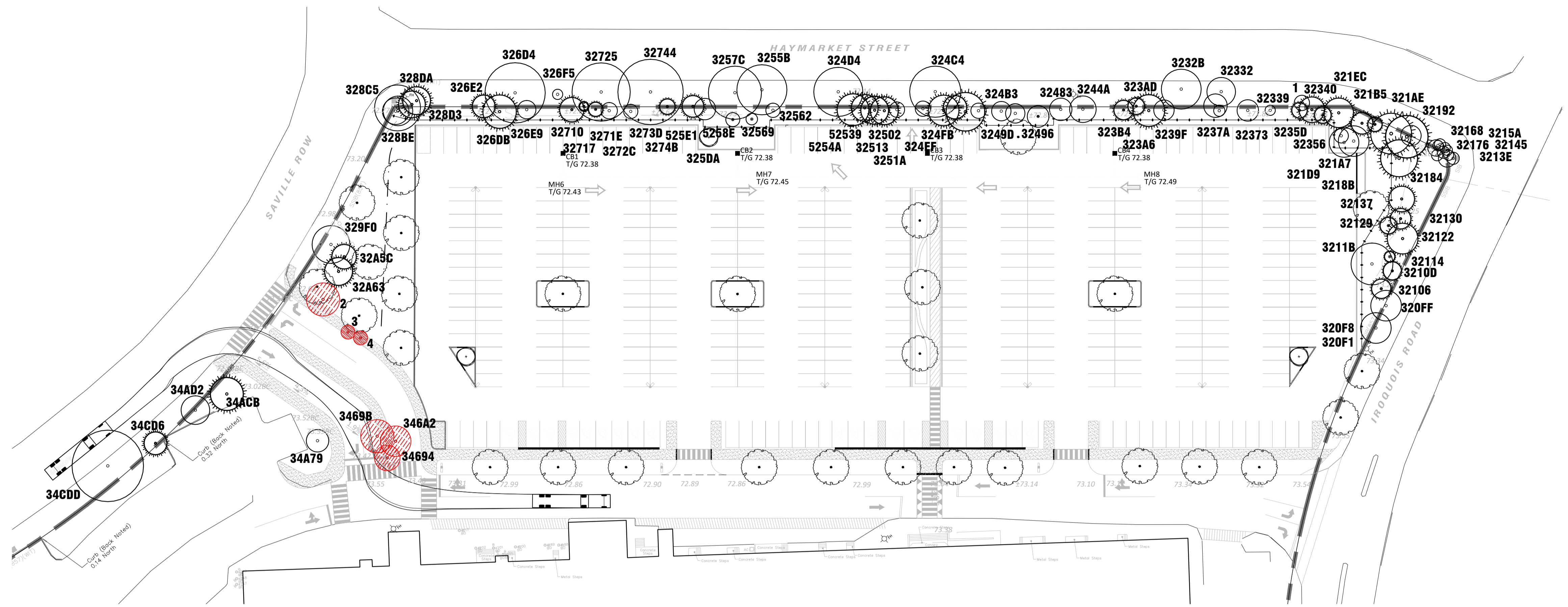
drawing / dessin

TREE CONSERVATION PLAN

designed / conçu	drawn / dessiné	reviewed / examiné
ST / DF	ST	DF
date	project number / No. du projet	
SEPT 2025	X ###-###	

drawing number / No. du dessin

TCP 1



NOTE: THIS PLAN IS TO BE READ IN CONJUNCTION WITH THE Tree Conservation Report AS PREPARED BY Arcadis, DATED 03/12/2025

1 TREE CONSERVATION PLAN
TCP 1:500

TREE PROTECTION SPECIFICATION

TO BE IMPLEMENTED FOR RETAINED TREES, BOTH ON SITE AND ON ADJACENT SITES, PRIOR TO ANY TREE REMOVAL OR SITE WORKS AND MAINTAINED FOR THE DURATION OF WORK ACTIVITIES ON SITE.

SCALE: NTS
 DATE: MARCH 2021
 DRAWING NO.: 1 of 1

ACCESSIBLE FORMATS AND COMMUNICATION SUPPORTS ARE AVAILABLE, UPON REQUEST

2 TREE PROTECTION FENCING
TCP NTS

NO.	Common Name	Scientific Name	DBH (cm) approx.	CRZ (m)	Condition	No. Stems	Comments	Impact / Recommendation
1	Siberian Elm	<i>Ulmus pumila</i>	15	1.5	Good	1	40cm away from manhole	Retain
2	Little-leaf Linden	<i>Tilia cordata</i>	32	3.2	Fair	1		To be Removed
3	Honey-locust	<i>Gleditsia triacanthos</i>	13	1.3	Good	1		To be Removed
320F1	Unknown	<i>Unknown</i>	0	0.0	Dead	1	Tree cut down	Retain
320F8	Norway Maple	<i>Acer platanoides</i>	30	3.0	Very Good	1		Retain
320FF	Norway Maple	<i>Acer platanoides</i>	30	3.0	Very Good	1		Retain
32106	Norway Spruce	<i>Picea abies</i>	19	1.9	Excellent	1		Retain
3210D	Norway Spruce	<i>Picea abies</i>	18	1.8	Very Good	1		Retain
32114	Norway Spruce	<i>Picea abies</i>	10	1.0	Very Good	1		Retain
3211B	Norway Maple	<i>Acer platanoides</i>	41	4.1	Good	1		Retain
32122	Norway Spruce	<i>Picea abies</i>	30	3.0	Good	1		Retain
32129	Norway Spruce	<i>Picea abies</i>	16	1.6	Very Good	1	Leaking sap	Retain
32130	Norway Spruce	<i>Picea abies</i>	20	2.0	Very Good	1		Retain
32137	White Pine	<i>Pinus strobus</i>	25	2.5	Very Good	1		Retain
3213E	Norway Maple	<i>Acer platanoides</i>	12	1.2	Good	1		Retain
32145	Norway Maple	<i>Acer platanoides</i>	10	1.0	Good	1		Retain
3214C	Norway Maple	<i>Acer platanoides</i>	17	1.7	Fair	1		Retain
32153	Norway Maple	<i>Acer platanoides</i>	12	1.2	Very Good	1		Retain
3215A	Norway Maple	<i>Acer platanoides</i>	10	1.0	Very Good	1		Retain
32161	Norway Maple	<i>Acer platanoides</i>	10	1.0	Very Good	3		Retain
32168	Norway Maple	<i>Acer platanoides</i>	11	1.1	Very Good	1		Retain
3216F	Norway Maple	<i>Acer platanoides</i>	10	1.0	Very Good	1		Retain
32176	Norway Maple	<i>Acer platanoides</i>	16	1.6	Good	1	Lilac shrub at base	Retain
3217D	Norway Maple	<i>Acer platanoides</i>	11	1.1	Very Good	1		Retain
32184	Eastern White Pine	<i>Pinus strobus</i>	36	3.6	Good	1		Retain
3218B	Eastern White Cedar	<i>Thuja occidentalis</i>	42	4.2	Good	4		Retain
32192	Norway Maple	<i>Acer platanoides</i>	20	2.0	Very Good	1		Retain
321A7	Eastern White Pine	<i>Pinus strobus</i>	40	4.0	Very Good	1		Retain
321AE	Norway Spruce	<i>Picea abies</i>	14	1.4	Very Good	1		Retain
321B5	Norway Spruce	<i>Picea abies</i>	21	2.1	Very Good	1		Retain
321D2	Norway Spruce	<i>Acer platanoides</i>	30	3.0	Very Good	1		Retain
321D9	American Basswood	<i>Tilia americana</i>	29	2.9	Very Good	2		Retain
321E0	Norway Maple	<i>Acer platanoides</i>	14	1.4	Good	1		Retain
321EC	Norway Spruce	<i>Picea abies</i>	29	2.9	Very Good	1		Retain
3232B	Northern Red Oak	<i>Quercus rubra</i>	39	3.9	Very Good	1		Retain
32332	Norway Maple	<i>Acer platanoides</i>	28	2.8	Fair	1		Retain
32339	Common Buckthorn	<i>Rhamnus cathartica</i>	10	1.0	Very Good	4		Retain
32340	Norway Spruce	<i>Picea abies</i>	25	2.5	Very Good	1		Retain
32356	Norway Spruce	<i>Picea abies</i>	16	1.6	Good	1		Retain
3235D	Norway Spruce	<i>Picea abies</i>	15	1.5	Fair	1		Retain
32373	Apple Spp.	<i>Malus spp.</i>	21	2.1	Good	1		Retain
3237A	Apple Spp.	<i>Malus spp.</i>	11	1.1	Fair	1		Retain
3237A	Norway Spruce	<i>Picea abies</i>	23	2.3	Good	1		Retain
3239F	Apple Spp.	<i>Malus spp.</i>	20	2.0	Fair	2		Retain
323A6	Norway Maple	<i>Acer platanoides</i>	31	3.1	Very Good	1		Retain
323AD	Norway Spruce	<i>Picea abies</i>	16	1.6	Fair	1		Retain
323B4	Norway Spruce	<i>Picea abies</i>	19	1.9	Good	1		Retain
32443	Apple Spp.	<i>Malus spp.</i>	26	2.6	Good	1		Retain
3244A	Apple Spp.	<i>Malus spp.</i>	22	2.2	Good	2		Retain
32483	Apple Spp.	<i>Malus spp.</i>	21	2.1	Very Good	2		Retain
32496	Apple Spp.	<i>Malus spp.</i>	19	1.9	Fair	2		Retain
3249D	Apple Spp.	<i>Malus spp.</i>	19	1.9	Very Good	3		Retain
324B3	Apple Spp.	<i>Malus spp.</i>	15	1.5	Good	1		Retain
324C4	Siberian Elm	<i>Ulmus pumila</i>	50	5.0	Very Good	1		Retain
324D4	Siberian Elm	<i>Ulmus pumila</i>	48	4.8	Very Good	1		Retain
324EF	Red Spruce	<i>Picea rubens</i>	38	3.8	Very Good	1		Retain
324FB	Red Pine	<i>Pinus resinosa</i>	23	2.3	Very Good	1		Retain
32502	Red Pine	<i>Pinus resinosa</i>	30	3.0	Very Good	1		Retain
32513	Apple Spp.	<i>Malus spp.</i>	15	1.5	Good	3		Retain
3251A	Apple Spp.	<i>Malus spp.</i>	15	1.5	Poor	3		Retain
32521	Red Pine	<i>Pinus resinosa</i>	27	2.7	Very Good	1		Retain
32532	Red Pine	<i>Pinus resinosa</i>	27	2.7	Good	1		Retain
3255B	Siberian Elm	<i>Ulmus pumila</i>	49	4.9	Very Good	1		Retain
32562	Apple Spp.	<i>Malus spp.</i>	14	1.4	Good	1		Retain
32569	Apple Spp.	<i>Malus spp.</i>	11	1.1	Good	1		Retain
3257C	Siberian Elm	<i>Ulmus pumila</i>	52	5.2	Fair	1		Retain
325DA	Apple Spp.	<i>Malus spp.</i>	21	2.1	Very Good	2		Retain
326D4	Siberian Elm	<i>Ulmus pumila</i>	59	5.9	Very Good	1		Retain
326D8	Norway Spruce	<i>Picea abies</i>	33	3.3	Good	1		Retain
326E2	White Spruce	<i>Picea glauca</i>	22	2.2	Excellent	1		Retain
326E9	Apple Spp.	<i>Malus spp.</i>	18	1.8	Very Good	1		Retain
326F5	American Basswood	<i>Tilia americana</i>	10	1.0	Excellent	1		Retain
32710	White Spruce	<i>Picea glauca</i>	24	2.4	Very Good	1		Retain
32717	White Spruce	<i>Picea glauca</i>	8	0.8	Very Good	1		Retain
3271E	Norway Spruce	<i>Picea abies</i>	14	1.4	Good	1		Retain
32725	Siberian Elm	<i>Ulmus pumila</i>	57	5.7	Good	1		Retain
3272C	Apple Spp.	<i>Malus spp.</i>	16	1.6	Fair	3		Retain
3273D	Apple Spp.	<i>Malus spp.</i>	14	1.4	Fair	2		Retain
32744	Siberian Elm	<i>Ulmus pumila</i>	64	6.4	Fair	1		Retain
3274B	White Spruce	<i>Picea glauca</i>	15	1.5	Very Good	1		Retain
328B7	Siberian Elm	<i>Ulmus pumila</i>	26	2.6	Good	1		Retain
328B8	Siberian Elm	<i>Ulmus pumila</i>	29	2.9	Very Good	1		Retain
328C5	Siberian Elm	<i>Ulmus pumila</i>	45	4.5	Excellent	1		Retain
328D3	Siberian Elm	<i>Ulmus pumila</i>	26	2.6	Fair	1		Retain
328DA	Eastern White Cedar	<i>Thuja occidentalis</i>	27	2.7	Good	3		Retain
329F0	Little-leaf Linden	<i>Tilia cordata</i>	37	3.7	Very Good	1		Retain
32A5C	Red Pine	<i>Pinus resinosa</i>	24	2.4	Very Good	1		Retain
32A63	Red Pine	<i>Pinus resinosa</i>	27	2.7	Good	1		Retain
34694	Honey-locust	<i>Gleditsia triacanthos</i>	25	2.5	Excellent	2		To be Removed
3469B	Honey-locust	<i>Gleditsia triacanthos</i>	32	3.2	Excellent	1		To be Removed
346A2	Honey-locust	<i>Gleditsia triacanthos</i>	30	3.0	Excellent	1		To be Removed
34A79	Little-leaf Linden	<i>Tilia cordata</i>	22	2.2	Very Good	1		Retain
34AcB	Red Pine	<i>Pinus resinosa</i>	32	3.2	Very Good	1		Retain
34AD2	Siberian Elm	<i>Ulmus pumila</i>	28	2.8	Fair	4		Retain
34C88	Honey-locust	<i>Gleditsia triacanthos</i>	37	3.7	Excellent	1		Retain
34C94	Honey-locust	<i>Gleditsia triacanthos</i>	21	2.1	Very Good	1		Retain
34CA4	Honey-locust	<i>Gleditsia triacanthos</i>	30	3.0	Very Good	1		Retain

PROJECT CONSULTANTS

DEVELOPER / OWNER
ANTHEM PROPERTIES GROUP
 1055 Dunsmuir Street
 Vancouver BC Canada V7X 1K8
 PHONE: 604-901-0240

PLANNING / LANDSCAPE
FOTENN PLANNING + DESIGN
 420 O'CONNOR ST.
 OTTAWA, ONTARIO K2P 1W4
 PHONE: 613-730-5709

CIVIL
EGIS GROUP
 750 Palladium Drive, Suite 310
 Kanata, ONTARIO K2V 1C7
 PHONE: 613-714-6174

SURVEYOR
ANNIS, O'SULLIVAN, VOLLEBEKK LTD.
 14 CONCOURSE GATE, SUITE 500
 NEPEAN, ON K2E 7S6
 PHONE: 613-727-0850

NOTE
 Property boundary information derived from
ANNIS, O'SULLIVAN, VOLLEBEKK LTD.
 Part 1 of Plan 4R-4502 and Block A of Registered
 Plan 316039

SITE INFORMATION

ZONING GM24[90]-h S125

LANDSCAPE BUFFER Per Schedule 125

SITE AREA
 Total Site Area: **14,392 m²**

TOTAL MALL PARKING	MIN	MAX	Provided
	975	2117	1641

NORTH PARKING LOT (application area)
 Driveway Width **6.7m**
 Aisle Width **6.7m**
 Parking Space Dimensions **2.6 m x 5.2 m**
 Parking Space Provided **384**

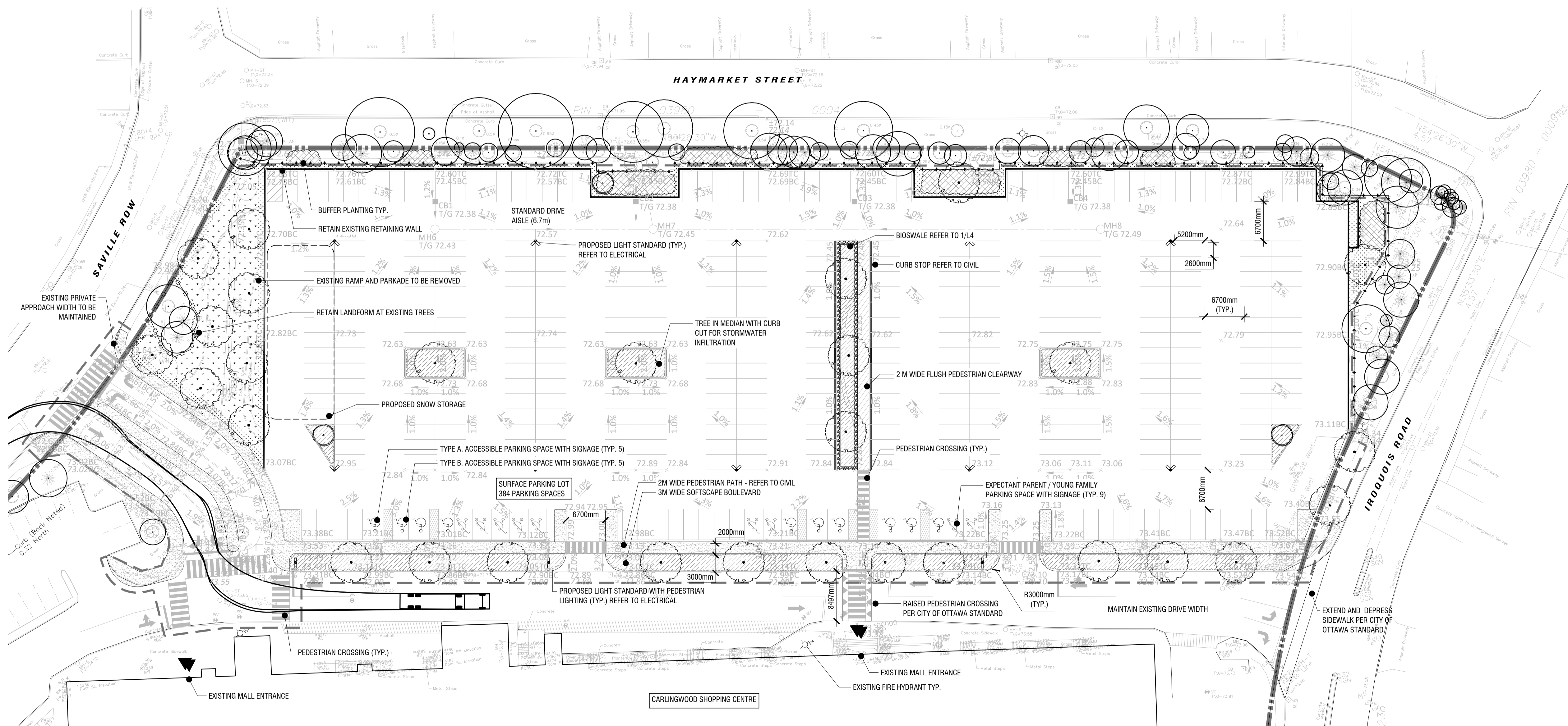
LANDSCAPE AREA
 Total Site Area: **14,392 m²**
 Softscape Landscape Area: **2,770 m²**
 Hardscape Landscape Area: **598 m²**
 % Landscape Area: **23%**

SNOW MANAGEMENT
 See plan for proposed snow storage area.

NOTES:
 DO NOT SCALE DRAWINGS;
 NOTES ARE APPLICABLE TO ALL DRAWINGS IN THE SET;
 Fotenn Consultants Inc. IS NOT RESPONSIBLE FOR ACCURACY OF BASE INFORMATION;
 REFER TO CIVIL ENGINEERING DRAWINGS FOR GRADING & SITE SERVICING INFORMATION;
 THE CONTRACTOR IS RESPONSIBLE FOR CONFIRMING SITE CONDITIONS AND REPORTING ANY DISCREPANCIES TO THE LANDSCAPE ARCHITECT;
 THE CONTRACTOR IS RESPONSIBLE FOR CONFIRMING EXACT LOCATIONS OF ALL UNDERGROUND SERVICES AND OBTAINING CLEARANCE FROM ALL APPLICABLE UTILITIES. PROPOSED WORKS FOUND TO BE IN CONFLICT WITH UNDERGROUND SERVICES MAY BE ADJUSTED AT THE DIRECTION OF THE LANDSCAPE ARCHITECT;
 LANDSCAPE ELEMENTS SHOWN ARE SUBJECT TO THE FINAL LOCATION OF UNDERGROUND SERVICES AND UTILITIES;
 DO NOT INSTALL TREES ON PROPERTY / LOT LINES OR WITHIN DRAINAGE EASEMENTS;
 PERFORM WORK IN ACCORDANCE WITH DETAILS AND SPECIFICATIONS;
 ALL PLANT MATERIAL SHALL BE No. 1 NURSERY STOCK AND SHALL MEET OR EXCEED THE SPECIFICATION OF THE Canadian Standards for Nursery Stock, AS PUBLISHED BY THE Canadian Nursery Landscape Association;
 SPECIES SUBSTITUTIONS ARE NOT PERMITTED WITHOUT PRIOR WRITTEN APPROVAL OF THE LANDSCAPE ARCHITECT;
 ALL UN-PAVED SURFACES TO RECEIVE 150mm DEPTH TOPSOIL & SOD.

STANDARDS FOR TREE PLANTING:
 NO PLANTING ON CORNERS OR ANYWHERE WHERE IT WOULD CREATE A SIGHT LINE CONCERN;
 MAINTAIN A MINIMUM DISTANCE OF 7.5m FROM ALL BUILDINGS;
 MAINTAIN A MINIMUM DISTANCE OF 2.5m FROM THE CURB FOR DECIDUOUS TREES AND 4.5m FOR CONIFEROUS TREES;
 MAINTAIN A MINIMUM DISTANCE OF 1.5m FOR DECIDUOUS (4.5m FOR CONIFERS) FROM ANY SIDEWALK OR PRIVATE WALKWAY;
 MAINTAIN A MINIMUM DISTANCE OF 1.2m FROM ALL DRIVEWAYS;
 MAINTAIN A MINIMUM DISTANCE OF 2.5m FROM COMMUNITY MAILBOXES, LIGHT STANDARDS, FIRE HYDRANTS AND NO PLANTING IN FRONT OF HYDRANTS;
 MAINTAIN A MINIMUM DISTANCE OF 3.0m FROM ALL HYDRO TRANSFORMERS;
 MAINTAIN A MINIMUM DISTANCE OF 1.0m FROM ALL UNDERGROUND SERVICES;
 MAINTAIN A MINIMUM DISTANCE OF 1.0m FROM ALL BELL AND CABLE BOXES;
 MAINTAIN A MINIMUM DISTANCE OF 10.0 FROM BUS SHELTERS
IMPORTANT NOTICE FOR CONTRACTOR:
 THE CITY OF OTTAWA REQUIRES A Certificate of Completion (F1) Landscape Works TO BE SUBMITTED AND SEALED BY THE LANDSCAPE ARCHITECT. CONTRACTORS ARE RESPONSIBLE FOR FAMILIARIZING THEMSELVES WITH THE REQUIREMENTS OF THIS PROCESS AND PROVIDING SUFFICIENT NOTICE TO THE LANDSCAPE ARCHITECT TO CONDUCT SITE REVIEWS DURING INSTALLATION OF TREES. THE 1 YEAR WARRANTY PERIOD SHALL NOT COMMENCE UNTIL THE LANDSCAPE ARCHITECT HAS SUBMITTED THE F1 Certificate.

NOT FOR CONSTRUCTION



Copyright Reserved
 The Copyrights in all designs and drawings are the property of Fotenn Consultants Inc. Unauthorized reproduction or use is forbidden. DO NOT SCALE DRAWING
 Copyright réservés
 Les droits d'auteur à tous les modèles et dessins sont la propriété de Fotenn Consultants Inc. Reproduction ou utilisation non autorisée est interdite. NE PAS L'ÉCHELLE DE DESSIN
 Client / Client



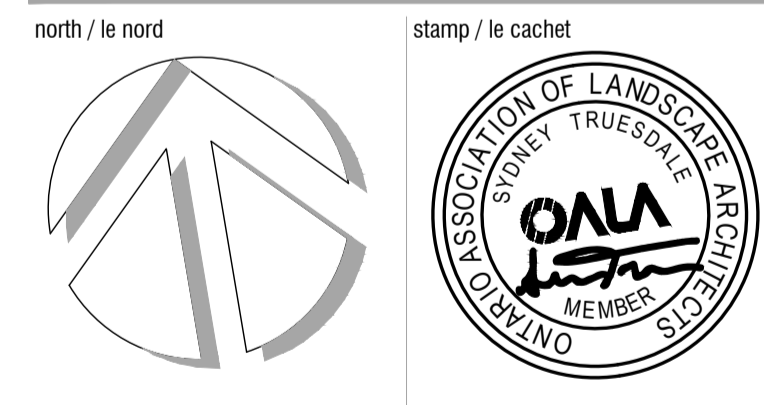
- legend / légende
- PROPERTY LINE
 - LIMIT OF WORK
 - TREE PROTECTION FENCING (REFER TO TREE PROTECTION)
 - EXISTING TREES (REFER TO TREE CONSERVATION REPORT)
 - PROPOSED DECIDUOUS TREES (REFER TO PLANTING SCHEDULE)
 - PROPOSED BUFFER PLANTING (REFER TO PLANTING SCHEDULE)
 - PROPOSED PERENNIAL PLANTING (REFER TO PLANTING SCHEDULE)
 - PROPOSED CONCRETE SIDEWALK (REFER TO CIVIL)
 - REINSTATED SOD
 - PROPOSED LIGHT STANDARD WITH PEDESTRIAN LIGHTING

SCALE 1:400
 0 5 10 20 30m
 DO NOT SCALE DRAWINGS

NOT FOR CONSTRUCTION

01	yyyy/mm/dd
00	Issue for site plan application	2026/03/09
rev'n	description / la description	yyyy/mm/dd

FOTENN Planning + Design
 420 O'Connor Street
 Ottawa, ON, CANADA K2P 1W4
 613.730.5709
 fotenn.com



project / projet
**CARLINGWOOD MALL
 NORTH PARKING, STRUCTURE
 DEMOLITION & REDESIGN**

drawing / dessin

LANDSCAPE SITE PLAN

designed / conçu ST / DF	drawn / dessiné ST	reviewed / examiné DF
date SEPT 2025	project number / No. du projet X ###-###	

drawing number / No. du dessin
L1

1 SITE PLAN
L1 1:400

PLOT DATE: 2026-03-09 12:32:47 PM PLOT DATE: 2026-03-09 12:32:47 PM SHEET SIZE: 350 x 500 mm SHEET SIZE: 350 x 500 mm PLOT BY: Sydney Hummel LAST SAVED BY: mstade

TREE PLANTING SCHEDULE

CODE	QTY	BOTANICAL NAME	COMMON NAME	SIZE / CONDITION / SPACING	NATIVE
DECIDUOUS TREES					
AS2	7	Acer saccharum	Sugar Maple	70mm cal. / W.B.	Native
AC2	3	Amelanchier canadensis	Canadian Serviceberry	50mm cal. / W.B. (single stem, tree form)	Native
GB3	7	Ginkgo biloba 'Autumn Gold'	Autumn Gold Maidenhair Tree	70mm cal. / W.B.	Non-Native
GT3	3	Gleditsia triacanthos inermis 'Shademaster'	Shademaster Honey Locust	70mm cal. / W.B.	Native
GT	3	Gleditsia triacanthos inermis 'Sunburst'	Sunburst Honey Locust	60mm cal. / W.B.	Native
GSS	3	Gleditsia triacanthos inermis 'Suncoke'	Sunburst Honey Locust	60mm cal. / W.B.	Native
GK	3	Gymnocladus dioica 'Espresso'	Kentucky Coffeetree 'Espresso'	60mm cal. / W.B.	Native
QA	3	Quercus alba	White Oak	---	Native

PERENNIAL PLANTING SCHEDULE

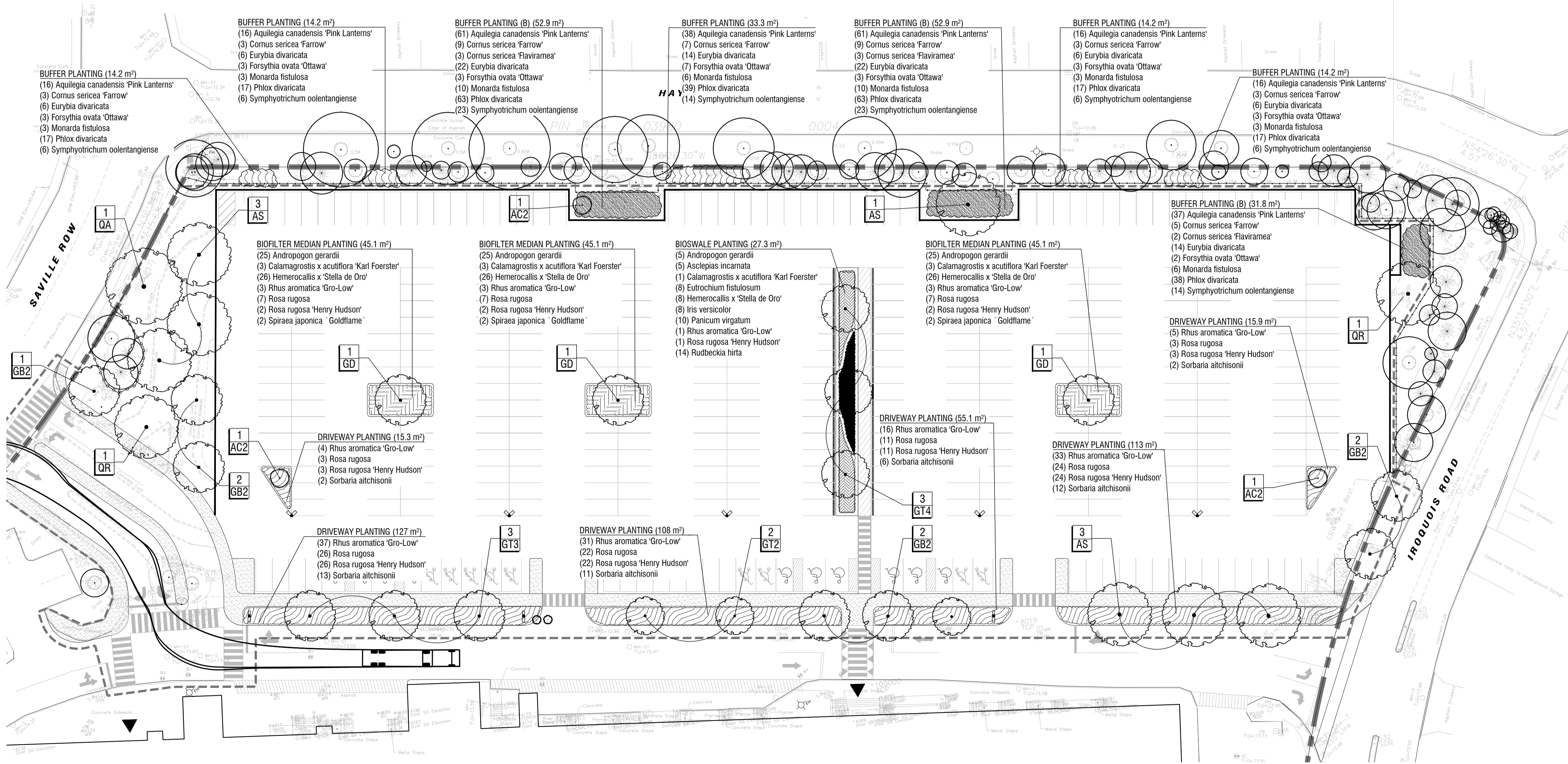
CODE	QTY	BOTANICAL NAME	COMMON NAME	SIZE / CONDITION / SPACING	NATIVE
BIOFILTER MEDIAN PLANTING					
75	75	Andropogon gerardii / Big Bluestem		#1 Pot / 75cm sp.	
9	9	Calamagrostis x acutiflora 'Karl Foerster' / Karl Foerster Feather Reed Grass		#1 Pot / 60cm sp.	
78	78	Hemerocallis x 'Stella de Oro' / Stella de Oro Daylily		#1 Pot / 60cm sp.	
9	9	Rhus aromatica 'Gro-Low' / Gro-Low Fragrant Sumac		#1 Pot / Refer to plan for spacing	
21	21	Rosa rugosa / Rugosa Rose		#2 Pot / 90cm sp.	
2	2	Rosa rugosa 'Henry Hudson' / Henry Hudson Rose		#3 Pot / 100cm sp.	
6	6	Spiraea japonica 'Goldflame' / Goldflame Japanese Spirea		#2 Pot / 100cm sp.	

CODE	QTY	BOTANICAL NAME	COMMON NAME	SIZE / CONDITION / SPACING	NATIVE
BIOSWALE PLANTING					
16	16	Andropogon gerardii / Big Bluestem		#1 Pot / 75cm sp.	
16	16	Asclepias incarnata / Swamp Milkweed		#1 Pot / 75cm sp.	
3	3	Calamagrostis x acutiflora 'Karl Foerster' / Karl Foerster Feather Reed Grass		#1 Pot / 60cm sp.	
25	25	Eutrochium fistulosum / Hollow Joe Pye Weed		#1 Pot / 60cm sp.	
25	25	Hemerocallis x 'Stella de Oro' / Stella de Oro Daylily		#1 Pot / 60cm sp.	
25	25	Iris versicolor / Blue Flag		#1 Pot / 60cm sp.	
32	32	Panicum virgatum / Switch Grass		#1 Pot / 75cm sp.	
3	3	Rhus aromatica 'Gro-Low' / Gro-Low Fragrant Sumac		#1 Pot / Refer to plan for spacing	
4	4	Rosa rugosa 'Henry Hudson' / Henry Hudson Rose		#3 Pot / 100cm sp.	
44	44	Rudbeckia hirta / Black-eyed Susan		#1 Pot / 45cm sp.	

CODE	QTY	BOTANICAL NAME	COMMON NAME	SIZE / CONDITION / SPACING	NATIVE
DRIVEWAY PLANTING					
126	126	Rhus aromatica 'Gro-Low' / Gro-Low Fragrant Sumac		#1 Pot / Refer to plan for spacing	
89	89	Rosa rugosa / Rugosa Rose		#2 Pot / 90cm sp.	
89	89	Rosa rugosa 'Henry Hudson' / Henry Hudson Rose		#3 Pot / 100cm sp.	
46	46	Sorbaria atchisonii / False Spiraea		#2 Pot / 100cm sp.	

CODE	QTY	BOTANICAL NAME	COMMON NAME	SIZE / CONDITION / SPACING	NATIVE
BUFFER PLANTING					
102	102	Aquilegia canadensis 'Pink Lanterns' / Pink Lanterns Eastern Columbine		#1 Pot / 30cm cp.	
19	19	Cornus sericea 'Farrow' / Arctic Fire® Red Twig Dogwood		#3 Pot / 125cm sp.	
38	38	Eurybia divaricata / White Wood Aster		#1 Pot / 50cm sp.	
19	19	Forsythia ovata 'Ottawa' / Early Forsythia		#3 Pot / 100cm sp.	
18	18	Monarda fistulosa / Bergamot		#1 Pot / 75cm sp.	
107	107	Phlox divaricata / Woodland Phlox		#1 Pot / 30cm cp.	
38	38	Symphytichum oolentangense / Sky Blue Aster		#1 Pot / 50cm sp.	

CODE	QTY	BOTANICAL NAME	COMMON NAME	SIZE / CONDITION / SPACING	NATIVE
BUFFER PLANTING (B)					
159	159	Aquilegia canadensis 'Pink Lanterns' / Pink Lanterns Eastern Columbine		#1 Pot / 30cm cp.	
23	23	Cornus sericea 'Farrow' / Arctic Fire® Red Twig Dogwood		#3 Pot / 125cm sp.	
8	8	Cornus sericea 'Flaviramea' / Yellow Twig Dogwood		#3 Pot / 200cm sp.	
5	5	Eurybia divaricata / White Wood Aster		#1 Pot / 50cm sp.	
8	8	Forsythia ovata 'Ottawa' / Early Forsythia		#3 Pot / 100cm sp.	
26	26	Monarda fistulosa / Bergamot		#1 Pot / 75cm sp.	
164	164	Phlox divaricata / Woodland Phlox		#1 Pot / 30cm cp.	
60	60	Symphytichum oolentangense / Sky Blue Aster		#1 Pot / 50cm sp.	

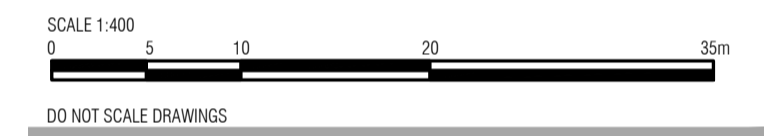
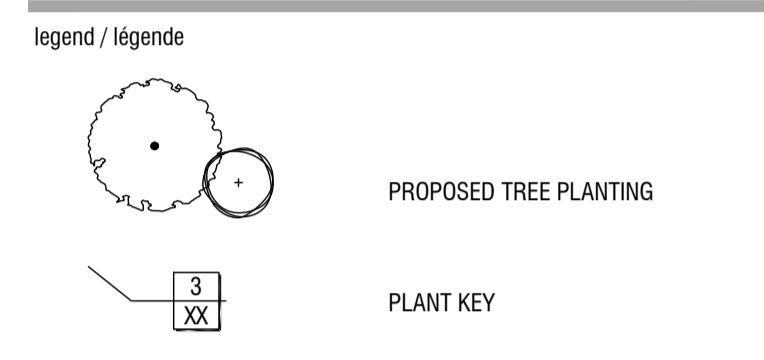


1 PLANTING PLAN
L2 1:400

Copyright Reserved
The Copyrights to all designs and drawings are the property of Fotenn Consultants Inc. Unauthorised reproduction or use is forbidden. DO NOT SCALE DRAWING

Copyright réservés
Les droits d'auteur à tous les modèles et dessins sont la propriété de Fotenn Consultants Inc. Reproduction ou utilisation non autorisée est interdite. NE PAS L'ÉCHELLE DE DESSIN

Client / Client



DO NOT SCALE DRAWINGS

NOT FOR CONSTRUCTION	
01	yyyy/mm/dd
00	Issue for site plan application 2026/03/09
rev'n	description / la description yyyy/mm/dd

FOTENN Planning + Design
420 O'Connor Street
Ottawa, ON, CANADA K2P 1W4
613.730.5709
fotenn.com

north / le nord stamp / le cachet

project / projet
**CARLINGWOOD MALL
NORTH PARKING, STRUCTURE
DEMOLITION & REDESIGN**

drawing / dessin

LANDSCAPE PLAN

designed / conçu ST / DF	drawn / dessiné ST	reviewed / examiné DF
date SEPT 2025	project number / No. du projet X ###-###	

drawing number / No. du dessin

L2

PLANT INFORMATION: DWG NAME: P:\PROJECTS\Carlingwood Mall\Planting Schedule\Carlingwood Mall - SHEET PLANTING.dwg PLOT DATE: 2026-09-09 12:28:03 PM SHEET SIZE: 300mm (width) x 450mm (height) PLOT DATE: 2026-09-09 12:28:03 PM SHEET SIZE: 300mm (width) x 450mm (height) PLOT DATE: 2026-09-09 12:28:03 PM SHEET SIZE: 300mm (width) x 450mm (height)



key plan / plan repère



legend / légende

- LIMIT OF WORK
- EXISTING TREES AND HEDGEROW CANOPY (REFER TO NOTES)
- CRITICAL ROOTING ZONE (CRZ)
- APPROXIMATE CANOPY AT 40 YEARS
- PROPOSED TREE
- EXTENT OF GROWING MEDIUM

SCALE 1:400
0 5 10 20 35m
DO NOT SCALE DRAWINGS

NOT FOR CONSTRUCTION

01	...	yyyy/mm/dd
00	Issue for site plan application	2026/03/09
rev'n	description / la description	yyyy/mm/dd

FOTENN Planning + Design
420 O'Connor Street
Ottawa, ON, CANADA K2P 1W4
613.730.5709
fotenn.com

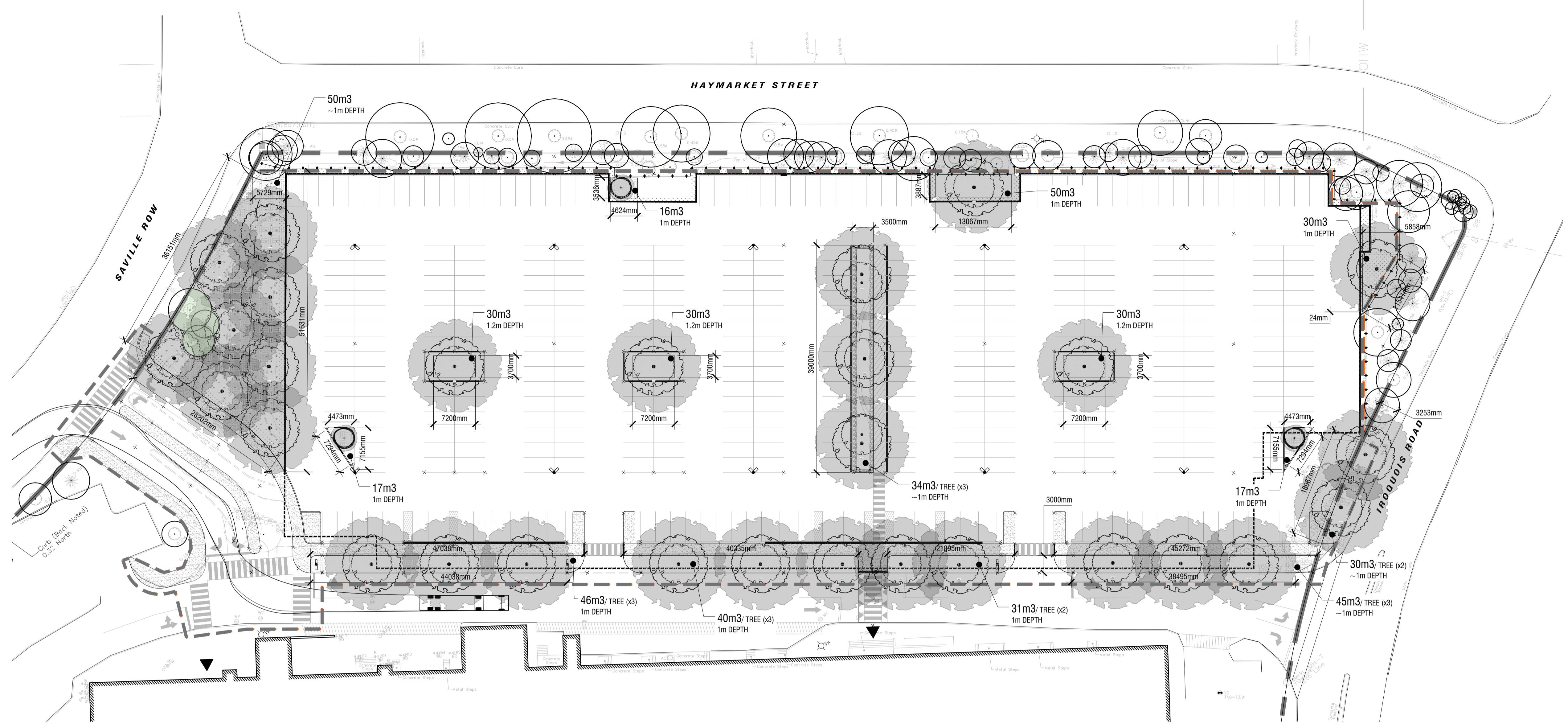
north / le nord stamp / le cachet

project / projet
**CARLINGWOOD MALL
NORTH PARKING, STRUCTURE
DEMOLITION & REDESIGN**

drawing / dessin
**TREE 40YR PROJECTED
CANOPY COVER AND SOIL
VOLUME CALCULATIONS**

designed / conçu	drawn / dessiné	reviewed / examiné
ST / DF	ST	DF
date	project number / No. du projet	
SEPT 2025	X ##-##	

drawing number / No. du dessin
L3



1 TREE 40YR PROJECTED CANOPY COVER AND SOIL VOLUME PLAN
L3 1:400

PROPOSED TREE CANOPY PROJECTIONS (40 YEAR) & SOIL VOLUME REQUIREMENTS

CANOPY PROJECTIONS (NTS)	AVERAGE CROWN AREA PER TREE (m ²)	QTY OF TREES	TOTAL TREE CANOPY COVERAGES	PROPOSED CANOPY COVERAGES	SOIL VOLUME REQUIREMENT*	CONTINUOUS SPACE SOIL VOLUME (i.e. 2 TREES/1 GREENSPACE)
SMALL DECIDUOUS TREE (AVG. CANOPY DIAMETER = 4.5m)	16m ²	3	48m ²	5877m ²	25m ³ 4100mm	2500mm
MEDIUM DECIDUOUS TREE (AVG. CANOPY DIAMETER = 8.5m)	57m ²	0	0m ²	64m ²	30m ³ 5000mm	2400mm
LARGE DECIDUOUS TREE (AVG. CANOPY DIAMETER = 16m)	201m ²	29	5,829m ²	14,815m ²	30m ³ 6300mm	2400mm
				TOTAL COVERAGE	30m ³ 3160mm	
				5,925m ²		
				40%		

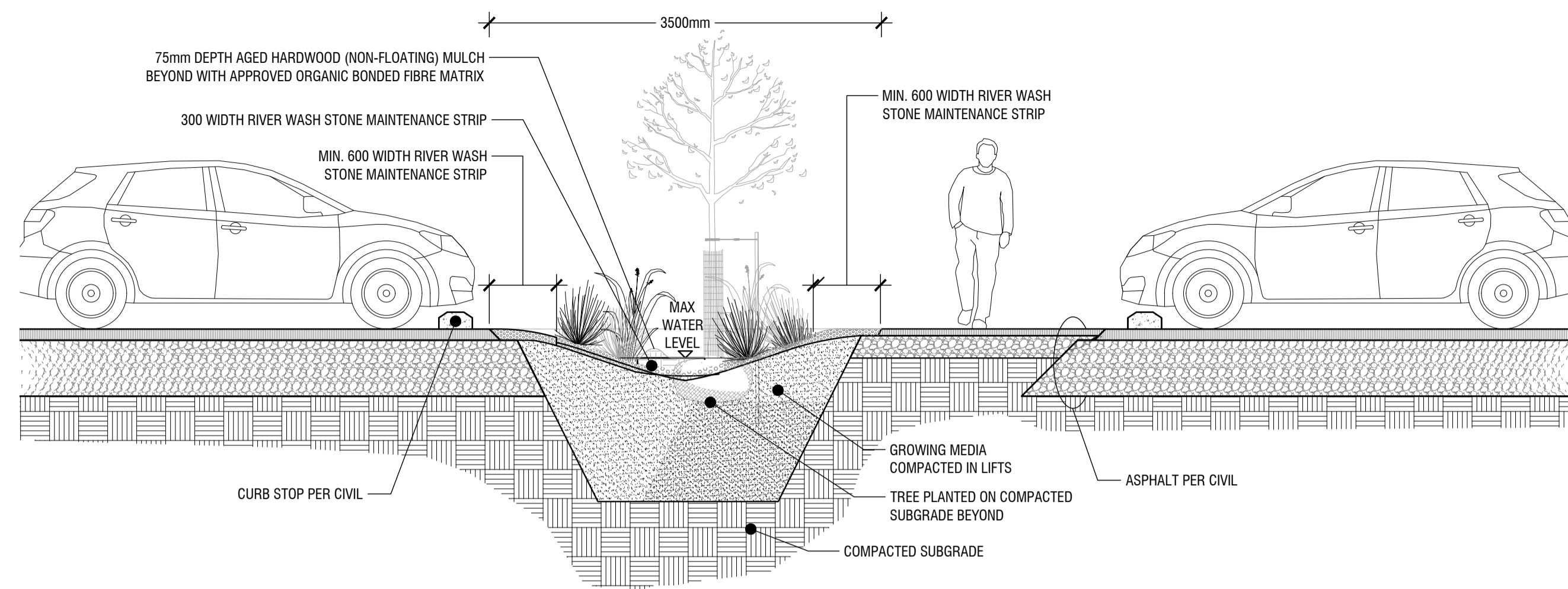
- NOTES:**
- CALCULATIONS HAVE BEEN MADE TO PROJECT A 40 YEAR HORIZON AND TYPICAL GROWTH RATES FOR ALL TREES
 - PROJECTED CANOPY DIAMETERS AND AREAS ARE BASED ON AN AVERAGE OF THE TREES PROPOSED FOR THE SITE
 - PROJECTED CANOPY AREAS FOR EXISTING TREES ARE BASED ON AVERAGE OF THE TREES PLANTED AS PART OF PREVIOUS PHASES
 - OVERLAPPING CANOPIES AREAS FOR EXISTING TREES ARE ONLY COUNTED ONCE WHERE APPLICABLE
 - CANOPY CALCULATION DOES NOT ACCOUNT FOR EXISTING TREE CANOPY ON ADJACENT SITES/IN ROW OVERLAPPING SITE
 - CANOPY CALCULATIONS INCLUDE OVERLAPPING OF ADJACENT TREE CANOPIES WHERE APPLICABLE
 - *SOIL VOLUME REQUIREMENT IS BASED ON THE CITY OF OTTAWA'S 'Tree Planting in Sensitive Marine Clay Soils - 2017 Guidelines' DRAFT Version 2.0 DATED JANUARY 11, 2019



key plan / plan repère

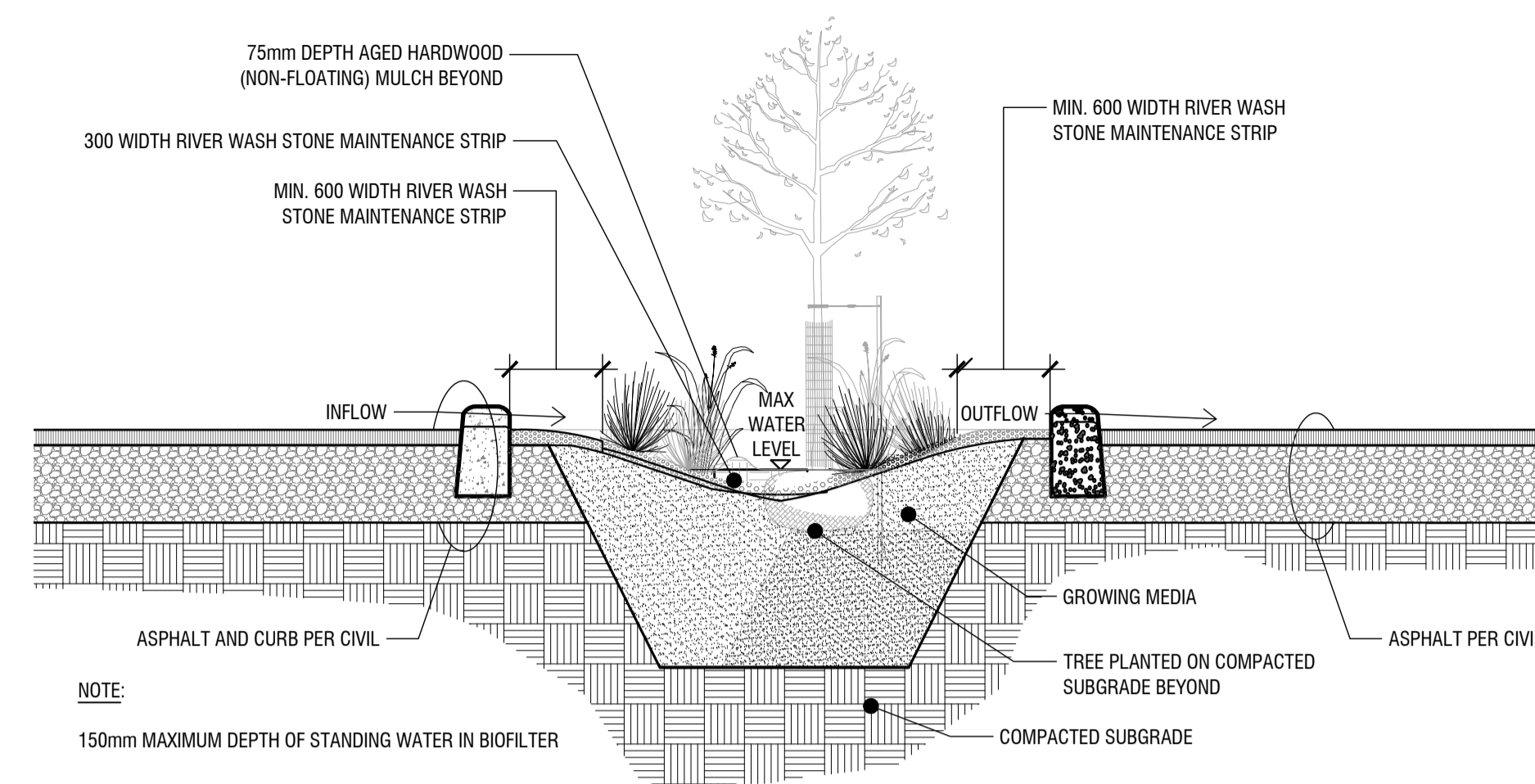


legend / légende



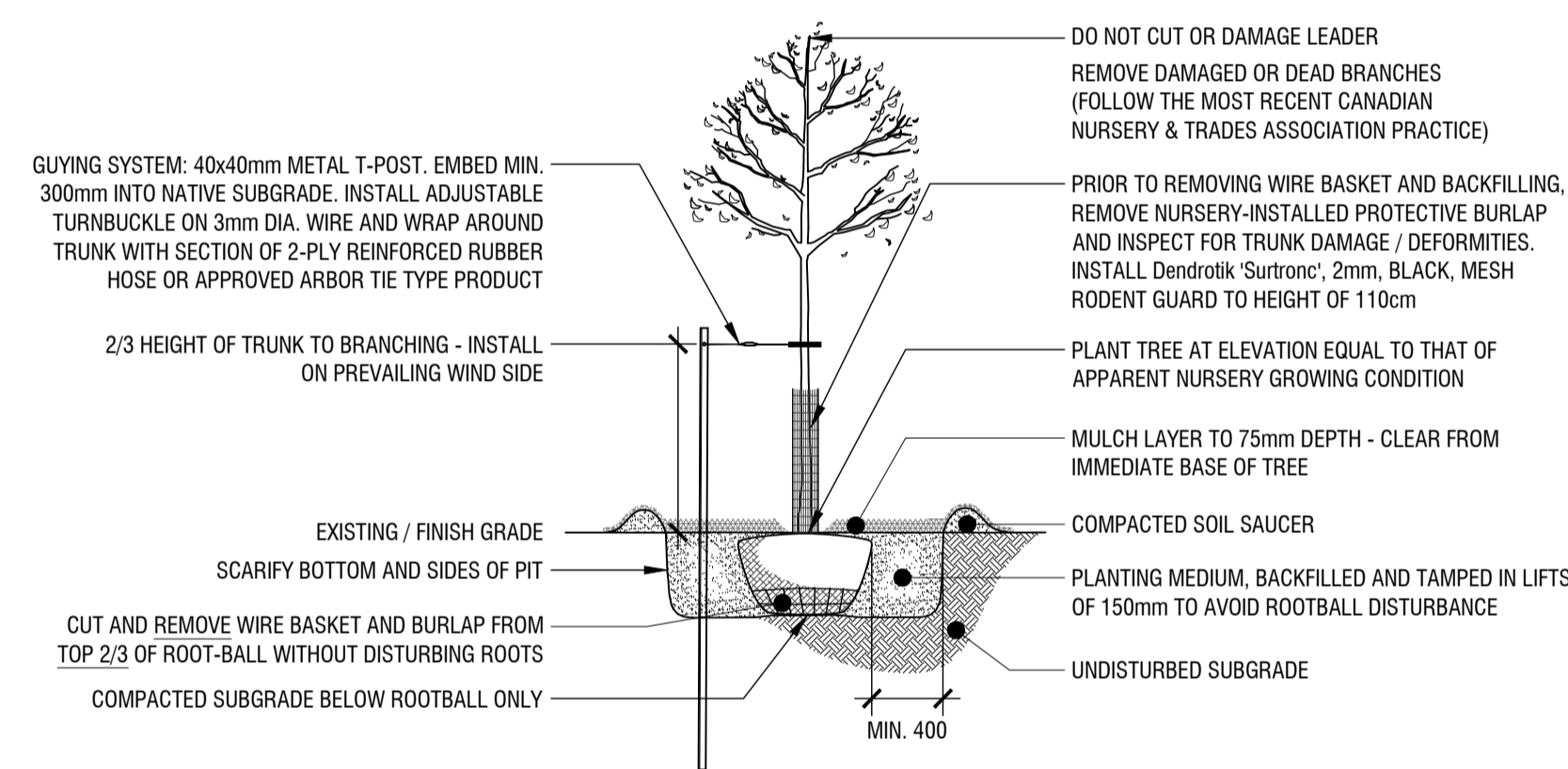
NOTE:
150mm MAXIMUM DEPTH OF STANDING WATER IN SWALES

1 BIOSWALE DETAIL
L4 n.t.s.

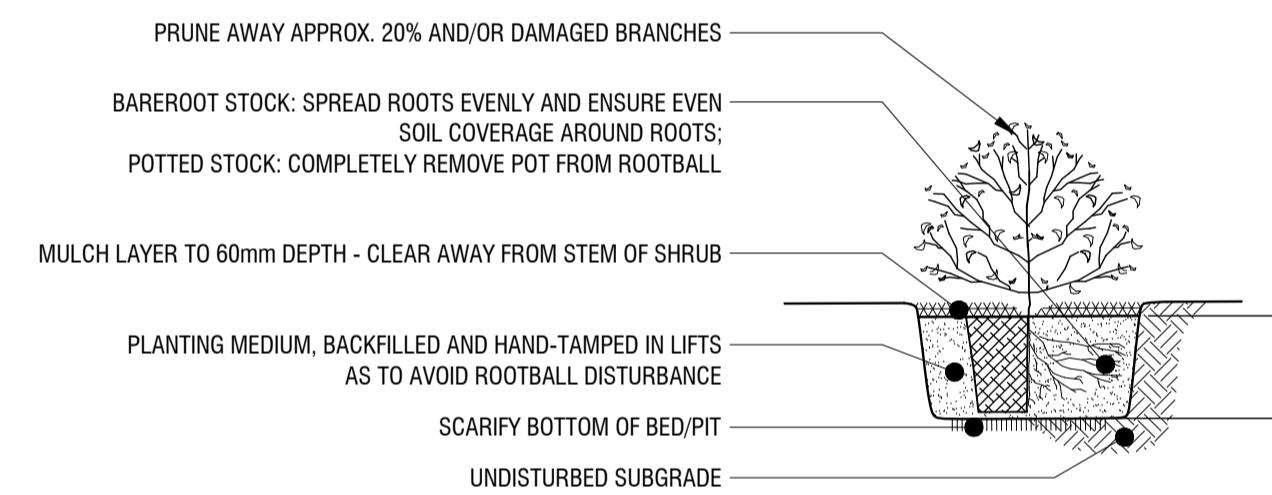


NOTE:
150mm MAXIMUM DEPTH OF STANDING WATER IN BIOFILTER

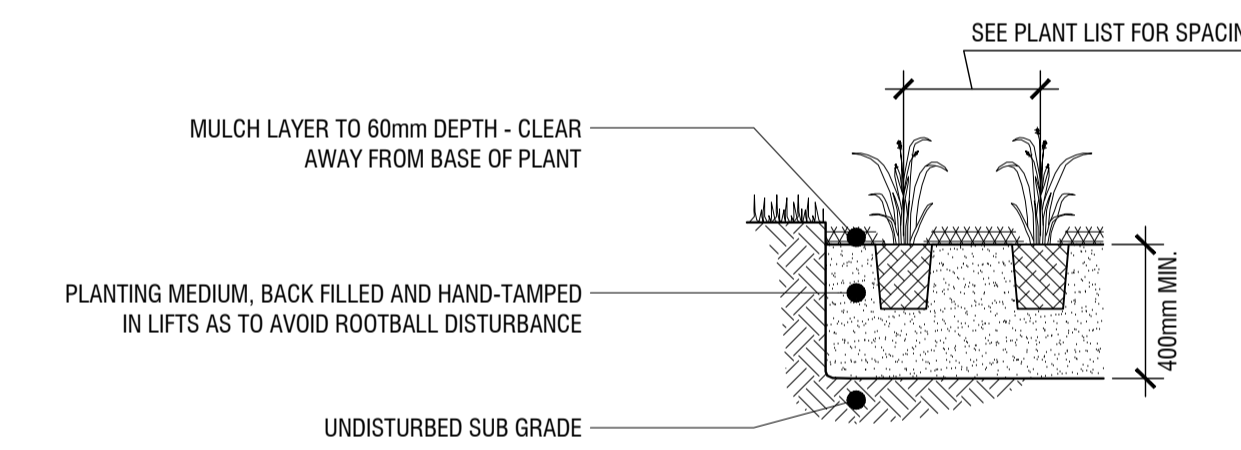
2 TREED BIOFILTER MEDIAN
L4 n.t.s.



3 TREE PLANTING DETAIL
L4 n.t.s.



4 SHRUB PLANTING DETAIL
L4 n.t.s.



5 PERENNIAL PLANTING DETAIL
L4 n.t.s.

PLOT INFORMATION: DWG NAME: P:\PROJECTS\Anthem\Carlingwood Parking Structure\Demolition\07 Drawing\Carlingwood Mall SHEET Details.dwg PLOT DATE: 2026-03-09 12:28:23 PM SHEET SIZE: ISO (A1) (841.00 x 594.00) MM PLOTTED BY: Sydney Turcotte LAST SAVED BY: anacade

NOT FOR CONSTRUCTION		
01	yyyy/mm/dd
00	Issue for site plan application	2026/03/09
rev'n	description / la description	yyyy/mm/dd

FOTENN Planning + Design
420 O'Connor Street
Ottawa, ON, CANADA K2P 1W4
613.730.5709
fotenn.com

north / le nord stamp / le cachet

project / projet
**CARLINGWOOD MALL
NORTH PARKING, STRUCTURE
DEMOLITION & REDESIGN**

drawing / dessin

DETAILS

designed / conçu ST / DF	drawn / dessiné ST	reviewed / examiné DF
date SEPT 2025	project number / No. du projet X ##-##	

drawing number / No. du dessin
L4