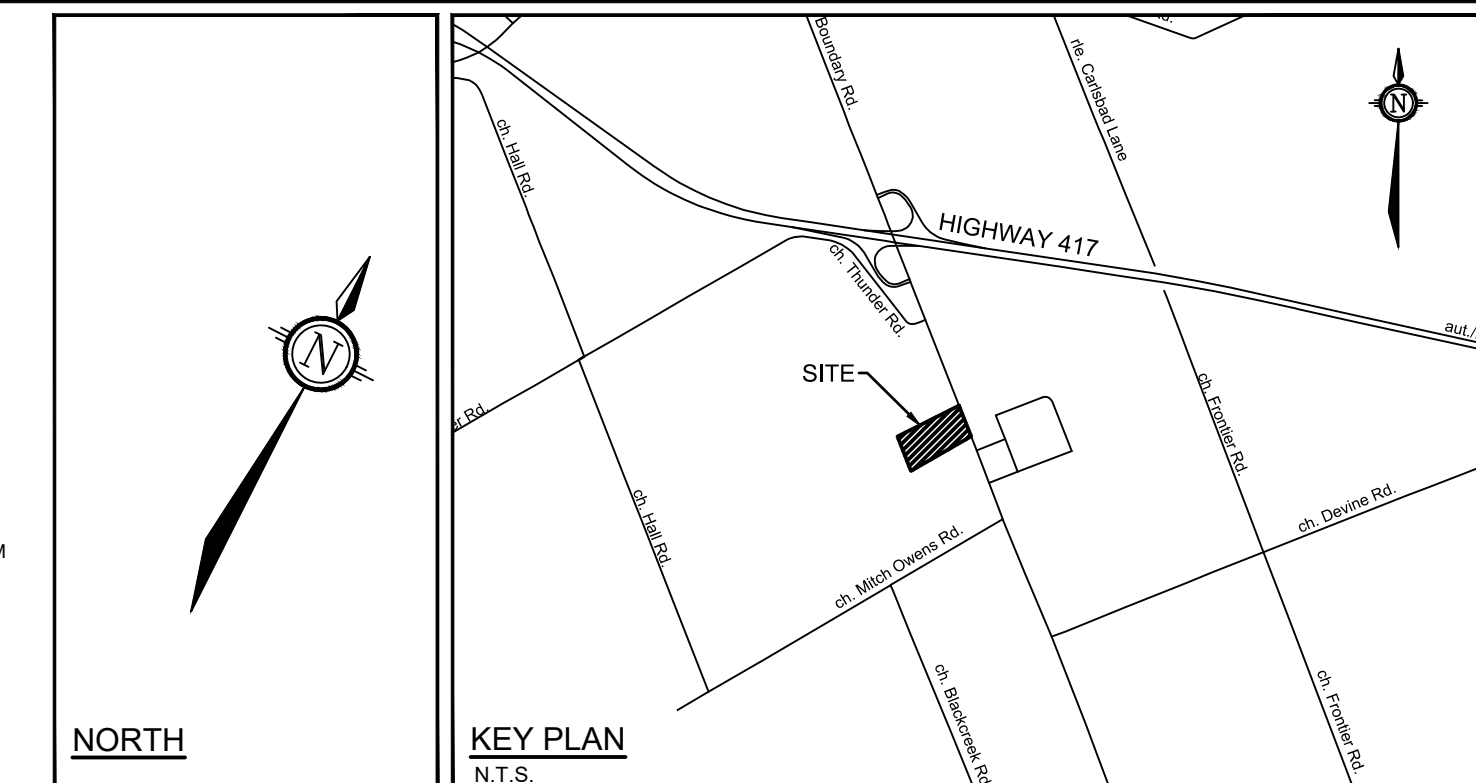
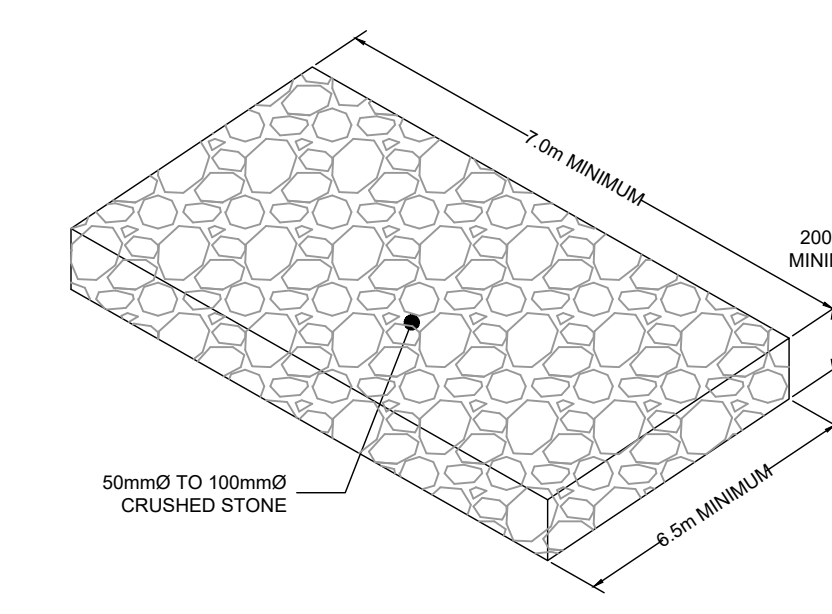


**EROSION AND SEDIMENT CONTROL NOTES :**

1. THE CONTRACTOR SHALL IMPLEMENT BEST MANAGEMENT PRACTICES DURING CONSTRUCTION ACTIVITIES TO PROTECT THE STORM DRAINAGE SYSTEM AND THE DOWNSTREAM RECEIVING WATERCOURSE(S). THIS INCLUDES LIMITING THE AMOUNT OF EXPOSED SOIL, USING FILTER BAGS UNDER THE GRATES OF CATCH-BASINS AND MANHOLES AND INSTALLING SILT FENCES AND OTHER EFFECTIVE SEDIMENT TRAPS.
2. ALL EROSION AND SEDIMENT CONTROLS ARE TO BE INSTALLED TO THE SATISFACTION OF THE ENGINEER AND THE CITY OF OTTAWA. THEY ARE TO BE APPROPRIATE TO THE SITE CONDITIONS, PRIOR TO UNDERTAKING ANY SITE ALTERATIONS (FILLING, GRADING, REMOVAL OF VEGETATION, ETC.) AND DURING ALL PHASES OF SITE PREPARATION AND CONSTRUCTION. THESE PRACTICES ARE TO BE IMPLEMENTED IN ACCORDANCE WITH THE CURRENT BEST MANAGEMENT PRACTICES FOR EROSION AND SEDIMENT CONTROL, AND SHOULD INCLUDE AS A MINIMUM THOSE MEASURES INDICATED ON THE PLAN.
3. TO PREVENT SURFACE EROSION FROM ENTERING ANY DITCH OR STORM SEWER SYSTEM DURING CONSTRUCTION, FILTER BAGS WILL BE PLACED UNDER GRATES OF CATCH-BASINS AND STRUCTURES. A LIGHT DUTY SILT FENCE BARRIER WILL ALSO BE INSTALLED AROUND THE CONSTRUCTION AREA. THESE CONTROL MEASURES ARE TO REMAIN IN PLACE UNTIL VEGETATION HAS BEEN ESTABLISHED AND CONSTRUCTION IS COMPLETE.
4. THE SEDIMENT CONTROL MEASURES SHALL ONLY BE REMOVED WHEN, IN THE OPINION OF THE ENGINEER, THE MEASURES ARE NO LONGER REQUIRED. NO CONTROL MEASURES MAY BE PERMANENTLY REMOVED WITHOUT PRIOR AUTHORIZATION FROM THE ENGINEER.
5. THE CONTRACTOR SHALL IMMEDIATELY REPORT TO THE ENGINEER ANY ACCIDENTAL DISCHARGES OF SEDIMENT MATERIAL INTO ANY DITCH OR STORM SEWER SYSTEM. APPROPRIATE RESPONSE MEASURES, INCLUDING ANY REPAIRS TO EXISTING CONTROL MEASURES OR THE IMPLEMENTATION OF ADDITIONAL CONTROL MEASURES, SHALL BE CARRIED OUT BY THE CONTRACTOR WITHOUT DELAY.
6. THE CONTRACTOR ACKNOWLEDGES THAT FAILURE TO IMPLEMENT EROSION AND SEDIMENT CONTROL MEASURES MAY BE SUBJECT TO PENALTIES IMPOSED BY ANY APPLICABLE REGULATORY AGENCY.
7. ROADWAYS ARE TO BE SWEEP AS REQUIRED OR AS DIRECTED BY THE ENGINEER AND/OR MUNICIPALITY.
8. THE CONTRACTOR SHALL ENSURE PROPER DUST CONTROL IS PROVIDED WITH THE APPLICATION OF WATER (AND IF REQUIRED, CALCIUM CHLORIDE) DURING DRY PERIODS.
9. THE PROPOSED PERIMETER SWALE IS TO BE TREATED WITH TOPSOIL, HYDROSEED AND MULCH AS SOON AS IS PRACTICAL AFTER CONSTRUCTION OF THE SWALE.
10. THE EROSION SEDIMENT CONTROL PLAN IS TO BE CONSIDERED A "LIVING DOCUMENT" WHICH MAY BE MODIFIED IN THE EVENT THAT THE CONTROL MEASURES ARE INSUFFICIENT.
11. PROVIDE REGULAR MAINTENANCE TO THE EROSION AND SEDIMENT CONTROL MEASURES DURING CONSTRUCTION. CONTRACTOR SHALL BE RESPONSIBLE FOR ENSURING THAT THE EROSION AND SEDIMENT CONTROL MEASURES ARE MAINTAINED AND WILL MONITOR THE WATER CLARITY DOWNSTREAM OF THE WORK SITE THROUGHOUT THE DAY AND DURING RAIN EVENTS. WATER QUALITY IS TO MEET THE CANADIAN WATER QUALITY GUIDELINES FOR THE PROTECTION OF AQUATIC LIFE. MONITORING FOR VISIBLE PLUMES OUTSIDE OF THE WORK AREA IS TO BE UNDERTAKEN.
12. SUSPEND ACTIVITIES THAT CAUSE MUDDY ENVIRONMENTS DURING PERIODS OF HEAVY RAINS.
13. ANY STOCKPILES OF SOIL OR FILL MATERIAL WILL BE STORED AS FAR AS POSSIBLE FROM THE FISH HABITAT OR CHANNELS LEADING TO FISH HABITAT (MINIMUM 30 M).
14. THE EROSION CONTROL MEASURES WILL NOT BE REMOVED UNTIL THE BANKS ARE STABILIZED (I.E. <20% EXPOSED SOIL).
15. WHERE BANKS/RIPARIAN AREA (AREA WITHIN 30 M OF CHANNEL) HAVE BEEN STABILIZED BY SEEDING AND/OR PLANTING, MONITOR THE REVEGETATION TO ENSURE THAT THE VEGETATION BECOMES FULLY ESTABLISHED (AT LEAST 80% COVER REQUIRED).
16. WHERE POSSIBLE, LIMIT CLEARING OF VEGETATION TO TRIMMING AND LEAVE THE STUMP AND LOWER 60 CM OF THE TREE TRUNK IN PLACE (FOR SHORELINE STABILIZATION).
17. ONCE WORK IS COMPLETED, STABILIZE USING NATIVE VEGETATION. WHERE POSSIBLE, THIS SHOULD INCLUDE NATIVE TREES AND SHRUBS AS PER THE LANDSCAPING PLAN (TO BE DEVELOPED AT DETAILED DESIGN).

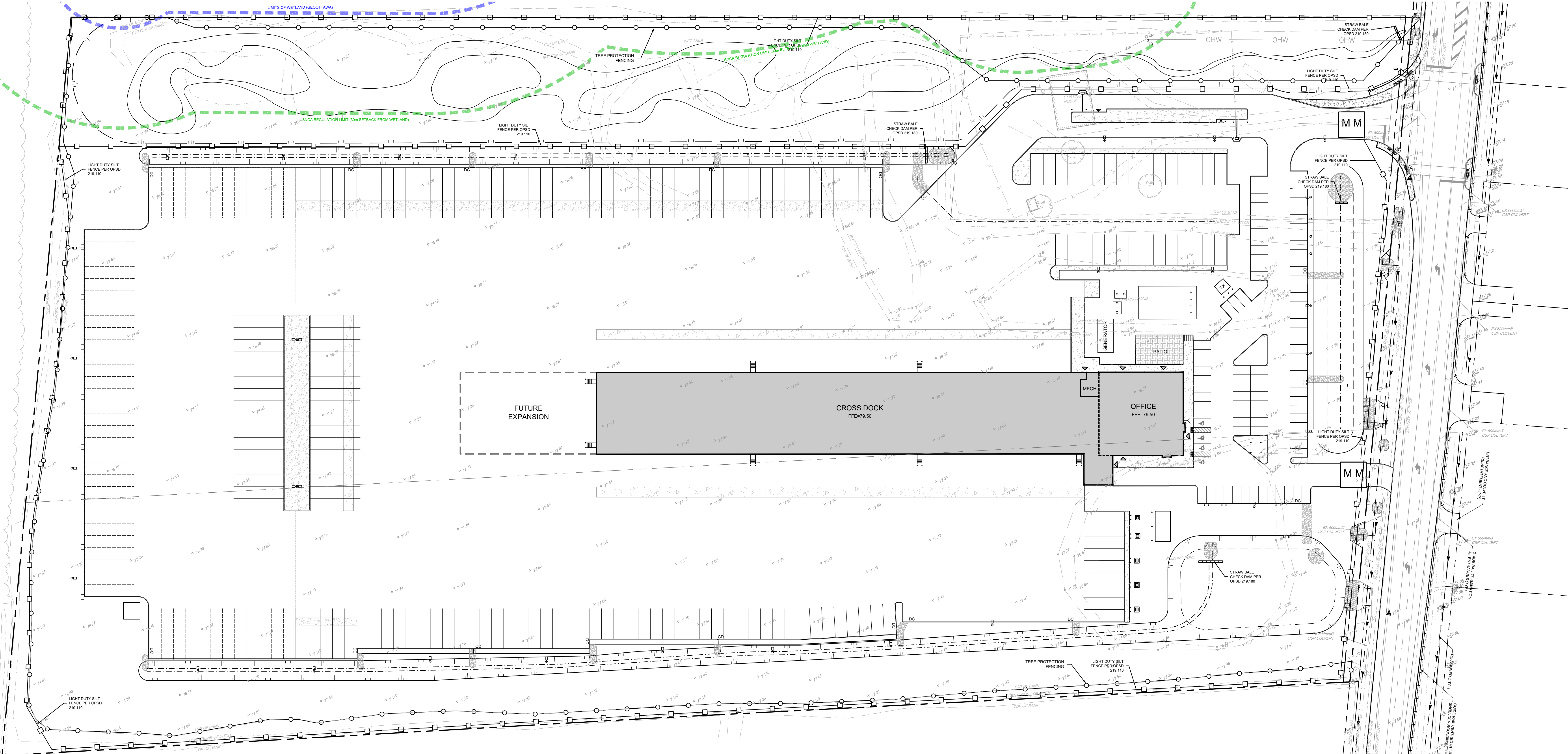
**ESC CONTROL MEASURES**

|                    | ESC Measure  | Symbol                             | OPSD No.   | During Construction         |                           |                       | After Construction                    |                        |
|--------------------|--|------------------------------------|------------|-----------------------------|---------------------------|-----------------------|---------------------------------------|------------------------|
|                    |  |                                    |            | Installation Responsibility | Inspection Responsibility | Inspection Frequency  | Inspection/Maintenance Responsibility | Removal Responsibility |
| Temporary Measures | Silt Fence   |                                    | 219.110    | Developer's Contractor      | Developer's Contractor    | Weekly (as a minimum) | Developer                             | Developer's Contractor |
|                    | Mud Mat  |                                    | See Detail | Developer's Contractor      | Developer's Contractor    | Weekly (as a minimum) | N/A                                   | Developer's Contractor |
|                    | Straw Bale Check Dam                                       |                                    | 219.180    | Developer's Contractor      | Developer's Contractor    | Weekly (as a minimum) | N/A                                   | N/A                    |
|                    | Sediment Basin (for flows being pumped out of excavations) | Location as Required by Contractor | ---        | Developer's Contractor      | Developer's Contractor    | After Every Rainstorm | N/A                                   | Developer's Contractor |
| Permanent Measures | Vegetated Swales   | N/A                                | N/A        | Developer's Contractor      | Developer's Contractor    | Weekly (as a minimum) | Developer                             | N/A                    |



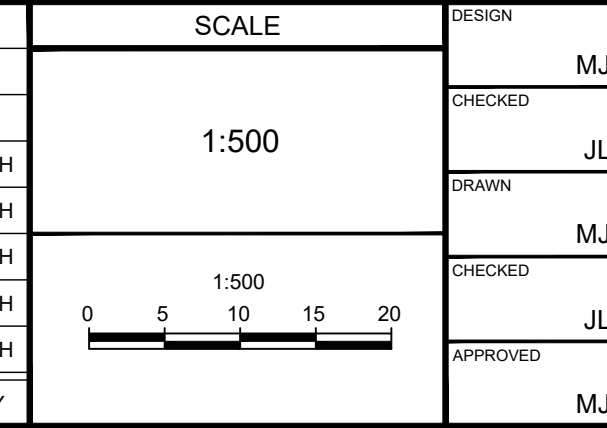
**LEGEND**

|  |  |  |                                      |
|--|--|--|--------------------------------------|
|  | PROPERTY LINE  |  | LIGHT DUTY SILT FENCE (OPSD 219.110) |
|  | PROPOSED SWALE                                       |  | PROPOSED STORM MANHOLE               |
|  | TERRACING 1:1 SLOPE MAX (UNLESS OTHERWISE INDICATED) |  | PROPOSED BUILDING ENTRANCE           |
|  | PROPOSED MUD MAT                                     |  | STRAWBALE CHECK DAM (OPSD 219.180)   |
|  |  |  | RIP-RAP                              |



NOTE:  
THE POSITION OF ALL POLE LINES, CONDUITS, WATERMANS, SEWERS AND OTHER UNDERGROUND AND OVERGROUND UTILITIES AND STRUCTURES IS NOT NECESSARILY SHOWN ON THE CONTRACT DRAWINGS, AND WHERE SHOWN, THE ACCURACY OF THE POSITION OF SUCH UTILITIES AND STRUCTURES IS NOT GUARANTEED. BEFORE STARTING WORK, DETERMINE THE EXACT LOCATION OF ALL SUCH UTILITIES AND STRUCTURES AND ASSUME ALL LIABILITY FOR DAMAGE TO THEM.

| No. | REVISION                             | DATE        | BY  |
|-----|--------------------------------------|-------------|-----|
| 5.  | REVISED PER CITY COMMENTS            | FEB 20/2026 | MJH |
| 4.  | REVISED PER CITY AND SNCA COMMENTS   | NOV 14/2025 | MJH |
| 3.  | REVISED PER BUILDING PERMIT COMMENTS | APR 22/2025 | MJH |
| 2.  | ISSUED FOR BUILDING PERMIT           | OCT 24/2024 | MJH |
| 1.  | ISSUED FOR SPA                       | OCT 3/2024  | MJH |



FOR REVIEW ONLY

PROJEN: MJH  
CHECKED: JLS  
DRAWN: MJH  
CHECKED: JLS  
APPROVED: MJH

**NOVATECH**  
Engineers, Planners & Landscape Architects  
Suite 200, 240 Michael Copland Drive  
Ottawa, Ontario, Canada K2M 1P6  
Telephone: (613) 254-9643  
Facsimile: (613) 254-5867  
Website: www.novatech-eng.com

LOCATION  
CITY OF OTTAWA  
5110 BOUNDARY ROAD

DRAWING NAME  
**EROSION AND SEDIMENT CONTROL PLAN**

PROJECT NO.: 118168  
REV: REV # 5  
DRAWING NO.: 118168-ESC  
PLAN # 19296