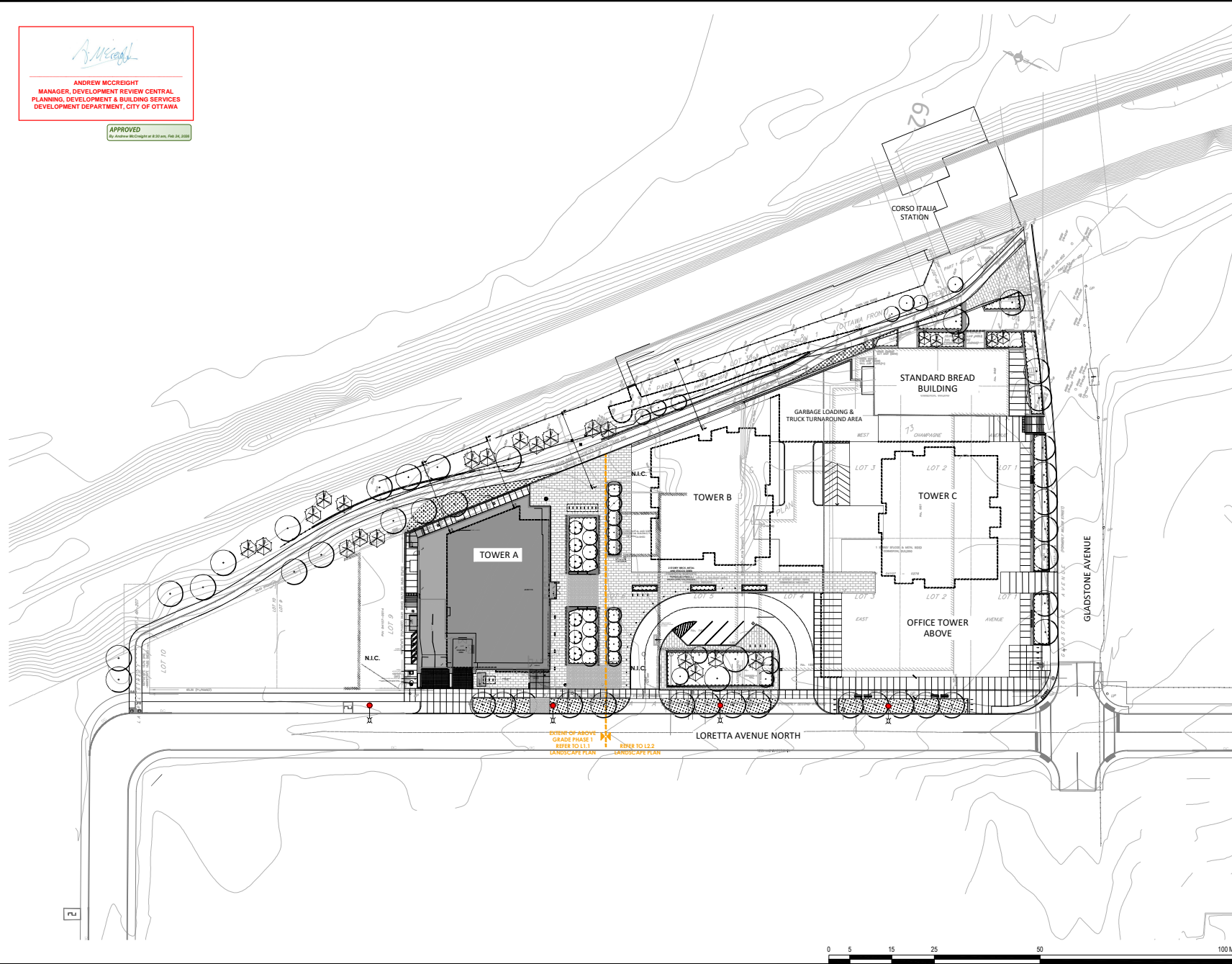


Andrew McCreight



ANDREW MCCREIGHT
MANAGER, DEVELOPMENT REVIEW CENTRAL
PLANNING, DEVELOPMENT & BUILDING SERVICES
DEVELOPMENT DEPARTMENT, CITY OF OTTAWA

APPROVED
City of Ottawa, City Engineer at 232 Ave. 232, 232



- GENERAL NOTES:
- All measurements in millimeters unless specified otherwise. Do not scale drawing. All drawings to be read in conjunction with written specifications.
 - Copyright reserved. This drawing is the exclusive property of CSW Landscape Architects Ltd. and shall not be used without the consent thereof.
 - This Drawing may not be used for construction until signed by the landscape architect. It is the responsibility of the contractor to:
 - check and verify all dimensions on site;
 - report all errors and/or omissions to the landscape architect;
 - comply with all pertinent codes and by-laws;
 - check and verify locations of all underground services with all local utilities prior to any digging;
 - Minimum soil volume required for trees:

13	RE-ISSUED FOR SPA	31 JAN 2025
12	RE-ISSUED FOR SPA	20 NOV 2024
11	RE-ISSUED FOR SPA	30 AUG 2024
10	RE-ISSUED FOR SPA	19 APR 2024
9	RE-ISSUED FOR SPA	21 AUG 2023
8	RE-ISSUED FOR SPA	22 FEB 2023
7	RE-ISSUED FOR SPA	15 SEP 2022
6	RE-ISSUED FOR SPA	1 MAR 2022
5	RE-ISSUED FOR SPA	17 DEC 2021
4	ISSUED FOR SPC	21 APR 2021
3	ISSUED FOR SPC	09 APR 2021
2	ISSUED FOR SPA / COORD.	17 OCT 2020
1	ISSUED FOR SPA / REZONING	08 AUG 2019
No.	Revision	Date

North:  Stamp: 

Landscape Architecture
Urban Design
Site Planning
Recreation and Park Planning
Project Management

CSW

319 McRae Avenue, Suite 502, Ottawa, Ontario, K1Z 0B9
Tel: (613) 729-4536

 CLV GROUP DEVELOPMENTS

 PBC GROUP

**LIGHTING AND TREE CONFLICTS
CSW MARKUP**

Project:
**951 Gladstone Avenue &
145 Loretta Avenue North**

OTTAWA, ONTARIO

Drawing:
**LANDSCAPE
SITE PLAN**

Scale: 1:400 Date: July 2019

Design By: CM Drawn By: AB

Project Number: 1987-01 Sheet Number: L10

Landscape Architecture - 2019/07/24 11:55:24 AM