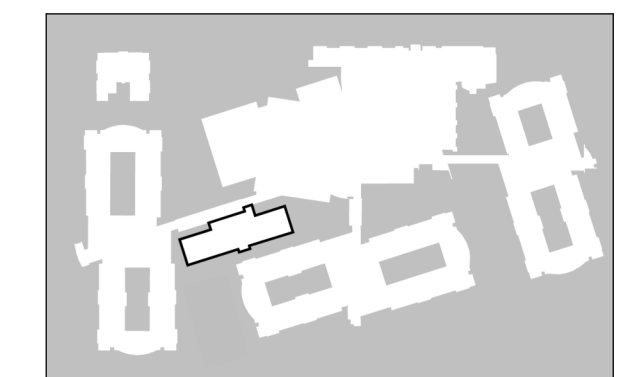


GENERAL NOTES

1. These architectural documents are the exclusive property of NEUF ARCHITECTS INC. and may not be used, copied, or reproduced without prior written authorization.
2. All dimensions shown on these documents must be verified by the contractor before the commencement of work.
3. The architect must be notified of any errors, omissions, or discrepancies between these documents and those of other professionals.
4. Dimensions shown on these documents must be read, not scaled.



STRUCTURAL
ENTUITIVE
 200 University Avenue, 7th Floor Toronto, ON M5H 3C6
 T 416.477.9532 www.entuitive.com

MECHANICAL AND ELECTRICAL
SMITH + ANDERSEN
 1000 Carling Avenue, Suite 100 Ottawa, ON K1Z 1G3
 T 613.230.1188 smithandersen.com

LANDSCAPE ARCHITECT
XXX RESERVED
 XXX
 T www.***.***

CIVIL
CIMA+
 110-240 Catherine Street, Ottawa, ON K2P 2G8
 T 613.895.2452 www.cima.ca/en/

URBAN PLANNER
FOTENN PLANNING + DESIGN
 223 McLeod St, Ottawa, ON K2P 0Z8
 T 613.730.0700 fotenn.com

CLIENT REPRESENTATIVE
KADUS
 310 Ottawa Pk Line 110, Ottawa, ON K1R 6N8
 T 613.820.5600 kadusgroup.com

ARCHITECT
NEUF architect(s)
 10 Riverside Square #200, Ottawa, ON K1N 5W9
 T 613.234.2274 www.neuf.ca

SEAL



PROJECT
PERLEY HEALTH EXPANSION
 LOCATION: 1750 Russell Road Ottawa, ON K1G 5Z6
 PROJECT No: 13330

| NO | REVISION | DATE (yyyy-mm-dd) |
|----|----------------------------------|-------------------|
| A | ISSUED FOR SITE PLAN APPLICATION | 2026-02-09 |

| NO | REVISION | DATE (yyyy-mm-dd) | SCALE |
|----|----------|-------------------|---------|
| GG | | 2025-03-21 | 1 : 100 |

DRAWING TITLE
EXTERIOR ELEVATIONS SPA

REVISION **DRAWING NUMBER**
A A410



GATNEAU BUILDING RESIDENCE WEST LINK LTC UNITS HOME HUB LTC UNITS CENTER BLOCK
LTC - ELEVATION SOUTH SPA
 1:100

| MATERIALS LEGEND | |
|------------------|---|
| MP-01 | PREFABRICATED METAL PANELS - GRAY |
| MP-02 | PREFABRICATED METAL PANELS - BROWN |
| MP-03 | ALUMINUM PANEL FOR SPANDREL PANEL IN CURTAIN WALL |

| MATERIALS LEGEND CONT'D | |
|-------------------------|----------------------------|
| MP-01 | CAPPING/FLASHING - PARAPET |

| MATERIALS LEGEND CONT'D | |
|-------------------------|---|
| BR-01 | BRICK FINISH - COLOUR: BROWN |
| BR-02 | BRICK FINISH - COLOUR: VARIES (BROWN AND LIGHT BROWN) |
| BR-03 | BRICK FINISH - COLOUR: BROWN PATTERNED |
| PC-S | PRECAST WINDOW SILL |

| MATERIALS LEGEND CONT'D | |
|-------------------------|-----------------------|
| GL-01 | GLASS CLEAR - TYPICAL |
| GL-02 | GLASS CLEAR - SAFETY |

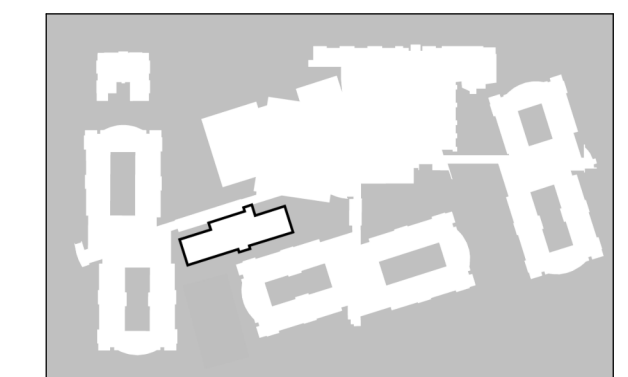
| MATERIALS LEGEND CONT'D | |
|-------------------------|------------------------------|
| SP-03 | SPANDREL - (DARK BROWN GREY) |

| BUILDING ELEMENTS LEGEND | |
|--------------------------|-------------------------------|
| DG-SW | EXTERIOR AUTOMATIC GLASS DOOR |
| DG-SG | EXTERIOR GLASS SWING DOOR |
| DG-S | EXTERIOR METAL SOLID DOOR |
| ML | MECHANICAL LOUVER |
| MTL-RL | METAL RAILING |
| MTL-LR | ROOF ACCESS LADDER |

Autodesk Docs://13330_PERLEY HEALTH ALT_R24PPS/E_13330_ARC_INT_R24.rvt

GENERAL NOTES

1. These architectural documents are the exclusive property of NEUF ARCHITECTS INC. and may not be used, copied, or reproduced without prior written authorization.
2. All dimensions shown on these documents must be verified by the contractor before the commencement of work.
3. The architect must be notified of any errors, omissions, or discrepancies between these documents and those of other professionals.
4. Dimensions shown on these documents must be read, not scaled.



STRUCTURAL
ENTUITIVE
 200 University Avenue, 7th Floor Toronto, ON M5H 3C6
 T 416.477.9532 www.entuitive.com

MECHANICAL AND ELECTRICAL
SMITH + ANDERSEN
 1000 Carling Avenue, Suite 100 Ottawa, ON K1Z 1G3
 T 613.230.1188 smithandanderson.com

LANDSCAPE ARCHITECT
XXX RESERVED
 XXX
 T www.

CIVIL
CIMA+
 110-240 Catherine Street, Ottawa, ON K2P 2G8
 T 613.890.2462 www.cima.ca/en/

URBAN PLANNER
FOTENN PLANNING + DESIGN
 223 McLeod St. Ottawa, ON K2P 0Z8
 T 613.730.0700 fotenn.com

CLIENT REPRESENTATIVE
KADUS
 310 Ottawa Pk Unit 110, Ottawa, ON K1R 6R8
 T 613.820.5600 kadusgroup.com

ARCHITECT
NEUF architect(e)s
 10 Rideau St Suite 400, Ottawa, ON K1N 5W8
 T 613.234.2274 www.neuf.ca

SEAL



LTC - ELEVATION NORTH SPA
 1:100



PROJECT
PERLEY HEALTH EXPANSION

LOCATION PROJECT No.
1750 Russell Road 13330
Ottawa, ON K1G 5Z6

NO REVISION DATE (yyyymm-dd)
 A ISSUED FOR SITE PLAN APPLICATION 2026-02-09

DRAWN BY: GG CHECKED BY: LK
 DATE (yyyymm-dd) SCALE
 12/15/25 1:100
 DRAWING TITLE

EXTERIOR ELEVATIONS SPA

REVISION DRAWING NUMBER
A A411

| MATERIALS LEGEND | |
|------------------|---|
| MP-01 | PREFABRICATED METAL PANELS - GRAY |
| MP-02 | PREFABRICATED METAL PANELS - BROWN |
| MP-03 | ALUMINUM PANEL FOR SPANDREL PANEL IN CURTAIN WALL |

| MATERIALS LEGEND CONT'D | |
|-------------------------|----------------------------|
| MF-01 | CAPPING/FLASHING - PARAPET |

| MATERIALS LEGEND CONT'D | |
|-------------------------|---|
| BR-01 | BRICK FINISH - COLOUR: BROWN |
| BR-02 | BRICK FINISH - COLOUR: VARIES (BROWN AND LIGHT BROWN) |
| BR-03 | BRICK FINISH - COLOUR: BROWN PATTERNED |
| PC-S | PRECAST WINDOW SILL |

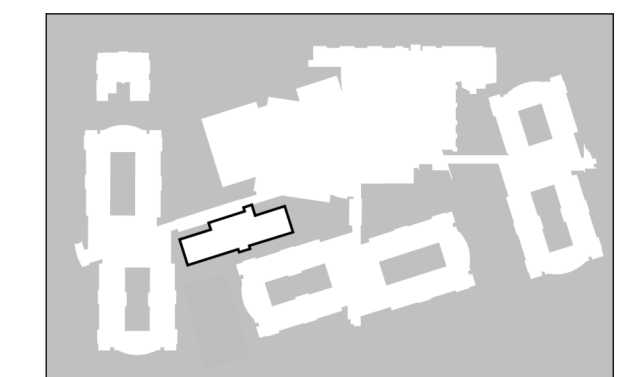
| MATERIALS LEGEND CONT'D | |
|-------------------------|-----------------------|
| GL-01 | GLASS CLEAR - TYPICAL |
| GL-02 | GLASS CLEAR - SAFETY |

| MATERIALS LEGEND CONT'D | |
|-------------------------|------------------------------|
| SP-03 | SPANDREL - (DARK BROWN GREY) |

| BUILDING ELEMENTS LEGEND | |
|--------------------------|-------------------------------|
| DG-SW | EXTERIOR AUTOMATIC GLASS DOOR |
| DG-SG | EXTERIOR GLASS SWING DOOR |
| DG-S | EXTERIOR METAL SOLID DOOR |
| ML | MECHANICAL LOUVER |
| MTL-RL | METAL RAILING |
| MTL-LR | ROOF ACCESS LADDER |

Autodesk Docs://13330_PERLEY HEALTH ALT_R24PPS/E_13330_ARC_INT_R24.rvt

- GENERAL NOTES**
1. These architectural documents are the exclusive property of NEUF ARCHITECTS INC. and may not be used, copied, or reproduced without prior written authorization.
 2. All dimensions shown on these documents must be verified by the contractor before the commencement of work.
 3. The architect must be notified of any errors, omissions, or discrepancies between these documents and those of other professionals.
 4. Dimensions shown on these documents must be read, not scaled.



STRUCTURAL
ENTUITIVE
 200 University Avenue, 7th Floor Toronto, ON M5H 3C6
 T 416.477.9532 www.entuitive.com

MECHANICAL AND ELECTRICAL
SMITH + ANDERSEN
 1000 Carling Avenue, Suite 100 Ottawa, ON K1Z 1G3
 T 613.230.1188 smithandandersen.com

LANDSCAPE ARCHITECT
XXX RESERVED
 XXX
 T www.

CIVIL
CIMA+
 110-240 Catherine Street, Ottawa, ON K2P 2G8
 T 613.893.2452 www.cima.ca/en/

URBAN PLANNER
FOTENN PLANNING + DESIGN
 223 McLeod St, Ottawa, ON K2P 0Z8
 T 613.730.0700 fotenn.com

CLIENT REPRESENTATIVE
KADUS
 310 Sheela Pk Unit 110, Ottawa, ON K1R 6R8
 T 613.820.5600 kadusgroup.com

ARCHITECT
NEUF architect(e)s
 10 Riverside Square #200, Ottawa, ON K1N 5W9
 T 613.234.2274 www.neuf.ca

BEAL



PROJECT
PERLEY HEALTH EXPANSION

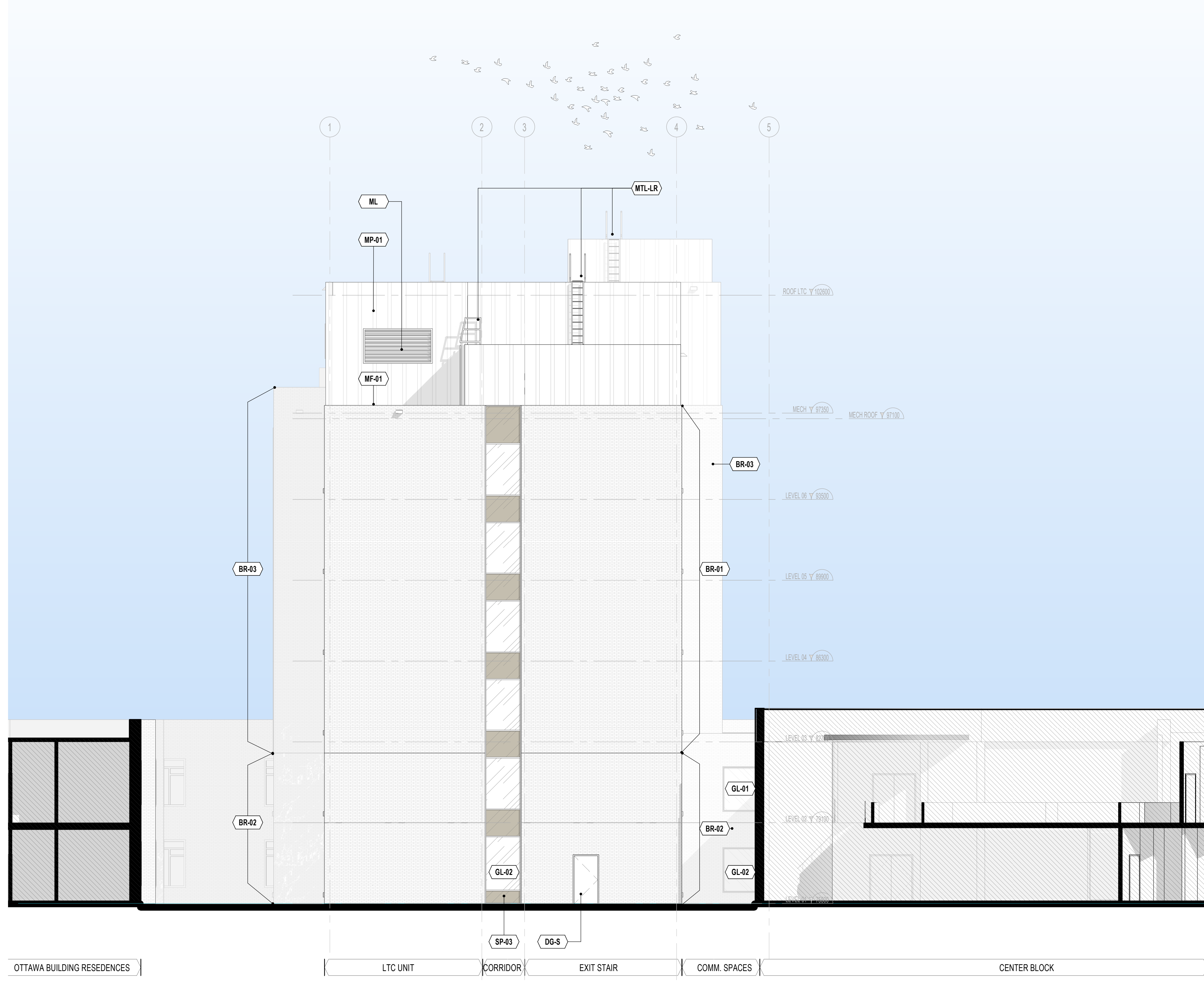
LOCATION PROJECT No.
1750 Russell Road 13330
Ottawa, ON K1G 5Z6

| NO | REVISION | DATE (yyyymm-dd) |
|----|----------------------------------|------------------|
| A | ISSUED FOR SITE PLAN APPLICATION | 2026-02-09 |

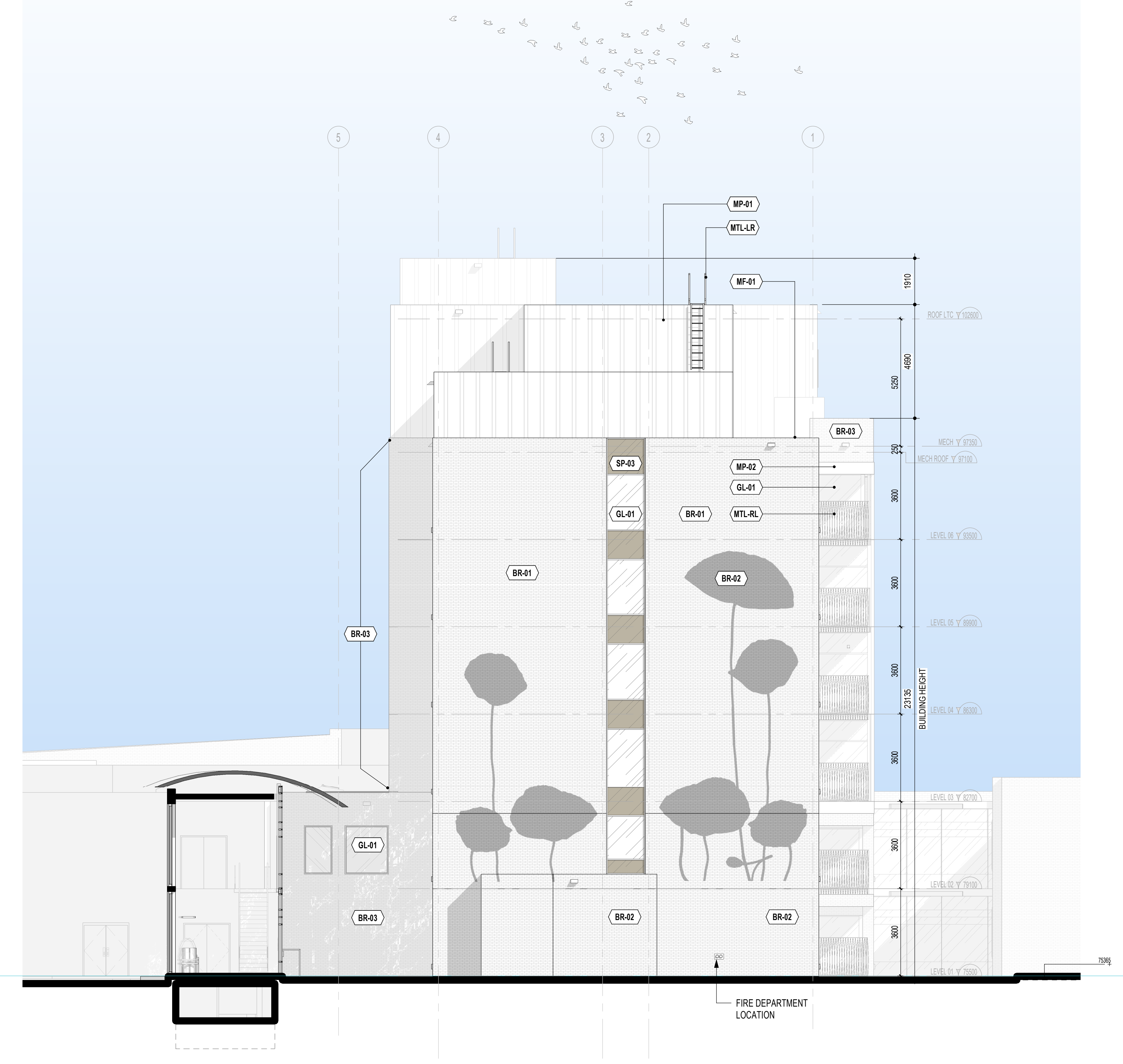
DRAWN BY: GG **CHECKED BY:** IK
DATE (yyyymm-dd): 12/15/25 **SCALE:** 1 : 100
DRAWING TITLE:

EXTERIOR ELEVATIONS SPA

REVISION **DRAWING NUMBER**
A A412



LTC - ELEVATION EAST SPA
 1:100 A412



LTC - ELEVATION WEST SPA
 1:100 A412

MATERIALS LEGEND

| | | |
|-------|---|--|
| MP-01 | PREFABRICATED METAL PANELS - GRAY | |
| MP-02 | PREFABRICATED METAL PANELS - BROWN | |
| MP-03 | ALUMINUM PANEL FOR SPANDREL PANEL IN CURTAIN WALL | |

MATERIALS LEGEND CONT'D

| | | |
|-------|----------------------------|--|
| MF-01 | CAPPING/FLASHING - PARAPET | |
|-------|----------------------------|--|

MATERIALS LEGEND CONT'D

| | | |
|-------|---|--|
| BR-01 | BRICK FINISH - COLOUR: BROWN | |
| BR-02 | BRICK FINISH - COLOUR: VARIES (BROWN AND LIGHT BROWN) | |
| BR-03 | BRICK FINISH - COLOUR: BROWN PATTERNED | |
| PC-S | PRECAST WINDOW SILL | |

MATERIALS LEGEND CONT'D

| | | |
|-------|-----------------------|--|
| GL-01 | GLASS CLEAR - TYPICAL | |
| GL-02 | GLASS CLEAR - SAFETY | |

MATERIALS LEGEND CONT'D

| | | |
|-------|------------------------------|--|
| SP-03 | SPANDREL - (DARK BROWN GREY) | |
|-------|------------------------------|--|

BUILDING ELEMENTS LEGEND

| | |
|--------|-------------------------------|
| DG-SW | EXTERIOR AUTOMATIC GLASS DOOR |
| DG-SG | EXTERIOR GLASS SWING DOOR |
| DG-S | EXTERIOR METAL SOLID DOOR |
| ML | MECHANICAL LOUVER |
| MTL-RL | METAL RAILING |
| MTL-LR | ROOF ACCESS LADDER |

Autodesk Docs://13330_PERLEY HEALTH ALT_R24PPRS/E_13330_ARC_INT_R24.rvt

