

1	ISSUED FOR SPA	02 FEB 2026
No.	Revision	Date

North:

Stamp:

CSW Landscape Architecture
 Urban Design
 Site Planning
 Recreation and Park Planning
 Project Management

319 McRae Avenue, Suite 502, Ottawa, Ontario, K1Z 0B9
 Tel: (613) 729-4536

- All measurements in millimeters unless specified otherwise. Do not scale drawing. All drawings to be read in conjunction with written specifications.
- Copyright reserved. This drawing is the exclusive property of CSW Landscape Architects Ltd. and shall not be used without the consent thereof.
- This Drawing may not be used for construction until signed by the landscape architect. It is the responsibility of the contractor to:
 - check and verify all dimensions on site;
 - report all errors and/or omissions to the landscape architect;
 - comply with all pertinent codes and by-laws;
 - check and verify locations of all underground services with all local utilities prior to any digging.

Project:
CHOICE REIT 4175 STRANDHERD RETAIL

4175 STRANDHERD DRIVE
 OTTAWA, ON

Drawing:
LANDSCAPE PLAN

Scale:	Date:
1:500	05 NOV 2025
Design By:	Drawn By:
KK	KK
Project Number:	Sheet Number:
2188-01	L 1.1

LEGEND

- TREE TO BE REMOVED
- EXISTING TREE TO REMAIN
- LARGE DECIDUOUS TREE
- MEDIUM/SMALL DECIDUOUS TREE
- CONIFEROUS TREE
- TOPSOIL & SOD
- SHRUB/PERENNIAL PLANTING
- CONCRETE PAVING
- UNIT PAVING
- GRAVEL
- STACKED STONE WALL
- PLANTER POTS
- PATIO TABLE
- DEPRESSURED CURB
- TWSI
- BIKE RACKS
- BENCHES WITH CONCRETE PAD
- TREE PROTECTION FENCE
- PROPERTY LINE

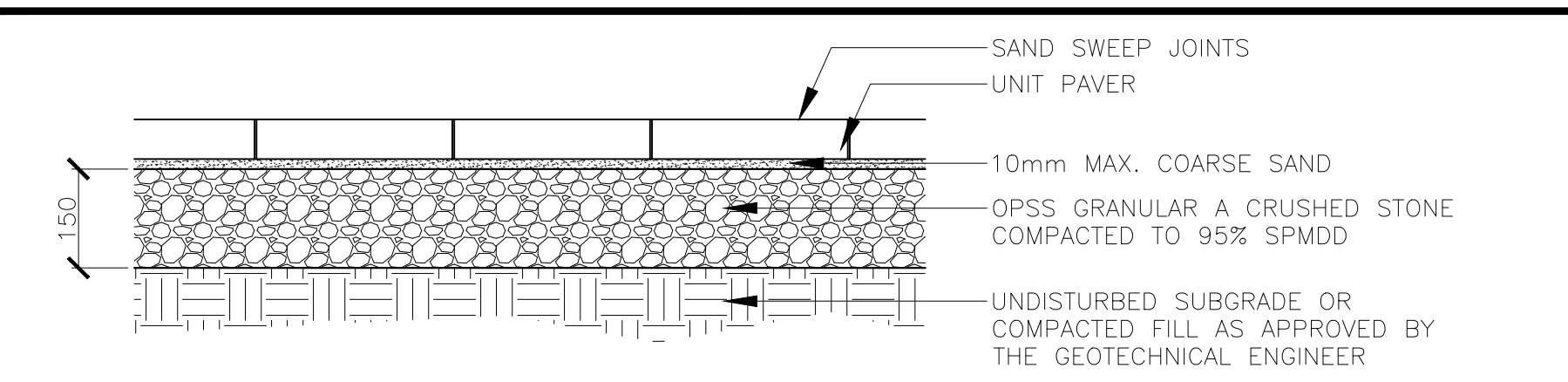
PLANT LIST

SYM.	BOTANICAL NAME	COMMON NAME	QTY.	SIZE	REMARKS	NATIVE	OWNERSHIP
LARGE DECIDUOUS TREES							
AF	<i>Acer x freemanii</i> 'Autumn Fantasy'	Autumn Fantasy Maple	5	70mm CAL.	B&B/W.B.	Cultivar	Private
AR	<i>Acer rubrum</i>	Red Maple	12	70mm CAL.	B&B/W.B.	Yes	Private
CO	<i>Celtis occidentalis</i>	Common Hackberry	9	70mm CAL.	B&B/W.B.	Yes	Private
GT	<i>Gleditsia triacanthos</i> 'Shademaster'	Honey Locust	13	70mm CAL.	B&B/W.B.	Cultivar	Private
QM	<i>Quercus rubra</i>	Red Oak	17	70mm CAL.	B&B/W.B. (Plant in Spring)	Yes	Private
UA	<i>Ulmus americana</i> 'Valley Forge'	American Elm	13	70mm CAL.	B&B/W.B.	Cultivar	Private
SMALL / MEDIUM DECIDUOUS TREES							
AL	<i>Amelanchier laevis</i>	Serviceberry	20	70mm Cal.	B&B/W.B.	Yes	Private
CONIFEROUS TREES							
PG	<i>Picea glauca</i>	White Spruce	5	1800mm HT.	B&B/W.B.	Yes	Private
TO	<i>Thuja occidentalis</i> 'Smaragd'	Emerald Cedar 'Smaragd'	3	1800mm HT.	B&B/W.B.	Yes	Private
SHRUBS							
Cs	<i>Cornus sericea</i>	Red Osier Dogwood	0	2 GAL. POT	1.5m O.C.	Yes	Private
Hk	<i>Hypericum kalmianum</i>	St. John's Wort	0	2 GAL. POT	0.5m O.C.	Yes	Private
Pm	<i>Juniperus sabina</i>	Savin Juniper	0	2 GAL. POT	0.75m O.C.	No	Private
Rg	<i>Rhus aromatica</i> 'Gro-low'	Fragrant Sumac	0	2 GAL. POT	1.2m O.C.	Cultivar	Private
GRASSES AND PERENNIALS							
ca	<i>Calamagrostis x acutiflora</i> 'Karl Foerster'	Feather Reed Grass	0	1 GAL. POT	0.6m O.C.	No	Private
ha	<i>Hemerocallis x 'Anzac'</i>	Anzac Red Daylily	0	1 GAL. POT	0.5m O.C.	No	Private
pe	<i>Perovskia atriplicifolia</i>	Russian Sage	0	1 GAL. POT	1.0m O.C.	No	Private
rf	<i>Rudbeckia fulgida sultivantii</i> 'Goldsturm'	Goldsturm Coneflower	0	1 GAL. POT	0.5m O.C.	Cultivar	Private
ss	<i>Sedum spectabile</i> 'Autumn Joy'	Autumn Joy Stonecrop	0	1 GAL. POT	0.5m O.C.	No	Private
sh	<i>Sporobolus heterolepis</i>	Prairie Dropseed	0	1 GAL. POT	0.45m O.C.	Yes	Private

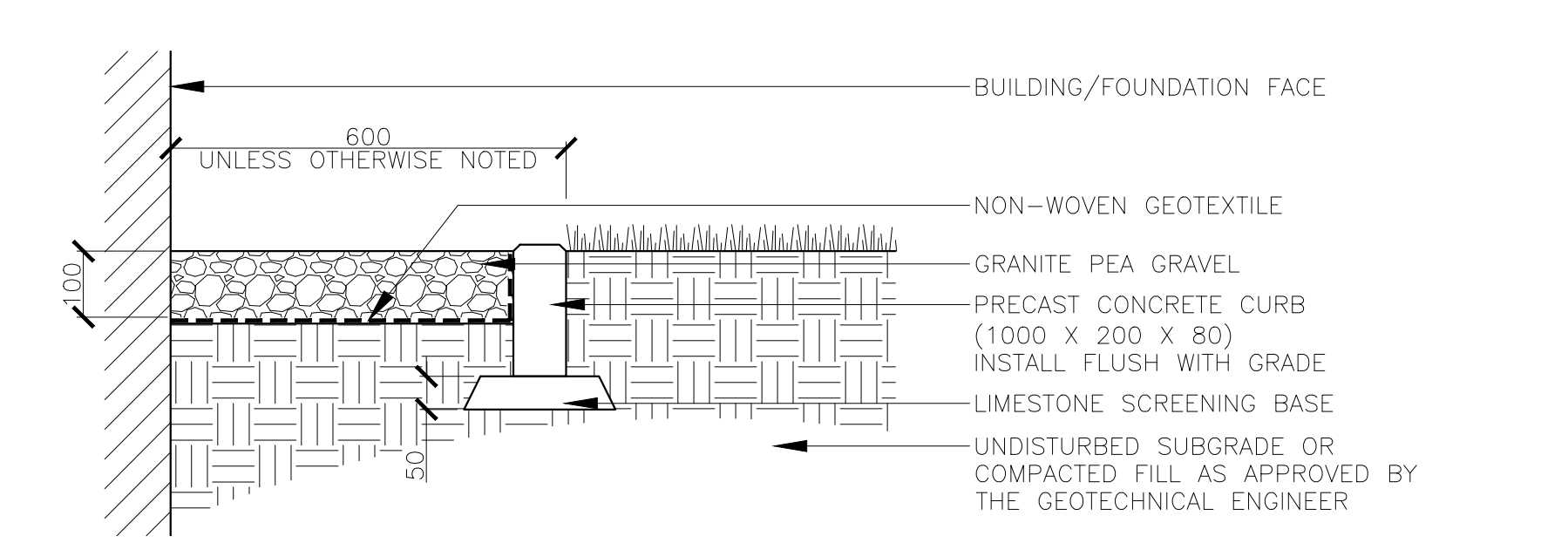
Total site area = 62,734 m²
 Projected 40 year tree canopy cover = 13,484 m²
 Site canopy cover = 21.5%

TREE SIZE	40 YR CANOPY DIA.	AREA COVER m ²	QUANTITY	TOTAL AREA m ²
SMALL DEC.	5.5M DIA	23.76	20	476
MEDIUM DEC.	10M DIA	78.54	0	0
LARGE DEC.	15M DIA	176.70	70	12,369
CONIFER	5M DIA	19.63	9	156
SUBSUBTOTAL				13,003
EX. TREE CANOPY COVER (APPROX.)			481	481
TOTAL				13,484

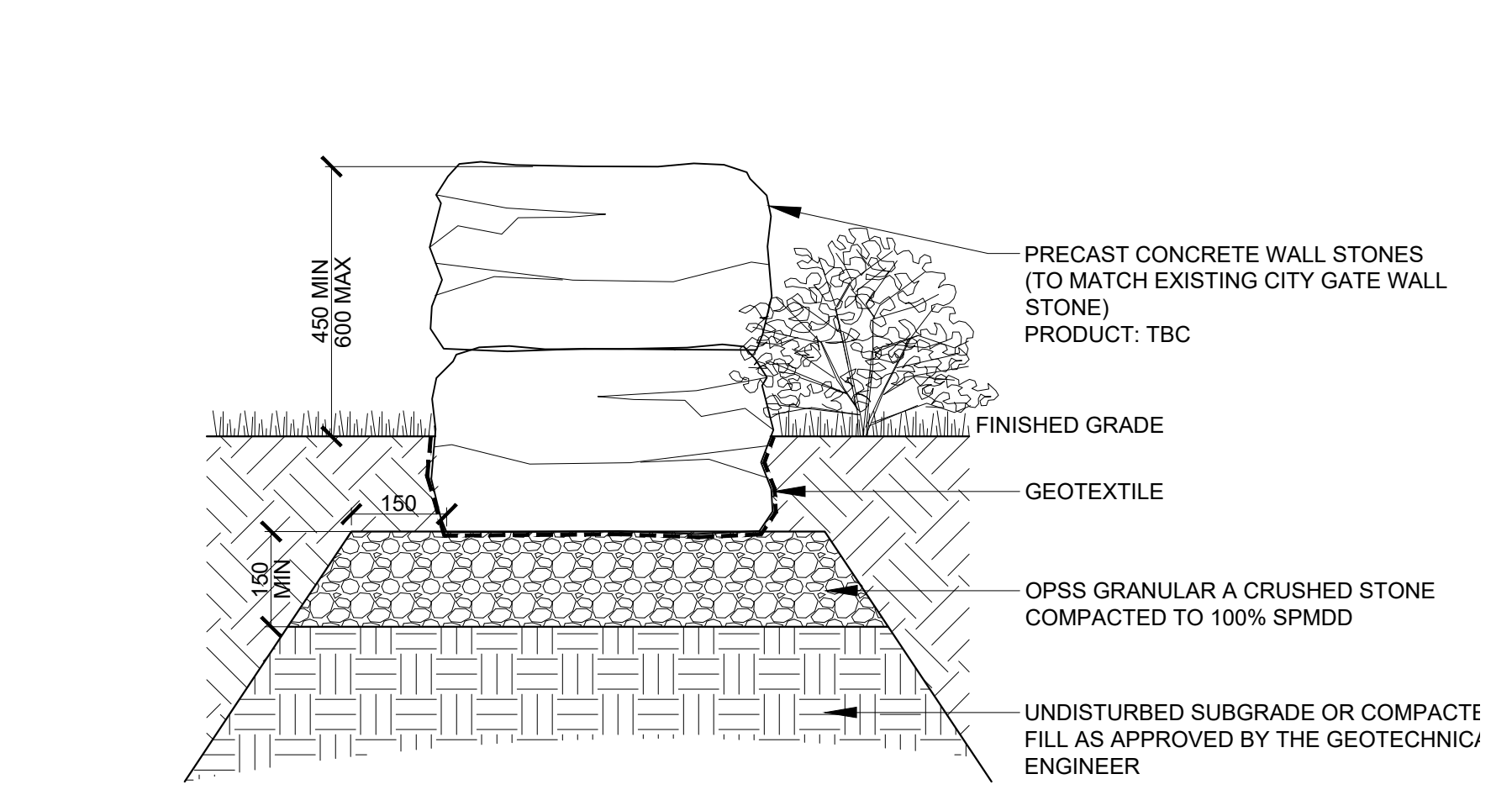




1 UNIT PAVER 1:10

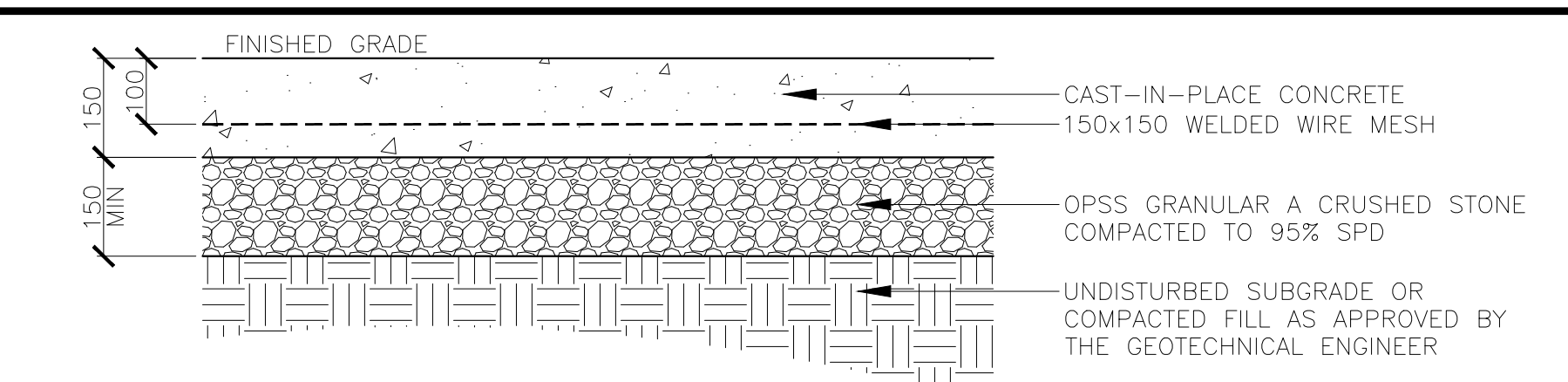


4 MAINTENANCE EDGE 1:10

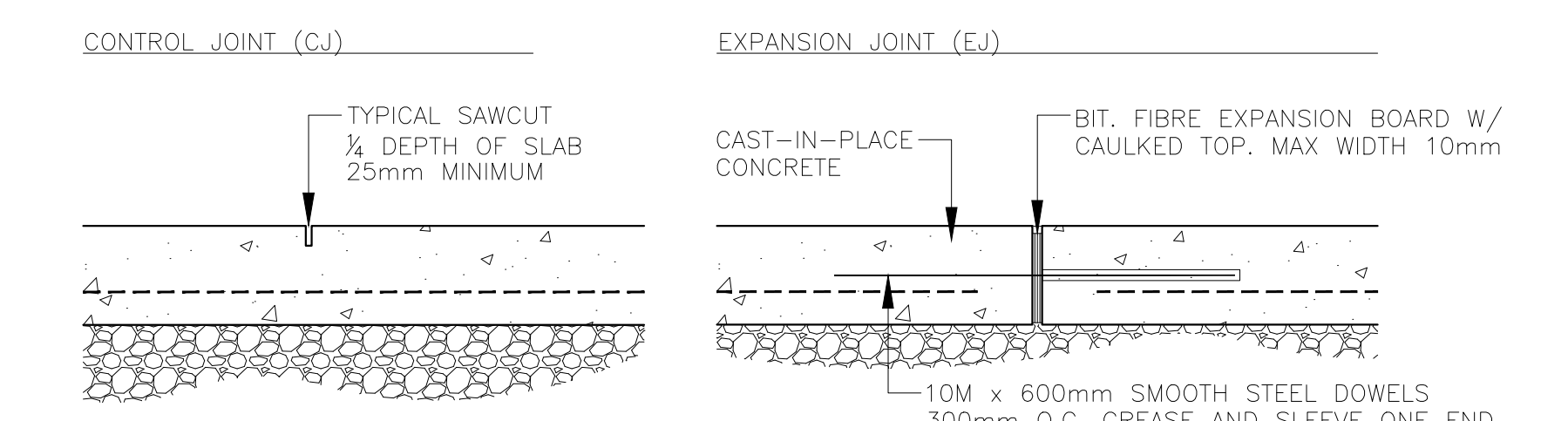


5 STACKED STONE WALL 1:10

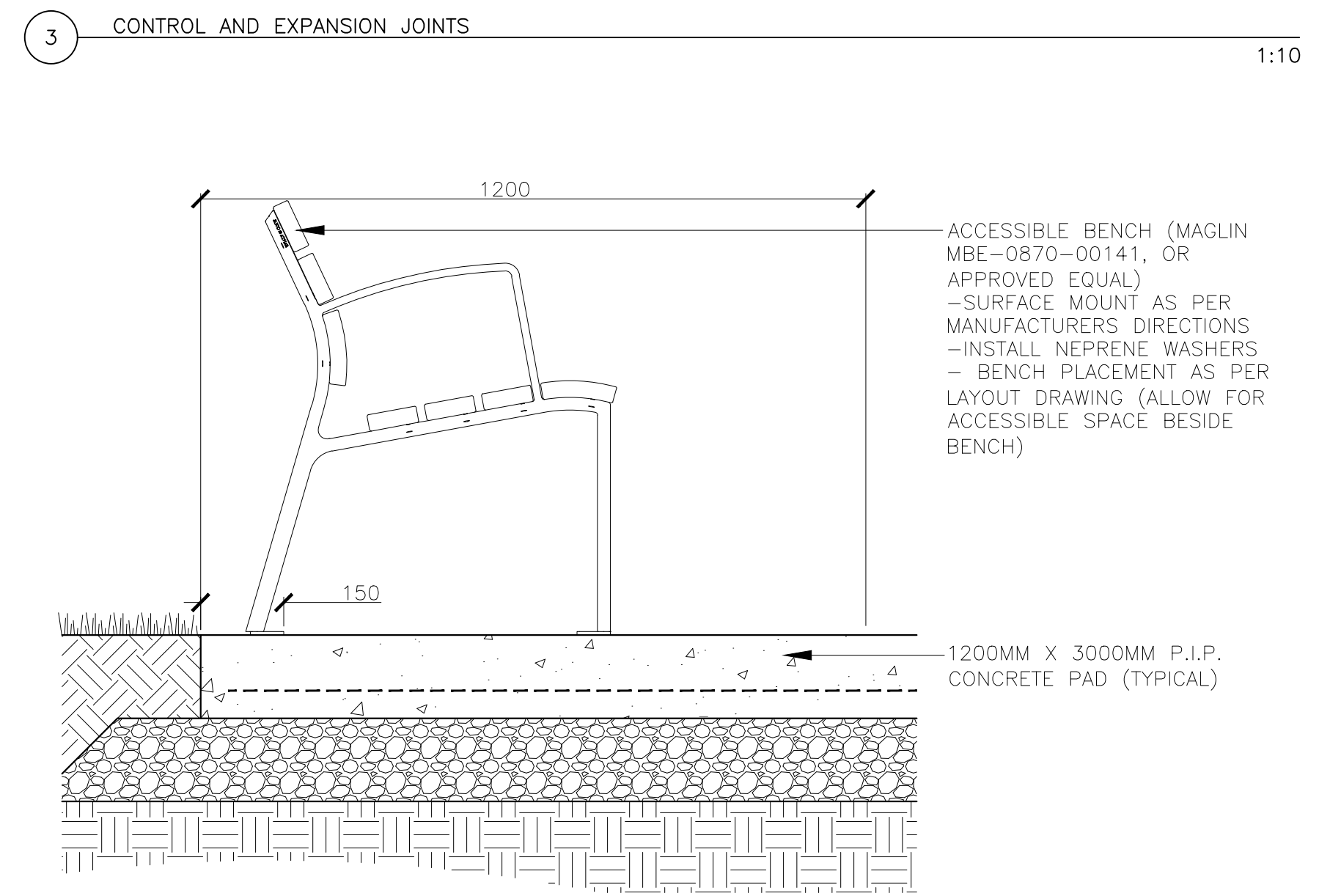
NOTES:
 1. PRECAST WALL STONE TO STEP AS REQUIRED. REFER TO GRADING PLAN FOR ELEVATIONS
 • DO NOT SLOPE TOP OF WALL
 2. MAXIMUM EXPOSED FACE/STEP IS 600mm (TYPICAL)
 3. EXCAVATION AND SUBGRADE CONDITION TO BE REVIEWED BY GEOTECHNICAL ENGINEER



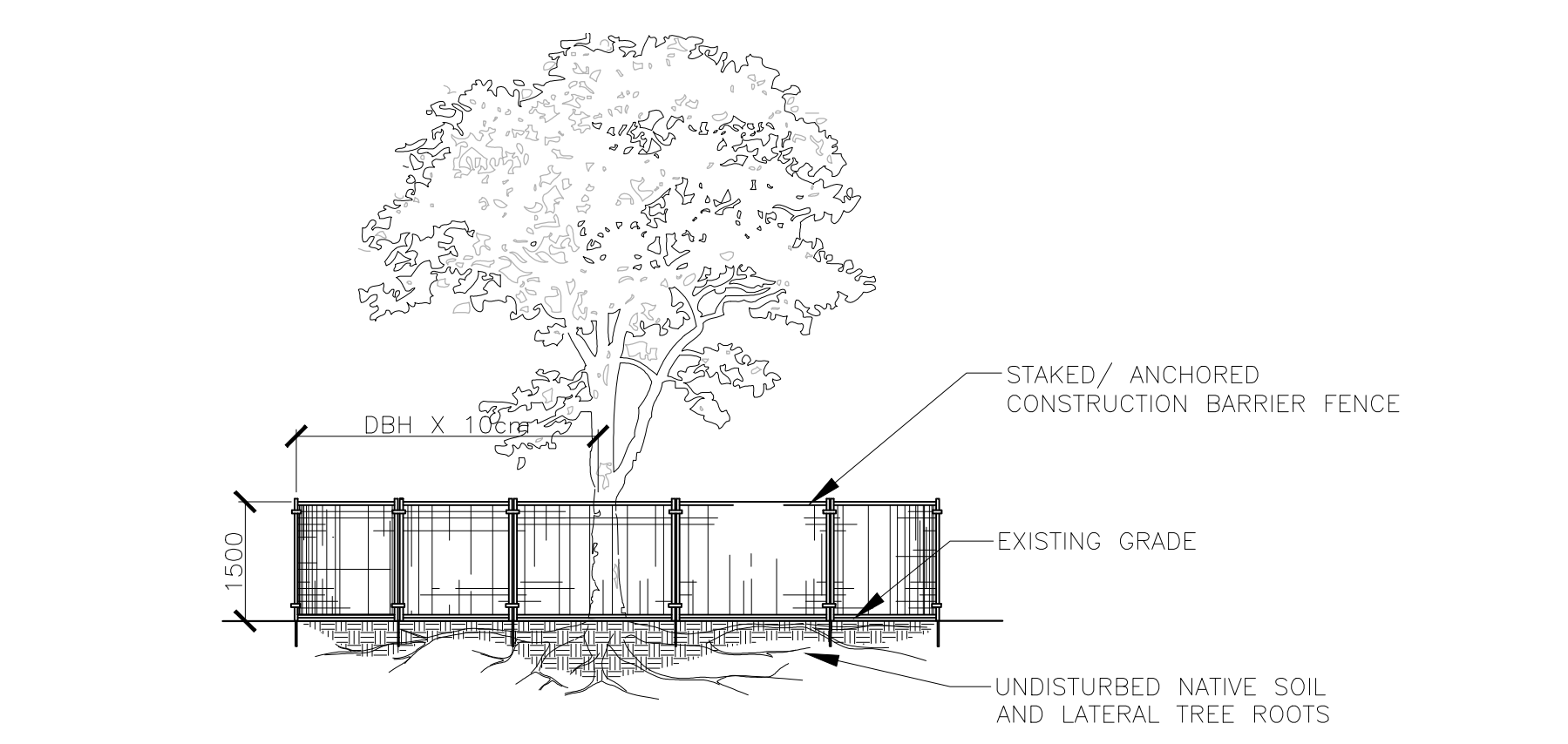
2 CONCRETE PAVING 1:10



3 CONTROL AND EXPANSION JOINTS 1:10

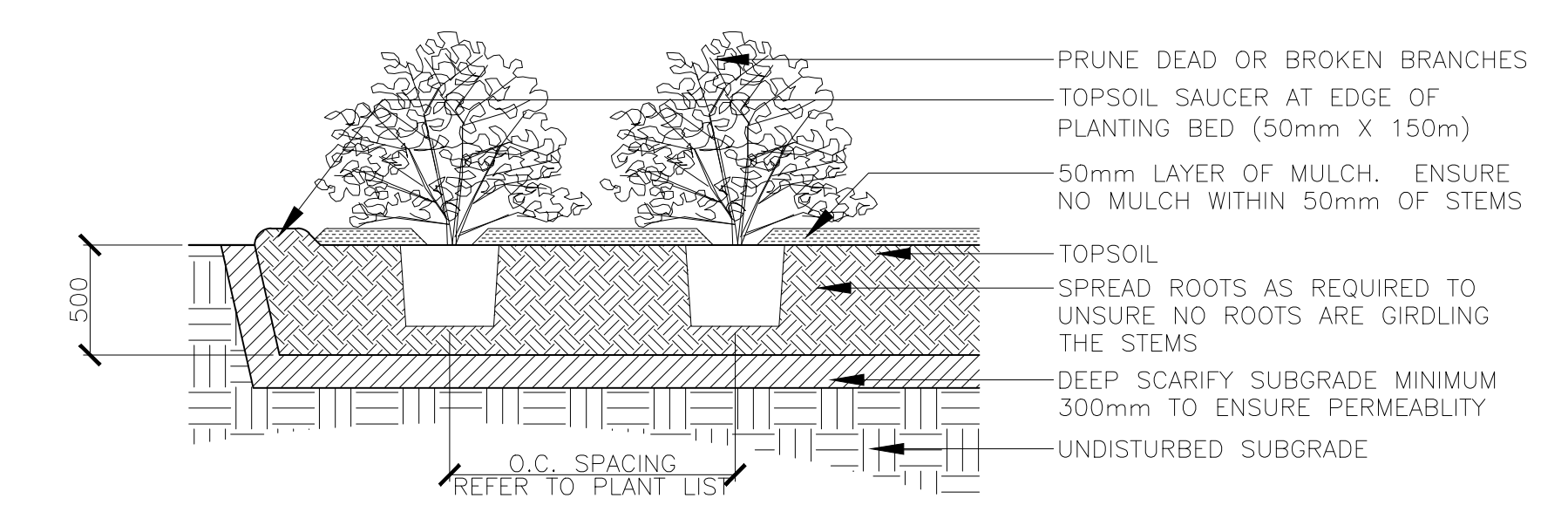


6 ACCESSIBLE BENCH PAD 1:10

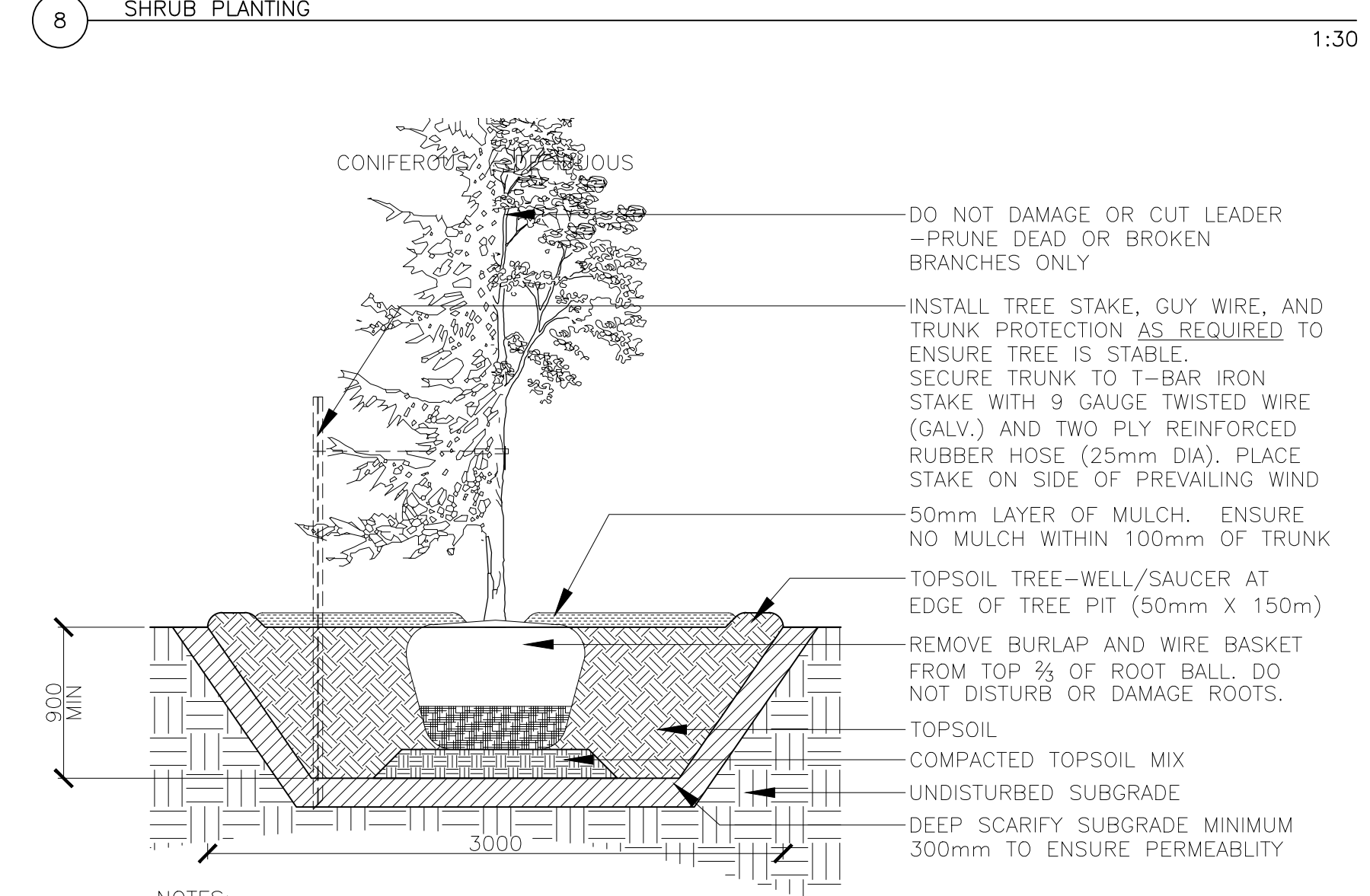


NOTES:
 THE FOLLOWING PROTECTION MEASURES MUST BE IMPLEMENTED FOR RETAINED TREES, BOTH ON SITE AND ADJACENT SITES, PRIOR TO ANY TREE REMOVAL OR SITE WORKS AND MAINTAINED FOR THE DURATION OF CONSTRUCTION ON SITE.
 1. UNDER THE GUIDANCE OF AN ARBORIST, ERECT A FENCE AT THE CRITICAL ROOT ZONE (CRZ) OF TREES WHERE THE CRZ IS ESTABLISHED AS BEING 10 CENTIMETERS FROM THE TRUNK FOR EVERY CENTIMETER OF TRUNK DIAMETER AT BREAST HEIGHT. THE CRZ IS CALCULATED AS DBH X 10cm.
 2. DO NOT PLACE ANY MATERIAL OR EQUIPMENT WITHIN THE CRZ OF THE TREE
 3. DO NOT ATTACH ANY SIGNS NOTICES OR POSTERS TO ANY TREE
 4. DO NOT RAISE OR LOWER THE GRADE WITHIN THE CRZ WITHOUT APPROVAL
 5. TUNNEL OR BORE WHEN DIGGING WITHIN THE CRZ OF A TREE
 6. DO NOT DAMAGE THE ROOT SYSTEM, TRUNK, OR BRANCHES OF ANY TREE
 7. ENSURE THAT EXHAUST FUMES FROM ALL EQUIPMENT ARE NOT DIRECTED TOWARDS ANY TREE CANOPY

7 TREE PROTECTION DETAIL 1:30

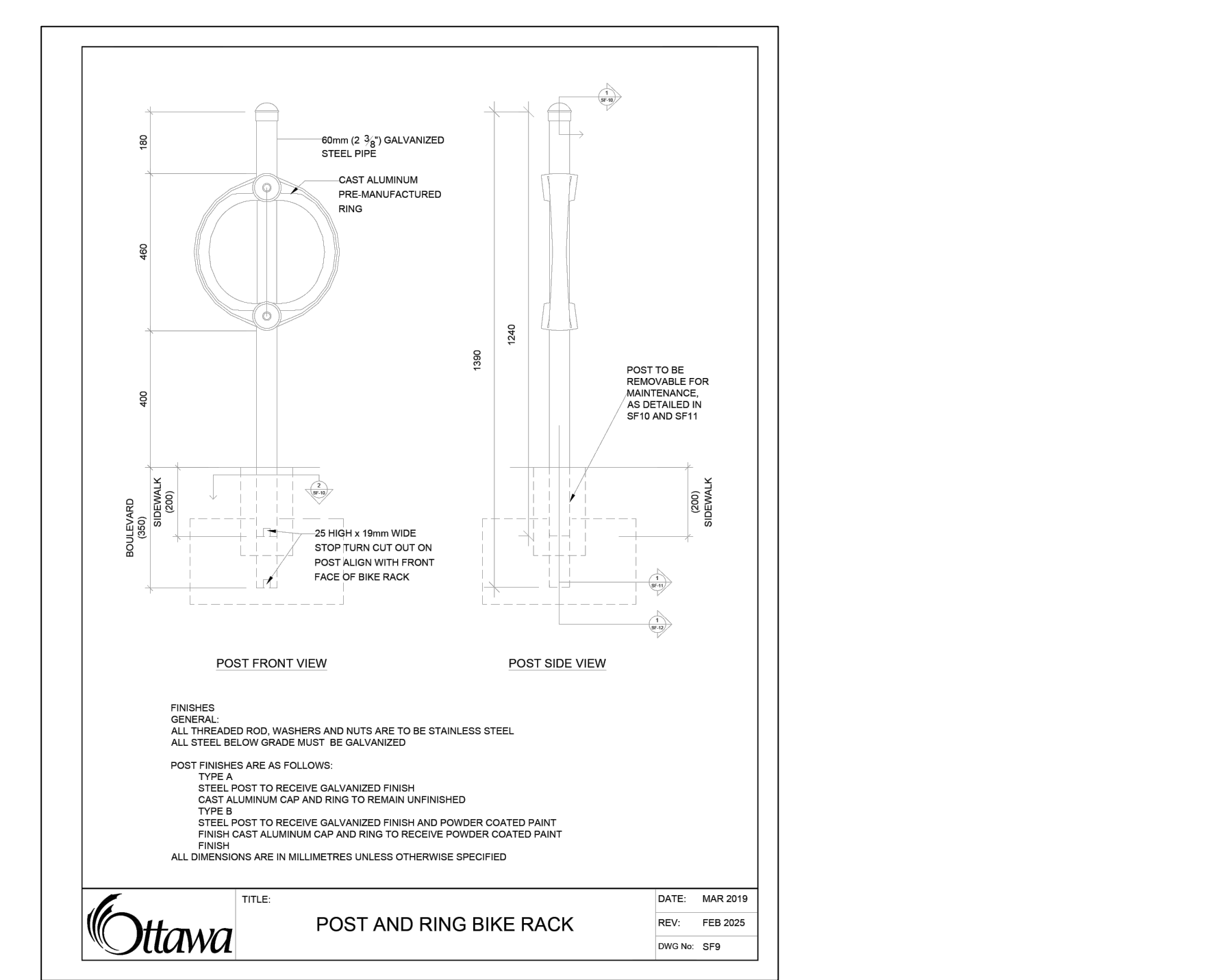


8 SHRUB PLANTING 1:30



9 TREE PLANTING 1:30

NOTES:
 • TREE STAKES ARE GENERALLY TO BE USED FOR CONDITIONS WHERE THE INSTALLED TREE IS UNSTABLE AND/OR BECOMES UNSTABLE
 • ALLOW 10mm TO 25mm SLACK ON GUY WIRE SUPPORT FOR TREE
 • TOP OF ROOT BALL TO RETAIN SAME ELEVATION AS GROWING CONDITIONS
 • REMOVE STAKES ONE YEAR AFTER INSTALL
 • INSTALL STAKE BEYOND EDGE OF ROOT BALL



10 BIKE RING NTS

Key Plan

1	ISSUED FOR SPA	02 FEB 2026
No.	Revision	Date

North: Stamp:

CSW Landscape Architecture
 Urban Design
 Site Planning
 Recreation and Park Planning
 Project Management

319 McRae Avenue, Suite 502, Ottawa, Ontario, K1Z 0B9
 Tel: (613) 729-4536

- All measurements in millimeters unless specified otherwise. Do not scale drawing. All drawings to be read in conjunction with written specifications.
- Copyright reserved. This drawing is the exclusive property of CSW Landscape Architects Ltd. and shall not be used without the consent thereof.
- This Drawing may not be used for construction until signed by the landscape architect. It is the responsibility of the contractor to:
 - check and verify all dimensions on site;
 - report all errors and/or omissions to the landscape architect;
 - comply with all pertinent codes and by-laws;
 - check and verify locations of all underground services with all local utilities prior to any digging.

Project: **CHOICE REIT 4175 STRANDHERD RETAIL**
 4175 STRANDHERD DRIVE
 OTTAWA, ON

Drawing: **LANDSCAPE DETAILS SHEET 01**

Scale: 1:500 Date: 05 NOV 2025

Design By: KK Drawn By: KK

Project Number: 2188-01 Sheet Number: L 2.0

