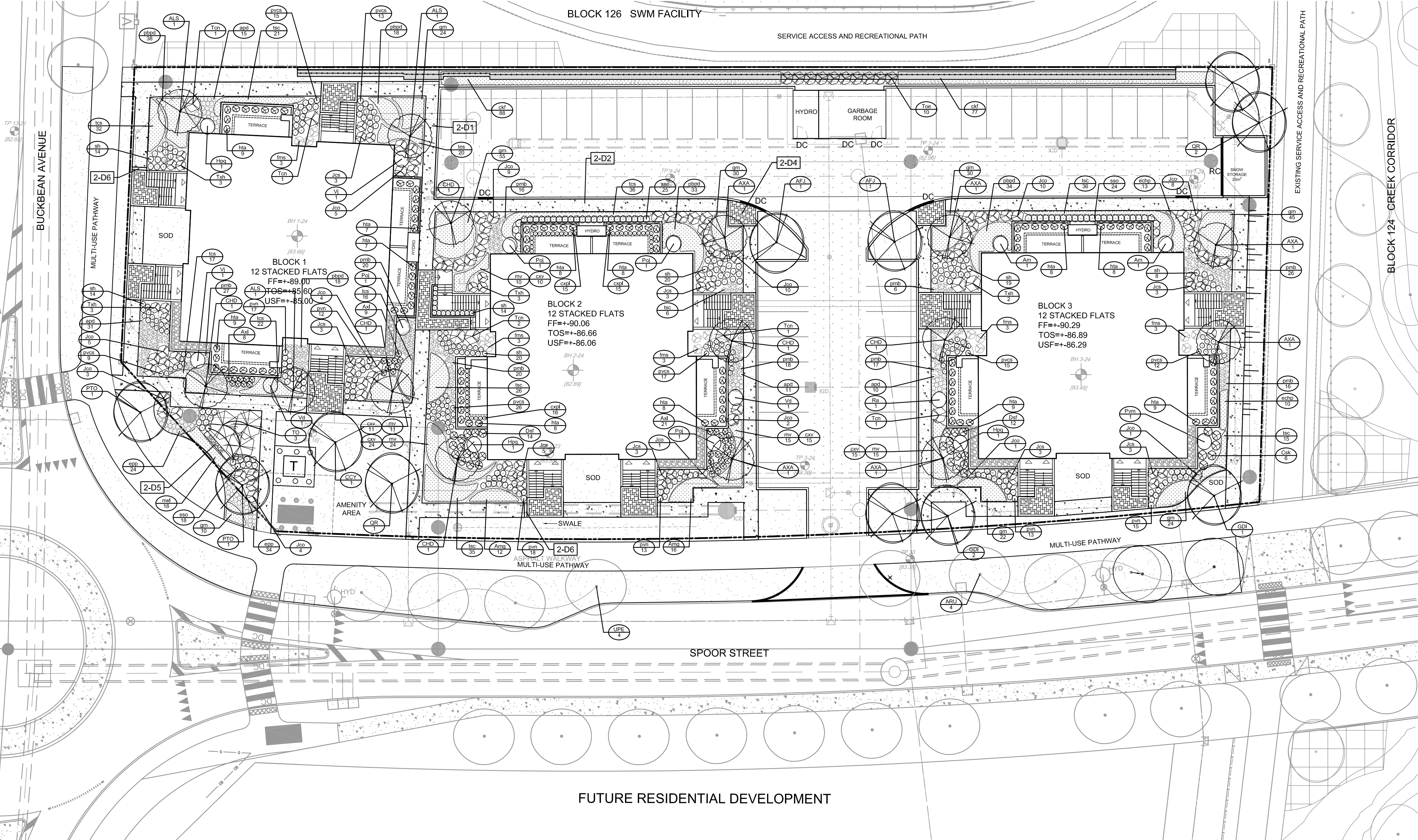


PLANT LISTS

KEY	QTY	BOTANICAL NAME	COMMON NAME	TREE HT AT MATURITY	SIZE	COND	SPACING	NATIVE/ NON-NATIVE*
<b>Deciduous Trees</b>								
ARU	4	<i>Acer rubrum 'Autumn Radiance'</i>	Autumn Radiance Red Maple	14m	50mm Cal	WB	As Shown	Native
UPE	4	<i>Ulmus procumbens 'UFS-Bleichen'</i>	Emerald Sunshine Elm	11m	50mm Cal	WB	As Shown	Native
<b>Deciduous Trees (Large)</b>								
CCY	1	<i>Carya coralliformis</i>	Bittersweet Hickory	20m	50mm Cal	PT	As Shown	Native
GOI	3	<i>Gymnocladia dioica</i>	Kentucky Coffee Tree	18m	50mm Cal	WB	As Shown	Native
PFO	2	<i>Prunella occidentalis</i>	American Sycamore	30m	50mm Cal	WB	As Shown	Native
GR	3	<i>Quercus robur</i>	Red Oak	22m	50mm Cal	WB	As Shown	Native
<b>Deciduous Trees (Medium)</b>								
AFJ	2	<i>Acer x freemanii 'Jefferson'</i>	Autumn Blaze Maple	15m	50mm Cal	WB	As Shown	Native
<b>Deciduous Trees (Small)</b>								
ALS	3	<i>Amelanchier laevis 'Spring Runy'</i>	Spring Runy Serviceberry	9.5m	50mm Cal	WB	As Shown	Native
AXA	6	<i>Amelanchier x grandiflora 'Autumn Brilliance'</i>	Autumn Brilliance Serviceberry	7.5m	50mm Cal	WB	As Shown	Native
CHD	6	<i>Cercis canadensis 'Hearts Desire'</i>	Hearts Desire™ Redbud	9m	150cm Ht	WB	As Shown	Native
<b>Coniferous Trees</b>								
TD	3	<i>Thuja occidentalis</i>	Eastern White Cedar	12m	200cm Ht	WB	As Shown	Native

Proposed Planting: Ownership	Total
Private	29
City-Owned (ROW)	8

KEY	QTY	BOTANICAL NAME	COMMON NAME	SIZE	COND	SPACING	NATIVE/ NON-NATIVE*
<b>Coniferous Shrubs</b>							
Tch	5	<i>Taxus cuspidata 'Nana'</i>	Dwarf Japanese Yew	50cm Spr	PT	As Shown	Non-Native
Jcs	26	<i>Juniperus chinensis 'Spartan'</i>	Spartan Juniper	100cm	PT	As Shown	Non-Native
Jco	63	<i>Juniperus horizontalis 'Plumosa Compacta'</i>	Compact Andorra Juniper	40cm Spr	PT	As Shown	Non-Native
Toe	10	<i>Thuja occidentalis 'Smaragd'</i>	Emerald Cedar	150cm	PT	As Shown	Native
Txn	11	<i>Taxus media 'Hicksii'</i>	Hicks Yew	100cm	PT	As Shown	Non-Native
<b>Deciduous Shrubs</b>							
Am	2	<i>Aronia melanocarpa</i>	Black Chokeberry	60cm Ht	PT	As Shown	Native
Amg	28	<i>Aronia melanocarpa Ground Hug</i>	Ground Hug Aronia	1g	PT	As Shown	Native
Acl	36	<i>Aronia x low Scape Mound (UCONVAM165)</i>	Low Scape Mound Chokeberry	40cm Ht	PT	As Shown	Native
Ca	6	<i>Cornus sericea 'Kelsey'</i>	Kelsey Dogwood	40cm Ht	PT	As Shown	Native
Daf	26	<i>Dierilla splendens 'Firefly Nightglow'</i>	Firefly Nightglow Bush Honeysuckle (B Madrigal)	60cm Ht	PT	As Shown	Native
Hpq	3	<i>Hydrangea paniculata 'Quick Fire'</i>	Quick Fire Hydrangea	60cm Ht	PT	As Shown	Non-Native
Pj	4	<i>Physocarpus opulifolius 'UEFAM'</i>	Amber Jubilee Ninebark	60cm Ht	PT	As Shown	Native
Ra	1	<i>Rhus aromatica</i>	Fragrant Sumac	60cm Ht	PT	As Shown	Native
Vd	2	<i>Viburnum dentatum</i>	Arrowwood Viburnum	60cm Ht	PT	As Shown	Native
Vj	2	<i>Viburnum x juddii</i>	Juddi Viburnum	60cm Ht	PT	As Shown	Non-Native
<b>Perennials</b>							
apd	67	<i>Aster novae-angliae 'Purple Dome'</i>	Purple Dome New England Aster	1g	plug	As Shown	Native
echo	23	<i>Echinacea purpurea 'Powwow Wild Berry'</i>	Wild Berry Coneflower	1g	PT	60cm O.C	Native
epp	57	<i>Echinacea purpurea</i>	Coneflower	1g	PT	60cm O.C	Native
gm	240	<i>Geranium maculatum</i>	Spotted Cranesbill	1g	PT	60cm O.C	Native
hta	98	<i>Hosta 'August Moon'</i>	August Moon Hosta	1g	PT	As Shown	Non-Native
nwl	18	<i>Nepeta faassenii 'Walker's Low'</i>	Walker's Low Catmint	1g	PT	70cm O.C	Non-Native
ppd	141	<i>Penstemon barbatus 'Prairie Dusk'</i>	Prairie Dusk Beard Tongue	1g	PT	60cm O.C	Non-Native
prb	166	<i>Prion divaricata 'May Breeze'</i>	Woodland Phlox	1g	PT	50cm O.C	Non-Native
rv	13	<i>Mertensia virginica</i>	Virginia bluebell	1g	PT	60cm O.C	Native
isc	139	<i>Thymus serpyllum 'Coccineus'</i>	Red Creeping Thyme	1g	PT	60cm O.C	Non-Native
<b>Ornamental Grasses / Ferns</b>							
cfd	192	<i>Calamagrostis acutiflora 'Karl Foerster'</i>	Karl Foerster Feather Reed Grass	1g	PT	80cm O.C	Non-Native
cxpl	46	<i>Carex plantaginifolia</i>	Plantain-Leaved Sedge	1g	PT	As Shown	Native
cxv	75	<i>Carex pensylvanica</i>	Pennsylvania Sedge	1g	PT	60cm O.C	Native
fme	15	<i>Maileucia struthiopteris</i>	Ostrich Fern	1g	PT	100cm O.C	Native
pvca	107	<i>Panicum virgatum 'Cheyenne Sky'</i>	Cheyenne Sky Switch Grass	1g	PT	70cm O.C	Native
pvn	88	<i>Panicum virgatum 'Northwind'</i>	Northwind Switch Grass	1g	PT	70cm O.C	Native
sh	109	<i>Sporobolus heterolepis</i>	Prairie Dropseed	1g	PT	60cm O.C	Native
sso	67	<i>Schizachyrium scoparium 'Standing Ovation'</i>	Standing Ovation Little Blue Stem	1g	PT	50cm O.C	Native



**NOTE:**  
THE POSITION OF ALL POLE LINES, CONDUITS, WATERMANS, SECTORS AND OTHER UNDERGROUND UTILITIES AND STRUCTURES IS NOT NECESSARILY SHOWN ON THE CONTRACT DRAWINGS, AND WHERE SHOWN, THE ACCURACY OF THE POSITION OF SUCH UTILITIES AND STRUCTURES IS NOT GUARANTEED. BEFORE STARTING WORK, DETERMINE THE EXACT LOCATION OF ALL SUCH UTILITIES AND STRUCTURES AND ASSUME ALL LIABILITY FOR DAMAGE TO THEM.

**Owner:**  
Uniform Developments  
117 Camille Drive, #300  
Nepean, ON K2G 5X3  
Phone: 613.225.0770

**Engineer:**  
Novatech Engineers, Planners  
& Landscape Architects  
240 Michael Cowpland Drive,  
Ottawa, ON, K2M 1P6  
Phone: 613.254.9643

**Architect:**  
Hobin Architecture INC.  
63 Pamela Street,  
Ottawa, ON K1S 3K7  
Phone: 613.236.7200

**Surveyor:**  
Annis, O'Sullivan, Vollebek Ltd.  
14 Concourse Gate, Suite 500  
Nepean, ON K2E 7S6  
Phone: 613.727.0850

<b>DISCLAIMER:</b> The elements on this plan illustrate the design intent and general constructability of the proposed landscape which will support the associated development. This is to demonstrate how the canopy cover, urban design, health, and climate change objectives of the Official Plan will be met through tree planting and site design. This drawing is for City review only and is not intended for construction. Final detailed design and construction documentation is to be provided with certified 'Issued for Construction' drawings and specifications prior to construction.			
4.	REVISED PER FORMAL REVIEW COMMENTS	DEC 1/25	SC
3.	REVISED PER FORMAL REVIEW COMMENTS	AUG 14/25	SC
2.	REVISED PER COMPLETENESS REVIEW COMMENTS	MAY 09/25	SC
1.	ISSUED FOR SITE PLAN APPLICATION	MAR 21/25	SC
No.	REVISION	DATE	BY

CITY DETAILS

Related details from City of Ottawa Standard Tender Documents Volume No. 2 Standard Detail Drawings.

- SC4. Typical Concrete Sidewalk in Boulevard
- SC5. Sidewalk Construction Joints
- SC7.1 Curb Return Entrances - With Boulevard

NOVATECH DETAILS

Found on Sheet L2.

- D1. Standard Deciduous Tree Planting
- D2. Shrub and Perennial Planting
- D4. Pavers On Granular Base
- D5. Signage Detail
- D6. Precast Concrete Steps

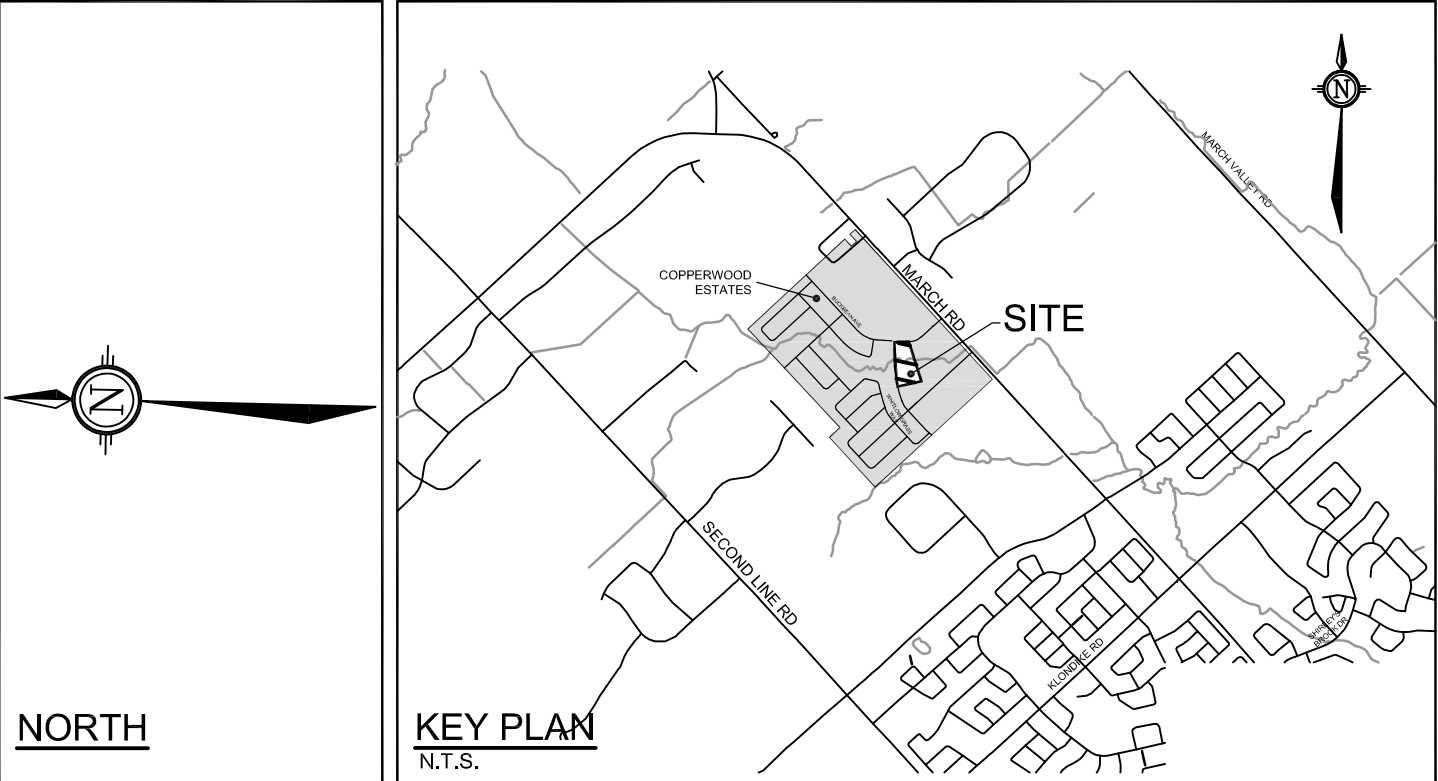
TREE PLANTING IN SENSITIVE CLAY

- The landscape plans have been developed in accordance with the Paterson Group Geotechnical Report PG6613-Revision 3, dated May 1, 2025 which includes the Test Hole Locations Plan, dated April, 2023 that confirms the categories and locations of clay soils, and coordinated with the Paterson Group Geotechnical Memo PG6613-MEMO.01 dated May 1, 2025, which provides responses to the Geotechnical related comments from the City.
- As per the Paterson Group Geotechnical memo PG6613-MEMO.01 - Response to City Comments, dated May 1, 2025, due to the thin nature of the silty clay deposit impacting buildings 1 and 2, this layer will be removed from under the proposed footing and replaced with engineered fill. This will remove the tree setback restrictions for the buildings 1 and 2.
- Based on the subsurface conditions observed in the test holes around block 3, this block is not expected to be subject to tree planting setback requirements.
- Therefore, in this case, tree planting will not be restricted by the sensitivity clay soils.
- The soil volumes provided are sufficient for a reasonable chance of tree survival. Unless otherwise noted, all new trees on City property meet the minimum soil volume requirements of the following, based on a depth of 1.5m below finished grade, and subtracting the volume of utility trenches.

- a. Small tree (mature height up to 7.5m) - 25m<sup>3</sup>/ minimum soil volume provided.
- b. Medium tree (mature height 7.5-14m) - 30m<sup>3</sup>/ minimum soil volume provided.

Where trees share a continuous greenspace:

- c. Two (2) small trees - 15m<sup>3</sup>/ minimum soil volume provided per tree.
- d. Two (2) medium trees - 18m<sup>3</sup>/ minimum soil volume provided per tree.



LEGEND

3-D1  
DETAIL SHEET #  
EG. L1, L2, ETC.

PROPERTY LIMIT

PROPOSED CONCRETE

OFF-SITE CONCRETE

PROPOSED PAVERS

RIVER STONE

SOD

PROPOSED DECIDUOUS TREE

PROPOSED CONIFEROUS TREE

PROPOSED PERENNIALS / ORNAMENTAL GRASSES / FERNS

PROPOSED SHRUBS

TREES AROUND THE SITE (BY OTHERS)

1.07m TRANSLUCENT GUARD (SEE SITE PLAN)

CHAINLINK FENCE 1.5m HT (BY OTHERS)

RAILING ON THE RETAINING WALL, REFER TO CIVIL

RETAINING WALL REFER TO CIVIL

SPECIES (SEE PLANT LIST)

QUANTITY

GENERAL

- Read and interpret this drawing/ drawing set in conjunction with all the contract details and specifications, including related civil, utility, structural, architectural, mechanical, electrical, environmental, geotechnical, and survey information.
- The Contractor is to determine the exact location, size, material, and elevation of all existing utilities prior to commencing construction. Protect and assume responsibility for all existing utilities regardless of being shown on the drawings.
- It is essential to use the plans and details in conjunction with the specifications and notes.
- Do not scale drawings. Work to dimensions only.
- Protect all existing and retained vegetation for the duration of construction according to the contract details and specifications.
- Reinstate all areas and items damaged or disturbed, beyond the Limit of Work, because of construction activities, including but not limited to construction staging areas, haul roads, stockpile areas, etc. to the satisfaction of the Consultant. Unless otherwise noted, Contractor is to reinstate all areas to pre-construction condition or better to the satisfaction of the Contract Administrator.

PLANTING

- Plant material to be No. 1 Grade and is to comply with Canadian Standards for Nursery Stock (latest edition) published by the Canadian Nursery Landscape Association.
- Use structurally sound plant material with strong fibrous root system free of disease, defects, and injuries. Use trees with straight trunks, well and characteristically branched for species. Obtain approval from consultant of plant material at source prior to digging. All trees and shrubs to be container grown, potted, W/B or B/B, as indicated on Plant List. Bare root plants are only acceptable for certain species and as approved by the Landscape Architect.
- Plant material substitutions are not to be permitted without the written approval from the Consultant, with 48 hours notice, prior to shipping plant material.
- Plant locations are schematic / approximate only. Contractor is to stake out locations on site for approval by the Landscape Architect prior to installation.
- The illustrated number of plants shown in the Planting Plan supersedes the estimated number in the Plant List. Contractor to report any discrepancies to the Landscape Architect prior to installation. Contractor to assume full responsibility if the Landscape Architect is not notified.
- Ensure trees are thoroughly watered following planting. Monitor material and ensure adequate moisture until acceptance.
- In heavy clay or poorly drained soils, set root ball with root collar 75-100mm higher than finished grade.
- Approved topsoil depths are as follows:
  - a. Plant Beds - 450mm continuous depth. Applies to shrubs, perennials, vines, and groundcovers.
  - b. Sod/ Seed Areas - 100mm depth.
  - c. Reforestation - 300mm depth.
- Sod to be No. 1 Kentucky Bluegrass Sod grown from minimum mixture of 3 Kentucky Bluegrass cultivars. Quality and source are to comply with Canadian Standards for Nursery Stock, Section 17, (latest edition) published by the Canadian Nursery Landscape Nursery Landscape Association.
- Install a 1.2m sod strip adjacent to all hard surfaces. Note, sod is not typically graphically shown on plans.
- Apply the following mineral fertilizer unless soil tests show other requirements:
  - a. Plant Beds - (8-32-16), i.e. 8% Nitrogen, 32% Phosphorus, 16% Potash per manufacturer specifications.
  - b. Sod Areas - (8-32-16), i.e. 8% Nitrogen, 32% Phosphorus, 16% Potash at a rate of 350kg/ha.
- Where applicable, for any plant areas with a mix of species/ cultivars notes, Contractor is to cluster like plants in groups of 3-5 and evenly distribute these in the noted area.

CONSTRUCTION:

- Refer to the sheet 122144-L3 for Construction Notes.

SEAN MOORE MCIP, RPP

MANAGER, DEVELOPMENT REVIEW - WEST  
PLANNING, INFRASTRUCTURE & ECONOMIC  
DEVELOPMENT DEPARTMENT, CITY OF OTTAWA

APPROVED

By Sean Moore at 8:27 pm, Jan 21, 2026

**SOURCE REFERENCE:**  
PLAN OF SUBDIVISION OF PART OF LOTS 13 AND 14 CONCESSION 3 GEOGRAPHIC TOWNSHIP OF MARCH, CITY OF OTTAWA, PREPARED BY ANNIS, O-SULLIVAN, VOLLEBEK LTD. ON FEBRUARY 12, 2025, (PRELIMINARY 4M PLAN)

**LOCATION**  
COPPERWOOD FLATS, 1101 SPOOR ST, KANATA  
STACKED APARTMENTS - BLOCK 125

**DRAWING NAME**  
LANDSCAPE PLAN

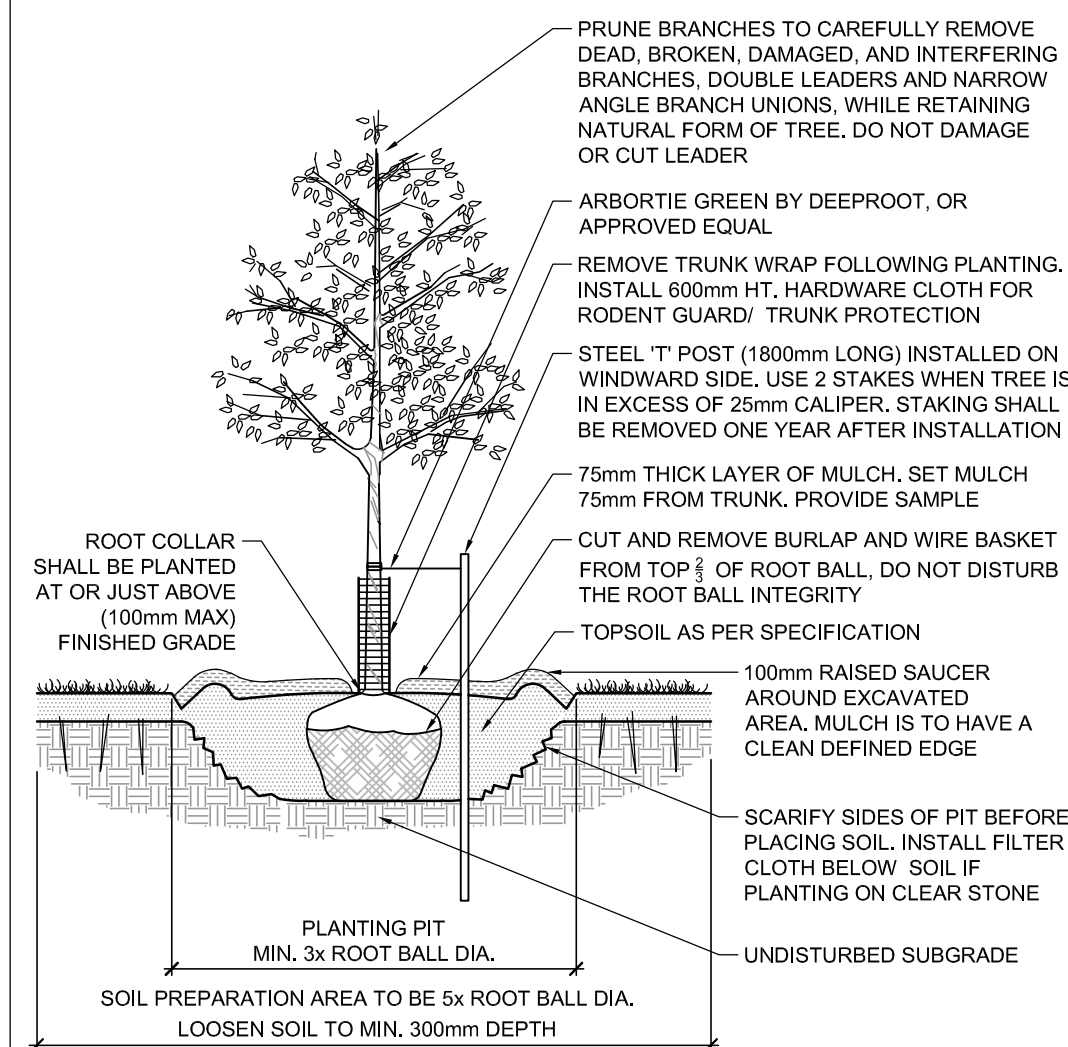
**PROJECT No.**  
122144

**REV # 4**  
122144-125-L1

M:\2025\122144\BLOCK 307\CAD\landscape\122144-BLK125-L1\_Dwg\_11\_2025 - 340pm.scsvall

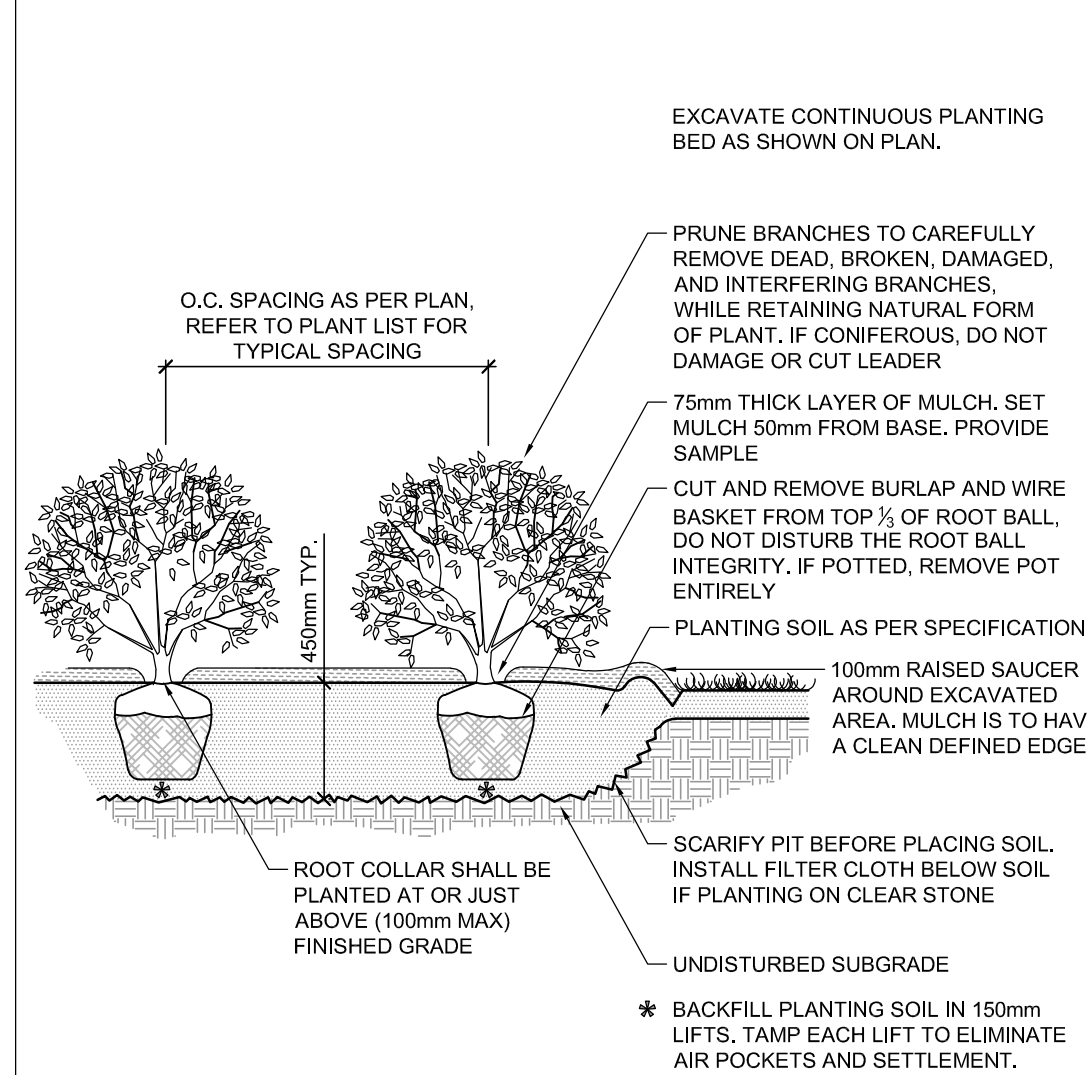
D07-12-25-0039





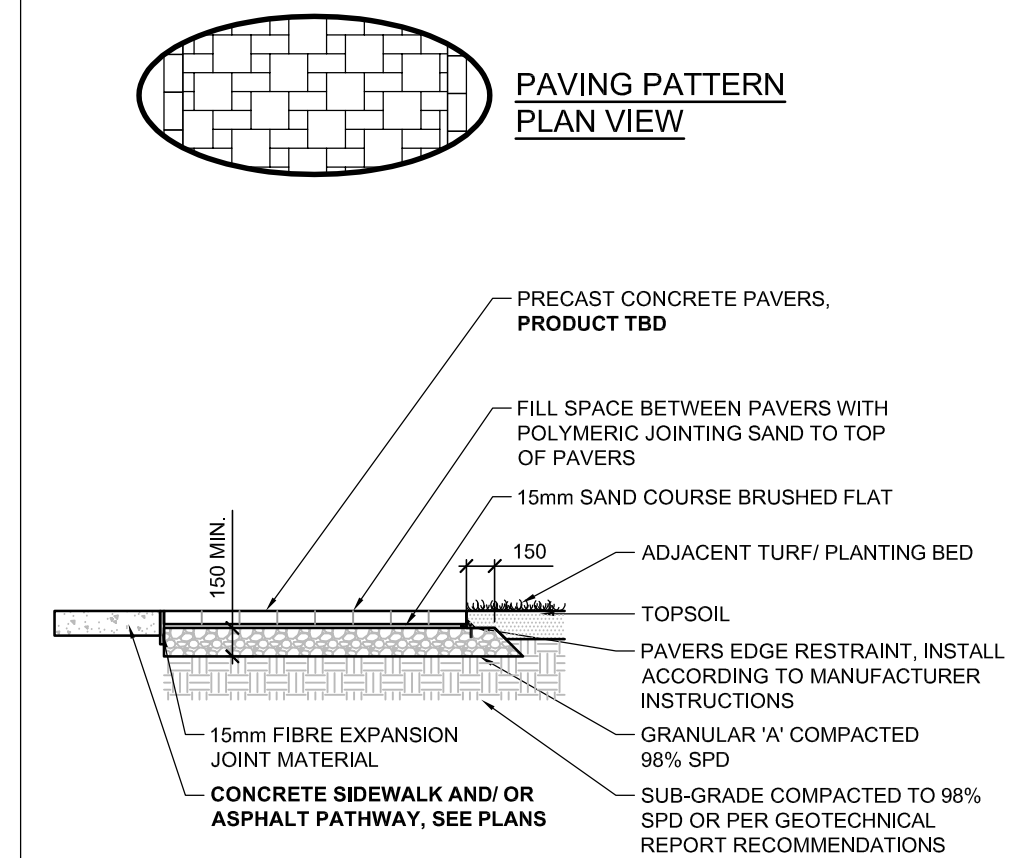
## STANDARD DECIDUOUS TREE PLANTING

D1



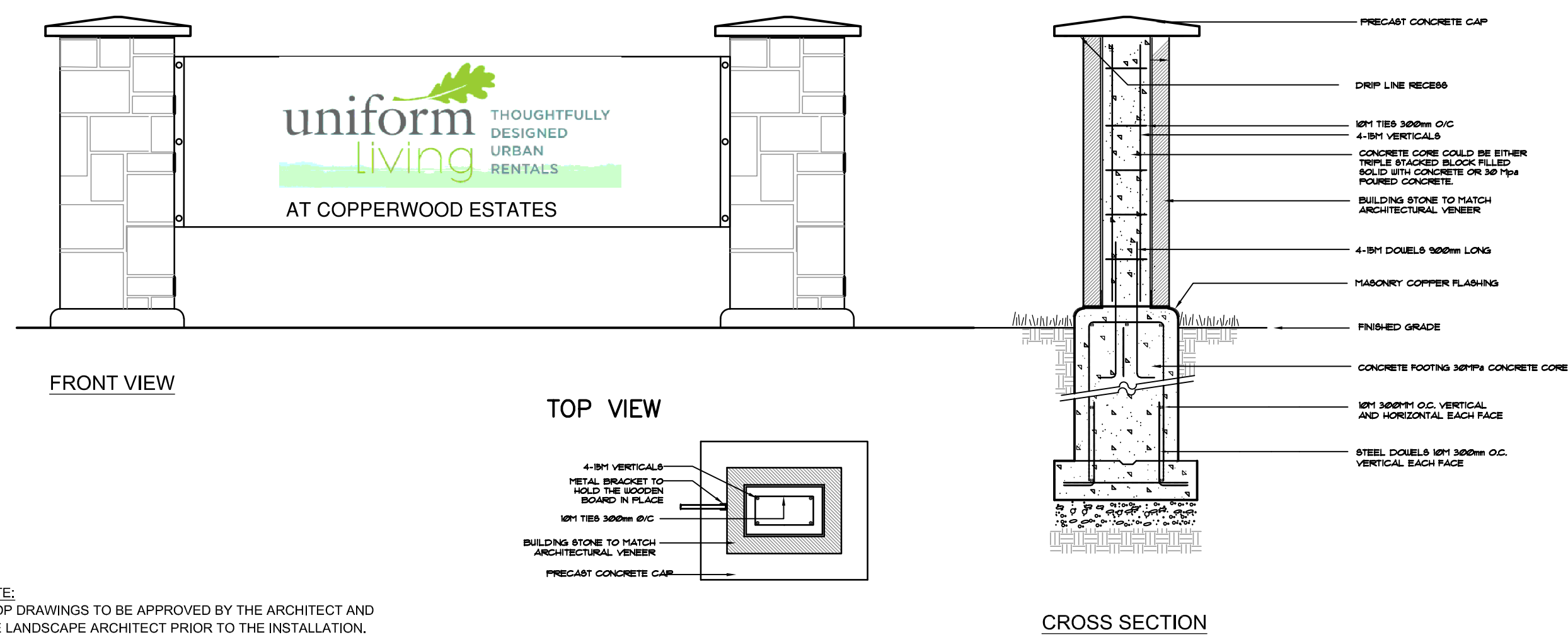
SHRUB AND PERENNIAL PLANTING

D2



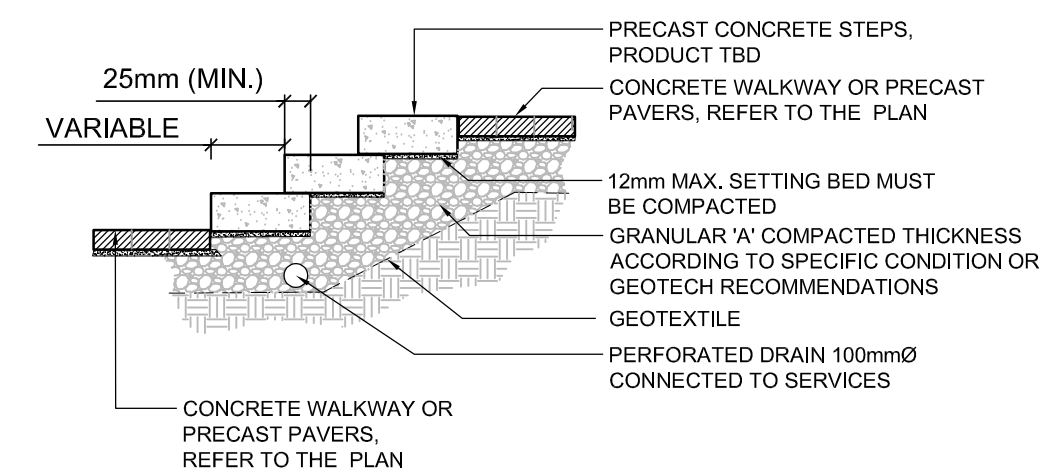
PAVERS ON GRANULAR BASE

D4




SIGNAGE DETAIL (NOT TO SCALE)

D5



## PRECAST CONCRETE STEPS

D6

  
SEAN MOORE MCIP, RPP  
MANAGER, DEVELOPMENT REVIEW - WEST  
PLANNING, INFRASTRUCTURE & ECONOMIC  
DEVELOPMENT DEPARTMENT, CITY OF OTTAWA

**APPROVED**  
By Sean Moore at 8:27 pm, Jan 21, 2026

**NOTE:**  
THE POSITION OF ALL POLE LINES, CONDUITS, WATERMANS, SEWERS AND OTHER UNDERGROUND AND OVERGROUND UTILITIES AND STRUCTURES IS NOT NECESSARILY SHOWN ON THE CONTRACT DRAWINGS, AND WHERE SHOWN, THE ACCURACY OF THE POSITION OF SUCH UTILITIES AND STRUCTURES IS NOT GUARANTEED. BEFORE STARTING WORK, DETERMINE THE EXACT LOCATION OF ALL SUCH UTILITIES AND STRUCTURES AND ASSUME ALL LIABILITY FOR DAMAGE TO THEM.

**Owner:**  
Uniform Developments  
117 Centerpointe Drive, #300  
Nepean, ON K2G 5X3  
Phone: 613.225.0770

**Engineer:**  
Novetech Engineers, Planners  
& Landscape Architects,  
240 Michael Cowpland Drive,  
Ottawa, ON, K2M 1P6  
Phone: 613.254.9643

**Architect**  
Hobin Architecture INC  
63 Pamela Street,  
Ottawa, ON K1S 3K7  
Phone: 613.236.7200

**Surveyor:**  
Annis, O'Sullivan, Vollebekk Ltd  
14 Concourse Gate, Suite 500  
Nepean, ON K2E 7S6  
Phone: 613.727.0850

**DISCLAIMER:**  
The elements on this plan illustrate the design intent and general constructability of the proposed landscape which will support the associated development. This is to demonstrate how the canopy cover, urban design, health, and climate change objectives of the Official Plan will be met through tree planting and site design. This drawing is for City review only and is not intended for construction. Final detailed design and construction documentation is to be provided with certified 'Issued for Construction' drawings and specifications prior to construction.

4.	REVISED PER FORMAL REVIEW COMMENTS	DEC 1/25	SC	
3.	REVISED PER FORMAL REVIEW COMMENTS	AUG 14/25	SC	
2.	REVISED PER COMPLETENESS REVIEW COMMENTS	MAY 09/25	SC	
1.	ISSUED FOR SITE PLAN APPLICATION	MAR 21/25	SC	
No.	REVISION	DATE	BY	

SCALE		DESIGN
		SC
		CHECKED
		SC
		DRAWN
		TB
		CHECKED
		SC
		APPROVED
		SC

**FOR REVIEW ONLY**



**NOVATECH**  
Engineers, Planners & Landscape Architects  
Suite 200, 240 Michael Cowpland Drive  
Ottawa, Ontario, Canada K2M 1P6

Telephone (613) 254-9643  
Facsimile (613) 254-5867  
Website [www.novatech-eng.com](http://www.novatech-eng.com)

LOCATION  
COPPERWOOD FLATS, 1101 SPOOR ST, KANATA  
STACKED APARTMENTS - BLOCK 125

DRAWING NAME

LANDSCAPE DETAILS

PROJECT No.	122144
REV	REV # 4
DRAWING No.	122144-125-L2



PROPOSED AND RETAINED CANOPY COVER ESTIMATE:

PROPOSED CANOPY COVERAGE AT MATURITY				
SIZE OF PROPOSED TREE	AVERAGE MATURE SPREAD	CANOPY COVERAGE PER TREE AT MATURITY (m2)	QUANTITY OF TREES	TOTAL CANOPY COVERAGE (m2)
Deciduous trees- Small	4.5m	16	15	240
Deciduous trees- Medium*	10m	79	10	790
Deciduous trees- Large	15m	177	9	1590
Conifers	5m	20	3	60

TOTAL PROPOSED CANOPY COVERAGE (m2):

2,680

TOTAL SITE AREA (m2):

5,503

EST. PROPOSED CANOPY COVERAGE (%):

49%

1. Area of a circle =  $(\pi r^2)$

2. Canopy coverage per tree calculation: (average mature spread/2) x (average mature spread/2) x  $\pi$

\*3. ROW trees along Spoor Street have also been counted under the medium canopy category

SEAN MOORE MCIP, RPP  
MANAGER, DEVELOPMENT REVIEW - WEST  
PLANNING, INFRASTRUCTURE & ECONOMIC  
DEVELOPMENT DEPARTMENT, CITY OF OTTAWA

SOIL AVAILABILITY CALCULATIONS:

Planting bed no.	Available Soil Area (sq m)	Available Soil Volume* (cu m)	No. of trees proposed				Total No. of trees	Min. required Soil volume total (cu m)
			Small (min. 25m <sup>3</sup> soil for single & 15m <sup>3</sup> for shared)	Medium (min. 30m <sup>3</sup> soil for single & 18m <sup>3</sup> for shared)	Large (min. 35m <sup>3</sup> soil for single & 20m <sup>3</sup> for shared)	Conifers (min. 30m <sup>3</sup> soil for one tree)		
Planting bed 1	87	130				3	5	130.00
Planting bed 2	172	258			2		2	40.00
Planting bed 3	109	164	1				1	25.00
Planting bed 4	89	134					NA	0.00
Planting bed 5	25	38					NA	0.00
Planting bed 6	23	35			1		1	35.00
Planting bed 7	101	152	1		2		3	55.00
Planting bed 8	63	95					NA	0.00
Planting bed 9	128	192	2				2	30.00
Planting bed 10	18	27		1			1	30.00
Planting bed 11	18	27		1			1	30.00
Planting bed 12	67	101	2				2	30.00
Planting bed 13	67	101	2				2	30.00
Planting bed 14	130	195	2				2	30.00
Planting bed 15	46	69	1				1	25.00
Planting bed 16	251	377			2		2	40.00
Planting bed 17	65	98	1				1	25.00
Planting bed 18	43	64					NA	0.00
Planting bed 19	72	108	2				2	30.00
Planting bed 20	41	62	1				1	25.00

\*Note : For all planting beds proposed, the available soil depth is considered to be 1.5m.

TREE PLANTING IN SENSITIVE CLAY

- The landscape plans have been developed in accordance with the Paterson Group Geotechnical Report PG6613-1 Revision 3, dated May 1, 2025 which includes the Test Hole Locations Plan, dated April, 2023 that confirms the categories and locations of clay soils, and coordinated with the Paterson Group Geotechnical Memo PG6613-MEMO.01 dated May 1, 2025, which provides responses to the Geotechnical related comments from the City.
- As per the Paterson Group Geotechnical memo PG6613-MEMO.01 - Response to City Comments, dated May 1, 2025, due to the thin nature of the silty clay deposit impacting buildings 1 and 2, this layer will be removed from under the proposed footing and replaced with engineered fill. This will remove the tree setback restrictions for the buildings 1 and 2.
- Based on the subsurface conditions observed in the test holes around block 3, this block is not expected to be subject to tree planting setback requirements.
- Therefore, in this case, tree planting will not be restricted by the sensitivity clay soils.
- The soil volumes provided are sufficient for a reasonable chance of tree survival. Unless otherwise noted, all new trees on City property meet the minimum soil volume requirements of the following, based on a depth of 1.5m below finished grade, and subtracting the volume of utility trenches.

- Small tree (mature height up to 7.5m) - 25m<sup>3</sup>/ minimum soil volume provided.
- Medium tree (mature height 7.5-14m) - 30m<sup>3</sup>/ minimum soil volume provided.

Where trees share a continuous greenspace:

- Two (2) small trees - 15m<sup>3</sup>/ minimum soil volume provided per tree.
- Two (2) medium trees - 18m<sup>3</sup>/ minimum soil volume provided per tree.

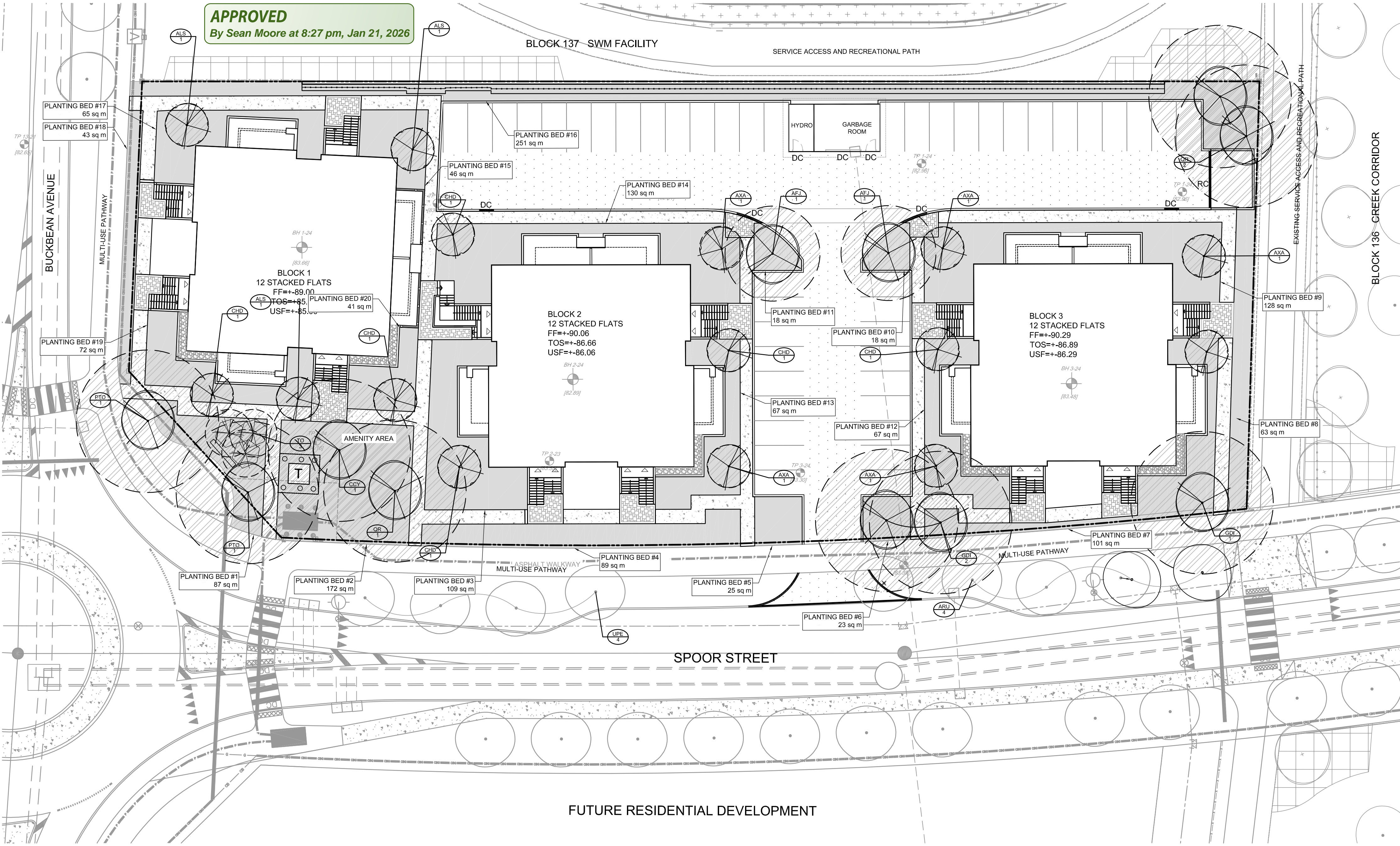
NORTH

LEGEND

- PROPERTY LIMIT
- PROPOSED CONCRETE
- OFF-SITE CONCRETE
- PROPOSED PAVERS
- PROPOSED DECIDUOUS TREE
- PROPOSED CONIFEROUS TREE
- CANOPY COVER AREA OF PROPOSED TREES AT MATURITY
- PLANTING BED SOIL
- TREES AROUND THE SITE (BY OTHERS)
- RETAINING WALL REFER TO GR
- SPECIES (SEE PLANT LIST)
- QUANTITY

CONSTRUCTION

- All general site information and conditions are compiled from Consultant field notes and plans provided by the Owner and are supplied for information purposes only. It is the responsibility of the Contractor to verify the accuracy of all the information obtained from this plan.
  - Together with all Subcontractors involved, the Contractor is to examine all surfaces or conditions relating to the work, in order to determine the acceptability of such surfaces or conditions for the work to commence. Notify the Contract Administrator in writing of conditions which could be detrimental to installation and do not commence work until instructed by the Contract Administrator. The commencement of work implies Contractor acceptance of the conditions.
  - Contractor to check and report any discrepancies before commencing work. No responsibility is borne by the Consultants for subsurface conditions.
  - Contractor to check and verify all dimensions and quantities on site and report any errors or omissions to the Consultant.
  - Contractor is responsible for all fees arising from the completion of works conveyed by these drawings, details, and specifications. Fees include but are not limited to securities, permit fees, deposits, application fees, letters of credit, or any other related funding requests.
  - Contractor to coordinate all access and protect the public and users of the site with appropriate control fence and supervision throughout the construction period, to the satisfaction of the Consultant.
  - Contract Administrator is to approve access point(s) prior to mobilization.
  - A Contractor flagman is required to direct all deliveries of machinery or materials to the site.
  - Contractor to coordinate and schedule all work with other trades and contractors. Contractor is to notify Contract Administrator of any schedule difficulties.
  - Contractor responsible for the removal and off-site disposal of all materials as required to facilitate new construction. Store all items and materials identified by the Consultant for salvage at a location on site as identified by the Consultant. Excavate and remove from site any contaminated material. Dispose all contaminated material at a licensed landfill facility. Maintain site in a clean and orderly state for the duration of construction; perform all work in accordance with the Occupational Health and Safety Act. Remove all excess materials, packaging, and debris from the site.
  - Contractor is responsible to take all necessary measures to control dust on the project site and to the satisfaction of the Contract Administrator.
  - Contractor is responsible for all layout for construction purposes.
  - Contractor is to protect all iron bars. Replace any disturbed bars by Owner at the Contractor expense.
  - The Contractor is to notify the Contract Administrator upon completion of the required works to schedule an inspection for acceptance.
- Plant material to be No. 1 Grade and is to comply with Canadian Standards for Nursery Stock (latest edition) published by the Canadian Nursery Landscape Association.
  - Use structurally sound plant material with strong fibrous root system free of disease, defects, and injuries. Use trees with straight trunks, well and characteristically branched for species. Obtain approval from consultant of plant material at source prior to digging. All trees and shrubs to be container grown, potted, WB or B/B, as indicated on Plant List. Bare root plants are only acceptable for certain species and as approved by the Landscape Architect.
  - Plant material substitutions are not permitted without the written approval from the Consultant, with 48 hours notice, prior to shipping plant material.
  - Plant locations are schematic / approximate only. Contractor is to stake out locations on site for approval by the Landscape Architect prior to installation.
  - The illustrated number of plants shown in the Planting Plan supersedes the estimated number in the Plant List. Contractor to report any discrepancies to the Landscape Architect prior to installation. Contractor will assume full responsibility if the Landscape Architect is not notified.
  - Ensure trees are thoroughly watered following planting. Monitor material and ensure adequate moisture until acceptance.
  - In heavy clay or poorly drained soils, set root ball with root collar 75-100mm higher than finished grade.
  - Approved topsoil depths are as follows:
    - Plant Beds - 450mm continuous depth. Applies to shrubs, perennials, vines, and groundcovers.
    - Sod/ Seed Areas - 100mm depth.
    - Reforestation - 300mm depth.
  - Sod to be No. 1 Kentucky Bluegrass Sod grown from minimum mixture of 3 Kentucky Bluegrass cultivars. Quality and source are to comply with Canadian Standards for Nursery Stock, Section 17, (latest edition) published by the Canadian Nursery Landscape Nursery Landscape Association.
  - Install a 1.2m sod strip adjacent to all hard surfaces. Note, sod is not typically graphically shown on plans.
  - Apply the following mineral fertilizer unless soil tests show other requirements:
    - Plant Beds - (8-32-16), i.e. 8% Nitrogen, 32% Phosphorus, 16% Potash per manufacturer specifications.
    - Sod Areas - (8-32-16), i.e. 8% Nitrogen, 32% Phosphorus, 16% Potash at a rate of 350kg/ha.
  - Where applicable, for any plant areas with a mix of species/ cultivars notes, Contractor is to cluster like plants in groups of 3-5 and evenly distribute these in the noted area.



NOTE:  
THE POSITION OF ALL POLE LINES, CONDUITS,  
WATERMANS, SEWERS AND OTHER  
UNDERGROUND AND OVERGROUND UTILITIES AND  
STRUCTURES IS NOT NECESSARILY SHOWN ON  
THE CONTRACT DRAWINGS, AND WHERE SHOWN,  
THE ACCURACY OF THE POSITION OF SUCH  
UTILITIES AND STRUCTURES IS NOT GUARANTEED.  
BEFORE STARTING WORK, DETERMINE THE EXACT  
LOCATION OF ALL SUCH UTILITIES AND  
STRUCTURES AND ASSUME ALL LIABILITY FOR  
DAMAGE TO THEM.

Owner:  
Uniform Developments  
117 Centopente Drive, #300  
Nepean, ON K2G 5X3  
Phone: 613.225.0770

Engineer:  
Novatech Engineers, Planners  
& Landscape Architects,  
240 Michael Cowpland Drive,  
Ottawa, ON, K2M 1P6  
Phone: 613.254.9643

Architect  
Hobin Architecture INC.  
63 Famille Street,  
Ottawa, ON K1S 3K7  
Phone: 613.236.7200

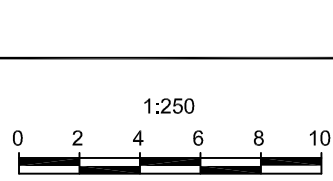
Surveyor:  
Annis, O'Sullivan, Vollebakk Ltd.  
14 Concourse Gate, Suite 500  
Nepean, ON K2E 7S6  
Phone: 613.727.0850

DISCLAIMER:  
The elements on this plan illustrate the design intent  
and general constructability of the proposed  
landscape which will support the associated  
development. This is to demonstrate how the canopy  
cover, urban design, health, and climate change  
objectives of the Official Plan will be met through tree  
planting and site design. This drawing is for City  
review only and is not intended for construction. Final  
detailed design and construction documentation is to  
be provided with certified 'Issued for Construction'  
drawings and specifications prior to construction.

No.	REVISION	DATE	BY
4.	REVISED PER FORMAL REVIEW COMMENTS	DEC 1/25	SC
3.	REVISED PER FORMAL REVIEW COMMENTS	AUG 14/25	SC
2.	REVISED PER COMPLETENESS REVIEW COMMENTS	MAY 09/25	SC
1.	ISSUED FOR SITE PLAN APPLICATION	MAR 21/25	SC

SCALE

1:250



DESIGN

SC

CHECKED

SC

DRAWN

TB

CHECKED

SC

APPROVED

SC

FOR REVIEW ONLY



NOVATECH  
Engineers, Planners & Landscape Architects  
Suite 200, 240 Michael Cowpland Drive  
Ottawa, Ontario, Canada K2M 1P6  
Telephone: (613) 254-9643  
Facsimile: (613) 254-5867  
Website: www.novatech-eng.com

LOCATION  
COPPERWOOD FLATS, 1101 SPOOR ST, KANATA  
STACKED APARTMENTS - BLOCK 125

DRAWING NAME  
CANOPY COVER AND SOIL PLAN

PROJECT No.  
122144

REV  
REV # 4

DRAWING No.  
122144-125-L3