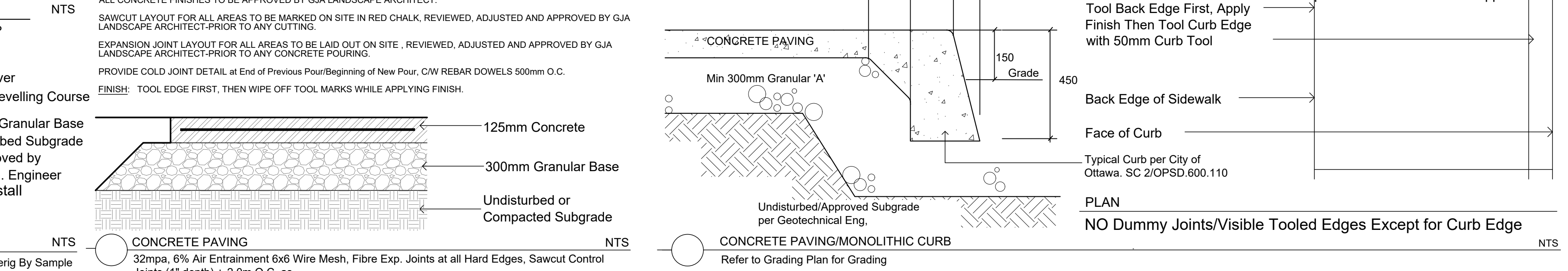
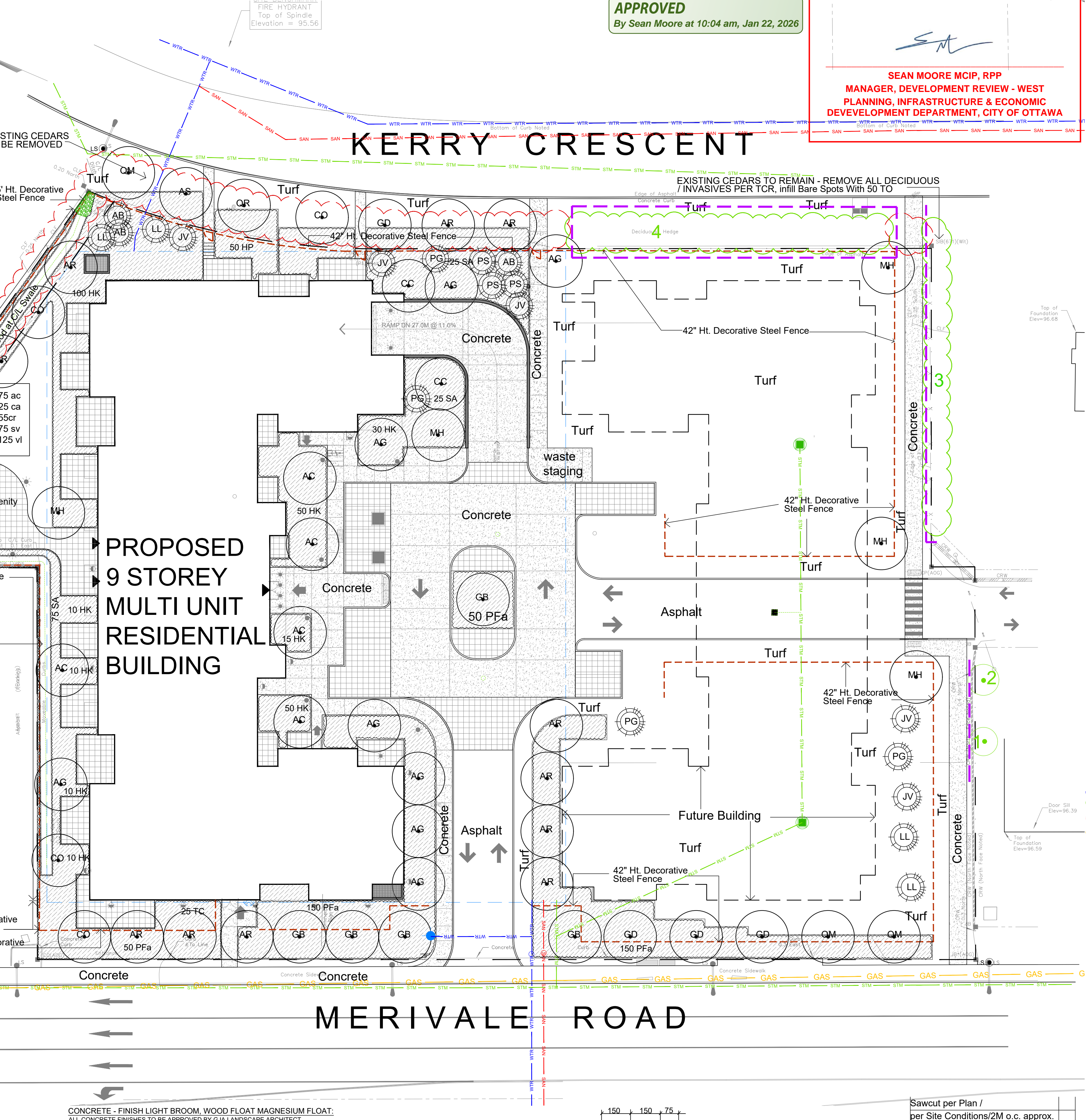
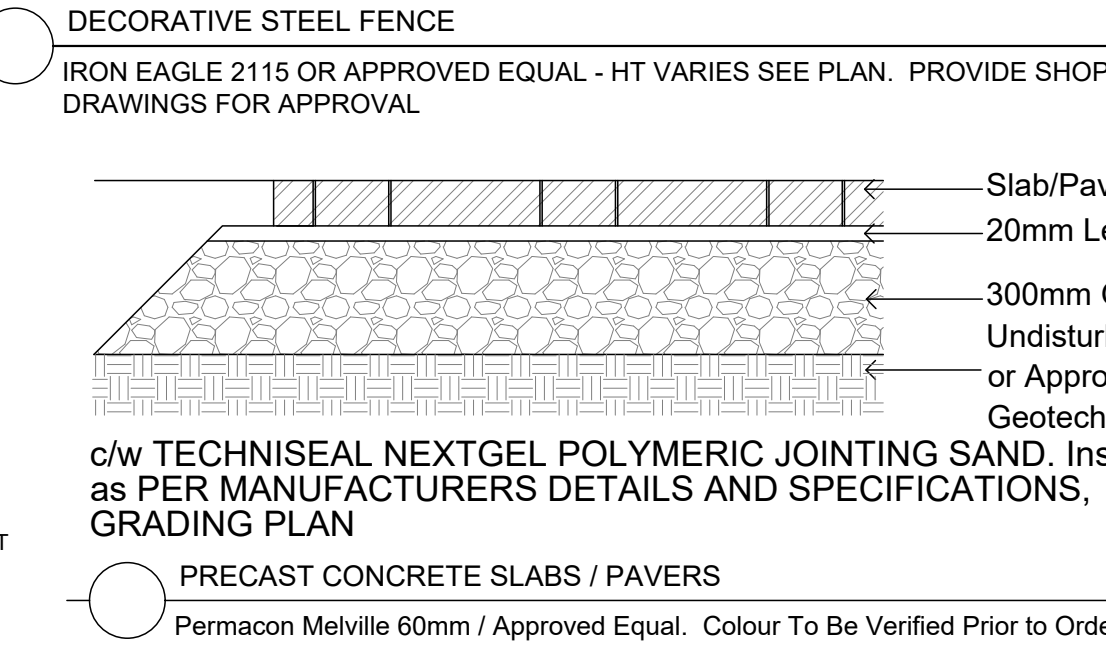
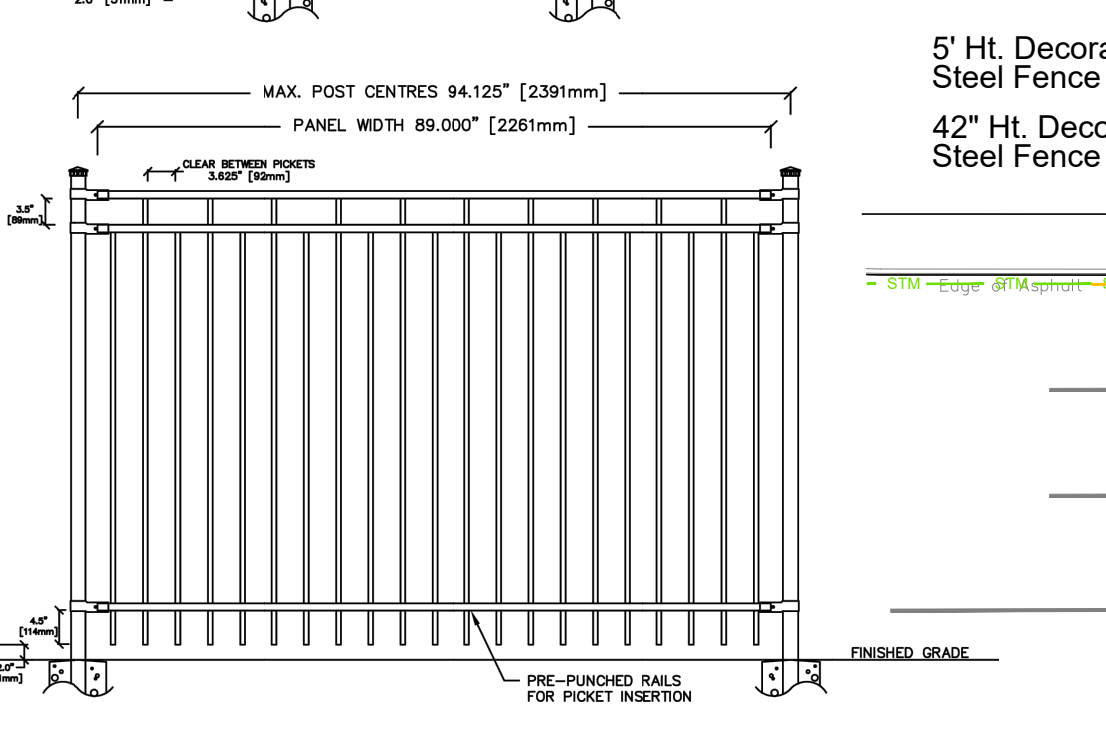
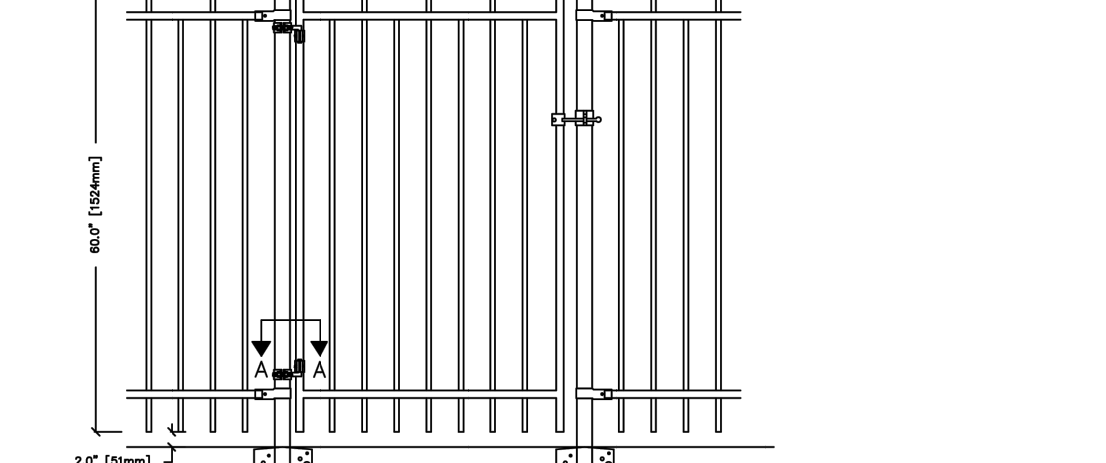
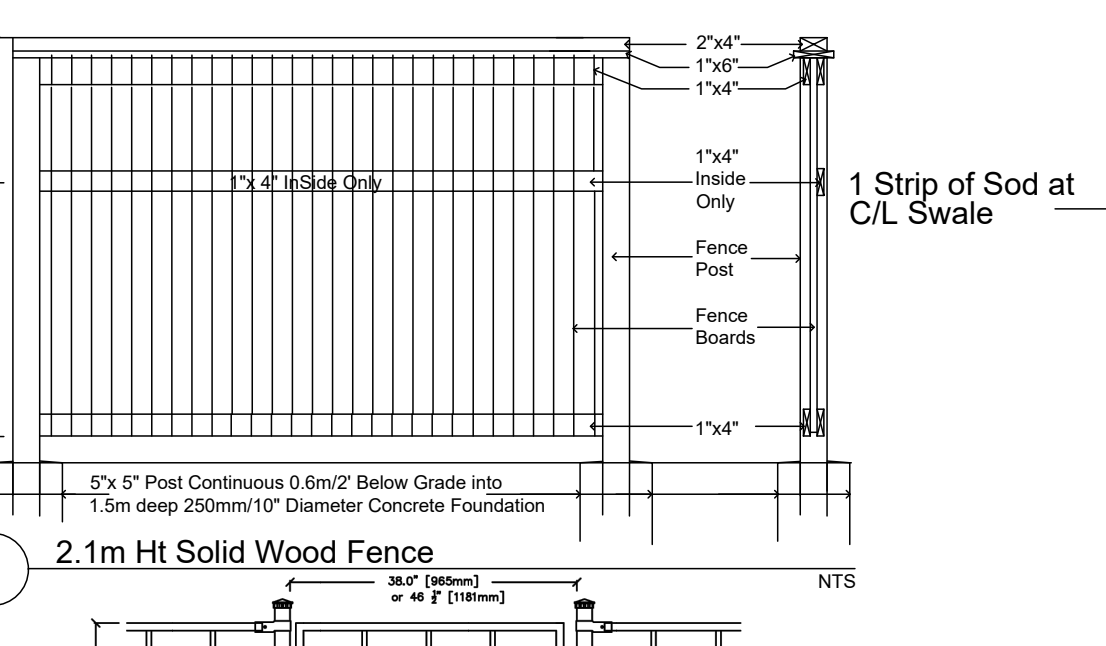
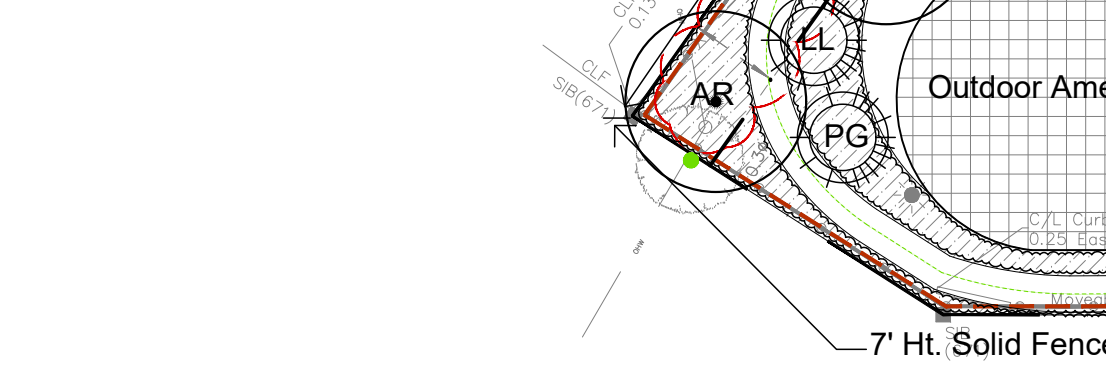
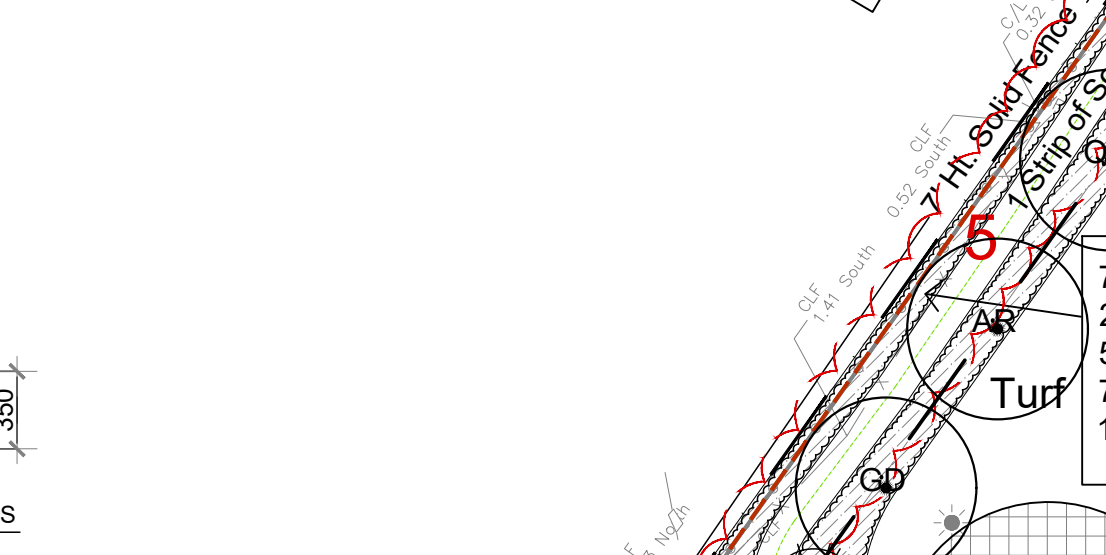
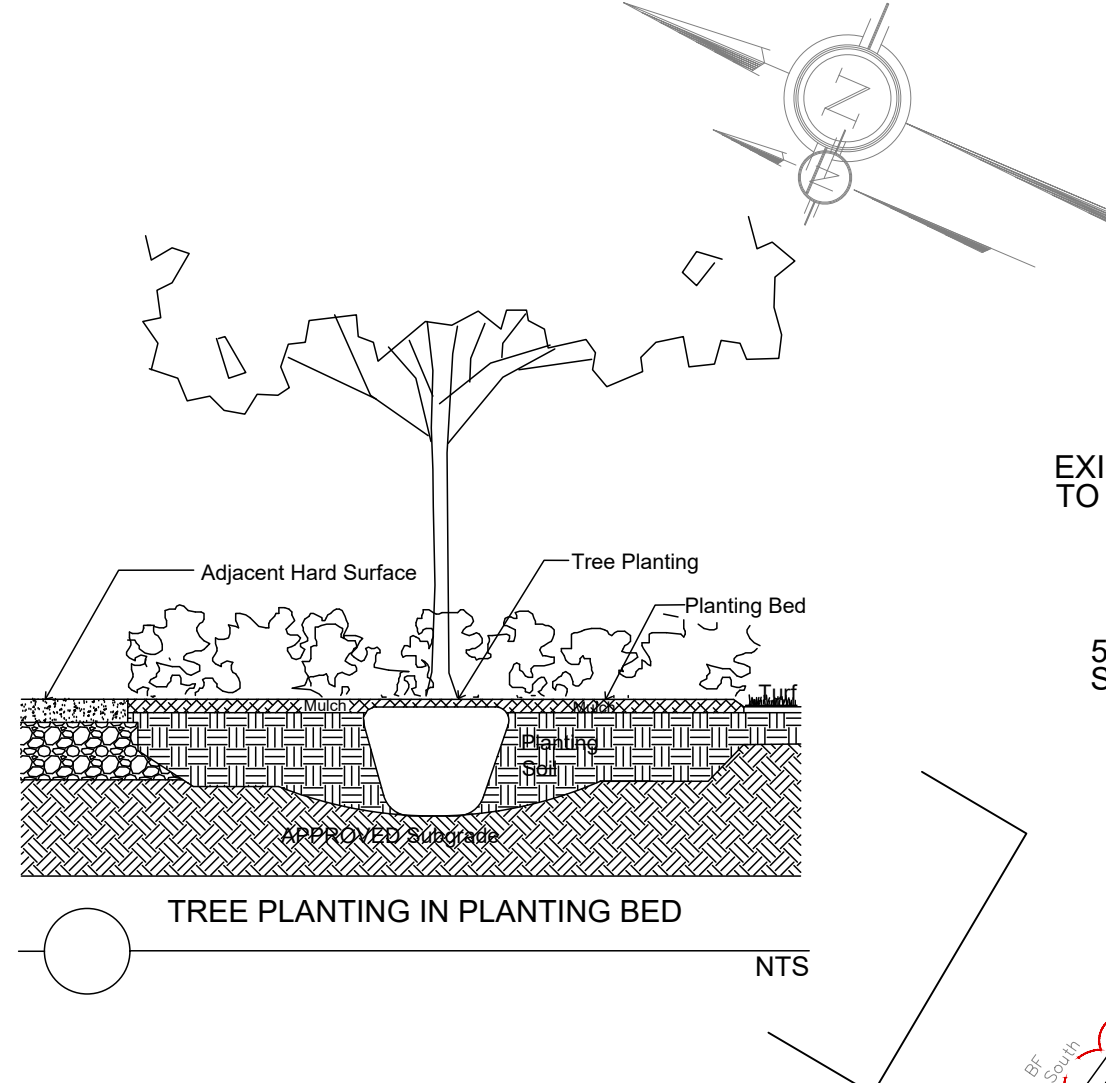
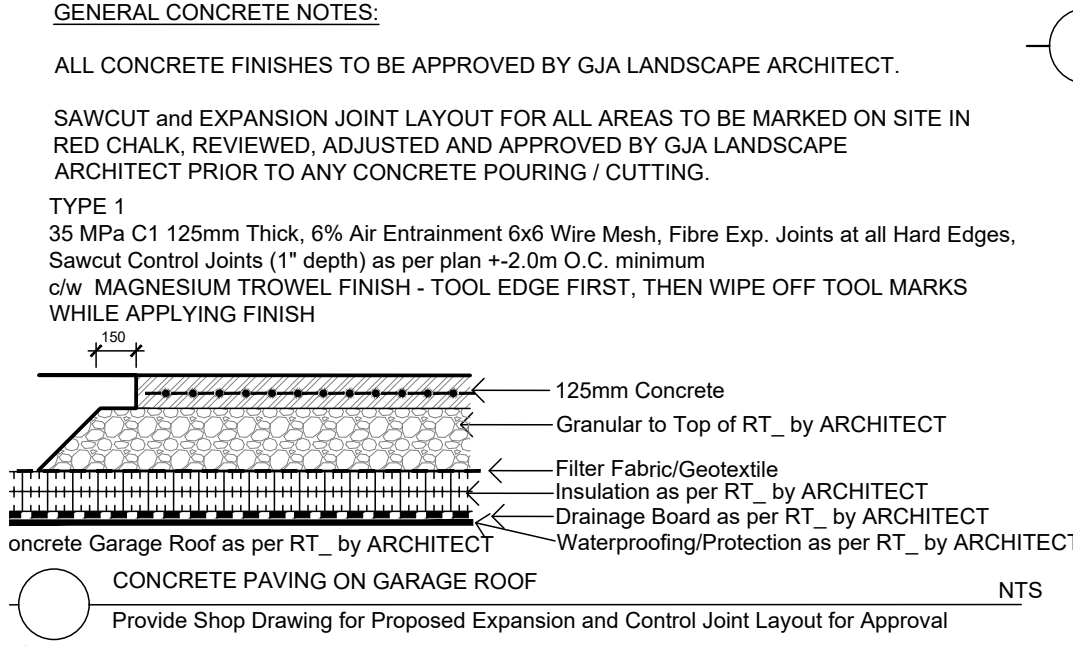


TREES						
Code	Qty.	Botanical Name	Common Name	Size	Condition	
AC	5	Amenchler canadensis	Serviceberry	50mm cal	B + B specimen	
AG	5	Acer glabrum	Ohio Buckeye	50mm cal	B + B specimen	
AR	12	Acer rubrum	Red Maple	70mm cal	B + B specimen	
AS	1	Acer saccharum	Sugar Maple	60mm cal	B + B specimen	
CD	4	Celtis occidentalis	Common Hackberry	60mm cal	B + B specimen	
CC	2	Crataegus crus-galli 'Inermis'	Thornless Cockspur Hawthorn	60mm cal	B + B specimen	
GB	5	Ginkgo biloba	Maidenhair Tree	70mm cal	B + B specimen	
GD	5	Gymnocladus dioica	Kentucky Coffee Tree	60mm cal	B + B specimen	
MH	5	Malus 'Harvest Gold'	Harvest Gold Crabapple	60mm cal	B + B specimen	
QM	3	Quercus macrocarpa	Burr Oak	70mm cal	B + B specimen	
QR	2	Quercus rubra	Red Oak	70mm cal	B + B specimen	
AB	5	Abies balsamea	Balsam Fir	2.0m Ht.	B + B specimen	
IV	5	Juniperus virginiana	Eastern Red Cedar	1.5m Ht.	B + B specimen	
LL	5	Larix laricina	Eastern Larch / Tamarack	2.0m Ht.	B + B specimen	
PS	5	Pinus strobus	White Pine	1.5m Ht.	B + B specimen	
PS	3	Pinus strobus	White Pine	1.5m Ht.	B + B specimen	

SHRUBS					
Code	Qty.	Botanical Name	Common Name	Size	Condition
cc	75	Ammanniacal canadensis	Serviceberry	100cm Ht.	Pot
cc	35	Cornus alternifolia	Pagoda Dogwood	80cm Ht.	Pot
cc	35	Cornus racemosa	Grey Dogwood	100cm Ht.	Pot
HK	300	Hypericum kalmianum	St. John's Wort	40cm Ht.	Pot
HK	50	Hypericum prolificum	Hypericum St. John's Wort	40cm Ht.	Pot
lv	75	Syringa vulgaris alba	White Common Lilac	125cm Ht.	Pot
cl	125	Viburnum lentago	Nannyberry	125cm Ht.	Pot
fls	400	Hamamelis florida 'Abbotwood'	Abbotwood Potentilla	60cm Ht.	Pot
SA	13	Spiraea alba	Meadowweet	125cm Ht.	Pot
TC	25	Taxus canadica 'Monroie'	Emerald Spreader Yew	30cm spr	Pot
CDL	500	Salix cordata	Local Yellow Willow	30cm spr	Pot/Bk
EXTRA MATERIAL NOT SHOWN ON PLAN TO BE DISTRIBUTED AT DISCRETION OF GJA INC					
Qty.	Botanical Name	Common Name	Condition		
25	Calamagrostis acutiflora 'Overdam'	Feather Reed Grass	9cm Pot		
50	Imperata cylindrica 'Red Baron'	Japanese Blood Grass	9cm Pot		
25	Echinacea purpurea	Purple Coneflower	9cm Pot		
175	Geranium macrorrhizum	Bicolor Geranium	9cm Pot		
150	Geranium polsterianum 'Garnet'	Roseanne Geranium	9cm Pot		
100	Parthenocissus quinquefolia	Virginia Creeper	9cm Pot		
55	Panicum virgatum	Switch Grass	9cm Pot		
50	Pinus mugo var. pumilio	Mugo Pine	30cm Pot		
50	Arctostaphylos Uva Ursi	Bearberry	30cm spr	Pot	
25	Rosa palustris	Swamp Rose	50cm Ht.	Pot	
15	Syringa vulgaris alba	Bowdoin Rose	60cm Ht.	Pot	
25	Spiraea bumalda 'Dart's Red'	Dart's Red Spirea	50cm Ht.	Pot	
35	Spiraea bumalda 'Anthony Waterer'	Anthony Waterer Spirea	60cm Ht.	POT	



Drawing Remains the Property of/Copyright Reserved by Gino J. Aiello Landscape Architect. Do Not Use or Reproduce Without Approval of Gino J. Aiello.

**NOT** To Be Used For Construction **Unless** indicated by Revision: **"FOR LANDSCAPE CONSTRUCTION".**

**Contractor is Responsible** for Verification of Site Locations of all Utilities. Report any Discrepancies Between Site and Drawing Immediately to Gino J. Aiello. Do NOT Proceed Until Clarified.

TURF AREAS TO BE SOD C/W 150MM DEPTH TOPSOIL ON APPROVED SUBGRADE | SOD TO BE #1 GRADE TURFGRASS NURSERY SOD per NSGA - Fine Fescue/Kentucky Bluegrass Sod | PLANTING MIX TO BE APPROVED BY LANDSCAPE ARCHITECT | PLANT MATERIAL TO MEET CNLA STANDARDS/BE APPROVED BY LANDSCAPE ARCHITECT PRIOR TO PLANTING | ALL MATERIALS & WORK TO BE MAINTAINED UNTIL FINAL ACCEPTANCE, (MOWING TURF, WEEDING BEDS, WATERING TURF & PLANTS) & INCLUDE 1 YEAR WARRANTY FROM DATE OF FINAL ACCEPTANCE | PROVIDE WATERING OF ALL PLANT MATERIAL AS REQUIRED FOR PROPER ESTABLISHMENT, UNTIL END OF WARRANTY PERIOD | REFER TO CIVIL ENGINEER'S DRAWING FOR ELEVATIONS / GRADING |

The Landscape Plan is to be read in conjunction with the grading, servicing, site and survey plan | Bare root material to be planted in season only | All plant material locations to be staked on site by the landscape contractor and checked by the landscape architect prior to planting | All trees to be preserved on or directly adjacent to the site will be protected | Plant material are to be installed a minimum of, 3.0m away from any part of any hydro transformer, 3.0m corridor between a fire hydrant and the curb, a 2.5m radius beside or behind a fire hydrant, 2.0m from any servicing/utility line or structure |

REFER TO TCR BY IFS

4 Existing Tree to Remain

1 Existing Tree to be Removed

Protection for Existing Trees

**LANDSCAPE PLAN LEGEND**

- Proposed Coniferous Tree
- Proposed Deciduous Tree
- Proposed Planting Bed
- Proposed Concrete
- Proposed Pedestrian Pavement
- Garage Below Grade
- Decorative Steel Fence
- FD Siamese Connection
- Fire Hydrant
- BELOW GRADE SERVICES
- REFER TO CIVIL /CUP
- U/G Water Service
- U/G Storm Service
- U/G Sanitary Service
- U/G Gas Service

4	FOURTH SUBMISSION SPC	2023 11 30
3	THIRD SUBMISSION SPC	2023 08 21
2	SECOND SUBMISSION SPC	APRIL 11 2023
1	FIRST SUBMISSION SPC	DECEMBER 23 2021
0	REVIEW / COORDINATION	OCTOBER 2021
No.	Revision	Date

Property Owner: **Katasa Groupe + Development**

301-69, rue Jean-Proulx, Gatineau Quebec, J8Z 1W2

Gino J. Aiello | landscape architect

GJA Inc.

Project: **RESIDENTIAL DEVELOPMENT**

1509 MERIVALE ROAD NEPEAN

Drawing: **Landscape Plan**

Scale: 1:250

City of Ottawa

Dwg - 18657

Sheet Number: **L1**

D07-12-21-0233