



Copyright Reserved

The Contractor shall verify and be responsible for all dimensions. DO NOT scale the drawing - any errors or omissions shall be reported to Stantec without delay.
The Copyrights to all designs and drawings are the property of Stantec. Reproduction or use for any purpose other than that authorized by Stantec is forbidden.

Legend

	EXISTING WATERMAIN
	EXISTING VALVE AND VALVE BOX
	EXISTING VALVE CHAMBER
	EXISTING REDUCER
	EXISTING FIRE HYDRANT
	EXISTING SANITARY SEWER
	EXISTING STORM SEWER
	EXISTING CATCHBASIN MANHOLE
	EXISTING CATCHBASIN
	EXISTING DEPRESSED CURB LOCATIONS
	GAS MAIN ONLY TRENCH
	PROPOSED UTILITY TRENCH
	PRIMARY HYDRO
	STREETLIGHT ONLY TRENCH
	BELL ONLY TRENCH
	CABLE ONLY TRENCH
	HYDRO TRANSFORMER
	UTILITY TRENCH ROAD CROSSING
	COMMUNITY MAILBOX LOCATION
	ROGERS GRADE LEVEL BOX/PEDESTAL
	BELL GRADE LEVEL BOX/PEDESTAL
	HYDRO METER LOCATION
	GAS METER LOCATION
	MULTI-STEM STREET TREE
	MEDIUM DECIDUOUS TREE
	STREET TREE (BY OTHERS)
	4m x 2.2m HYDRO MH

Notes

- SERVICING INFORMATION WITHIN PROPERTY LIMITS AND ADJACENT ROADS NETWORK RETRIEVED FROM IB GROUP, WATEREDGE VILLAGE AT ROCKCLIFFE PHASE 1A, DATED OCT 25, 2028
- SITE PLAN PREPARED BY KORSIAK URBAN PLANNING, DATED 2025-09-30, TITLED: SITE PLAN, DRAWING NO. A

2	ISSUED FOR THIRD SUBMISSION SPA	ZW	PM	26.01.20
1	ISSUED FOR COORDINATION	JP	PM	25.12.16
Revision		By	Appd.	YY.MM.DD

File Name:	160402127-DB	JP	PM	JP	25.03.24
		Dwn.	Chkd.	Dsgn.	YY.MM.DD

Permit-Seal



Client/Project

MATTAMY HOMES

WATEREDGE VILLAGE
BLOCK 105
OTTAWA, ON, CANADA

Title

COMPOSITE UTILITY PLAN

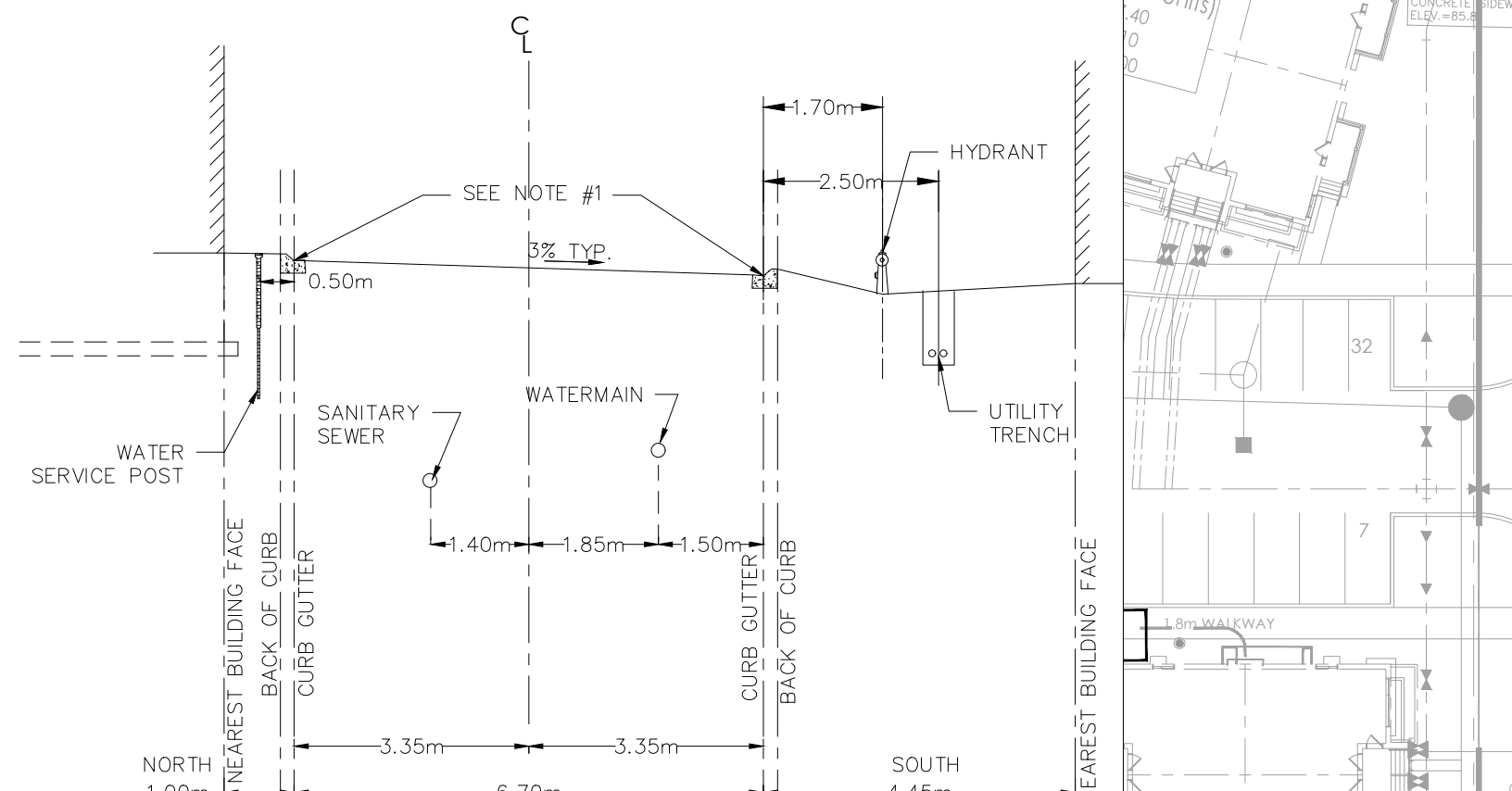
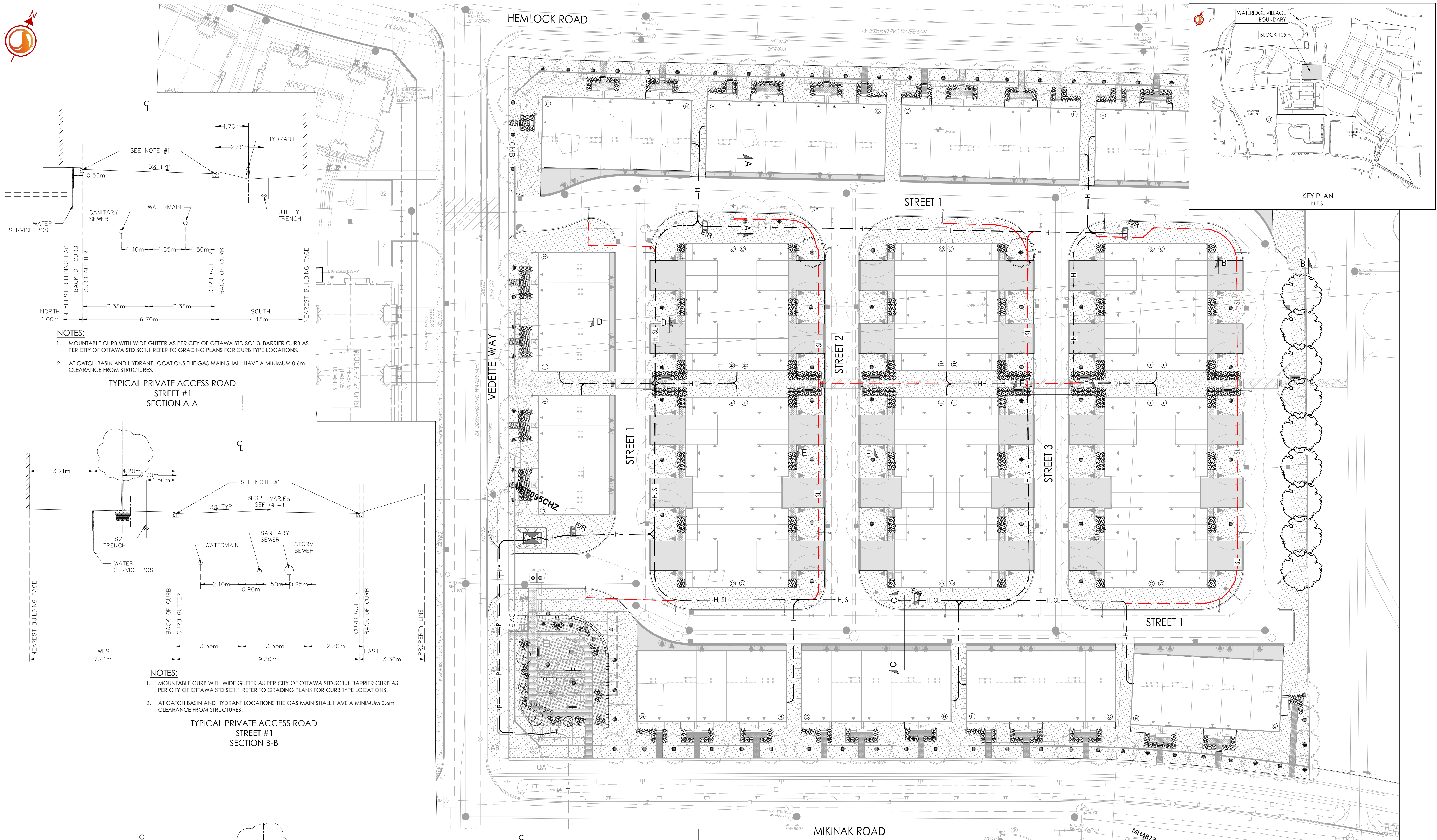
Project No.	Scale	0 4 12 20m
160402127	1:400	
Drawing No.	Sheet	Revision

CUP-1

1 of 1

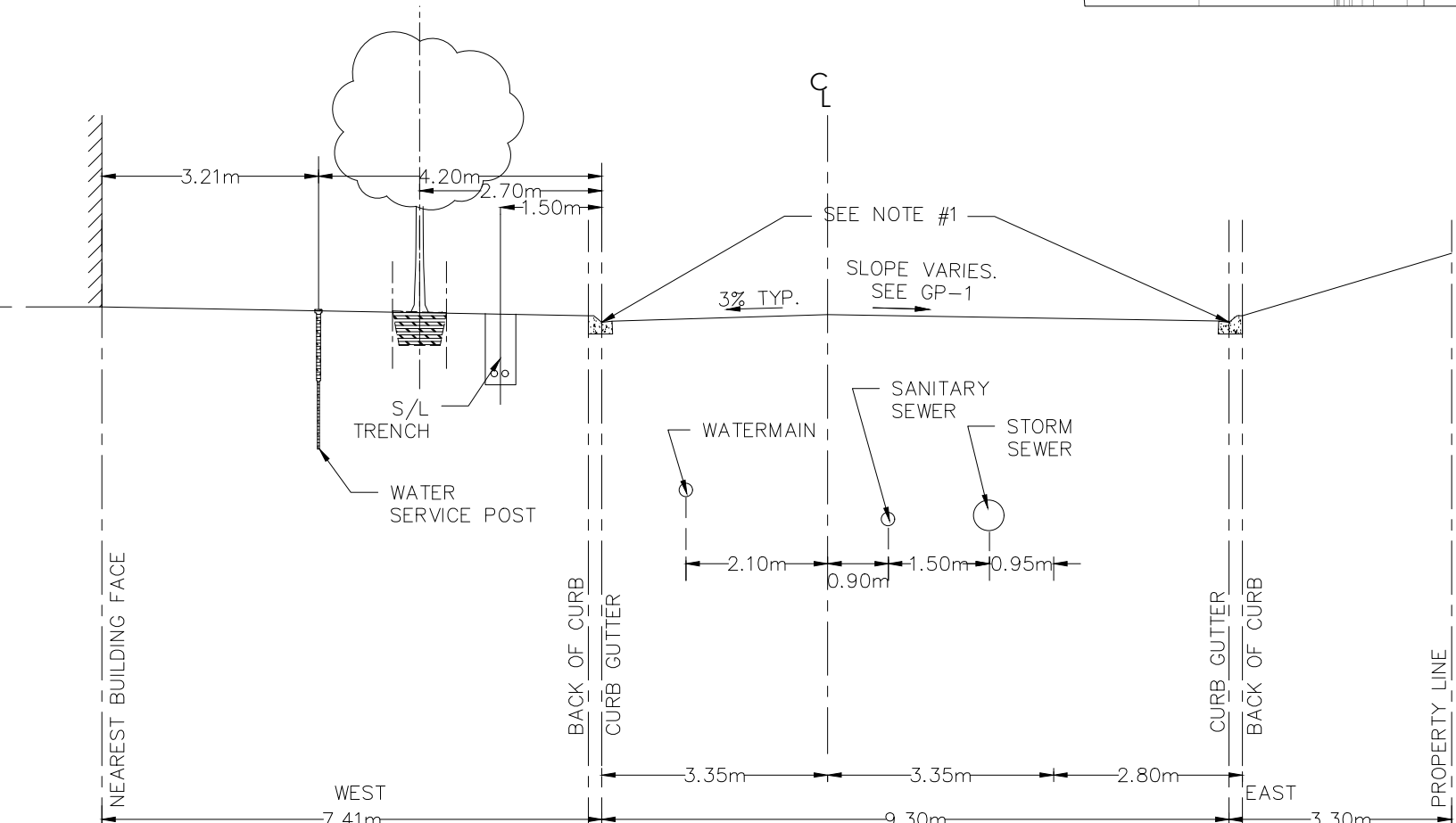
1

PLAN # 19303



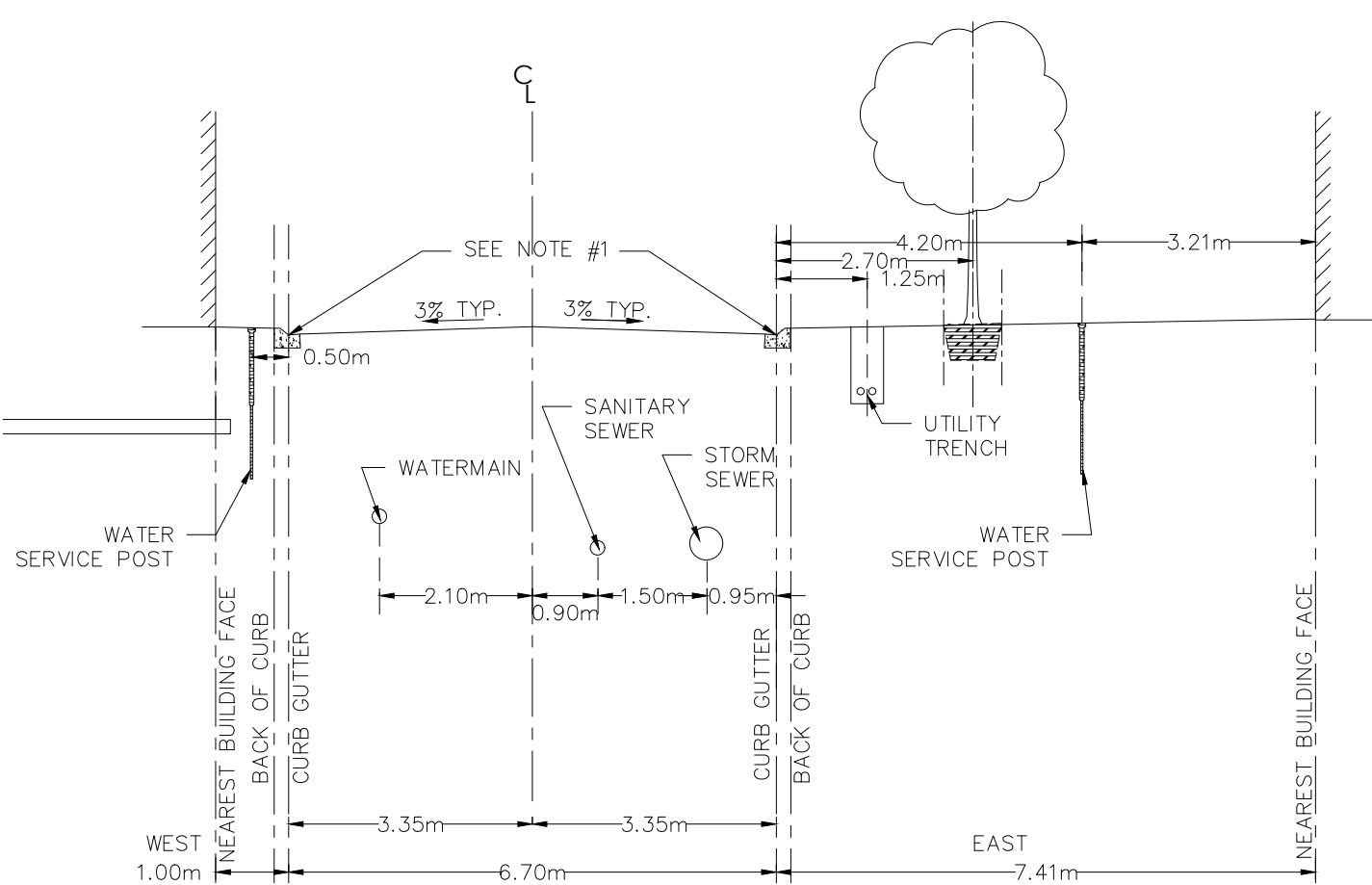
- NOTES:
- MOUNTABLE CURB WITH WIDE GUTTER AS PER CITY OF OTTAWA STD SC1.3. BARRIER CURB AS PER CITY OF OTTAWA STD SC1.1 REFER TO GRADING PLANS FOR CURB TYPE LOCATIONS.
 - AT CATCH BASIN AND HYDRANT LOCATIONS THE GAS MAIN SHALL HAVE A MINIMUM 0.6m CLEARANCE FROM STRUCTURES.

TYPICAL PRIVATE ACCESS ROAD
STREET #1
SECTION A-A



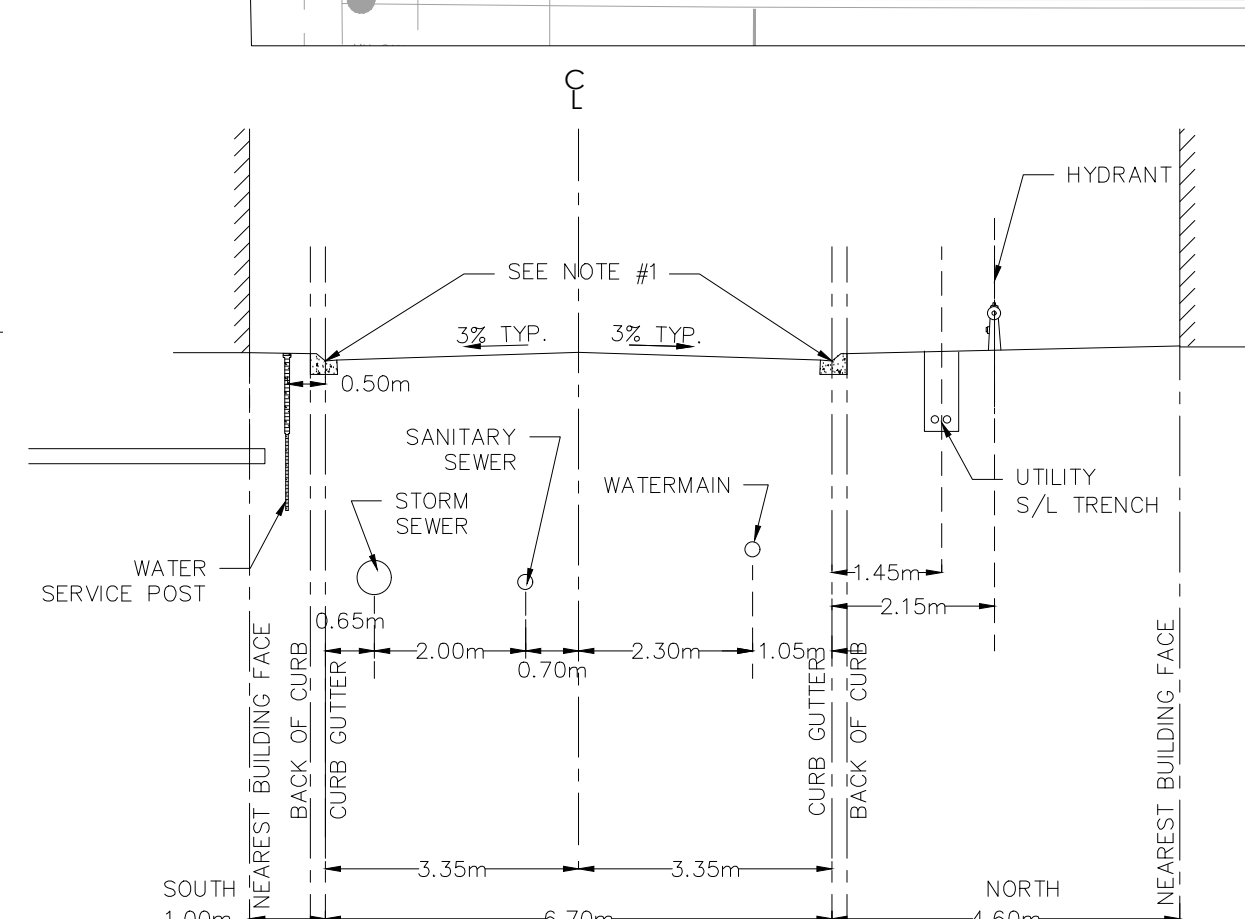
- NOTES:
- MOUNTABLE CURB WITH WIDE GUTTER AS PER CITY OF OTTAWA STD SC1.3. BARRIER CURB AS PER CITY OF OTTAWA STD SC1.1 REFER TO GRADING PLANS FOR CURB TYPE LOCATIONS.
 - AT CATCH BASIN AND HYDRANT LOCATIONS THE GAS MAIN SHALL HAVE A MINIMUM 0.6m CLEARANCE FROM STRUCTURES.

TYPICAL PRIVATE ACCESS ROAD
STREET #1
SECTION B-B



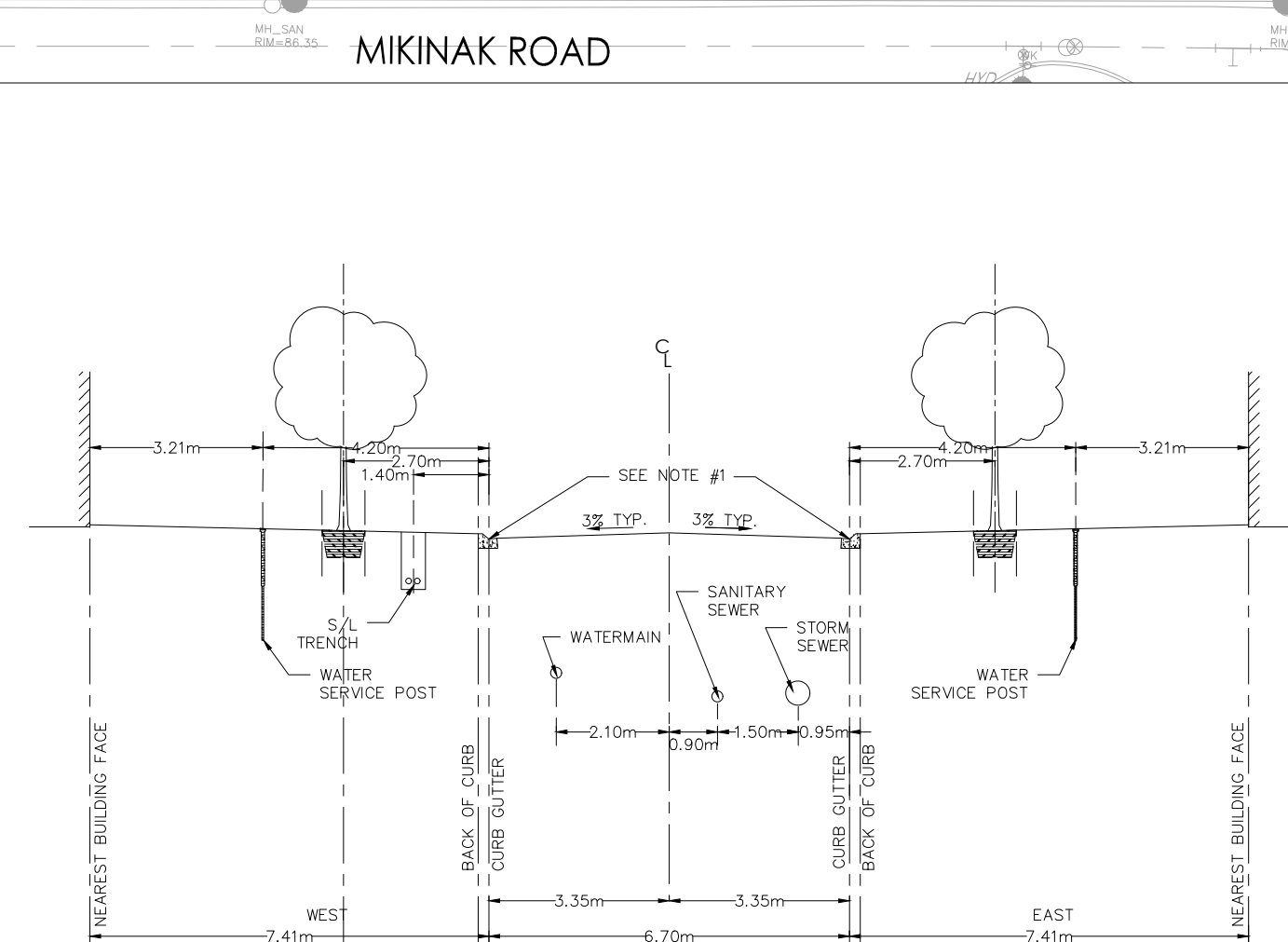
- NOTES:
- MOUNTABLE CURB WITH WIDE GUTTER AS PER CITY OF OTTAWA STD SC1.3. BARRIER CURB AS PER CITY OF OTTAWA STD SC1.1 REFER TO GRADING PLANS FOR CURB TYPE LOCATIONS.
 - AT CATCH BASIN AND HYDRANT LOCATIONS THE GAS MAIN SHALL HAVE A MINIMUM 0.6m CLEARANCE FROM STRUCTURES.

TYPICAL PRIVATE ACCESS ROAD
STREET #1
SECTION D-D



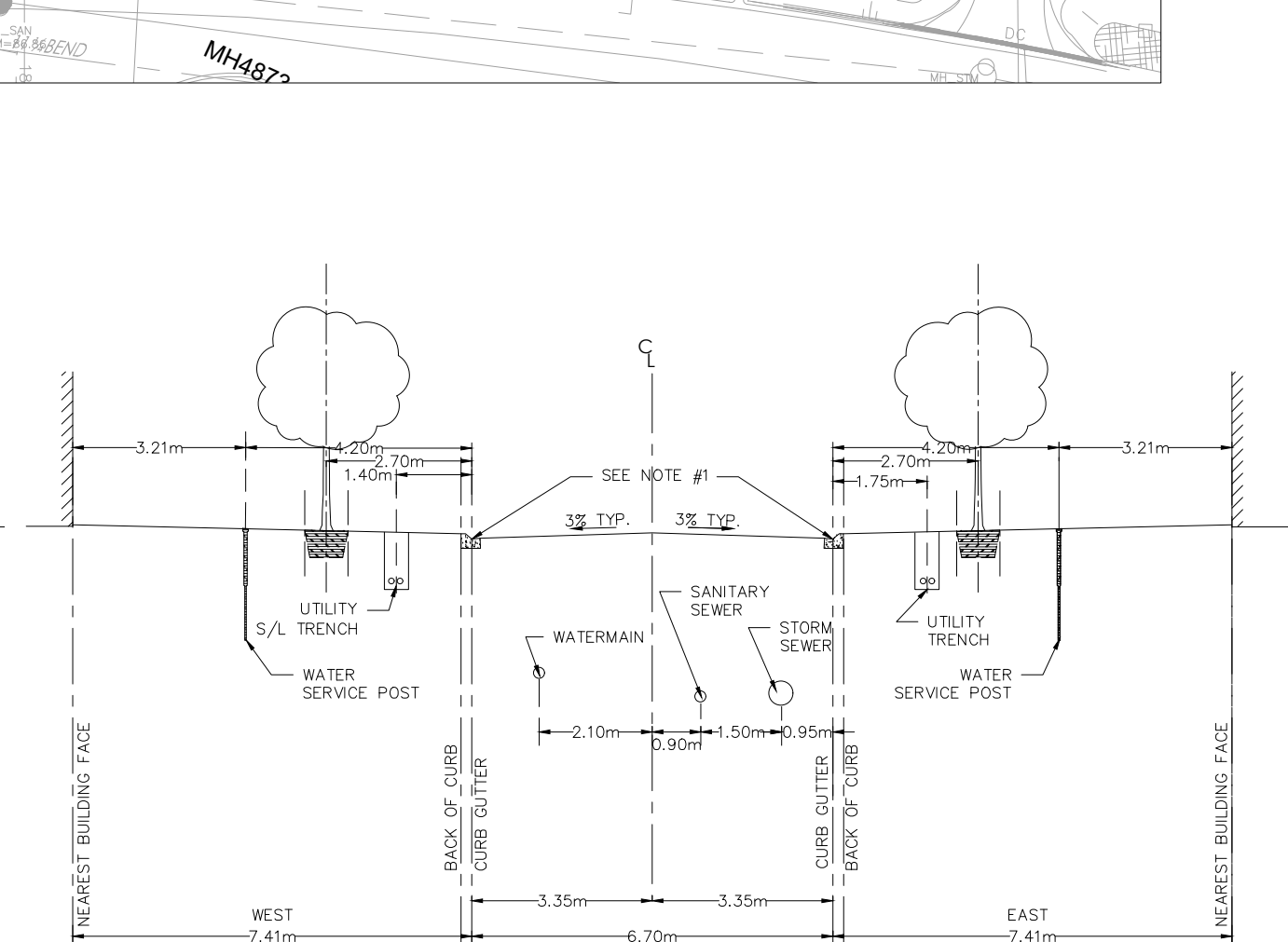
- NOTES:
- MOUNTABLE CURB WITH WIDE GUTTER AS PER CITY OF OTTAWA STD SC1.3. BARRIER CURB AS PER CITY OF OTTAWA STD SC1.1 REFER TO GRADING PLANS FOR CURB TYPE LOCATIONS.
 - AT CATCH BASIN AND HYDRANT LOCATIONS THE GAS MAIN SHALL HAVE A MINIMUM 0.6m CLEARANCE FROM STRUCTURES.

TYPICAL PRIVATE ACCESS ROAD
STREET #1
SECTION C-C



- NOTES:
- MOUNTABLE CURB WITH WIDE GUTTER AS PER CITY OF OTTAWA STD SC1.3. BARRIER CURB AS PER CITY OF OTTAWA STD SC1.1 REFER TO GRADING PLANS FOR CURB TYPE LOCATIONS.
 - AT CATCH BASIN AND HYDRANT LOCATIONS THE GAS MAIN SHALL HAVE A MINIMUM 0.6m CLEARANCE FROM STRUCTURES.

TYPICAL PRIVATE ACCESS ROAD
STREET #2
SECTION E-E



- NOTES:
- MOUNTABLE CURB WITH WIDE GUTTER AS PER CITY OF OTTAWA STD SC1.3. BARRIER CURB AS PER CITY OF OTTAWA STD SC1.1 REFER TO GRADING PLANS FOR CURB TYPE LOCATIONS.
 - AT CATCH BASIN AND HYDRANT LOCATIONS THE GAS MAIN SHALL HAVE A MINIMUM 0.6m CLEARANCE FROM STRUCTURES.

TYPICAL PRIVATE ACCESS ROAD
STREET #3
SECTION F-F