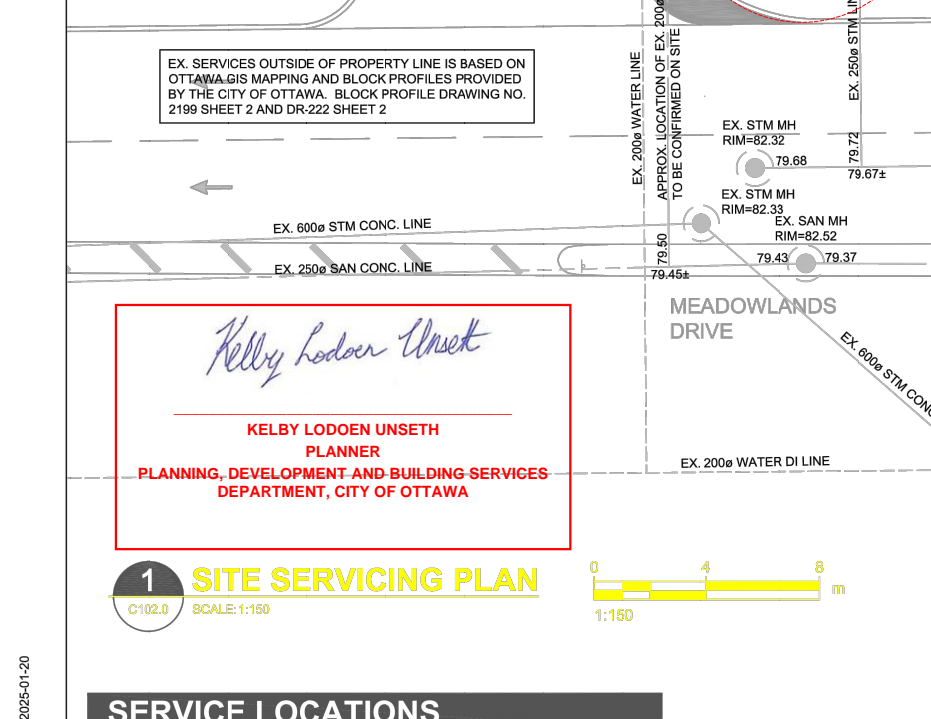
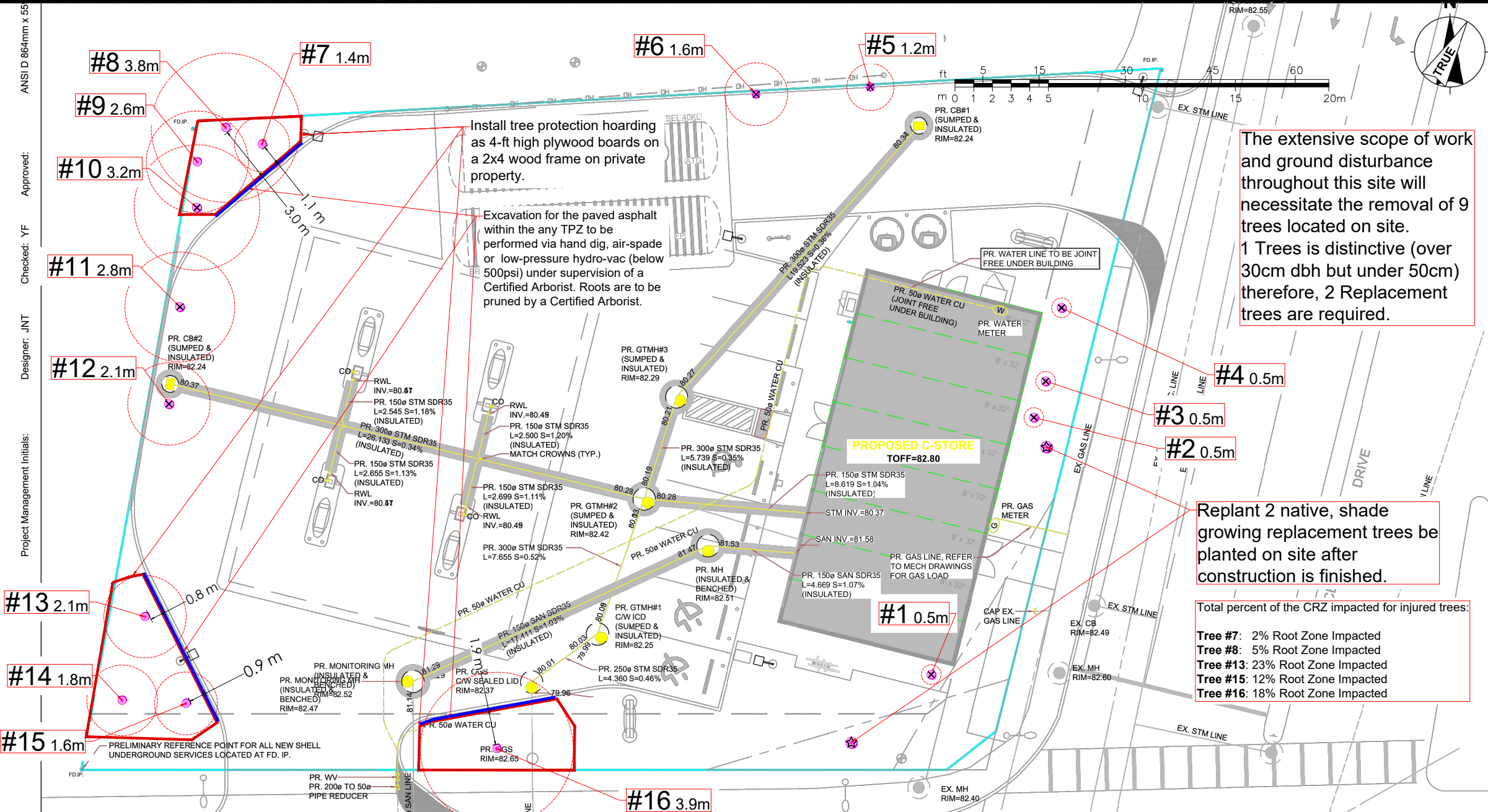


ANSI D 864mm x 55  
Approved: YF  
Checked: JNT  
Designer: JNT  
Project Management Initials:  
2025-01-20



Species	Botanical	DBH (cm) @ 1.4 m	Tree Ownership	Minimum Tree Protection Zone	Health	Structure	Overall Condition	Crown Width (m)	Deadwood (%)	Construction inside Min TPZ? (Y/N)	Impact: None, Low, Medium, High	Action	Permit required? (Y/N)	Distinctive Tree	Replacements Required
1 Forsythia	<i>Forsythia spp</i>	5	Private	0.5	Good	Good	Good	2	0	Y	High	Remove	N	N	
2 Forsythia	<i>Forsythia spp</i>	5	Private	0.5	Good	Good	Good	2	0	Y	High	Remove	N	N	
3 Forsythia	<i>Forsythia spp</i>	5	Private	0.5	Good	Good	Good	2	0	Y	High	Remove	N	N	
4 Forsythia	<i>Forsythia spp</i>	5	Private	0.5	Good	Good	Good	2	0	Y	High	Remove	N	N	
5 Juniper	<i>Juniperus species</i>	12	Private	1.2	Fair	Fair	Fair	4	25	Y	High	Remove	Y	N	
6 Juniper	<i>Juniperus species</i>	16	Private	1.6	Good	Good	Good	5	10	Y	High	Remove	Y	N	
7 Elm	<i>Ulmus species</i>	14	Private	1.4	Good	Fair	Fair	5	0	Y	Low	Injure	Y	N	
8 Elm	<i>Ulmus species</i>	38	Private	3.8	Good	Fair	Fair	8	15	Y	Low	Injure	Y	Y	
9 Honey Locust	<i>Gleditsia triacanthos</i>	26	Private	2.6	Fair	Fair	Fair	6	30	N	None	Preserve	N	N	
10 Honey Locust	<i>Gleditsia triacanthos</i>	32	Private	3.2	Fair	Good	Good	8	20	Y	High	Remove	Y	Y	2
11 Honey Locust	<i>Gleditsia triacanthos</i>	28	Private	2.8	Good	Good	Good	9	15	Y	High	Remove	Y	N	
12 Honey Locust	<i>Gleditsia triacanthos</i>	21	Private	2.1	Fair	Good	Good	9	20	Y	High	Remove	Y	N	
13 Honey Locust	<i>Gleditsia triacanthos</i>	21	Private	2.1	Good	Good	Good	7	10	Y	Low	Injure	Y	N	
14 Honey Locust	<i>Gleditsia triacanthos</i>	18	Private	1.8	Fair	Fair	Fair	5	45	N	None	Preserve	N	N	
15 Honey Locust	<i>Gleditsia triacanthos</i>	16	Private	1.6	Good	Fair	Good	7	15	Y	Low	Injure	Y	N	
16 Honey Locust	<i>Gleditsia triacanthos</i>	39	Private	3.9	Good	Good	Good	12	10	Y	None	Preserve	N	Y	

INSPECTIONS BY CONSULTING ENGINEERS  
1. THE ENGINEER WILL INSPECT ALL UNDERGROUND MECHANICAL UTILITIES PRIOR TO COVERING.  
2. SPECIFIC ITEMS OF INSPECTION WILL INCLUDE THE VISUAL INSPECTION OF THE FOLLOWING ITEMS PRIOR TO AND DURING ITS INSTALLATION BY THE CONTRACTOR.

NOTES:

- All field data have been recorded by ISA Certified Arborist Matthew Tremblay (ON-2767A)
- All tree locations are based on the site plan and/or survey supplied by the client, and field observation by the arborist.
- This plan shall be used in conjunction with the Tree Protection Action Key (TPAK). Specific information regarding tree species, condition, and protection protocols are listed therein.
- Refer to the Arborist Report prepared for this project for specific instruction regarding tree protection requirements.

PLAN KEY

- TREE RECOMMENDED FOR REMOVAL
- RETAINED TREE
- CONIFEROUS TREE FOR REMOVAL
- RETAINED CONIFEROUS TREE
- REPLACEMENT TREE
- RETAINED HEDGEROW
- HEDGEROW FOR REMOVAL
- TREE PROTECTION FENCE
- TREE PROTECTION ZONE

REVISIONS

No.	DATE	BY	REVISIONS
1	07/12/24	CG	Map #1 Current Vegetation
2	10/10/24	CG	Tree Protection Plan
3	12/5/24	MT	Tree Protection Plan

DAVEY RESOURCE GROUP  
A Division of The Davey Tree Expert Company

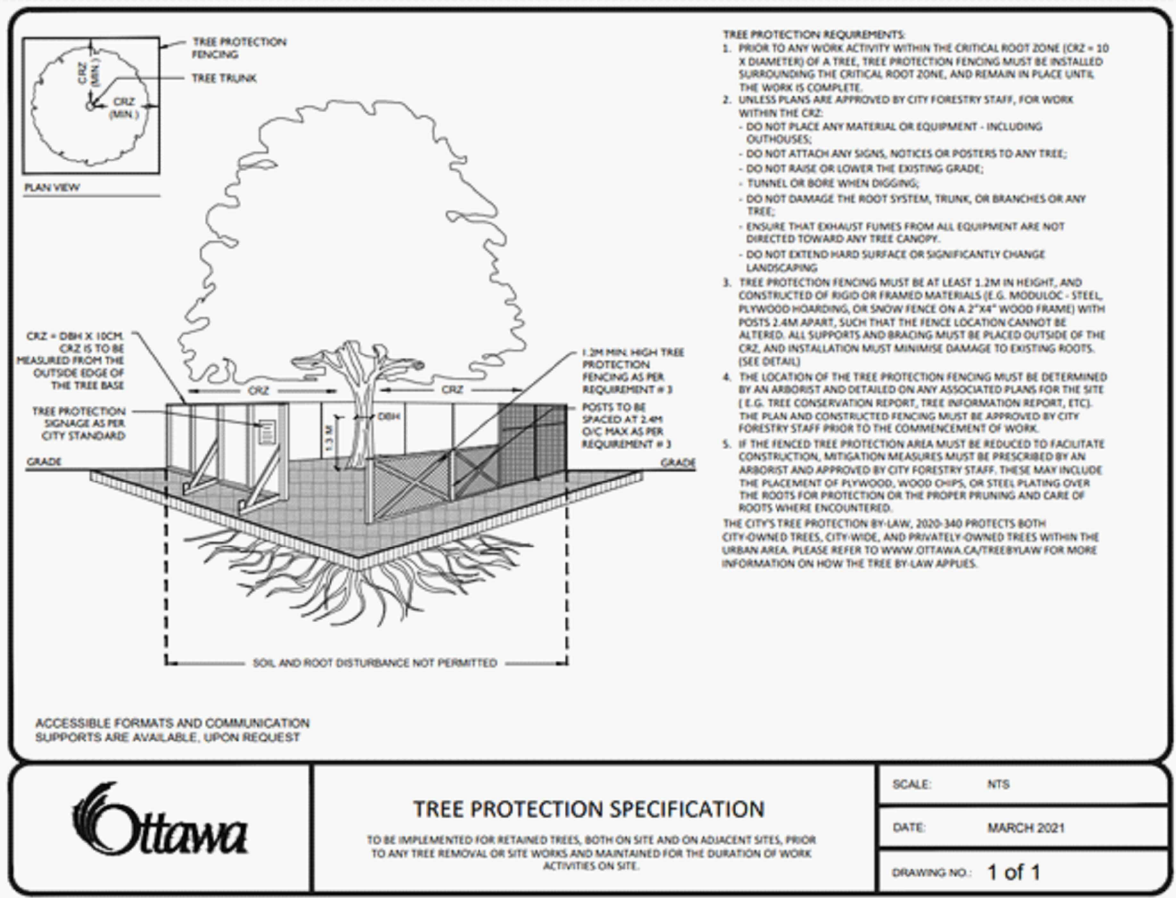
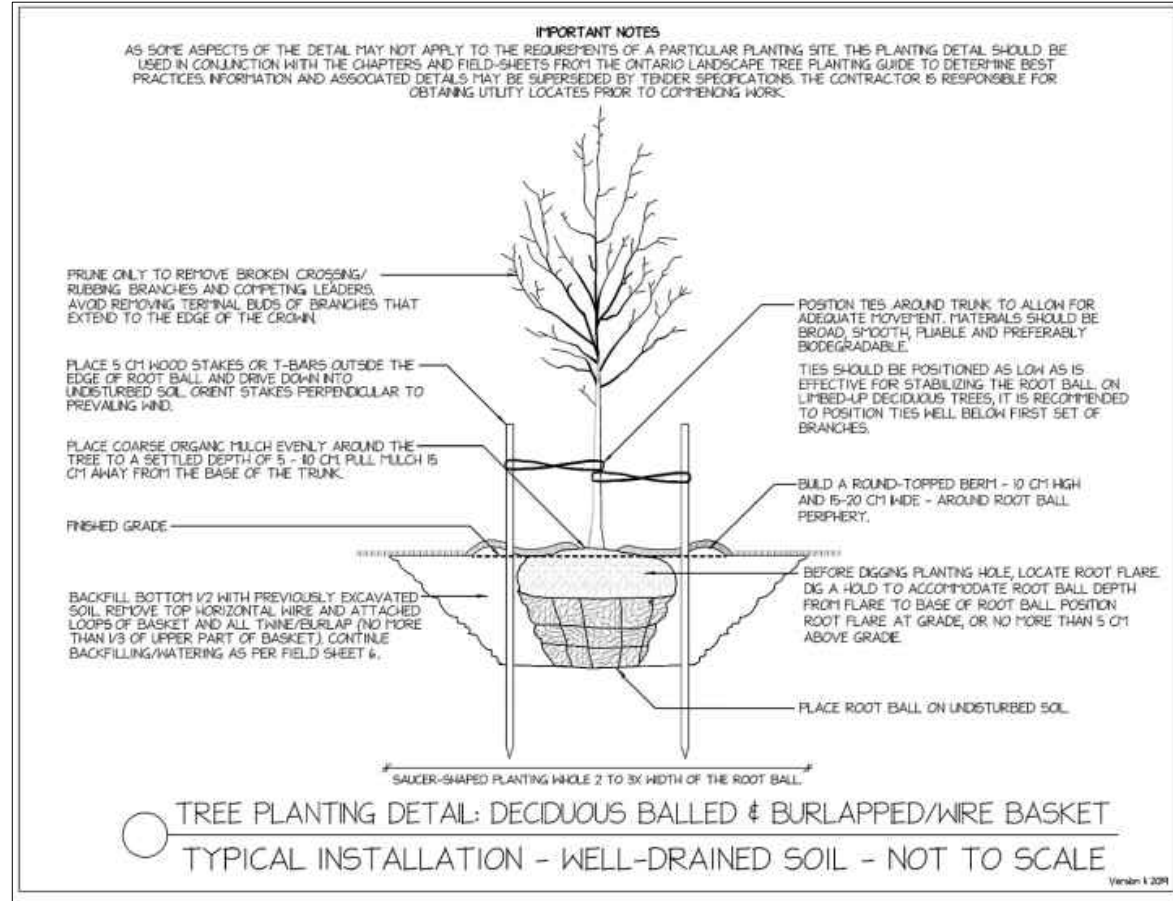
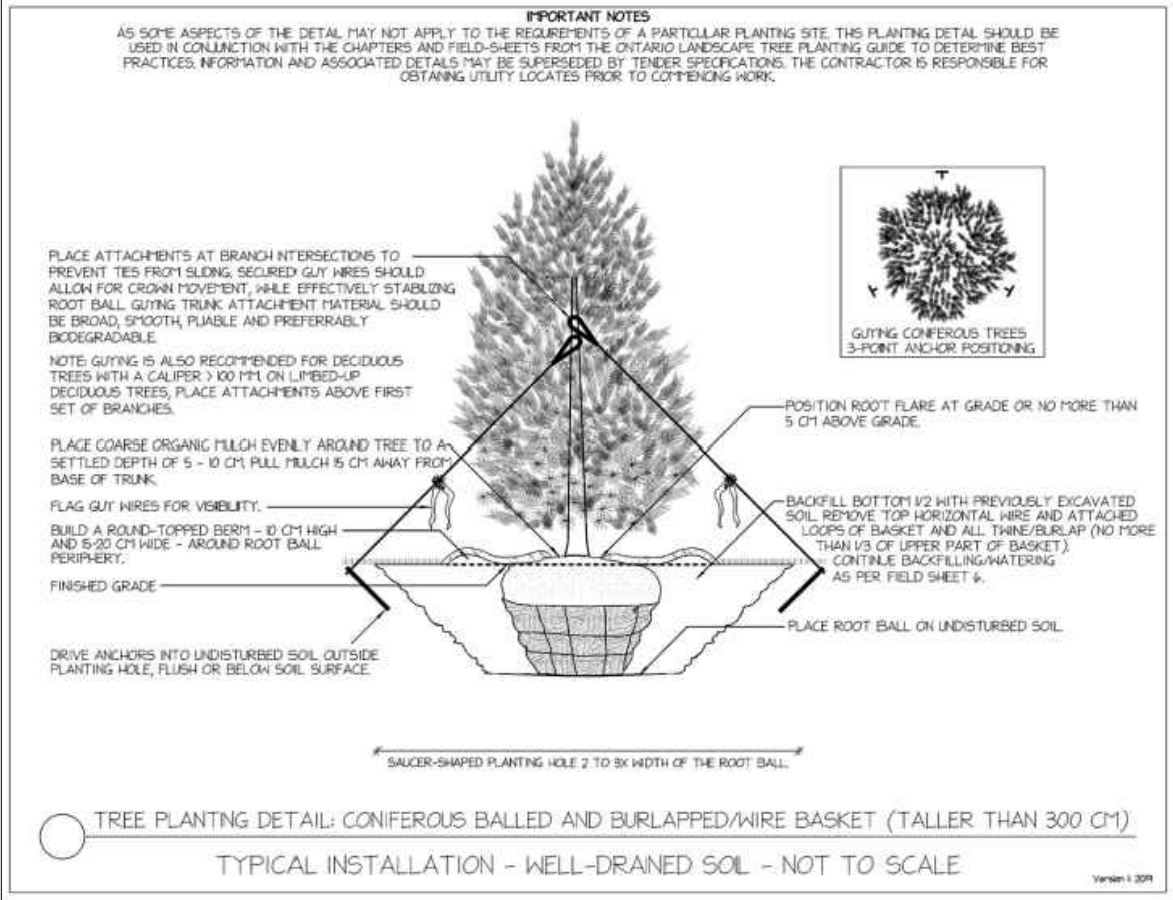
TITLE:  
Tree Conservation Report  
1440 Prince of Wales Dr,  
Ottawa, ON K2C 1N6

CLIENT:  
CTM Design Services

DRAWING NO.:  
SCALE: 1:250

JOB NO.:  
SHEET: 1 of 2





*Kelby Lodoen Unseth*

**KELBY LODOEN UNSETH**  
PLANNER  
PLANNING, DEVELOPMENT AND BUILDING SERVICES  
DEPARTMENT, CITY OF OTTAWA

- NOTES:**
- All field data have been recorded by ISA Certified Arborist Matthew Tremblay (ON-2767A).
  - All tree locations are based on the site plan and/or survey supplied by the client, and field observation by the arborist.
  - This plan shall be used in conjunction with the Tree Protection Action Key (TPAK). Specific information regarding tree species, condition, and protection protocols are listed therein.
  - Refer to the Arborist Report prepared for this project for specific instruction regarding tree protection requirements.

**PLAN KEY**

- TREE RECOMMENDED FOR REMOVAL
- RETAINED TREE
- CONIFEROUS TREE FOR REMOVAL
- RETAINED CONIFEROUS TREE
- REPLACEMENT TREE
- RETAINED HEDGEROW
- HEDGEROW FOR REMOVAL
- TREE PROTECTION FENCE
- TREE PROTECTION ZONE

No.	DATE	BY	REVISIONS
1	07/12/24	CG	Map #1 Current Vegetation
2	10/10/24	CG	Tree Protection Plan
3	12/5/24	MT	Tree Protection Plan



**TITLE:**

Tree Conservation Report  
1440 Prince of Wales Dr,  
Ottawa, ON K2C 1N6

**CLIENT:**

CTM Design Services

**DRAWING NO.:**

**SCALE:** 1:250

**JOB NO.:**

**SHEET:** 2 of 2