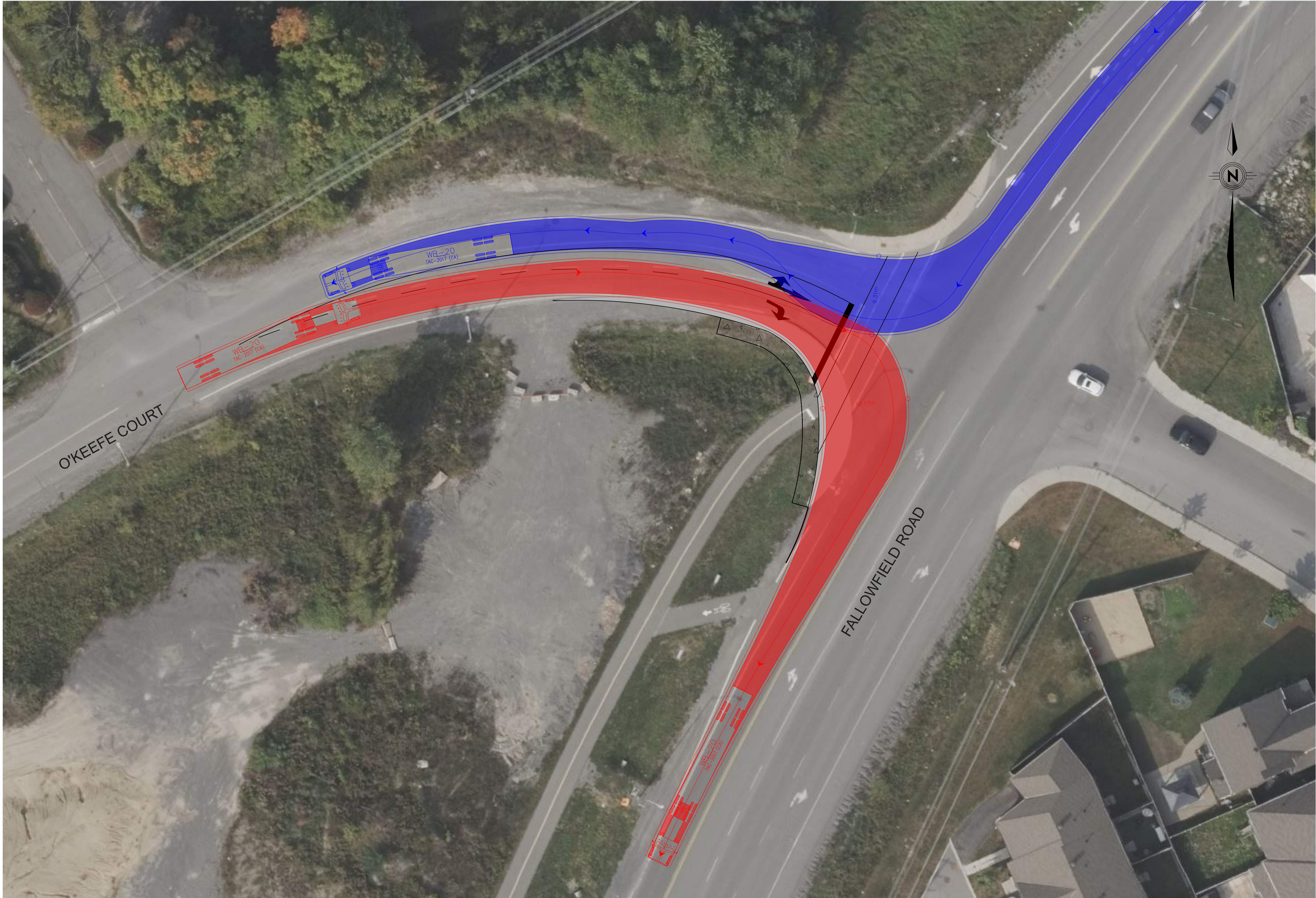


FILE #: D07-12-15-0085
PLAN #: 19335



4497 O'KEEFE COURT

ANTICIPATED ROAD WIDENING
OF O'KEEFE COURT
RIGHT TURNS

Director, Infrastructure Services

Project Manager

PARSONS

Contract No.

Dwg. No.
0

Sheet 0 of 0

Asset No.

Asset Group

Des.

Chk'd.

Dwn.

Chk'd.

Utility Circ. No.

Index No.

Const. Inspector

Scale:
0m 2.5 5 10
HORIZONTAL

NOTE: The location of utilities is approximate only, the exact location should be determined by consulting the municipal authorities and utility companies concerned. The contractor shall prove the location of utilities and shall be responsible for adequate protection from damage.

| No. | Description | By | Date (dd/mm/yy) |
|-----|-------------|----|-----------------|
| | | | 21/01/26 |
| | | | |
| | | | |
| | | | |

GENERAL NOTES:

1. ANTICIPATED ROAD WIDENING OF O'KEEFE COURT TO ACCOMMODATE TRUCK TURNING MOVEMENT.

FOR INFORMATION ONLY - NOT FOR CONSTRUCTION