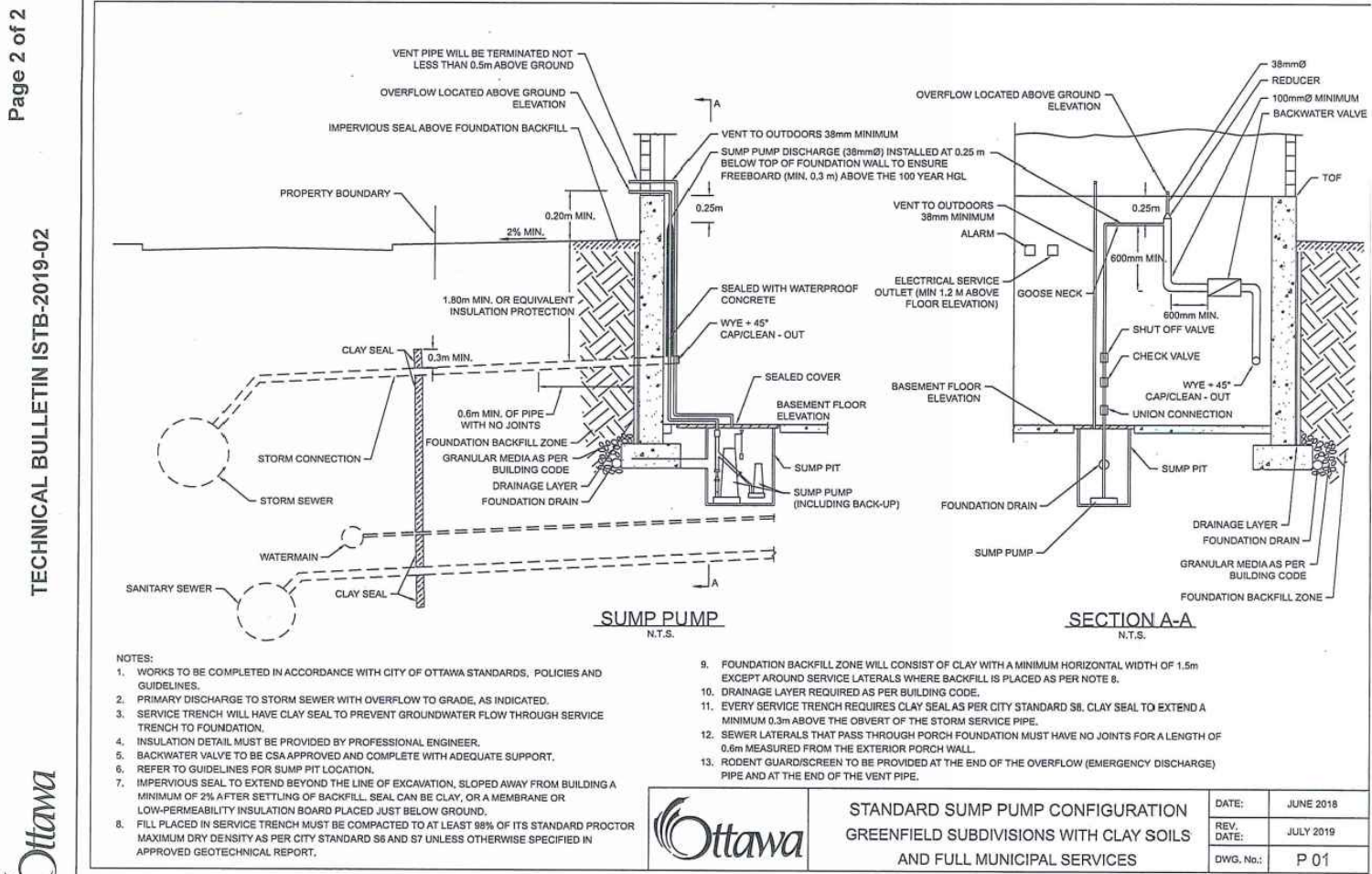
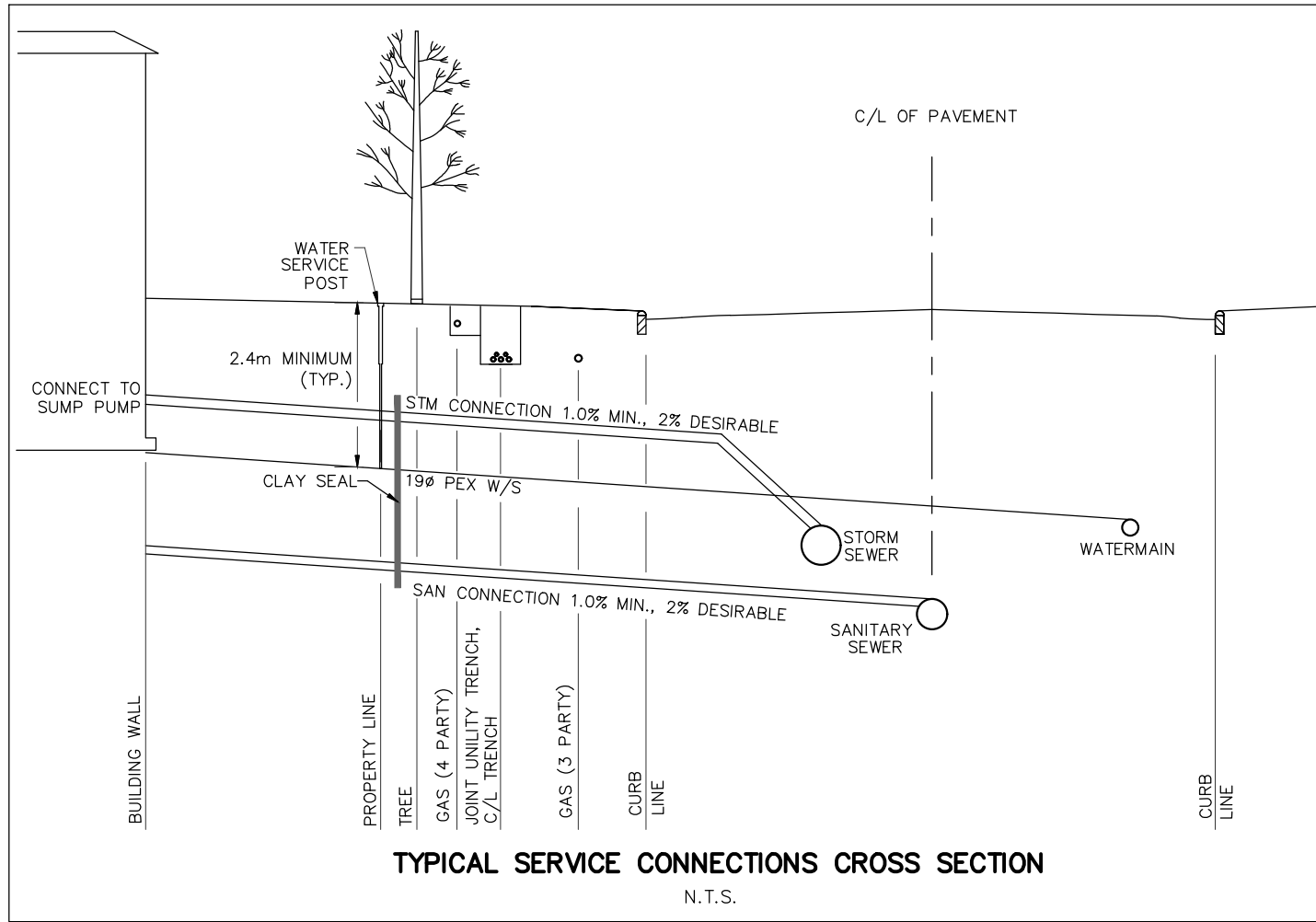


CATCHBASIN ID	OUTLET PIPE				TOP OF GRATE	GRATING COVER	INVERT	
	DIA. (mm)	TYPE	LENGTH (m)	INV. DEPTH (m)			INLET	OUTLET
CB 362	200	PVC	7.20	1.38	93.12	S19 PERFORATED	-	91.74
CB 363	200	PVC	2.39	1.38	93.12	S19 PERFORATED	-	91.74
CB 364	250	PVC	10.65	1.49	92.97	S19 PERFORATED	91.53	91.48
CB 365	200	PVC	6.10	1.38	92.97	S19 PERFORATED	-	91.59
CB 366	200	PVC	3.90	1.38	92.86	S19 PERFORATED	-	91.48
CBMH 537	250	PVC		1.83	92.86	S25 & S28.1	91.33	91.03
CBMH 619	250	PVC		1.73	92.99	S25 & S28.1	91.63	91.26
CB 369	200	PVC	4.04	1.38	92.99	S19 PERFORATED	-	91.61
CB 370	200	PVC	1.00	1.38	93.03	S19 PERFORATED	-	91.65
CB 371	200	PVC	4.85	1.38	93.03	S19 PERFORATED	-	91.65
CB 372	200	PVC	4.85	1.38	93.10	S19 PERFORATED	-	91.72
CB 373	250	PVC	1.00	1.38	93.10	S19 PERFORATED	-	91.72
CB 374	250	PVC	10.92	1.47	92.95	S19 PERFORATED	91.53	91.48
CB 375	200	PVC	5.50	1.38	92.97	S19 PERFORATED	-	91.59
CB 376	200	PVC	6.10	1.38	93.09	S19 PERFORATED	-	91.71
CB 377	250	PVC	16.74	1.46	93.09	S19 PERFORATED	91.68	91.63
CB 378	250	PVC	2.79	1.49	93.04	S19 PERFORATED	91.60	91.55
CB 379	200	PVC	6.10	1.38	93.04	S19 PERFORATED	-	91.66
CICB 380	200	PVC	6.12	1.38	93.07	S22 & S23	-	91.69
CB 381	200	PVC	11.81	1.38	92.83	S19 PERFORATED	-	91.45
CICB 383	250	PVC	10.04	1.49	93.07	S22 & S23	91.63	91.58
CB 384	200	PVC	5.29	1.38	93.04	S19 PERFORATED	-	91.66
CB 385	200	PVC	8.52	1.38	93.07	S19 PERFORATED	-	91.69
CB 386	200	PVC	3.77	1.38	93.09	S19 PERFORATED	-	91.71
CB 387	200	PVC	2.89	1.38	92.99	S19 PERFORATED	-	91.61

GERALDINE WILDMAN
MANAGER, DEVELOPMENT REVIEW SOUTH
PLANNING, DEVELOPMENT AND BUILDING SERVICES
DEPARTMENT, CITY OF OTTAWA

APPROVED
By Geraldine Wildman at 2:30 pm, Jan 09, 2026



NOT FOR CONSTRUCTION

TOPOGRAPHIC INFORMATION
TOPOGRAPHIC INFORMATION PROVIDED BY J.D. BARNES LIMITED,
PROJECT No. 16-10-127-00, SURVEY DATED APRIL 10, 2018.

LEGAL INFORMATION
SITE CONCEPT PLAN PROVIDED BY Q4A ARCHITECTS, PROJECT No. 24006-SPI,
RECEIVED ON NOVEMBER 28, 2024.

ELEVATION NOTE
ELEVATIONS SHOWN ON THIS PLAN ARE RELATED TO GEODETIC DATUM
AND ARE REFERRED TO THE PUBLISHED BENCH MARK No. 0011964U3710. ELEVATION=71.724m

9	W.L.	25-10-10	REVISED BLOCK 8 HOUSE CONNECTIONS
8	W.L.	25-09-02	REVISED PER ADS CHAMBER DESIGN
7	W.L.	25-08-15	4th SUBMISSION
6	W.L.	25-08-06	REVISED BLOCK 10 GRADING
5	W.L.	25-07-23	3rd SUBMISSION
4	W.L.	25-06-25	REVISED PER SWM DESIGN
3	W.L.	25-05-16	REVISED PER SWM DESIGN
2	W.L.	25-01-17	2nd SUBMISSION
1	X.W.	24-08-30	1st SUBMISSION
No.	BY	DATE	DESCRIPTION

PROJECT No. 24-1398

BARRHAVEN
CONSERVANCY
DEVELOPMENT
CORPORATION

BCDC EAST STACKED
CONDO SITE PLAN

120 Iber Road, Unit 103
Stittsville, ON K2S 1E9
Tel: (613) 836-0856
Fax: (613) 836-7153
www.DSEL.ca

DETAILS AND TABLE

© DSEL

DRAWN BY: M.S.	CHECKED BY: W.L.	SHEET NO.
DESIGNED BY: W.L.	CHECKED BY: C.M.	2 OF 15
SCALE: 1:500	DATE: AUGUST 2024	