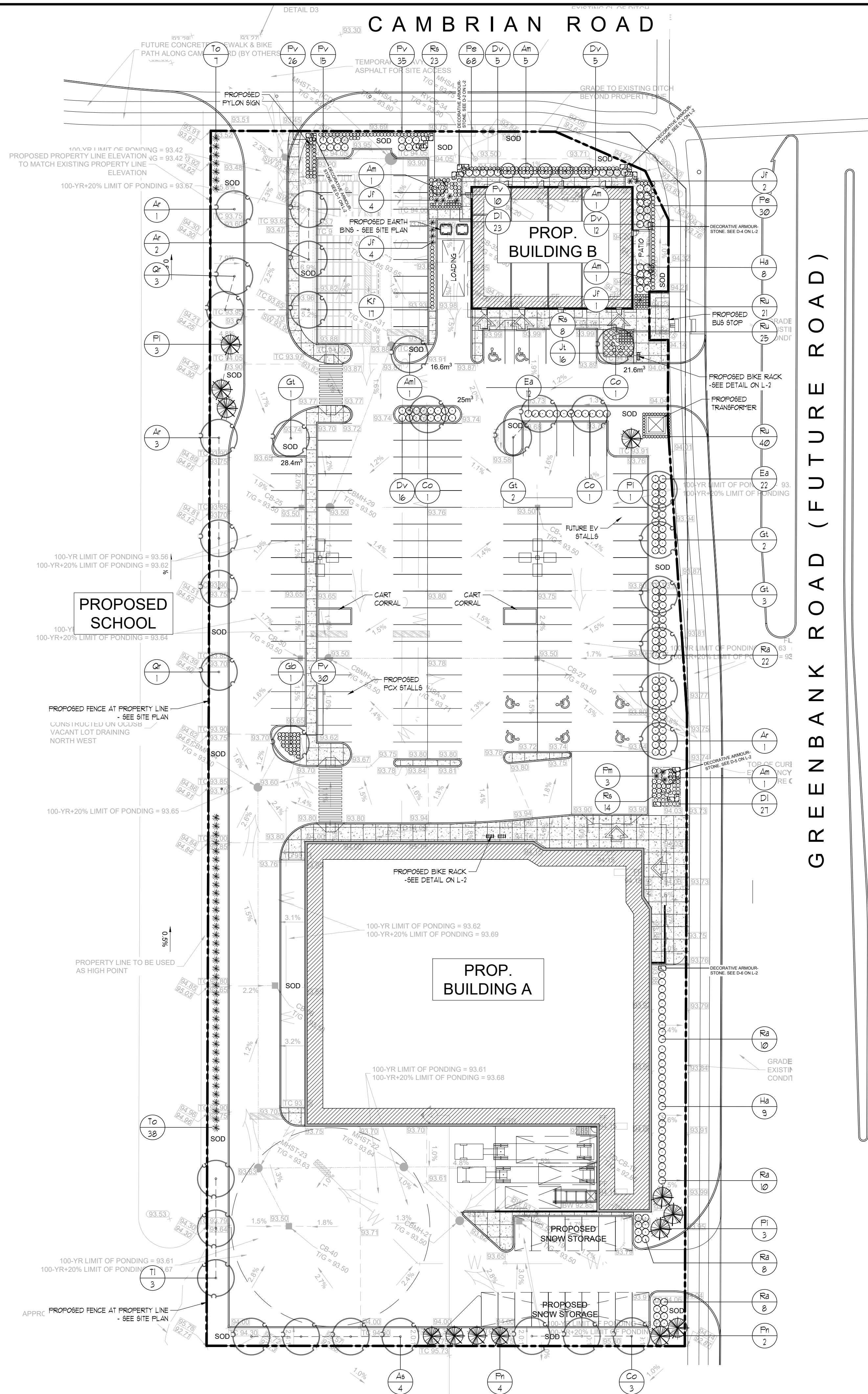


LANDSCAPE PLAN  
SCALE = 1:400



NOTE:  
A REVIEW OF THE PROPOSED SITE INDICATES THAT THERE ARE NO TREES LOCATED ON THE SITE THAT ARE SIGNIFICANT AND/OR MEET THE CITY OF OTTAWA'S TREE PRESERVATION REQUIREMENTS. THEREFORE, TREE PRESERVATION IS NOT REQUIRED.

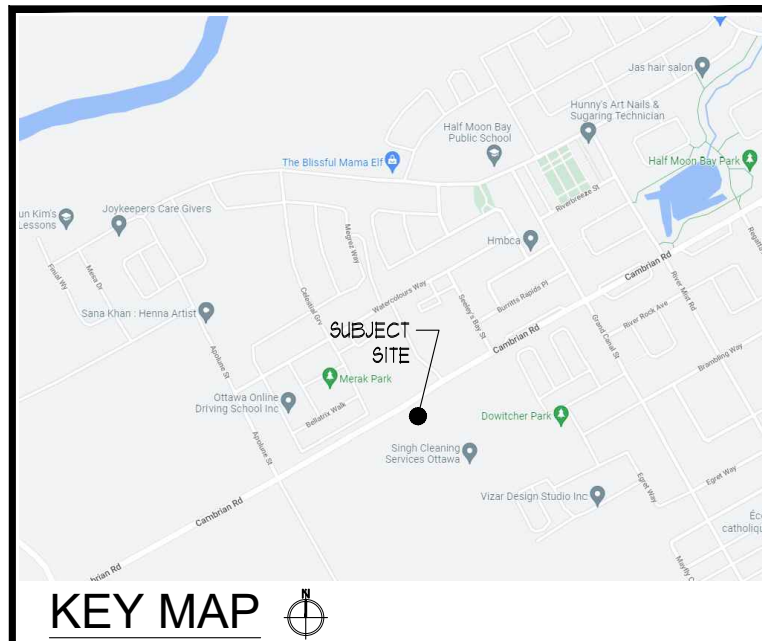
RKLA INC. LONDON ONTARIO

PLANT MATERIAL

| KEY                                     | COMMON NAME                 | BOTANICAL NAME                           | QTY | SIZE      | COND |
|---|-----------------------------|--|-----|-----------|------|
| DECIDUOUS AND CONIFEROUS TREES          |                             |  |     |           |      |
| Am                                      | MULTI-STEM SERVICEBERRY     | Anelanchier canadensis multi-stem        | 9   | 50cm      | POT  |
| Am1                                     | TREE FORM SERVICEBERRY      | Anelanchier canadensis TREE FORM         | 1   | 50cmcal   | POT  |
| Ar                                      | RED MAPLE                   | Acer rubrum 'Sunset'                     | 1   | 60cmcal   | UB   |
| As                                      | SUGAR MAPLE                 | Acer saccharum                           | 4   | 60cmcal   | UB   |
| Co                                      | HACKBERRY TREE              | Celtis occidentalis                      | 6   | 60cmcal   | UB   |
| Go                                      | MAIDEN HAIR TREE            | Ginkgo biloba                            | 1   | 60cmcal   | UB   |
| Gt                                      | SHADEMASTER LOCUST          | Gleditsia triacanthos 'Shademaster'      | 8   | 60cmcal   | UB   |
| Jf                                      | RED CEDAR                   | Juniperus virginiana                     | 11  | 120cm     | POT  |
| Pl                                      | WHITE SPRUCE                | Picea glauca                             | 1   | 50cm      | UB   |
| Fr                                      | NORWAY SPRUCE               | Picea abies                              | 6   | 50cm      | UB   |
| Qr                                      | RED OAK                     | Quercus rubra                            | 4   | 60cmcal   | UB   |
| Ti                                      | BASSWOOD                    | Tilia americana                          | 3   | 60cmcal   | UB   |
| To                                      | WHITE CEDAR                 | Thuja occidentalis                       | 45  | 50cm      | POT  |
| PERENNIALS, SHRUBS & ORNAMENTAL GRASSES |                             |  |     |           |      |
| DI                                      | PARDON ME DAYLILY           | Hemerocallis 'Pardon Me'                 | 50  | 2 1/2 gal | POT  |
| Dv                                      | BUSH HONEYSUCKLE            | Dierrevilla lonicera                     | 38  | 60cm      | POT  |
| Ea                                      | DWARF BURNING BUSH          | Euonymus alatus 'Compactus'              | 34  | 60cm      | POT  |
| Ha                                      | BOBO HYDRANGEA              | Hydrangea paniculata 'BOBO'              | 11  | 2 1/2 gal | POT  |
| Jl                                      | ARCADIA JUNIPER             | Juniperus sabina 'Arcadia'               | 16  | 40cm      | POT  |
| Kf                                      | KARL FOERSTER REED GRASS    | Calamagrostis acutifolia 'Karl Foerster' | 11  | 2 1/2 gal | POT  |
| Pa                                      | LITTLE BUNNY FOUNTAIN GRASS | Pennisetum alopecuroides 'Little Bunny'  | 58  | 2 1/2 gal | POT  |
| Pb                                      | DWARF MUSSO PINE            | Pinus mugo 'Parlati'                     | 3   | 60cm      | POT  |
| Pv                                      | SHENANDOAH BUTCH GRASS      | Panicum virgatum 'Shenandoah'            | 116 | 2 1/2 gal | POT  |
| Ra                                      | ALPINE CURRIANT             | Ribes alpinum                            | 58  | 60cm      | POT  |
| Rb                                      | RUSSIAN SAGE                | Perovskia atriplicifolia                 | 45  | 2 1/2 gal | POT  |
| Ru                                      | BLACKEYED SUSAN             | Rudbeckia fulgida 'Goldsturm'            | 86  | 2 1/2 gal | POT  |

LEGEND

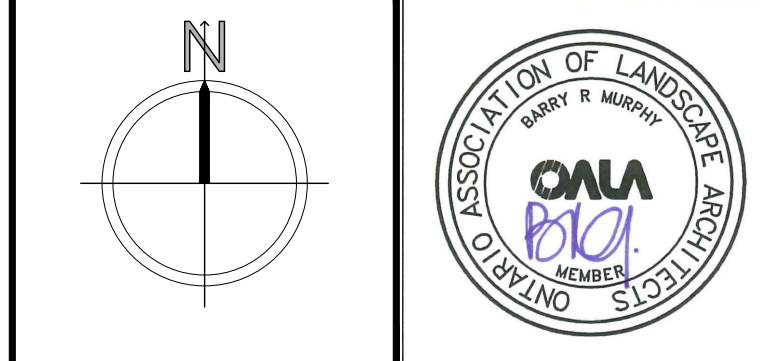
- PROPOSED DECIDUOUS TREES
- PROPOSED CONIFEROUS TREES
- PROPOSED PLANTINGS
- PLANT KEYS - SEE PLANT MATERIALS LIST
- PROPOSED CONCRETE PAVING
- PROPOSED ARMOURSTONE SEE LAYOUTS AND DETAIL ON L-2
- PROPOSED BIKE RACK SEE DETAIL ON L-2



ALL DRAWINGS REMAIN THE PROPERTY OF THE LANDSCAPE ARCHITECT AND SHALL NOT BE REPRODUCED OR REUSED WITHOUT THE LANDSCAPE ARCHITECTS WRITTEN PERMISSION.  
THIS DRAWING SHALL NOT BE USED FOR CONSTRUCTION OR TENDER PURPOSES UNLESS SIGNED AND DATED BY BARRY R. MURPHY, O.A.L.A. C.S.L.A. LANDSCAPE ARCHITECT, LONDON, ONTARIO (519) 867-3322.

| Barry R. Murphy, O.A.L.A. C.S.L.A. |                   | DATE |
|------------------------------------|-------------------|------|
|                                    |                   |      |
| NOV2523                            | ISSUED FOR SPA    | 9.   |
| NOV1223                            | ISSUED FOR REVIEW | 8.   |
| JUNE1323                           | ISSUED FOR REVIEW | 7.   |
| MAR1323                            | ISSUED FOR SPA    | 6.   |
| DEC1024                            | ISSUED FOR COORD  | 5.   |
| OCT1423                            | ISSUED FOR SPA    | 4.   |
| OCT1223                            | ISSUED FOR REVIEW | 3.   |
| MAY1023                            | ISSUED FOR SPA    | 2.   |
| APR12423                           | ISSUED FOR REVIEW | 1.   |
| DATE                               | DESCRIPTION       | No.  |

PLOTTING INFORMATION:  
PLOTTED DATE + NOV2523  
PLOTTED SCALE + 1:1



PROJECT TITLE:  
PROPOSED PHARMACY  
(SOUTH PARCEL)  
3845 CAMBRIAN RD.  
BARRHAVEN, ONTARIO

DRAWING TITLE:  
LANDSCAPE PLAN  
Plan # 19983  
File # D07-12-23-0058

|                             |                       |                    |
|-----------------------------|-----------------------|--------------------|
| DATE:<br>DECEMBER 2022      | SCALE:<br>AS NOTED    | DRAWING No.<br>L-1 |
| DRAWN:<br>RKLA Inc.         | CHECKED BY:<br>B.R.M. |                    |
| PROJECT No.<br>22-307Lo SPA |                       |                    |



