

LEGEND

DRAINAGE AREA (sq.m)

5-YEAR RUNOFF COEFFICIENT

KEY PLAN

No.	DATE	REVISION
4	MAR 31-26	RE-ISSUED FOR APPROVAL
3	JAN 14-26	ISSUED FOR CONSTRUCTION
2	DEC 16-25	RE-ISSUED FOR APPROVAL
1	JUL 15-25	ISSUED FOR APPROVAL

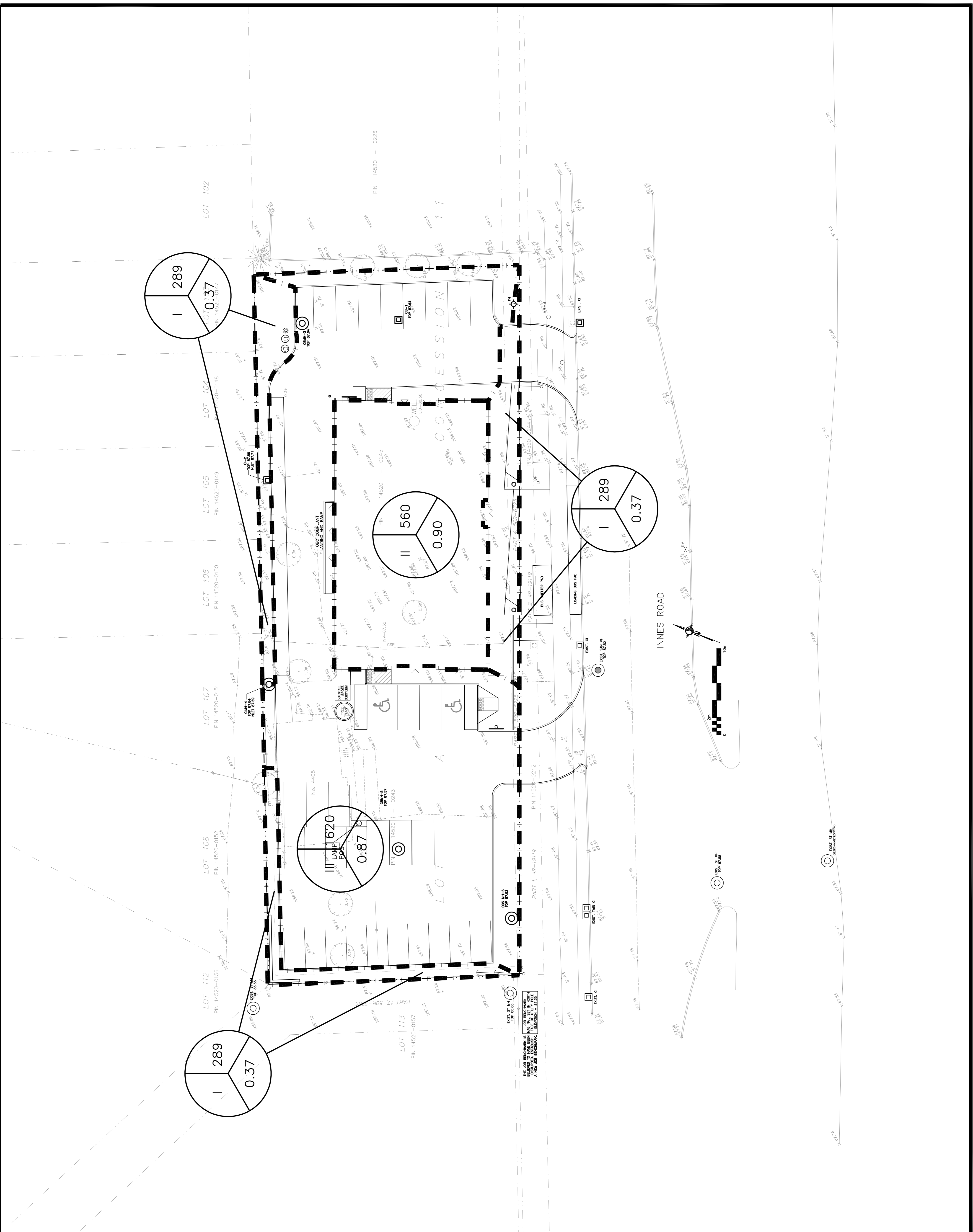
D. B. GRAY ENGINEERING INC.
 Professional Engineers - Consulting & Planning - Storm & Sanitary Services - Drainage
 700 Long Point Circle
 Ottawa, Ontario d.gray@dbgrayengineering.com

Project
 PROPOSED 2-STORY MEDICAL FACILITY
 4405-4409 INNES ROAD
 OTTAWA, ONTARIO

Drawing Title
DRAINAGE PLAN

Engineer's Seal

 Drawing No. **C-12**
 of **12**
 NOT VALID UNLESS SIGNED & DATED



THE JOB REQUIREMENTS FOR THIS PROJECT WERE TO DESIGN A NEW 2-STORY MEDICAL FACILITY AND TO PROVIDE A NEW JOB REQUIREMENT.

