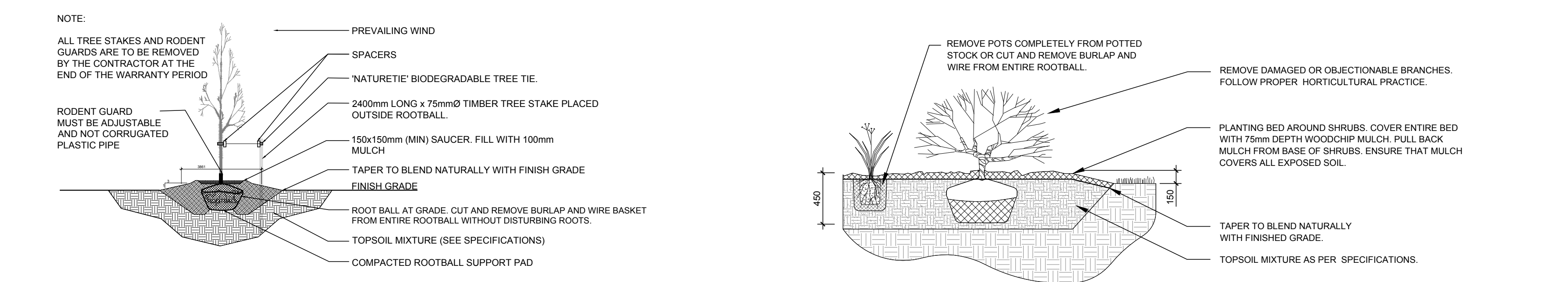
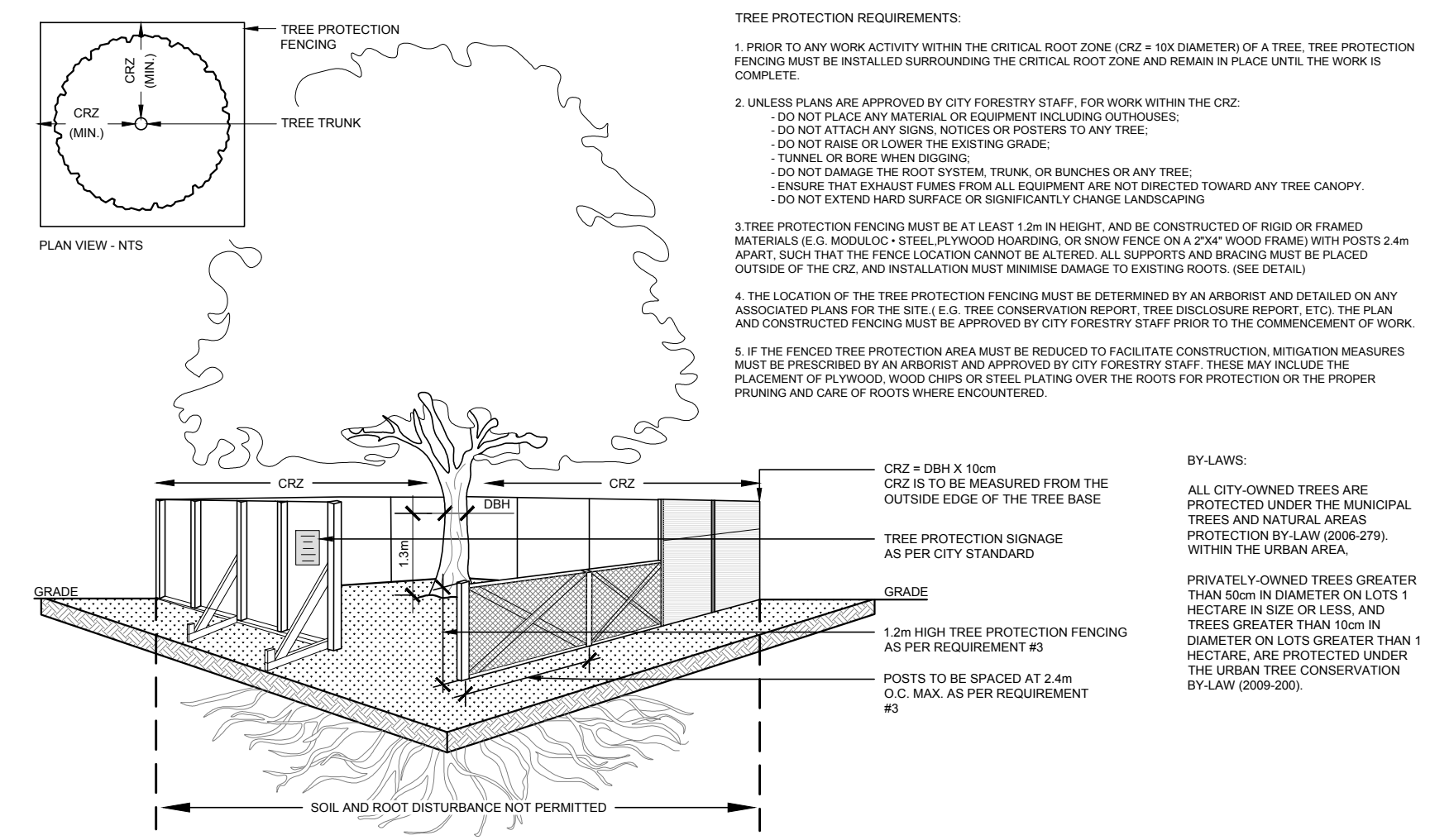


1
L.1 **TREE CONSERVATION REPORT & LANDSCAPE PLAN**
SCALE: 1:200

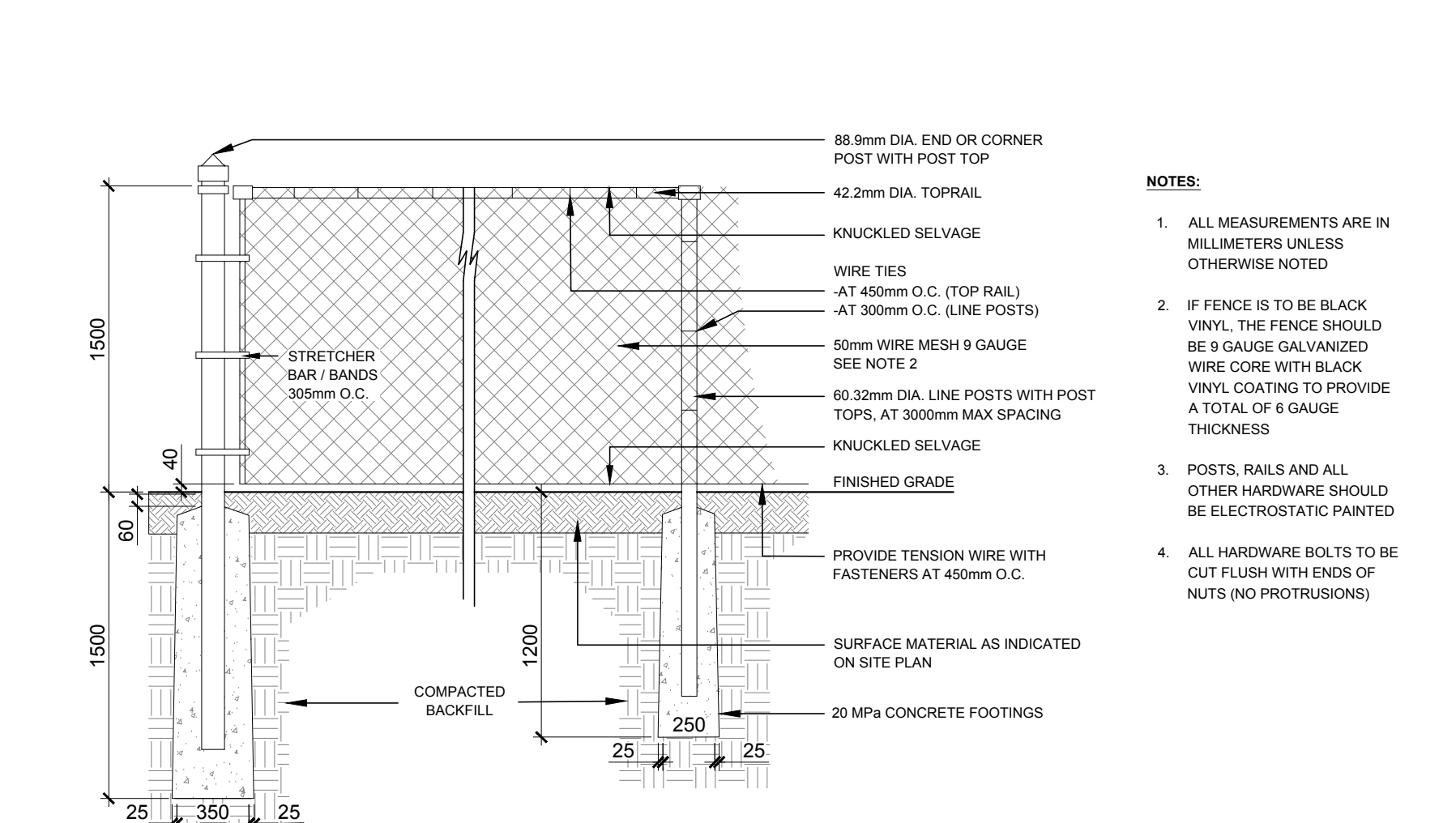


2
L.1 **DECIDUOUS TREE PLANTING**
SCALE: NTS



4
L.1 **TREE PROTECTION FENCE**
SCALE: NTS

3
L.1 **SHRUB / ORNAMENTAL GRASS PLANTING**
SCALE: NTS



5
L.1 **1.5m Ht. BLACK VINYL CHAIN LINK FENCE**
SCALE: NTS

40 YEAR CANOPY CALCULATION:

3,641 m² site area

- (1) Large Deciduous Trees Proposed (154m²ea.),
(4) Small Deciduous Trees Proposed (7m² ea)

= 182m² canopy cover = 5.00% canopy cover

*Large deciduous tree calculated at 14m spread,
and small tree at 3m spread

GENERAL NOTES:

- IT IS THE RESPONSIBILITY OF THE APPROPRIATE CONTRACTOR OR OFFICIAL TO REPORT ANY ERRORS, OMISSIONS OR DISCREPANCIES ON THIS PLAN WITH ACTUAL SITE CONDITIONS TO THE LANDSCAPE ARCHITECT BEFORE PROCEEDING WITH CONSTRUCTION.
- THE CONTRACTOR IS TO NOTIFY ALL UTILITY COMPANIES AND AUTHORITIES PRIOR TO ANY EXCAVATION AND ASCERTAIN LOCATIONS OF UNDERGROUND SERVICES.
- THE CONTRACTOR IS TO REINSTATE ALL AREAS AND ITEMS DAMAGED AS A RESULT OF CONSTRUCTION ACTIVITY.
- THE CONTRACTOR IS TO COMPLY WITH ALL PERTINENT CODES AND BY-LAWS.
- THE CONTRACTOR IS TO MAINTAIN A POSITIVE SURFACE RUN-OFF THROUGHOUT THE ENTIRE CONSTRUCTION PERIOD.
- THE LANDSCAPE ARCHITECT IS NOT RESPONSIBLE FOR SUBSURFACE CONDITIONS.
- THE CONTRACTOR IS TO IDENTIFY ALL EXISTING TREES TO REMAIN ON SITE WITH THE LANDSCAPE ARCHITECT PRIOR TO CONSTRUCTION.
- THE CONTRACTOR IS TO STAKE THE PROPOSED LOCATION OF ALL PLANT MATERIAL IN CONJUNCTION WITH THE LANDSCAPE ARCHITECT PRIOR TO EXCAVATION.
- MINIMUM DISTANCES FOR SELECTED DECIDUOUS TREES ARE AS FOLLOWS:
 - BUILDING FOUNDATIONS - 7.5M
 - SIDEWALKS - 1.5M
 - PUBLIC STREETS - 2.5M
 - UNDERGROUND INFRASTRUCTURE - 2.0M
- ALL TREES WITHIN 1M OF UNDERGROUND UTILITY TRENCHES ARE TO BE EXCAVATED BY HAND.
- REMOVE ALL PROTECTIVE WRAPPING FROM TREE TRUNKS AFTER INSTALLATION.
- STAKING OF TREES SHALL ONLY BE PERFORMED IF NECESSARY.
- ENSURE THAT MULCH IS PULLED BACK A MINIMUM DISTANCE OF 75MM FROM BASE OF TREE TRUNK.

LEGEND

- PROPOSED SODDED GRASS AREA
- PROPOSED RIVERSTONE MULCH (75-100mm DIA. / 3-4 INCH DIA.)
- PROPOSED MULCH
- REQUIRED SOIL VOLUME AT 1.5m DEPTH
- PROPOSED DECIDUOUS TREE
- PROPOSED SHRUBS / ORNAMENTAL GRASSES
- EXISTING TREE TO REMAIN
- EXISTING TREE TO BE REMOVED
- TREE PROTECTION FENCE
- PROPOSED 1.5m Ht. CHAIN LINK FENCE
- PROPERTY BOUNDARY
- TERRACING - REFER TO GRADING PLAN

LEGAL DESCRIPTION

PART OF LOT 28, CONCESSION 1 (RIDEAU FRONT)
DESIGNATED AS PARTS 1, 2, 3 & 4
PLAN 4R-15594 AS IN ALL OF PIN 04629-0906
GEOGRAPHIC TOWNSHIP OF NEPEAN
CITY OF OTTAWA

5				
4				
3	REISSUED FOR SPC	11/28/2025	WF	JL
2	REISSUED FOR SPC	08/25/2025	CAT	JL
1	ISSUED FOR SPC	04/02/2025	WF	JL

No. Issue Date M/M/YY DR. CK
JAMES B. LENNOX & ASSOCIATES INC.
LANDSCAPE ARCHITECTS
3332 CARLING AVE. OTTAWA, ONTARIO K2H 5A8
Tel: (613) 722-5168 Fax: (866) 343-3942

PROJECT
PROPOSED HALO CAR WASH
585 WEST HUNT CLUB RD. NEPEAN, ON

DRAWING
TREE CONSERVATION REPORT &
LANDSCAPE PLAN

STAMP

PROJECT NORTH

SCALE
AS SHOWN
START DATE
MARCH 2025
PROJECT NO.
25MIS2512
DRAWING NO.
L.1
PLOT SIZE ARCH-D