



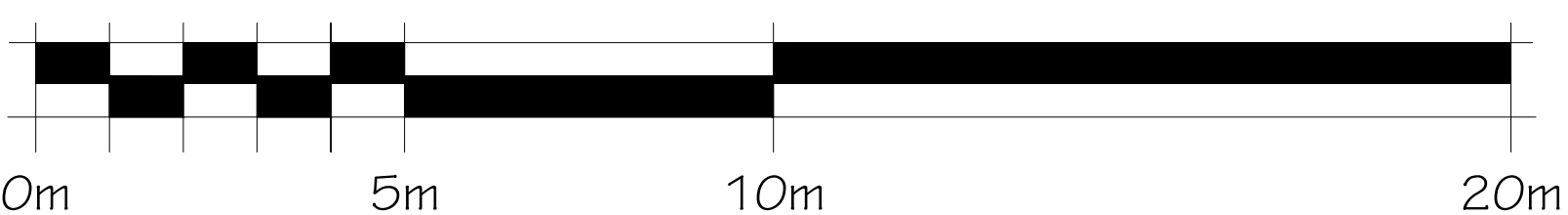
1 WEST BUILDING - NORTH ELEVATION  
A3.01 1:100

NOTES:  
IN ADDITION TO ILLUSTRATED EXTERIOR WALL MOUNTED LIGHT FIXTURES, EXTERIOR POTLIGHTS TO BE INSTALLED AT ENTRY CANOPIES  
BIRD FRIENDLY GLASS - AS PER CITY BIRD SAFE GUIDELINES GUIDELINE 2. Treatments to be applied to a minimum of 80% of the glass within the first 10 metres of height.

EXAMPLES FOR CONSIDERATION INCLUDE:  
1. GLASS FIRST FOR ALL BALCONY RAILINGS UNDER 16 METRES IN HEIGHT  
2. GLASS FIRST FOR ALL BALCONY RAILINGS ON ROOF TERRACE LEVEL

- FINISH MATERIAL LEGEND:
- AF ALUMINUM FLASHING
  - AP ALUMINUM PANEL
  - AS ALUMINUM SIDING
  - BV BRICK VENEER
  - CC COPPER CANOPY
  - GR GLASS RAILING
  - LF EXTERIOR LIGHT FIXTURE
  - ML METAL LOUVER
  - MS METAL SIDING
  - PC PRECAST CONCRETE HEADER/SILL
  - SG SPANDREL GLASS
  - SV STONE VENEER
  - VG VISION GLASS

GRAPHIC SCALE



3	2025-12-19	REISSUED FOR SFA
2	2025-09-17	REISSUED FOR SFA
1	2025-06-27	ISSUED FOR SFA

no. date revision  
It is the responsibility of the appropriate contractor to check and verify all dimensions on site and report all errors and/or omissions to the architect.  
All contractors must comply with all pertinent codes and by-laws.  
Do not scale drawings.  
This drawing may not be used for construction until signed.  
Copyright reserved.



PROJECT/LOCATION:  
335 ROOSEVELT  
HIGHRISE RENTAL APARTMENTS  
335 ROOSEVELT AVE OTTAWA, ONTARIO

DRAWING TITLE:  
WEST BUILDING  
NORTH ELEVATION

DRAWN BY: J.D. DATE: SEP. 4, 2024 SCALE: 1:100

PROJECT: 2315  
DRAWING NO.: A-3.01

REVISION NO.:  
Plan No: 18281

File No: D07-12-25-0097





1 WEST BUILDING - SOUTH ELEVATION  
A3.02 1:100

#### NOTES:

IN ADDITION TO ILLUSTRATED EXTERIOR WALL MOUNTED LIGHT FIXTURES, EXTERIOR POTLIGHTS TO BE INSTALLED AT ENTRY CANOPIES.

BIRD FRIENDLY GLASS - AS PER CITY BIRD SAFE GUIDELINES GUIDELINE 2. Treatments to be applied to a minimum of 80% of the glass within the first 10 metres of height.

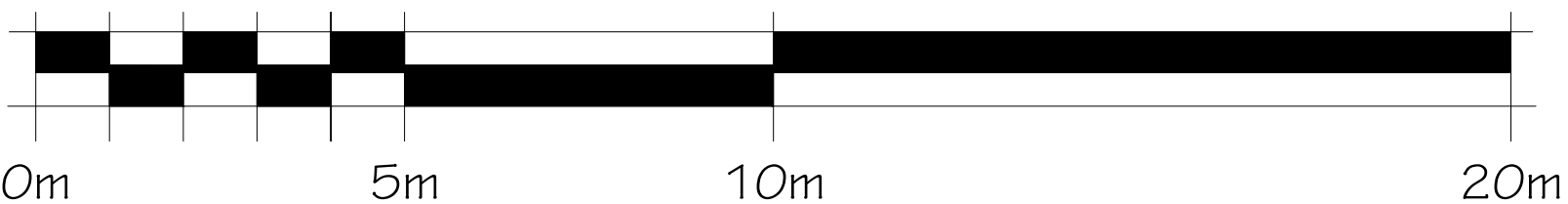
#### EXAMPLES FOR CONSIDERATION INCLUDE:

1. GLASS FIRST FOR ALL BALCONY RAILINGS UNDER 16 METRES IN HEIGHT
2. GLASS FIRST FOR ALL BALCONY RAILINGS ON ROOF TERRACE LEVELS

#### FINISH MATERIAL LEGEND:

- AF ALUMINUM FLASHING
- AP ALUMINUM PANEL
- AS ALUMINUM SIDING
- BV BRICK VENEER
- CC COPPER CANOPY
- GR GLASS RAILING
- LF EXTERIOR LIGHT FIXTURE
- ML METAL LOUVRE
- MS METAL SIDING
- PC PRECAST CONCRETE HEADER/SILL
- SG SPANDREL GLASS
- SV STONE VENEER
- VG VISION GLASS

#### GRAPHIC SCALE



3	2025-12-19	REISSUED FOR SFA
2	2025-09-17	REISSUED FOR SFA
1	2025-06-27	ISSUED FOR SFA

no. date revision

It is the responsibility of the appropriate contractor to check and verify all dimensions on site and report all errors and/or omissions to the architect.

All contractors must comply with all pertinent codes and by-laws.

Do not scale drawings.

This drawing may not be used for construction until signed.

Copyright reserved.

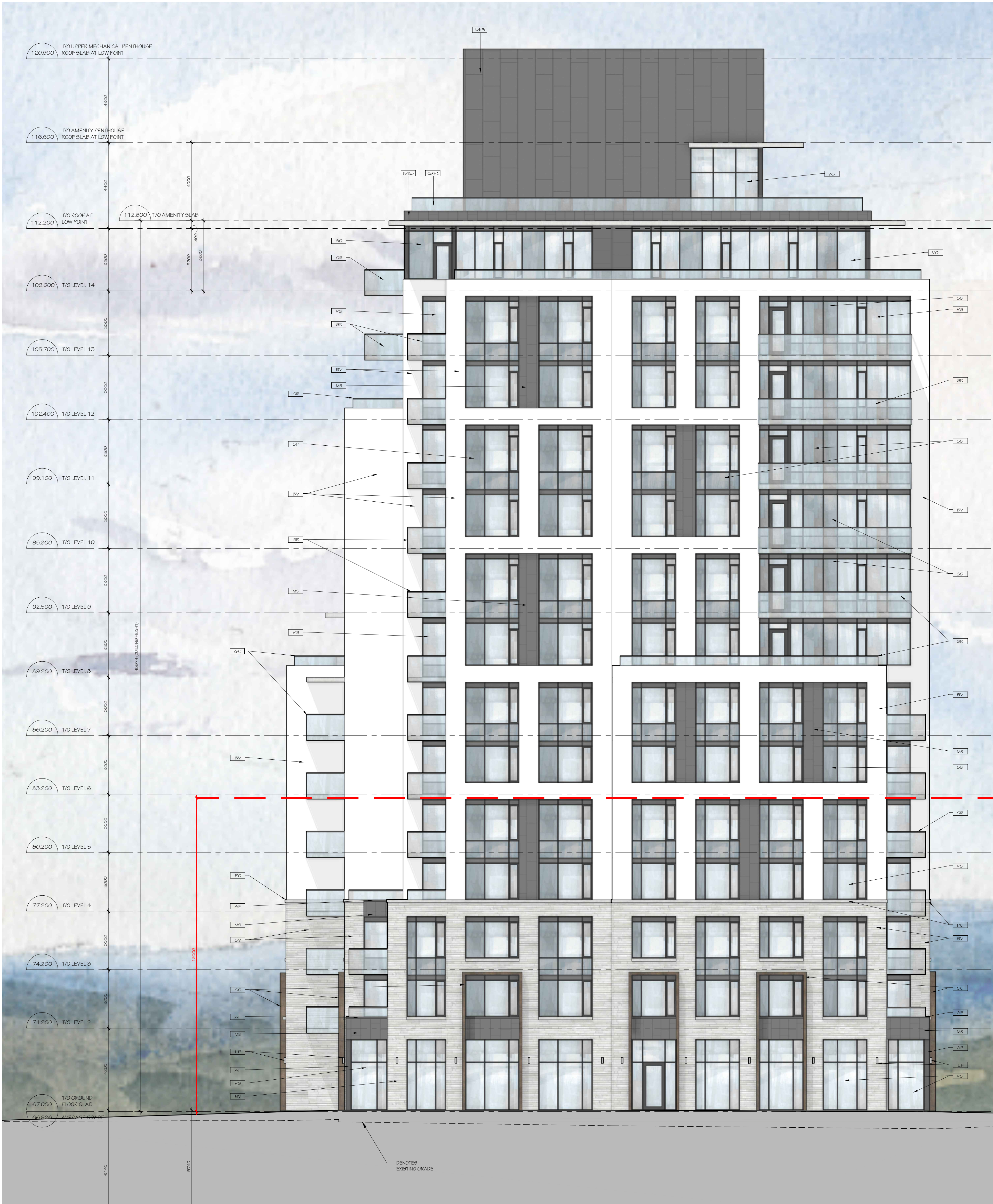


PROJECT/LOCATION:  
335 ROOSEVELT  
HIGHRISE RENTAL APARTMENTS  
335 ROOSEVELT AVE OTTAWA, ONTARIO

DRAWING TITLE:  
WEST BUILDING  
SOUTH ELEVATION

DRAWN BY: JD	DATE: SEP. 4, 2024	SCALE: 1:100
PROJECT: 2315		DRAWING NO.: A-3.02
REVISION NO.:		REVISION NO.:





1 WEST BUILDING - EAST ELEVATION  
A3.03  
1:100

NOTES:

IN ADDITION TO ILLUSTRATED EXTERIOR WALL MOUNTED LIGHT FIXTURES, EXTERIOR POTLIGHTS TO BE INSTALLED AT ENTRY CANOPIES

BIRD FRIENDLY GLASS - AS PER CITY BIRD SAFE GUIDELINES GUIDELINE 2. Treatments to be applied to a minimum of 80% of the glass within the first 10 metres of height.

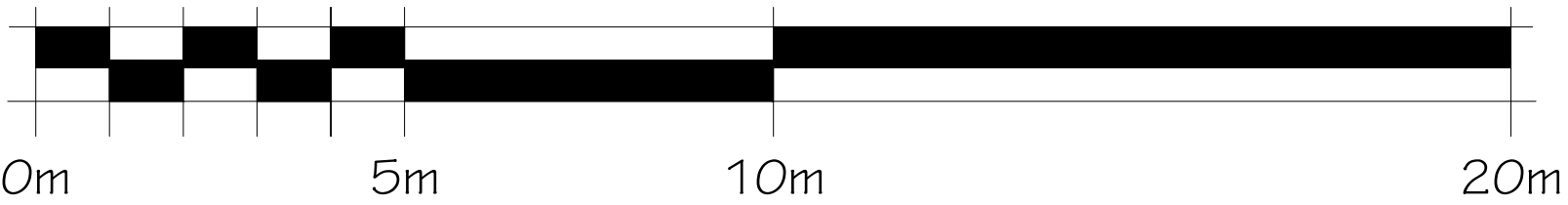
EXAMPLES FOR CONSIDERATION INCLUDE:

1. GLASS FIRST FOR ALL BALCONY RAILINGS UNDER 16 METRES IN HEIGHT
2. GLASS FIRST FOR ALL BALCONY RAILINGS ON ROOF TERRACE LEVEL

FINISH MATERIAL LEGEND:

- [AF] ALUMINUM FLASHING
- [AP] ALUMINUM PANEL
- [AS] ALUMINUM SIDING
- [BV] BRICK VENEER
- [CC] COPPER CANOPY
- [GR] GLASS RAILING
- [LF] EXTERIOR LIGHT FIXTURE
- [ML] METAL LOUVER
- [MS] METAL SIDING
- [PC] PRECAST CONCRETE HEADER/SILL
- [SG] SPANDREL GLASS
- [SV] STONE VENEER
- [VG] VISION GLASS

GRAPHIC SCALE



3	2025-12-19	REVISED FOR SFA
2	2025-09-17	REVISED FOR SFA
1	2025-06-27	ISSUED FOR SFA

no. date revision

It is the responsibility of the appropriate contractor to check and verify all dimensions on site and report all errors and/or omissions to the architect.

All contractors must comply with all pertinent codes and by-laws.

Do not scale drawings.

This drawing may not be used for construction until signed.

Copyright reserved.



PROJECT/LOCATION:  
335 ROOSEVELT  
HIGHRISE RENTAL APARTMENTS  
335 ROOSEVELT AVE OTTAWA, ONTARIO

DRAWING TITLE:  
WEST BUILDING  
EAST ELEVATION

DRAWN BY: JD	DATE: SEP. 4, 2024	SCALE: 1:100
PROJECT: 2315		DRAWING NO.: A-3.03
REVISION NO.:		Plan No: 18281

File No: D07-12-25-0097









1 EAST BUILDING - NORTH ELEVATION  
A3.05 1:100

NOTES:

IN ADDITION TO ILLUSTRATED EXTERIOR WALL MOUNTED LIGHT FIXTURES, EXTERIOR POTLIGHTS TO BE INSTALLED AT ENTRY CANOPIES.

BIRD FRIENDLY GLASS - AS PER CITY BIRD SAFE GUIDELINES GUIDELINE 2. Treatments to be applied to a maximum of 30% of the glass within the first 10 metres of height.

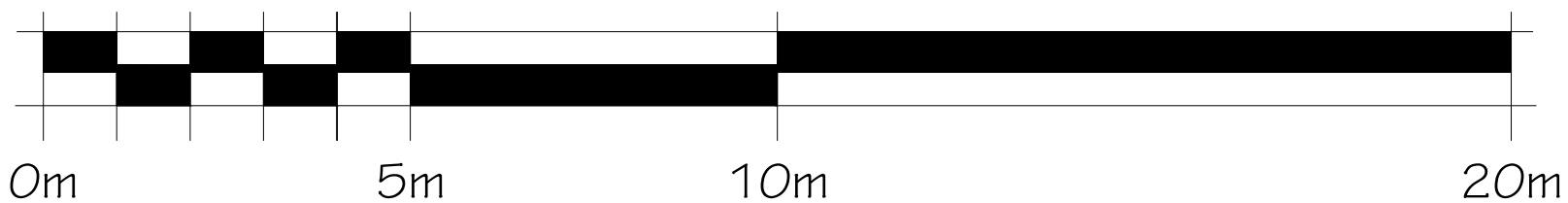
EXAMPLES FOR CONSIDERATION INCLUDE:

1. GLASS FIRST FOR ALL BALCONY RAILINGS UNDER 16 METRES IN HEIGHT
2. GLASS FIRST FOR ALL BALCONY RAILINGS ON ROOF TERRACE LEVEL

FINISH MATERIAL LEGEND:

- AF ALUMINUM FLASHING
- AP ALUMINUM PANEL
- AS ALUMINUM SIDING
- BV BRICK VENEER
- CC COPPER CANOPY
- GR GLASS RAILING
- LF EXTERIOR LIGHT FIXTURE
- ML METAL LOUVRE
- MB METAL SIDING
- PC PRECAST CONCRETE HEADER/SILL
- SG SPANDREL GLASS
- SV STONE VENEER
- VG VISION GLASS

GRAPHIC SCALE



3	2025-12-19	REVISED FOR SFA
2	2025-09-17	REVISED FOR SFA
1	2025-06-27	ISSUED FOR SFA

no. date revision

It is the responsibility of the appropriate contractor to check and verify all dimensions on site and report all errors and/or omissions to the architect.

All contractors must comply with all pertinent codes and by-laws.  
Do not scale drawings.

This drawing may not be used for construction until signed.

Copyright reserved.



Hobin Architecture Incorporated  
63 Pamela Street  
Ottawa, Ontario  
Canada K1S 3K7  
T: 613 238-7200  
F: 613 235-2005  
E: info@hobinarc.com  
hobinarc.com



PROJECT/LOCATION:  
335 ROOSEVELT  
HIGHRISE RENTAL APARTMENTS  
335 ROOSEVELT AVE OTTAWA, ONTARIO

DRAWING TITLE:  
EAST BUILDING  
NORTH ELEVATION

DRAWN BY: J.D. DATE: SEP. 4, 2024 SCALE: 1:100

PROJECT: 2315  
DRAWING NO.: A-3.05

REVISION NO.:

Plan No: 18281

File No: D07-12-25-0097





1 EAST BUILDING - SOUTH ELEVATION  
A3.06  
1:100

NOTES:

IN ADDITION TO ILLUSTRATED EXTERIOR WALL MOUNTED LIGHT FIXTURES, EXTERIOR POTLIGHTS TO BE INSTALLED AT ENTRY CANOPIES

BIRD FRIENDLY GLASS - AS PER CITY BIRD SAFE GUIDELINES GUIDELINE 2. Treatments to be applied to a minimum of 80% of the glass within the first 10 metres of height.

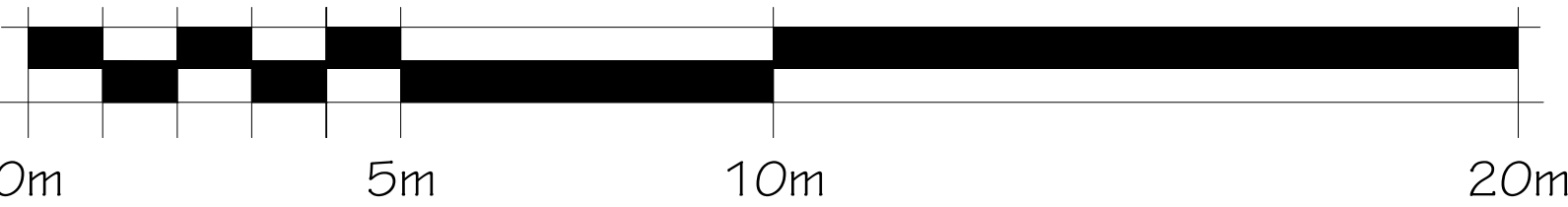
EXAMPLES FOR CONSIDERATION INCLUDE:

1. GLASS FRIT FOR ALL BALCONY RAILINGS UNDER 16 METRES IN HEIGHT
2. GLASS FRIT FOR ALL BALCONY RAILINGS ON ROOF TERRACE LEVEL

FINISH MATERIAL LEGEND:

- [AF] ALUMINUM FLASHING
- [AP] ALUMINUM PANEL
- [AS] ALUMINUM SIDING
- [BV] BRICK VENEER
- [CC] COPPER CANOPY
- [GR] GLASS RAILING
- [LF] EXTERIOR LIGHT FIXTURE
- [ML] METAL LOUVRE
- [MS] METAL SIDING
- [PC] PRECAST CONCRETE HEADER/SILL
- [SG] SPANDREL GLASS
- [SV] STONE VENEER
- [VG] VISION GLASS

GRAPHIC SCALE



3	2025-12-19	REISSUED FOR SFA
2	2025-09-17	REISSUED FOR SFA
1	2025-06-27	ISSUED FOR SFA

no. date revision

It is the responsibility of the appropriate contractor to check and verify all dimensions on site and report all errors and/or omissions to the architect.

All contractors must comply with all pertinent codes and by-laws.

Do not scale drawings.

This drawing may not be used for construction until signed.

Copyright reserved.



Hobin Architecture Incorporated  
63 Pamela Street  
Ottawa, Ontario  
Canada K1S 3K7  
T: 613-238-7200  
F: 613-235-2005  
E: info@hobinarc.com  
hobinarc.com

PROJECT/LOCATION:  
335 ROOSEVELT  
HIGHRISE RENTAL APARTMENTS  
335 ROOSEVELT AVE OTTAWA, ONTARIO

DRAWING TITLE:  
EAST BUILDING  
SOUTH ELEVATION

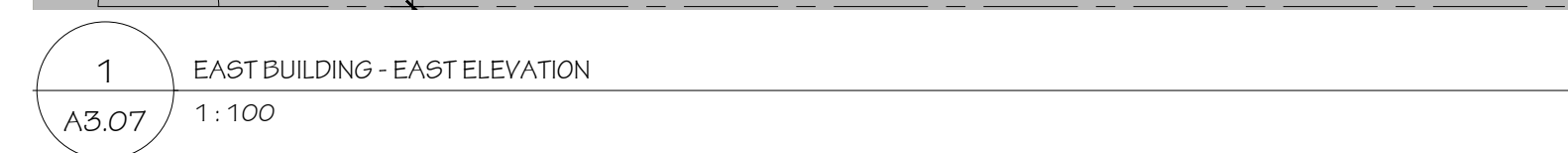
DRAWN BY: J.D.  
DATE: SEP. 4, 2024  
SCALE: 1:100



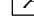


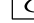



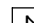
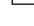
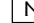
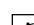
PROJECT: 2315  
DRAWING NO.: A-3.06

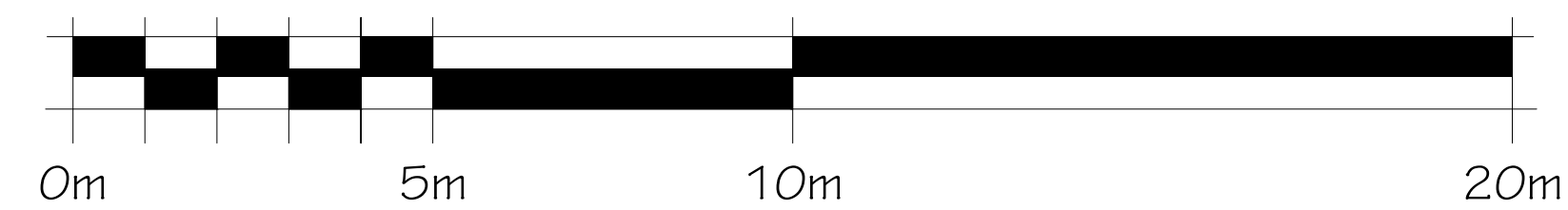
REVISION NO.:  
Plan No: 18281

File No: D07-12-25-0097





	ALUMINUM FLASHING
	ALUMINUM PANEL
	ALUMINUM SIDING
	BRICK VENEER
	COPPER CANOPY
	GLASS RAILING
	EXTERIOR LIGHT FIXTURE
	METAL LOUVRE
	METAL SIDING
	PRECAST CONCRETE HEADER/SILL
	SPANDREL GLASS
	STONE VENEER
	VISION GLASS



PROJECT/LOCATION:	
<p align="center"><b>335 ROOSEVELT</b>  <b>HIGHRISE RENTAL APARTMENTS</b>          335 ROOSEVELT AVE, OTTAWA, ONTARIO</p>	
DRAWING TITLE:	
<p align="center"><b>EAST BUILDING</b>  <b>EAST ELEVATION</b></p>	
DRAWN BY:	SCALE:
J.D.	1:100
SEP. 4, 2014	
	PROJECT:
	2315
	DRAWING NO.:
	A-3.07
	REVISION NO.





1 EAST BUILDING - WEST ELEVATION  
A3.08  
1:100

NOTES:

IN ADDITION TO ILLUSTRATED EXTERIOR WALL MOUNTED LIGHT FIXTURES, EXTERIOR POTLIGHTS TO BE INSTALLED AT ENTRY CANOPIES.

BIRD FRIENDLY GLASS - AS PER CITY BIRD SAFE GUIDELINES GUIDELINE 2. Treatments to be applied to a minimum of 80% of the glass within the first 10 metres of height.

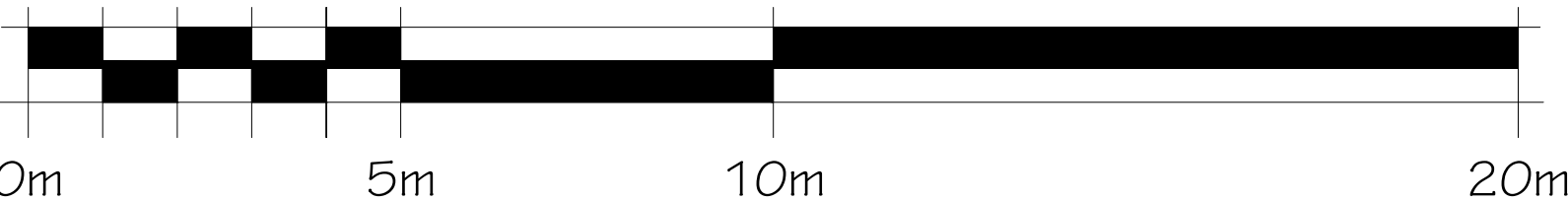
EXAMPLES FOR CONSIDERATION INCLUDE:

- GLASS FRIT FOR ALL BALCONY RAILINGS UNDER 10 METRES IN HEIGHT
- GLASS FRIT FOR ALL BALCONY RAILINGS ON ROOF TERRACE LEVEL

FINISH MATERIAL LEGEND:

- AF ALUMINUM FLASHING
- AP ALUMINUM PANEL
- AS ALUMINUM SIDING
- BV BRICK VENEER
- CC COPPER CANOPY
- GR GLASS RAILING
- LF EXTERIOR LIGHT FIXTURE
- ML METAL LOUVRE
- MS METAL SIDING
- PC PRECAST CONCRETE HEADER/SILL
- SG EXPANDED GLASS
- SV STONE VENEER
- VG VISION GLASS

GRAPHIC SCALE



3	2025-12-19	REVISED FOR SFA
2	2025-09-17	REVISED FOR SFA
1	2025-06-27	ISSUED FOR SFA

no. date revision

It is the responsibility of the appropriate contractor to check and verify all dimensions on site and report all errors and/or omissions to the architect.

All contractors must comply with all pertinent codes and by-laws.

Do not scale drawings.

This drawing may not be used for construction until signed.

Copyright reserved.



Hobin Architecture Incorporated  
63 Pamela Street  
Ottawa, Ontario  
Canada K1S 3K7  
T: 613-238-7200  
F: 613-235-2005  
E: info@hobinarc.com  
hobinarc.com

HOBIN ARCHITECTURE

PROJECT/LOCATION:  
335 ROOSEVELT  
HIGHRISE RENTAL APARTMENTS  
335 ROOSEVELT AVE OTTAWA, ONTARIO

DRAWING TITLE:  
EAST BUILDING  
WEST ELEVATION

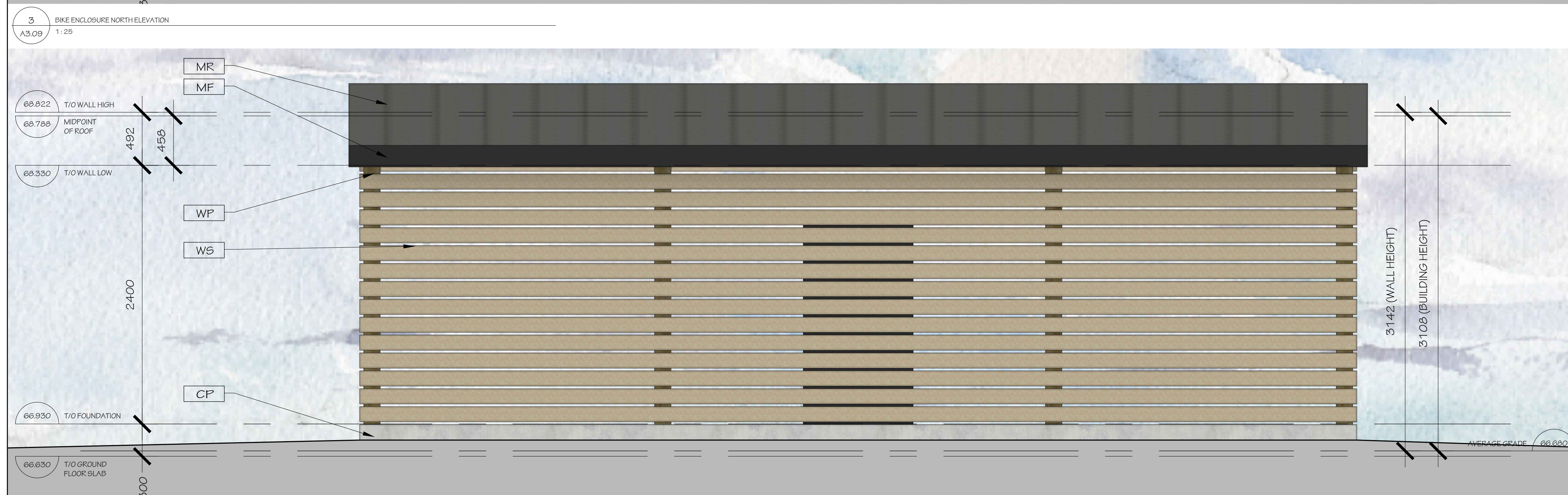
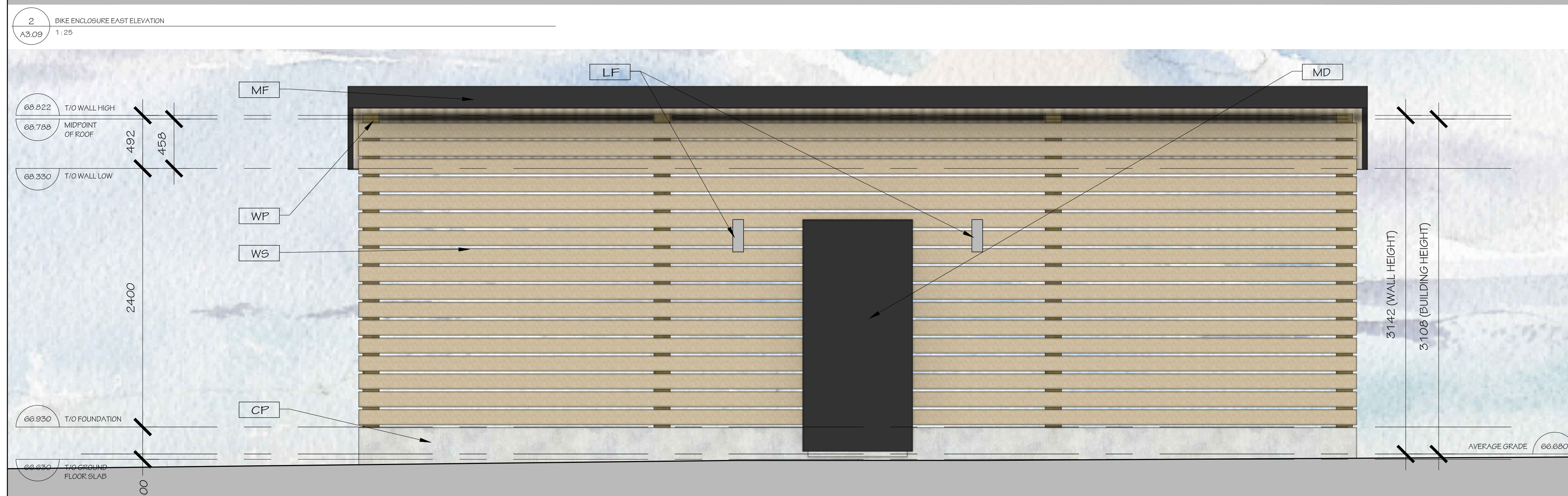
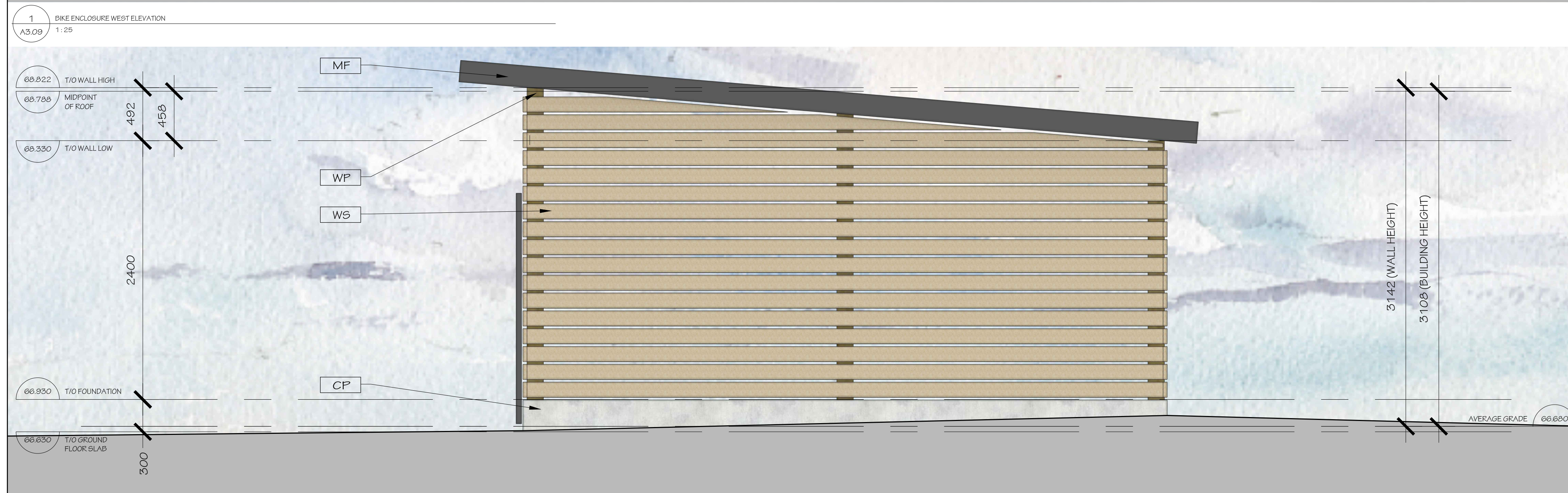
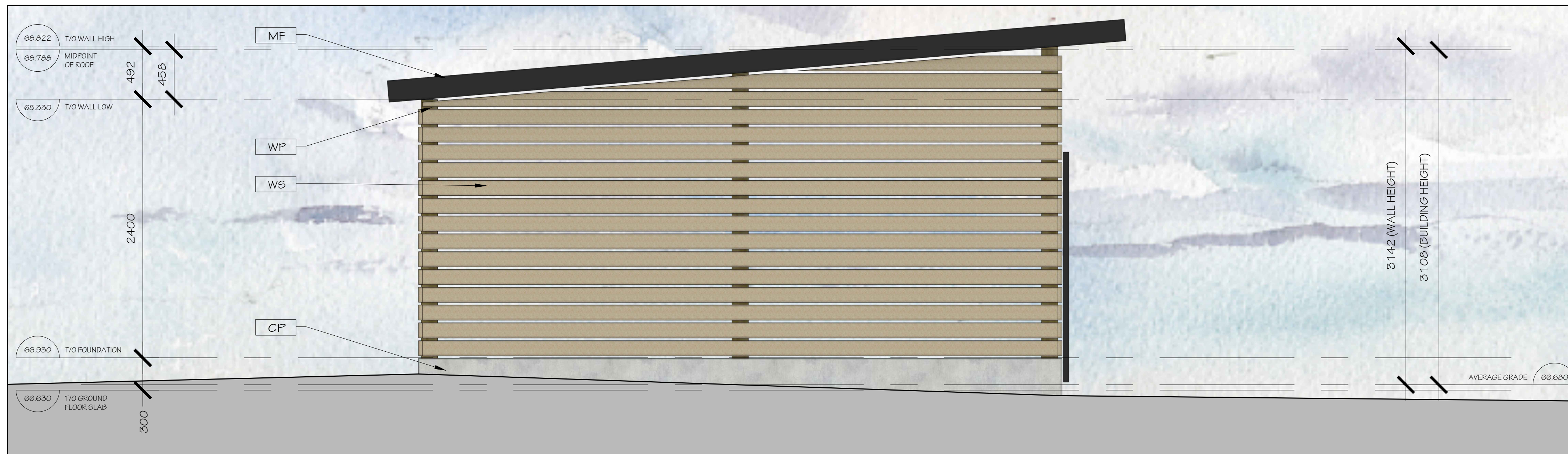
DRAWN BY: J.D.  
DATE: SEP. 4, 2024  
SCALE: 1:100

PROJECT: 2315  
DRAWING NO.: A-3.08

REVISION NO.:  
Plan No: 18281

File No: D07-12-25-0097



[illegible]

2	2025-12-19	REISSUED FOR SPA
1	2025-09-17	REISSUED FOR SPA
no.	date	revision

It is the responsibility of the appropriate contractor to check and verify all dimensions on site and report all errors and/or omissions to the architect.

All contractors must comply with all pertinent codes and by-laws.

Do not scale drawings.

This drawing may not be used for construction until signed.

Copyright reserved.



**Hobin Architecture  
Incorporated**  
63 Parnilla Street  
Ottawa, Ontario  
Canada K1S 3K7  
T: 613-238-7200  
F: 613-235-2005  
E: [mail@hobinarc.com](mailto:mail@hobinarc.com)  
**[hobinarc.com](http://hobinarc.com)**



PROJECT/LOCATION:  
**335 ROOSEVELT**  
**HIGHRISE RENTAL APARTMENTS**  
335 ROOSEVELT AVE. OTTAWA, ONTARIO

DRAWING TITLE:  
EXTERIOR BIKE ENCLOSURE  
ELEVATIONS

DRAWN BY:	DATE:	SCALE:
JD	SEP. 4, 2024	AS NOTED

SCALE:  
AS NOTED

PROJECT:

DRAWING NO.:

4.200

A-3.09

