

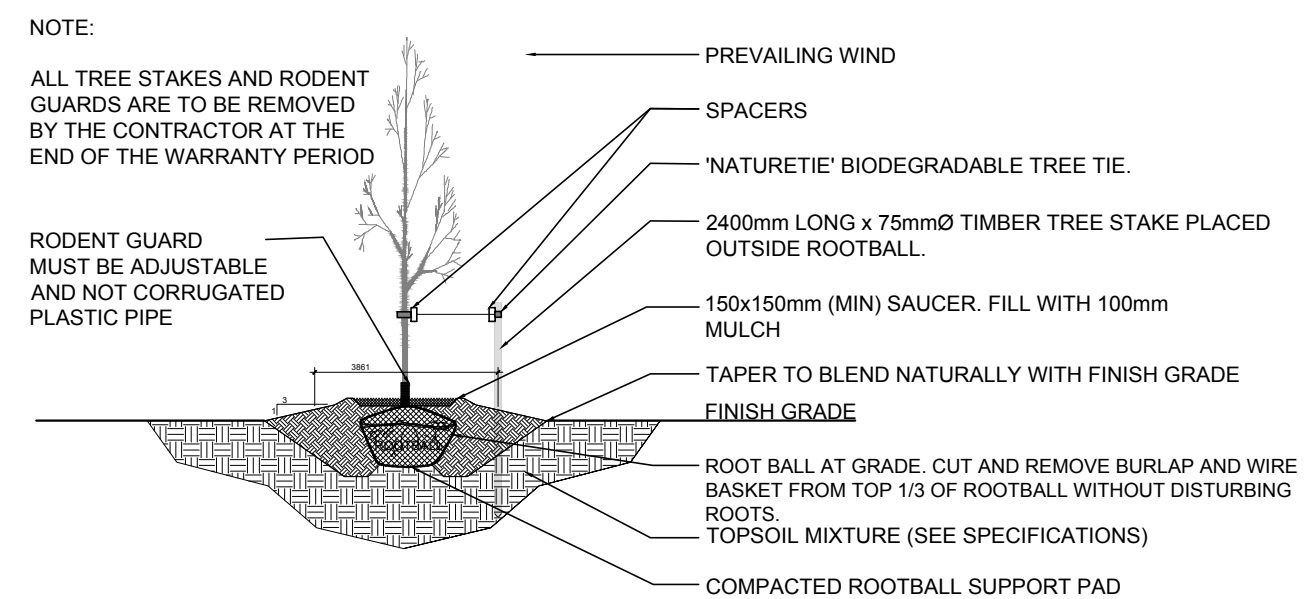
- GENERAL NOTES:**
- IT IS THE RESPONSIBILITY OF THE APPROPRIATE CONTRACTOR OR OFFICIAL TO REPORT ANY ERRORS, OMISSIONS OR DISCREPANCIES ON THIS PLAN WITH ACTUAL SITE CONDITIONS TO THE LANDSCAPE ARCHITECT BEFORE PROCEEDING WITH CONSTRUCTION.
  - THE CONTRACTOR IS TO NOTIFY ALL UTILITY COMPANIES AND AUTHORITIES PRIOR TO ANY EXCAVATION AND ASCERTAIN LOCATIONS OF UNDERGROUND SERVICES.
  - THE CONTRACTOR IS TO RESTATE ALL AREAS AND ITEMS DAMAGED AS A RESULT OF CONSTRUCTION ACTIVITY.
  - THE CONTRACTOR IS TO COMPLY WITH ALL PERTINENT CODES AND BY-LAWS.
  - THE CONTRACTOR IS TO MAINTAIN A POSITIVE SURFACE RUN-OFF THROUGHOUT THE ENTIRE CONSTRUCTION PERIOD.
  - THE LANDSCAPE ARCHITECT IS NOT RESPONSIBLE FOR SUBSURFACE CONDITIONS.
  - THE CONTRACTOR IS TO IDENTIFY ALL EXISTING TREES TO REMAIN ON SITE WITH THE LANDSCAPE ARCHITECT PRIOR TO CONSTRUCTION.
  - THE CONTRACTOR IS TO STAKE THE PROPOSED LOCATION OF ALL PLANT MATERIAL IN CONJUNCTION WITH THE LANDSCAPE ARCHITECT PRIOR TO EXCAVATION.
  - MINIMUM DISTANCES FOR SELECTED DECIDUOUS TREES ARE AS FOLLOWS:
    - BUILDING FOUNDATIONS - 7.5M
    - SIDEWALKS - 1.5M
    - PUBLIC STREETS - 2.5M
    - UNDERGROUND INFRASTRUCTURE - 2.0M
  - ALL TREES WITHIN 1M OF UNDERGROUND UTILITY TRENCHES ARE TO BE EXCAVATED BY HAND.
  - REMOVE ALL PROTECTIVE WRAPPING FROM TREE TRUNKS AFTER INSTALLATION.
  - STAKING OF TREES SHALL ONLY BE PERFORMED IF NECESSARY.
  - ENSURE THAT MULCH IS PULLED BACK A MINIMUM DISTANCE OF 75MM FROM BASE OF TREE TRUNK.

**1 TREE CONSERVATION REPORT & LANDSCAPE PLAN**  
L.1 SCALE 1:300

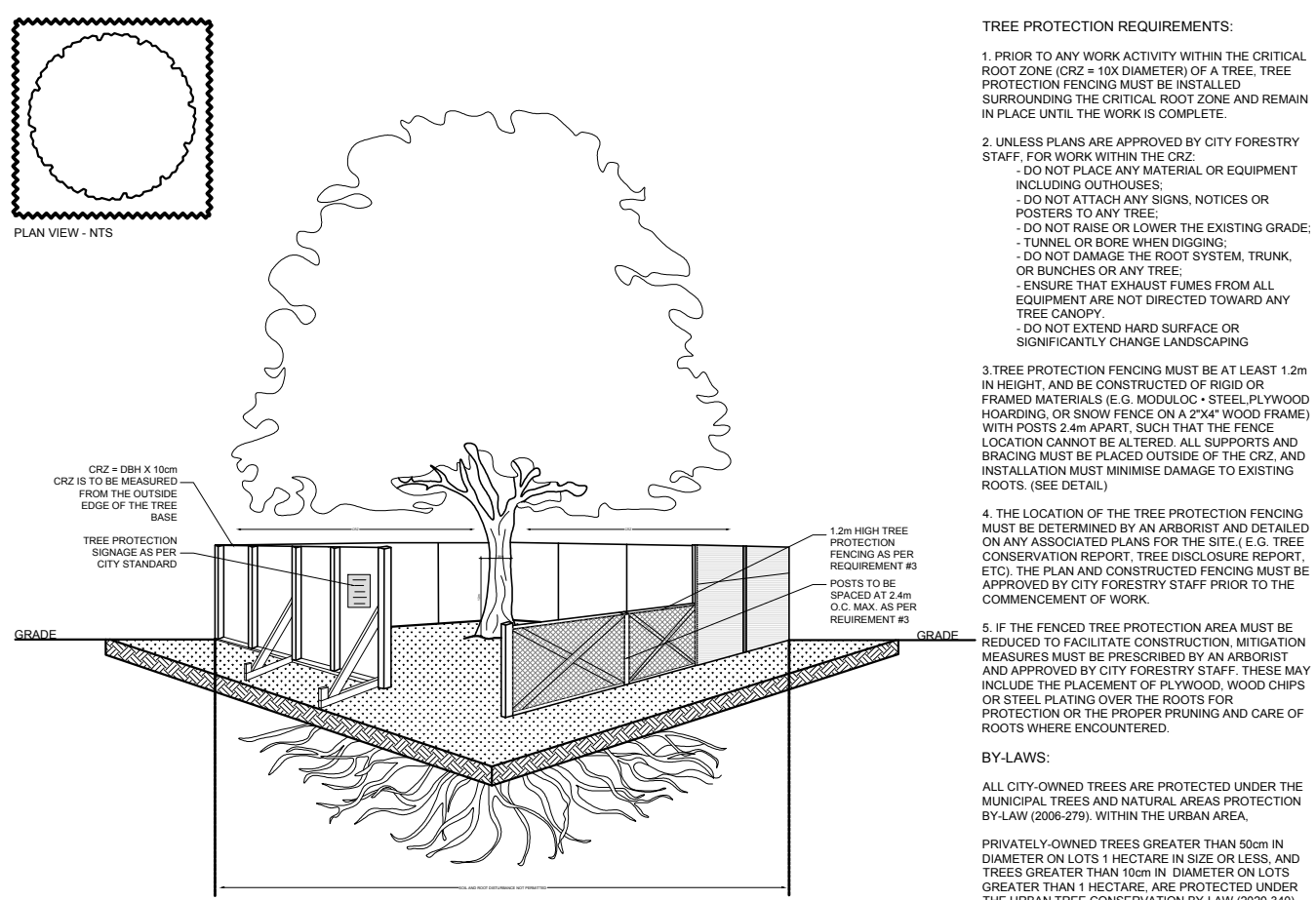
KEY	QTY.	BOTANICAL NAME	COMMON NAME	SIZE	CONDITION	REMARKS	OWNERSHIP	COMMENTS
1	1	<i>Gleditsia triacanthos</i>	Honey Locust	220mm DBH	GOOD	To remain	1925 Merville Rd.	Tree is in good condition
2	1	<i>Gleditsia triacanthos</i>	Honey Locust	140mm DBH	GOOD	To remain	1925 Merville Rd.	Conflicting with new curb
3	1	<i>Gleditsia triacanthos</i>	Honey Locust	440mm DBH	GOOD	To remain	1925 Merville Rd.	Tree is in good condition
4	1	<i>Gleditsia triacanthos</i>	Honey Locust	180mm DBH	GOOD	To remain	1925 Merville Rd.	Tree is in good condition
5	1	<i>Tilia cordata</i>	Littleleaf Linden	310, 330, 360mm DBH	POOR	To be removed	1925 Merville Rd.	Conflicting with new drive aisle, 40% can.
6	1	<i>Tilia cordata</i>	Littleleaf Linden	260, 310mm DBH	POOR	To remain	1925 Merville Rd.	Tree in poor condition, 50% canopy
7	1	<i>Ulmus americana</i>	American Elm	390, 620mm DBH	POOR	To be removed	1925 Merville Rd.	Poor condition. Split leader, 60% can.
8	1	<i>Tilia cordata</i>	Littleleaf Linden	480mm DBH	GOOD	To remain	1925 Merville Rd.	Tree is in good condition
9	1	<i>Tilia cordata</i>	Littleleaf Linden	270, 410mm DBH	GOOD	To remain	1925 Merville Rd.	Tree is in good condition
10	1	<i>Tilia cordata</i>	Littleleaf Linden	580mm DBH	GOOD	To remain	1925 Merville Rd.	Tree is in good condition
11	1	<i>Acer saccharum</i>	Sugar Maple	420mm DBH	FAIR	To remain	1925 Merville Rd.	Tree is in fair condition, 80% can.
12	1	<i>Pinus nigra</i>	Austrian Pine	310mm DBH	GOOD	To be removed	1925 Merville Rd.	Conflicting with new parking lot
13	1	<i>Pinus nigra</i>	Austrian Pine	360mm DBH	GOOD	To be removed	1925 Merville Rd.	Conflicting with new parking lot

KEY	QTY.	BOTANICAL NAME	COMMON NAME	SIZE	CONDITION	REMARKS
<b>TREES</b>						
*FM	2	<i>Acer x freemanii</i>	Freeman's Maple	50mm ø	B&B	Male tree
GB	1	<i>Ginkgo biloba</i>	Maidenhair Tree	50mm ø	B&B	
*HB	2	<i>Celtis occidentalis</i>	Hackberry	50mm ø	B&B	
*HL	2	<i>Gleditsia triacanthos 'Draves'</i>	Street Keeper Honey Locust	50mm ø	B&B	
JL	3	<i>Syringa reticulata</i>	Japanese Tree Lilac	50mm ø	B&B	
<b>SHRUBS</b>						
HY	7	<i>Taxus x media 'Hicksii'</i>	Hick's Yew	1500mm ht.	Potted	Space 600mm O.C.
<b>ORNAMENTAL GRASSES</b>						
BL	44	<i>Leymus arenarius 'Blue Dune'</i>	Blue Lyme Grass	250mm pot	Potted	Space 800mm O.C.
KF	58	<i>Calamagrostis 'Karl Foerster'</i>	Feather Reed Grass	250mm pot	Potted	Space 800mm O.C.
OD	22	<i>Calamagrostis 'Overdam'</i>	Overdam Grass	250mm pot	Potted	Space 800mm O.C.

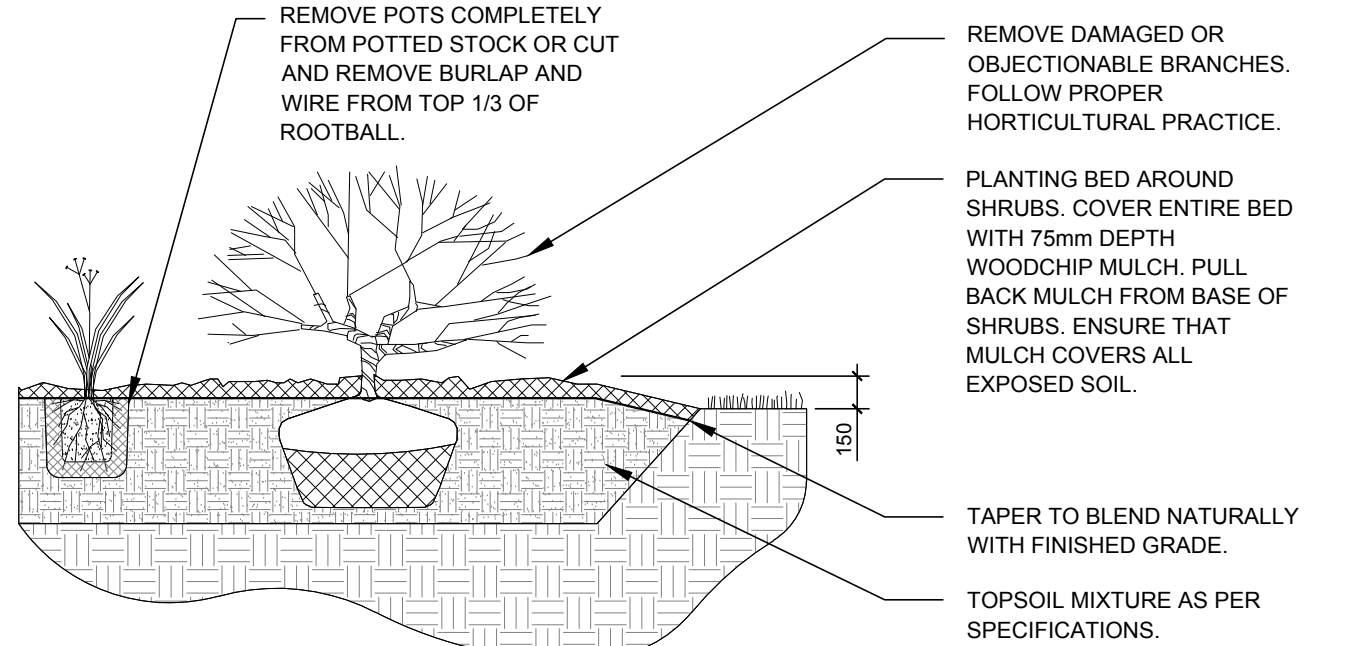
\*Indicates that species is native to Ontario. All vegetation is proposed on private property.



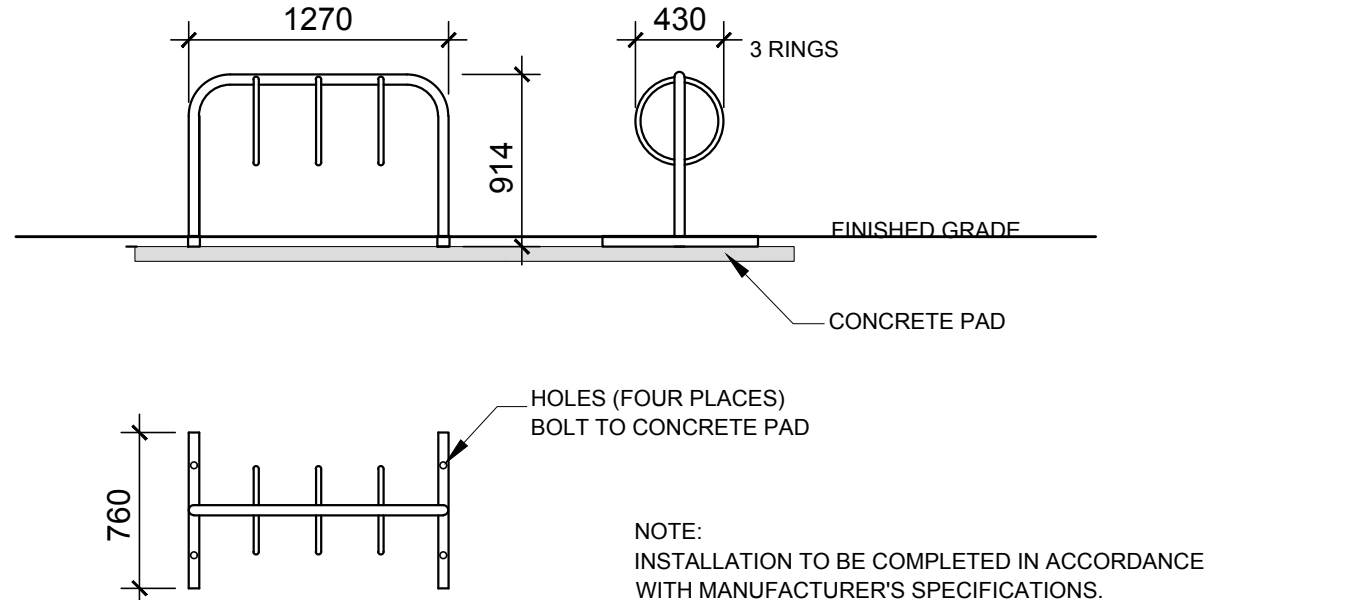
**2 DECIDUOUS TREE PLANTING**  
L.1 SCALE: NTS



**3 TREE PROTECTION FENCE**  
L.1 SCALE: NTS



**4 SHRUB / ORNAMENTAL GRASS PLANTING**  
L.1 SCALE: NTS



**5 THREE RING BIKE RACK**  
L.1 SCALE: NTS

**40 717 m<sup>2</sup> CANOPY CALCULATION:**

6,717 m<sup>2</sup> limit of work

(5) Large Deciduous Trees Proposed (154m<sup>2</sup>ea)  
 (2) Medium Deciduous Trees Proposed (79m<sup>2</sup> ea)  
 (3) Small deciduous trees proposed (7m<sup>2</sup> ea)  
 (1) Large existing tree to remain (154m<sup>2</sup>)  
 (3) Medium existing trees to remain (79m<sup>2</sup> ea)

= 1,261m<sup>2</sup> canopy cover = 18.8% canopy cover

\*Large deciduous tree calculated at 14m spread, and medium trees at 10m spread and small trees at 3m spread

**LEGAL DESCRIPTION**

LOTS 156, 157 & 158 AND PART OF LOTS 125, 126, 127, 128, 129, 130, 131, 132, 133 & 155 AND PART OF CLARKE ROAD (AS CLOSED BY BY-LAW NP51189) REGISTERED PLAN 382 AND PART OF LOT 27, CONCESSION A (RIDEAU FRONT) CITY OF OTTAWA

**PETER DRUMMOND & SON LTD.**

CIVIL ENGINEERS

1430 Carleton Place, Ottawa, ON, K1J 1J2  
 www.lrj.ca | (613) 842-3434

SURVEYORS

**Fairhall Moffatt & Woodland**

1111 Bloor Street West, Ottawa, ON, K1H 1A5  
 (613) 941-5880 FAX: (613) 941-1442  
 www.fmw.on.ca



**LEGEND**

- PROPOSED SODDED GRASS AREA
- PROPOSED RIVERSTONE MULCH (75-100mm DIA. / 3/4 INCH DIA.)
- PROPOSED MULCH
- REQUIRED SOIL VOLUME AT 1.5m DEPTH
- PROPOSED DECIDUOUS TREE
- PROPOSED SHRUBS / ORNAMENTAL GRASSES
- EXISTING TREE TO REMAIN
- EXISTING TREE TO BE REMOVED
- TREE PROTECTION FENCE
- PROPOSED THREE RING BIKE RACK

No.	Issue	Date	ML	JL	DR	CK
1	ISSUED FOR DISCUSSION AND REVIEW	11/05/2025				

**JAMES B. LENNOX & ASSOCIATES INC.**  
 LANDSCAPE ARCHITECTS  
 3332 CARLING AVE. OTTAWA, ONTARIO K2H 5A8  
 Tel: (613) 722-5168 Fax: (866) 343-3942

PROJECT  
 SITE RE-DEVELOPMENT  
 1925 MERIVALE ROAD, OTTAWA ON

DRAWING  
 TREE CONSERVATION REPORT & LANDSCAPE PLAN

STAMP

SCALE  
 AS SHOWN

START DATE  
 OCTOBER 2025

PROJECT NO.  
 25MIS2559

PROJECT NORTH

DRAWING NO.  
**L.1**

PLOT SIZE ARCH-D