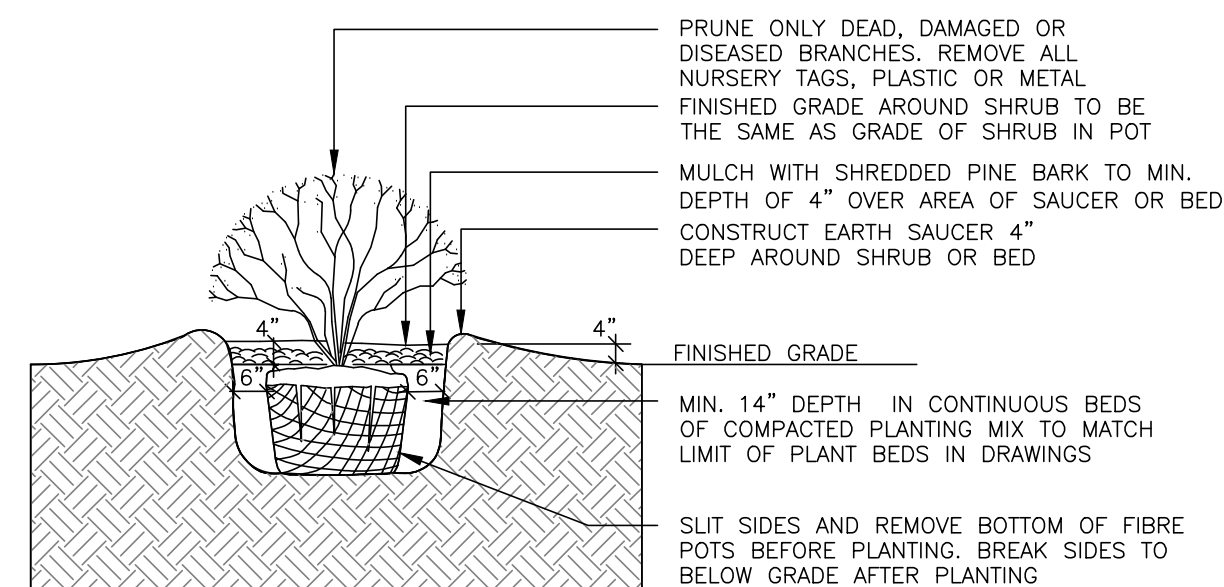
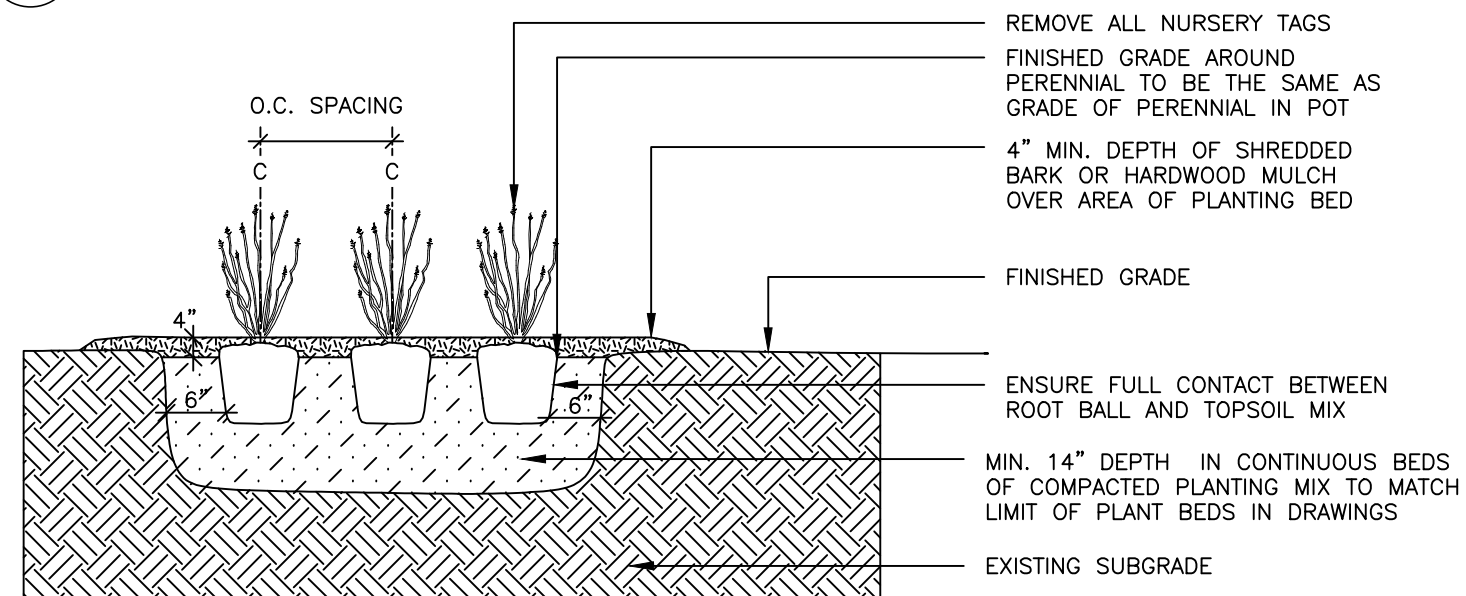


DECIDUOUS TREE PLANTING n.t.s.



SHRUB PLANTING n.t.s.



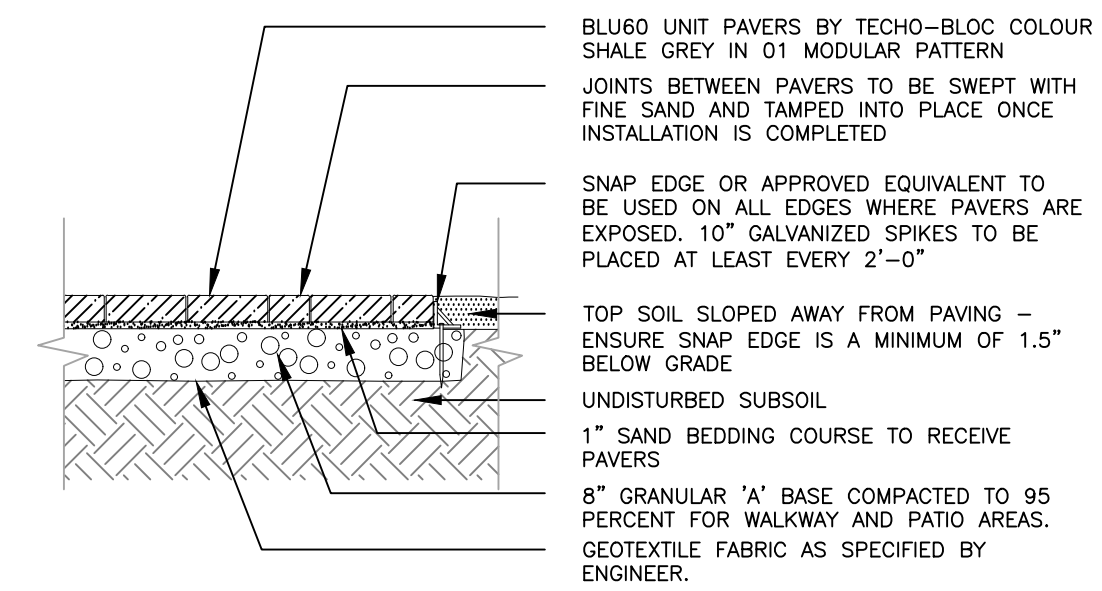
PERENNIAL & ORNAMENTAL GRASS PLANTING n.t.s.



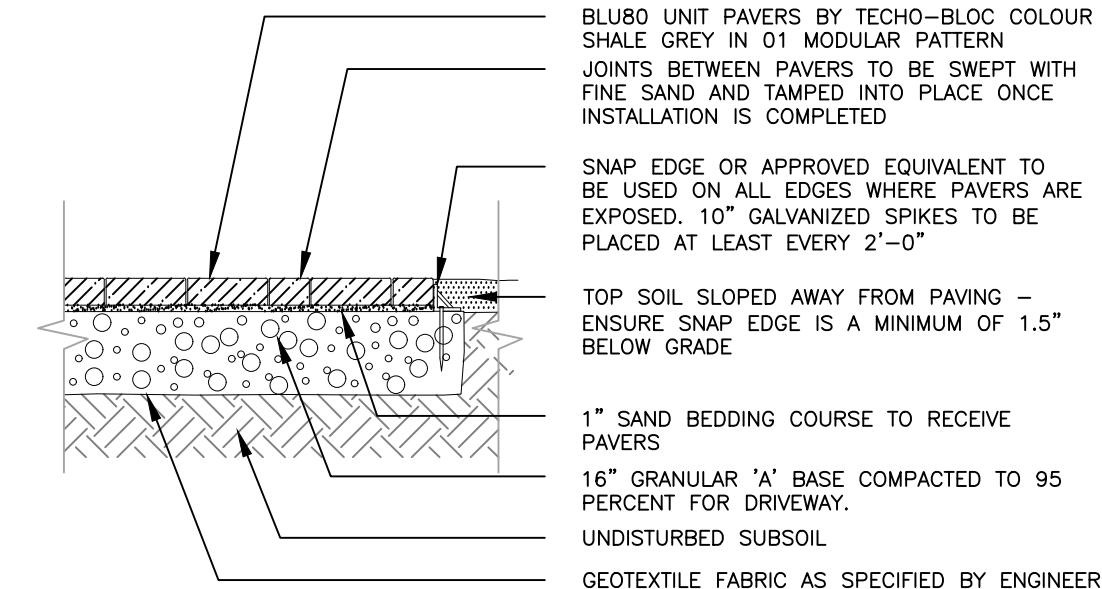
ENTRY SIGN



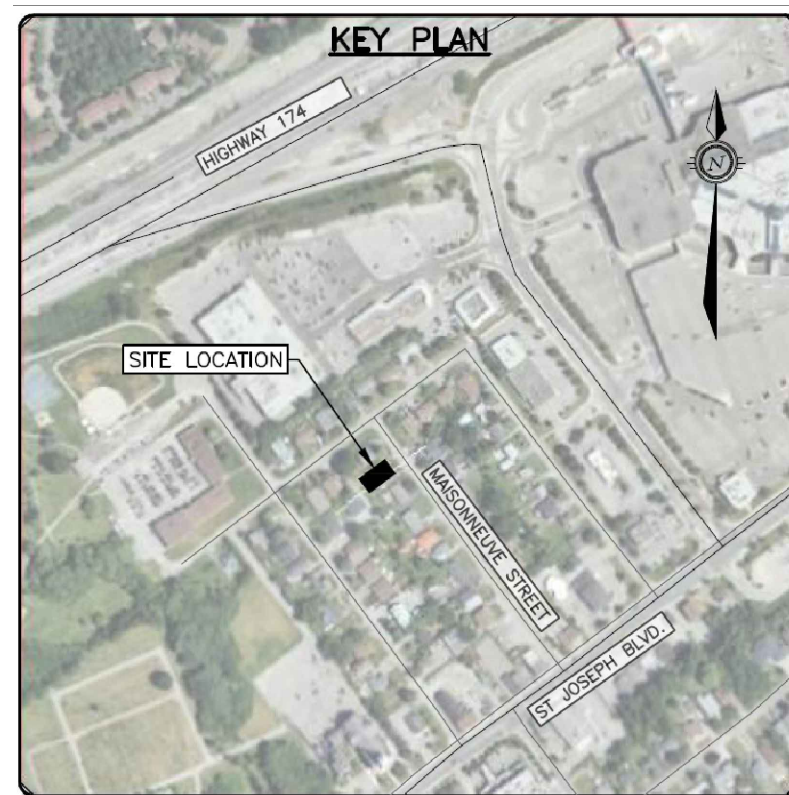
BACKYARD LOUNGE AREA



UNIT PAVING - PATIO & WALKWAYS n.t.s.



UNIT PAVING - DRIVEWAY n.t.s.



40 YEAR CANOPY CALCULATION:

Site Area:	862.80 m ²
Retention Contribution:	0 m ² (no existing trees retained).
Planted Tree Contribution:	Number planted: 4 small trees
Canopy area contribution:	56.45 m ²
Percentage Canopy Cover:	$61.68/862.80 \times 100 = 6.54\%$

Tree planting opportunities are limited on site due to the presence of Marine Clay Soil.

GENERAL NOTES

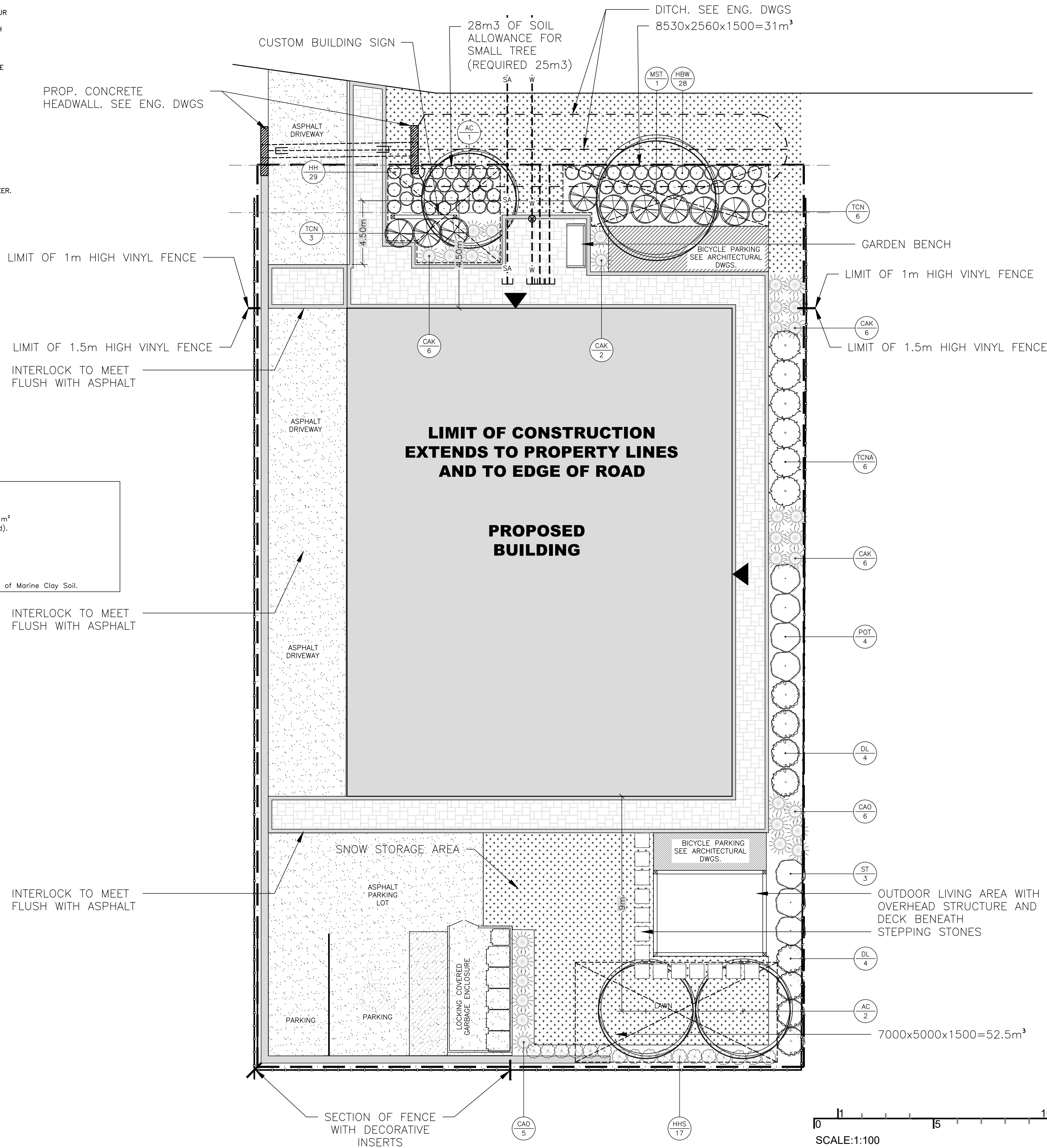
1. THIS PLAN WAS PREPARED IN CONJUNCTION WITH THE GEOTECHNICAL INVESTIGATION FINAL REPORT PREPARED BY EXP SERVICES INC. DATED 2025-02-21.
 2. PLEASE NOTE THIS SITE HAS MEDIUM POTENTIAL FOR SOIL VOLUME CHANGE OF THE SENSITIVE SOILS ON SITE. THEREFORE TREES IN THE FRONT OF THE SITE ARE INDICATED.
 3. THIS PLAN IS TO BE READ IN CONJUNCTION WITH ARCHITECTURAL DRAWINGS AND OTHER CONSULTANTS DRAWINGS. SPECIFICALLY REFLECT TO THE TREE CONSERVATION REPORT PREPARED BY DENDRON, GRADING AND SERVICES PLAN AS WELL AS GEO-TECHNICAL INVESTIGATION REPORT ALL PREPARED BY EXP SERVICES INC.
 4. IT IS THE RESPONSIBILITY OF THE APPROPRIATE CONTRACTOR OR OFFICIAL TO REPORT ANY ERRORS, OMISSIONS OR DISCREPANCIES IN THIS PLAN WITH ACTUAL CONDITIONS OR OTHER CONSULTANT PLANS PRIOR TO COMMENCING WORK. THE LANDSCAPE ARCHITECT IS NOT RESPONSIBLE FOR SUBSURFACE CONDITIONS.
 5. IT IS THE RESPONSIBILITY OF THE APPROPRIATE CONTRACTOR TO OBTAIN ALL REQUIRED PERMITS AND TO OBEY ALL LOCAL BYLAWS AND REGULATIONS.
 6. IT IS THE RESPONSIBILITY OF THE APPROPRIATE CONTRACTOR TO DETERMINE THE LOCATION OF ALL UNDERGROUND SERVICES BEFORE THE START TO INCLUDE: TELEPHONE CABLES, CABLE TELEVISION, GAS, WATER, SLOPE LIGHTS AND SLOPE LIGHTS, WEEPING TIES, STORM AND SANITARY SEWERS, NATURAL GAS LINES, IRRIGATION LINES, ETC.
 7. THE CONTRACTOR IS TO REINSTATE ALL AREAS AND ITEMS DAMAGED AS A RESULT OF CONSTRUCTION ACTIVITIES.
 8. PLANT SUBSTITUTIONS WILL NOT BE ACCEPTED WITHOUT PRIOR APPROVAL OF THE LANDSCAPE ARCHITECT IN WRITING.
 9. POSITIVE DRAINAGE TO BE MAINTAINED AT ALL TIMES AWAY FROM THE BUILDING. THIS DRAWING NOT TO BE USED FOR GRADING. REFER TO ENGINEER'S DRAWING FOR GRADING.
- THIS PLAN WAS PREPARED BY THE SURVEY PLAN PREPARED BY ANNIS OSULLIVAN VOLLEBECK LTD. DATED JULY 13, 2023.

Plant List 1138 Maissonneuve

Trees							
Key	Qty	Botanical Name	Common Name	Size	Cdn	Notes	Ultimate size
AC*	3	Amenlancher canadensis	Serviceberry	50 mm cl	WB	small tree	6m ht 4 m spr
MS*	1	Malus sugar line	Sugar Yume Crabapple	45 mm cl	WB	small tree	8m ht 5 m spr
Shrubs							
Key	Qty	Botanical Name	Common Name	Size	Cdn	Notes	Revisions
TCN	9	Taxus cuspidata 'Nana Aurea'	Dwarf Golden Japanese Yew			2 gal pot	
DL*	8	Diervilla lonicera	Bush Honeysuckle			3 gal pot	
POT	4	Physocarpus opulifolius 'Tiny Wine'	Tiny Wine Ninebark	60 cm ht		3 gal pot	
	3	Spirea tiolata	Dwarf Vanhouttei Spirea	60 cm ht		3 gal pot	
Perennials/Grasses/Groundcovers							
Key	No	Botanical Name	Common Name	Size	Cdn	Notes	Revisions
CAK	22	Calamagrostis acutifolia 'Karl Forester'	Feather Reed Grass			1 gal pot	plant 32" o.c.
CAO	11	Calamagrostis acutifolia 'Overdam'	Vanegated Feather Reed Grass			1 gal pot	plant 24" o.c.
HH	26	Hemerocallis hybrid Stella Supreme	Stella Supreme Daylily			1 gal pot	plant 18" o.c.
HHS*	17	Helipopsis helianthoides	Smooth Oxeye			1 gal pot	plnt 24" o.c.
HBW	28	Hosta Blue Wedgewood	Blue Wedgewood Hosta			1 gal pot	plant 24" o.c.

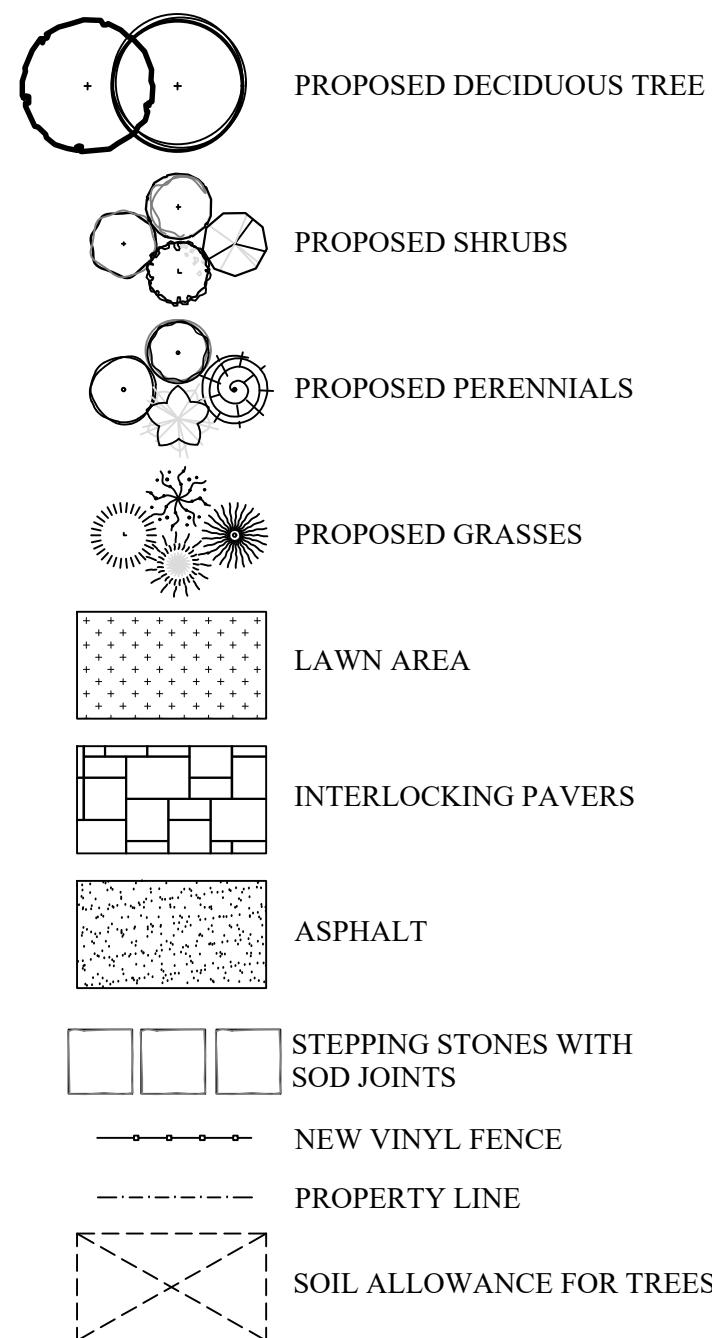
* indicates native plant material
** mature tree size canopy as per www.nvknurseries.com

MAISONNEUVE STREET



DRAWINGS AS AN INSTRUMENT OF SERVICE ARE THE EXCLUSIVE PROPERTY OF THE LANDSCAPE ARCHITECT AND RESERVED BY

LEGEND



(L+D)

LALANDE • DOYLE ARCHITECTS INC.
www.lsdco.com
Tel: 611.213.2000
Fax: 611.213.1006
159 Holland Ave.
Ottawa, Ontario K1V 0Y2

Jain

7405 East Danbro Crescent, 2nd Floor
Mississauga, Ontario, L5N 6P8
Tel: 905 285 9900, Fax: 905 567 5246
Email : mail@jainconsultants.com

exp.

4391 STEVENSON AVE.
#111 ELKINSBURG, NY 11710
200 COLUMBIA DRIVE, UNIT 100
ROCKY HILL, CT 06067
Canada

- BUILDINGS • EARTH & ENVIRONMENT • ENERGY •
- INFRASTRUCTURE • PROCESS INDUSTRIES • TRANSPORTATION

INTUITIVE

135 Laurier Avenue West, Suite 518
Ottawa, ON K1P 5J2
+1 343 308 9274

11	July 24/25	Updates to bicycle parking
10	May 15/25	Updates as per eng. drawings
9	Mar 04/25	Rear garden adjusted and trees added
8	Jan 15/25	Geotechnical report date updated
7	Dec 10/24	Issued for re-submission
6	Dec 09/24	Tree coverage calculation added
5	Oct 31/24	Adjustments to planting
4	Oct 25/24	Minor adjustment to bicycle parking
3	Oct 21/24	Bicycle parking access adjusted
2	Oct 10/24	Revised draft issued for review
1	July 19/24	Preliminary issued for review
No.	Date	Revision note

John K. Szczepaniak

LANDSCAPE ARCHITECT

tel: (613) 731-2777 fax: (613) 731-6989
e-mail: jszla@rogers.com

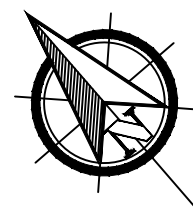


Pulse Societies LTD.
Orleans Development - MSN

1108 Maisonneuve
Ottawa, ON - K1C 1L1

Landscape Plan

CHK: JKS
DRW: EK
DATE: July 08, 2024
ID: 2024-04
SCALE: 1:100



L1