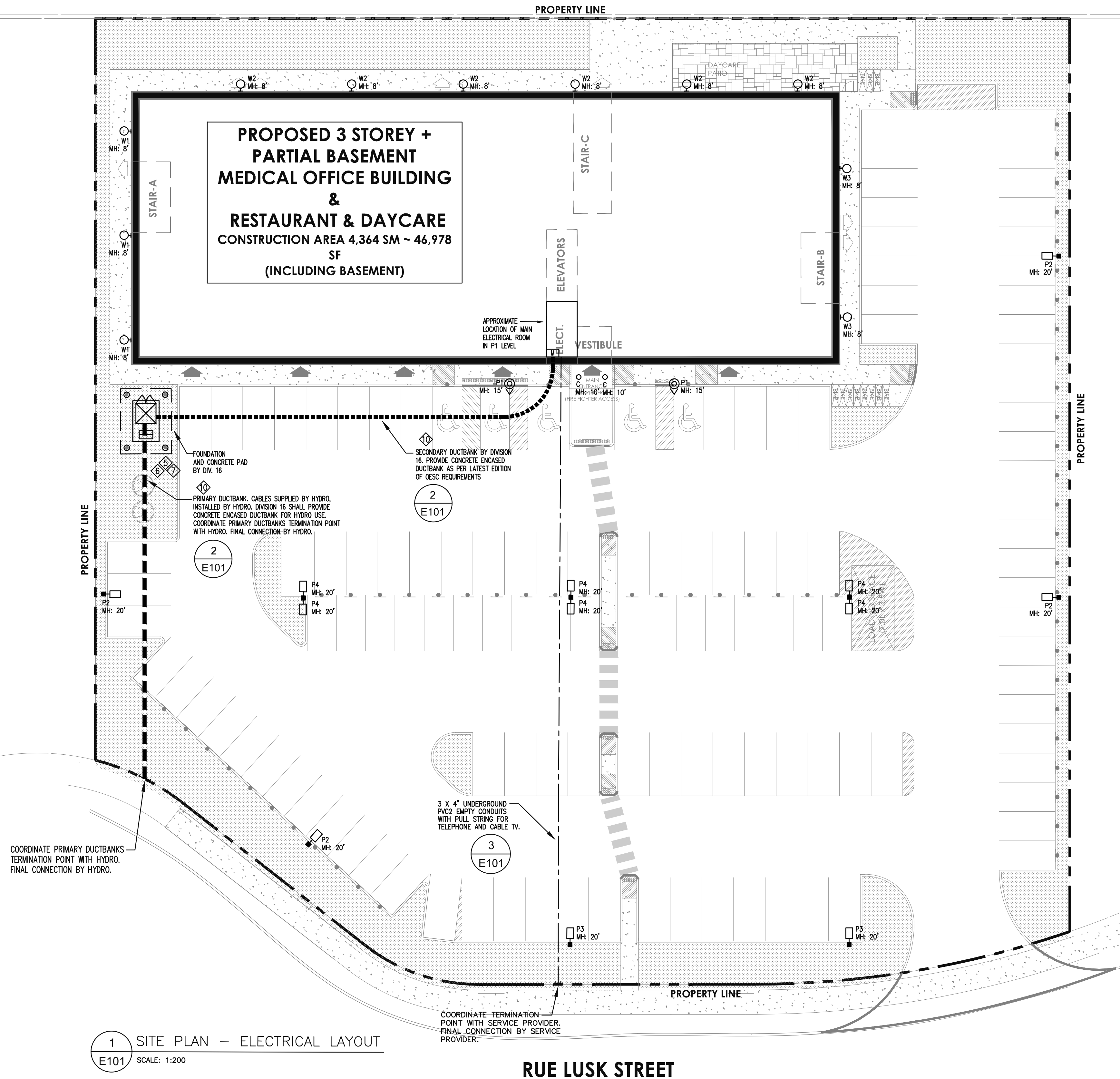
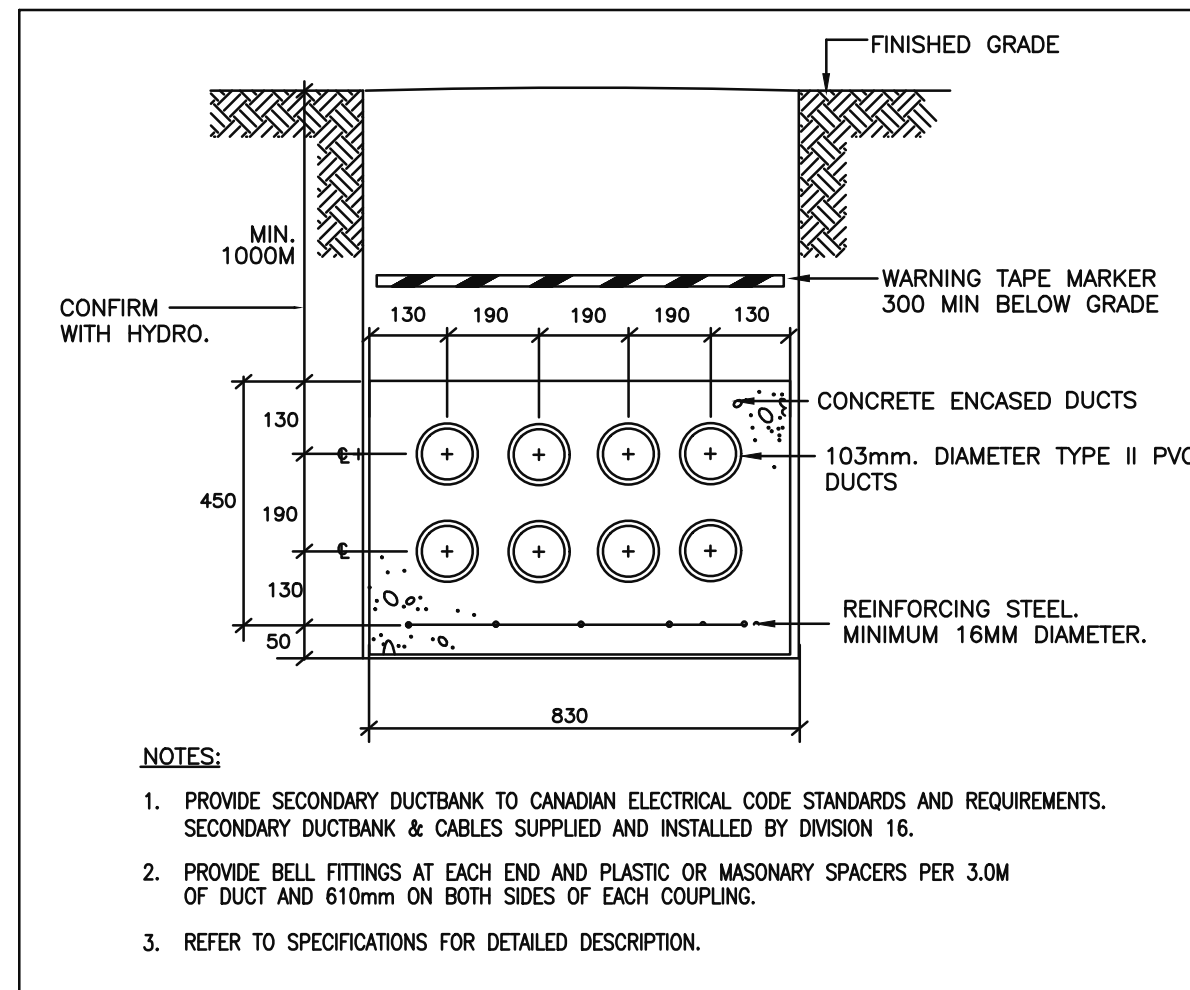


O'KEEFE COURT



1 SITE PLAN – ELECTRICAL LAYOUT

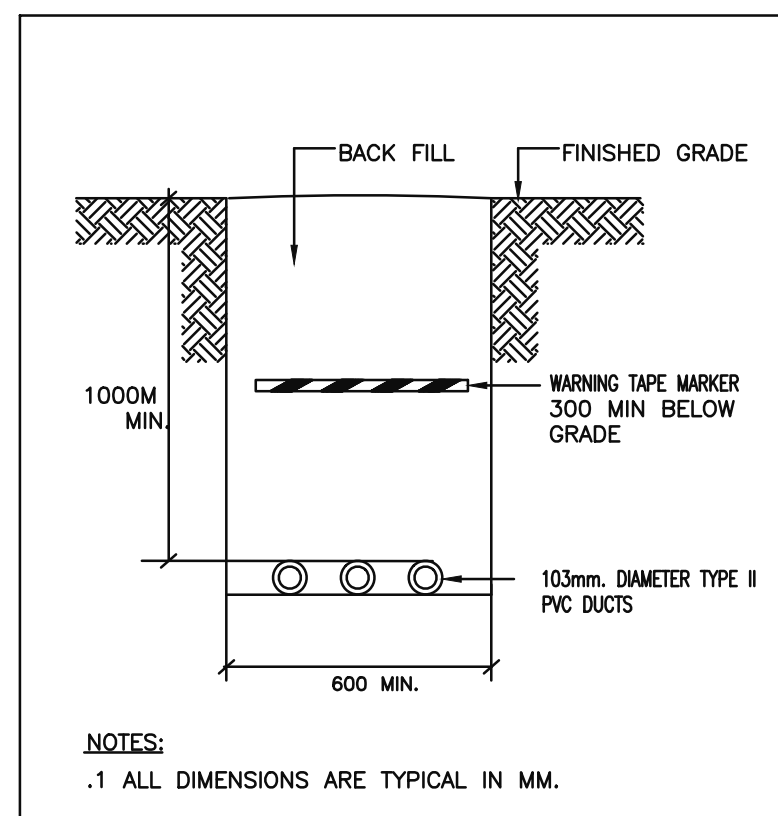
RUE LUSK STREET



- ① RUN MINIMUM #8 AWG WIRING AND TYPE I PVC CONDUITS FOR EXTERIOR LIGHTING POLE, BOLLARDS, WALL PACKS, AND FLAG POLE LIGHTING TO ENSURE NO VOLTAGE DROP EXCEEDS 2.5%.
- ② SUN COUNTRY HIGHWAY MODEL EV40, 40A-2P, LEVEL II EV CHARGER FROM SUNCOUNTRY.
- ③ DETAILS ON THIS DRAWINGS ARE FOR INFORMATIONAL PURPOSES ONLY. ALL TRANSFORMER INSTALLATIONS, DUCTING, AND PERTAINING DEVICES TO BE INSTALLED AS PER HYDRO STANDARDS AND DETAILS. CONTRACTOR TO COORDINATE CLOSELY WITH HYDRO REPRESENTATIVE THROUGHOUT ALL INSTALLATIONS.
- ④ INTERCOM PHONE & CARD READER TO OPEN PARKING OVER HEAD DOOR.
- ⑤ PROVIDE 4 (FOUR) PROTECTIVE BOLLARDS FOR TRANSFORMER (TYPICAL FOR ALL).
- ⑥ PADMOUNT TRANSFORMER BY HYDRO. SEE HYDRO REQUIREMENTS AND DETAILS.
- ⑦ FOUNDATION, PAD, BOLLARDS AND GROUNDING BY ELECTRICAL CONTRACTOR PER HYDRO STANDARDS. SEE HYDRO REQUIREMENTS AND DETAILS.
- ⑧ ALL PRIMARY DUCTBANK INSTALLATION TO BE AS PER HYDRO STANDARDS. CABLES SUPPLIED BY HYDRO, INSTALLED BY CONTRACTOR. CONTRACTOR TO BE IN CONSTANT COORDINATION WITH HYDRO REPRESENTATIVE THROUGHOUT ALL INSTALLATIONS.
- ⑨ DUCT ARRANGEMENT PER HYDRO STANDARDS IS TO BE INSTALLED.

NOTE: ALL TRANSFORMER INSTALLATIONS, DUCTING, AND DEVICES TO BE INSTALLED AS PER HYDRO STANDARDS AND DETAILS. SEE HYDRO STANDARDS AND DETAILS. CONTRACTOR TO COORDINATE CLOSELY WITH HYDRO REPRESENTATIVE THROUGHOUT ALL INSTALLATIONS

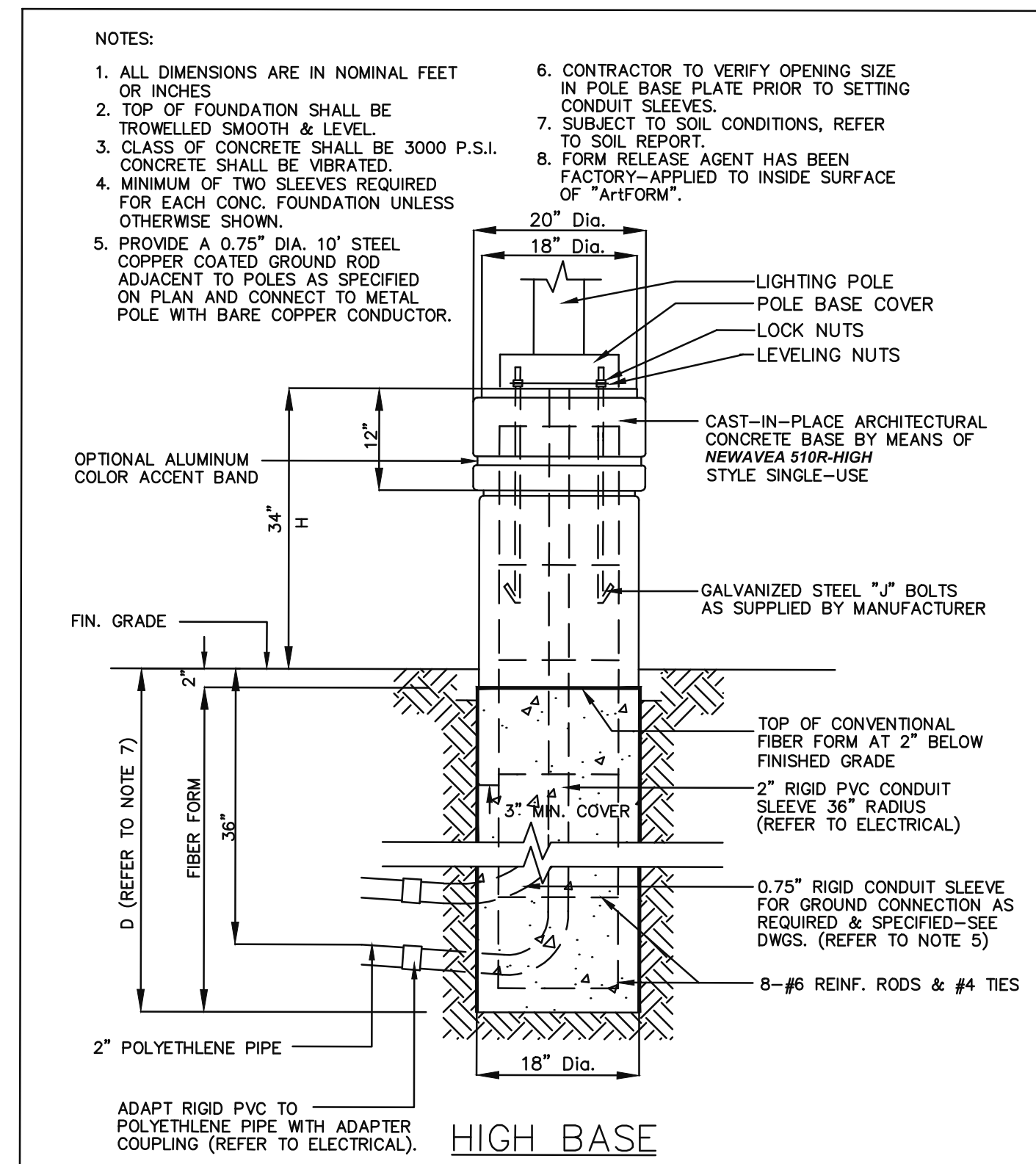
2 PRIMARY/SECONDARY DUCTBANK DETAIL
E101 N.T.S.



- NOTE:
1. ALL NON-CURRENT CARRYING METAL PARTS AT TRANSFORMER SHALL BE CONNECTED TO TRANSFORMER GROUND WITH MINIMUM #1/0 AWG COPPER CONDUCTOR.
 2. ALL METAL STRUCTURES, EQUIPMENT FRAMES/BASIS OF CURRENT CARRY EQUIPMENT WITHIN TRANSFORMER SHALL BE CONNECTED TO TRANSFORMER GROUND WITH MINIMUM #3/0 AWG COPPER CONDUCTOR.
 3. CO-ORDINATE GROUNDING GRID EXACT LOCATION AT SITE.
-
- The diagram illustrates a transformer grounding grid. It features a diamond-shaped structure with four nodes at its vertices. Each node is connected to a vertical line representing a ground rod. An arrow points from the top-right ground rod to the text "#3/0 BARE CU. GROUNDING WIRES (TYPICAL)". Another arrow points from the bottom-right ground rod to the text "3M LONG GROUNDING RODS AS PER CODE".

3 DIRECT BURIED CONDUIT DETAIL
E101 N.T.S.

4 TRANSFORMER GROUNDING DETAIL
E101 N.T.S.



5 LIGHTING STANDARD BASE DETAIL
E101 N.T.S.

2	2024-12-24	ISSUED FOR BUILDING PERMIT
1	2024-11-19	ISSUED FOR SPA
No.	Date:	Issue/Revision

Drawing Issues/Revisions:

Note:



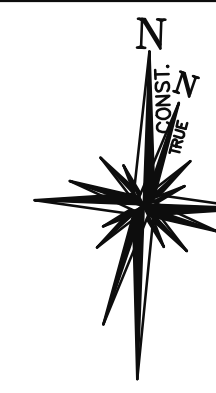
ALL DIMENSIONS AND INFORMATION SHOWN ON THESE DRAWINGS MUST BE CHECKED AND VERIFIED ON SITE AND ANY DISCREPANCIES REPORTED TO THE ARCHITECT PRIOR TO COMMENCEMENT OF CONSTRUCTION AND FABRICATION OF THE COMPONENTS. SHOULD EXISTING CONDITIONS OR SERVICES BE FOUND TO VARY FROM THOSE INDICATED ON THE DRAWINGS, THE ARCHITECT MUST BE NOTIFIED IMMEDIATELY.


FEATURES OF CONSTRUCTION NOT FULLY SHOWN ARE ASSUMED TO BE THE SAME CHARACTER AS THOSE NOTED FOR SIMILAR CONDITIONS.

UNLESS SPECIFICALLY NOTED OTHERWISE ON THE DRAWINGS, NO PROVISION HAS BEEN MADE IN THE DESIGN FOR CONDITIONS OCCURRING DURING CONSTRUCTION. IT SHALL BE THE RESPONSIBILITY OF THE CONTRACTOR TO PROVIDE NECESSARY BRACING, SHORING, SCAFFOLDING, STIFF BRACING OR OTHER TEMPORARY SUPPORTS, TO SAFEGUARD ALL EXISTING OR ADJACENT STRUCTURES AFFECTED BY THE WORK.

ALL DRAWINGS AND RELATED DOCUMENTS SHALL REMAIN THE PROPERTY OF THE ARCHITECT. NO REUSE, REPRODUCTION, OR ALTERATION OF ANY PARTS THEREOF IS PERMITTED WITHOUT THE WRITTEN PERMISSION OF THE ARCHITECT.

USE LATEST REVISED DRAWINGS. DO NOT SCALE DRAWINGS.

 <h1 style="text-align: center;">EJS</h1> <h2 style="text-align: center;">ENGINEERING</h2> <p style="text-align: center;">810 WISPISSING ROAD, 212-214 L7T 4Z9, MILTON, Ontario</p> <p style="text-align: center;">Tel: 647 945 8484 Fax: 905 216 0898 Email : elias@ejsengineering.ca Website: www.ejsengineering.ca</p>	
	
Project Stamp	Project North: True North:



MATAJ

ARCHITECTS INC

MATAJ ARCHITECTS INC.

418 Incoquois Shore Road, Unit 205,
Oakville, ON
L6H 0X7
T: 905.281.4444

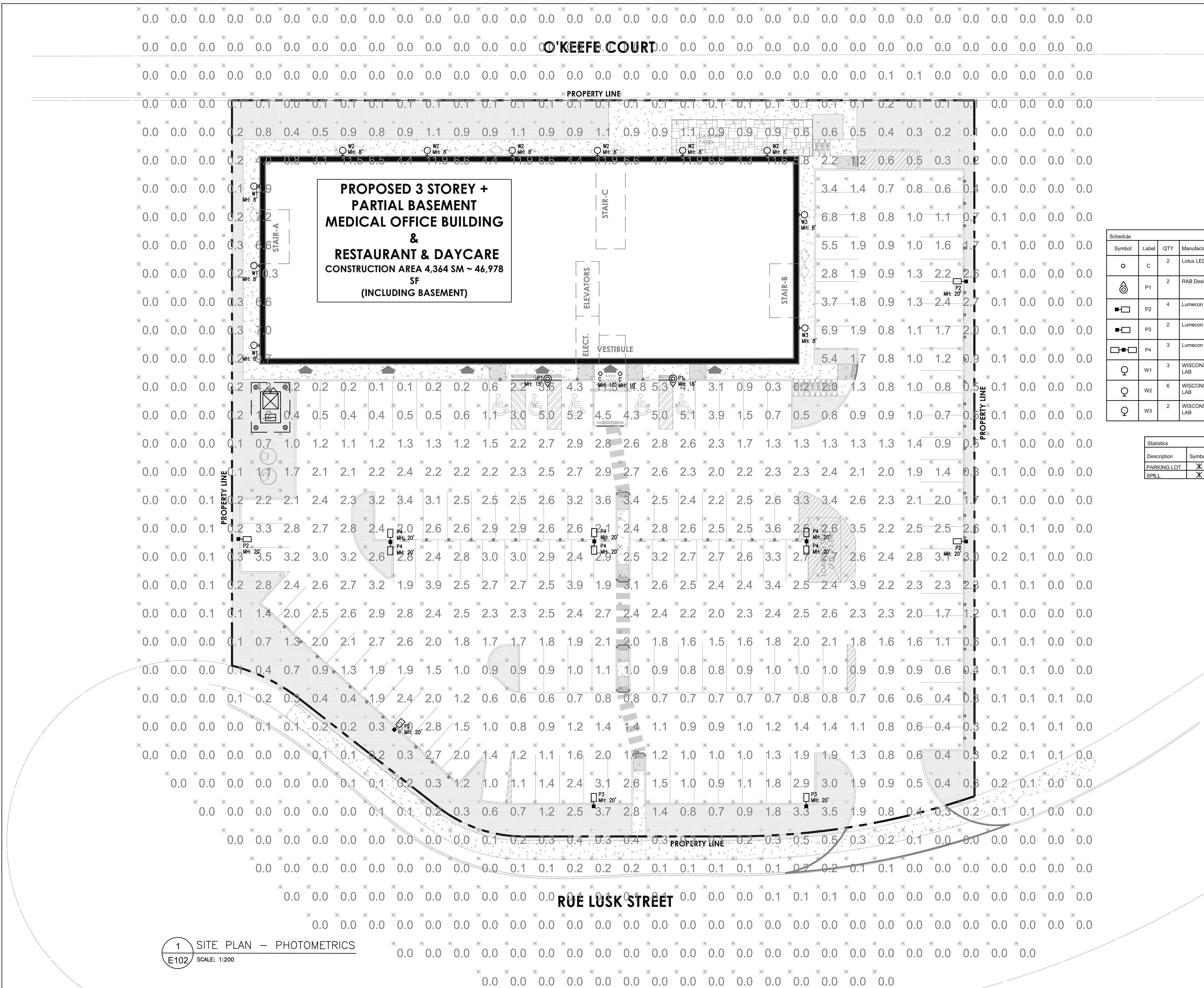
Client:
Dr. Sandra Iroakazi

Project:
LUSK MEDICAL BUILDING
120 LUSK STREET OTTAWA, ON
File#: D07-12-24-0176 Plan Number #19330

SITE PLAN - ELECTRICAL LAYOUT


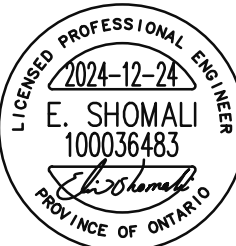
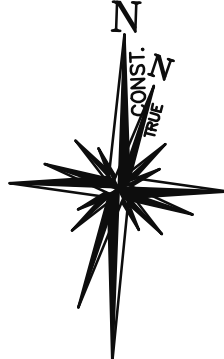

Design By: N.P.	Drawn By: N.P.	Approved By: G.S.
Scale: AS SHOWN	Date:	Project No.: 35-24

Drawing No:	E101	Of:
Drawing Series:		



2	2024-12-24	ISSUED FOR BUILDING PERMIT
1	2024-11-19	ISSUED FOR SPA
No.	Date:	Issue/Revision
Drawing Issues/Revisions:		

Note:
 ALL DIMENSIONS AND INFORMATION SHOWN ON THESE DRAWINGS MUST BE CHECKED AND VERIFIED ON SITE AND ALL DISCREPANCIES REPORTED TO THE ARCHITECT PRIOR TO CONSTRUCTION AND FABRICATION OF THE COMPONENTS. SHOULD EXISTING CONDITIONS OR SERVICES BE FOUND TO VARY FROM THOSE INDICATED ON THE DRAWINGS, THE ARCHITECT MUST BE NOTIFIED IMMEDIATELY.
 FEATURES OF CONSTRUCTION NOT FULLY SHOWN ARE ASSUMED TO BE THE SAME CHARACTER AS THOSE NOTED FOR SIMILAR CONDITIONS.
 UNLESS SPECIFICALLY NOTED OTHERWISE ON THE DRAWINGS, NO PROVISION HAS BEEN MADE IN THE DESIGN FOR CONDITIONS OCCURRING DURING CONSTRUCTION. IT SHALL BE THE RESPONSIBILITY OF THE CONTRACTOR TO PREPARE AND MAINTAIN ADEQUATE PROTECTION, SHEET PILING OR OTHER TEMPORARY SUPPORTS, TO SAFEGUARD ALL EXISTING OR ADJACENT STRUCTURES AFFECTED BY THIS WORK.
 ALL DRAWINGS AND RELATED DOCUMENTS SHALL REMAIN THE PROPERTY AND COPYRIGHT OF THE ENGINEERING FIRM. NO PARTS OF THESE DRAWINGS OR USE LATEST REVISED DRAWINGS, DO NOT SCALE DRAWINGS.

 <p>ENGINEERING</p> <p>810 NIPISSING ROAD, 212-214 L9T 4Z9, MILTON, Ontario Tel: 647 945 8484 Fax: 905 216 0898 Email : elias@ejsengineering.ca Website: www.ejsengineering.ca</p>	
	
ENGINEER STAMP	Project North: _____ True North: _____
 <p>MATAJ ARCHITECTS INC.</p> <p>418 Jacques Shore Road, Unit 206 OAKVILLE, ON L6H 0X7 T. 905.281.4444</p>	

Client:
Dr. Sandra Iroakazi

Project:
LUSK MEDICAL BUILDING
120 LUSK STREET OTTAWA, ON
File#: D07-12-24-0176 Plan Number #19330

Sheet Title:		
<h1>SITE PLAN</h1> <h2>- PHOTOMETRICS</h2>		
Design By:	Drawn By:	Approved By:
N.P.	N.P.	G.S.
Scale:	Date:	Project No.:
AS SHOWN		35-24
Drawing No:		Of:
<h1>E102</h1>		
Drawing Set:		

TYPE P2, P3, P4

Lumecon | DETROIT SERIES



LDS - SAL
LED Small Area Light

Catalog Number:	
Project:	
Comments:	
Prepared By:	Date:

Description

The sleek future design of the LDS-SAL is a blend of modern sophistication and unmatched energy efficiency. The LDS-SAL small area light includes the benefits of superior thermal efficiency, an industry-leading 5-year aluminum warranty, and custom optics ensuring best-in-class photometric results. Optimize photometric designs with greater pole spacing, uniformity, and lower energy usage. The LDS-SAL includes lumen packages up to 30,000 lumens allowing one-for-one replacements of existing HID fixtures up to 1000 Watt and is a perfect spec-grade solution for parking lots, pathways, tennis courts, and many other outdoor applications. Proudly Made in the USA.

Technical Specifications

Input Voltage: 120-277V or 347-480V

Housing: Die-cast aluminum housing with 80% gloss polyester powder coat finishes for maximum durability. The base aluminum material is prepared using an environmentally-friendly non-chrome 2-step surface cleaning and passivation process. The process results in a more durable conversion layer than traditional chrome conversion coatings and allows maximum adhesion of the powder coating to the aluminum substrate. Housing features an integrated heat sink and driver compartment built into the fixture design.

Mounting: Mounting arm designed for a square / round pole (standard). Additional mounting options include a pole mounting arm adaptor.

Split Circuit: Optional

Effective Projected Area (EPA): 0.83 ft²

Color Temperature: 2000K, 2700K, 3000K, 4000K (standard), 5000K

LED Lifetime: All LEDs are rated for a minimum of 100,000 hours of continuous operation at ambient outdoor temperatures from -40°F/-40°C to 115°F/46°C.

Color Rendering Index (CRI): Minimum of 80 or higher. CRI 90+ available upon request. CRI 90+ not available in 2000K.

Dimming: 0-10V standard dimming capability.

Custom Optics: Lumecon meticulously engineered premium acrylic optical lenses to maximize the distribution and uniformity of light while mimicking cost. Our arrays distribute light at least 2 1/4" further and with 20% more uniformity than leading competitors. Lumecon custom lenses create a uniform, spill-free environment that mitigates luminance "hot spots" and uses less wattage than typical LED area lights.

Vandal Resistant: Our lens is also resistant to vandalism with a low compact design making the lens material dense and impact resistant. We build to withstand high abuse lighting environments.

Surge Protection: Thermally protected 20kV 40kA varistor type surge suppressor is included and meets ANSI C136.2-2015, Extreme Level. Also meets ESD1645-11 Class II (EN61643-11 Type 2, and US Dept of Energy MSRLC Model Spec for surge protection. The device is wired to series with the luminaire input power in order to internal power to the luminaire when consumed, protecting the LED power supply and circuit boards from additional electrical surges.

Email: sales@lumecon.com Website: www.lumecon.com Phone: 348-477-0009
Copyright © 2022 Lumecon LLC All Rights Reserved.
Note: Specifications and dimensions are subject to change at any time without notice.
Please see www.lumecon.com for current specifications and documentation. (Type: LDS-SAL_030224)



TYPE W1, W2, W3

NAFCO® PRODUCT FAMILY

Proudly engineered and manufactured in Wisconsin, USA – our NAFCO® family of LED lighting products combines 50 years of manufacturing expertise with premium components and top-notch Midwestern workmanship. From high-output outdoor applications to extreme indoor industrial environments – NAFCO® series products drastically reduce energy consumption and maintenance costs and come supported by WILL's unmatched design, engineering, and project support capabilities.

- Output options over 30,000 lumens
- Properly black anodized heat sink for maximum thermal dissipation and low LED junction temperature
- True Amber and Phosphor Converted (PC) Amber premium LED chip options
- High-grade aluminum enclosure for superior corrosion resistance, strength, and thermal management
- Premium tier1 LED chips and optics for extreme efficiency and high-quality color rendering for a broad range of applications
- Wireless and onboard control options including motion, photo, dimming, daylight harvesting, zones, and schedules
- Recessed light engine design with zero uplight rating (0u)

NAFCO® WCX

Wall Mount LED Lighting



TYPE C

Light Lotus



DL254-6-30W-M-A5C5-HO
6" Round Commercial 5 CCT & 5 Wattage Selectable

Project:	
Location:	
Model:	Qty:
Notes:	

SPECIFICATION	
Applications	Commercial Recessed Ceiling
Power Levels (W)	CCT / W 12 16 22 26 30
Light Output (lm)	2700K 1310 1760 2380 2750 3010
	3000K 1350 1820 2390 2760 3200
	3500K 1420 1920 2530 2920 3390
	4000K 1460 1970 2580 2970 3410
Color Temperature (K)	5000K 1510 2020 3500 3800 3450
	5CCT user selectable: 2700-3000-3500-4000-5000 K
Beam Angle	85°
CRI	80
Input	120V-347V AC 50/60 Hz
Dimming	0 - 10V
Approved Location	Insulated Ceiling & Wet Locations
Air Tight	Yes
Ambient Temperature	-4°F (-20°C) to +104°F (+40°C)
Projected Life	70K Light Output at 50,000 Hours
Certification	cETLus
Warranty	5 Year

Trim Options - Matte White and Alzak in stock, other trims available by custom order



- ACCESSORIES - Sold Separately. Please note that junction box is not included**
- Black trim cover model # LBL-SCRT-B
 - Silver trim cover model # LBL-SCRT-S
 - Goof Ring White OD 10 1/2" model # LBL-GCR-W
 - New Construction Mounting Plate for Stud Ceiling model # LBL-MP-C4-8-STUD
 - New Construction Mounting Plate for T-bar Ceiling model # LBL-MP-C4-10-TBAR
 - Emergency Driver BW 120-347V input model # BLD-HM80-YY

COMPLIANCE
Type IC & Air-Tight Wet Location

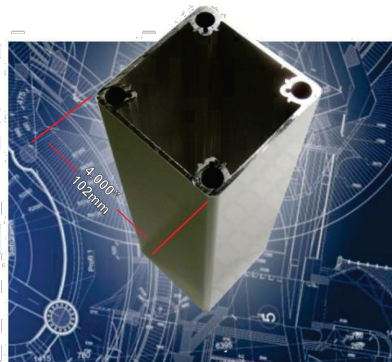
ORDERING GUIDE
DL254-6-30W-M-A5C5-HO White Trim White Reflector
DL254-6-30W-M-A5C5-HO-AZ White Trims Silver Reflector (Alzak)

Light Lotus USA
2501 Street # 301, Baine WA 98230 tel 360-200-5500
Hainesport NJ, Naples FL, Vancouver WA

www.lotusledlights.com
mailing addresses
warehouses

Lotus LED Lights CANADA
1080 Cliveden Ave # 6, Delta BC V4M 6G6 tel 604-538-3100
Delta BC & Mississauga ON

POLE



POLE: (Not Welded)
Extruded aluminum high strength alloy shaft with 35,000 PSI maximum yield. Multiple internal support structure designed to increase load capacity and greatly reduce pole movement and vibrations. All exposed fasteners are stainless-steel

Standard Base:
4 Bolt cast aluminum base high strength 713 alloy, full modular
9'000" to 8'000" B.C.D.

Optional Multi base
4 Bolt cast aluminum base high strength 713 alloy, full modular1
8'000" to 12'000" B.C.D

Anchor Assembly (AA8)
4 - 5/8" x 18" L-bolts c/w Wood positioning template
5.657" 144mm

Height ft (m)	EPA. Wind						Weight lbs(Kgs)
	Velocity 70	80	90	100	120	150	
10 (3.7)	9.9	7.6	6.0	4.8	3.1	2.1	32 (10)
16 (4.7)	6.2	4.7	3.7	3.0	2.1	1.3	44 (15)
20 (6.1)	4.6	3.5	2.8	2.2	1.5	1.0	55 (20)
24 (7.2)	3.8	2.9	2.3	1.9	1.3	0.8	63 (28)

EPA calculations to AASHTO with 1.3 gust factor

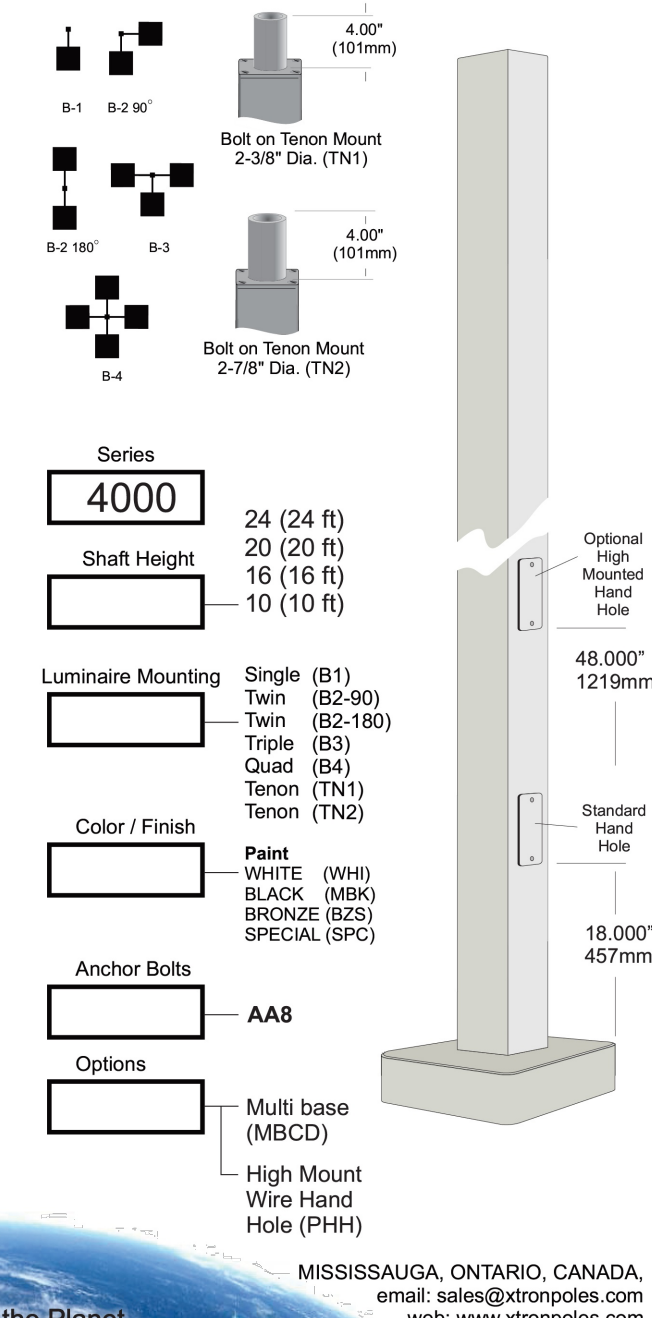
Certified to Canadian and US electrical safety standards for "Wet Location"

X-Tron
Poles / LED lighting

Strongest Poles on the Planet

4000 Series Lighting Poles

- Modular construction
- Light weight, ultra strong
- Low vibration
- Zero maintenance
- 20 Year structural warranty



TYPE P1

Project:
Type:
Date:
Notes:

SKY2S-LED
LED Area light

Direct Pole Mount

Surface Mount

Post Top Mount

The SKY2S-LED series are performance area light with selectable features ideal for a wide range of applications including commercial and retail parking lots, car dealerships, and roadway lighting.

IDEAL APPLICATIONS

- Car Dealerships
- Parking Lots
- Courtyards

SPECIFICATIONS

	SKY2S-LED80A40	SKY2S-LED150A100	SKY2S-LED80A40	SKY2S-LED150A100
PERFORMANCE			CONSTRUCTION	
Light Output	10000/7500/5000 lm (Lumen Selectable)	18700/15000/12500 lm (Lumen Selectable)	Housing	Die-cast Aluminum
Efficacy	125 lm/W		Lens	Semi-frosted polycarbonate
CCT	4000/5000K (CCT Selectable)*, 3000K		Paint Finish	Weather and corrosion resistant polyester powder coat finish
Beam Distribution	Symmetrical Wide Asymmetrical Elliptical Horizontal Elliptical Vertical		AMBIENT OPERATING TEMPERATURE	-40°C to +55°C
LED Lifetime (L70)	>110,000 Hrs		MOUNTING	
CRI	80		Direct Pole Mount, Surface Mount (Canopy/Garage)	
B-U-G	B4-U0-G3		CERTIFICATIONS	
Wattage	80/60/40W	150/120/100W	cETLus certified as per UL1598 & CSA C22.2 NO 250.0-21	
Voltage	120-347V		DLC Premium	
Surge Protection	10kV External Standard as per UL1449		CONTROLS	
Power Factor	0.95		0-10V Dimming (Dim to Off)	
THD	6.8%		Twist lock Photocell, SPIN, TPIN, Microwave Motion Sensor	
Supply Cord	600V, STW (5x18 AWG)		PCLS (Photocell, CCT, Lumen Select)	

All reported values were tested at 277V and 4000K and shown for the highest lumen setting

*Standard Configuration

Default Setting: Highest lumen, 4000K

RAB Design Lighting Inc. | 1-222 Islington Avenue, Toronto, ON, M8V 3W7 | 1-800-268-0381 | rabdesign.ca **04 | 2024**

Note:
ALL DIMENSIONS AND INFORMATION SHOWN ON THESE DRAWINGS MUST BE CHECKED AND VERIFIED ON SITE AND ANY DISCREPANCIES REPORTED TO THE ARCHITECT PRIOR TO CONSTRUCTION AND FABRICATION OF ITS COMPONENTS. SHOULD EXISTING CONDITIONS OR SERVICES BE FOUND TO VARY FROM THAT INDICATED ON THE DRAWINGS, THE ARCHITECT MUST BE NOTIFIED IMMEDIATELY.

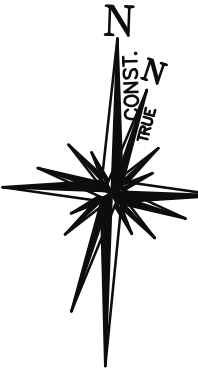
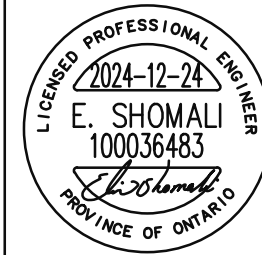
FEATURES OF CONSTRUCTION NOT FULLY SHOWN ARE ASSUMED TO BE THE SAME CHARACTER AS THOSE NOTED FOR SIMILAR CONDITIONS.

UNLESS SPECIFICALLY NOTED OTHERWISE ON THE DRAWINGS, NO PROVISION HAS BEEN MADE IN THE DESIGN FOR CONDITIONS OCCURRING DURING CONSTRUCTION. IT SHALL BE THE RESPONSIBILITY OF THE CONTRACTOR TO PROVIDE ALL NECESSARY BRACING, SHORINGS, SHEET PILING OR OTHER TEMPORARY SUPPORTS, TO SAFEGUARD ALL EXISTING OR ADJACENT STRUCTURES AFFECTED BY THIS WORK.

ALL DRAWINGS AND RELATED DOCUMENTS SHALL REMAIN THE PROPERTY AND COPYRIGHT OF EJS ENGINEERING INC. USE LATEST REVISED DRAWINGS. DO NOT SCALE DRAWINGS.



ENGINEERING
810 NIPISSING ROAD, 212-214
L9T 4Z9, MILTON, Ontario
Tel: 647 945 8484 Fax: 905 216 0898
Email: elias@ejsengineering.ca
Website: www.ejsengineering.ca



ENGINEER STAMP Project North: True North:



MATAJ ARCHITECTS INC.
418 Iroquois Shore Road, Unit 206,
OAKVILLE, ON L6H 0V7
T. 905.281.4444

Client:
Dr. Sandra Iroakazi

Project:

LUSK MEDICAL BUILDING

120 LUSK STREET
OTTAWA, ON

File#: D07-12-24-0176
Plan Number #19330

Sheet Title:

SITE PLAN - LIGHTING TYPES & CUTSHEETS

Design By: N.P.	Drawn By: N.P.	Approved By: G.S.
Scale: AS SHOWN	Date:	Project No.: 35-24

Drawing No:

E103

Of:

Drawing Series: