

1 CANOPY COVERAGE & SOIL VOLUMES
L - 02 Scale: 1:1200

Soil Volume Area, Tree Quantity and Size	Tree Quantity	OTTAWA Target Soil Volume (m ³)	Design Soil Volume	Soil Adequacy percentage	%Soil to be supplied by contractor
AREA A - 4 Medium trees plant bed (298 sq m x 0.4 ave metre deep)	4	120.0	119.2	99%	2
AREA B - 2 Medium, 1 Small Trees plant bed (131 sq m x 0.4 ave metre deep)	3	55.0	52.4	95%	2
AREA B 1 - 4 Medium trees plant bed (241 sq m x 0.4 ave metre deep)	4	100.0	96.4	96%	1
AREA C - 3 Small trees plant bed (65 sq m x 0.7 ave metre deep)	3	45.0	45.5	101%	1
AREA D - 2 Large, 1 Small, 3 Existing trees plant bed (430 sq m x 0.4 ave metre deep)	6	119.0	172.0	145%	3
AREA E - 8 Large, 4 Medium, 4 Small, 1 Coniferous trees plant bed (1253 sq m x 0.4 ave metre deep)	17	350.0	501.2	143%	4
AREA E1 - 4 Large trees plant bed (342 sq m x 0.4 ave metre deep)	4	100.0	136.8	137%	4
AREA E2 - 5 Large, 8 Coniferous trees plant bed (936 sq m x 0.4 ave metre deep)	13	269.0	374.4	139%	4
AREA F - 1 Medium, 2 Small trees plant bed (105 sq m x 0.5 ave metre deep)	3	48.0	52.5	109%	1
AREA G - 8 Large, 9 Existing trees plant bed (1296 sq m x 0.4 ave metre deep)	17	362.0	518.4	143%	3
AREA G1 - 3 Small trees plant bed (51.6 sq m x 0.9ave metre deep)	3	45.0	46.4	103%	1
AREA G2 - 1 Small tree plant bed (78.5 sq m x 0.4ave metre deep)	1	25.0	31.4	126%	1
AREA G3 - 7 Medium, 1 Small trees plant bed (479 sq m x 0.4ave metre deep)	8	144.0	191.6	133%	1
AREA H - 4 Large, 1 Medium, 1 Small trees plant bed (414 sq m x 0.4ave metre deep)	6	133.0	165.6	125%	3
AREA H1 - 5 Medium, 3 Small trees plant bed (480 sq m x 0.4ave metre deep)	8	144.0	192.0	133%	1
AREA H2 - 1 Large, 3 Large Columnar, 6 Medium trees plant bed (727 sq m x 0.4ave metre deep)	10	180.0	290.8	162%	1
AREA I - 15 Large, 3 Medium, 3 Small, 27 Coniferous trees plant bed (3650 sq m x 0.4ave metre deep)	51	1035.0	1460.0	141%	4
AREA J - 1 Medium trees plant bed (126 sq m x 0.4ave metre deep)	1	30.0	50.4	168%	1
AREA J1 - 2 Ornamental trees plant bed (42 sq m x 0.6ave metre deep)	2	24.0	25.2	105%	1
AREA K - 6 Large, 16 Medium, 13 Coniferous trees plant bed (2862 sq m x 0.4ave metre deep)	45	672.0	1144.8	170%	4

* Smaller columnar trees, small ornamental trees with growth to 8-15cm DBH, large shrubs, and columnar conifers calculated using 'How much soil to grow a big tree' by DeepRoot as a guide

- LEGEND
- EXISTING TREES TO BE PRESERVED
 - PROPOSED TREES
 - TP TREE PROTECTION FENCE

TREE CANOPY COVERAGE		
TOTAL CANOPY AREA	13154.91	m2
TOTAL SITE AREA	73966	m2
PERCENT COVERAGE	17.79%	

NOTES:
PLANTING MEDIUM REQUIREMENTS FOR TREE PLANTING

1 WHERE SOIL VOLUMES ARE WITHIN EXCAVATED DEVELOPMENT AREA:
PROVIDE 100% PLANTING MEDIUM TO DEPTHS INDICATED IN SOIL VOLUME CHART.
WHERE SUBSOIL BELOW THE INDICATED DEPTH OF PLANTING MEDIUM IS NOT CONDUCTIVE TO PLANT GROWTH, REPLACE WITH APPROVED SUBSOIL TO A FURTHER DEPTH OF 300mm.

2 WHERE SOIL VOLUMES INCLUDE SOIL VOLUMES IN R.O.W. AT PROPERTY LINE
R.O.W. AND WITHIN SUBJECT PROPERTY:
ASSUME ALL SOIL VOLUME REQUIREMENTS ARE MET WITHIN THE R.O.W. AREA. REINSTATE ANY DISTURBED AREAS IN R.O.W. OUTSIDE THE 2m RADIUS TREE PITS WITH 100-150mm TOPSOIL AND SOD.
PLACE PLANTING MEDIUM (TO DEPTH INDICATED ON SOIL VOLUME CHART) AT ALL DISTURBED AREAS WHERE EXISTING SOILS ARE REMOVED, OR WHERE EXISTING SOILS ARE NOT CONDUCTIVE TO PLANT GROWTH.
ADDITIONAL PLANTING MEDIUM IS NOT REQUIRED WHERE EXISTING SOIL IS PRESENT IN OR ADJACENT TO THE R.O.W. THIS DOES NOT INCLUDE TOPSOIL REQUIRED FOR SODDING.
WHERE SUBSOIL BELOW THE INDICATED DEPTH OF PLANTING MEDIUM IS NOT CONDUCTIVE TO PLANT GROWTH, REPLACE WITH APPROVED SUBSOIL TO A FURTHER DEPTH OF 300mm.

BASE CONTRACT TO ASSUME SUBSOIL IS CONDUCTIVE TO PLANT GROWTH.

3 WHERE SOIL VOLUMES INCLUDE SOIL VOLUMES ON ADJACENT PROPERTY AT PROPERTY LINE
ADJACENT PROPERTY AND WITHIN SUBJECT PROPERTY:
ASSUME ALL SOIL VOLUME REQUIREMENTS ARE MET WITHIN THE ADJACENT PROPERTY AREA. REINSTATE ANY DISTURBED AREAS ON ADJACENT PROPERTY OUTSIDE THE 2m RADIUS TREE PITS WITH 100-150mm TOPSOIL AND SOD.
PLACE PLANTING MEDIUM (TO DEPTH INDICATED ON SOIL VOLUME CHART) AT ALL DISTURBED AREAS WHERE EXISTING SOILS ARE REMOVED, OR WHERE EXISTING SOILS ARE NOT CONDUCTIVE TO PLANT GROWTH.
ADDITIONAL PLANTING MEDIUM IS NOT REQUIRED WHERE EXISTING SOIL IS PRESENT IN OR ADJACENT TO THE ADJACENT PROPERTY. THIS DOES NOT INCLUDE TOPSOIL REQUIRED FOR SODDING.
WHERE SUBSOIL BELOW THE INDICATED DEPTH OF PLANTING MEDIUM IS NOT CONDUCTIVE TO PLANT GROWTH, REPLACE WITH APPROVED SUBSOIL TO A FURTHER DEPTH OF 300mm.

BASE CONTRACT TO ASSUME SUBSOIL IS CONDUCTIVE TO PLANT GROWTH.

4 AREAS NEAR SOCCER FIELD AND OUTDOOR CLASSROOM

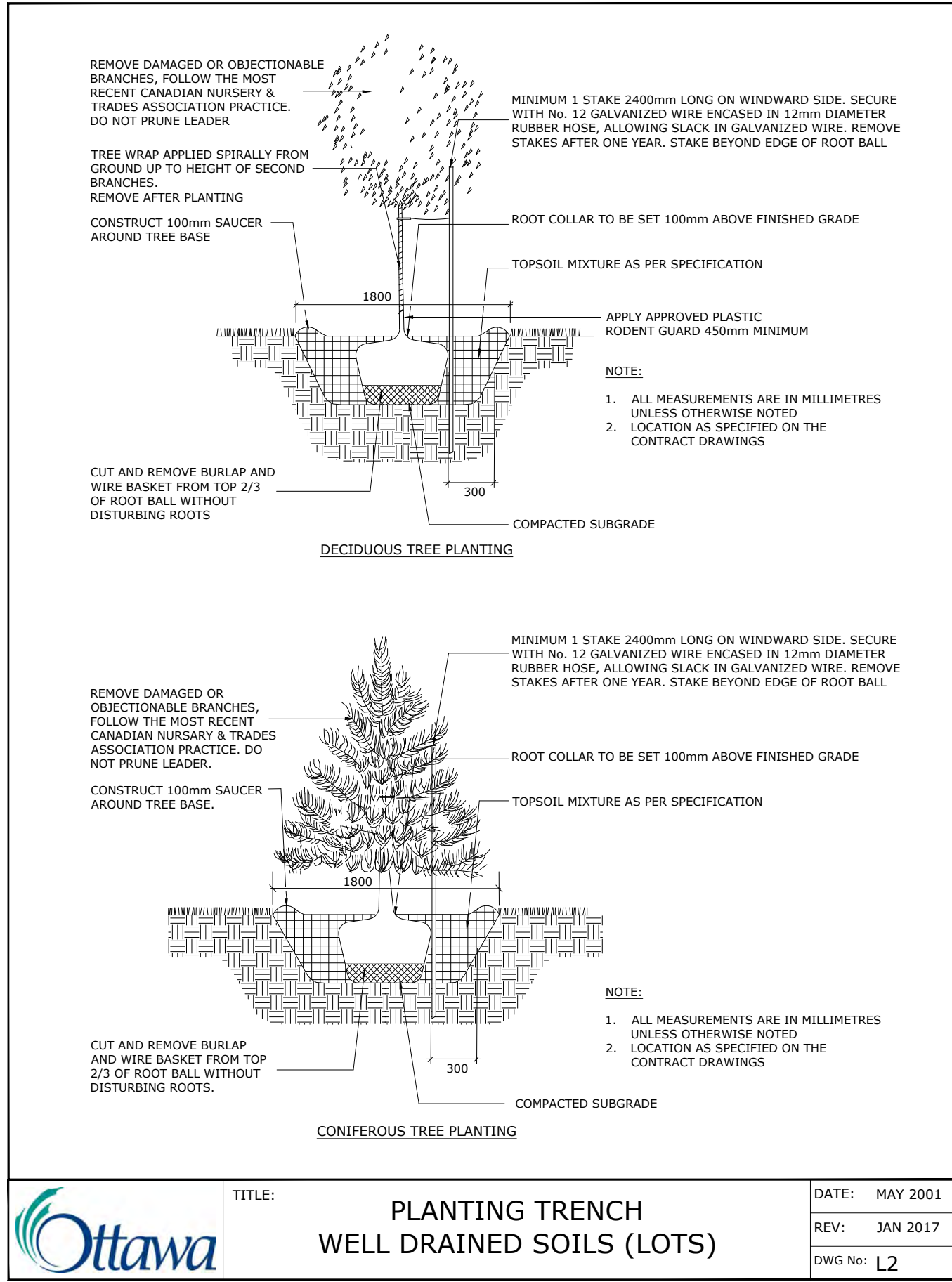
ASSUME ALL SOIL VOLUME REQUIREMENTS ARE MET, REINSTATE ANY DISTURBED AREAS ON ADJACENT PROPERTY OUTSIDE THE 2m RADIUS TREE PITS WITH 100-150mm TOPSOIL AND SOD.
ADDITIONAL PLANTING MEDIUM IS NOT REQUIRED WHERE EXISTING SOIL IS PRESENT IN OR ADJACENT TO THE ADJACENT PROPERTY. THIS DOES NOT INCLUDE TOPSOIL REQUIRED FOR SODDING.
WHERE SUBSOIL BELOW THE INDICATED DEPTH OF PLANTING MEDIUM IS NOT CONDUCTIVE TO PLANT GROWTH, REPLACE WITH APPROVED SUBSOIL TO A FURTHER DEPTH OF 300mm.

BASE CONTRACT TO ASSUME SUBSOIL IS CONDUCTIVE TO PLANT GROWTH.

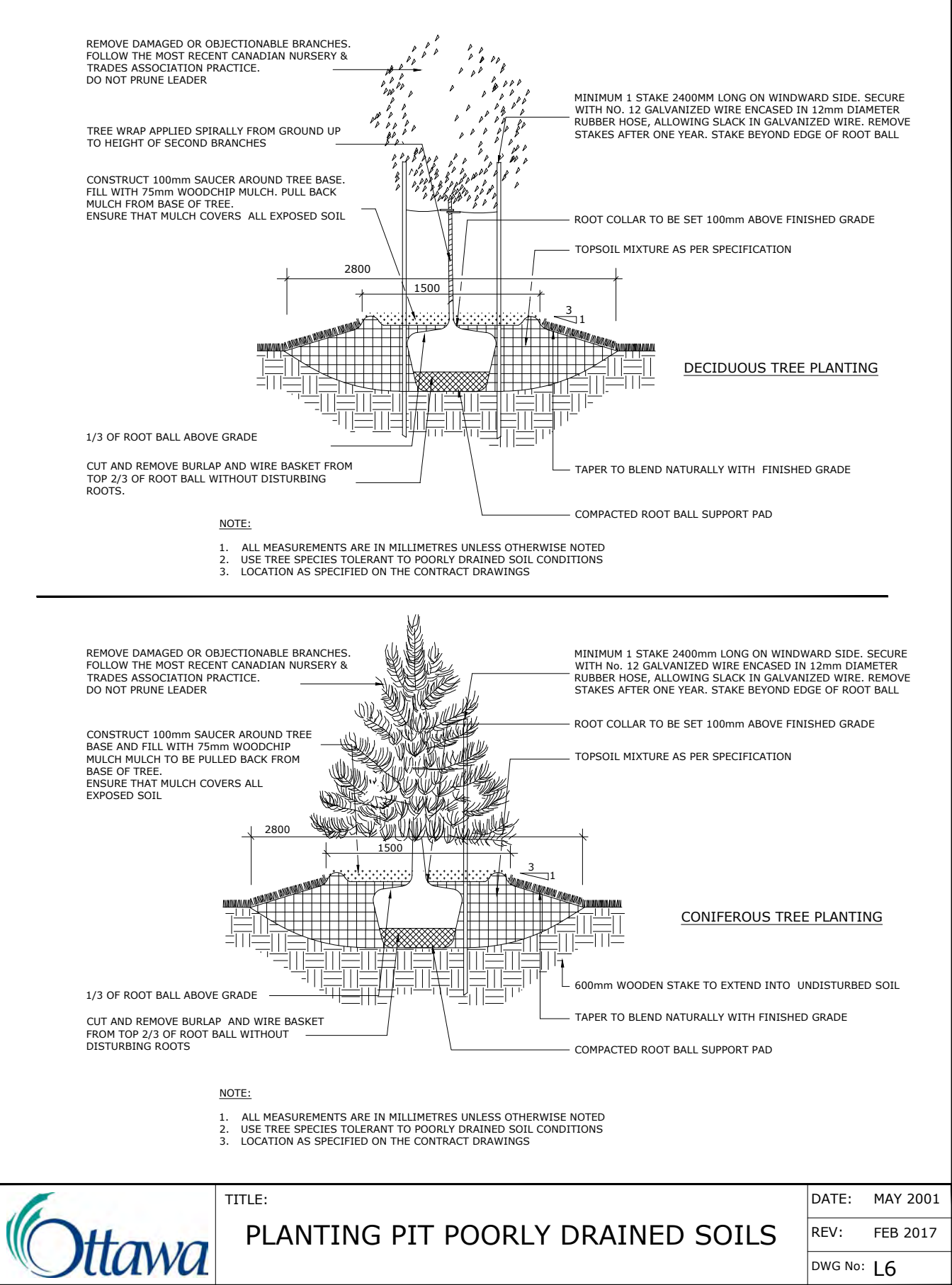
NOTES:
TREE SOIL VOLUME REQUIREMENTS:
STANDARD TREE SOIL VOLUMES QUANTITIES INCLUDE THE TOP 900-1000mm OF SOIL/EXISTING SUBSOIL LAYER TO CALCULATE TOTAL SOIL VOLUMES REQUIRED BY CITY OF OTTAWA FOR SUSTAINABLE TREE GROWTH. WHERE LARGER SOFT AREAS ARE AVAILABLE, THE TOP 400-500mm LAYER IS USED TO CALCULATE SOIL VOLUMES (AS PER CITY DETAL L1).

WHERE EXISTING MATERIAL BELOW THE SPECIFIED IMPORTED TOPSOIL IS NOT CONDUCTIVE TO TREE GROWTH, AN ADDITIONAL LAYER OF PLANTING MEDIUM IS TO BE INSTALLED BELOW SPECIFIED TOPSOIL DEPTH TO OBTAIN THE SOIL VOLUME DEPTH REQUIRED.

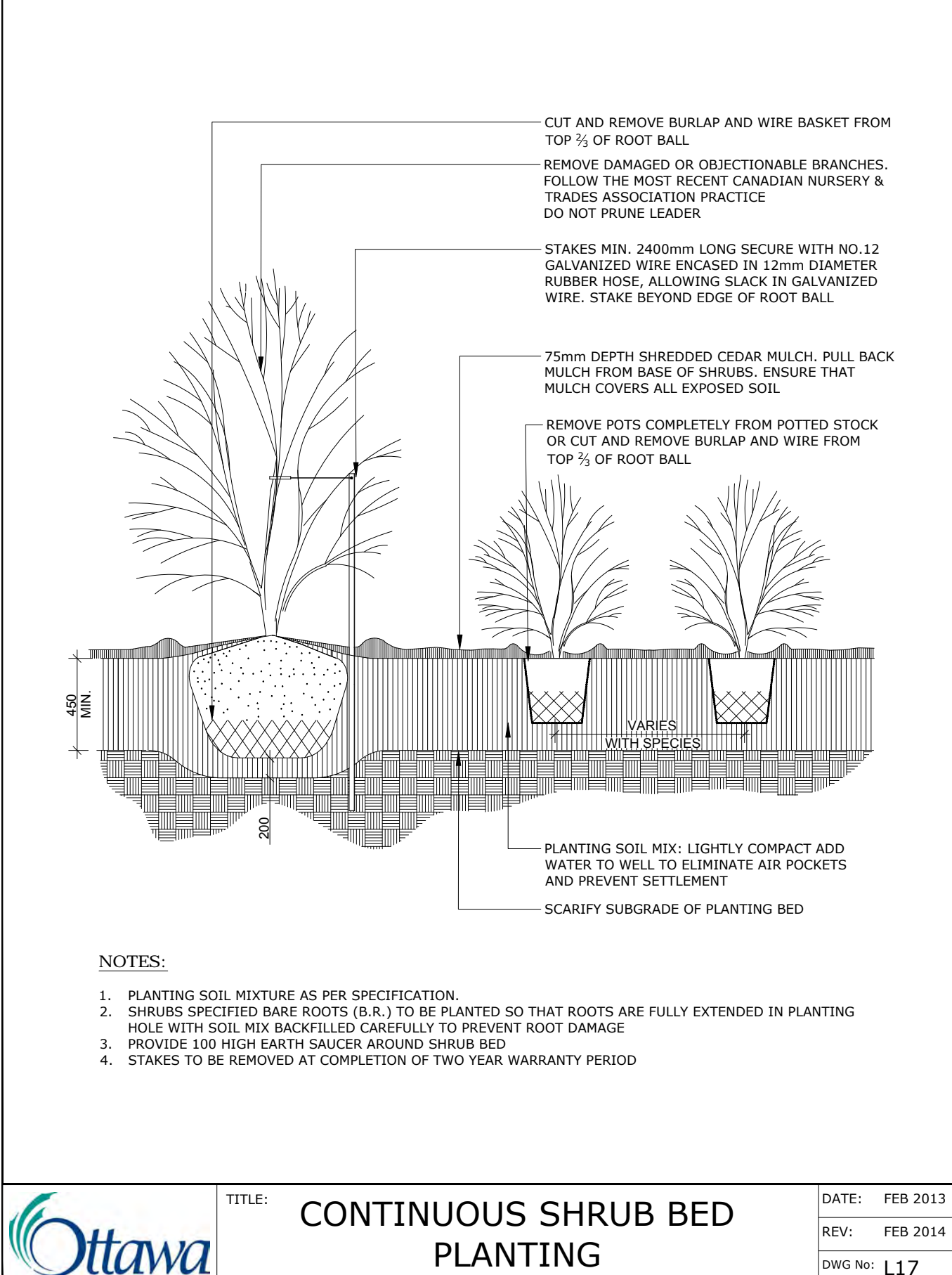
REFER TO SOIL VOLUME CHART AND PLANS ON L-02 FOR AREAS WHERE TREE SOIL VOLUMES ARE REQUIRED.



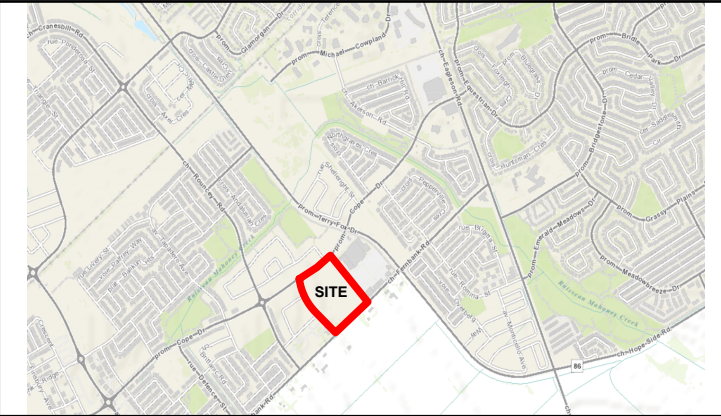
OTTAWA TITLE: PLANTING TRENCH WELL DRAINED SOILS (LOTS) DATE: MAY 2001 REV: JAN 2017 DWG No: L2



OTTAWA TITLE: PLANTING PIT POORLY DRAINED SOILS DATE: MAY 2001 REV: FEB 2017 DWG No: L6



OTTAWA TITLE: CONTINUOUS SHRUB BED PLANTING DATE: FEB 2013 REV: FEB 2014 DWG No: L17



ARCHITECT:
N45 ARCHITECTURE INC
71 BANK STREET, 7TH FLOOR
OTTAWA, ONTARIO, K1P 5N2
613.224.0095
VLADIMIRP@N45.CA

LANDSCAPE ARCHITECT:
RUHLAND & ASSOCIATES LTD.
200-1750 COURTWOOD CRESCENT
OTTAWA, ONTARIO, K2C 2B5
613.224.4744
MRUHLAND@RALA.CA

CIVIL ENGINEER:
JP2G CONSULTANTS INC.
1150 MORRISON DRIVE, SUITE 410
OTTAWA, ONTARIO, K2H 8S9
613.828.7800
ZACH.BAUMAN@JP2G.COM

MECHANICAL & ELECTRICAL ENGINEER:
GOODKEY, WEEDMARK & ASSOCIATES LTD.
1688 WOODWARD DRIVE
OTTAWA, ONTARIO, K2C 3R8
613.727.5111 x299
RAJV@GWAL.COM

LAND SURVEYOR:
ANNIS, O'SULLIVAN, VOLLEBEKK LTD
14 CONCOURSE GATE, SUITE 500
OTTAWA, ONTARIO, K2E 7S6
613.727.0850
NEPEAR@AOVLTD.COM

GEOTECHNICAL ENGINEER & ENVIRONMENTAL:
EXP SERVICES INC.
100-2650 QUEENSVIEW DRIVE
OTTAWA, ONTARIO K2B 8H6
613.688.1899 x63242
ISMAIL.TAKI@EXP.COM

TRAFFIC ENGINEER:
ROBINSON CONSULTANTS
210-350 PALLADIUM DRIVE
OTTAWA, ONTARIO, K2V 1A8
613.592.6060
AHOWELL@RCII.COM

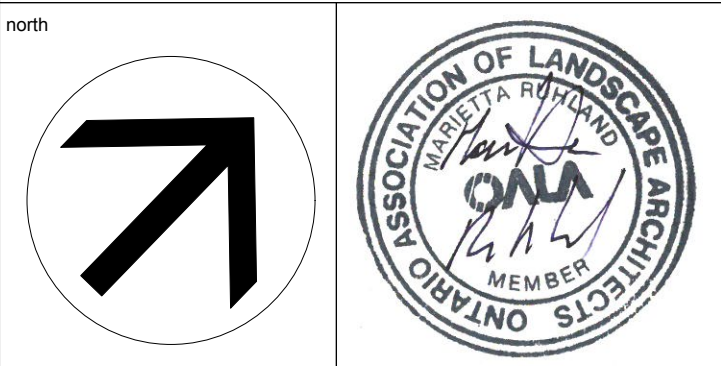
no.	revision	date
04		
03	Reissued for SPC Drawings	2025/11/27
02	Issued for 66% Drawings	2025/10/28
01	Issued for SPC submission	2025/10/28

N45 ARCHITECTURE INC.
71 Bank Street, 7th Floor - Ottawa, Ontario, K1P 5N2
tel. 613.224.0095 fax 613.224.9811

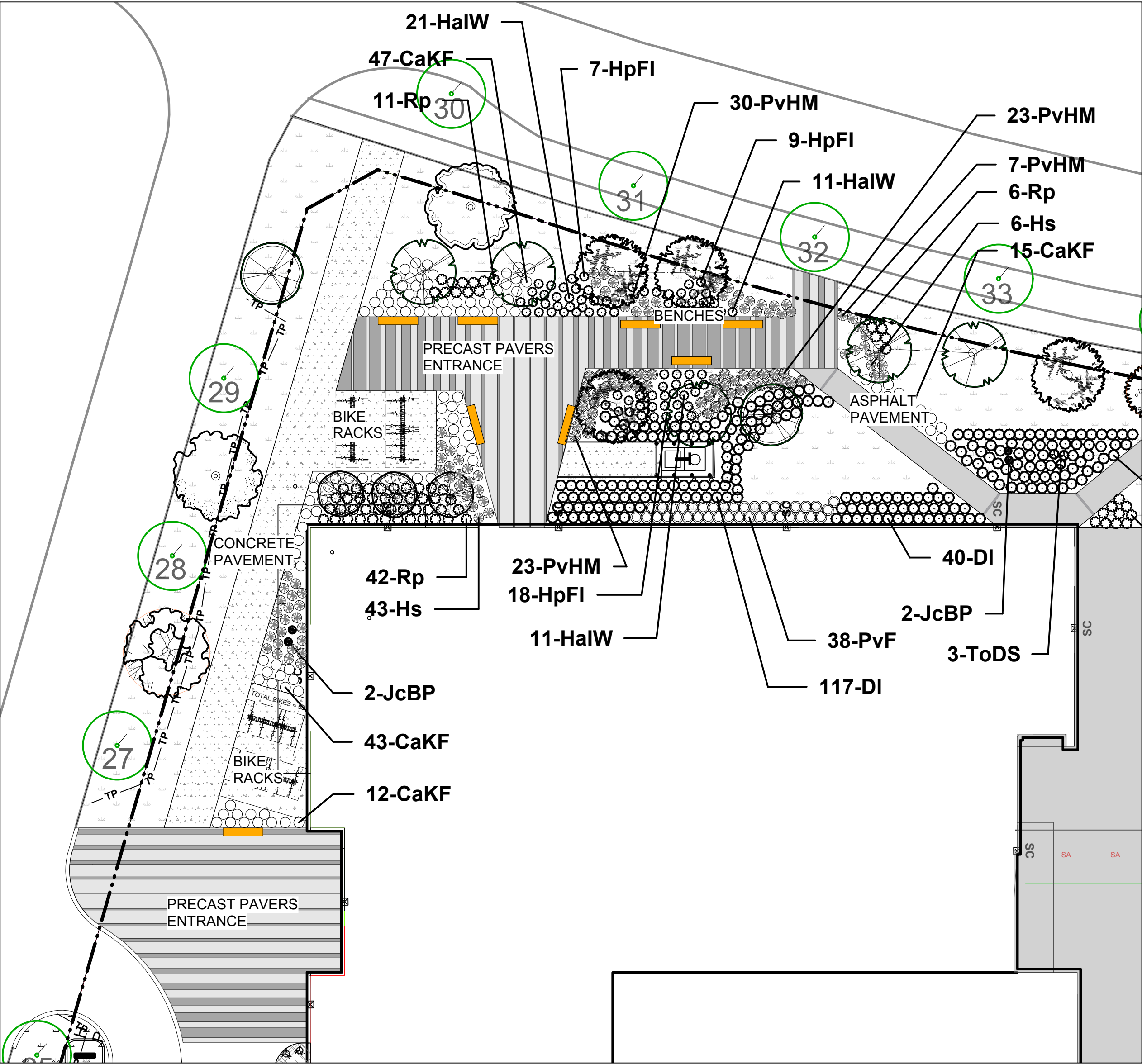
Ruhland & Associates Ltd
landscape architecture • urban design • site planning
Ph 613-224-0744 Fx 613-224-1131 info@rala.ca www.rala.ca

FERNBANK CATHOLIC HIGHSCHOOL

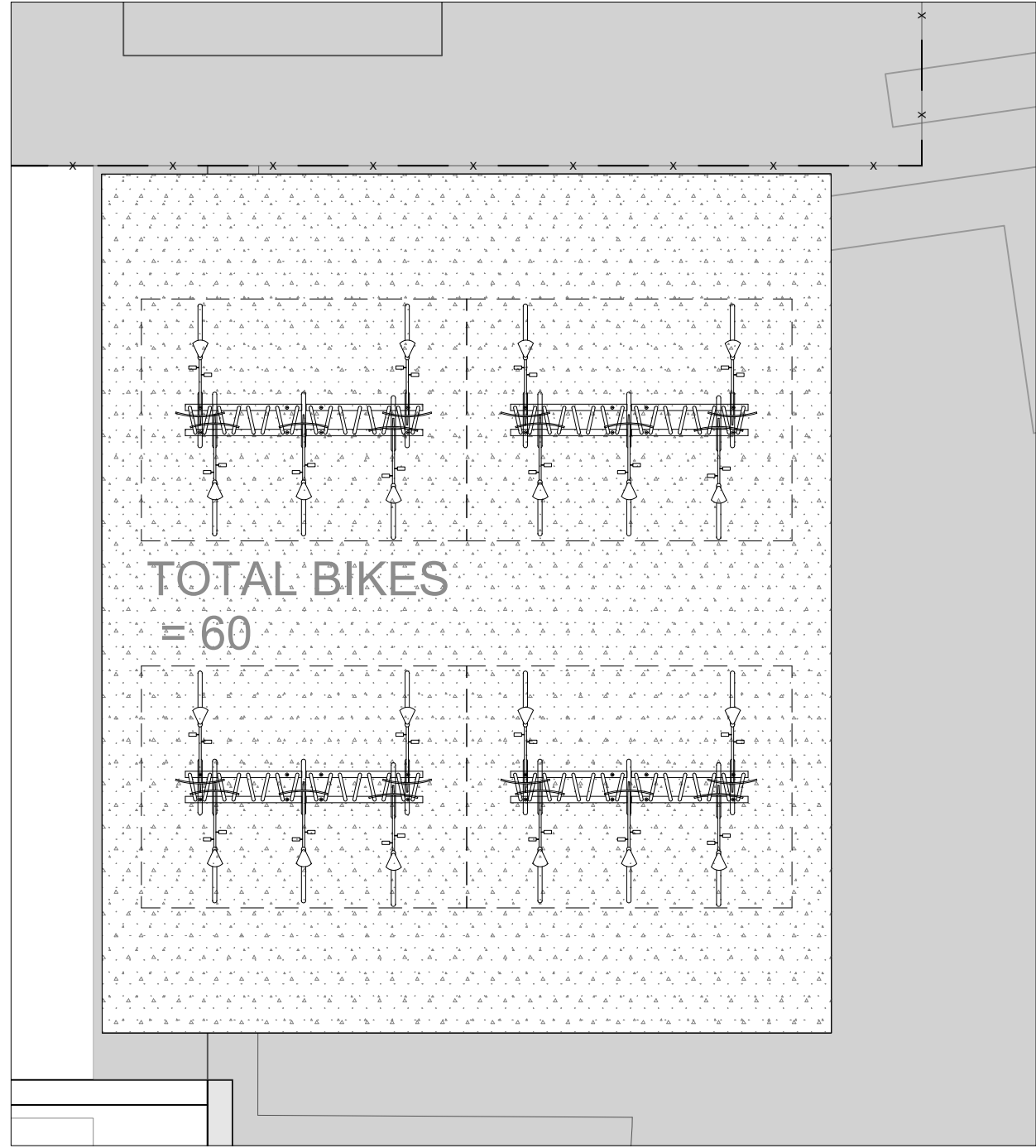
5431 FERNBANK ROAD
OTTAWA, ONTARIO
K2S 0T7



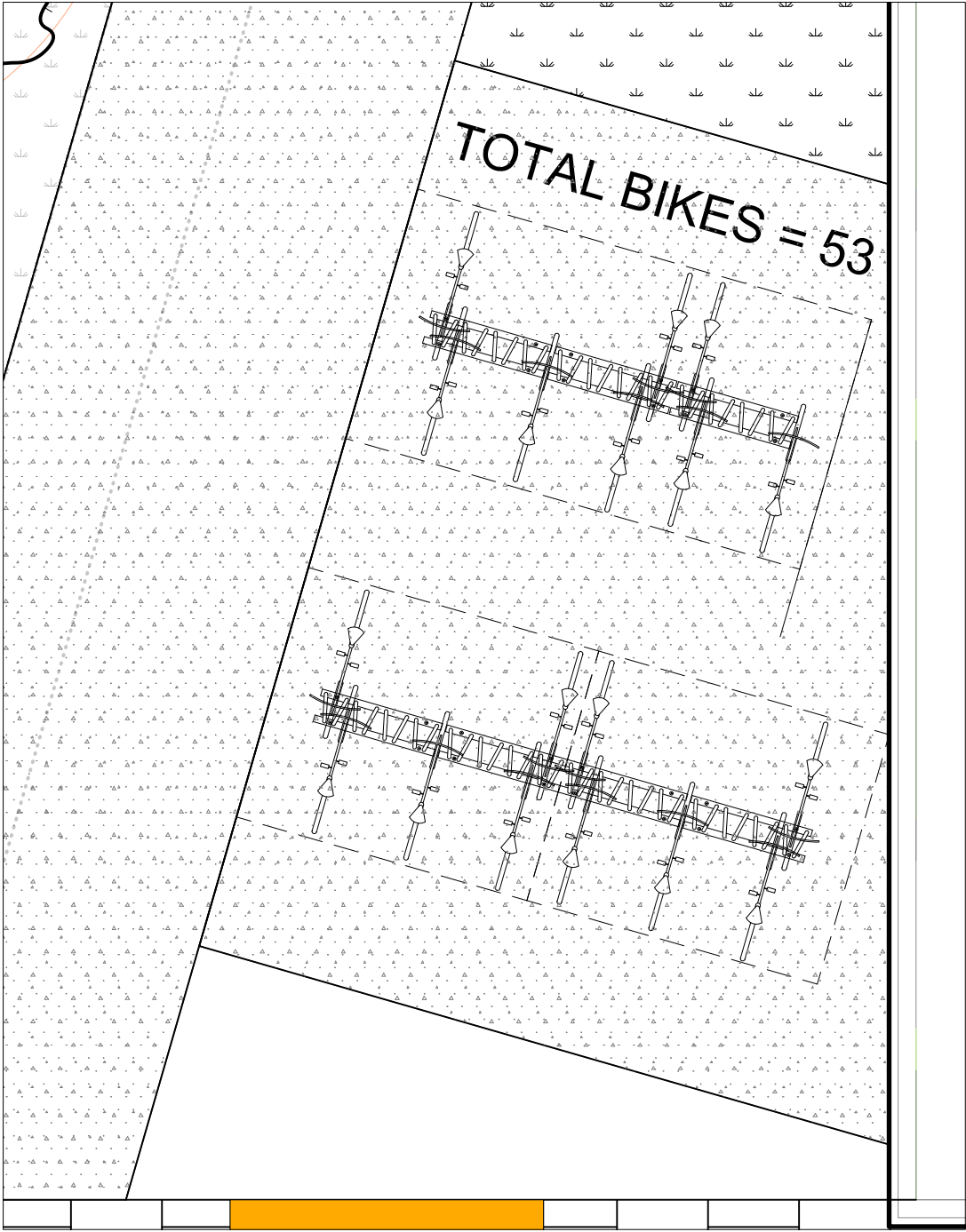
drawing title	CANOPY COVERAGE & SOIL VOLUMES	
scale	1:400	drawn by D.A.
date		checked by M.R.
project number	N45	drawing number
RA	24-1743	L - 02
CONTRACTOR TO VERIFY ALL DIMENSIONS AND NOTIFY THE ARCHITECT OF ANY DISCREPANCIES BEFORE WORK COMMENCES.		revision
DO NOT SCALE DRAWINGS		



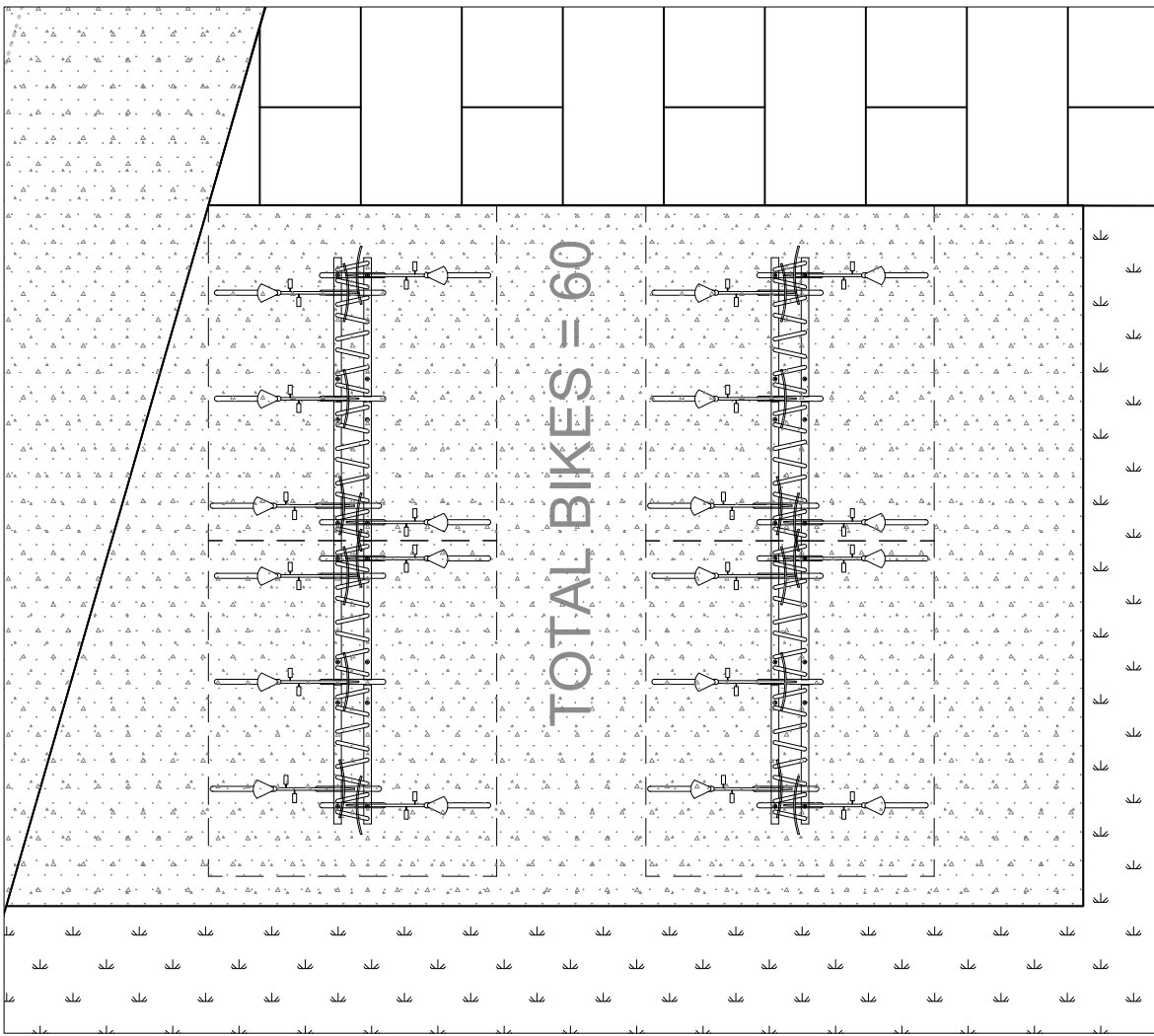
1 FRONT PLAZA PLAN
Scale: 1:300



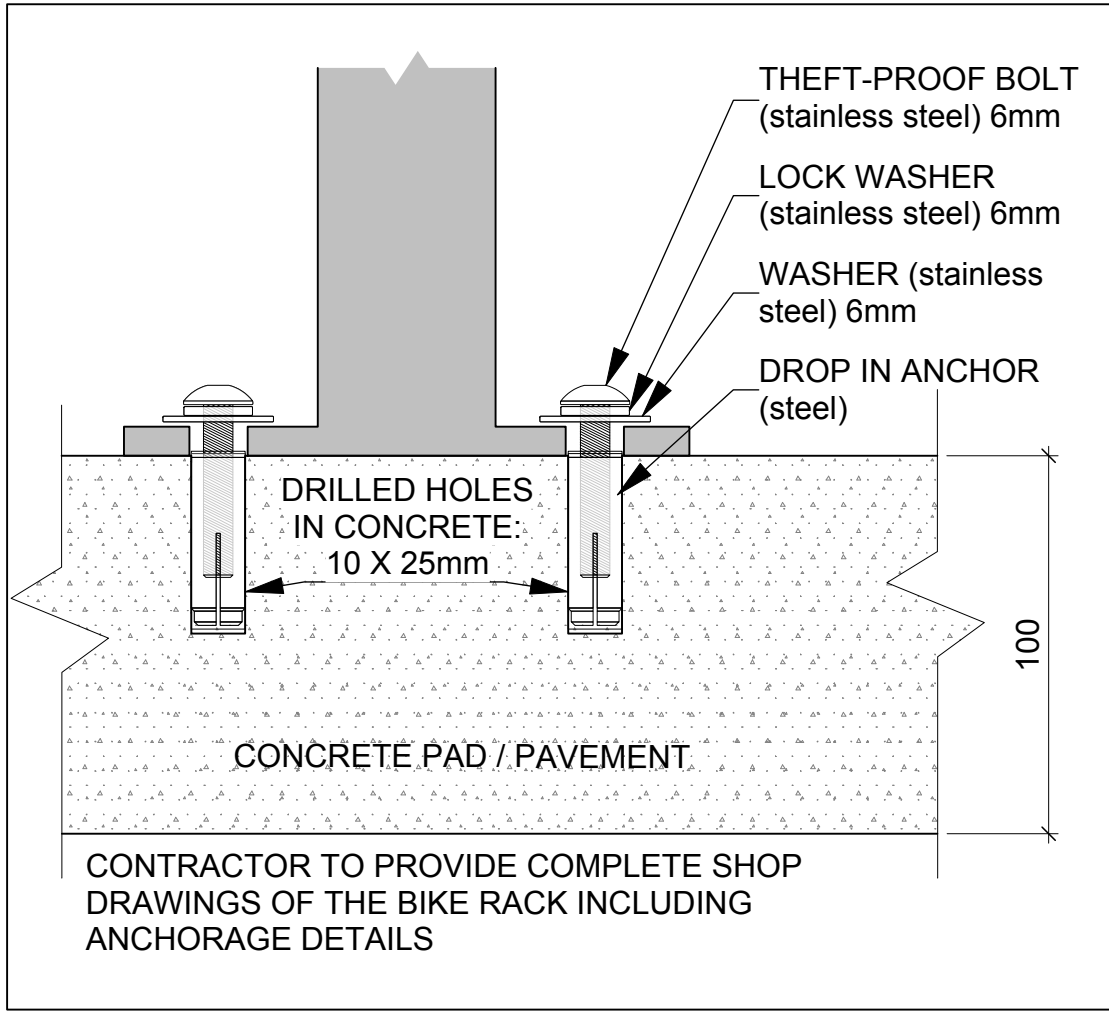
2 ENLARGEMENT - BIKE RACK 1
Scale: 1:75



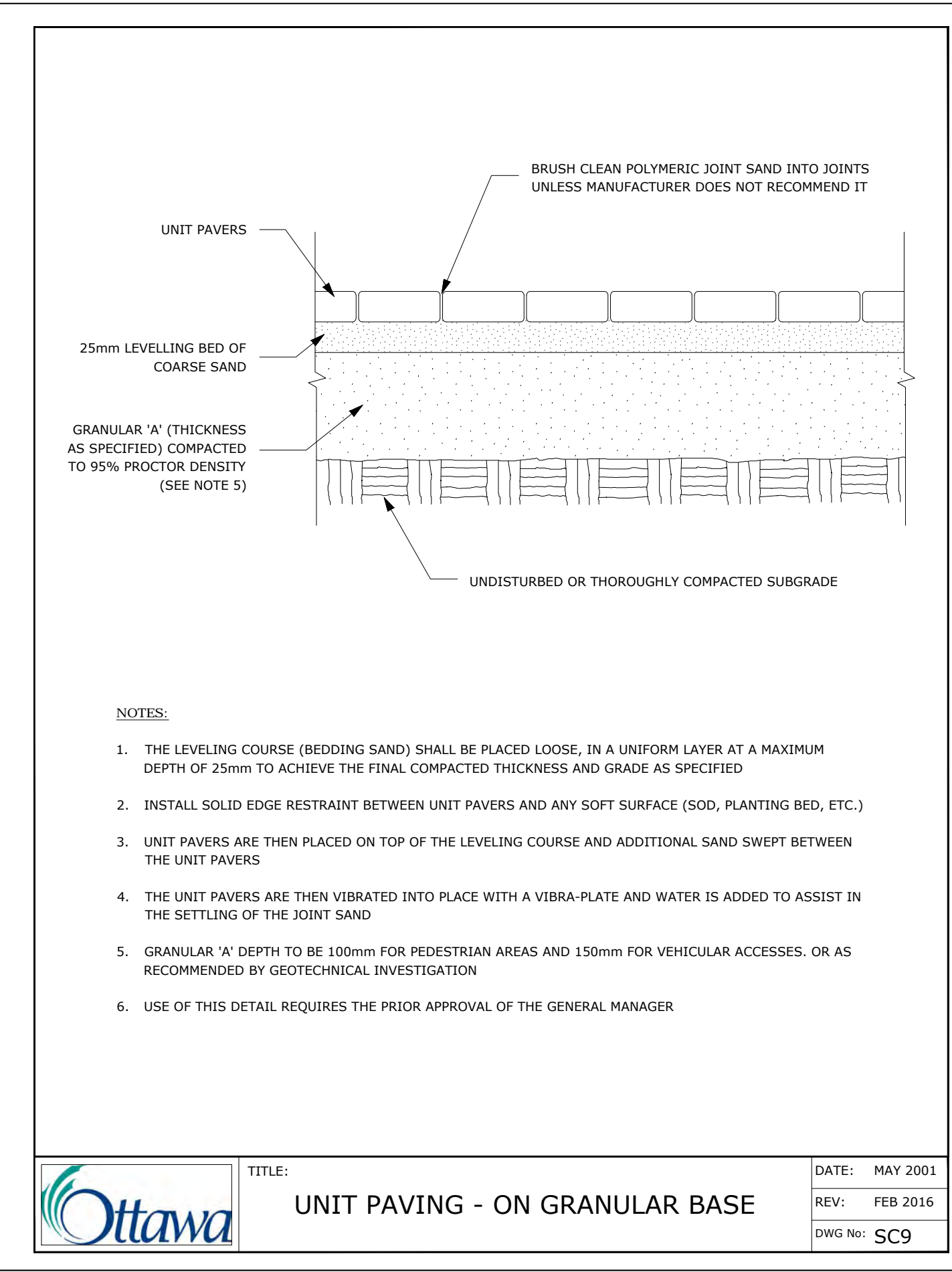
3 ENLARGEMENT - BIKE RACK 2
Scale: 1:75



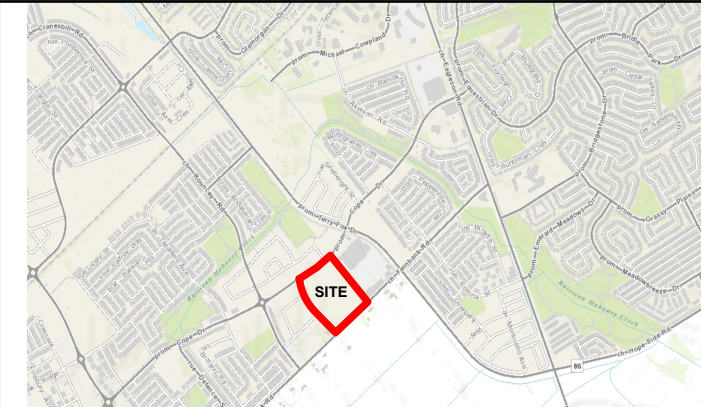
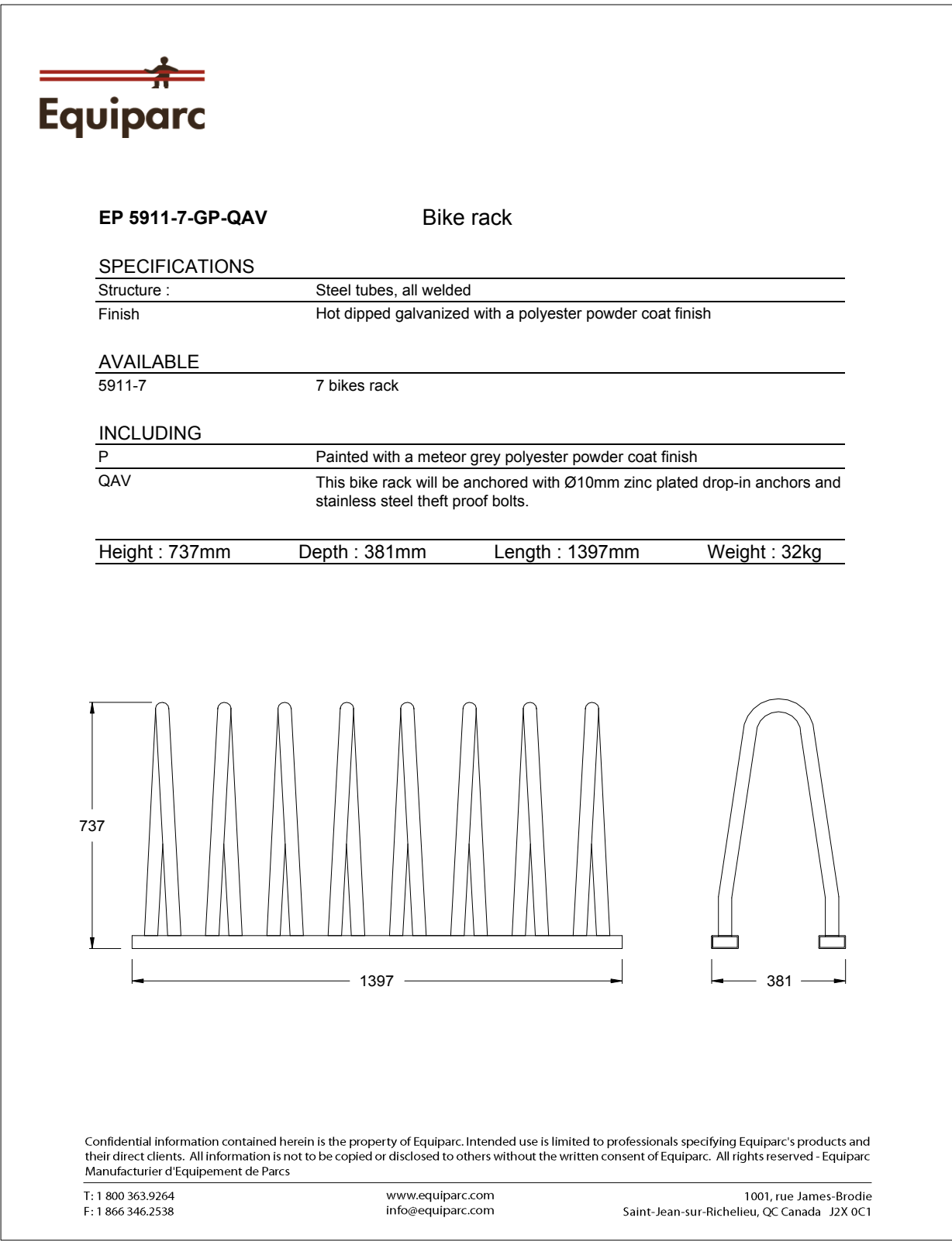
4 ENLARGEMENT - BIKE RACK 3
Scale: 1:75



5 BIKE RACK ANCHORING
Scale: NTS



ADDITIONAL NOTES :
PRECAST PAVERS IN VEHICULAR AREAS TO RECEIVE SAME BASE STRUCTURES FOR GRANULAR A' AND B' AS GEOTECHNICAL RECOMMENDATIONS FOR HEAVY DUTY PAVEMENT. PEDESTRIAN AREAS ARE TO RECEIVE 200mm COMPACTED GRANULAR A' MINIMUM, ADJUSTMENTS TO BE SPECIFIED IN RELATION TO SITE CONDITIONS AND GEOTECHNICAL RECOMMENDATIONS.



ARCHITECT:
N45 ARCHITECTURE INC
71 BANK STREET, 7TH FLOOR
OTTAWA, ONTARIO, K1P 5N2
613.224.0095
VLADIMIRP@N45.CA

LANDSCAPE ARCHITECT:
RUHLAND & ASSOCIATES LTD.
200-1750 COURTWOOD CRESCENT
OTTAWA, ONTARIO, K2C 2B5
613.224.4744
MRUHLAND@RALA.CA

CIVIL ENGINEER:
JP2G CONSULTANTS INC.
1150 MORRISON DRIVE, SUITE 410
OTTAWA, ONTARIO, K2H 8S9
613.828.7800
ZACH.BAUMAN@JP2G.COM

MECHANICAL & ELECTRICAL ENGINEER:
GOODKEY, WEEDMARK & ASSOCIATES LTD.
1688 WOODWARD DRIVE
OTTAWA, ONTARIO, K2C 3R8
613.727.5111 x299
RAJV@GVAL.COM

LAND SURVEYOR:
ANNIS, O'SULLIVAN, VOLLEBEKK LTD
14 CONCOURSE GATE, SUITE 500
OTTAWA, ONTARIO, K2E 7S6
613.727.0850
NEPEAN@AOVLTD.COM

GEOTECHNICAL ENGINEER & ENVIRONMENTAL:
EXP SERVICES INC.
100-2650 QUEENSVIEW DRIVE
OTTAWA, ONTARIO K2B 8H6
613.688.1899 x63242
ISMAIL.TAKI@EXP.COM

TRAFFIC ENGINEER:
ROBINSON CONSULTANTS
210-350 PALLADIUM DRIVE
OTTAWA, ONTARIO, K2V 1A8
613.592.6060
AHOWELL@RCII.COM

no.	revision	date
04		
03	Reissued for SPC Drawings	2025/11/27
02	Issued for 66% Drawings	2025/10/28
01	Issued for SPC submission	2025/10/28

N45 ARCHITECTURE INC.
71 Bank Street, 7th Floor - Ottawa, Ontario, K1P 5N2
tel. 613.224.0095 fax 613.224.9811

Ruhland & Associates Ltd
landscape architecture • urban design • site planning
Ph 613-224-0744 Fx 613-224-1131 info@rala.ca www.rala.ca

FERNBANK CATHOLIC HIGH SCHOOL
5431 FERNBANK ROAD
OTTAWA, ONTARIO
K2S 0T7

north

ASSOCIATION OF LANDSCAPE ARCHITECTS
HARVEY A. RUHLAND
OAA
MEMBER

drawing title

ENLARGEMENT & DETAILS	
scale	1:400
drawn by	D.A.
date	
checked by	M.R.
project number	N45
drawing number	24-1743
RA	24-1743
CONTRACTOR TO VERIFY ALL DIMENSIONS AND NOTIFY THE ARCHITECT OF ANY DISCREPANCIES BEFORE WORK COMMENCES.	
DO NOT SCALE DRAWINGS	

L - 03

CONTRACTOR TO VERIFY ALL DIMENSIONS AND NOTIFY THE ARCHITECT OF ANY DISCREPANCIES BEFORE WORK COMMENCES.

DO NOT SCALE DRAWINGS