

Scale 1 : 150

6 4.5 3.0 1.5 0 3 6 Metres

The intended plot size of the plan is 762 mm in width by 457 mm in height when plotted at a scale of 1:150.

Metric

DISTANCES AND COORDINATES SHOWN ON THIS PLAN ARE IN METRES AND CAN BE CONVERTED TO FEET BY DIVIDING BY 0.3048.

rue ST-PIERRE STREET (Formerly St. Peter Street)

Centreline of Road as Constructed  
( BY-LAW NO.2016-372, INST. 001853925 )

PIN 04425 - 0114

N 37° 00' 30" W (Reference Bearing)  
20.57 (P4)8Meas. (20.12 DI)

50.54 (P4)8Meas.

98.39 (P3)8Meas.

PART 8  
EXPROPRIATION  
PLAN CT200285

SCHEDULE				
AREA (Sq.m.)	PART	LOT	PLAN	PIN
116.6	1	PART OF LOTS 29 AND 30	86	PART OF 04425-0095

PLAN OF SURVEY OF

## PART OF LOTS 29 AND 30 REGISTERED PLAN 86 CITY OF OTTAWA

Surveyed by Annis, O'Sullivan, Vollebekk Ltd.

### Surveyor's Certificate

I CERTIFY THAT:

- This survey and plan are correct and in accordance with the Surveys Act, the Surveyors Act and the Land Titles Act and the regulations made under them.
- The survey was completed on the 7th day of March, 2025.

YYYY-MM-DD  
Date

T. Hartwick  
Ontario Land Surveyor

This plan of survey relates to AOLS Plan Submission Form Number V-97753

### Notes & Legend

- Denotes Survey Monument Planted
- " Survey Monument Found
- SIB " Standard Iron Bar
- IB " Iron Bar
- IB# " Round Iron Bar
- (WIT) " Witness
- Meas. " Measured
- (AOG) " Annis, O'Sullivan, Vollebekk Ltd.
- (P1) " Registered Plan 86
- (P2) " Plan 5R-951
- (P3) " Plan 5R-2318
- (P4) " (AOG) Plan Dated June 21, 2023
- (DI) " Instrument No. N620745

Distances shown on this plan are ground distances and can be converted to grid distances by multiplying by the combined scale factor of 0.999962.

Bearings are grid, derived from Can-Net 2016 Real Time Network GPS observations on reference points A and B, shown hereon, having a bearing of N21°11'20"W and are referenced to Specified Control Points 01919680184 and 019198434761, MTM Zone 9 (76°30' West Longitude) NAD-83 (original).

For bearing comparisons, a rotation of 0°00'50" counter-clockwise was applied to bearings on plan (P2) and (P3).

Coordinates are derived from Can-Net 2016 Real Time Network GPS observations referenced to Specified Control Points 01919680184 and 019198434761, MTM Zone 9 (76°30' West Longitude) NAD-83 (original).

Coordinate values are to urban accuracy in accordance with O. Reg. 216/10.

.01919680184	Northing	5040610.16	Easting	384736.56
.019198434761	Northing	5036178.12	Easting	372436.11
. Point A	Northing	5037589.94	Easting	381265.98
. Point B	Northing	5037720.66	Easting	381215.31

Caution: Coordinates cannot, in themselves, be used to re-establish corners or boundaries shown on this plan.

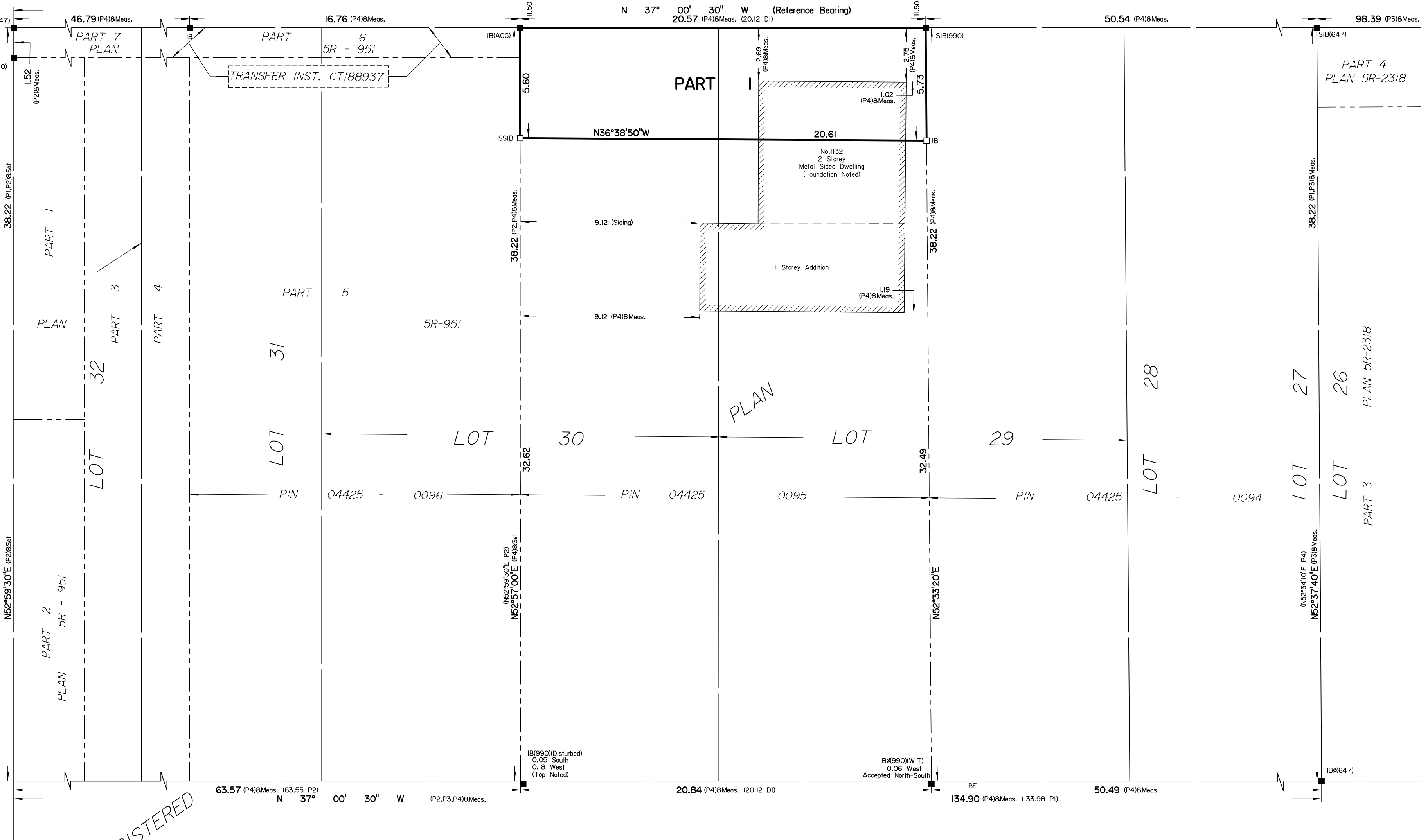
**ANNIS, O'SULLIVAN, VOLLEBEKK LTD.**  
14 Concourse Gate, Suite 500  
Nepean, Ont. K2E 7S6  
Phone: (613) 727-0850 / Fax: (613) 727-1079  
Email: Nepean@aovltd.com

Ontario  
Land Surveyors

Job No. 25568-25 Nemorin P112930 PL86 R F

ISW

ROCQUE STREET (Formerly Emma Street)



REGISTERED

BLOCK

PIN 04425 - 0156

C

LOT 21

PART 1  
PLAN 5R-3841

LOT 26  
PLAN 5R-2318

LOT 27

LOT 28

LOT 29

LOT 30

LOT 31

LOT 32

LOT 33

LOT 34

LOT 35

LOT 36