

KEY PLAN: NTS

40 YEAR CANOPY CALCULATION:

-5,729 m2 site area

-3 large trees proposed (154m2 ea.), 1 large coniferous tree proposed (79m2 ea.), 28 small trees proposed (7m2 ea)

=737m2 canopy cover =12.9% canopy cover

*Large deciduous tree calculated at 14m, large coniferous tree calculated at 10m, small tree calculated at 3m.

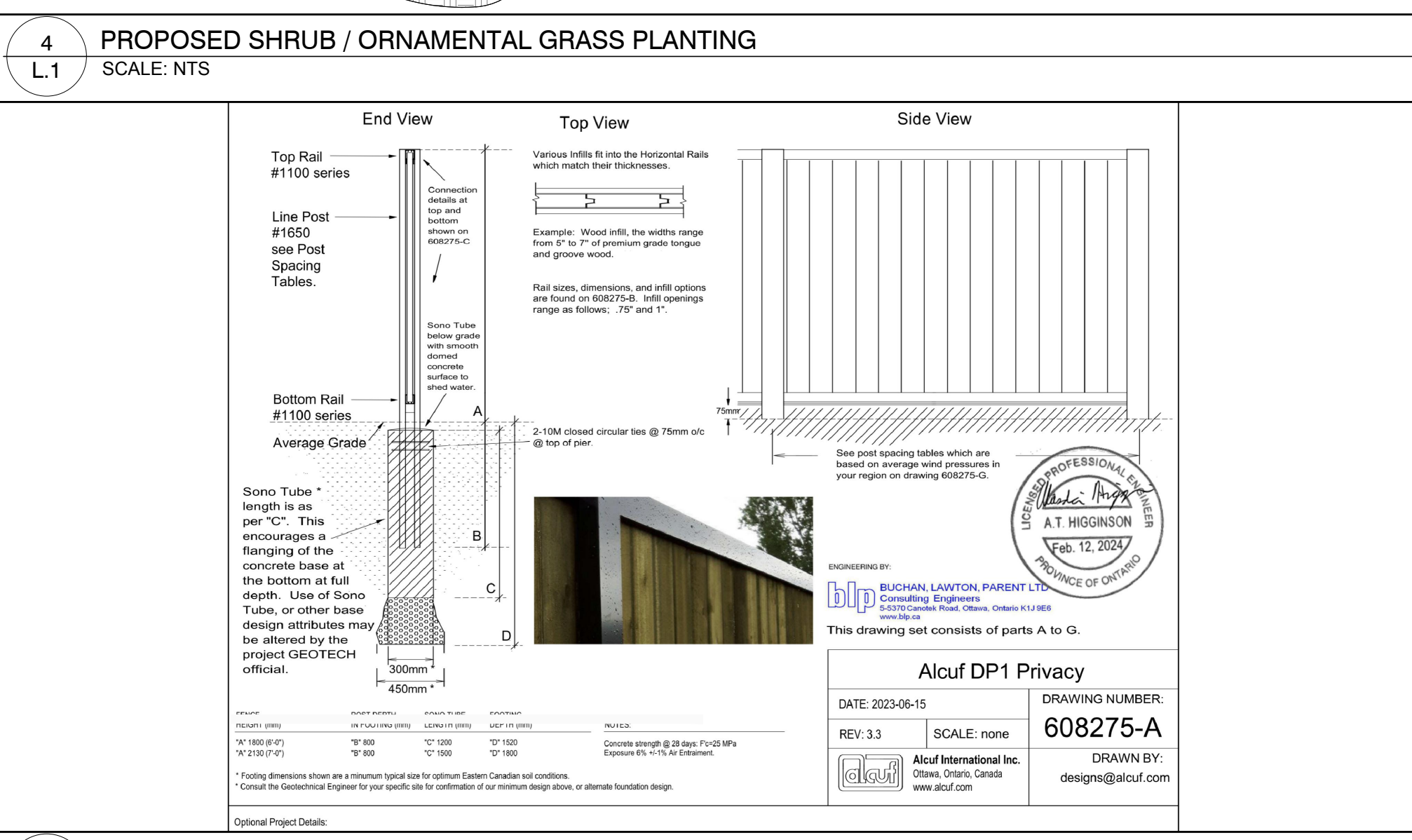
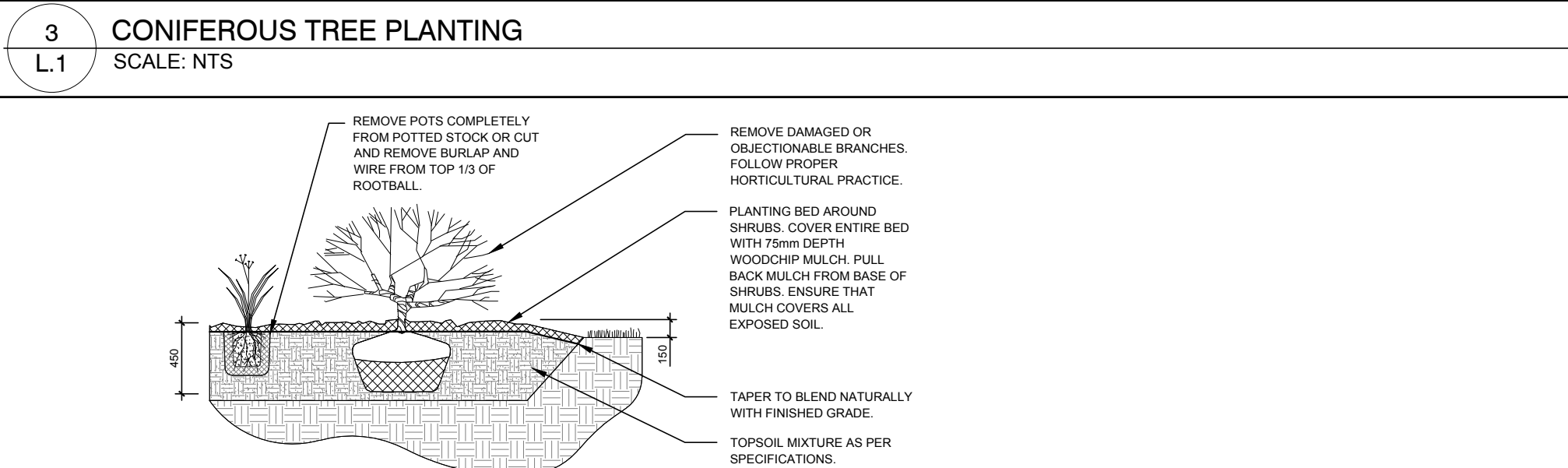
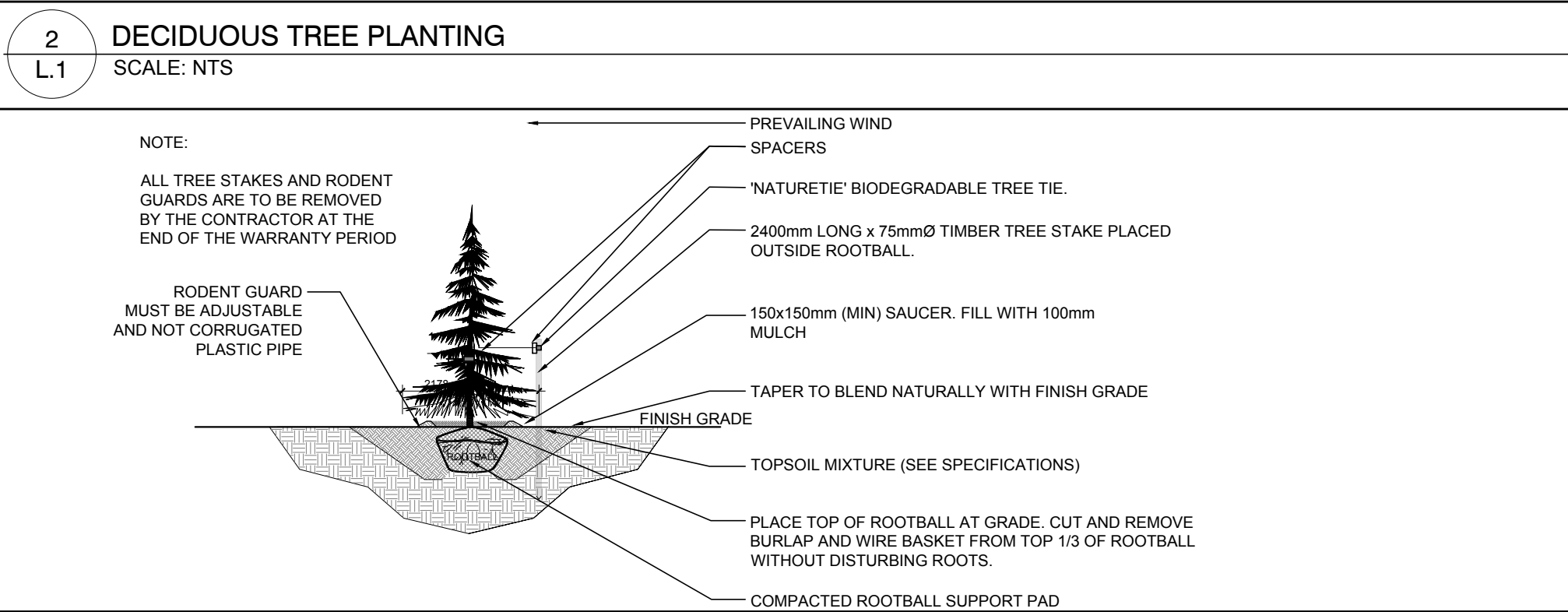
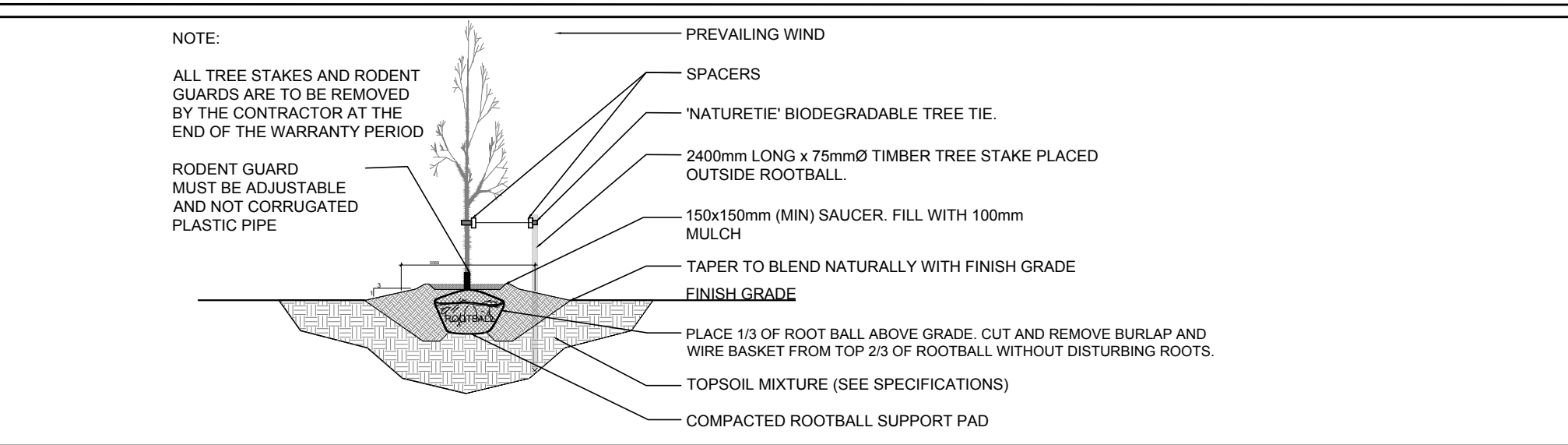
Tree planting opportunities are limited on site due to the presence of overhead wires on Brian Coburn Boulevard and an easement at the rear and side yard.

GENERAL NOTES:

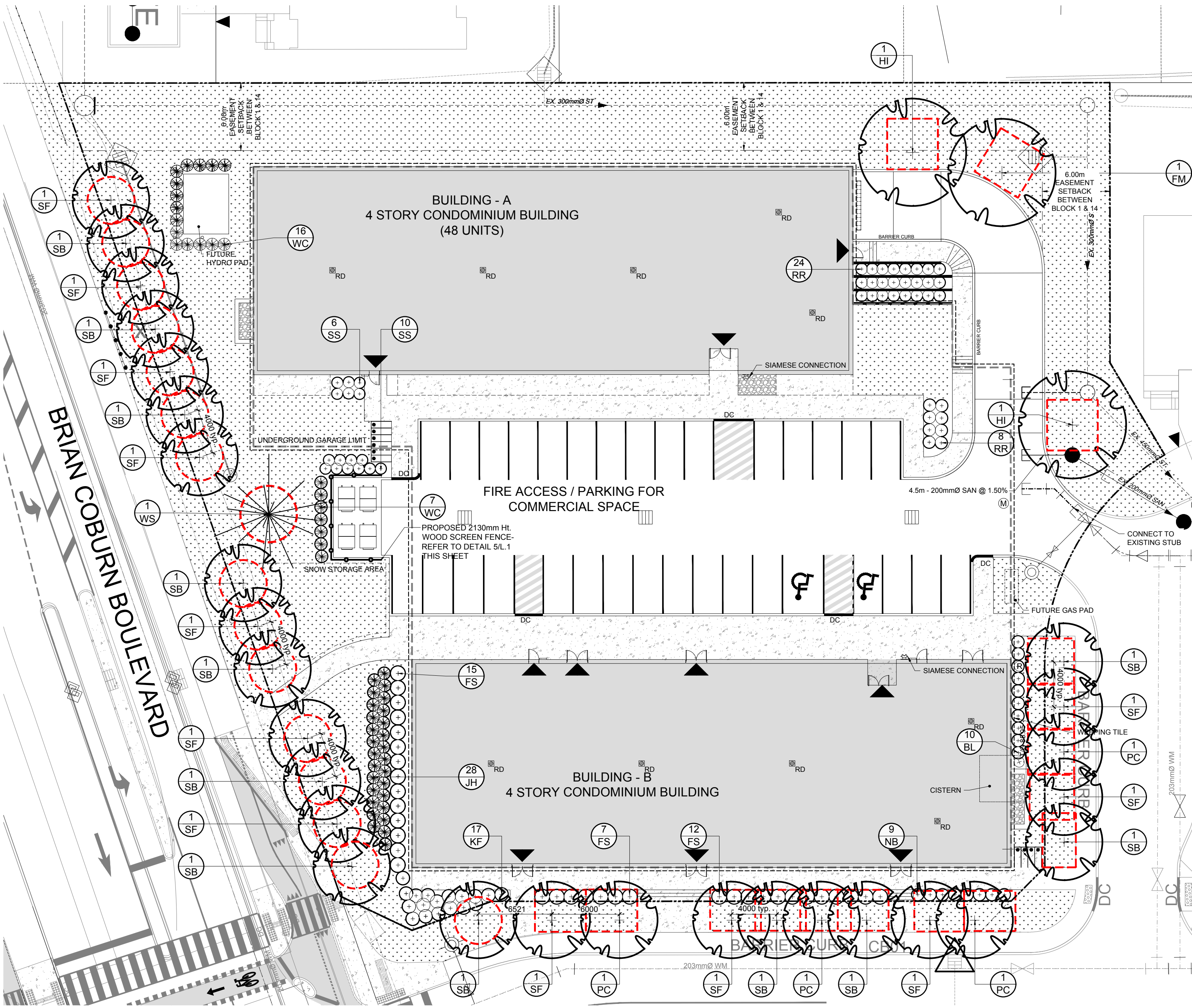
1. It is the responsibility of the appropriate contractor or official to report any errors, omissions or discrepancies on this plan with actual site conditions to the Landscape Architect before proceeding with construction.
2. The contractor is to notify all utility companies and authorities prior to any excavation and ascertain locations of underground services.
3. The contractor is to reinstate all areas and items damaged as a result of construction activity.
4. The contractor is to comply with all pertinent codes and by-laws.
5. The contractor is to maintain a positive surface run-off throughout the entire construction period.
6. The Landscape Architect is not responsible for subsurface conditions.
7. The contractor is to identify all existing trees to remain on site with the Landscape Architect prior to construction.
8. The contractor is to stake the proposed location of all plant material in conjunction with the Landscape Architect prior to excavation.
9. Minimum distances for selected deciduous trees are as follows:
 - Sidewalks 1.5m
 - Public Streets 2.5m
 - Underground Infrastructure 1.5m
10. All trees within 1m of underground utility trenches are to be excavated by hand.
11. Remove all protective wrapping from tree trunks after installation.
12. Staking of trees shall only be performed if necessary.
13. Ensure that mulch is pulled back a min. distance of 75mm from base of tree trunk.
14. The L.1 drawing has been prepared in conjunction with the Geotechnical Report addendum prepared by EXP services Inc. June 25th, 2025

PROPOSED PLANT LIST

KEY	QTY	BOTANICAL NAME	COMMON NAME	SIZE	CONDITION	REMARKS
TREES						
* FM	1	Acer x freemanii	Freeman's Maple	50mm cal.	B&B	
* HI	2	Carya cordiformis	Bitternut Hickory	50mm cal.	B&B	
* PC	4	Prunus pennsylvanica	Pin Cherry	50mm cal.	B&B	
* SB	12	Amelanchier canadensis	Shadblow Serviceberry	50mm cal.	B&B	
* SF	12	Amelanchier laevis	Allegheny Serviceberry	50mm cal.	B&B	
* WS	1	Picea glauca	White Spruce	2.0m ht.	B&B	
SHRUBS						
* FS	34	Rhus aromatica	Fragrant Sumac	600 mm ht.	Potted	1000 mm o.c.
* JH	28	Juniperus horizontalis 'Bar Harbor'	Bar Harbor Juniper	600 mm spr.	Potted	1000 mm o.c.
* NB	9	Physocarpus opulifolius	Ninebark	600 mm ht.	Potted	1000 mm o.c.
* RR	32	Rosa rugosa	Rugosa Rose	600 mm ht.	Potted	1000 mm o.c.
* SS	16	Rubus odoratus	Flowering Raspberry	600 mm ht.	Potted	1000 mm o.c.
* WC	23	Thuja occidentalis	White Cedar	2000 mm ht.	Potted	1000 mm o.c.
ORNAMENTAL GRASSES						
BL	10	Leymus arenarius 'Blue Dune'	Blue Dune Grass	250mm pot	Potted	800 mm o.c.
KF	17	Calamagrostis 'Karl Foerster'	Karl Foerster Grass	250mm pot	Potted	800 mm o.c.
* NATIVE TO ONTARIO						



5 PROPOSED SHRUB / ORNAMENTAL GRASS PLANTING SCALE: NTS



1 LANDSCAPE PLAN SCALE: 1:250

CLIENT:

Heafey
GROUP
768 BOUL. SAINT-JOSEPH, SUITE 100
GATINEAU, QC J8Y 4B8

ARCHITECTURAL

PMA
ARCHITECTES
14181 651-8554
INFO@PMAARCHITECTES.COM
3070, CHEMIN DES QUATRE-BOURGEOIS
QUÉBEC (QC) G1W 2K4
PMAARCHITECTES.COM

LAPALME RHEAULT
ARCHITECTES + ASSOCIÉS
53 BOUL. SAINT-JOSEPH,
GATINEAU, QC J8Y 1R8

ENGINEERS / PLANNER

J.L. Richards
ENGINEERS - ARCHITECTS - PLANNERS
1565 CARLING AVENUE, SUITE 700,
OTTAWA, ON K1Z 8R1

SURVEYOR

Stantec
1331 CLYDE AVENUE, SUITE 400,
OTTAWA, ON K2C 3G4

LEGEND

	40 YEAR CANOPY PROJECTION
	PROPOSED DECIDUOUS TREE
	REQUIRED SOIL VOLUME (25m3)
	40 YEAR CANOPY PROJECTION
	PROPOSED CONIFEROUS TREE
	REQUIRED SOIL VOLUME (30m3)
	PROPOSED SHRUBS / ORNAMENTAL GRASSES
	PROPOSED SOD
	PROPOSED RIVERSTONE

8	REVISED PER CITY COMMENTS	11/17/2025	ML	JL
7	REVISED PER CITY COMMENTS	07/09/2025	ML	JL
6	REVISED PER CITY COMMENTS	02/14/2025	ML	JL
5	REVISED PER CITY COMMENTS	03/04/2024	ML	JL
4	NOTE REVISED RE: TREE PLANTING	03/04/2024	ML	JL
3	REVISED PER CITY COMMENTS	03/01/2024	ML	JL
2	REVISED PER CITY COMMENTS	02/26/2024	ML	JL
1	ISSUED FOR SITE PLAN CONTROL	12/15/2023	ML	JL
No.	Issue	Date	DR	CK

JAMES B. LENNOX & ASSOCIATES INC.
LANDSCAPE ARCHITECTS
3332 CARLING AVE. OTTAWA, ONTARIO K2H 5A8
Tel. (613) 722-5168 Fax. (866) 343-3942

PROJECT
NAVAN ROAD DEVELOPMENT- BUILDINGS "A" AND "B"
NAVAN ROAD, ORLEANS ON

DRAWING
LANDSCAPE PLAN

STAMP

PROJECT NORTH

SCALE
AS SHOWN

START DATE
NOVEMBER 2023

PROJECT NO.
24MIS2406

DRAWING NO.
L.1

PLOT SIZE ARCH-D