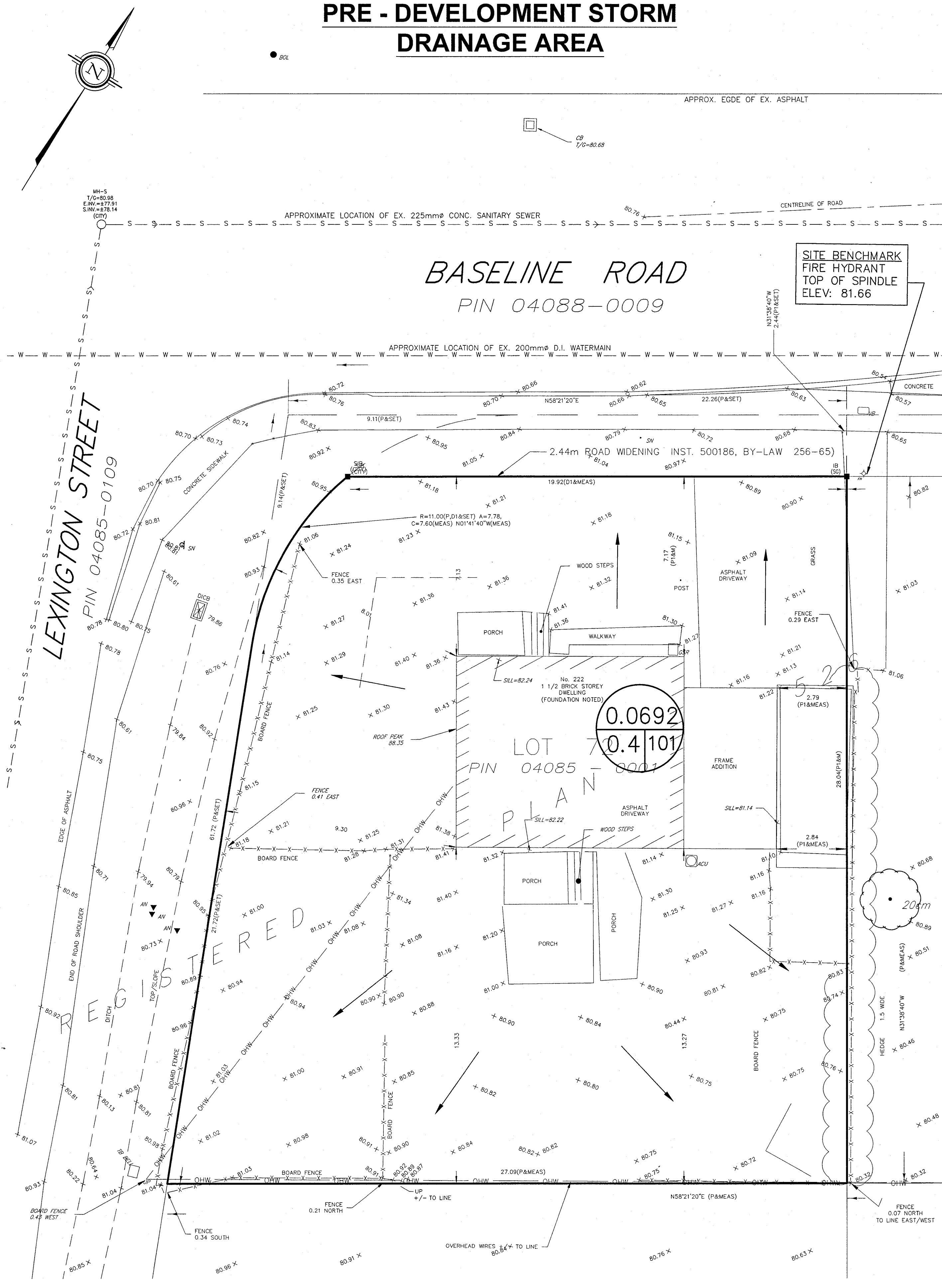
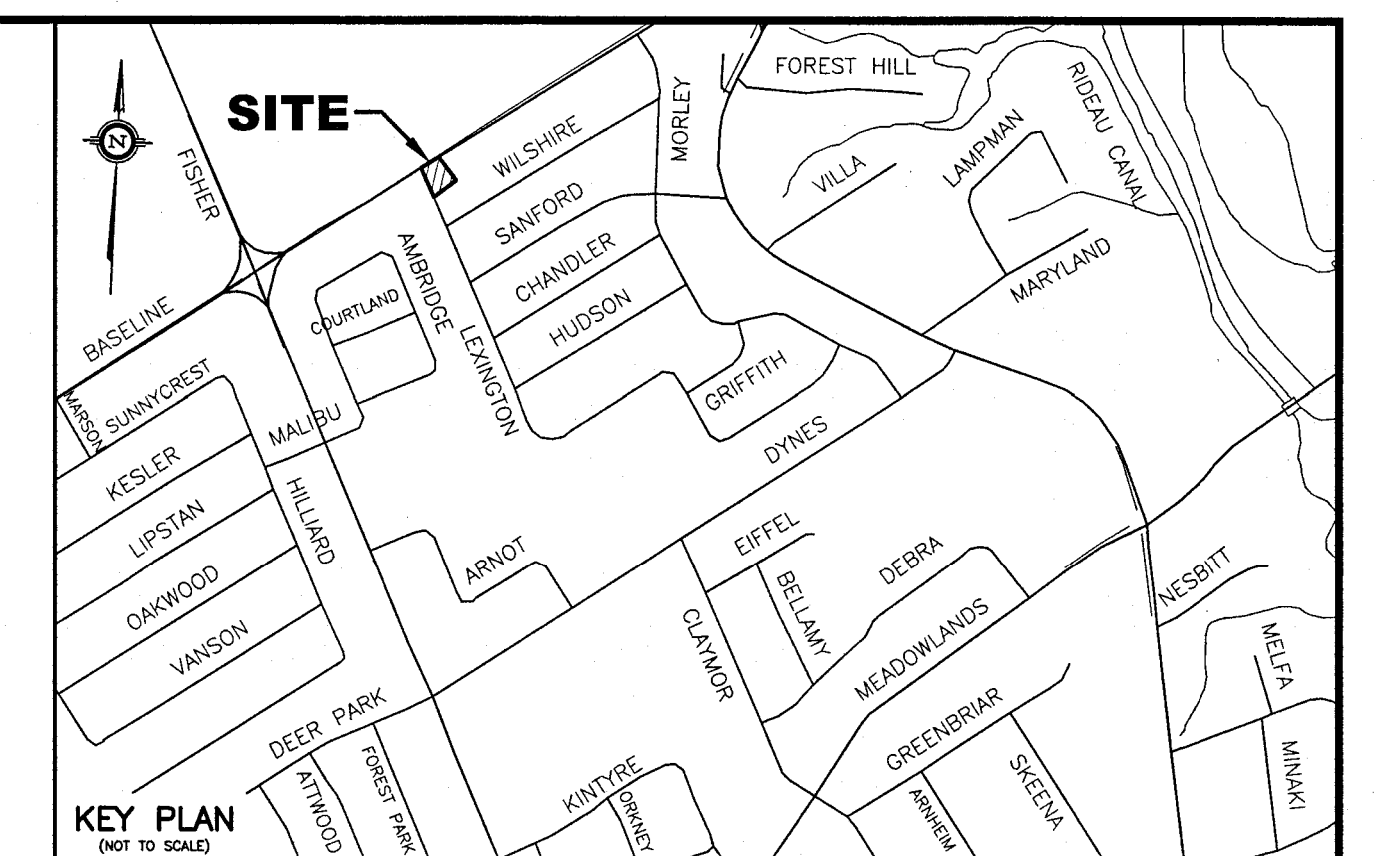
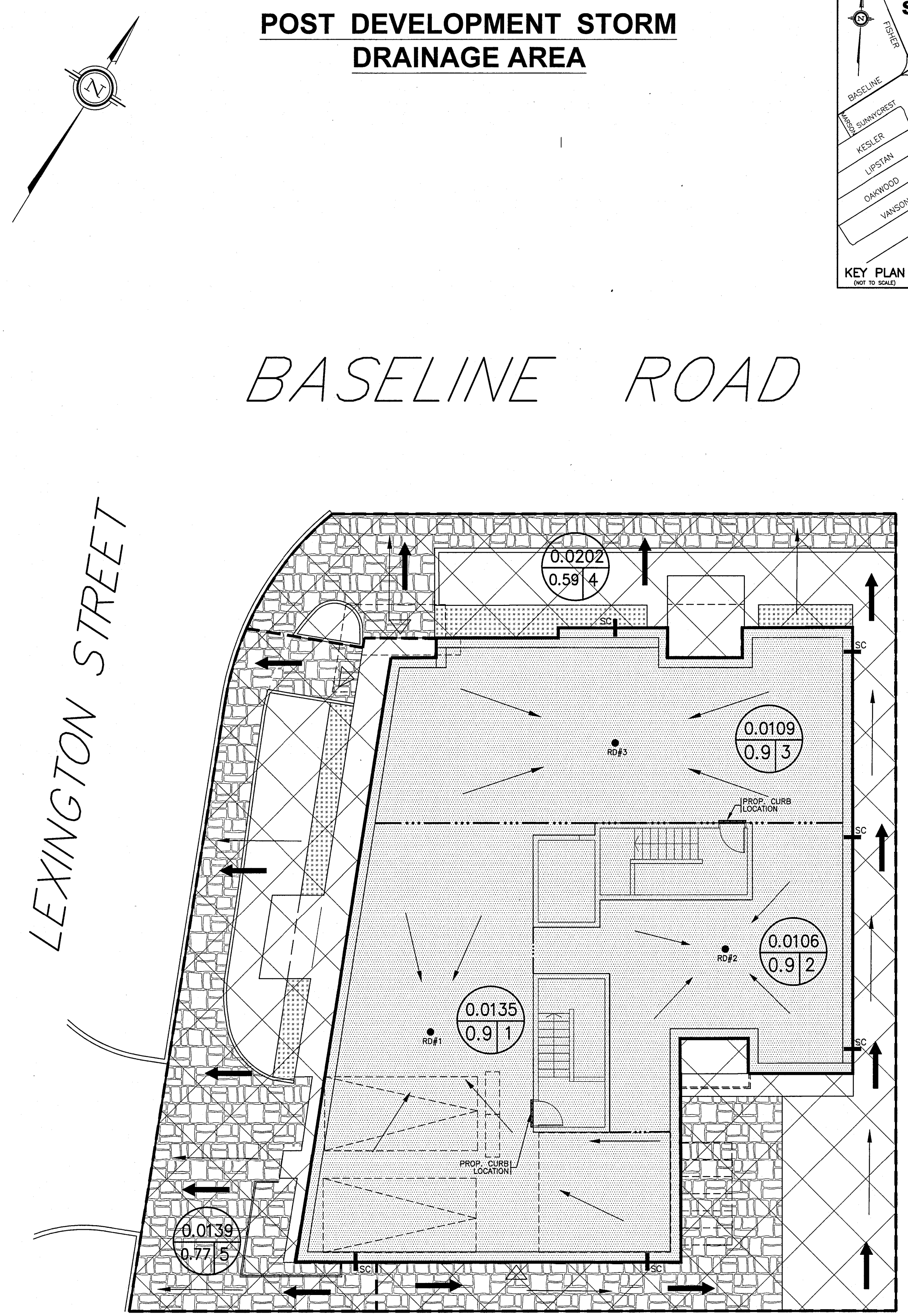


# PRE - DEVELOPMENT STORM DRAINAGE AREA



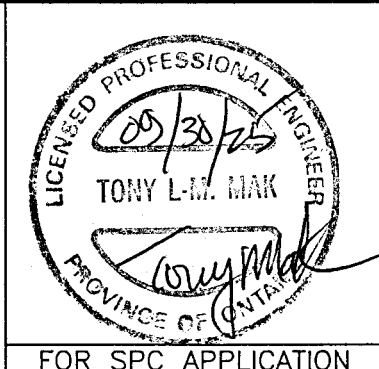
# POST DEVELOPMENT STORM DRAINAGE AREA



- LEGEND**
- RD#1 PROPOSED ROOF DRAIN NUMBER AND LOCATION
  - SC PROPOSED ROOF SCUPPER LOCATION
  - PROPOSED HIGH RIDGE LINE
  - (0.03 / 0.9 1) DRAINAGE AREA IN HECTARES / DRAINAGE NODE NUMBER
  - COEFFICIENT OF RUNOFF
  - ▨ UN-CONTROLLED DRAINAGE AREA
  - ▩ CONTROLLED DRAINAGE AREA
  - DENOTES PROPOSED OVERLAND FLOW ROUTE

- NOTES**
- NODE #1, NODE #2 AND NODE #3 REPRESENTS BUILDING ROOF AREA (SWM CONTROLLED AREA)
  - NODE #4 REPRESENTS UNCONTROLLED DRAINAGE AREA
  - NODE #101 REPRESENTS PRE-DEVELOPMENT DATA.

No.	REVISION	DATE	BY
2	REVISIONS AS PER PLANNERS REVIEW COMMENTS OF SEPTEMBER 29, 2025	09/30/25	TLM
1	REVISIONS AS PER ARCHITECT'S LATEST REVISED SITE PLAN RECEIVED ON JULY 14, 2025 AND CITY'S REVIEW COMMENTS OF JUNE 10, 2025	09/26/25	TLM



DESIGN	T.L.M.
CHECKED	T.L.M.
DRAWN BY	P.M.
CHECKED	T.L.M.
APPROVED	T.L.M.

PROJECT  
**222 BASELINE ROAD**  
 PART OF LOT 72  
 REGISTERED PLAN 526  
 CITY OF OTTAWA

DRAWING TITLE  
**STORM DRAINAGE AREA PLAN**

<p><b>T.L. MAK ENGINEERING CONSULTANTS LTD.</b> CONSULTING ENGINEERS</p>		
PROJECT No. 824-74	DATE SEPTEMBER 2024	DRAWING No. D-1

