

1 LANDSCAPE PLAN
L - 01 Scale: 1:750

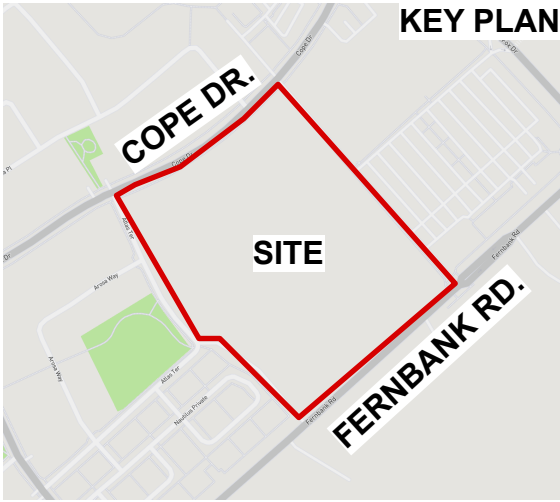
NOTE:
SITE SERVICING ELEMENTS SHOWN ON THIS SHEET ARE FOR REFERENCE ONLY.
SEE CIVIL DRAWINGS FOR SITE SERVICING / GRADING.

THIS PLAN IS ISSUED FOR SITE PLAN CONTROL SUBMISSION ONLY.
ADDITIONAL DETAILING AND SPECIFICATIONS ARE REQUIRED PRIOR TO TENDERING
AND CONS.

PLAN TO BE READ IN CONJUNCTION WITH 'TREE CONSERVATION REPORT FOR
5431 FERNBANK ROAD, OTTAWA ON' SEPTEMBER 05, 2025
BY Andrew K. Boyd, Certified Arborist #ON-0496A, IFS Associates.

LEGEND

- PROPERTY LINE
- - - PROPOSED CHAINLINK FENCE
- PROPOSED C.I.P. CONCRETE
- PROPOSED ASPHALT
- PROPOSED SOD
- PROPOSED STONEDUST PATH
- PREPOSED GRASSES / SHRUBS
- PROPOSED REFORESTATION AREA
- #O EXISTING TREES TO BE PRESERVED
- #ID EXISTING TREES TO BE REMOVED
- INVENTORY BOUNDARY
- PROPOSED PLANTING

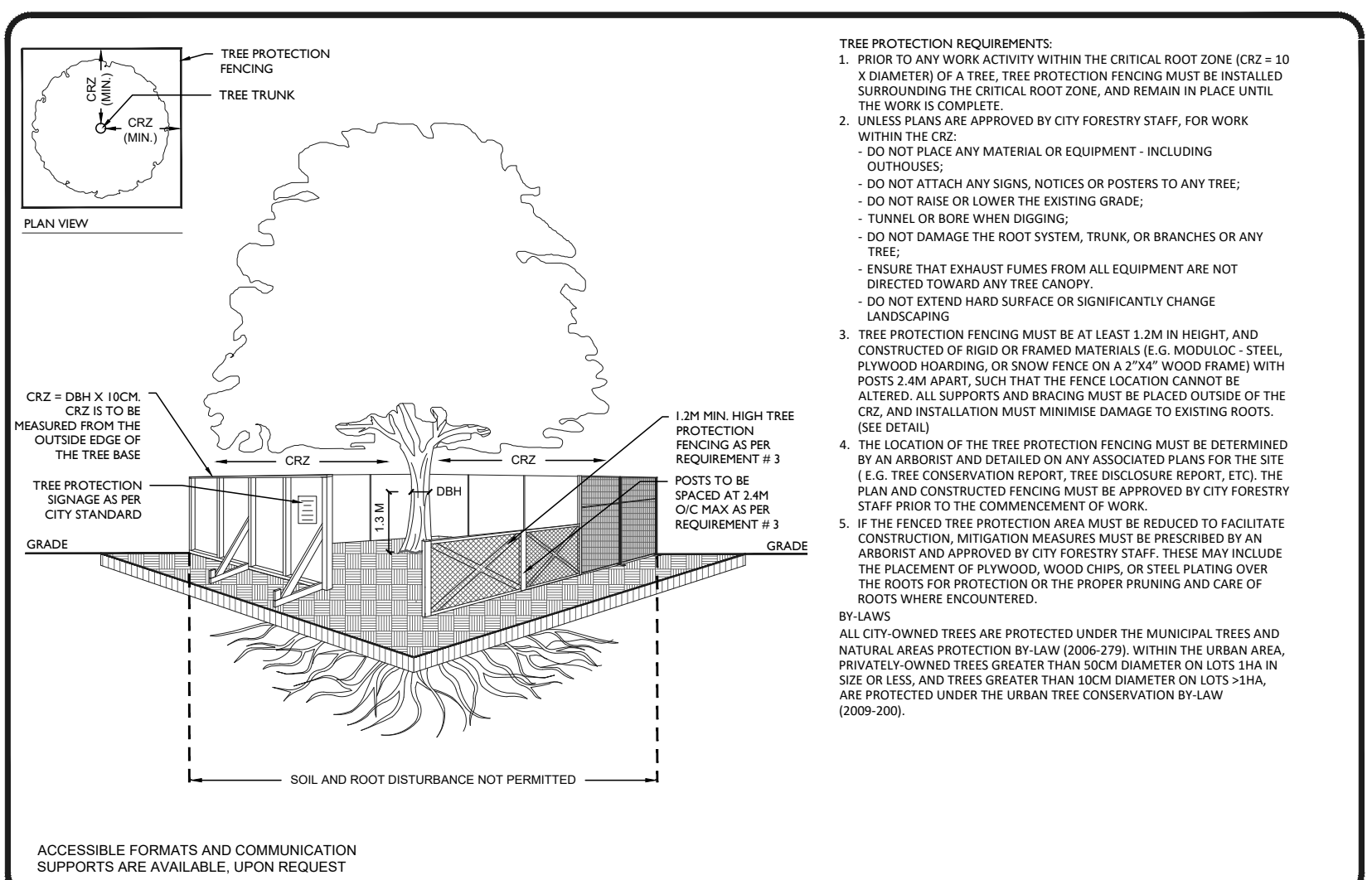


Plant List					
Origin	ID	Qty	Botanical Name	Common Name	Scheduled SiRemarks
50 LARGE DECIDUOUS TREES					
Ntv	Ar	6	Acer rubrum	Red Maple	50mm caliper WB, Staked
Ntv	As	11	Acer saccharum	Sugar Maple	70mm caliper WB, Staked
Ntv	Co	14	Celtis occidentalis	Common Hackberry	60mm caliper WB, Staked
Ntv H	GtS	6	Gleditsia triacanthos inermis 'Shademaster'	Shademaster Thornless Honeylocust	90mm caliper WB, Staked
Ntv	Qa	3	Quercus alba	White Oak	70mm caliper WB, Staked
Ntv	Qm	4	Quercus macrocarpa	Burr Oak	70mm caliper WB, Staked
Ntv	Qr	3	Quercus rubra	Northern Red Oak	70mm caliper WB, Staked
Ntv	Ta	3	Tilia americana	Basswood	70mm cal. WB, Staked
8 LARGE COLUMNAR DECIDUOUS TREES					
Ntv	TaB	8	Tilia americana 'Boulevard'	Boulevard Linden	70mm caliper WB, Staked
68 MEDIUM DECIDUOUS TREES					
Ntv	Ag	16	Aesculus glabra	Ohio Buckeye	50mm caliper WB, Staked
Ntv	Cc	6	Carpinus caroliniana	Bluebeech, Muscledwood	50mm caliper WB, Staked
Ntv	Gd	5	Gymnocladus dioica	Kentucky Coffee Tree	50mm caliper WB, Staked
Ntv	GtD	6	Gleditsia triacanthos inermis 'Draves'	Streetkeeper Honeylocust	70mm caliper WB, Staked
Non N	MD	7	Malus 'Doglo'	Malus Doglo	60mm caliper WB, Staked
Ntv	Ov	14	Ostrya virginiana	Ironwood	50mm caliper WB, Staked
Ntv	Sd	9	Sorbus Americana	Mountain Ash	45mm caliper WB, Staked
Non Ntv	UF	5	Ulmus minor x parvifolia 'Frontier'	Frontier Elm	70mm caliper WB, Staked
13 SMALL DECIDUOUS TREES					
Ntv	CcgC	12	Crataegus crus-galli inermis 'Cruzam'	Thornless Crusader Cockspur Hawthorn	45mm caliper WB, Staked
Non N	MSD	1	Malus x 'Snowdrift'	Snowdrift Crabapple	40mm caliper WB, Staked
2 ORNAMENTAL TREES					
Ntv H	AcB	2	Amelanchier canadensis 'Ballerina'	Ballerina Serviceberry (tree form)	40mm caliper WB, Staked
78 CONIFEROUS TREES					
Ntv	Ab	8	Abies balsamea	Balsam Fir	200 cm ht WB, Staked
Non N	JcBP	4	Juniperus chinensis 'Blue Point'	Blue Point Juniper	150 cm ht Potted
Ntv	Pg	9	Picea glauca	White Spruce	200 cm ht WB, Staked
Ntv	Pr	18	Pinus resinosa	Red Pine	200cm ht WB, Staked
Ntv	Ps	11	Pinus strobus	Eastern White Pine	200 cm ht. WB, Staked
Ntv H	ToDS	3	Thuja occidentalis 'Degroot's Spire'	Degroot's Spire Arborvitae	150 cm ht. Potted
Ntv H	ToH	25	Thuja occidentalis 'Holmstrup'	Holmstrup Cedar	125cm ht. Potted
40 REFORESTATION PLANTING					
	As for	5	Acer saccharum	Sugar Maple	150 cm ht. Bare root
	Asa for	5	Acer rubrum	Red Maple	150 cm ht. Bare root
	Bp for	5	Betulus papyrifera	White Birch	150 cm ht. Bare root
Native to	Ov for	5	Ostrya virginiana	American Hophornbeam	150 cm ht. Bare root
	Pa for	5	Picea glauca	White Spruce	75 cm ht. Potted

TREES UNDER CITY OWNERSHIP = 4, UNDER PRIVATE OWNERSHIP = 139

DI	264	Diervilla lonicera	Dwarf Bush-honeysuckle		2 gallon pot
HaIW	43	Hydrangea arborescens 'Invincibelle Wee White'	Wee White Annabelle Hydrangea	3 year	Potted
Hp	42	Hypericum prolificum	Shrubby St. John's Wort		2 gallon pot
HpFI	63	Hydrangea paniculata 'Fire & Ice'	Fire & Ice pannicle hydrangea		
Rp	69	Rosa palustris	Swamp Rose	3 year	Potted
Perennials					
Pv	141	Panicum virgatum	Switch Grass		1 gallon pot
PvHM	140	Panicum virgatum 'Heavy Metal'	Heavy Metal Switch Grass		
CaKF	189	Calamagrostis x acutiflora 'Karl Foerster'	Feather Reed Grass	3 year	Potted
Hs	109	Helleborus sempervirens	Ornamental Oats	3 year	Potted
PvF	38	Perennial Mix F - Shade	Ornamental Grasses - Shade		2 gallon pot

REFORESTATION					
Reforestation Trees					
As for	5	Acer saccharum	Sugar Maple	150 cm ht.	Bare root
Asa for	5	Acer rubrum	Red Maple	150 cm ht.	Bare root
Bp for	5	Betulus papyrifera	White Birch	150 cm ht.	Bare root
Ov for	5	Ostrya virginiana	American Hophornbeam	150 cm ht.	Bare root
Pg for	5	Picea glauca	White Spruce	75 cm ht.	Potted
Ps for	5	Pinus strobus	White Pine	50 cm ht.	Potted
Qm for	5	Quercus macrocarpa	Bur Oak	150 cm ht.	Bare root
Tc for	5	Tsuga canadensis	Canadian Hemlock	75 cm ht.	Potted



tree protection specification

TO BE IMPLEMENTED FOR RETAINED TREES, BOTH ON SITE AND ON ADJACENT SITES, PRIOR TO ANY TREE REMOVAL OR SITE WORKS AND MAINTAINED FOR THE DURATION OF WORK ACTIVITIES ON SITE.

SCALE: NTS

DATE: MAY 2019

DRAWING NO.: 1 of 1



GENERAL NOTES

- All general site information and conditions compiled from existing plans, surveys and consultant's field notes. Report all discrepancies prior to any work. No responsibility is born by the Consultant for unknown subsurface conditions.
- The location of the utilities is approximate only, and the exact location should be determined by consulting the municipal authorities and utility companies concerned. The Contractor shall provide the location of utilities and shall be responsible for adequate protection from damage.
- All dimensions shown are to be verified on site prior to any construction. No deviations are to be made from the layouts as shown on this plan without prior consultation with the Landscape Architect and Owner.
- Obtain approval of Landscape Architect for granular base and layout of all pavement areas prior to construction.
- Stake planting locations and receive approval of Landscape Architect, prior to excavation of any planting pits. No substitutions of plant material shall be made without prior approval of the Landscape Architect.
- Where play is encountered proper drainage must be ensured in tree/shrub pits, prior to planting. Have method approved by Landscape Architect.
- All sodded areas to receive a minimum of 150mm of topsoil over graded sub-base. If sod with mesh is used, mesh to be removed completely during sodding operations. Sod shall come from an approved source and shall be laid within 24 hours of being cut in the nursery. Only nursery sod shall be used.
- Final subgrade is to be approved by the Landscape Architect prior to sod being laid.
- Maintain positive surface runoff through the entire construction period.
- Reinstate all areas and items damaged as a result of construction activities.

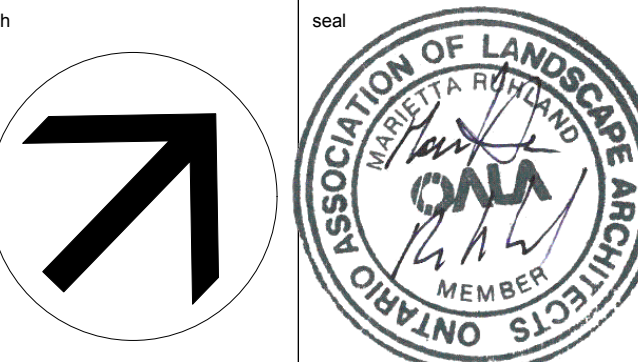
04		
03		
02	Issued for 66% Drawings	2025/10/28
01	Issued for SPC submission	2025/10/28
no.	revision	date

N45 ARCHITECTURE INC.
71 Bank Street, 7th Floor - Ottawa, Ontario, K1P 5N2
tel. 613.224.0095 fax 613.224.9811

Ruhland & Associates Ltd
landscape architecture • urban design • site planning
Ph 613-224-0744 Fx 613-224-1131 info@rala.ca www.rala.ca

FERNBANK CATHOLIC HIGH SCHOOL
OTTAWA-CARLETON DISTRICT
SCHOOL BOARD

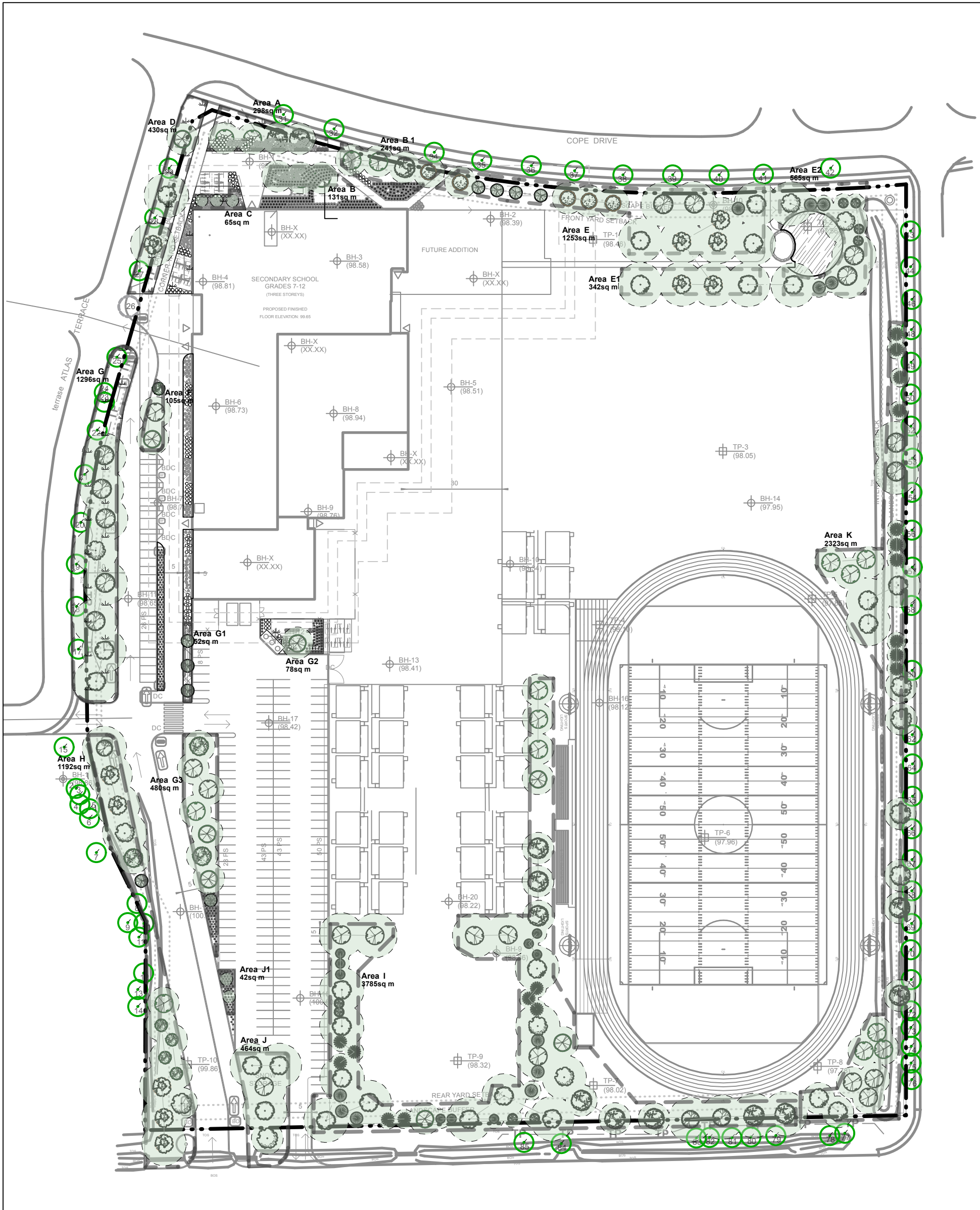
5431 Fernbank Road, Ottawa, ON



drawing title

LANDSCAPE / PLANTING PLAN

scale	drawn by
	D.A.
date	checked by
	M.R.
project number	drawing number
N45	
RA	24-1743
L - 01	
CONTRACTOR TO VERIFY ALL DIMENSIONS AND NOTIFY THE ARCHITECT OF ANY DISCREPANCIES BEFORE WORK COMMENCES.	
DO NOT SCALE DRAWINGS	



1 CANOPY COVERAGE & SOIL VOLUMES
L - 02 Scale: 1:1200

Soil Volume Area, Tree Quantity and Size	Tree Quantity	OTTAWA Target Soil Volume (m ³)	Design Soil Volume	Soil Adequacy percentage	%Soil to be supplied by contractor
AREA A - 4 Medium Trees plant bed (298 sq m x 0.4 ave metre deep)	4	120.0	119.2	99%	SEE NOTE 2
AREA B - 3 Medium Trees plant bed (131 sq m x 0.4 ave metre deep)	3	54.0	52.4	97%	SEE NOTE 1
AREA B 1 - 4 Medium Trees plant bed (241 sq m x 0.4 ave metre deep)	4	100.0	96.4	96%	SEE NOTE 1
AREA C - 3 Small Trees plant bed (65 sq m x 0.7 ave metre deep)	3	45.0	45.5	101%	SEE NOTE 1
AREA D - 2 Large, 1 Medium, 3 Existing Trees plant bed (430 sq m x 0.4 ave metre deep)	6	122.0	172.0	141%	SEE NOTE 3
AREA E - 8 Large Trees, 4 Medium Trees, 4 Small Trees, 1 Conifer plant bed (1253 sq m x 0.4 ave metre deep)	13	250.0	501.2	200%	SEE NOTE 4
AREA E1 - 4 Large Trees plant bed (342 sq m x 0.4 ave metre deep)	3	75.0	136.8	182%	SEE NOTE 4
AREA E2 - 5 Large Trees, 8 Conifers plant bed (565 sq m x 0.6 ave metre deep)	15	319.0	339.0	106%	SEE NOTE 4
AREA F - 2 Medium Trees, 1 Small Tree plant bed (105 sq m x 0.5 ave metre deep)	3	51.0	52.5	103%	SEE NOTE 1
AREA G - 8 Large, 9 Existing Trees plant bed (1296 sq m x 0.4ave metre deep)	17	240.0	518.4	216%	SEE NOTE 3
AREA G1 - 3 Small Tree plant bed (51.6 sq m x 0.8ave metre deep)	3	45.0	41.3	92%	SEE NOTE 1
AREA G2 - 1 Medium Trees plant bed (78.5 sq m x 0.4ave metre deep)	1	30.0	31.4	105%	SEE NOTE 1
AREA G3 - 7 Medium Trees, 1 Small Tree plant bed (479 sq m x 0.4ave metre deep)	8	144.0	191.6	133%	SEE NOTE 1
AREA H - 4 Large, 3 L.Columnnar, 7 Medium, 1 Small Trees plant bed (1192 sq m x 0.4ave metre deep)	15	438.0	476.8	109%	SEE NOTE 3
AREA I - 20 Large, 12 Medium Trees, 27 Con. plant bed (3563 sq m x 0.4ave metre deep)	59	1062.0	1425.2	134%	SEE NOTE 4
AREA J - 4 Large, 1 Medium tree plant bed (464 sq m x 0.4ave metre deep)	5	138.0	185.6	134%	SEE NOTE 1
AREA J1 - 2 Ornamental trees plant bed (41 sq m x 0.4ave metre deep)	2	18.0	16.4	91%	SEE NOTE 1
AREA K - 3 L. Columnnar, 2 Large, 17 Medium, 10 Con. plant bed (2323 sq m x 0.4ave metre deep)	32	840.0	929.2	111%	SEE NOTE 4

* Smaller columnnar trees, small ornamental trees with growth to 8-15cm DBH, large shrubs, and columnnar conifers calculated

LEGEND

- EXISTING TREES TO BE PRESERVED
- PROPOSED PLANTING
- TP TREE PROTECTION FENCE

TREE CANOPY COVERAGE		
TOTAL CANOPY AREA	13613	m2
TOTAL SITE AREA	73966	m2
PERCENT COVERAGE	18.40%	

NOTES:

PLANTING MEDIUM REQUIREMENTS FOR TREE PLANTING

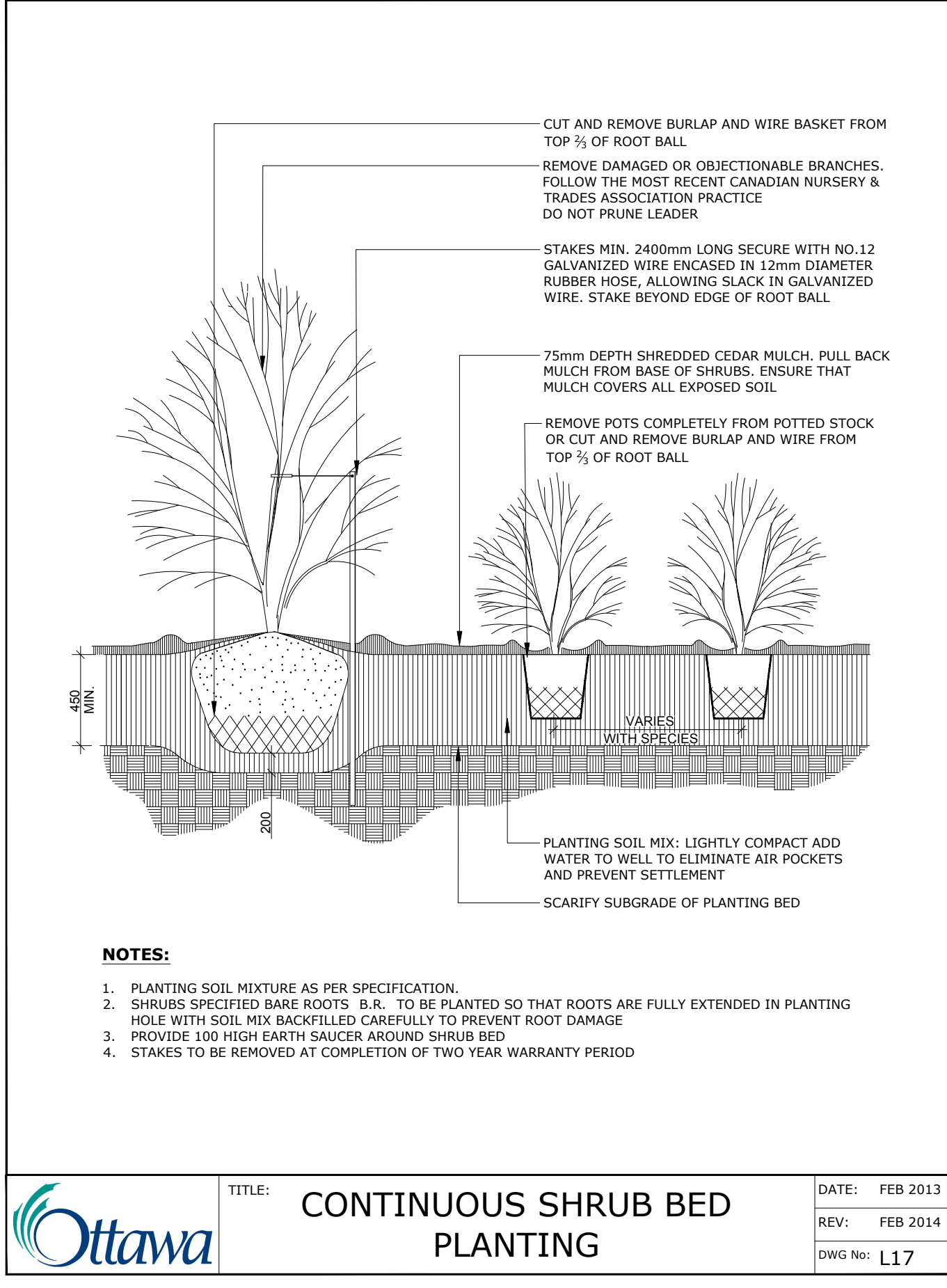
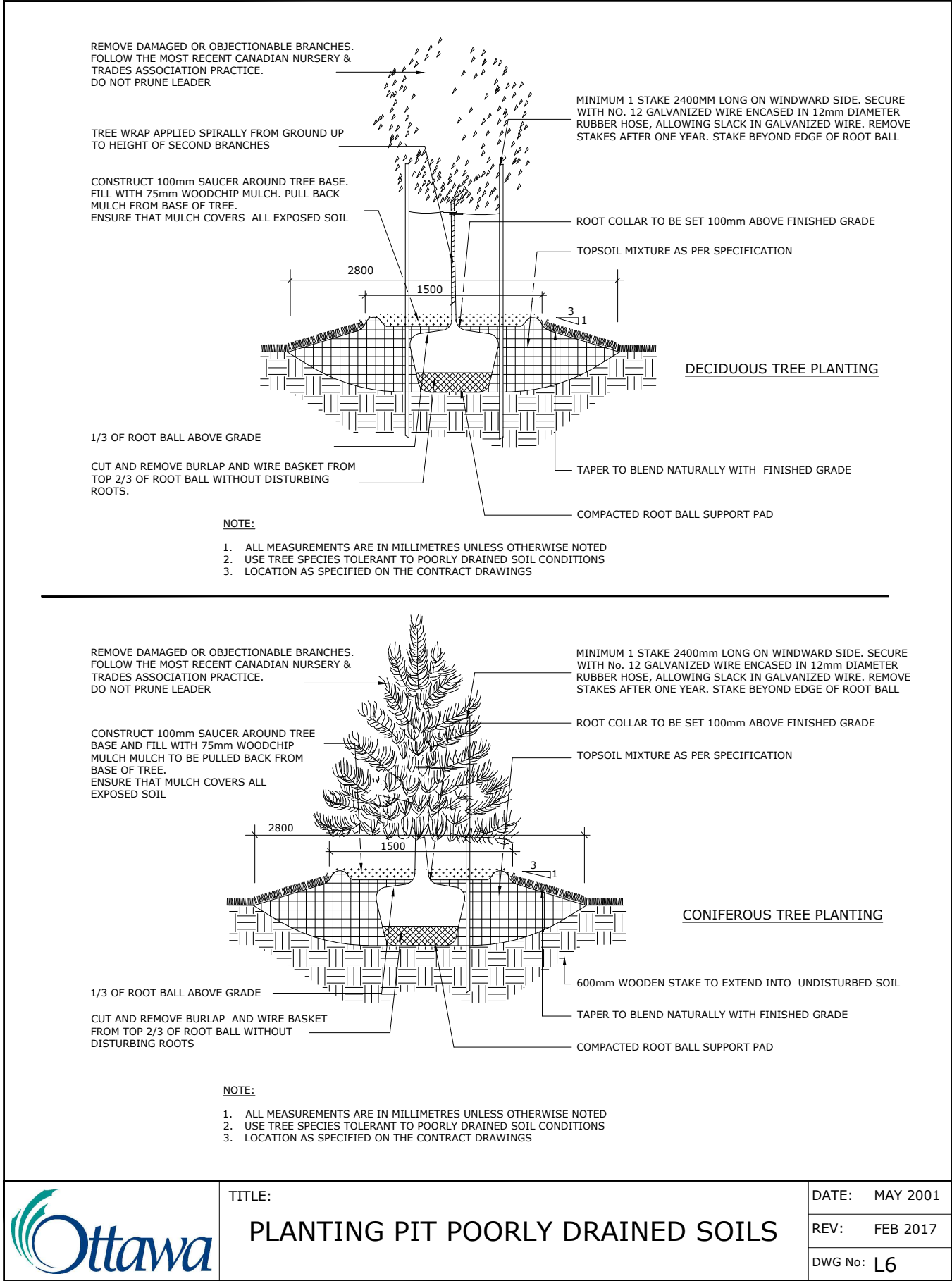
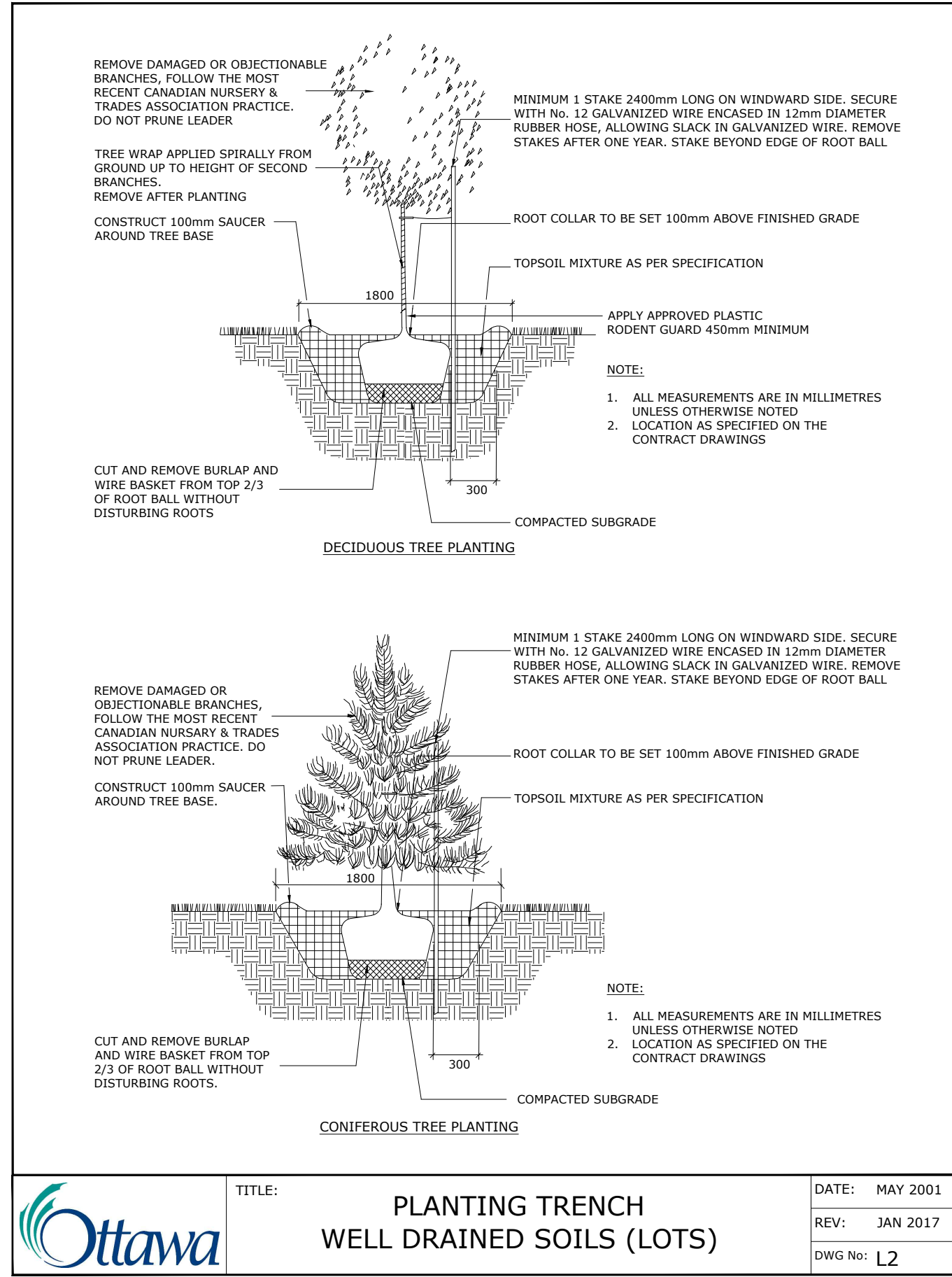
- WHERE SOIL VOLUMES ARE WITHIN EXCAVATED DEVELOPMENT AREA:**
PROVIDE 100% PLANTING MEDIUM TO DEPTHS INDICATED IN SOIL VOLUME CHART.
WHERE SUBSOIL BELOW THE INDICATED DEPTH OF PLANTING MEDIUM IS NOT CONDUCTIVE TO PLANT GROWTH, REPLACE WITH APPROVED SUBSOIL TO A FURTHER DEPTH OF 300mm.
- WHERE SOIL VOLUMES INCLUDE SOIL VOLUMES IN R.O.W. AT PROPERTY LINE R.O.W. AND WITHIN SUBJECT PROPERTY:**
ASSUME ALL SOIL VOLUME REQUIREMENTS ARE MET WITHIN THE R.O.W. AREA. REINSTATE ANY DISTURBED AREAS IN R.O.W. OUTSIDE THE 2m RADIUS TREE PITS WITH 100-150mm TOPSOIL AND SOD.
PLACE PLANTING MEDIUM (TO DEPTH INDICATED ON SOIL VOLUME CHART) AT ALL DISTURBED AREAS WHERE EXISTING SOILS ARE REMOVED, OR WHERE EXISTING SOILS ARE NOT CONDUCTIVE TO PLANT GROWTH.
ADDITIONAL PLANTING MEDIUM IS NOT REQUIRED WHERE EXISTING SOIL IS PRESENT IN OR ADJACENT TO THE R.O.W. THIS DOES NOT INCLUDE TOPSOIL REQUIRED FOR SODDING.
WHERE SUBSOIL BELOW THE INDICATED DEPTH OF PLANTING MEDIUM IS NOT CONDUCTIVE TO PLANT GROWTH, REPLACE WITH APPROVED SUBSOIL TO A FURTHER DEPTH OF 300mm.
BASE CONTRACT TO ASSUME SUBSOIL IS CONDUCTIVE TO PLANT GROWTH.
- WHERE SOIL VOLUMES INCLUDE SOIL VOLUMES ON ADJACENT PROPERTY AT PROPERTY LINE**
ADJACENT PROPERTY AND WITHIN SUBJECT PROPERTY:
ASSUME ALL SOIL VOLUME REQUIREMENTS ARE MET WITHIN THE ADJACENT PROPERTY AREA. REINSTATE ANY DISTURBED AREAS ON ADJACENT PROPERTY OUTSIDE THE 2m RADIUS TREE PITS WITH 100-150mm TOPSOIL AND SOD.
PLACE PLANTING MEDIUM (TO DEPTH INDICATED ON SOIL VOLUME CHART) AT ALL DISTURBED AREAS WHERE EXISTING SOILS ARE REMOVED, OR WHERE EXISTING SOILS ARE NOT CONDUCTIVE TO PLANT GROWTH.
ADDITIONAL PLANTING MEDIUM IS NOT REQUIRED WHERE EXISTING SOIL IS PRESENT IN OR ADJACENT TO THE ADJACENT PROPERTY. THIS DOES NOT INCLUDE TOPSOIL REQUIRED FOR SODDING.
WHERE SUBSOIL BELOW THE INDICATED DEPTH OF PLANTING MEDIUM IS NOT CONDUCTIVE TO PLANT GROWTH, REPLACE WITH APPROVED SUBSOIL TO A FURTHER DEPTH OF 300mm.
BASE CONTRACT TO ASSUME SUBSOIL IS CONDUCTIVE TO PLANT GROWTH.
- AREAS NEAR SOCCER FIELD AND OUTDOOR CLASSROOM**
ASSUME ALL SOIL VOLUME REQUIREMENTS ARE MET, REINSTATE ANY DISTURBED AREAS ON ADJACENT PROPERTY OUTSIDE THE 2m RADIUS TREE PITS WITH 100-150mm TOPSOIL AND SOD.
ADDITIONAL PLANTING MEDIUM IS NOT REQUIRED WHERE EXISTING SOIL IS PRESENT IN OR ADJACENT TO THE ADJACENT PROPERTY. THIS DOES NOT INCLUDE TOPSOIL REQUIRED FOR SODDING.
WHERE SUBSOIL BELOW THE INDICATED DEPTH OF PLANTING MEDIUM IS NOT CONDUCTIVE TO PLANT GROWTH, REPLACE WITH APPROVED SUBSOIL TO A FURTHER DEPTH OF 300mm.
BASE CONTRACT TO ASSUME SUBSOIL IS CONDUCTIVE TO PLANT GROWTH.

NOTES:

TREE SOIL VOLUME REQUIREMENTS:
STANDARD TREE SOIL VOLUMES QUANTITIES INCLUDE THE TOP 900-1000mm OF SOIL/EXISTING SUBSOIL LAYER TO CALCULATE TOTAL SOIL VOLUMES REQUIRED BY CITY OF OTTAWA FOR SUSTAINABLE TREE GROWTH. WHERE LARGER SOFT AREAS ARE AVAILABLE, THE TOP 400-500mm LAYER IS USED TO CALCULATE SOIL VOLUMES (AS PER CITY DETAL L1).

WHERE EXISTING MATERIAL BELOW THE SPECIFIED IMPORTED TOPSOIL IS NOT CONDUCTIVE TO TREE GROWTH, AN ADDITIONAL LAYER OF PLANTING MEDIUM IS TO BE INSTALLED BELOW SPECIFIED TOPSOIL DEPTH TO OBTAIN THE SOIL VOLUME DEPTH REQUIRED.

REFER TO SOIL VOLUME CHART AND PLANS ON L-02 FOR AREAS WHERE TREE SOIL VOLUMES ARE REQUIRED.



OTTAWA - CARLETON
DISTRICT SCHOOL BOARD

GENERAL NOTES

- All general site information and conditions compiled from existing plans, surveys and consultant's field notes. Report all discrepancies prior to any work. No responsibility is born by the Consultant for unknown subsurface conditions.
- The location of the utilities is approximate only, and the exact location should be determined by consulting the municipal authorities and utility companies concerned. The Contractor shall provide the location of utilities and shall be responsible for adequate protection from damage.
- All dimensions shown are to be verified on site prior to any construction. No deviations are to be made from the layouts as shown on this plan without prior consultation with the Landscape Architect and Owner.
- Obtain approval of Landscape Architect for granular base and layout of all pavement areas prior to construction.
- Stake planting locations and receive approval of Landscape Architect, prior to excavation of any planting pits. No substitutions of plant material shall be made without prior approval of the Landscape Architect.
- Where play is encountered proper drainage must be ensured in tree/shrub pits, prior to planting. Have method approved by Landscape Architect.
- All sodded areas to receive a minimum of 150mm of topsoil over graded sub-base. If sod with mesh is used, mesh to be removed completely during sodding operations. Sod shall come from an approved source and shall be laid within 24 hours of being cut in the nursery. Only nursery sod shall be used.
- Final subgrade is to be approved by the Landscape Architect prior to sod being laid.
- Maintain positive surface runoff through the entire construction period.
- Reinstate all areas and items damaged as a result of construction activities.

04		
03		
02	Issued for 66% Drawings	2025/10/28
01	Issued for SPC submission	2025/10/28
no.	revision	date

N45 ARCHITECTURE INC.

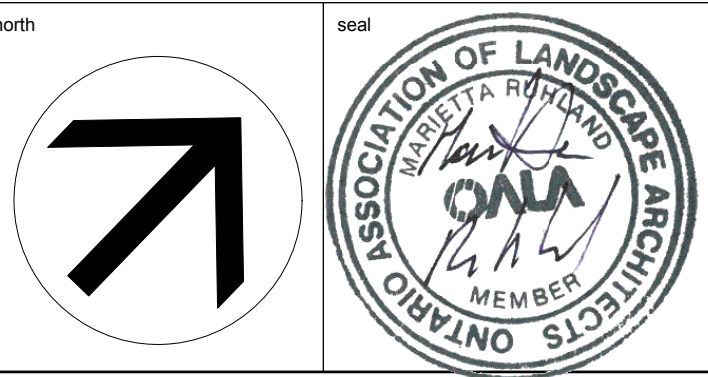
71 Bank Street, 7th Floor - Ottawa, Ontario, K1P 5N2
tel. 613.224.0095 fax 613.224.9811

Ruhland & Associates Ltd

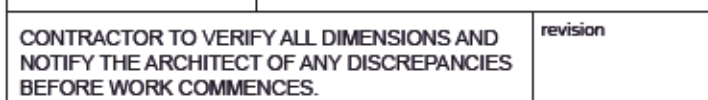
landscape architecture • urban design • site planning
Ph 613-224-0744 Fx 613-224-1131 info@ral.ca www.ral.ca

FERNBANK CATHOLIC HIGHSCHOOL
OTTAWA-CARLETON DISTRICT
SCHOOL BOARD

5431 Fernbank Road, Ottawa, ON



drawing title	
CANOPY COVERAGE & SOIL VOLUMES	
scale 1:400	drawn by D.A.
date	checked by M.R.
project number N45	drawing number —
RA 24-1743	L - 02
CONTRACTOR TO VERIFY ALL DIMENSIONS AND NOTIFY THE ARCHITECT OF ANY DISCREPANCIES BEFORE WORK COMMENCES.	
DO NOT SCALE DRAWINGS	



ADDITIONAL NOTES :
 PRECAST PAVERS IN VEHICULAR AREAS TO
 RECEIVE SAME BASE STRUCTURES FOR GRANULAR A' AND B'
 AS GEOTECHNICAL RECOMMENDATIONS FOR HEAVY DUTY PAVEMENT.
 PEDESTRIAN AREAS ARE TO RECEIVE 200mm COMPACTED GRANULAR A'
 MINIMUM, ADJUSTMENTS TO BE SPECIFIED IN RELATION TO SITE
 CONDITIONS AND GEOTECHNICAL RECOMMENDATIONS.

Confidential information contained herein is the property of Equiparc. Intended use is limited to professionals specifying Equiparc's products and their direct clients. All information is not to be copied or disclosed to others without the written consent of Equiparc. All rights reserved - Equiparc
 Manufacturier d'Équipement de Parcs

T: 1 800 363 9264 F: 1 866 346 2538	www.equiparc.com info@equiparc.com	1001, rue James-Brodie Saint-Jean-sur-Richelieu, QC Canada J2X 0C6
--	--	---