



NEW CATHOLIC HIGH SCHOOL RIVERSIDE SOUTH

675 Borbridge Ave, Manotick, ON K4M 0E2
GRC Project # : 240097

CIVIL DRAWINGS

C000	COVER SHEET
C001	NOTES AND DETAILS
C100	EXISTING CONDITIONS & REMOVALS PLAN
C100	SITE SERVICING PLAN
C200-1	SITE GRADING PLAN - INTERIM
C200-2	SITE GRADING PLAN - ULTIMATE
C300	EROSION & SEDIMENT CONTROL PLAN
C500	POST-DEVELOPMENT SITE CATCHMENTS

LANDSCAPE DRAWINGS

L.1	LANDSCAPE PLAN
-----	----------------

ARCHITECTURAL DRAWINGS

A001	SITE PLAN
A002	SITE PLAN DETAILS
A101	GROUND FLOOR - OVERALL
A102	SECOND FLOOR - OVERALL
A103	ROOF PLAN - OVERALL
A201	BUILDING ELEVATIONS
A202	BUILDING ELEVATIONS



ARTIST RENDERING FOR REFERENCE PURPOSES ONLY



ARTIST RENDERING FOR REFERENCE PURPOSES ONLY

Revised per city comments

September 11, 2025

FILE NUMBER: D07-12-25-0045

PLAN NUMBER #19337

CIVIL/SITE SERVICES

EXP
2650 QUEENSVIEW DR.,
SUITE 100
OTTAWA, ON K2B 8H6

LANDSCAPE

JAMES B LENNOX
3332 CARLING AVE.,
OTTAWA, ON K2H 5A8
T: 613-722-5168

STRUCTURAL

BPA
1960 RUE ROBERTSON
NEPEAN, ON K2H 5H9
T: 613-591-1533

ARCHITECTURAL

GRC ARCHITECTS - A PROVENCHER ROY
COMPANY
401-47 CLARENCE STREET
OTTAWA, ONTARIO K1N 9K1
T: 613-241-8203 F: 613-241-4180

MECHANICAL / ELECTRICAL

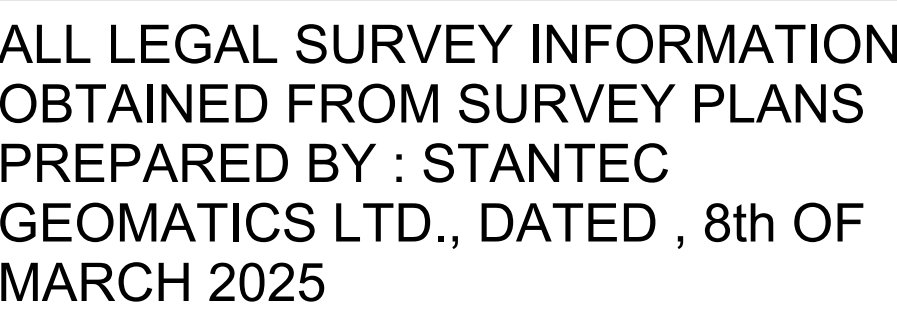
LCA
940 BELFAST ROAD, SUITE 203
OTTAWA, ON K1G 4A2
T: 819-243-8383


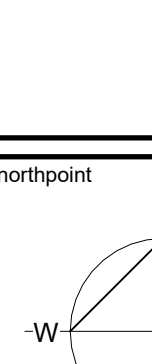
THEATRE CONSULTANT

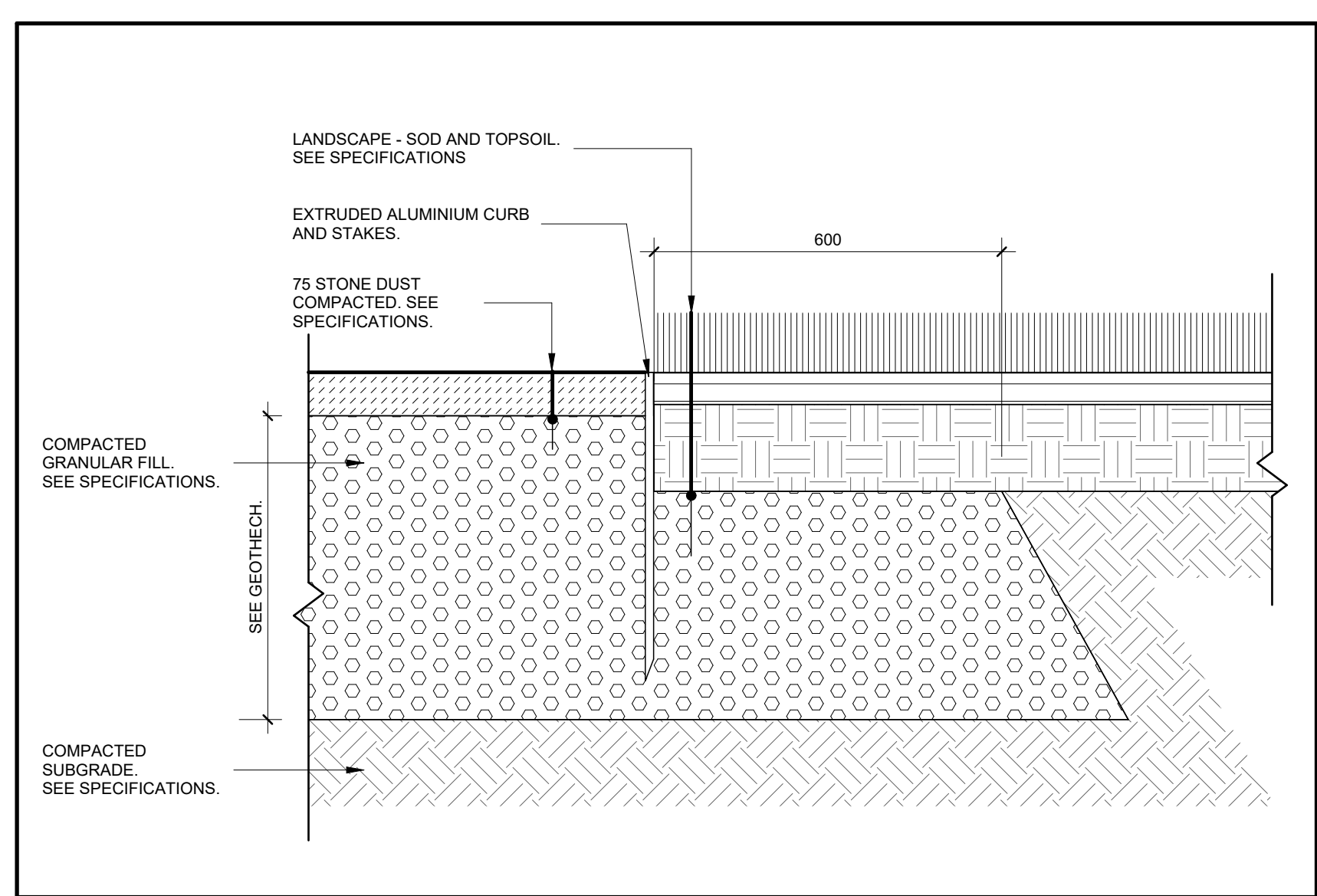
MARTIN CONBOY LIGHT DESGIN
95 GOULBURN AVE,
OTTAWA, ON K1N 8C9
T: 613-371-1585

FOODSERVICE CONSULTANT

SOCIETY INTERNATIONAL
1671 ORFORD CRESCENT
OTTAWA, ON K4V 1V3

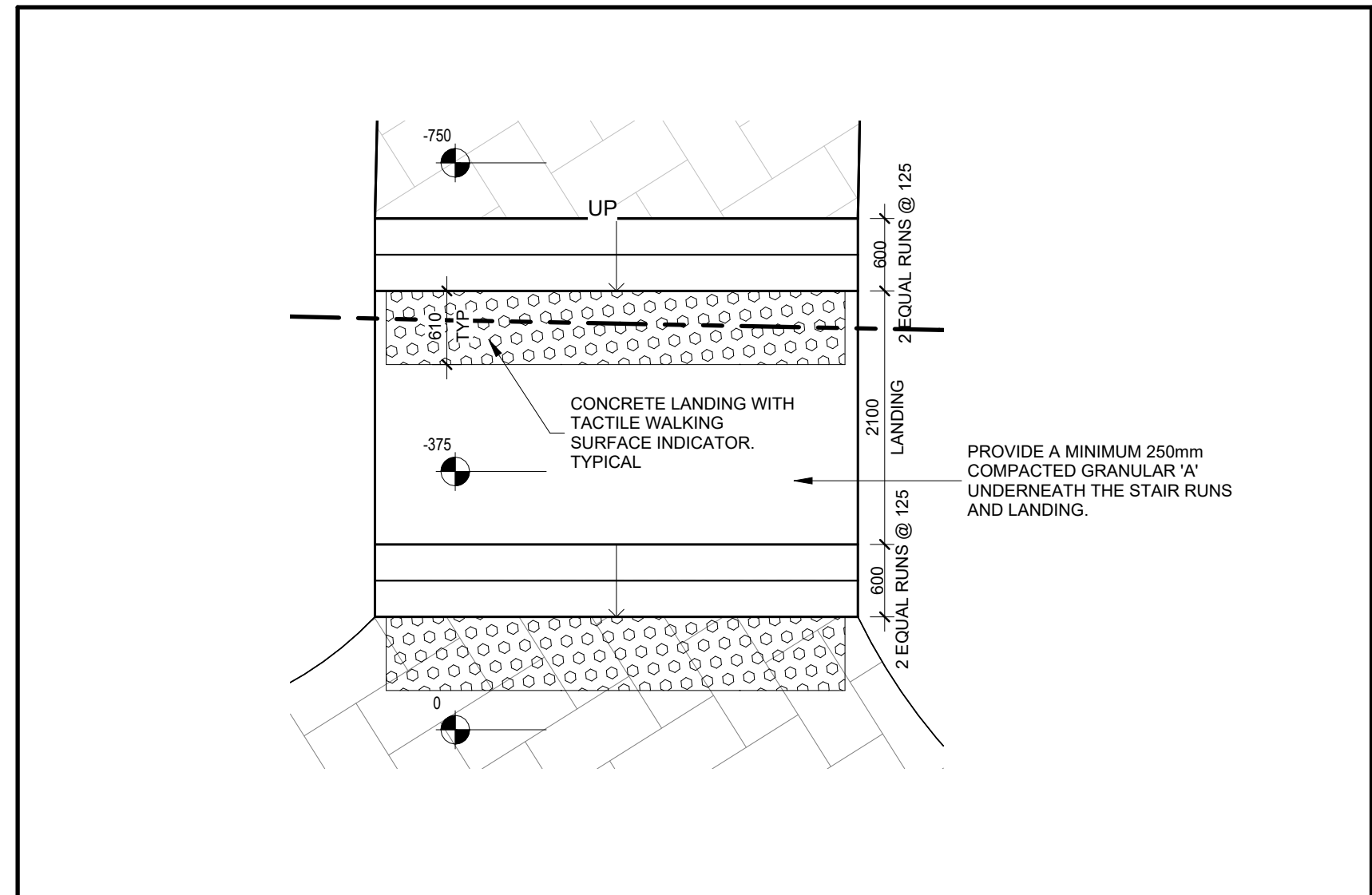


 Écoles catholiques Centre-Est			
9	September 11, 2025	Revised per city comments.	CJ
8	September 11, 2025	Issued with Addendum #7.	CJ
7	July 31st 2025	Issued for Tender.	CJ
6	July 07th 2025	Issued for Building Permit	CJ
5	July 02nd 2025	Issued for 95% Client Review	CJ
4	June 18th 2025	Issued for Site Plan Control H1	CJ
3	May 9th 2025	Issued for 66% Client Review	CJ
2	April 4th 2025	Issued for Site Plan Control	CJ
1	March 14th 2025	Issued for 33% Client Review	CJ
no.	date	revision / issue	by
<h2 style="margin: 0;">grc architects</h2> <p style="margin: 0;">A PROVENCHER ROY COMPANY</p> <p style="margin: 0;">47 Clarence Street, Suite 401 Ottawa, Ontario K1N 6K1 t: 613-241-8203 f: 613-242-4180 info@grcarchitects.com www.grcarchitects.com</p>			
consultant			
northpoint 		professional stamp <div style="border: 1px solid black; height: 60px; width: 100%;"></div>	
project title <h2 style="margin: 0;">NEW CATHOLIC HIGH SCHOOL RIVERSIDE SOUTH</h2> <p style="margin: 0;">Manitock Ontario</p>			
drawing title			
<h2 style="margin: 0;">SITE PLAN</h2>			
date MAY 28 2025 scale As indicated drawn JG approved C./PD/PR plot date 03/19/13 plan number #19337	job. no. <div style="border: 1px solid black; padding: 5px; background-color: #f0f0f0;">240097</div> drawing no. <div style="border: 1px solid black; padding: 5px; background-color: #f0f0f0;">A001</div> file no. D07-12-25-0045		
1 DO NOT SCALE FROM THIS DRAWING. 2 CONTRACTOR TO VERIFY ALL DIMENSIONS AND NOTIFY THE ARCHITECT OF ANY DISCREPANCIES BEFORE WORK COMMENCES. 3 THIS DRAWING TO BE READ IN CONJUNCTION WITH THE ARCHITECT'S OR ANY DISCREPANCIES BEFORE WORK COMMENCES.			



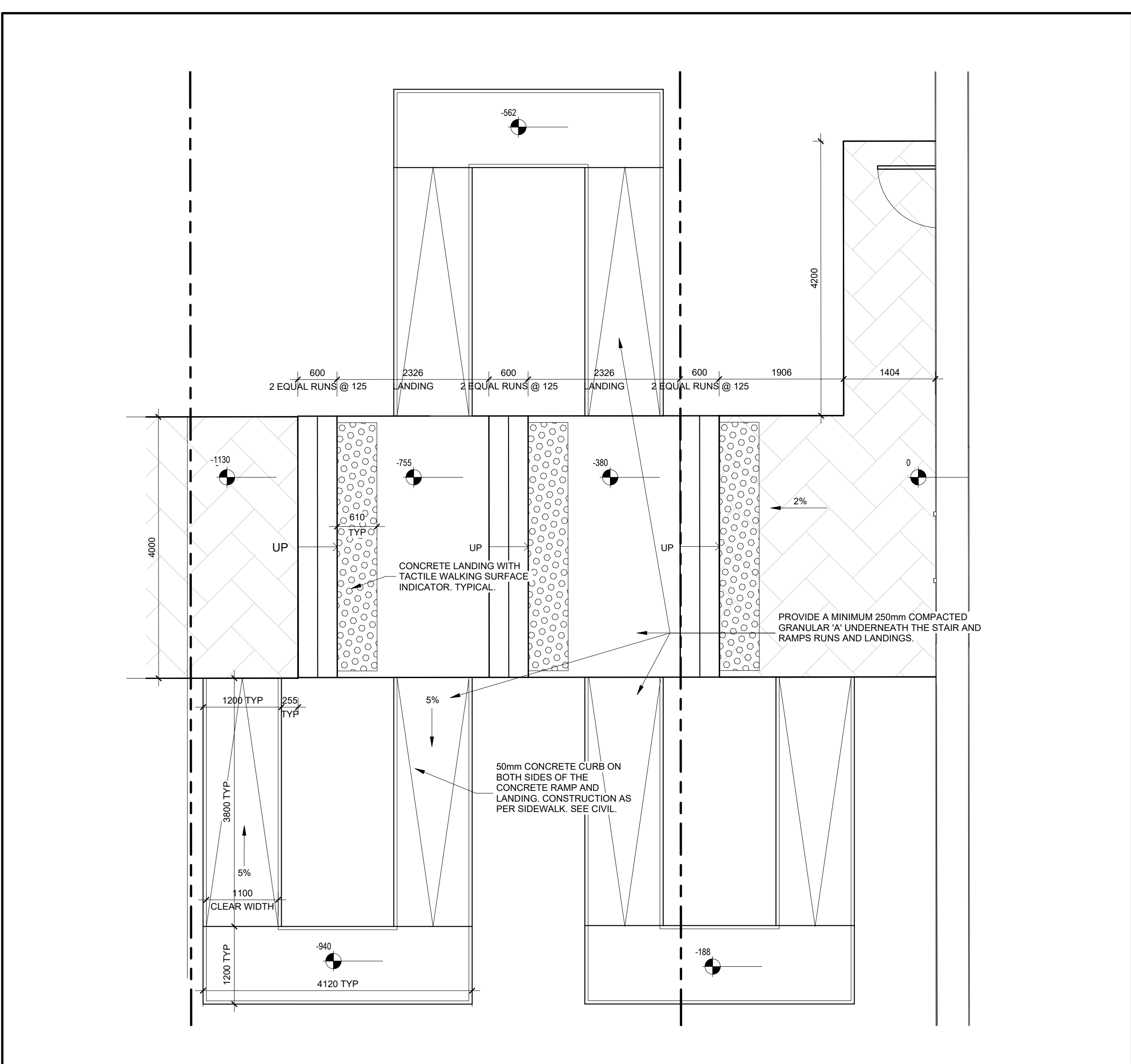
7 RUNNING TRACK

A002 1:10



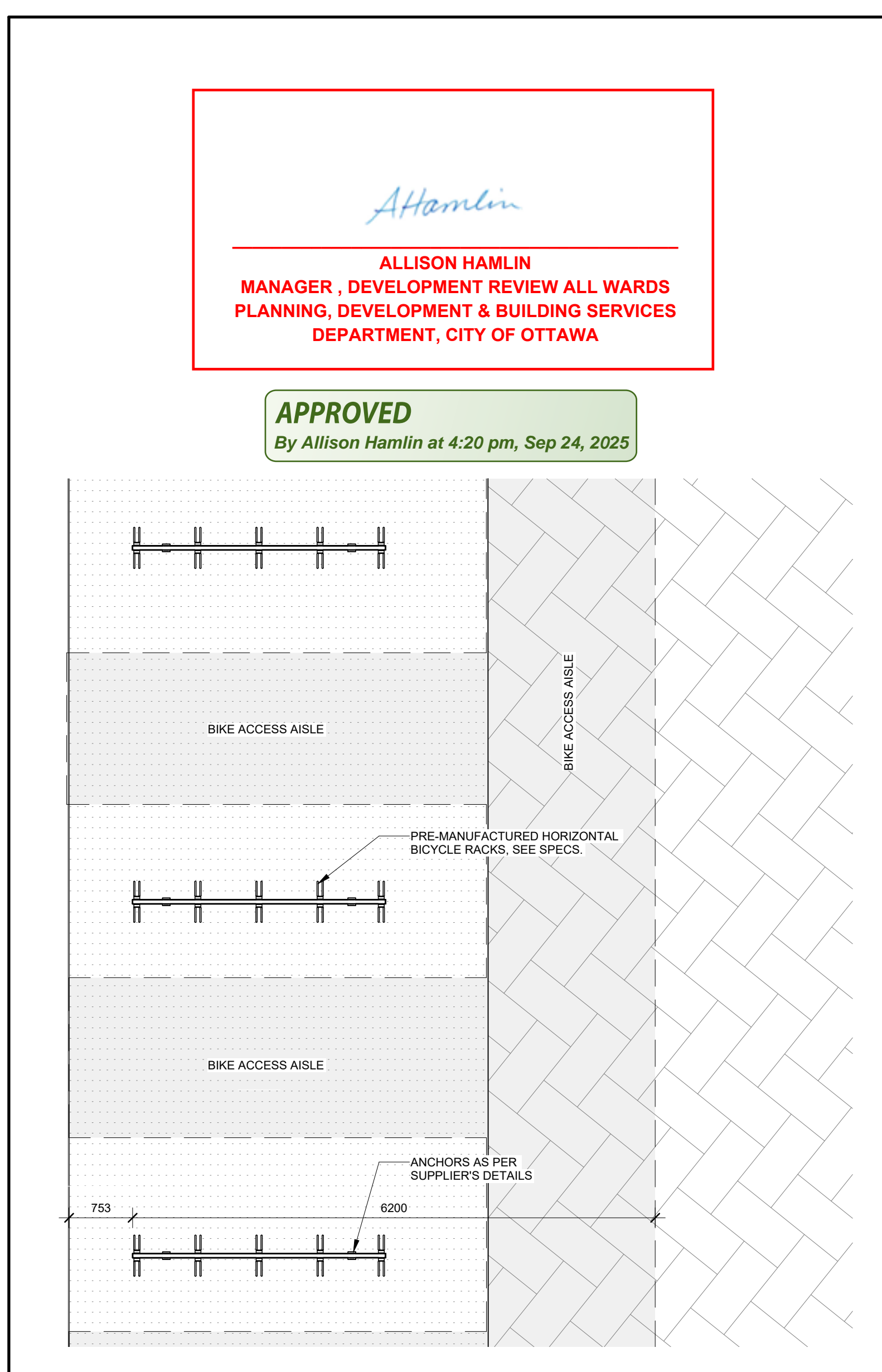
8 MAIN ENTRANCE - STAIR DETAIL

A002 1:50



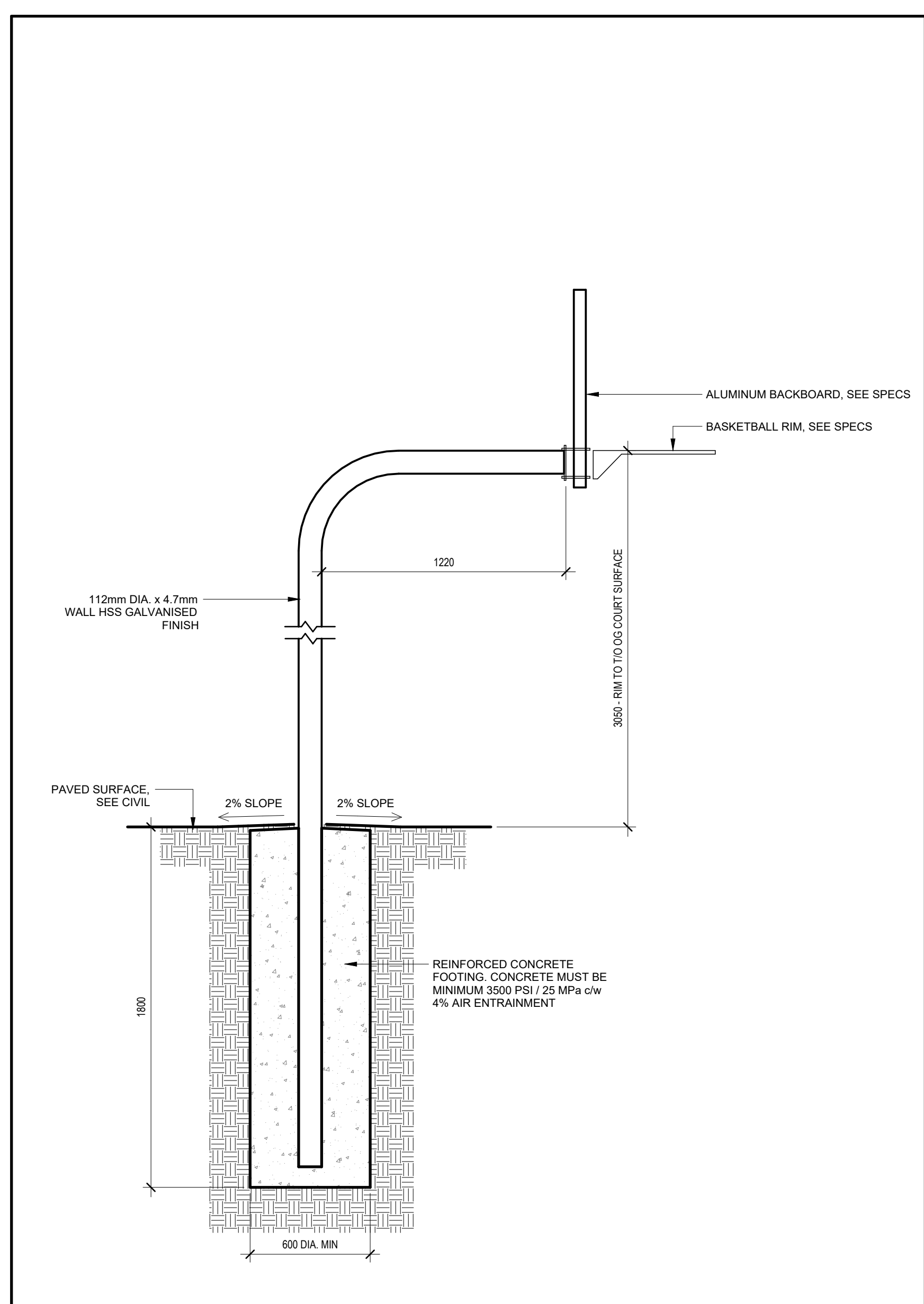
9 SECONDARY ENTRANCE - STAIR & RAMP DETAIL

A002 1:50



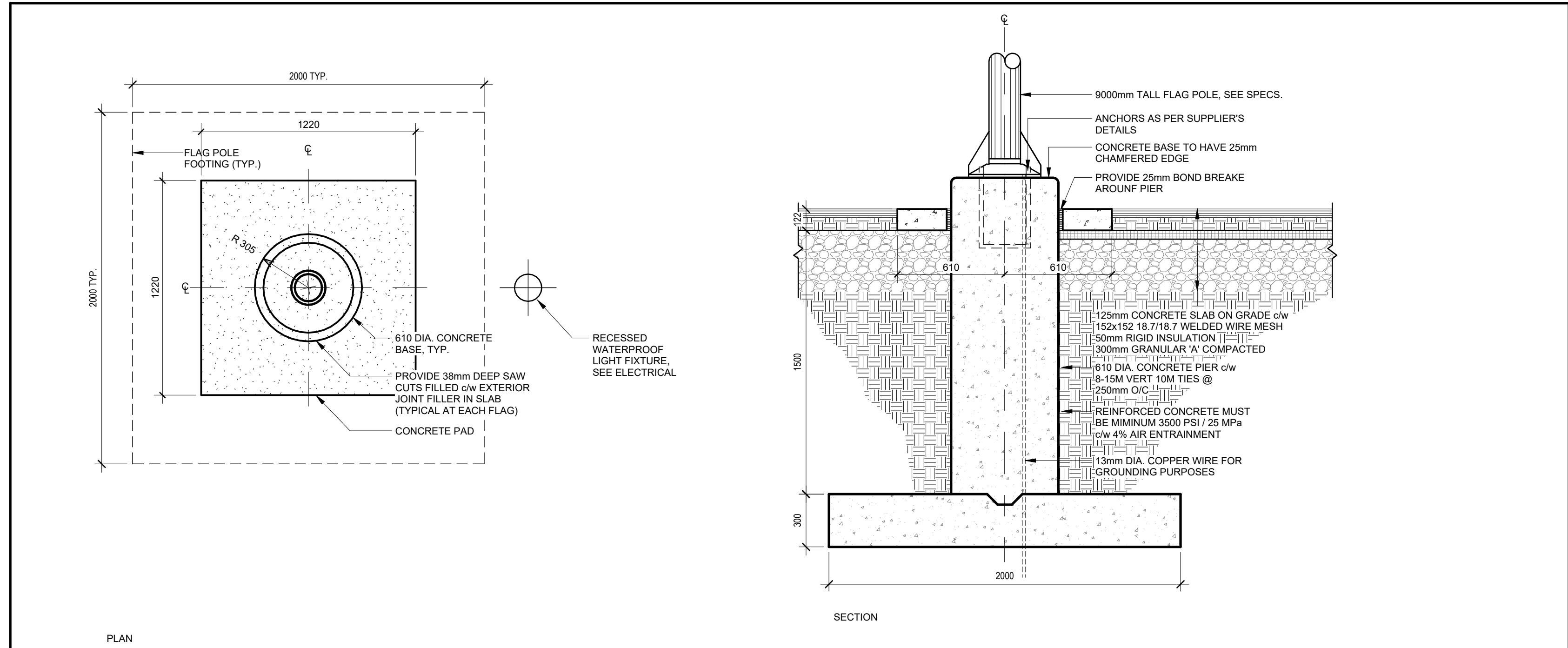
3 TYPICAL BIKE PARKING SPACE DIMENSION

A002 1:50



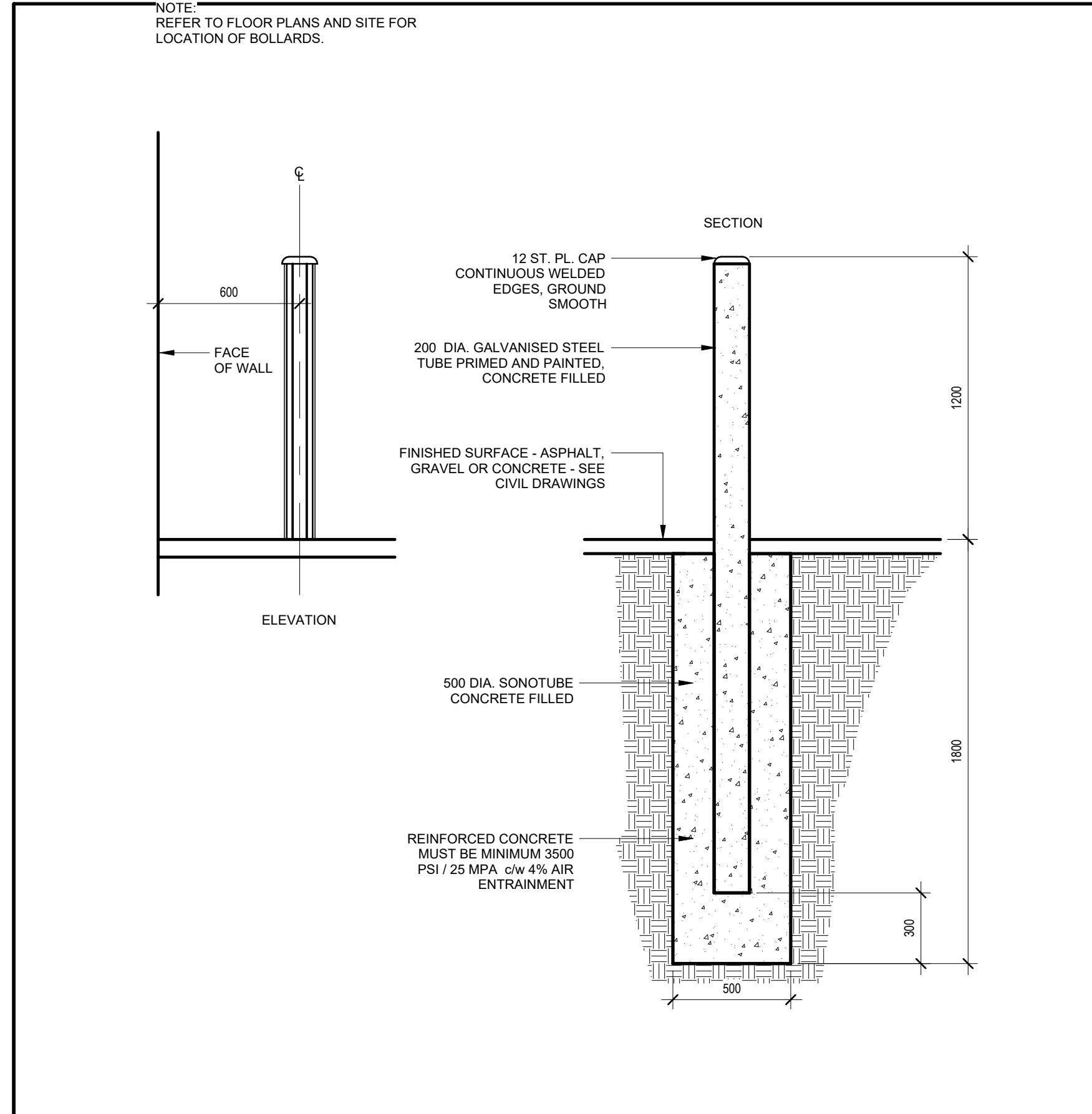
2 BASKETBALL HOOP BASE TYPICAL DETAIL

A002 1:20



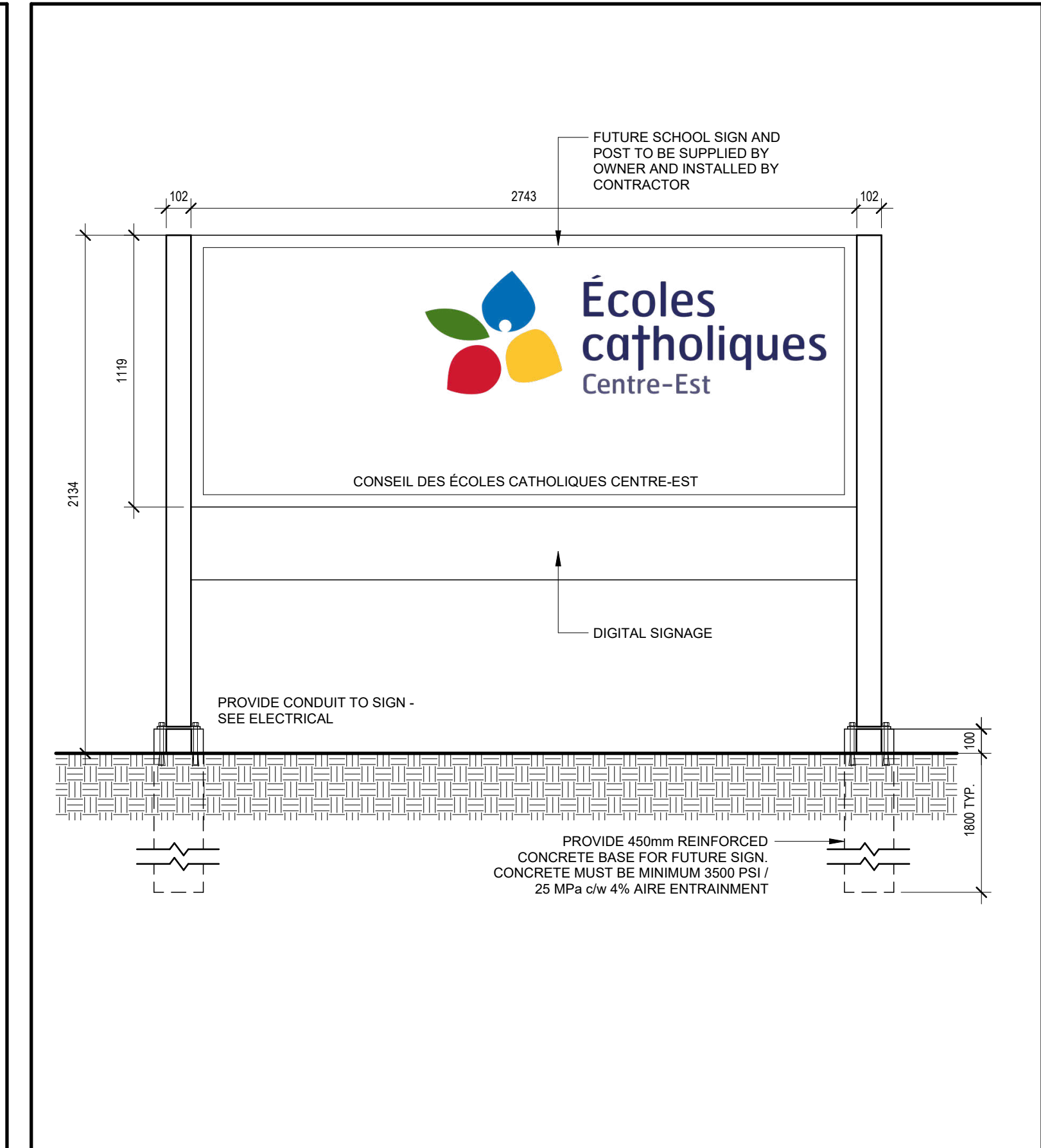
5 FLAG POLE TYPICAL DETAIL

A002 1:20



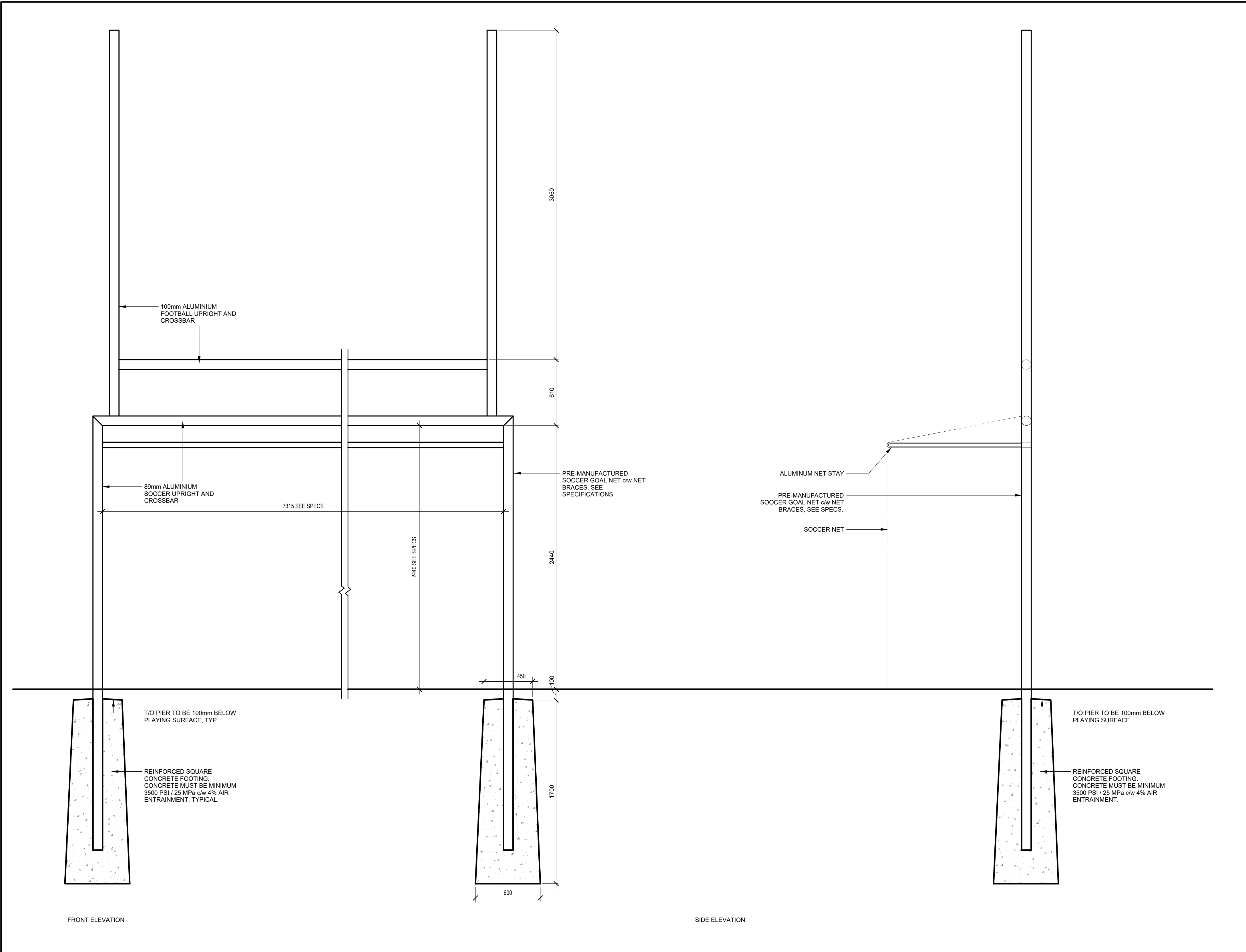
6 BOLLARDS TYPICAL DETAIL

A002 1:20



4 SCHOOL TITLE SIGNAGE TYPICAL DETAIL

A002 1:20



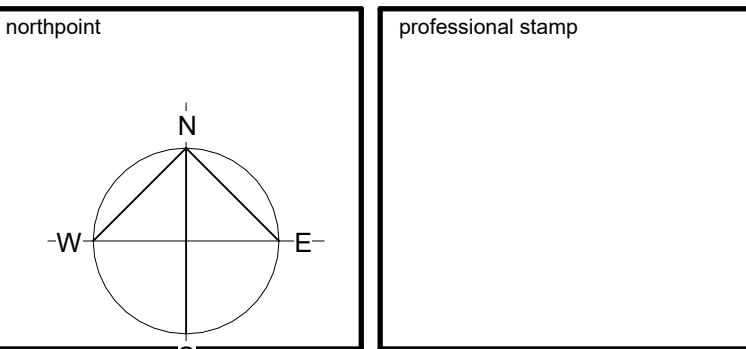
1 IN-GROUND SOCCER GOAL POST

A002 1:20

8	September 11, 2025	Revised per city comments	CJ
7	September 11, 2025	Issued with Addendum #7	CJ
6	July 31st 2025	Issued for Tender	CJ
5	July 07th 2025	Issued for Building Permit	CJ
4	July 02nd 2025	Issued for 99% Client Review	CJ
3	June 18th 2025	Issued for Site Plan Control R11	CJ
2	May 09th 2025	Issued for 66% Client Review	CJ
1	April 0th 2025	Issued for Site Plan Control	CJ
no.	date	revision / issue	by

grc architects
A PROVENCHER ROY COMPANY
47 Clarence Street, Suite 401
Ottawa, Ontario K1N 9K1
t: 613-241-6203 f: 613-242-4190
info@grcarchitects.com www.grcarchitects.com

consultant

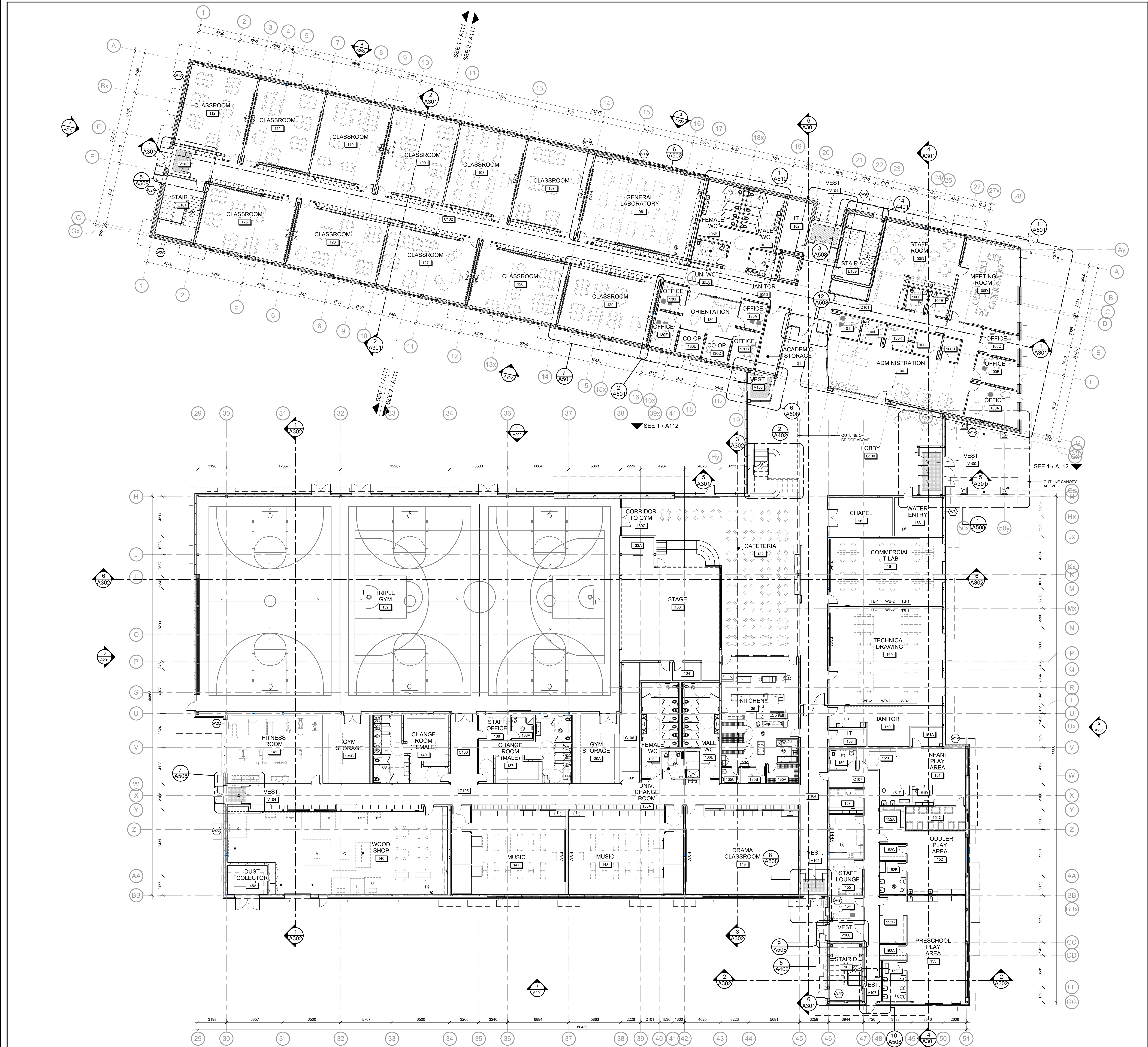


project title
NEW CATHOLIC HIGH SCHOOL RIVERSIDE SOUTH
Mantick Ontario

SITE PLAN DETAILS

date	MAY 28 2025	job no.	
scale	As indicated		240097
drawn	JG	drawing no.	
approved	CJ/PP/PR		A002
plot date	03/19/13	file no.	
plan number	#19337		D07-12-25-0045

1. DO NOT SCALE FROM THIS DRAWING.
2. CONTRACTOR TO VERIFY ALL DIMENSIONS AND NOTIFY THE ARCHITECT OF ANY DISCREPANCIES BEFORE WORK COMMENCES.
3. THIS DRAWING TO BE READ IN CONJUNCTION WITH THE FOLLOWING DRAWINGS: STRUCTURAL, MECHANICAL, ELECTRICAL.



GENERAL NOTES

- DO NOT SCALE THIS DRAWING.
- ALL DIMENSIONS ARE IN MILLIMETERS EXCEPT GRADE, FLOOR ELEVATIONS AND PROPERTY LINE DIMENSIONS (SHOWN IN METERS).
- ALL DIMENSIONS ARE TO FACE OF METAL STUDS, CONCRETE BLOCK, CONCRETE, OR GRIDLINE, UNLESS NOTED OTHERWISE.
- EXTEND ALL INTERIOR PARTITIONS TO UNDERSIDE OF STEEL DECK, UNLESS OTHERWISE NOTED.
- REFER TO TYPICAL TOP OF WALL DETAILS FOR CLOSURES TO SUIT PARTITION TO STRUCTURE RELATIONSHIPS.
- REFER TO LIFE SAFETY PLANS FOR LOCATION OF FIRE RATED INTERIOR WALLS. USE TYPE "X" GYPSUM BOARD FOR ALL FIRE RATED PARTITIONS.
- NON-RATED FIRE SEPARATIONS: EXTEND ENTIRE ASSEMBLY TO UPS OF FLOOR / ROOF DECK, SEAL PERIMETER AND ALL PENETRATIONS.
- PROVIDE CONTINUOUS FIRESTOP SEALANT AT ALL JUNCTIONS BETWEEN RATED PARTITIONS, BULKHEADS, AND ALL OTHER BUILDING ASSEMBLIES.
- REFER TO THE PARTITION TYPE LEGEND TO IDENTIFY ACOUSTIC PARTITIONS NOTED WITH STC RATINGS. TOP-OF-WALL CLOSURES FOR THESE PARTITIONS INCLUDE ACOUSTIC INSULATION, VERIFY AND CORROBORATE THE PLACEMENT OF STRUCTURAL ELEMENTS (BEAMS, JOISTS, AND BRACES) AMONG ALL DISCIPLINES.
- PROVIDE SPRAY APPLIED FIREPROOFING TO PROTECT ALL HORIZONTAL STRUCTURAL ELEMENTS SUPPORTING LEVEL 2 FLOOR ASSEMBLIES TO ACHIEVE A FIRE RESISTANCE RATING, UNLESS NOTED OTHERWISE. REFER TO LIFE SAFETY PLANS FOR LOCATIONS AND RATINGS.
- ENSURE THE INTEGRITY OF THE SPECIFIED FIRE RESISTANCE RATING AT JUNCTIONS / INTERSECTIONS OF ALL PARTITIONS WITH A FIRE RESISTANCE RATING. PROVIDE FIRESTOPPING MATERIAL AT JUNCTIONS AS REQUIRED.
- WHERE WATER RESISTANT GYPSUM BOARD IS REQUIRED, ILC NUMBERS OR CAN ENGINEERING JUDGMENTS MUST BE PROVIDED FOR REVIEW, PER THE PROJECT SPECIFICATIONS.
- INSTALL WATER RESISTANT GYPSUM BOARD THROUGHOUT ON ALL METAL STUD PARTITIONS IN WASHROOMS, SHOWERS, AND JANITOR'S CLOSETS.
- ALIGN WALL SURFACES AT ALL JUNCTIONS BETWEEN GYPSUM WALL PARTITIONS AND ALL OTHER WALL ASSEMBLIES. ALIGN SURFACES ON CORRIDOR, ROOM, OR LOBBY SIZE AS PER THE CONTRACT DOCUMENTS. CONSULT WITH ARCHITECT PRIOR TO INSTALLATION IN EVENT OF DISCREPANCY.
- PROVIDE ACOUSTIC CLOSURES AT ALL JOINTS, JUNCTIONS AND PENETRATIONS, INCLUDING MECHANICAL AND ELECTRICAL, TO WALL ASSEMBLIES WITH STC RATING (WITH SOUND ATTENUATION INSULATION IN CAVITIES).
- METAL STUD PARTITIONS: INSTALL CONCEALED SOLID WOOD BLOCKING FOR ANCHORAGE OF GUARD RAILS, RECESSED OR SEMI-RECESSED WALL MOUNTED EQUIPMENT, FIXTURES, WHITE BOARDS, MILLWORK AND WASHROOM ACCESSORIES.
- WALL TAGS/NOTES WITHIN WALL, UNLESS NOTED OTHERWISE, SHALL BE ABOVE AND BELOW DOORS (WHERE APPLICABLE), WINDOWS, LOUVERS, GLAZED SCREENS, CURTAINWALL AND ALL TRIMMED ELEMENTS WITHIN WALL.
- PROVIDE GYPSUM BOARD CONTROL JOINTS AT ALL GYPSUM ASSEMBLIES PER SPECIFICATIONS.
- ALIGN MASONRY AND GYPSUM BOARD PARTITION JOINTS VERTICALLY.
- MECHANICAL AND ELECTRICAL ELEMENTS SHOWN ON ARCHITECTURAL PLANS ARE FOR COORDINATION PURPOSES ONLY. REFER TO CONTRACT DOCUMENTS PER EACH DISCIPLINE FOR SPECIFICATIONS AND EXACT LOCATIONS. IN EVENT OF DISCREPANCY, CONTACT ARCHITECT PRIOR TO INSTALLATION.
- ALL LOOSE FURNISHINGS INDICATED ARE N.I.C. (NOT IN CONTRACT).
- OVERHEAD DOORS TO EMPLOY MAXIMUM LIFT WITHIN HEADROOM AVAILABLE, UNLESS OTHERWISE NOTED. PROVIDE 4 BOLLARDS PER OVERHEAD DOOR, 2 INSIDE AND 2 OUTSIDE.
- AT ALL LOCATIONS WHERE FLOOR SLOPES TO DRAIN ARE INDICATED, DRAINS SHALL BE LOCATED AT ELEVATION -25mm.
- ALL SHIP EQUIPMENT INDICATED EXCLUDING DUST COLLECTOR ARE N.I.C. (NOT IN CONTRACT).
- ALL MECHANICAL CHASES ARE TO BE WALL TYPE P16 EXCEPT NOTED OTHERWISE.
- ALL EXPOSED BLOCK EDGES TO BE BULLNOSE BLOCK UNLESS OTHERWISE NOTED.
- FOR GROUT FILLING AND REINFORCEMENT DETAILS OF CONCRETE BLOCK WALLS, REFER TO STRUCTURAL DRAWINGS.
- PROVIDE AND INSTALL EXPANSION JOINT COVER AT FLOORS, INTERIOR PARTITIONS AND GYPSUM BOARD CEILING WHERE APPLICABLE. COLOR TO MATCH ADJACENT FINISHED SURFACES.
- PROVIDE REQUIRED FIRE PROTECTION TO ALL COLUMNS AT LEVEL 1 AND AS INDICATED ON THE FLOOR PLANS. MINIMUM FIRE PROTECTION OF 1H AS PRESCRIBED BY CBC 200.
- BLOCK WALL START CORNERS ARE IDENTIFIED ON THE PLAN. INFORM THE ARCHITECT BEFORE CHANGING ANY START CORNER.
- REFER TO PARTIAL PLANS AND/OR BLOW-UPS FOR MORE GENERAL ANNOTATION AND DIMENSIONS.

ASSEMBLY TYPE NOTES

- DIMENSION LINES ARE TAKEN FROM GRIDLINES, FACE OF STUDS, AND FACE OF BLOCK WALLS, UNLESS OTHERWISE NOTED.
- REFER TO LIFE SAFETY PLANS FOR LOCATION AND RATING OF FIRE RATED WALLS. USE FIRE-RATED GYPSUM BOARD FOR ALL FIRE RATED WALLS.
- IN ALL CORRIDORS WITH EXPOSED GYPSUM WALL BOARD ASSEMBLY (NOT REQUIRED BEHIND LOCKERS), INSTALL ABUSE-RESISTANT TYPE X GYPSUM BOARD FROM TOP OF SLAB TO 2400mm AFF ON CORRIDOR SIDE. COMPLETE ASSEMBLY ABOVE 2400mm AFF WITH TYPE X CWB OF EQUAL THICKNESS TO UNDERSIDE OF SLAB.
- INSTALL ABUSE-RESISTANT GYPSUM BOARD ON ALL GYPSUM BOARD CLAD COLUMNS.
- REFER TO ROOM FRESH SCHEDULE FOR FINISHES OF WALLS AND FLOORS.
- INSTALL WATER RESISTANT GYPSUM BOARD THROUGHOUT ON ALL METAL STUD PARTITIONS IN WASHROOMS, SHOWERS, AND JANITOR'S CLOSETS.
- FOR GROUT FILLING AND REINFORCEMENT DETAILS OF CONCRETE BLOCK WALLS, REFER TO STRUCTURAL DRAWINGS.
- ALL EXPOSED BLOCK EDGES TO BE BULLNOSE BLOCK UNLESS OTHERWISE NOTED.
- ALL MECHANICAL CHASES ARE TO BE WALL TYPE P16 EXCEPT NOTED OTHERWISE.
- PROVIDE 125mm METAL STUDS AT RECESSED FIRE EXTINGUISHER CABINETS UNLESS NOTED OTHERWISE.
- INSTALL BATT INSULATION IN ACOUSTIC PARTITIONS ON THE OPPOSITE SIDE OF PLUMBING PENETRATIONS AND ON THE OPPOSITE SIDE OF ELECTRICAL PENETRATION WHERE APPLICABLE, UNLESS NOTED OTHERWISE.
- PROVIDE 19mm THICK PLYWOOD BACKING BETWEEN METAL STUDS BEHIND SMART BOARDS, TELEVISIONS, WHITE BOARDS AND TACKBOARDS AND INSTALLED IN THE SAME ORIENTATION AS THE EQUIPMENT. EXACT LOCATION TO BE CONFIRMED ON SITE WITH THE OWNER.

EXTERIOR WALL ASSEMBLIES

W1A	90mm MASONRY 25mm AIR SPACE 125mm (2 X 75mm) SEMI-RIGID INSULATION (R24 MIN.) SELF ADHERED AIR/VAPOUR BARRIER 16mm EXTERIOR SHEATHING 125mm STEEL STUDS @ 400mm o.c. SEE SPECIFICATIONS) 50mm SEMI-RIGID ROCK WOOL INSULATION (MAX R8) 16mm GYPSUM BOARD
W1B	90mm MASONRY 25mm AIR SPACE 125mm (2 X 75mm) SEMI-RIGID INSULATION (R24 MIN.) SELF ADHERED AIR/VAPOUR BARRIER 16mm EXTERIOR SHEATHING 203mm STEEL STUDS @ 400mm o.c. SEE SPECIFICATIONS) 50mm SEMI-RIGID ROCK WOOL INSULATION (MAX R8) 16mm GYPSUM BOARD
W2A	90mm MASONRY 25mm AIR SPACE 125mm (2 X 75mm) SEMI-RIGID INSULATION (R24 MIN.) SELF ADHERED AIR/VAPOUR BARRIER 16mm EXTERIOR SHEATHING 125mm STEEL STUDS @ 400mm o.c. SEE SPECIFICATIONS) 50mm SEMI-RIGID ROCK WOOL INSULATION (MAX R8) 16mm GYPSUM BOARD 50mm CONCRETE MASONRY BLOCK
W2B	90mm MASONRY 25mm AIR SPACE 125mm (2 X 75mm) SEMI-RIGID INSULATION (R24 MIN.) SELF ADHERED AIR/VAPOUR BARRIER 16mm EXTERIOR SHEATHING 125mm STEEL STUDS @ 400mm o.c. SEE SPECIFICATIONS) 50mm SEMI-RIGID ROCK WOOL INSULATION (MAX R8) 16mm GYPSUM BOARD 50mm CONCRETE MASONRY BLOCK
W3A	ALUMINUM COMPOSITE PANEL SYSTEM 25mm 16ga. VENTED Z-GIRTS SPACED AS REQUIRED BY ACM SYSTEM 125mm ADJUSTABLE THERMAL CLIPS @ 400mm MAX. VERT. & 400mm HORIZ. o.c. 125mm (2 X 75mm) SEMI-RIGID INSULATION (R24 MIN.) SELF ADHERED AIR/VAPOUR BARRIER 16mm EXTERIOR SHEATHING 125mm STEEL STUDS @ 400mm o.c. SEMI-RIGID ROCK WOOL INSULATION (R8) 16mm GYPSUM BOARD
W3B	ALUMINUM COMPOSITE PANEL SYSTEM 25mm 16ga. VENTED Z-GIRTS SPACED AS REQUIRED BY ACM SYSTEM 125mm ADJUSTABLE THERMAL CLIPS @ 400mm MAX. VERT. & 400mm HORIZ. o.c. 125mm (2 X 75mm) SEMI-RIGID INSULATION (R24 MIN.) SELF ADHERED AIR/VAPOUR BARRIER 16mm EXTERIOR SHEATHING 125mm STEEL STUDS @ 400mm o.c. SEMI-RIGID ROCK WOOL INSULATION (R8) 16mm GYPSUM BOARD 50mm CONCRETE MASONRY BLOCK
W4A	ALUMINUM COMPOSITE PANEL SYSTEM 25mm 16ga. VENTED Z-GIRTS SPACED AS REQUIRED BY ACM SYSTEM 125mm ADJUSTABLE THERMAL CLIPS @ 400mm MAX. VERT. & 400mm HORIZ. o.c. 125mm (2 X 75mm) SEMI-RIGID INSULATION (R24 MIN.) SELF ADHERED AIR/VAPOUR BARRIER 16mm EXTERIOR SHEATHING 125mm STEEL STUDS @ 400mm o.c. SEMI-RIGID ROCK WOOL INSULATION (R8) 16mm GYPSUM BOARD
W4B	38mm PREFINISHED VERTICAL METAL SIDING, DUTCH SEAM CW 3mm THERMAL TAPE 25mm 16ga. HORIZ. VENTED Z-GIRTS @ 400mm o.c. MAX. 125mm ADJUSTABLE THERMAL CLIPS @ 400mm MAX. VERT. & 400mm HORIZ. o.c. 125mm (2 X 75mm) SEMI-RIGID INSULATION (R24 MIN.) SELF ADHERED AIR/VAPOUR BARRIER 16mm EXTERIOR SHEATHING 125mm STEEL STUDS @ 400mm o.c. SEMI-RIGID ROCK WOOL INSULATION (R8) 16mm GYPSUM BOARD
W5A	38mm PREFINISHED VERTICAL METAL SIDING, DUTCH SEAM CW 3mm THERMAL TAPE 25mm 16ga. HORIZ. VENTED Z-GIRTS @ 400mm o.c. MAX. 125mm ADJUSTABLE THERMAL CLIPS @ 400mm MAX. VERT. & 400mm HORIZ. o.c. 125mm (2 X 75mm) SEMI-RIGID INSULATION (R24 MIN.) SELF ADHERED AIR/VAPOUR BARRIER 16mm EXTERIOR SHEATHING 125mm STEEL STUDS @ 400mm o.c. SEMI-RIGID ROCK WOOL INSULATION (R8) 16mm GYPSUM BOARD
W5B	38mm PREFINISHED VERTICAL METAL SIDING, DUTCH SEAM CW 3mm THERMAL TAPE 25mm 16ga. HORIZ. VENTED Z-GIRTS @ 400mm o.c. MAX. 125mm ADJUSTABLE THERMAL CLIPS @ 400mm MAX. VERT. & 400mm HORIZ. o.c. 125mm (2 X 75mm) SEMI-RIGID INSULATION (R24 MIN.) SELF ADHERED AIR/VAPOUR BARRIER 16mm EXTERIOR SHEATHING 125mm STEEL STUDS @ 400mm o.c. SEMI-RIGID ROCK WOOL INSULATION (R8) 16mm GYPSUM BOARD
W6A	90mm MASONRY 25mm AIR SPACE 125mm (2 X 75mm) SEMI-RIGID INSULATION (R24 MIN.) SELF ADHERED AIR/VAPOUR BARRIER 16mm EXTERIOR SHEATHING 125mm STEEL STUDS @ 400mm o.c. SEE SPECIFICATIONS) 50mm SEMI-RIGID ROCK WOOL INSULATION (MAX R8) 16mm GYPSUM BOARD
W6B	90mm MASONRY 25mm AIR SPACE 125mm (2 X 75mm) SEMI-RIGID INSULATION (R24 MIN.) SELF ADHERED AIR/VAPOUR BARRIER 16mm EXTERIOR SHEATHING 125mm STEEL STUDS @ 400mm o.c. SEE SPECIFICATIONS) 50mm SEMI-RIGID ROCK WOOL INSULATION (MAX R8) 16mm GYPSUM BOARD
W7A	90mm MASONRY 25mm AIR SPACE 125mm (2 X 75mm) SEMI-RIGID INSULATION (R24 MIN.) SELF ADHERED AIR/VAPOUR BARRIER 16mm EXTERIOR SHEATHING 125mm STEEL STUDS @ 400mm o.c. SEE SPECIFICATIONS) 50mm SEMI-RIGID ROCK WOOL INSULATION (MAX R8) 16mm GYPSUM BOARD
W7B	90mm MASONRY 25mm AIR SPACE 125mm (2 X 75mm) SEMI-RIGID INSULATION (R24 MIN.) SELF ADHERED AIR/VAPOUR BARRIER 16mm EXTERIOR SHEATHING 125mm STEEL STUDS @ 400mm o.c. SEE SPECIFICATIONS) 50mm SEMI-RIGID ROCK WOOL INSULATION (MAX R8) 16mm GYPSUM BOARD

8	September 11, 2025	Revised per city comments	CJ
9	September 11, 2025	Issued with Addendum #7	CJ
7	July 31st 2025	Issued for Tender	CJ
6	July 10th 2025	Issued for Building Permit	CJ
5	July 10th 2025	Issued for 99% Client Review	CJ
4	June 19th 2025	Issued for Site Plan Control R1	CJ
3	May 29th 2025	Issued for 68% Client Review	CJ
2	April 4th 2025	Issued for Site Plan Control	CJ
1	March 14th 2025	Issued for 33% Client Review	CJ

no.	date	revision / issue	by

consultant	
professional stamp	

northpoint	
project title	

NEW CATHOLIC HIGH SCHOOL RIVERSIDE SOUTH

Mantidale Ontario

drawing title

GROUND FLOOR - OVERALL

date	MAY 28 2025	job no.	
scale	As indicated	240097	
drawn	JG	drawing no.	A101
approved	CJ/DP/PR	job date	01/09/25
plan number	#19337	file no.	D07-12-25-0045

1: DO NOT SCALE FROM THIS DRAWING.
2: CONTRACTOR TO VERIFY ALL DIMENSIONS AND NOTIFY THE ARCHITECT OF ANY DISCREPANCIES BEFORE WORK COMMENCES.
3: THE DRAWING IS TO BE READ IN CONJUNCTION WITH THE FOLLOWING DRAWINGS: STRUCTURAL, MECHANICAL, ELECTRICAL.

GENERAL NOTES

- DO NOT SCALE THIS DRAWING.
- ALL DIMENSIONS ARE IN MILLIMETERS EXCEPT GRADE, FLOOR ELEVATIONS AND PROPERTY LINE DIMENSIONS (SHOWN IN METERS).
- ALL DIMENSIONS ARE TO FACE OF METAL STUDS, CONCRETE BLOCK, CONCRETE, OR GRIDLINE, UNLESS NOTED OTHERWISE.
- EXTEND ALL INTERIOR PARTITIONS TO UNDERSIDE OF STEEL DECK, UNLESS OTHERWISE NOTED.
- REFER TO TYPICAL TOP OF WALL DETAILS FOR CLOSURES TO BUT PARTITION TO STRUCTURE RELATIONSHIPS.
- REFER TO LIFE SAFETY PLANS FOR LOCATION OF FIRE RATED INTERIOR WALLS. USE TYPE "X" GYPSUM BOARD FOR ALL FIRE RATED PARTITIONS.
- NON-RATED FIRE SEPARATIONS: EXTEND ENTIRE ASSEMBLY TO UPS OF FLOOR / ROOF DECK, SEAL PERIMETER AND ALL PENETRATIONS.
- PROVIDE CONTINUOUS FIRESTOP SEALANT AT ALL JUNCTIONS BETWEEN RATED PARTITIONS, BULKHEADS, AND ALL OTHER BUILDING ASSEMBLIES.
- REFER TO THE PARTITION TYPE LEGEND TO IDENTIFY ACOUSTIC PARTITIONS NOTED WITH STC RATINGS. TOP-OF-WALL CLOSURES FOR THESE PARTITIONS INCLUDE ACOUSTIC INSULATION, VERIFY AND CORROBORATE THE ASSEMBLY OF STRUCTURAL ELEMENTS (BEAMS, JOISTS, AND BRACES) AMONG ALL DISCIPLINES.
- PROVIDE SPRAY APPLIED FIBREGLASS TO PROTECT ALL HORIZONTAL STRUCTURAL ELEMENTS SUPPORTING LEVEL 2 FLOOR ASSEMBLY TO ACHIEVE A FIRE RESISTANCE RATING, UNLESS NOTED OTHERWISE. REFER TO LIFE SAFETY PLANS FOR LOCATIONS AND RATINGS.
- INSURE THE INTEGRITY OF THE SPECIFIED FIRE RESISTANCE RATING AT JUNCTIONS / INTERSECTIONS OF ALL PARTITIONS WITH A FIRE RESISTANCE RATING. PROVIDE FIRESTOP MATERIAL AT JUNCTIONS AS REQUIRED.
- WHERE RATED DEFLECTION ASSEMBLIES ARE REQUIRED, ULC NUMBERS OR CAN ENGINEERING JUDGEMENTS MUST BE PROVIDED FOR REVIEW, PER THE PROJECT SPECIFICATIONS.
- INSTALL WATER RESISTANT GYPSUM BOARD THROUGHOUT ON ALL METAL STUD PARTITIONS IN WASHROOMS, SHOWERS, AND JANITOR'S CLOSETS.
- ALIGN WALL SURFACES AT ALL JUNCTIONS BETWEEN GYPSUM WALL PARTITIONS AND ALL OTHER WALL ASSEMBLIES. ALIGN SURFACES ON CORRIDOR, ROOM, OR LOBBY SIDE AS PER THE CONTRACT DOCUMENTS. CONSULT WITH ARCHITECT PRIOR TO INSTALLATION IN EVENT OF DISCREPANCY.
- PROVIDE ACOUSTIC CLOSURES AT ALL JOINTS, JUNCTIONS AND PENETRATIONS, INCLUDING MECHANICAL AND ELECTRICAL, TO WALL ASSEMBLIES WITH STC RATING (WITH SOUND ATTENUATION INSULATION IN CAVITIES).
- METAL STUD PARTITIONS: INSTALL CONCEALED SOLID WOOD BLOCKING FOR ANCHORAGE OF GUARD RAILS, RECESSED OR SEMI-RECESSED WALL MOUNTED EQUIPMENT, FIXTURES, WHITE BOARDS, MILLWORK AND WASHROOM ACCESSORIES.
- WALLS: TAGGED WITH TYPE INCLUDING WALL PORTIONS ON ALL SIDES OF ABOVE AND BELOW DOORS (WHERE APPLICABLE), WINDOWS, LOUVERS, GLAZED SCREENS, CURTAINWALL AND ALL TRIMMED ELEMENTS WITHIN WALL. UNLESS NOTED OTHERWISE.
- PROVIDE GYPSUM BOARD CONTROL JOINTS AT ALL GYPSUM ASSEMBLY PER SPECIFICATIONS.
- ON CORRIDOR SIDE, COMPLETE ASSEMBLY ABOVE AND/OR AFF WITH TYPE X GYPSUM BOARD OF EQUAL THICKNESS TO UNDERSIDE OF SLAB.
- INSTALL ABUSE-RESISTANT GYPSUM BOARD ON ALL GYPSUM BOARD CLAD COLUMNS.
- REFER TO ROOM FINISH SCHEDULE FOR FINISHES OF WALLS AND FLOORS.
- INSTALL WATER RESISTANT GYPSUM BOARD THROUGHOUT ON ALL METAL STUD PARTITIONS IN WASHROOMS, SHOWERS, AND JANITOR'S CLOSETS.
- FOR GROUT FILLING AND REINFORCEMENT DETAILS OF CONCRETE BLOCK WALLS. REFER TO STRUCTURAL DRAWINGS.
- ALL EXPOSED BLOCK EDGES TO BE BULLNOSE BLOCK UNLESS OTHERWISE NOTED.
- ALL MECHANICAL CHASES ARE TO BE WALL TYPE P15 EXCEPT NOTED OTHERWISE.
- PROVIDE 12mm METAL STUDS AT RECESSED BULLNOSE CANNOTS UNLESS NOTED OTHERWISE.
- INSTALL BATT INSULATION IN ACOUSTIC PARTITIONS ON THE OPPOSITE SIDE OF PLUMBING PENETRATIONS AND ON THE OPPOSITE SIDE OF ELECTRICAL PENETRATION WHERE APPLICABLE, UNLESS NOTED OTHERWISE.
- PROVIDE A 610x1220mm 19mm THICK PLYWOOD BACKING BEHIND METAL STUDS BEHIND SMART BOARDS, TELEVISIONS, WHITE BOARDS AND TAGBOARDS INSTALLED IN THE SAME ORIENTATION AS THE EQUIPMENT. EXACT LOCATION TO BE CONFIRMED ON SITE WITH THE OWNER.

ASSEMBLY TYPE NOTES

- DIMENSION LINES ARE TAKEN FROM GRIDLINES, FACE OF STUDS, AND FACE OF BLOCK WALLS, UNLESS OTHERWISE NOTED.
- REFER TO LIFE SAFETY PLANS FOR LOCATION AND RATING OF FIRE RATED WALLS. USE FIRE-RATED GYPSUM BOARD FOR ALL FIRE RATED WALLS.
- IN ALL CORRIDORS WITH EXPOSED GYPSUM WALL BOARD ASSEMBLY NOT REQUIRED (BUT REQUIRED LOCKERS), INSTALL ABUSE-RESISTANT TYPE X GYPSUM BOARD FROM TOP OF SLAB TO 2400mm AFF ON CORRIDOR SIDE. COMPLETE ASSEMBLY ABOVE AND/OR AFF WITH TYPE X GYPSUM BOARD OF EQUAL THICKNESS TO UNDERSIDE OF SLAB.
- INSTALL ABUSE-RESISTANT GYPSUM BOARD ON ALL GYPSUM BOARD CLAD COLUMNS.
- REFER TO ROOM FINISH SCHEDULE FOR FINISHES OF WALLS AND FLOORS.
- INSTALL WATER RESISTANT GYPSUM BOARD THROUGHOUT ON ALL METAL STUD PARTITIONS IN WASHROOMS, SHOWERS, AND JANITOR'S CLOSETS.
- FOR GROUT FILLING AND REINFORCEMENT DETAILS OF CONCRETE BLOCK WALLS. REFER TO STRUCTURAL DRAWINGS.
- ALL EXPOSED BLOCK EDGES TO BE BULLNOSE BLOCK UNLESS OTHERWISE NOTED.
- ALL MECHANICAL CHASES ARE TO BE WALL TYPE P15 EXCEPT NOTED OTHERWISE.
- PROVIDE 12mm METAL STUDS AT RECESSED BULLNOSE CANNOTS UNLESS NOTED OTHERWISE.
- INSTALL BATT INSULATION IN ACOUSTIC PARTITIONS ON THE OPPOSITE SIDE OF PLUMBING PENETRATIONS AND ON THE OPPOSITE SIDE OF ELECTRICAL PENETRATION WHERE APPLICABLE, UNLESS NOTED OTHERWISE.
- PROVIDE A 610x1220mm 19mm THICK PLYWOOD BACKING BEHIND METAL STUDS BEHIND SMART BOARDS, TELEVISIONS, WHITE BOARDS AND TAGBOARDS INSTALLED IN THE SAME ORIENTATION AS THE EQUIPMENT. EXACT LOCATION TO BE CONFIRMED ON SITE WITH THE OWNER.

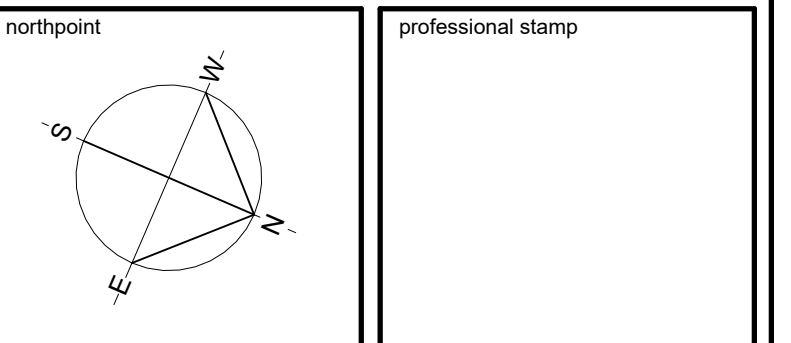
EXTERIOR WALL ASSEMBLIES

W1A	90mm MASONRY 25mm AIR SPACE 152mm (2 X 76mm) SEMI-RIGID INSULATION (R24 MIN.) SELF ADHERED AIRVAPOUR BARRIER 16mm EXTERIOR SHEATHING 152mm STEEL STUDS (SPACING AND SIZE ACCORDING TO CALCULATIONS. SEE SPECIFICATIONS) W/ 50mm SEMI-RIGID ROCK WOOL INSULATION (MAX R8) 16mm GYPSUM BOARD
W1B	90mm MASONRY 25mm AIR SPACE 152mm (2 X 76mm) SEMI-RIGID INSULATION (R24 MIN.) SELF ADHERED AIRVAPOUR BARRIER 16mm EXTERIOR SHEATHING 152mm STEEL STUDS (SPACING AND SIZE ACCORDING TO CALCULATIONS. SEE SPECIFICATIONS) W/ 50mm SEMI-RIGID ROCK WOOL INSULATION (MAX R8) 16mm GYPSUM BOARD
W2A	90mm MASONRY 25mm AIR SPACE 152mm (2 X 76mm) SEMI-RIGID INSULATION (R24 MIN.) SELF ADHERED AIRVAPOUR BARRIER 16mm EXTERIOR SHEATHING 152mm STEEL STUDS (SPACING AND SIZE ACCORDING TO CALCULATIONS. SEE SPECIFICATIONS) W/ 50mm SEMI-RIGID ROCK WOOL INSULATION (MAX R8) 16mm GYPSUM BOARD
W2B	90mm MASONRY 25mm AIR SPACE 152mm (2 X 76mm) SEMI-RIGID INSULATION (R24 MIN.) SELF ADHERED AIRVAPOUR BARRIER 16mm EXTERIOR SHEATHING 152mm STEEL STUDS (SPACING AND SIZE ACCORDING TO CALCULATIONS. SEE SPECIFICATIONS) W/ 50mm SEMI-RIGID ROCK WOOL INSULATION (MAX R8) 16mm GYPSUM BOARD
W3A	ALUMINUM COMPOSITE PANEL SYSTEM 25mm 16ga. VENTED Z-GIRTS SPACED AS REQUIRED BY ACM SYSTEM 152mm ADJUSTABLE THERMAL CLIPS @ 400mm MAX. VERT. & 400mm HORIZ. o.c. 152mm (2 X 76mm) SEMI-RIGID INSULATION (R24 MIN.) SELF ADHERED AIRVAPOUR BARRIER 16mm EXTERIOR SHEATHING 152mm STEEL STUDS @ 400mm o.c. SEMI-RIGID ROCK WOOL INSULATION (R8) 16mm GYPSUM BOARD
W3B	ALUMINUM COMPOSITE PANEL SYSTEM 25mm 16ga. VENTED Z-GIRTS SPACED AS REQUIRED BY ACM SYSTEM 152mm ADJUSTABLE THERMAL CLIPS @ 400mm MAX. VERT. & 400mm HORIZ. o.c. 152mm (2 X 76mm) SEMI-RIGID INSULATION (R24 MIN.) SELF ADHERED AIRVAPOUR BARRIER 16mm EXTERIOR SHEATHING 152mm STEEL STUDS @ 400mm o.c. SEMI-RIGID ROCK WOOL INSULATION (R8) 16mm GYPSUM BOARD
W4A	ALUMINUM COMPOSITE PANEL SYSTEM 25mm 16ga. VENTED Z-GIRTS SPACED AS REQUIRED BY ACM SYSTEM 152mm ADJUSTABLE THERMAL CLIPS @ 400mm MAX. VERT. & 400mm HORIZ. o.c. 152mm (2 X 76mm) SEMI-RIGID INSULATION (R24 MIN.) SELF ADHERED AIRVAPOUR BARRIER 16mm EXTERIOR SHEATHING 152mm STEEL STUDS @ 400mm o.c. SEMI-RIGID ROCK WOOL INSULATION (R8) 16mm GYPSUM BOARD
W4B	38mm PREFINISHED VERTICAL METAL SIDING, DUTCH SEAM C/W 3mm THERMAL TAPE 25mm 16ga. HORIZ. VENTED Z-GIRTS @ 400mm o.c. MAX. 152mm ADJUSTABLE THERMAL CLIPS @ 400mm MAX. VERT. & 400mm HORIZ. o.c. 152mm (2 X 76mm) SEMI-RIGID INSULATION (R24 MIN.) SELF ADHERED AIRVAPOUR BARRIER 16mm EXTERIOR SHEATHING 152mm STEEL STUDS @ 400mm o.c. SEMI-RIGID ROCK WOOL INSULATION (R8) 16mm GYPSUM BOARD
W5A	38mm PREFINISHED VERTICAL METAL SIDING, DUTCH SEAM C/W 3mm THERMAL TAPE 25mm 16ga. HORIZ. VENTED Z-GIRTS @ 400mm o.c. MAX. 152mm ADJUSTABLE THERMAL CLIPS @ 400mm MAX. VERT. & 400mm HORIZ. o.c. 152mm (2 X 76mm) SEMI-RIGID INSULATION (R24 MIN.) SELF ADHERED AIRVAPOUR BARRIER 16mm EXTERIOR SHEATHING 152mm STEEL STUDS @ 400mm o.c. SEMI-RIGID ROCK WOOL INSULATION (R8) 16mm GYPSUM BOARD
W5B	38mm PREFINISHED VERTICAL METAL SIDING, DUTCH SEAM C/W 3mm THERMAL TAPE 25mm 16ga. HORIZ. VENTED Z-GIRTS @ 400mm o.c. MAX. 152mm ADJUSTABLE THERMAL CLIPS @ 400mm MAX. VERT. & 400mm HORIZ. o.c. 152mm (2 X 76mm) SEMI-RIGID INSULATION (R24 MIN.) SELF ADHERED AIRVAPOUR BARRIER 16mm EXTERIOR SHEATHING 152mm STEEL STUDS @ 400mm o.c. SEMI-RIGID ROCK WOOL INSULATION (R8) 16mm GYPSUM BOARD
W6A	90mm MASONRY 25mm AIR SPACE 152mm (2 X 76mm) SEMI-RIGID INSULATION (R24 MIN.) SELF ADHERED AIRVAPOUR BARRIER 16mm EXTERIOR SHEATHING 152mm STEEL STUDS @ 400mm o.c. SEMI-RIGID ROCK WOOL INSULATION (R8) 16mm GYPSUM BOARD
W6B	90mm MASONRY 25mm AIR SPACE 152mm (2 X 76mm) SEMI-RIGID INSULATION (R24 MIN.) SELF ADHERED AIRVAPOUR BARRIER 16mm EXTERIOR SHEATHING 152mm STEEL STUDS @ 400mm o.c. SEMI-RIGID ROCK WOOL INSULATION (R8) 16mm GYPSUM BOARD

9	September 11, 2025	Revised per city comments	CJ
8	September 11, 2025	Issued with Addendum #7	CJ
7	July 31st 2025	Issued for Tender	CJ
6	July 31st 2025	Issued for Building Permit	CJ
5	July 31st 2025	Issued for 95% Client Review	CJ
4	June 19th 2025	Issued for Site Plan Control #1	CJ
3	May 29th 2025	Issued for 65% Client Review	CJ
2	April 4th 2025	Issued for Site Plan Control	CJ
1	March 14th 2025	Issued for 33% Client Review	CJ
no.	date	revision / issue	by

grc architects
A PROVENCHER ROY COMPANY
47 Clarence Street, Suite 401
Ottawa, Ontario K1N 9K1
T: 613-241-6203 F: 613-242-4190
info@grcarchitects.com www.grcarchitects.com

consultant:
northpoint:
professional stamp:



project title:
NEW CATHOLIC HIGH SCHOOL RIVERSIDE SOUTH

Mantidok Ontario

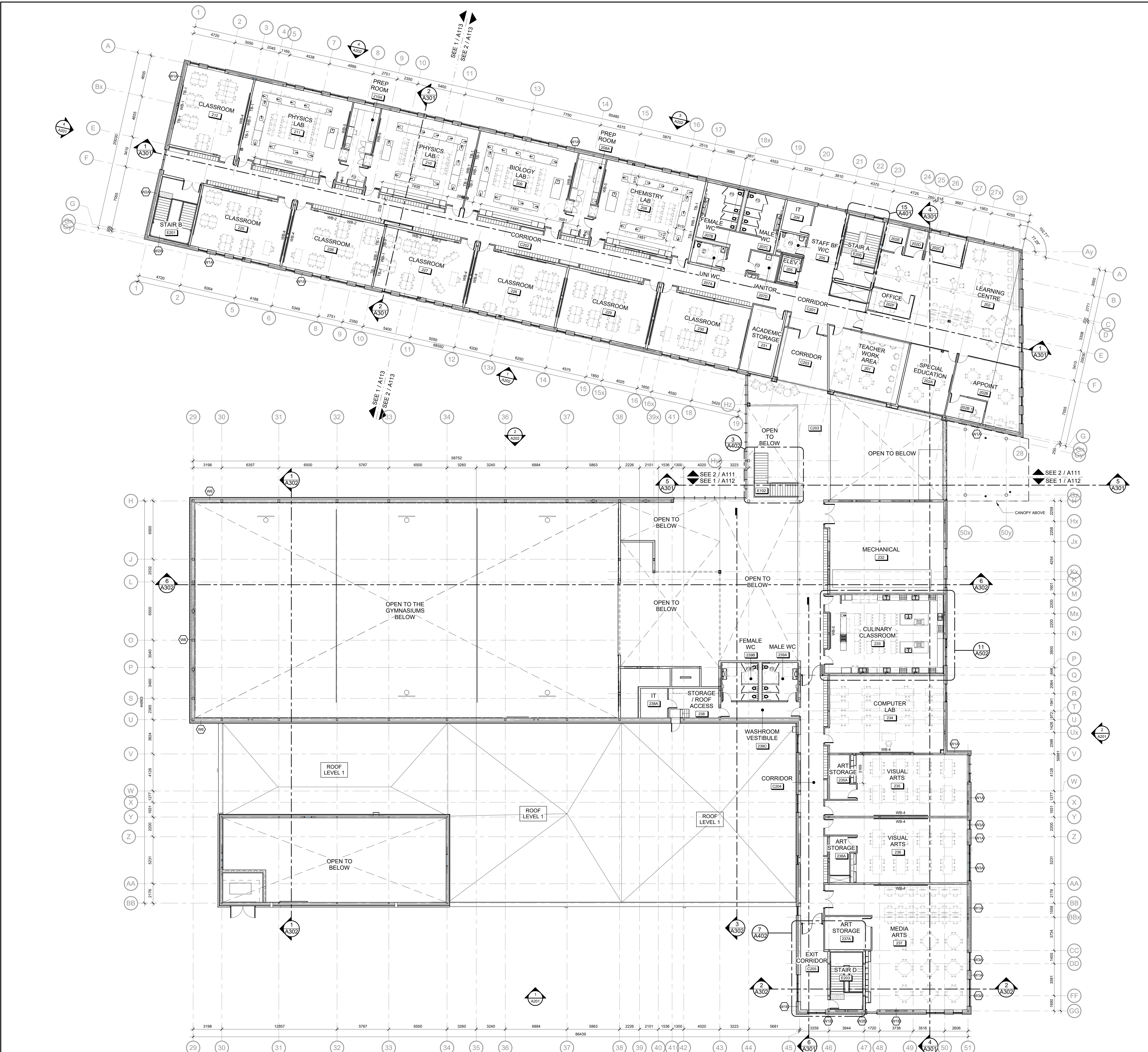
drawing title:
SECOND FLOOR - OVERALL

date	MAY 28 2025	job no.	
scale	As indicated	240097	
drawn	JG	drawing no.	A102
approved	CJ/DP/PR	plot date	01/09/25
plan number	#19337	file no.	D07-12-25-0045

1. DO NOT SCALE FROM THIS DRAWING.
2. CONTRACTOR TO VERIFY ALL DIMENSIONS AND NOTIFY THE ARCHITECT OF ANY DISCREPANCIES BEFORE WORK COMMENCES.
3. THE DRAWING IS TO BE READ IN CONJUNCTION WITH THE FOLLOWING DRAWINGS: STRUCTURAL, MECHANICAL, ELECTRICAL.

SECOND FLOOR PLAN - OVERALL

1 A102 1:150



Allison Hamlin
ALLISON HAMLIN
MANAGER, DEVELOPMENT REVIEW ALL WARDS
PLANNING, DEVELOPMENT & BUILDING SERVICES
DEPARTMENT, CITY OF OTTAWA

APPROVED
By Allison Hamlin at 4:20 pm, Sep 24, 2025

- GENERAL NOTES:**
- MECHANICAL AND ELECTRICAL EQUIPMENT IS SHOWN FOR COORDINATION PURPOSES ONLY. REFER TO CONTRACT DOCUMENTS FOR EACH DISCIPLINE FOR SPECIFICATIONS AND EXACT LOCATION.
 - COORDINATE WITH MECHANICAL DRAWINGS FOR LOCATION AND SIZE OF ALL OPENINGS THROUGH ROOF DECK.
 - FOR ROOF DETAILS REFER TO DRAWING A308.
- LEGEND**
- RD ROOF DRAIN IN 2400mm SLUMP (20mm DEPRESSION IN INSULATION)
 - 1m WIDE WALKWAY TRAFFIC MEMBRANE ON TOP OF ROOF ASSEMBLY - CONTRASTING COLOUR
 - ROOF LADDER
 - SC - # SCUPPER, REFER TO SHEET A305
 - EF - # EXHAUST FAN
 - FOU# RTU# ROOF TOP UNIT, MECHANICAL TO PROVIDE SUPPORT TYPE CONCRETE TOPPING TO BE PROVIDED BELOW ALL ROOF TOP UNITS (RTUs & FOU) AS INDICATED ON STRUCTURAL DRAWINGS.
 - SLOPED TOP INSULATION
 - # % SLOPE TO ROOF DRAIN, PERCENTAGES INDICATED ARE FROM HORIZONTAL PLANE.
 - 450x450x65 PRECAST CONCRETE PAVES
 - ROOF CRICKET

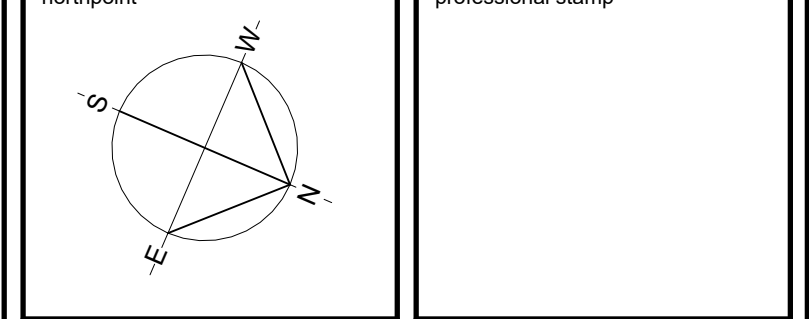
ROOF ASSEMBLIES

<p>EXTERIOR</p> <p>INTERIOR</p>	<p>MAIN ROOF - SLOPED, ROOF STRUCTURE</p> <p>2-PLY SBS MODIFIED BITUMEN ROOFING MEMBRANE 6mm INSULATION PROTECTION BOARD SLOPED POLYISOCYANURATE INSULATION CRICKETS TO ROOF DRAIN 16mm (2 LAYERS 84mm) POLYISOCYANURATE, STAGGERED ROOF INSULATION (R40) 13mm DECK SHEATHING BOARD STEEL DECK ON STRUCTURAL FRAMING (SEE STRUCTURAL)</p>
<p>EXTERIOR</p> <p>EXTERIOR</p>	<p>CANOPY ROOF</p> <p>2-PLY SBS MODIFIED BITUMEN ROOFING MEMBRANE 6mm INSULATION PROTECTION BOARD SLOPED POLYISOCYANURATE INSULATION CRICKETS TO SCUPPERS 13mm DECK SHEATHING BOARD STEEL DECK ON STRUCTURAL FRAMING (SEE STRUCTURAL)</p>
<p>EXTERIOR</p> <p>INTERIOR</p>	<p>FLAT ROOF STRUCTURE</p> <p>2-PLY SBS MODIFIED BITUMEN ROOFING MEMBRANE 3mm INSULATION PROTECTION BOARD SLOPED POLYISOCYANURATE INSULATION CRICKETS TO ROOF DRAIN 16mm (2 LAYERS 84mm) POLYISOCYANURATE, STAGGERED ROOF INSULATION (R40) 62mm CONCRETE TOPPING @ MECHANICAL UNIT, REFER TO ROOF PLAN FOR EXTENT AND MECHANICAL 13mm DECK SHEATHING BOARD STEEL DECK ON STRUCTURAL FRAMING (SEE STRUCTURAL)</p>

10	September 11, 2025	Revised per city comments	CJ
9	September 11, 2025	Issued with Addendum #7	CJ
8	August 21, 2025	Issued with Addendum #2	CJ
7	July 31st 2025	Issued for Tender	CJ
6	July 07th 2025	Issued for Building Permit	CJ
5	July 02nd 2025	Issued for 99% Client Review	CJ
4	June 19th 2025	Issued for Site Plan Control R1	CJ
3	May 29, 2025	Issued for 68% Client Review	CJ
2	April 4th 2025	Issued for Site Plan Control	CJ
1	March 14th 2025	Issued for 33% Client Review	CJ
no.	date	revision / issue	by

grc architects
A PROVENCHER ROY COMPANY
47 Clarence Street, Suite 401
Ottawa, Ontario K1N 1K1
t: 613-241-6203 f: 613-242-4180
info@grcarchitects.com www.grcarchitects.com

consultant

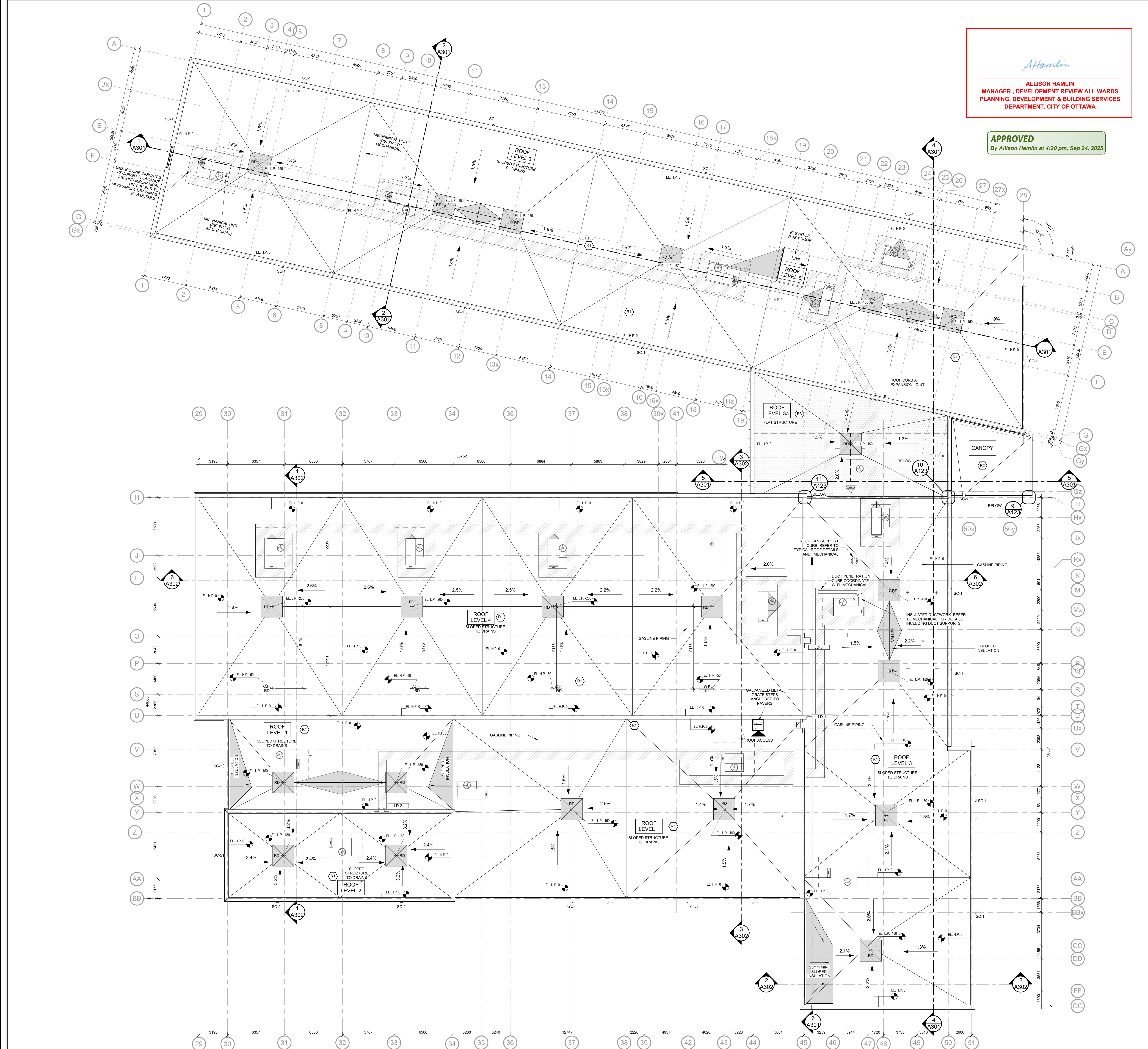


project title
NEW CATHOLIC HIGH SCHOOL RIVERSIDE SOUTH
Manitack
Ottawa

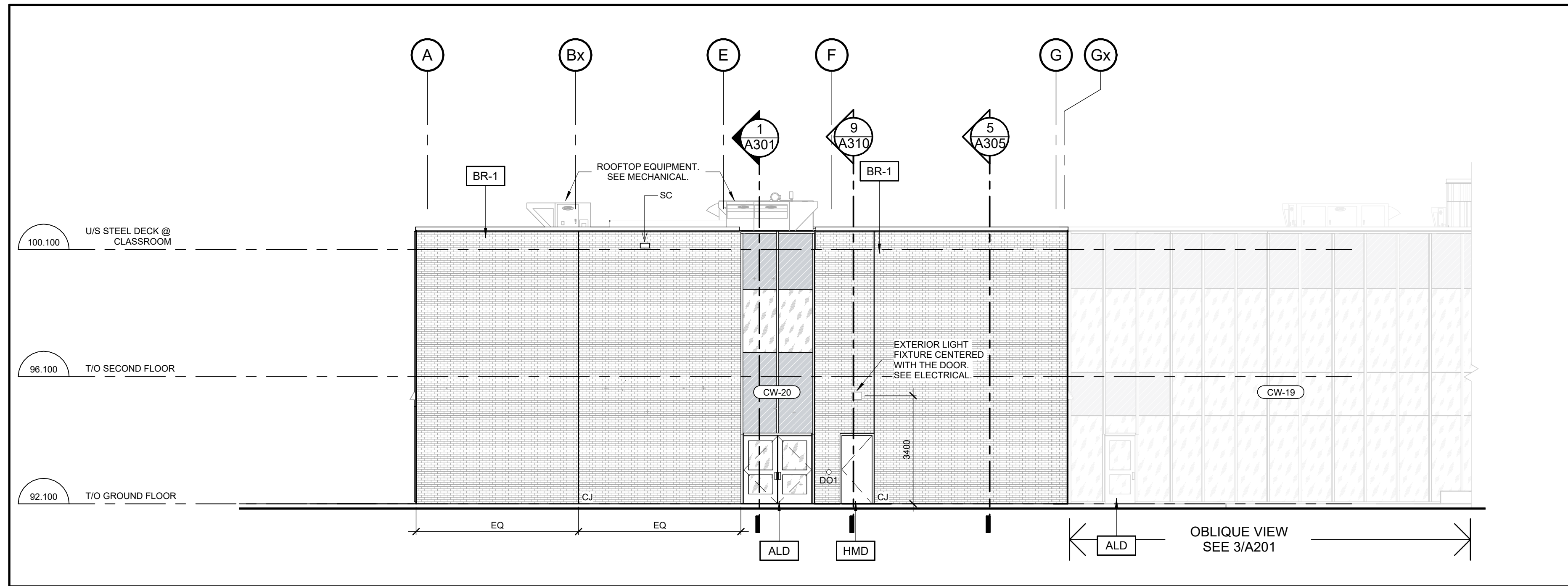
drawing title
ROOF PLAN - OVERALL

date	MAY 28 2025	job no.	
scale	As indicated		240097
drawn	JG	drawing no.	
approved	CJ/PP/PR		A103
plot date	03/19/13		
plan number	#19337	file no.	D07-12-25-0045

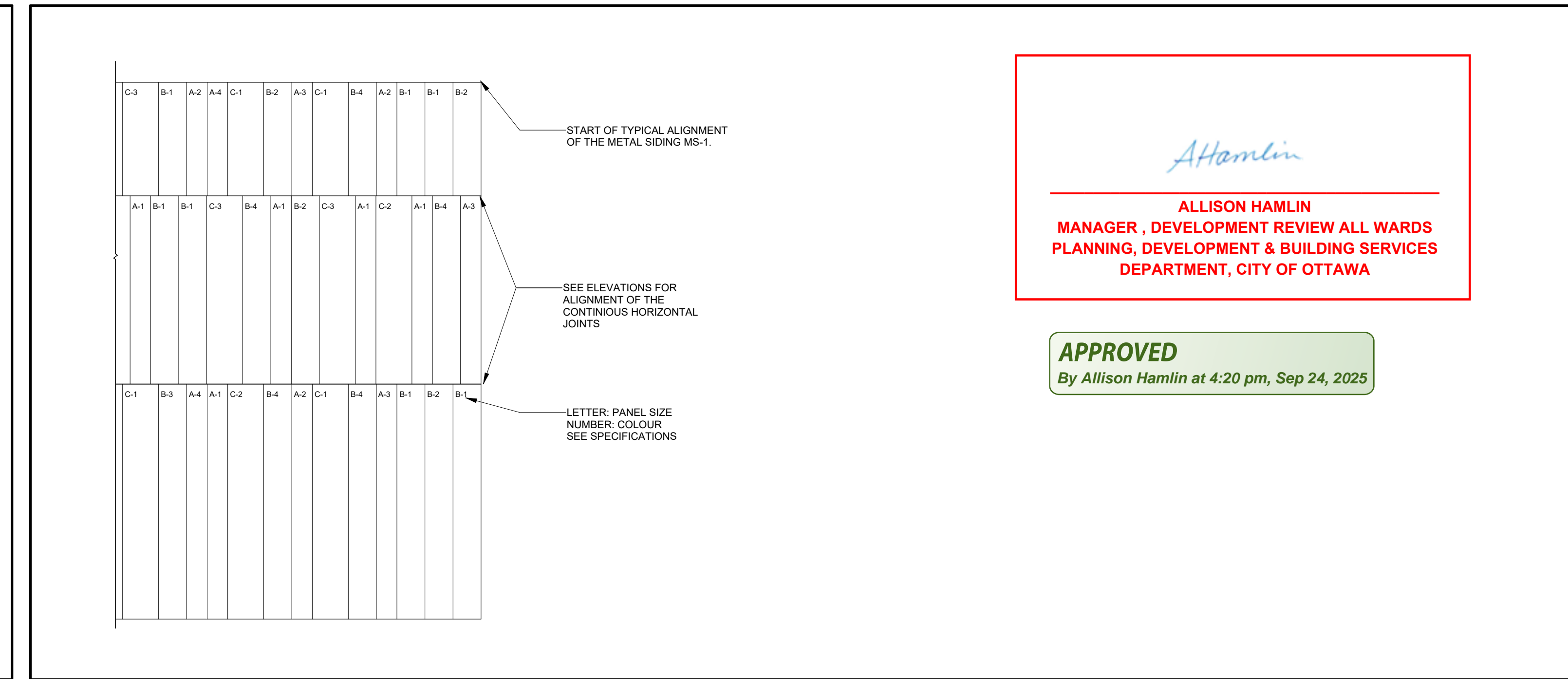
1. DO NOT SCALE FROM THIS DRAWING.
2. CONTRACTOR TO VERIFY ALL DIMENSIONS AND NOTIFY THE ARCHITECT OF ANY DISCREPANCIES BEFORE WORK COMMENCES.
3. THIS DRAWING TO BE READ IN CONJUNCTION WITH THE FOLLOWING DRAWINGS: STRUCTURAL, MECHANICAL, ELECTRICAL.



1 ROOF PLAN
A103 1:150



4 SOUTH ELEVATION - PARTIAL
A201 1:100

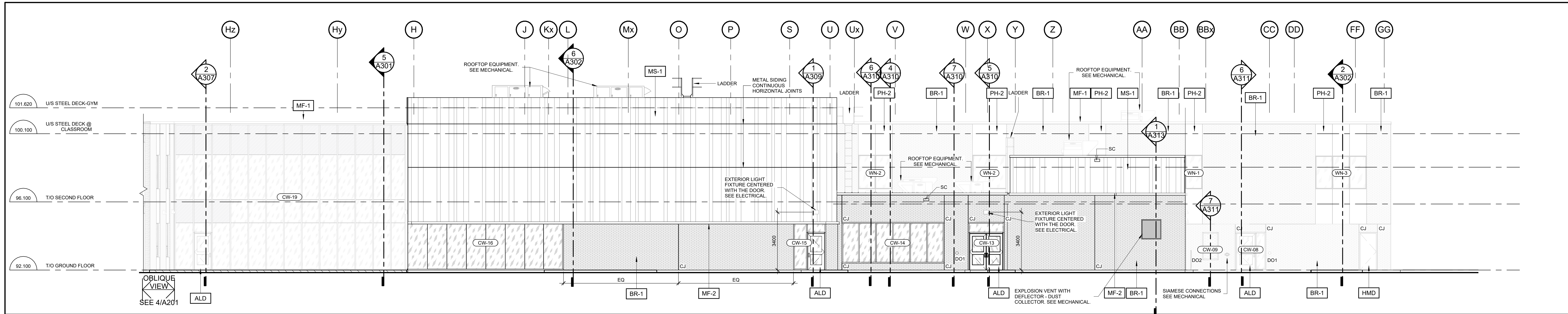


5 METAL SIDING PATTERN LAYOUT (TYP.)
A201 1:50

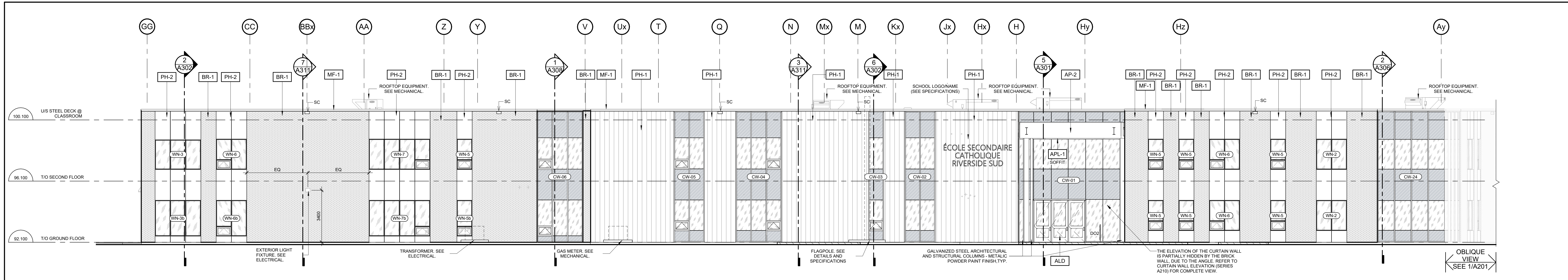
Allison Hamlin
ALLISON HAMLIN
MANAGER, DEVELOPMENT REVIEW ALL WARDS
PLANNING, DEVELOPMENT & BUILDING SERVICES
DEPARTMENT, CITY OF OTTAWA

APPROVED
By Allison Hamlin at 4:20 pm, Sep 24, 2025

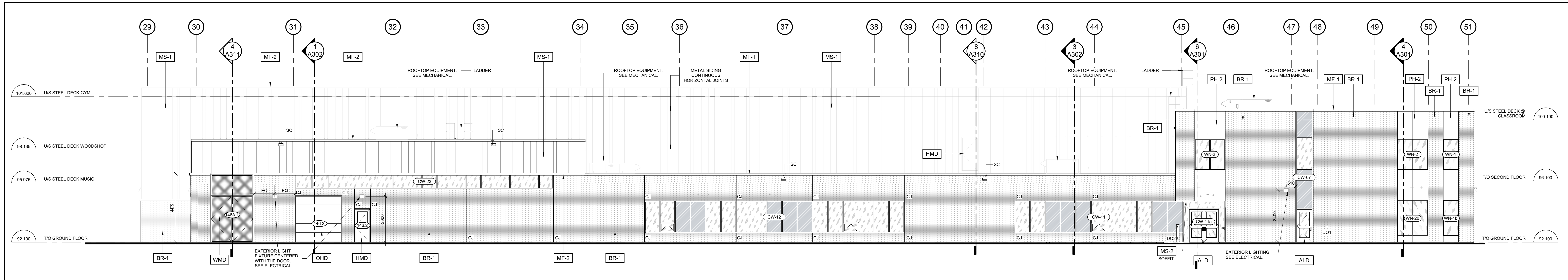
KEYNOTES LEGEND	
ALD	PREFINISHED ALUMINUM DOOR
AP-2	ALUMINUM COMPOSITE PANEL
APL-1	ALUMINUM PANEL, LINEAR
BR-1	BRICK TYPE 1
DO1	DOOR OPERATOR TYPE 1
DO2	DOOR OPERATOR TYPE 2
HMD	INSULATED HOLLOW METAL DOOR
MF-1	PREFINISHED METAL FLASHING TYPE 1
MF-2	PREFINISHED METAL FLASHING TYPE 2
MS-1	PREFINISHED METAL SIDING TYPE 1
MS-2	PREFINISHED METAL SIDING TYPE 2
OHD	OVERHEAD DOOR
PH-1	PHENOLIC VERTICAL PANEL TYPE 1
PH-2	PHENOLIC VERTICAL PANEL TYPE 2
SC	PREFINISHED METAL SCUPPER
WMD	WIRE MESH DOOR



3 SOUTH ELEVATION
A201 1:100



2 NORTH ELEVATION
A201 1:100



1 EAST ELEVATION
A201 1:100

11	September 11, 2025/Revised per city comments	CJ
10	September 11, 2025/Issued with Addendum #7	CJ
9	September 08, 2025/Issued with Addendum #6	CJ
8	August 21, 2025/Issued with Addendum #2	CJ
7	July 31st 2025/Issued for Tender	CJ
6	July 07th 2025/Issued for Building Permit	CJ
5	July 02nd 2025/Issued for 95% Client Review	CJ
4	June 19th 2025/Issued for Site Plan Control R1	CJ
3	May 09, 2025/Issued for 65% Client Review	CJ
2	April 04th 2025/Issued for Site Plan Control	CJ
1	March 14th 2025/Issued for 33% Client Review	CJ
no.	date	revision / issue
		by

grc architects
A PROVENCHER ROY COMPANY
47 Clarence Street, Suite 401
Ottawa, Ontario K1N 1K1
613-241-6203 / 613-242-4180
info@grcarchitects.com www.grcarchitects.com

consultant:

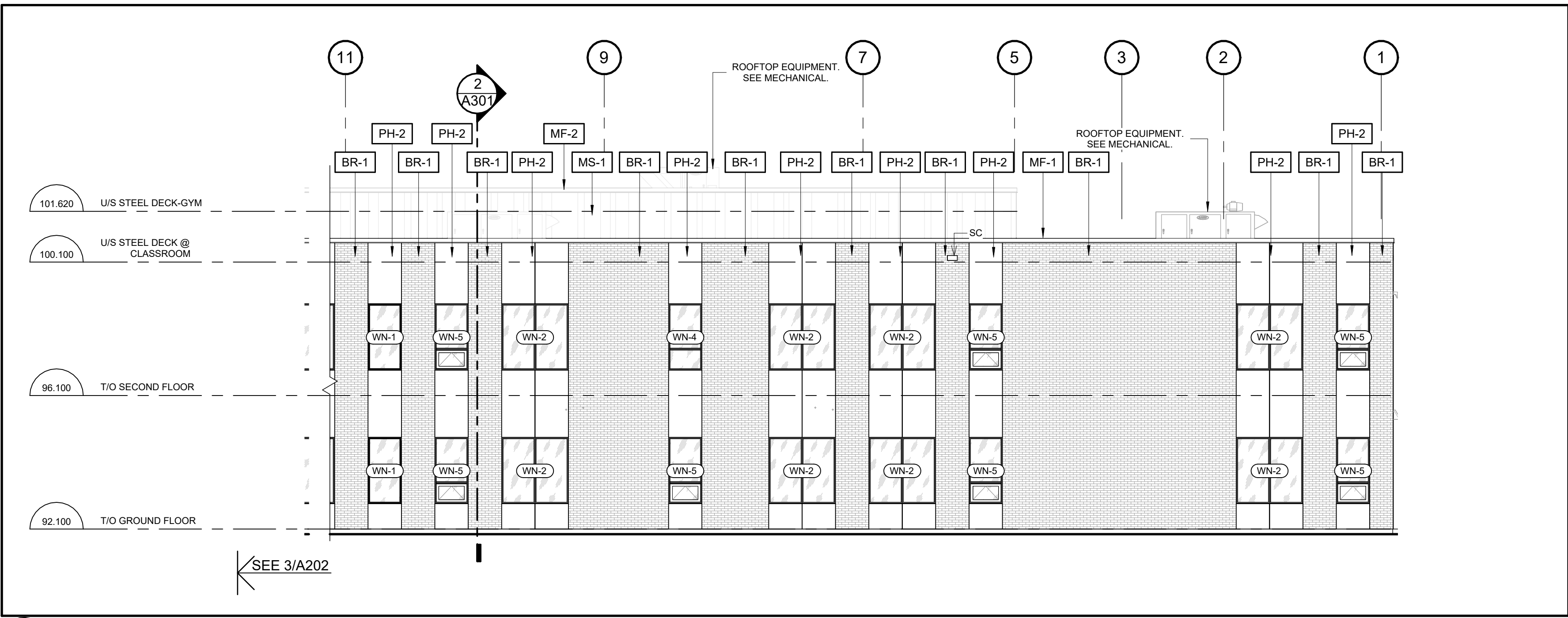
northpoint: professional stamp:

project title:
NEW CATHOLIC HIGH SCHOOL RIVERSIDE SOUTH
Mantidack Ontario

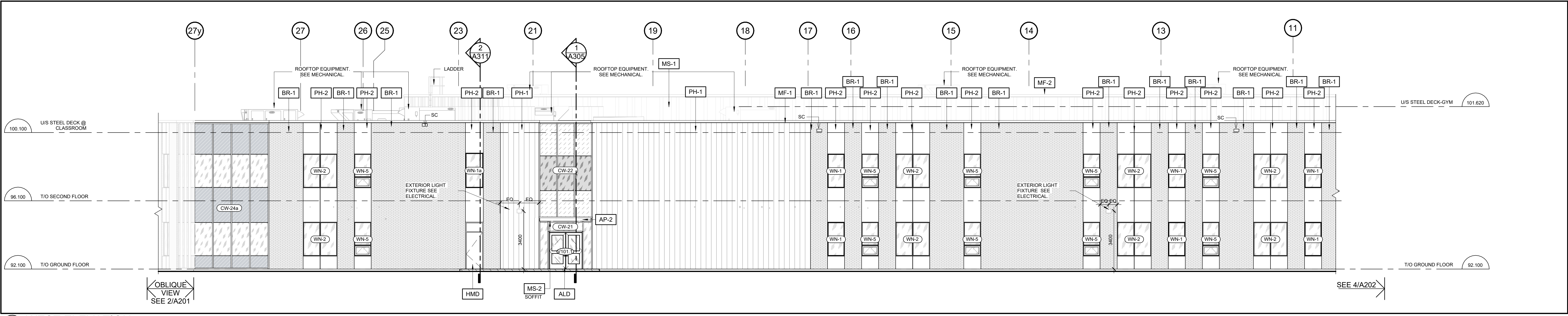
drawing title:
BUILDING ELEVATIONS

date	MAY 28 2025	job no.	
scale	As indicated		240097
drawn	JG	drawing no.	
approved	CJ/PP/PR		A201
plot date	03/19/13		
plan number	#19337	file no.	D07-12-25-0045

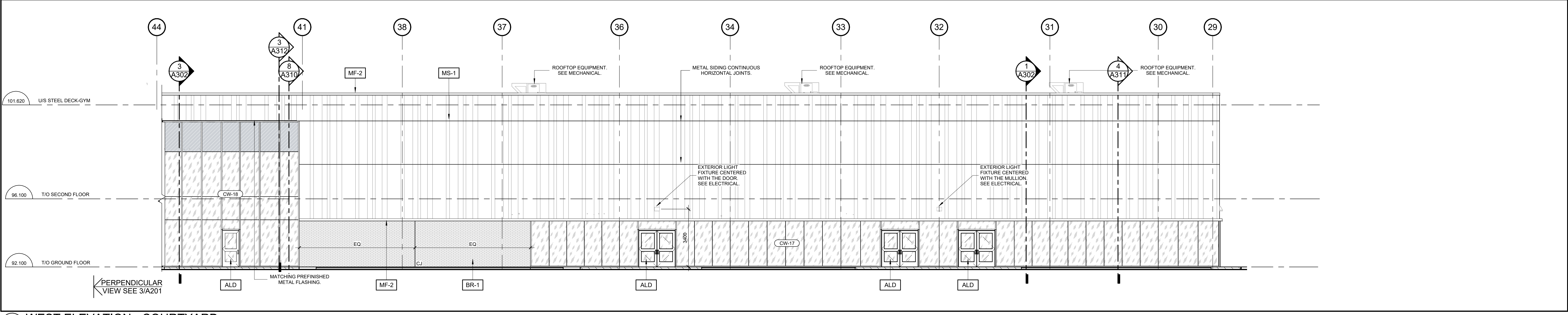
1: DO NOT SCALE FROM THIS DRAWING.
2: CONTRACTOR TO VERIFY ALL DIMENSIONS AND NOTIFY THE ARCHITECT OF ANY DISCREPANCIES BEFORE WORK COMMENCES.
3: THIS DRAWING TO BE READ IN CONJUNCTION WITH THE FOLLOWING DRAWINGS: STRUCTURAL, MECHANICAL, ELECTRICAL.



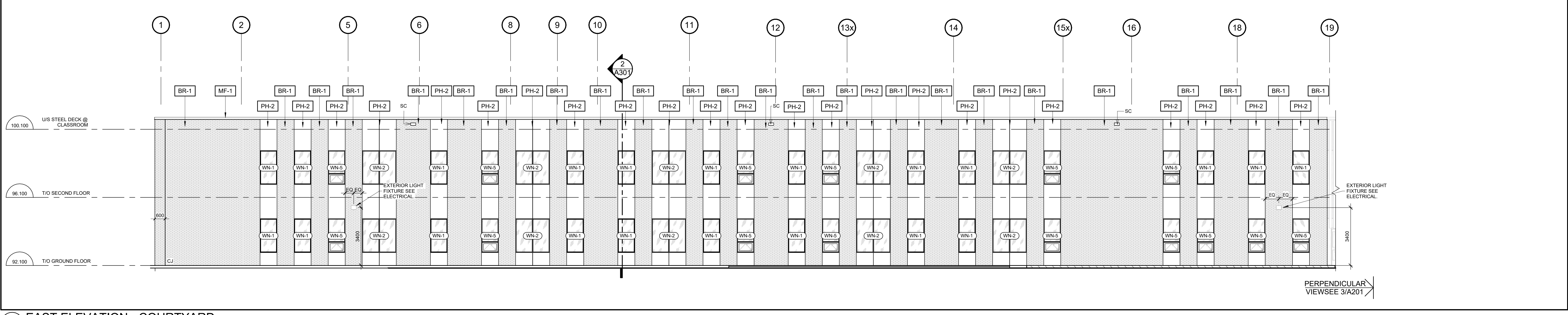
4 WEST ELEVATION CONT'D
A202 1:100



3 WEST ELEVATION
A202 1:100



2 WEST ELEVATION - COURTYARD
A202 1:100



1 EAST ELEVATION - COURTYARD
A202 1:100

ALLISON HAMLIN
MANAGER, DEVELOPMENT REVIEW ALL WARDS
PLANNING, DEVELOPMENT & BUILDING SERVICES
DEPARTMENT, CITY OF OTTAWA

APPROVED
By Allison Hamlin at 4:21 pm, Sep 24, 2025

KEYNOTES LEGEND	
ALD	PREFINISHED ALUMINUM DOOR
AP-2	ALUMINUM COMPOSITE PANEL
BR-1	BRICK TYPE 1
HMD	INSULATED HOLLOW METAL DOOR
MF-1	PREFINISHED METAL FLASHING TYPE 1
MF-2	PREFINISHED METAL FLASHING TYPE 2
MS-1	PREFINISHED METAL SIDING TYPE 1
MS-2	PREFINISHED METAL SIDING TYPE 2
PH-1	PHENOLIC VERTICAL PANEL TYPE 1
PH-2	PHENOLIC VERTICAL PANEL TYPE 2
SC	PREFINISHED METAL SCUPPER



10	September 11, 2025	Revised per city comments	CJ
9	September 11, 2025	Issued with Addendum #7	CJ
8	August 21, 2025	Issued with Addendum #2	CJ
7	July 31st 2025	Issued for Tender	CJ
6	July 10th 2025	Issued for Building Permit	CJ
5	July 10th 2025	Issued for 90% Client Review	CJ
4	June 19th 2025	Issued for Site Plan Control R1	CJ
3	May 28, 2025	Issued for 60% Client Review	CJ
2	April 4th 2025	Issued for Site Plan Control	CJ
1	March 14th 2025	Issued for 30% Client Review	CJ
no.	date	revision / issue	by

grc architects
A PROVENCHER ROY COMPANY
47 Clarence Street, Suite 401
Ottawa, Ontario K1N 9K1
t: 613-241-6203 f: 613-242-4180
info@grcarchitects.com www.grcarchitects.com

consultant

northpoint professional stamp

project title
NEW CATHOLIC HIGH SCHOOL RIVERSIDE SOUTH
Manitask Ontario

drawing title
BUILDING ELEVATIONS

date	MAY 28 2025	job no.	
scale	1 : 100		240097
drawn	JG	drawing no.	
approved	CJ/PP/PR		A202
plot date	03/19/13		
plan number	#19337	file no.	D07-12-25-0045

1. DO NOT SCALE FROM THIS DRAWING.
2. CONTRACTOR TO VERIFY ALL DIMENSIONS AND NOTIFY THE ARCHITECT OF ANY DISCREPANCIES BEFORE WORK COMMENCES
3. THIS DRAWING TO BE READ IN CONJUNCTION WITH THE FOLLOWING DRAWINGS: STRUCTURAL, MECHANICAL, ELECTRICAL