

APPROVED

By Allison Hamlin at 5:04 pm, Sep 15, 2025

A Hamlin

ALLISON HAMLIN
MANAGER, DEVELOPMENT REVIEW ALL WARDS
PLANNING, DEVELOPMENT & BUILDING SERVICES
DEPARTMENT, CITY OF OTTAWA



OTTAWA
CATHOLIC
SCHOOL BOARD

LEGEND

- BARrier FREE PARKING
- EXISTING BUILDING ENTRANCE/EXIT
- NEW BUILDING ENTRANCE/EXIT
- EXISTING BOLLARD TO REMAIN
- EXISTING CONCRETE CURB TO REMAIN
- EXISTING DEPRESSED CONCRETE CURB TO REMAIN
- EXISTING CONCRETE RUMBLE STRIP TO REMAIN
- EXISTING CHAIN LINK FENCE TO REMAIN
- 1200mm HIGH NEW CHAIN LINK FENCE
- NEW CURB, UNLESS OTHERWISE INDICATED
- DEPRESSED CURB
- ROAD CENTER LINE
- FIRE ROUTE
- SET BACK LINE
- PROPERTY LOT LINE

- IRON BAR (REFER TO SURVEY)
- EXISTING MAN HOLE TO REMAIN (REFER TO CIVIL)
- EXISTING CATCH BASIN TO REMAIN (REFER TO CIVIL)
- EXISTING SIDE INLET CATCH BASIN TO REMAIN (REFER TO CIVIL)
- EXISTING FLAG POLE TO REMAIN
- EXISTING UTILITY POST TO REMAIN
- EXISTING DRAIN TO REMAIN
- EXISTING UTILITY POLE ANCHOR TO REMAIN (REFER TO CIVIL)
- EXISTING SIGN TO REMAIN
- EXISTING BENCH TO REMAIN
- EXISTING UNDERGROUND HYDRO LINE, REFER TO ELECTRICAL
- EXISTING UNDERGROUND FIBRE OPTIC LINE, REFER TO ELECTRICAL
- EXISTING OVERHEAD UTILITY WIRES, REFER TO ELECTRICAL
- NEW FIRE ROUTE SIGN (EVERY 25 METRES)
- NEW HANDICAPPED PARKING SIGN
- NEW LOADING AREA SIGN
- NEW STOP SIGN
- NEW LIGHT STANDARD AND/OR REINSTATED EXISTING LIGHT STANDARD, REFER TO ELECTRICAL
- NEW FIRE HYDRANT (REFER TO CIVIL)
- NEW MAN HOLE (REFER TO CIVIL)
- NEW CATCH BASIN (REFER TO CIVIL)
- NEW BOLLARD

- NEW BUILDING
- EXISTING BUILDING
- EXISTING AREA NOT IN SCOPE OF WORK
- EXISTING LIGHT DUTY ASPHALT PAVING TO REMAIN
- EXISTING CONCRETE WALK TO REMAIN
- NEW TYPE 1 ASPHALT - HEAVY DUTY (REFER TO SPEC.)
- NEW TYPE 2 ASPHALT - LIGHT DUTY (REFER TO SPEC.)
- NEW CONCRETE WALK
- NEW SEEDD GRASS
- NEW SODDED GRASS (REFER TO LANDSCAPE)
- NEW CONCRETE PAVING
- CORNER TRIANGLE REQUIREMENT BY OFFICIAL PLAN
- NEW TREES (REFER TO LANDSCAPE)
- EXISTING TREES TO REMAIN (REFER TO LANDSCAPE)
- EXISTING SHRUB TO REMAIN (REFER TO LANDSCAPE)

SITE PLAN NOTES - NEW

- NEW SECOND FLOOR OVERHANG OR CANOPY
- NEW FIRE ROUTE
- NEW CURB RAMP WITH FLARED SIDES AND TACTILE SURFACE WALKING INDICATOR. REFER TO SITE DETAILS AND SPECIFICATIONS
- GARBAGE EARTH BIN, REFER TO DETAILS AND SPECIFICATIONS
- PROVIDE NEW SOD AND TOPSOIL WHERE EXISTING PORTABLE CLASSROOMS AND CRUSHED STONE PATHWAY WERE REMOVED
- NEW BICYCLE PARKING CONCRETE PAD WITH FIVE (5) NEW BICYCLE RACKS
- RELOCATED EXISTING PLAY STRUCTURE
- RIGHT OF WAY WIDENING LINE REQUIRED BY CITY OF OTTAWA
- ALIGN
- COURTYARD DESIGN WITH SAILS, REFER TO LANDSCAPE
- 1200mm WIDE PEDESTRIAN ACCESS GATE INSTALLED DURING CONSTRUCTION PHASE FOR STUDENTS AND PARENTS.
- RELOCATED EXISTING BICYCLE RACK
- COMPACTED GRAVEL PATH INSTALLED DURING CONSTRUCTION PHASE
- RELOCATED EXISTING CONCRETE BUNKER INCLUDING CONCRETE BASE AND/OR SLAB. INSTALL ON 300mm DEEP GRANULAR A PAD
- RELOCATED EXISTING BOULDERS
- NEW TRANSFORMER, REFER TO ELECTRICAL

GENERAL NOTES

- EXTENT OF CONTRACT IS LIMITED TO WITHIN PROPERTY EXCEPT WHERE SHOWN OTHERWISE.
- ALL WORK OUTSIDE PROPERTY LINE TO BE CONSTRUCTED TO CITY OF OTTAWA CONSTRUCTION STANDARDS.
- PARKING STALL SIZE: 2600mm x 5200mm
- BARrier FREE PARKING STALL: 3900mm x 5200mm
- FOR LANDSCAPE/PLANTING DETAILS SEE DRAWING AS PREPARED BY JBLA.
- FOR SITE GRADING INFORMATION SEE GRADING & DRAINAGE DRAWING AS PREPARED BY WSP.
- FOR SITE SERVICES INFORMATION SEE SITE SERVICES DRAWING AS PREPARED BY WSP.
- FOR SOIL INVESTIGATION REPORT REFER TO REPORT PREPARED BY EXP SERVICES.
- SLOPES OF CONCRETE/PAVING AT DEPRESSED CURBS SHALL NOT EXCEED 5%.
- CONTRACTOR TO VERIFY ALL DIMENSIONS ON SITE AND REPORT ANY ERRORS TO THE ARCHITECT. CONTRACTOR TO COORDINATE WITH ALL DRAWINGS.
- FOR SITE SURVEY INFORMATION, SEE TOPOLOGICAL SURVEY DRAWING PREPARED BY ANNIS, O'SULLIVAN, VOLLEBEKK LTD.

EXISTING SCHOOL + ADDITION

SITE DATA

SITE AREA	14,127.3 m ²
EXISTING SCHOOL FOOTPRINT	2,952.2 m ²
SCHOOL ADDITION FOOTPRINT	1,533.4 m ²
TOTAL FOOTPRINT	4,485.6 m ²
GROSS FLOOR AREA (AS PER CITY OF OTTAWA ZONING BY-LAW DEFINITION)	2,133.3 m ²
EXISTING SCHOOL GROSS FLOOR AREA	1,503.4 m ²
SCHOOL ADDITION GROSS FLOOR AREA	629.9 m ²
TOTAL GROSS FLOOR AREA	3,636.7 m ²

TOPOGRAPHICAL AND SURVEY INFORMATION PROVIDED BY STANTEC GEOMATICS LTD. (613)722-4420

PROJECT No.: 161614821-111
LEGAL DESCRIPTION:
UNIT 35, INDEX PLAN 4D-18
GEOGRAPHIC TOWNSHIP OF GOULBOURN
CITY OF OTTAWA

CITY OF OTTAWA ZONING

REQUIRED	PROVIDED
RI-RURAL INSTITUTIONAL ZONE RI2H (15)	
LOT AREA	MIN. 4000.0m ²
LOT COVERAGE	MAX. 30%
BUILDING HEIGHT	MAX. 15m
FRONT YARD SETBACK	MIN. 9.0m
REAR YARD SETBACK	MIN. 10.0m
INT. SIDE YARD SETBACK	MIN. 9.0m
CORNER YARD SETBACK	MIN. 9.0m
LANDSCAPING IN PARKING	MIN. 20%

PARKING CALCULATIONS

MOTOR VEHICLE PARKING EXISTING SCHOOL + ADDITION			
REQUIRED	15 EXISTING CLASSROOMS + 12 NEW CLASSROOMS = 39 TOTAL		
USE	No. CLASS	SPACES PER CLASS	SPACES REQ'D
ELEMENTARY SCHOOL	39	1.5/CLASS	59
TOTAL REQUIRED PARKING SPACES			59 SPACES
PROVIDED			
SPACES @ 5.2mD X 2.6mW			56 SPACES
SPACES FOR PERSONS WITH DISABILITIES @ 5.2mD X 3.6mW			3 SPACES
TOTAL SPACES PROVIDED			59 SPACES
BICYCLE PARKING (0.6m X 1.8m)			
REQUIRED			
USE	GROSS AREA	SPACES PER 100m ²	SPACES REQ'D
SCHOOL	3,636.7m ²	1 / 100m ²	37 SPACES
TOTAL REQUIRED PARKING SPACES			37 SPACES
PROVIDED			
SCHOOL			45 SPACES
TOTAL SPACES PROVIDED			45 SPACES
LOADING SPACES (3.5m X 7.0m)			
REQUIRED			
USE	GROSS AREA	TABLE 11.3A COLUMN V	SPACES REQ'D
SCHOOL	3,636.7m ²		1
TOTAL REQUIRED PARKING SPACES			1 SPACES
PROVIDED			
SCHOOL			1 SPACES

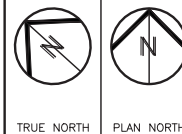
SITE PLAN NOTES - EXISTING

- EXISTING CONCRETE PAD
- EXISTING GAS METER FENCE
- SHEET METAL PROTECTION FOR EXISTING ELECTRICAL CONDUITS
- EXISTING FIRE PUMP HOUSE TO REMAIN, REFER TO ELECTRICAL
- EXISTING METAL STORAGE SHED TO REMAIN
- CORNER TRIANGLE REQUIREMENT BY OFFICIAL PLAN
- EXISTING ASPHALT PAVED SIDEWALK TO REMAIN
- EXISTING LOADING SPACE 3.5m X 7.0m
- EXISTING WATER WELL TO REMAIN
- EXISTING WOOD TREE BOXES TO REMAIN

ALL IDEAS, DESIGNS, ARRANGEMENTS, AND PLANS INDICATED OR REPRESENTED BY THIS DRAWING ARE OWNED BY AND THE PROPERTY OF EDWARD J. CUHACI AND ASSOCIATES INC. AND WERE CREATED, EVOLVED, AND DEVELOPED FOR USE ON AND IN CONNECTION WITH THE SPECIFIED PROJECT. NONE OF THE IDEAS, DESIGNS, ARRANGEMENTS OR PLANS SHALL BE USED BY OR DISCLOSED TO ANY PERSON, FIRM, OR CORPORATION FOR ANY PURPOSE WHATSOEVER WITHOUT THE WRITTEN PERMISSION OF EDWARD J. CUHACI AND ASSOCIATES INC.

THE ARCHITECT WAIVES ANY AND ALL RESPONSIBILITY AND LIABILITY FOR PROBLEMS WHICH ARISE FROM FAILURE TO FOLLOW THESE PLANS, SPECIFICATIONS, AND THE DESIGN INTENT THEY CONVEY, OR FOR PROBLEMS WHICH ARISE FROM OTHERS' FAILURE TO OBTAIN AND/OR FOLLOW THE ARCHITECT'S GUIDANCE WITH RESPECT TO ANY ERRORS, OMISSIONS, INCONSISTENCIES, AMBIGUITIES OR CONFLICTS WHICH ARE ALLEGED.

CONTRACTOR TO VERIFY ALL DIMENSIONS AND NOTIFY THE ARCHITECT OF ANY DISCREPANCIES BEFORE WORK COMMENCES. DO NOT SCALE DRAWINGS



EDWARD J. CUHACI
& ASSOCIATES ARCHITECTS INC.
171 Slater St., Suite 100, Ottawa, Ontario, K1P 5H7
Fax: (613) 238-1944 Telephone: (613) 238-7135 E-mail: info@cuhaci.com

PROJECT TITLE/TITRE DU PROJET
ST. PHILIP CATHOLIC SCHOOL
ADDITION 2025
79 MATLAND STREET S, RICHMOND, ON, K0A 2Z0

OTTAWA CATHOLIC SCHOOL BOARD
570 WEST HUNT CLUB ROAD
OTTAWA, ONTARIO, K2G 3R4

DRAWING TITLE/TITRE DU DESSIN

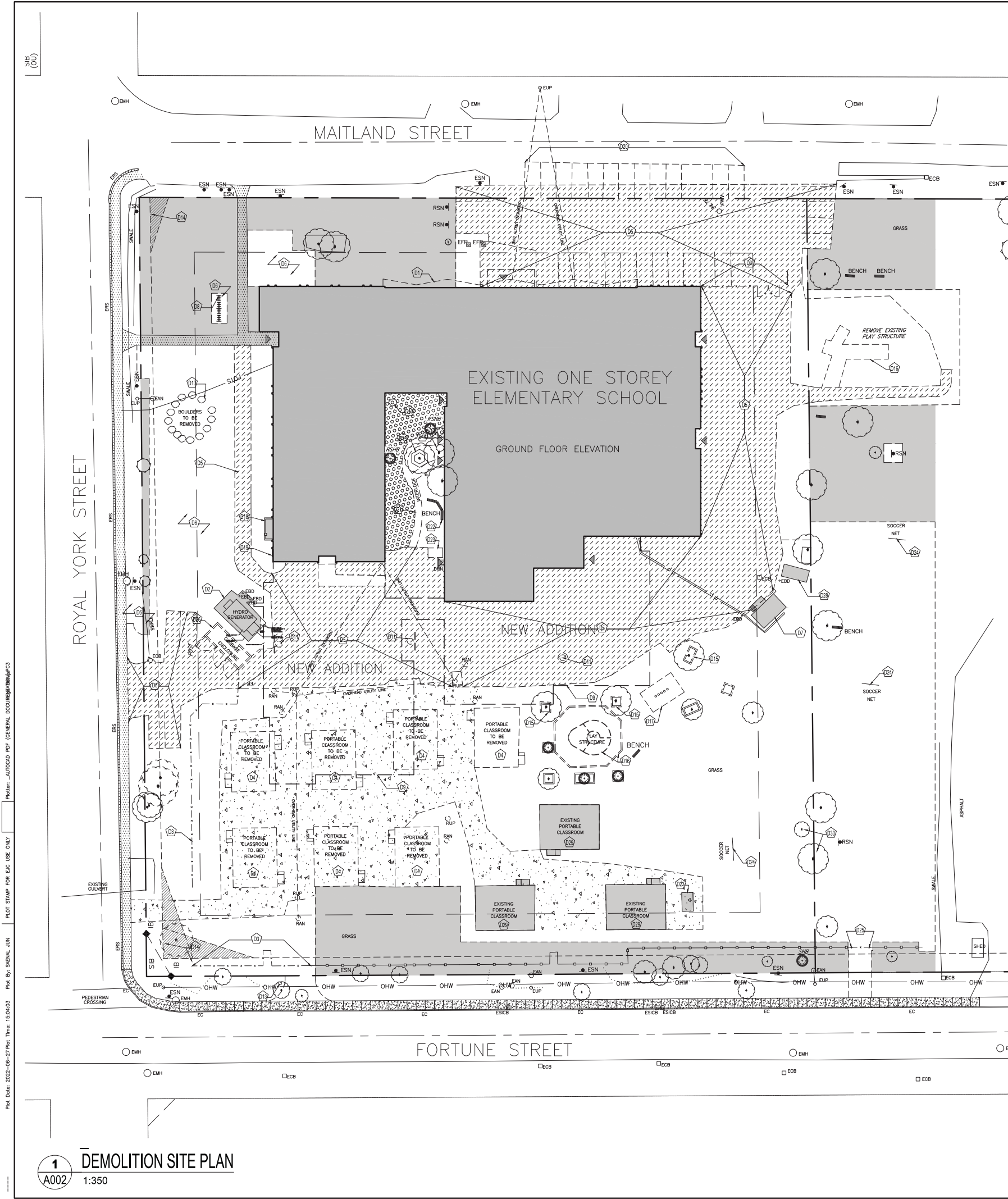
SITE PLAN

SCALE ÉCHELLE	PROJ. No. 2501	ISSUE No. 1	REV. No. 0
DRAWN BY DESSINÉ PAR	S.J.	DRAWING/DESSIN	
CHECKED BY VÉRIFIÉ PAR	J.J.		
DATE	2025		

A001

FICHER ACAD FILE: 2501-A001 SPC.dwg

1
A001
NEW SITE PLAN
1:350



- LEGEND**
- EXISTING BUILDING ENTRANCE/EXIT
 - EXISTING BOLLARD TO REMAIN
 - EXISTING CONCRETE CURB TO REMAIN
 - EXISTING DEPRESSED CONCRETE CURB TO REMAIN
 - EXISTING CONCRETE RUMBLE STRIP TO REMAIN
 - EXISTING CHAIN LINK FENCE TO REMAIN
 - TO BE DEMOLISHED / REMOVED
 - ROAD CENTER LINE
 - SET BACK LINE
 - PROPERTY LOT LINE
 - OUTLINE OF NEW BUILDING
 - IRON BAR (REFER TO SURVEY)
 - EXISTING MAN HOLE TO REMAIN (REFER TO CIVIL)
 - EXISTING CATCH BASIN TO REMAIN (REFER TO CIVIL)
 - EXISTING SIDE INLET CATCH BASIN TO REMAIN (REFER TO CIVIL)
 - EXISTING FLAG POLE TO REMAIN
 - EXISTING UTILITY POST TO REMAIN
 - EXISTING DRAIN TO REMAIN
 - EXISTING UTILITY POLE ANCHOR TO REMAIN (REFER TO CIVIL)
 - EXISTING SIGN TO REMAIN
 - EXISTING BENCH TO REMAIN
 - EXISTING UNDERGROUND HYDRO LINE, REFER TO ELECTRICAL
 - EXISTING UNDERGROUND FIBRE OPTIC LINE, REFER TO ELECTRICAL
 - EXISTING OVERHEAD UTILITY WIRES, REFER TO ELECTRICAL
 - REMOVE EXISTING FIRE ROUTE SIGN
 - REMOVE EXISTING LIGHT STANDARD
 - REMOVE EXISTING MAN HOLE (REFER TO CIVIL)
 - REMOVE EXISTING CATCH BASIN (REFER TO CIVIL)
 - REMOVE EXISTING UTILITY POST
 - REMOVE EXISTING UTILITY POLE ANCHOR (REFER TO CIVIL)
 - REMOVE EXISTING SIGN
 - REMOVE EXISTING CHAIN LINK FENCE TO NEAREST POST, INCLUDING CONCRETE FOOTINGS. COORDINATE WITH LOCATION OF NEW FENCE
 - EXISTING BUILDING
 - EXISTING AREA NOT IN SCOPE OF WORK
 - EXISTING LIGHT DUTY ASPHALT PAVING TO REMAIN
 - EXISTING CONCRETE WALK TO REMAIN
 - REMOVE EXISTING ASPHALT PAVING INCLUDING GRANULAR BASE
 - REMOVE EXISTING LANDSCAPING ROCKS INCLUDING GRANULAR BASE
 - REMOVE CRUSHED STONE PATHWAY
 - CORNER TRIANGLE REQUIREMENT BY OFFICIAL PLAN
 - REMOVE OR TRANSPLANT EXISTING TREES (REFER TO LANDSCAPE)
 - REMOVE EXISTING SHRUB (REFER TO LANDSCAPE)
 - REMOVE EXISTING Boulders (REFER TO LANDSCAPE)
 - EXISTING TREES TO REMAIN (REFER TO LANDSCAPE)
 - EXISTING SHRUB TO REMAIN (REFER TO LANDSCAPE)

- SITE PLAN DRAWING NOTES**
- CANOPY OR 2nd FLOOR ABOVE.
 - EXISTING CONCRETE PAD, SAW-CUT SOUTH-EAST CORNER TO ACCOMMODATE NEW ADDITION BUILDING
 - REMOVE EXISTING CHAIN LINK FENCE TO NEAREST POST INCLUDING CONCRETE FOOTINGS. PROVIDE NEW BRACE BETWEEN TWO LAST REMAINING POSTS. COORDINATE WORK WITH NEW PARKING LOT
 - EXISTING PORTABLES WILL BE REMOVED BY OWNER
 - PRIOR TO CONSTRUCTION REMOVE EXISTING ASPHALT PAVING INCLUDING EXISTING GRANULAR BASE.
 - REGRADE EXISTING SITE AS REQUIRED FOR NEW GRADING AND TOPSOIL/SOD. REFER TO CIVIL DRAWINGS
 - EXISTING FIRE PUMP HOUSE TO REMAIN, REFER TO ELECTRICAL AND MECHANICAL
 - TEMPORARILY REMOVE EXISTING BIKE RACK, STORE IN SAFE PLACE AND REINSTATE AT COMPLETION OF NEW WORK. SEE A001 FOR THE NEW LOCATION
 - OUTLINE OF NEW BUILDING
 - REMOVE EXISTING BOULDER
 - REMOVE EXISTING BASKETBALL/ FUNNEL BALL POSTS INCLUDING CONCRETE BASE. CHIP OUT AND REMOVE EXISTING CONCRETE BASE. STORE BASKETBALL POSTS IN SAFE PLACE AND TURN OVER TO OWNER
 - NOT USED
 - EXISTING TERMINAL BOX - BELL
 - CORNER TRIANGLE REQUIREMENT BY OFFICIAL PLAN
 - REMOVE EXISTING TREE AND WOOD BENCH AROUND EXISTING TREE
 - CAREFULLY REMOVE EXISTING PLAY STRUCTURE, DISMANTLE AND STORE IN SAFE PLACE FOR RELOCATION. REMOVE EXISTING TIMBER RETAINING WALL AROUND PLAY STRUCTURE AND WOOD CHIPS. REFER TO CONSTRUCTION PHASING DRAWING A022 FOR DEMOLITION SCHEDULING.
 - REMOVE EXISTING WOOD TRUNKS AND BED OF WOOD CHIPS AROUND
 - EXISTING GAS METER FENCE
 - SHEET METAL PROTECTION FOR EXISTING ELECTRICAL CONDUITS
 - REMOVE EXISTING PAINTED MARKING ON STREET
 - REMOVE EXISTING INTERLOCKING PAVEMENT BLOCKS INCLUDING EXISTING GRANULAR BASE
 - REMOVE EXISTING BENCH INCLUDING CONCRETE BASE
 - REMOVE EXISTING CONCRETE BUNKER INCLUDING CONCRETE BASE AND/OR SLAB. RELOCATE TO NEW LOCATION AS DIRECTED BY OWNER. INSTALL ON 300mm DEEP GRANULAR A PAD. SEE CONSTRUCTION PHASING DRAWING A022 FOR RELOCATION
 - REMOVE EXISTING SOCCER NET INCLUDING CONCRETE BASE. CHIP OUT AND REMOVE EXISTING CONCRETE BASE. STORE SOCCER NET POSTS IN SAFE PLACE AND TURN OVER TO OWNER
 - REMOVE EXISTING CHAIN LINK FENCE TO NEAREST POST INCLUDING CONCRETE FOOTINGS FOR TEMPORARY SITE ENTRANCE DURING CONSTRUCTION PHASE. PROVIDE NEW BRACE BETWEEN TWO LAST REMAINING POSTS. SEE A022.
 - REMOVE EXISTING GARBAGE ENCLOSURE INCLUDING CONCRETE FOOTINGS
 - NOT USED
 - EXISTING METAL STORAGE SHED TO REMAIN
 - EXISTING PORTABLE CLASSROOMS TO REMAIN FOR THE DURATION OF CONSTRUCTION - TO BE REMOVED AT COMPLETION OF CONSTRUCTION.
 - REMOVE EXISTING TREE (REFER TO LANDSCAPE)

APPROVED
By Allison Hamlin at 5:04 pm, Sep 15, 2025

ALLISON HAMLIN
MANAGER, DEVELOPMENT REVIEW ALL WARDS
PLANNING, DEVELOPMENT & BUILDING SERVICES
DEPARTMENT, CITY OF OTTAWA

OTTAWA CATHOLIC SCHOOL BOARD

ISSUE NO.	REV. NO.	DATE	ISSUE
1	0	2025/09/10	ISSUED FOR 1ST REVIEW COMMENTS RESPONSE

LES IDEES, CONCEPTS, DISPOSITIONS ET PLANS MONTRES OU REPRESENTES PAR CE DESSIN APPARTIENNENT A EDWARD J. CUHACI AND ASSOCIATES ARCHITECTS INC. ET ONT ETE CREEES ET DEVELOPPES POUR ETRE UTILISEES DANS LE CADRE DU PRESENT PROJET. ILS NE DOIVENT PAS ETRE UTILISES A D'AUTRES FINS NI COMMUNIQUEES A QUI QUE CE SOIT SANS LA PERMISSION ECRITE DE EDWARD J. CUHACI AND ASSOCIATES ARCHITECTS INC.

L'ARCHITECTE DECLINE TOUTE RESPONSABILITE DECOULANT DE PROBLEMES FAISANT SUITE AU NON-RESPECT DES PLANS ET DEVIS OU DE L'INTENTION DU CONCEPT QU'ILS TRANSMETTENT OU DE TOUTS PROBLEMES POUVANT RESULTER DU DEFAUT DE TIERS D'OBTENIR OU DE SUIVRE LES INSTRUCTIONS DE L'ARCHITECTE RELATIVEMENT AUX ERREURS, OMISSIONS, INCOHERENCES, AMBIGUITES OU CONTRADICTIONS ALLEGUEES.

L'ENTREPRENEUR DOIT VERIFIER TOUTES LES DIMENSIONS SUR PLACE ET INFORMER L'ARCHITECTE DE TOUT ECART AVANT LE DEBUT DES TRAVAUX. NE PAS MESURER LES DESSINS A L'ECHELLE.

ALL IDEAS, DESIGNS, ARRANGEMENTS, AND PLANS INDICATED OR REPRESENTED BY THIS DRAWING ARE OWNED BY AND THE PROPERTY OF EDWARD J. CUHACI AND ASSOCIATES INC. AND WERE CREATED, EVOLVED, AND DEVELOPED FOR USE ON AND IN CONNECTION WITH THE SPECIFIED PROJECT. NONE OF THE IDEAS, DESIGNS, ARRANGEMENTS OR PLANS SHALL BE USED BY OR DISCLOSED TO ANY PERSON, FIRM, OR CORPORATION FOR ANY PURPOSE WHATSOEVER WITHOUT THE WRITTEN PERMISSION OF EDWARD J. CUHACI AND ASSOCIATES INC.

THE ARCHITECT WAIVES ANY AND ALL RESPONSIBILITY AND LIABILITY FOR PROBLEMS WHICH ARISE FROM FAILURE TO FOLLOW THESE PLANS, SPECIFICATIONS, AND THE DESIGN INTENT THEY CONVEY, OR FOR PROBLEMS WHICH ARISE FROM OTHERS' FAILURE TO OBTAIN AND/OR FOLLOW THE ARCHITECT'S GUIDANCE WITH RESPECT TO ANY ERRORS, OMISSIONS, INCONSISTENCIES, AMBIGUITIES OR CONFLICTS WHICH ARE ALLEGED.

CONTRACTOR TO VERIFY ALL DIMENSIONS AND NOTIFY THE ARCHITECT OF ANY DISCREPANCIES BEFORE WORK COMMENCES. DO NOT SCALE DRAWINGS

TRUE NORTH PLAN NORTH

ONTARIO ASSOCIATION OF ARCHITECTS
JERRY CUHACI
LICENSE
6193

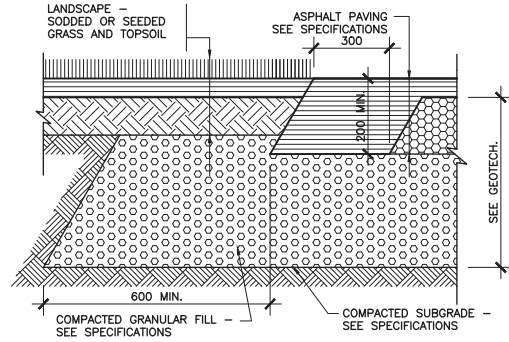
EDWARD J. CUHACI & ASSOCIATES ARCHITECTS Inc.
171 Slater St., Suite 100, Ottawa, Ontario, K1P 5H7
Fax: (613) 238-1944 Telephone: (613) 238-7135 E-mail: info@cuhaci.com

PROJECT TITLE/TITRE DU PROJET
ST. PHILIP CATHOLIC SCHOOL ADDITION 2025
79 MAITLAND STREET S, RICHMOND, ON, K0A 2Z0

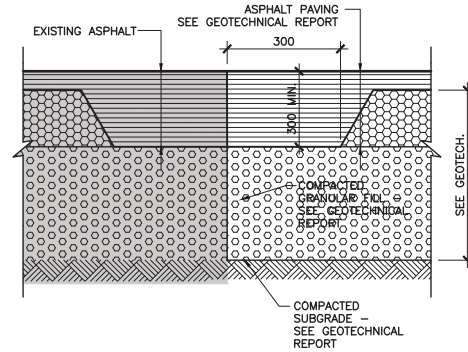
OTTAWA CATHOLIC SCHOOL BOARD
570 WEST HUNT CLUB ROAD
OTTAWA, ONTARIO, K2G 3R4

DRAWING TITLE/TITRE DU DESSIN
DEMOLITION SITE PLAN

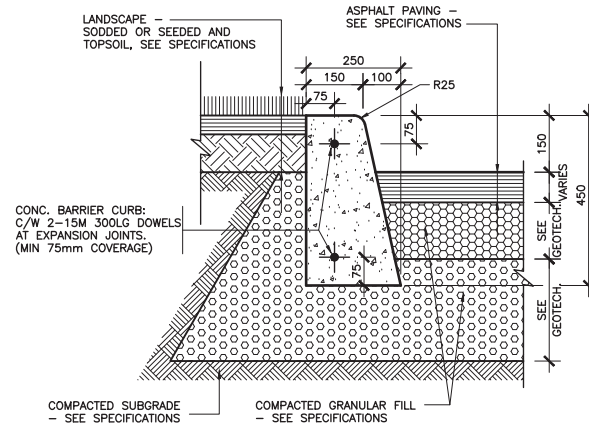
Plot Date: 2022-06-27 Plot Time: 15:04:03 Plot By: SGNAL JUN
Plot Stamp For EAC Use Only
Printer: AUTOCAD PDF (GENERAL DOCUMENT) 1/1



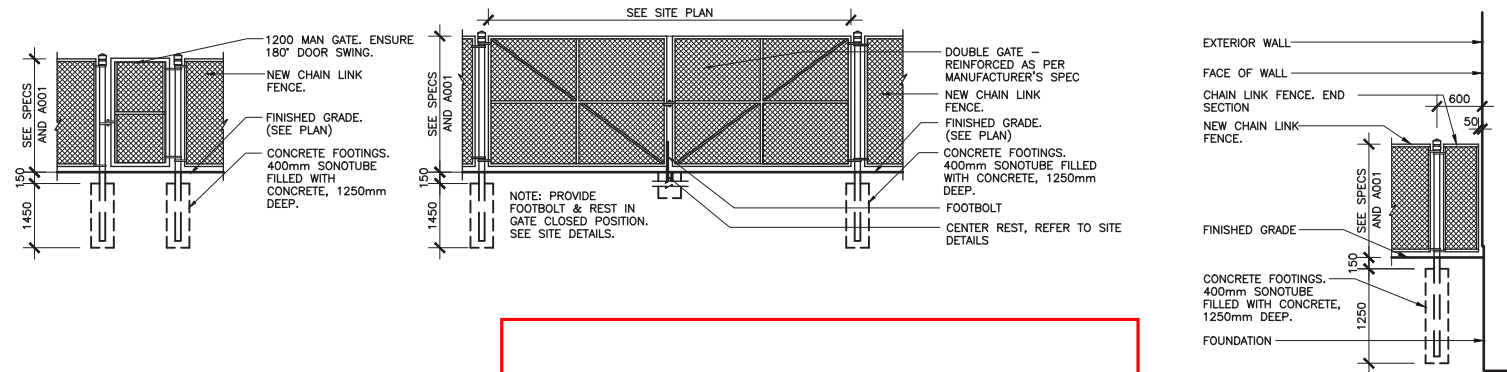
SECTION DETAIL
1 ASPHALT @ GRASS
A003 1:10



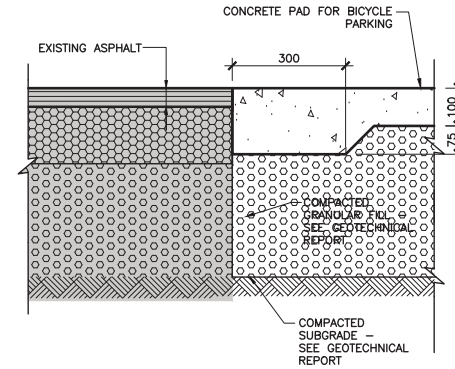
SECTION DETAIL
2 NEW ASPHALT PAVING @ EXISTING
A003 1:10



SECTION DETAIL
3 GRASS - CONCRETE CURB - ASPHALT
A003 1:10

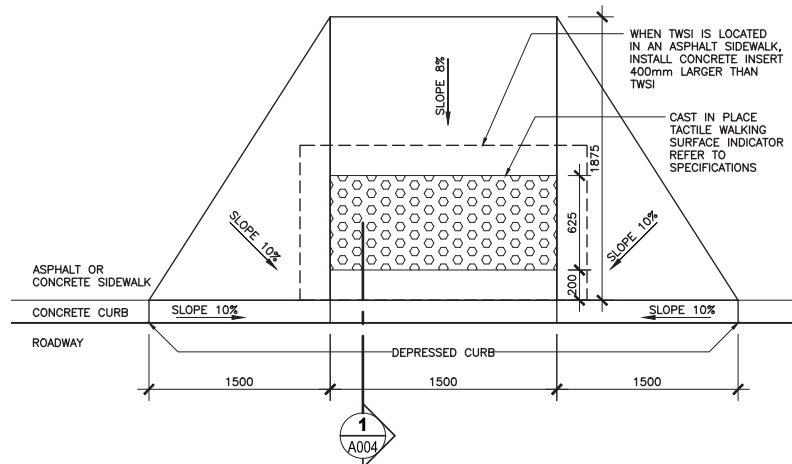


ELEVATION
4 FENCE AND GATE DETAILS
A003 1:50

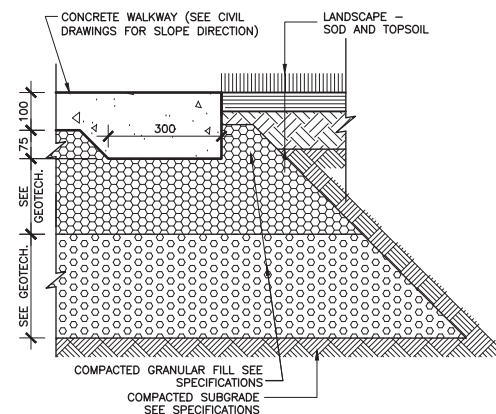


SECTION DETAIL
5 CONCRETE PAD @ EXISTING ASPHALT
A003 1:10

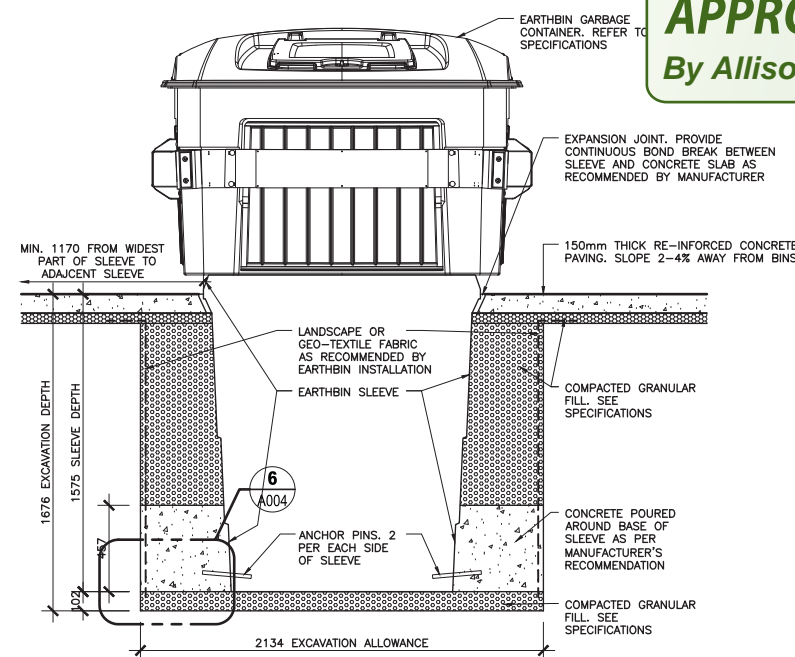
ALLISON HAMLIN
MANAGER, DEVELOPMENT REVIEW ALL WARDS
PLANNING, DEVELOPMENT & BUILDING SERVICES
DEPARTMENT, CITY OF OTTAWA



PLAN DETAIL
6 TACTILE WALKING SURFACE INDICATOR (TWSI)
A003 1:25



SECTION DETAIL
7 CONC. SIDE WALK @ SOD
A003 1:10



SECTION DETAIL
8 EARTHBIN GARBAGE SECTION
A003 1:20

APPROVED
By Allison Hamlin at 5:03 pm, Sep 15, 2025



**OTTAWA
CATHOLIC
SCHOOL BOARD**

1 0 2025/03/10 ISSUED FOR 1ST REVIEW COMMENTS RESPONSE

ISSUE NO. REV. NO. DATE ISSUE

LES IDÉES, CONCEPTS, DISPOSITIONS ET PLANS MONTRÉS OU REPRÉSENTÉS PAR CE DESSIN APPARTIENNENT À EDWARD J. CUHACI AND ASSOCIATES ARCHITECTS INC. ET ONT ÉTÉ CRÉÉS ET DÉVELOPPÉS POUR ÊTRE UTILISÉS DANS LE CADRE DU PRÉSENT PROJET. ILS NE DOIVENT PAS ÊTRE UTILISÉS À D'AUTRES FINS NI COMMUNIQUÉS À QUI QUE CE SOIT SANS LA PERMISSION ÉCRITE DE EDWARD J. CUHACI AND ASSOCIATES ARCHITECTS INC.

L'ARCHITECTE DÉCLINE TOUTE RESPONSABILITÉ DÉCOULANT DE PROBLÈMES FAISANT SUITE AU NON-RESPECT DES PLANS ET DEVIS OU DE L'INTENTION DU CONCEPT QU'ILS TRANSMETTENT OU DE TOUTS PROBLÈMES POUVANT RÉSULTER DU DÉFAUT DE TIERS D'OBTENIR OU DE SUIVRE LES INSTRUCTIONS DE L'ARCHITECTE RELATIVEMENT AUX ERREURS, OMISSIONS, INCOHÉRENCES, AMBIGUITÉS OU CONTRADICTIONS ALLÉGUÉES.

L'ENTREPRENEUR DOIT VÉRIFIER TOUTES LES DIMENSIONS SUR PLACE ET INFORMER L'ARCHITECTE DE TOUT ÉCART AVANT LE DÉBUT DES TRAVAUX. NE PAS MESURER LES DESSINS À L'ÉCHELLE.

ALL IDEAS, DESIGNS, ARRANGEMENTS, AND PLANS INDICATED OR REPRESENTED BY THIS DRAWING ARE OWNED BY AND THE PROPERTY OF EDWARD J. CUHACI AND ASSOCIATES INC. AND WERE CREATED, EVOLVED, AND DEVELOPED FOR USE ON AND IN CONNECTION WITH THE SPECIFIED PROJECT. NONE OF THE IDEAS, DESIGNS, ARRANGEMENTS OR PLANS SHALL BE USED BY OR DISCLOSED TO ANY PERSON, FIRM, OR CORPORATION FOR ANY PURPOSE WHATSOEVER WITHOUT THE WRITTEN PERMISSION OF EDWARD J. CUHACI AND ASSOCIATES INC.

THE ARCHITECT WAIVES ANY AND ALL RESPONSIBILITY AND LIABILITY FOR PROBLEMS WHICH ARISE FROM FAILURE TO FOLLOW THESE PLANS, SPECIFICATIONS, AND THE DESIGN INTENT THEY CONVEY, OR FOR PROBLEMS WHICH ARISE FROM OTHERS' FAILURE TO OBTAIN AND/OR FOLLOW THE ARCHITECT'S GUIDANCE WITH RESPECT TO ANY ERRORS, OMISSIONS, INCONSISTENCIES, AMBIGUITIES OR CONFLICTS WHICH ARE ALLEGED.

CONTRACTOR TO VERIFY ALL DIMENSIONS AND NOTIFY THE ARCHITECT OF ANY DISCREPANCIES BEFORE WORK COMMENCES. DO NOT SCALE DRAWINGS



TRUE NORTH



PLAN NORTH



**EDWARD J. CUHACI
& ASSOCIATES ARCHITECTS Inc.**
171 Slater St, Suite 100, Ottawa, Ontario, K1P 5H7
Fax: (613) 238-1944 Telephone: (613) 238-7135 E-mail: info@cuhaci.com

PROJECT TITLE/TITRE DU PROJET
**ST. PHILIP CATHOLIC SCHOOL
ADDITION 2025**
79 MATLAND STREET S, RICHMOND, ON, K0A 2Z0

OTTAWA CATHOLIC SCHOOL BOARD
570 WEST HUNT CLUB ROAD
OTTAWA, ONTARIO, K2G 3R4

DRAWING TITLE/TITRE DU DESSIN

SITE DETAILS

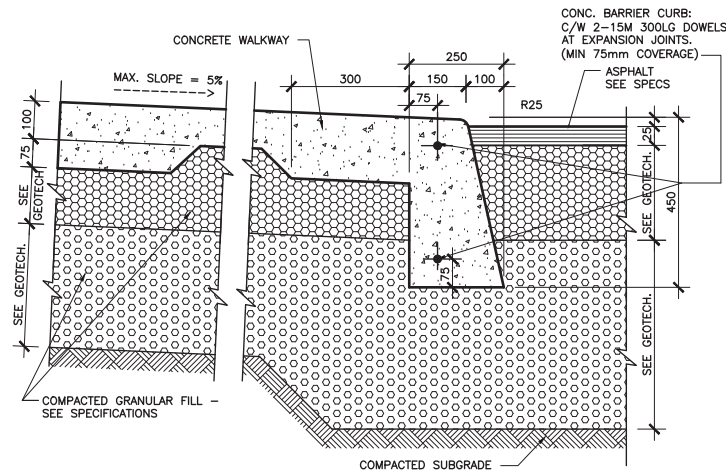
SCALE
ÉCHELLE - 2501
PROJ. No 1
ISSUE No 1
REV. No 0

DRAWN BY
DESSINÉ PAR S.J.
CHECKED BY
VÉRIFIÉ PAR J.J.
DATE 2025

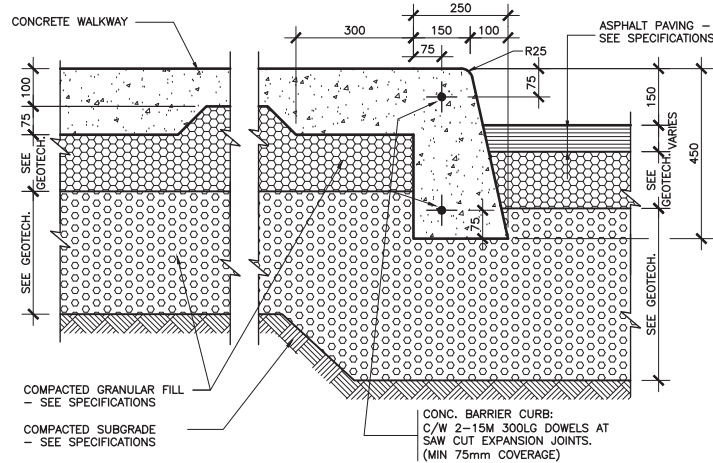
A003

FICHER ACAD FILE: 2501-A003 SPC.dwg

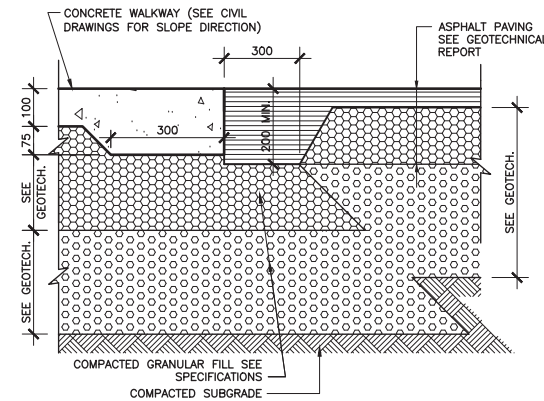
Plot Date: 2022-06-27 Plot Time: 15:04:03 Plot By: SGNAL JUN Plot Stamp For EAC Use Only Plotter: AUTOCAD PDF (GENERAL DOCUMENT) 300x425



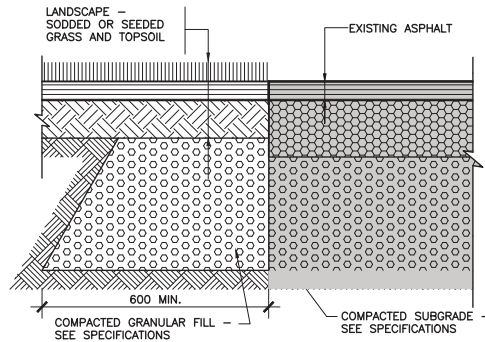
SECTION DETAIL
1 CONC. SIDEWALK - DEPRESSED CURB - ASPHALT
A004 1:10



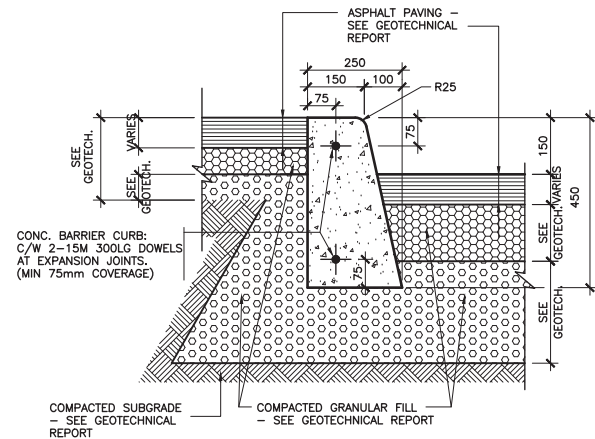
SECTION DETAIL
2 CONC. SIDEWALK - CONC. CURB - ASPHALT
A004 1:10



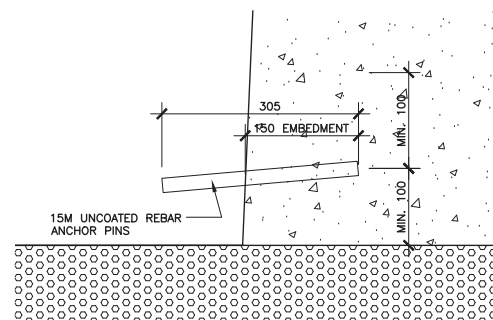
SECTION DETAIL
3 CONC. WALK - ASPHALT
A004 1:10



SECTION DETAIL
4 GRASS @ EXISTING ASPHALT
A004 1:10



SECTION DETAIL
5 ASPHALT - CONC. CURB - ASPHALT
A004 1:10



SECTION DETAIL
6 ANCHOR PIN DETAIL
A004 1:5

APPROVED
By Allison Hamlin at 5:03 pm, Sep 15, 2025

ALLISON HAMLIN
MANAGER , DEVELOPMENT REVIEW ALL WARDS
PLANNING, DEVELOPMENT & BUILDING SERVICES
DEPARTMENT, CITY OF OTTAWA



**OTTAWA
CATHOLIC
SCHOOL BOARD**

1 0 2025/03/10 ISSUED FOR 1ST REVIEW COMMENTS RESPONSE

ISSUE NO. REV. NO. DATE ISSUE

LES IDÉES, CONCEPTS, DISPOSITIONS ET PLANS MONTRÉS OU REPRÉSENTÉS PAR CE DESSIN APPARTIENNENT À EDWARD J. CUHACI AND ASSOCIATES ARCHITECTS INC. ET ONT ÉTÉ CRÉÉS ET DÉVELOPPÉS POUR ÊTRE UTILISÉS DANS LE CADRE DU PRÉSENT PROJET. ILS NE DOIVENT PAS ÊTRE UTILISÉS À D'AUTRES FINS NI COMMUNIQUÉS À QUI QUE CE SOIT SANS LA PERMISSION ÉCRITE DE EDWARD J. CUHACI AND ASSOCIATES ARCHITECTS INC.

L'ARCHITECTE DÉCLINE TOUTE RESPONSABILITÉ DÉCOULANT DE PROBLÈMES FAISANT SUITE AU NON-RESPECT DES PLANS ET DEVIS OU DE L'INTENTION DU CONCEPT QU'ILS TRANSMETTENT OU DE TOUTS PROBLÈMES POUVANT RÉSULTER DU DÉFAUT DE TIERS D'OBTENIR OU DE SUIVRE LES INSTRUCTIONS DE L'ARCHITECTE RELATIVEMENT AUX ERREURS, OMISSIONS, INCOHÉRENCES, AMBIGUITÉS OU CONTRADICTIONS ALLÉGUÉES.

L'ENTREPRENEUR DOIT VÉRIFIER TOUTES LES DIMENSIONS SUR PLACE ET INFORMER L'ARCHITECTE DE TOUT ÉCART AVANT LE DÉBUT DES TRAVAUX. NE PAS MESURER LES DESSINS À L'ÉCHELLE.

ALL IDEAS, DESIGNS, ARRANGEMENTS, AND PLANS INDICATED OR REPRESENTED BY THIS DRAWING ARE OWNED BY AND THE PROPERTY OF EDWARD J. CUHACI AND ASSOCIATES INC. AND WERE CREATED, EVOLVED, AND DEVELOPED FOR USE ON AND IN CONNECTION WITH THE SPECIFIED PROJECT. NONE OF THE IDEAS, DESIGNS, ARRANGEMENTS OR PLANS SHALL BE USED BY OR DISCLOSED TO ANY PERSON, FIRM, OR CORPORATION FOR ANY PURPOSE WHATSOEVER WITHOUT THE WRITTEN PERMISSION OF EDWARD J. CUHACI AND ASSOCIATES INC.

THE ARCHITECT WAIVES ANY AND ALL RESPONSIBILITY AND LIABILITY FOR PROBLEMS WHICH ARISE FROM FAILURE TO FOLLOW THESE PLANS, SPECIFICATIONS, AND THE DESIGN INTENT THEY CONVEY, OR FOR PROBLEMS WHICH ARISE FROM OTHERS' FAILURE TO OBTAIN AND/OR FOLLOW THE ARCHITECT'S GUIDANCE WITH RESPECT TO ANY ERRORS, OMISSIONS, INCONSISTENCIES, AMBIGUITIES OR CONFLICTS WHICH ARE ALLEGED.

CONTRACTOR TO VERIFY ALL DIMENSIONS AND NOTIFY THE ARCHITECT OF ANY DISCREPANCIES BEFORE WORK COMMENCES. DO NOT SCALE DRAWINGS



**EDWARD J. CUHACI
& ASSOCIATES ARCHITECTS Inc.**

171 Slater St., Suite 100, Ottawa, Ontario, K1P 5H7
Fax: (613) 238-1944 Telephone: (613) 238-7135 E-mail: info@cuhaci.com

PROJECT TITLE/TITRE DU PROJET
**ST. PHILIP CATHOLIC SCHOOL
ADDITION 2025**
79 MATTLAND STREET S, RICHMOND, ON, K0A 2Z0

OTTAWA CATHOLIC SCHOOL BOARD
570 WEST HUNT CLUB ROAD
OTTAWA, ONTARIO, K2G 3R4

DRAWING TITLE/TITRE DU DESSIN

SITE DETAILS

SCALE ÉCHELLE - 2501 1 0

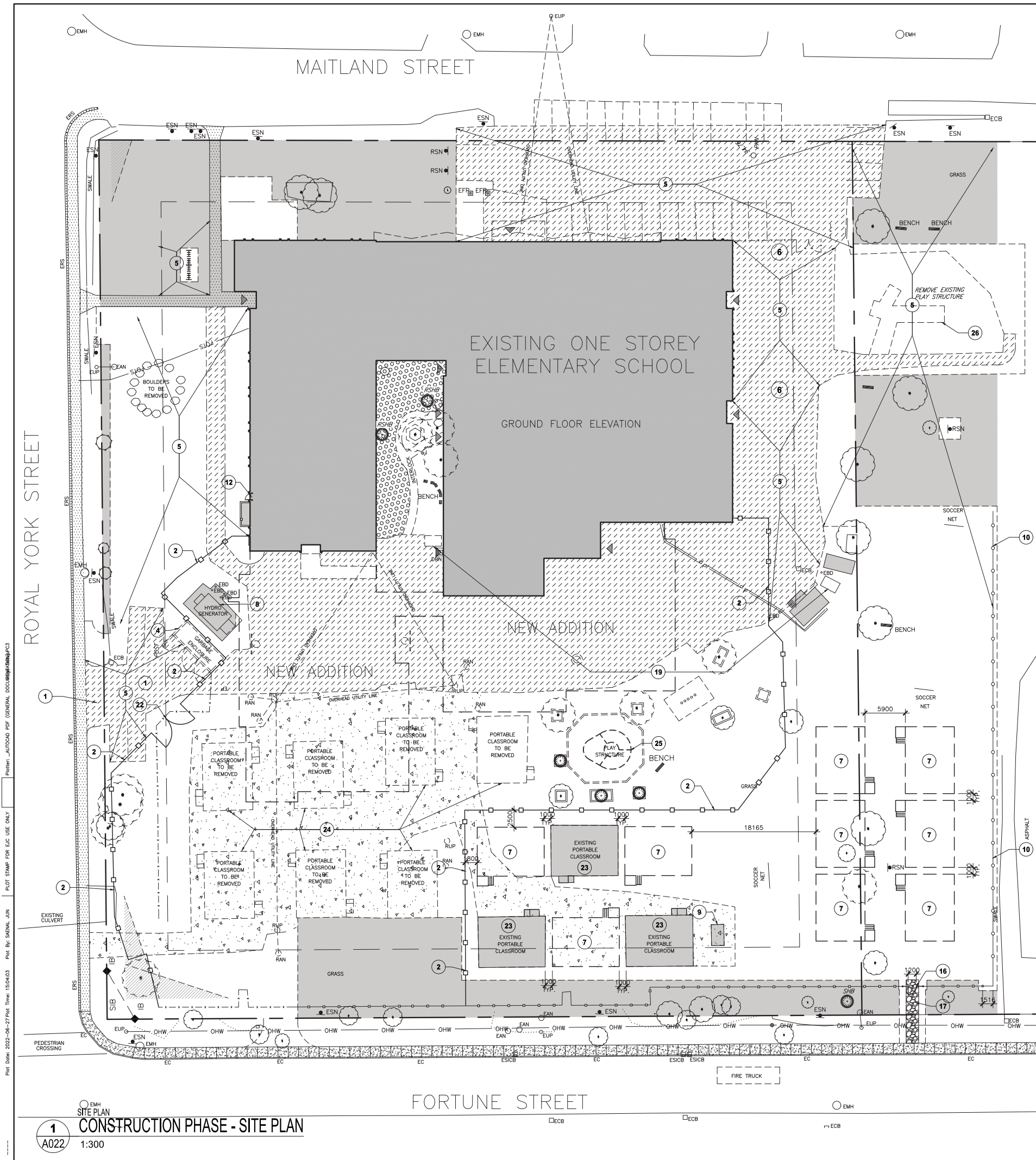
DRAWN BY DESSINÉ PAR S.J.

CHECKED BY VÉRIFIÉ PAR J.J.

DATE 2025

A004

FICHER ACAD FILE: 2501-A004 SPC.dwg



LEGEND

▽

EXISTING BUILDING ENTRANCE/EXIT

• EBD

EXISTING BOLLARD TO REMAIN

EC

EXISTING CONCRETE CURB TO REMAIN

EDC

EXISTING DEEPENED CONCRETE CURB TO REMAIN

ERS

EXISTING CONCRETE RUMBLE STRIP TO REMAIN

○

EXISTING CHAIN LINK FENCE TO REMAIN

TO BE DEMOLISHED / REMOVED

ROAD CENTER LINE

SET BACK LINE

PROPERTY LOT LINE

OUTLINE OF NEW BUILDING

■ SIB

IRON BAR (REFER TO SURVEY)

○ EMH

EXISTING MAN HOLE TO REMAIN (REFER TO CIVIL)

□ ECB

EXISTING CATCH BASIN TO REMAIN (REFER TO CIVIL)

□ ESICB

EXISTING SIDE INLET CATCH BASIN TO REMAIN (REFER TO CIVIL)

□ EFP

EXISTING FLAG POLE TO REMAIN

○ EUP

EXISTING UTILITY POST TO REMAIN

□ DRN

EXISTING DRAIN TO REMAIN

○ EAN

EXISTING UTILITY POLE ANCHOR TO REMAIN (REFER TO CIVIL)

■ ESN

EXISTING SIGN TO REMAIN

EXISTING UNDERGROUND HYDRO LINE, REFER TO ELECTRICAL

EXISTING UNDERGROUND FIBRE OPTIC LINE, REFER TO ELECTRICAL

EXISTING OVERHEAD UTILITY WIRES, REFER TO ELECTRICAL

▽ RFR

REMOVE EXISTING FIRE ROUTE SIGN

✦ RLS

REMOVE EXISTING LIGHT STANDARD

○ EMH

REMOVE EXISTING MAN HOLE (REFER TO CIVIL)

□ ECB

REMOVE EXISTING CATCH BASIN (REFER TO CIVIL)

○ RUP

REMOVE EXISTING UTILITY POST

□ RAN

REMOVE EXISTING UTILITY POLE ANCHOR (REFER TO CIVIL)

■ RSN

REMOVE EXISTING SIGN

REMOVE EXISTING CHAIN LINK FENCE TO NEAREST POST, INCLUDING CONCRETE FOOTINGS, COORDINATE WITH LOCATION OF NEW FENCE

■

EXISTING BUILDING

■

EXISTING AREA NOT IN SCOPE OF WORK

■

EXISTING LIGHT DUTY ASPHALT PAVING TO REMAIN

■

EXISTING CONCRETE WALK TO REMAIN

■

REMOVE EXISTING ASPHALT PAVING INCLUDING GRANULAR BASE

■

REMOVE EXISTING LANDSCAPING ROCKS INCLUDING GRANULAR BASE

■

REMOVE CRUSHED STONE PATHWAY

○

CORNER TRIANGLE REQUIREMENT BY OFFICIAL PLAN

○

REMOVE OR TRANSPLANT EXISTING TREES (REFER TO LANDSCAPE)

○

REMOVE EXISTING SHRUB (REFER TO LANDSCAPE)

○

REMOVE EXISTING BOULDERS (REFER TO LANDSCAPE)

○

EXISTING TREES TO REMAIN (REFER TO LANDSCAPE)

○

EXISTING SHRUB TO REMAIN (REFER TO LANDSCAPE)

CONSTRUCTION PHASE NOTES

1

USE EXISTING DRIVEWAY AS CONSTRUCTION SITE ENTRANCE

2

CONSTRUCTION FENCE 1800mm HIGH WITH FULL HEIGHT WINDSCREEN PRIVACY BLACK MESH

3

REMOVE EXISTING FENCE AND GATE

4

GARBAGE ENCLOSURE TO BE UTILIZED BY SCHOOL STAFF DURING CONSTRUCTION. REMOVE EXISTING GARBAGE ENCLOSURE INCLUDING CONCRETE FOOTINGS.

5

ALL SITE WORK OUTSIDE OF CONSTRUCTION ZONE TO BE COMPLETED DURING SUMMER 2026

6

EXISTING FIRE ROUTE SHALL BE MAINTAINED FOR THE DURATION OF CONSTRUCTION

7

RELOCATED EXISTING PORTABLES UTILIZED DURING CONSTRUCTION. - TO BE INSTALLED BY OWNER AND REMOVED AT COMPLETION OF CONSTRUCTION. (NLC.)

8

EXISTING EMERGENCY GENERATOR TO REMAIN. PROVIDE OVERHEAD AND SIDE PROTECTION ON ALL SIDES DURING CONSTRUCTION.

9

EXISTING TRANSFORMER CONCRETE BUNKER FOR THE PORTABLES. REMOVE AT COMPLETION OF BUILDING ADDITION. PROVIDE PROTECTION DURING CONSTRUCTION.

10

1200mm HIGH NEW CHAIN LINK FENCE. PERMANENT INSTALLATION -SEE A021

11

BLOCK EXISTING DOOR AND REMOVE EXISTING EXIT SIGN ABOVE DOOR. PLACE "NO EXIT" SIGN DURING CONSTRUCTION

12

REMOVE EXISTING WINDOW AND PROVIDE EMERGENCY EXIT DOOR DURING CONSTRUCTION. SEE ARCHITECTURAL DETAILS.

13

BLOCK EXISTING DOOR. PLACE "NO EXIT" SIGN DURING CONSTRUCTION

14

PROVIDE TEMPORARY HOARDING COMPLETE WITH 3/4" HR FIRE-RATED HOLLOW METAL DOOR AND FRAME UNTIL OCCUPANCY ACHIEVED. PROVIDE SELF-CLOSING DEVICE AND PANIC HARDWARE. WALL IS TO EXTEND TO UNDERSIDE OF ROOF DECK.
1-HR FIRE RATED WALL ASSEMBLY:
• 16 ABUSE RESISTANT GYPSUM BOARD ON BOTH SIDES
• 92 STUD FRAMING
• FILL STUD CAVITIES WITH SOUND ATTENUATION BATT. FILL GAP BETWEEN TOP STUD AND EXISTING CEILING WITH SOUND ATTENUATION BATT AND FIRE STOPPING.

15

PROVIDE TEMPORARY DIRECTIONAL EXIT SIGN TO ROOM 196.

16

1200mm WIDE PEDESTRIAN ACCESS GATE DURING CONSTRUCTION FOR STUDENTS AND PARENTS.

17

COMPACTED GRAVEL PATH

18

TEMPORARY CONSTRUCTION PHASE EXIT PATH OF TRAVEL

19

REMOVE AND RELOCATE EXISTING CONCRETE BUNKER INCLUDING CONCRETE BASE AND/OR SLAB. RELOCATE FROM EXISTING COURTYARD TO OUTSIDE OF CONSTRUCTION FENCE. INSTALL ON 300mm DEEP GRANULAR A PAD.

20

PROTECT EXISTING WINDOWS WITH 2-16 GYPSUM BOARD ON 64 STUDS. FILL CAVITY WITH SEMI-RIGID INSULATION FOR SOUND ATTENUATION.

21

NOT USED

22

6000mm CONSTRUCTION ACCESS GATE

23

EXISTING PORTABLE CLASSROOMS FOR THE DURATION OF CONSTRUCTION. - TO BE REMOVED AT COMPLETION OF CONSTRUCTION.

24

EXISTING PORTABLE CLASSROOM WILL BE RELOCATED BY OWNER PRIOR TO CONSTRUCTION.

25

CAREFULLY REMOVE EXISTING PLAY STRUCTURE, DISMANTLE AND STORE IN SAFE PLACE FOR RELOCATION. DEMOLISH DURING CONSTRUCTION PHASE 1 - SUMMER 2026.

26

CAREFULLY REMOVE EXISTING PLAY STRUCTURE, DISMANTLE AND STORE IN SAFE PLACE FOR RELOCATION. DEMOLISH DURING CONSTRUCTION PHASE 3 - SUMMER 2026.

APPROVED

By Allison Hamlin at 5:03 pm, Sep 15, 2025

ALLISON HAMLIN

MANAGER, DEVELOPMENT REVIEW ALL WARDS

PLANNING, DEVELOPMENT & BUILDING SERVICES

DEPARTMENT, CITY OF OTTAWA

OTTAWA CATHOLIC SCHOOL BOARD

2025/05/20 ISSUED FOR SITE PLAN CONTROL APPLICATION

2025/03/10 ISSUED FOR 1ST REVIEW COMMENTS RESPONSE

ISSUE NO. REV. NO. DATE BY/ISSUED

LES IDEES, CONCEPTS, DISPOSITIONS ET PLANS MONTRES OU REPRESENTES PAR CE DESSIN APPARTIENNENT A EDWARD J. CUHACI AND ASSOCIATES ARCHITECTS INC. ET ONT ETE CRES ET DEVELOPPES POUR ETRE UTILISES DANS LE CADRE DU PRESENT PROJET. ILS NE DOIVENT PAS ETRE UTILISES A D'AUTRES FINS NI COMMUNIQUEES A QUI QUE CE SOIT SANS LA PERMISSION ECRITE DE EDWARD J. CUHACI AND ASSOCIATES ARCHITECTS INC.

L'ARCHITECTE DECLINE TOUTE RESPONSABILITE DECOULANT DE PROBLEMES FAISANT SUITE AU NON-RESPECT DES PLANS ET DEVIS OU DE L'INTENTION DU CONCEPT QU'ILS TRANSMETTENT OU DE TOUTS PROBLEMES POUVANT RESULTER DU DEFAUT DE TIERS D'OBTENIR OU DE SUIVRE LES INSTRUCTIONS DE L'ARCHITECTE RELATIVEMENT AUX ERREURS, OMISSIONS, INCOHERENCES, AMBIGUITES OU CONTRADICTIONS ALLEGUEES.

L'ENTREPRENEUR DOIT VERIFIER TOUTES LES DIMENSIONS SUR PLACE ET INFORMER L'ARCHITECTE DE TOUT ECART AVANT LE DEBUT DES TRAVAUX. NE PAS MESURER LES DESSINS A L'ECHELLE.

ALL IDEAS, DESIGNS, ARRANGEMENTS, AND PLANS INDICATED OR REPRESENTED BY THIS DRAWING ARE OWNED BY AND THE PROPERTY OF EDWARD J. CUHACI AND ASSOCIATES INC. AND WERE CREATED, EVOLVED, AND DEVELOPED FOR USE ON AND IN CONNECTION WITH THE SPECIFIED PROJECT. NONE OF THE IDEAS, DESIGNS, ARRANGEMENTS OR PLANS SHALL BE USED BY OR DISCLOSED TO ANY PERSON, FIRM, OR CORPORATION FOR ANY PURPOSE WHATSOEVER WITHOUT THE WRITTEN PERMISSION OF EDWARD J. CUHACI AND ASSOCIATES INC.

THE ARCHITECT WAIVES ANY AND ALL RESPONSIBILITY AND LIABILITY FOR PROBLEMS WHICH ARISE FROM FAILURE TO FOLLOW THESE PLANS, SPECIFICATIONS, AND THE DESIGN INTENT THEY CONVEY, OR FOR PROBLEMS WHICH ARISE FROM OTHERS' FAILURE TO OBTAIN AND/OR FOLLOW THE ARCHITECT'S GUIDANCE WITH RESPECT TO ANY ERRORS, OMISSIONS, INCONSISTENCIES, AMBIGUITIES OR CONFLICTS WHICH ARE ALLEGED.

CONTRACTOR TO VERIFY ALL DIMENSIONS AND NOTIFY THE ARCHITECT OF ANY DISCREPANCIES BEFORE WORK COMMENCES. DO NOT SCALE DRAWINGS

TRUE NORTH

PLAN NORTH

ONTARIO ASSOCIATION OF ARCHITECTS

JERRY CUHACI

6193

EDWARD J. CUHACI & ASSOCIATES ARCHITECTS INC.

171 Slater St, Suite 100, Ottawa, Ontario, K1P 5H7

Fax: (613) 238-1944 Telephone: (613) 238-7135 E-mail: info@cuhaci.com

PROJECT TITLE/TITRE DU PROJET

ST. PHILIP CATHOLIC SCHOOL ADDITION 2025

79 MAITLAND STREET S, RICHMOND, ON, K0A 2Z0

OTTAWA CATHOLIC SCHOOL BOARD

570 WEST HUNT CLUB ROAD

OTTAWA, ONTARIO, K2G 3R4

DRAWING TITLE/TITRE DU DESSIN

CONSTRUCTION PHASE SITE PLAN

SCALE

ECHELLE

DRAWN BY

DESSINE PAR

CHECKED BY

VERIFIE PAR

DATE

2025

PROJ. No

ISSUE No

REV. No

2501

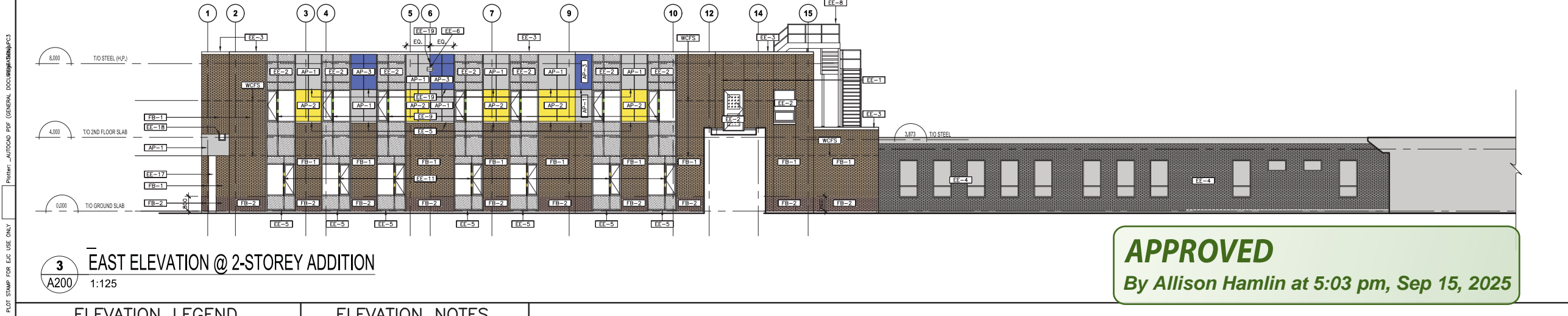
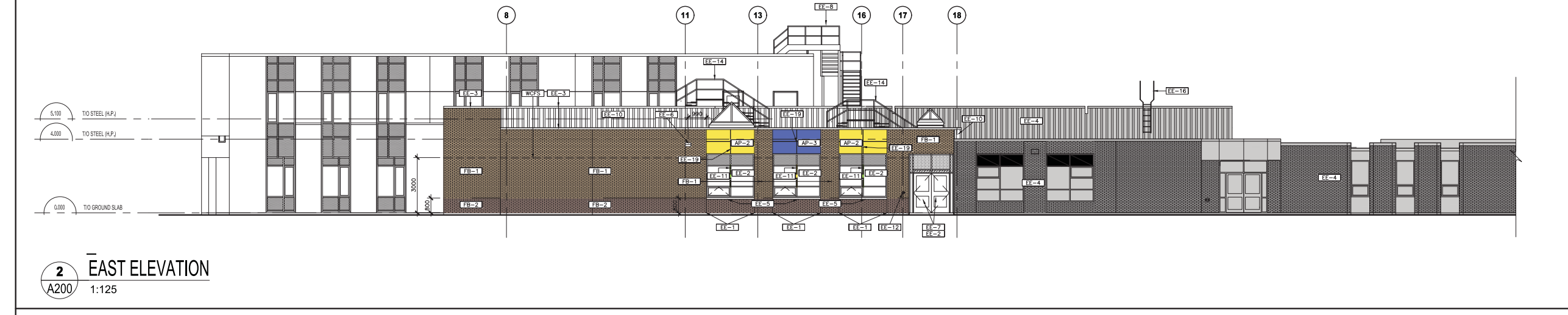
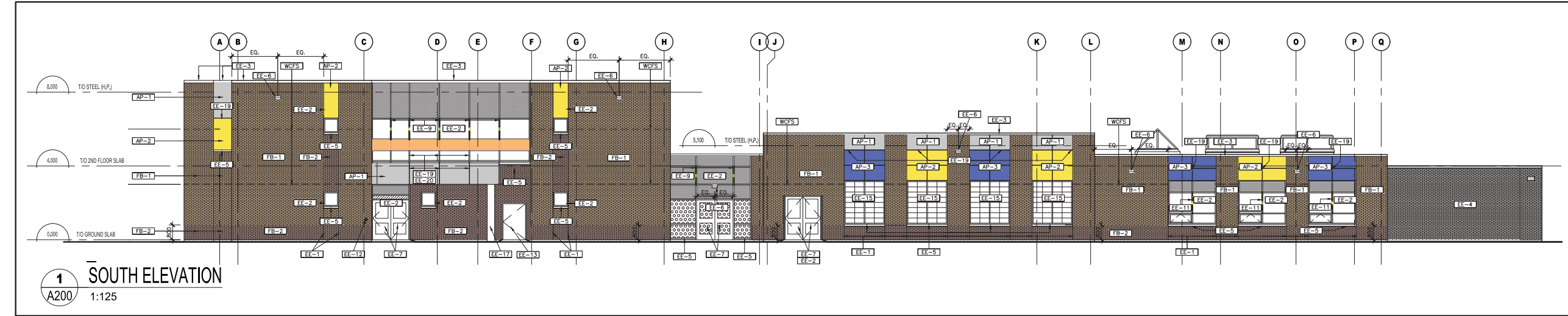
1

0

DRAWING/DESSIN

A022

FICHIER ACAD FILE: 2501-A022 SPC.dwg



ELEVATION LEGEND	ELEVATION NOTES
	WCFS WALL CAVITY FIRE STOP
	EE-1 MASONRY CONTROL JOINT
	EE-2 CURTAIN WALL SYSTEM, REFER TO WINDOW SCHEDULE
	EE-3 PRE-FINISHED METAL CAP FLASHING
	EE-4 EXISTING BUILDING
	EE-5 TYPICAL 2MM BRAKE FORMED ALUMINUM SILL FLASHING
	EE-6 EXTERIOR WALL MOUNTED LIGHT FIXTURE, REFER TO ELECTRICAL
	EE-7 ALUMINUM SWING DOOR
	EE-8 ROOF ACCESS STAIR, HOT DIP GALVANIZED
	EE-9 75mm DEEP EXTRUDED ALUMINUM EXTENSION CURTAIN WALL CAP, CUSTOM COLOURS
	EE-10 PRE-FINISHED METAL SIDING - VERTICAL INSTALLATION
	EE-11 32mm DEEP EXTRUDED ALUMINUM CURTAIN WALL CAP, CUSTOM COLOURS
	EE-12 AUTOMATIC DOOR OPERATOR (ADO)
	EE-13 PRESSED HOLLOW METAL DOOR AND FRAME
	EE-14 ROOF CROSSOVER STAIR, HOT DIP GALVANIZED
	EE-15 KALWALL PANEL SYSTEM, REFER TO SPECIFICATIONS
	EE-16 EXISTING ROOF ACCESS LADDER TO REMAIN
	EE-17 CONCRETE COLUMN, SMOOTH FINISH
	EE-18 ROOF OVERFLOW SCUPPER
	EE-19 COMPOSITE ALUMINUM PANEL REVEAL
	EE-20 ALIGN COMPOSITE ALUMINUM PANEL REVEAL TO CENTER OF CURTAIN WALL MULLION

APPROVED
By Allison Hamlin at 5:03 pm, Sep 15, 2025

A Hamlin

ALLISON HAMLIN
MANAGER , DEVELOPMENT REVIEW ALL WARDS
PLANNING, DEVELOPMENT & BUILDING SERVICES
DEPARTMENT, CITY OF OTTAWA

OTTAWA CATHOLIC SCHOOL BOARD

2	0	2025/05/20	ISSUED FOR SITE PLAN CONTROL APPLICATION
1	0	2025/03/10	ISSUED FOR 1ST REVIEW COMMENTS RESPONSE

ISSUE NO.	REV. NO.	DATE	ISSUE
2	0	2025/05/20	LES IDÉES, CONCEPTS, DISPOSITIONS ET PLANS MONTRÉS OU REPRÉSENTÉS PAR CE DESSIN APPARTIENNENT À EDWARD J. CUHACI AND ASSOCIATES ARCHITECTS INC. ET ONT ÉTÉ CRÉÉS ET DÉVELOPPÉS POUR ÊTRE UTILISÉS DANS LE CADRE DU PRÉSENT PROJET. ILS NE DOIVENT PAS ÊTRE UTILISÉS À D'AUTRES FINS NI COMMUNIQUÉS À QUI QUE CE SOIT SANS LA PERMISSION ÉCRITE DE EDWARD J. CUHACI AND ASSOCIATES ARCHITECTS INC.
1	0	2025/03/10	L'ARCHITECTE DÉCLINE TOUTE RESPONSABILITÉ DÉCOULANT DE PROBLÈMES FAISANT SUITE AU NON-RESPECT DES PLANS ET DEVIS OU DE L'INTENTION DU CONCEPT QU'ILS TRANSMETTENT OU DE TOUTS PROBLÈMES POUVANT RÉSULTER DU DÉFAUT DE TIERS D'OBTENIR OU DE SUIVRE LES INSTRUCTIONS DE L'ARCHITECTE RELATIVEMENT AUX ERREURS, OMISSIONS, INCOHÉRENCES, AMBIGUITÉS OU CONTRADICTIONS ALLÉGUÉES.
1	0	2025/03/10	L'ENTREPRENEUR DOIT VÉRIFIER TOUTES LES DIMENSIONS SUR PLACE ET INFORMER L'ARCHITECTE DE TOUT ÉCART AVANT LE DÉBUT DES TRAVAUX. NE PAS MESURER LES DESSINS À L'ÉCHELLE.
1	0	2025/03/10	ALL IDEAS, DESIGNS, ARRANGEMENTS, AND PLANS INDICATED OR REPRESENTED BY THIS DRAWING ARE OWNED BY AND THE PROPERTY OF EDWARD J. CUHACI AND ASSOCIATES INC. AND WERE CREATED, EVOLVED, AND DEVELOPED FOR USE ON AND IN CONNECTION WITH THE SPECIFIED PROJECT. NONE OF THE IDEAS, DESIGNS, ARRANGEMENTS OR PLANS SHALL BE USED BY OR DISCLOSED TO ANY PERSON, FIRM, OR CORPORATION FOR ANY PURPOSE WHATSOEVER WITHOUT THE WRITTEN PERMISSION OF EDWARD J. CUHACI AND ASSOCIATES INC.
1	0	2025/03/10	THE ARCHITECT WAIVES ANY AND ALL RESPONSIBILITY AND LIABILITY FOR PROBLEMS WHICH ARISE FROM FAILURE TO FOLLOW THESE PLANS, SPECIFICATIONS, AND THE DESIGN INTENT THEY CONVEY, OR FOR PROBLEMS WHICH ARISE FROM OTHERS' FAILURE TO OBTAIN AND/OR FOLLOW THE ARCHITECT'S GUIDANCE WITH RESPECT TO ANY ERRORS, OMISSIONS, INCONSISTENCIES, AMBIGUITIES OR CONFLICTS WHICH ARE ALLEGED.
1	0	2025/03/10	CONTRACTOR TO VERIFY ALL DIMENSIONS AND NOTIFY THE ARCHITECT OF ANY DISCREPANCIES BEFORE WORK COMMENCES. DO NOT SCALE DRAWINGS

ONTARIO ASSOCIATION OF ARCHITECTS
JERZY KUCHARCZAK
6193

ST. PHILIP CATHOLIC SCHOOL
ADDITION 2025
79 MATLAND STREET S, RICHMOND, ON, K0A 2Z0

OTTAWA CATHOLIC SCHOOL BOARD
570 WEST HUNT CLUB ROAD
OTTAWA, ONTARIO, K2G 3R4

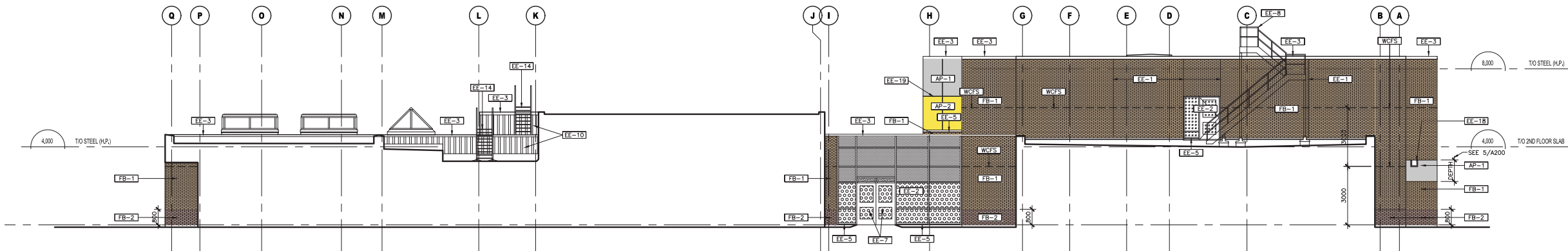
SCALE	PROJ. No	ISSUE No	REV. No
ECHÉLLE	-	2501	1

DRAWN BY DESSINÉ PAR	S.J.	DRAWING/DESSIN
CHECKED BY VÉRIFIÉ PAR	J.J.	
DATE	2025	

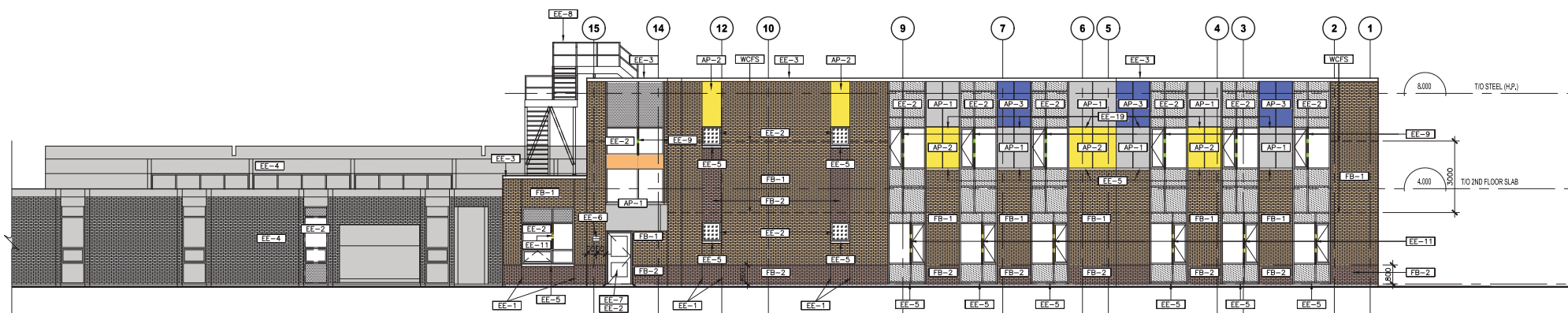
A200

FICHIER ACAD FILE: 2501-A200 SPC.dwg

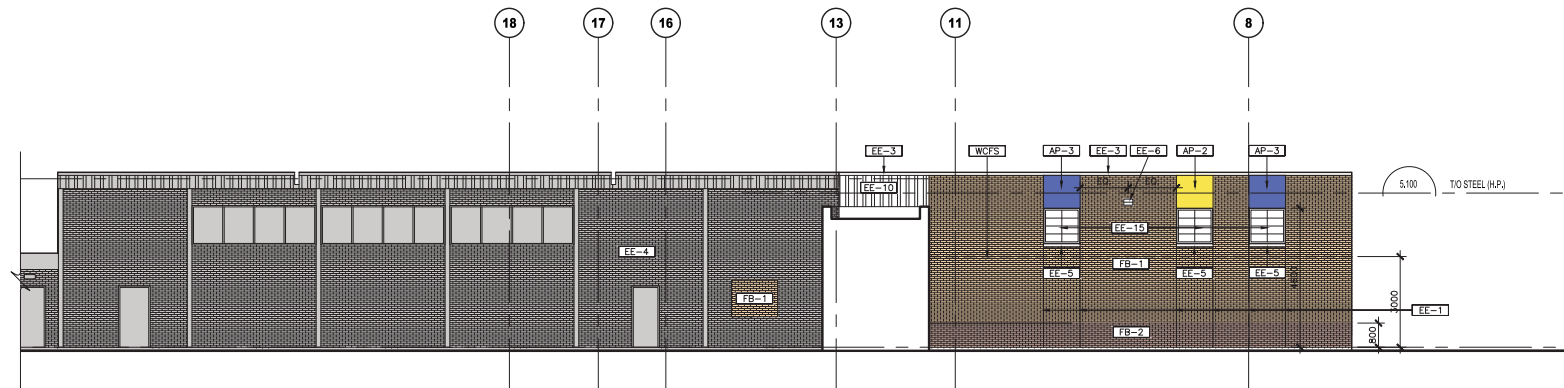
Plot Date: 2022-06-27 Plot Time: 15:04:03 Plot By: SGNAL JUN Plot Stamp For EAC Use Only Plotter: AUTOCAD PDF (GENERAL DOCUMENT) 100x100



1 NORTH ELEVATION @ 2-STOREY ADDITION
A201 1:125

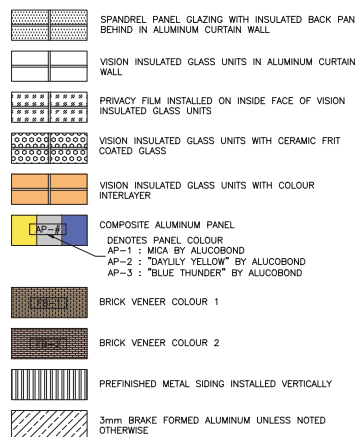


2 WEST ELEVATION
A201 1:125



3 WEST ELEVATION @ MULTI PURPOSE ROOM
A201 1:125

ELEVATION LEGEND



ELEVATION NOTES

WCFS	WALL CAVITY FIRE STOP
EE-1	MASONRY CONTROL JOINT
EE-2	CURTAIN WALL SYSTEM, REFER TO WINDOW SCHEDULE
EE-3	PRE-FINISHED METAL CAP FLASHING
EE-4	EXISTING BUILDING
EE-5	TYPICAL 2MM BRAKE FORMED ALUMINUM SILL FLASHING
EE-6	EXTERIOR WALL MOUNTED LIGHT FIXTURE, REFER TO ELECTRICAL
EE-7	ALUMINUM SWING DOOR
EE-8	ROOF ACCESS STAIR, HOT DIP GALVANIZED
EE-9	75mm DEEP EXTRUDED ALUMINUM EXTENSION CURTAIN WALL CAP, CUSTOM COLOURS
EE-10	PRE-FINISHED METAL SIDING - VERTICAL INSTALLATION
EE-11	32mm DEEP EXTRUDED ALUMINUM CURTAIN WALL CAP, CUSTOM COLOURS
EE-12	AUTOMATIC DOOR OPERATOR (ADO)
EE-13	PRESSED HOLLOW METAL DOOR AND FRAME
EE-14	ROOF CROSSOVER STAIR, HOT DIP GALVANIZED
EE-15	KALWALL PANEL SYSTEM, REFER TO SPECIFICATIONS
EE-16	EXISTING ROOF ACCESS LADDER TO REMAIN
EE-17	CONCRETE COLUMN, SMOOTH FINISH
EE-18	ROOF OVERFLOW SCUPPER
EE-19	COMPOSITE ALUMINUM PANEL REVEAL
EE-20	ALIGN COMPOSITE ALUMINUM PANEL REVEAL TO CENTER OF CURTAIN WALL MULLION

APPROVED

By Allison Hamlin at 5:03 pm, Sep 15, 2025

A Hamlin

ALLISON HAMLIN
MANAGER , DEVELOPMENT REVIEW ALL WARDS
PLANNING, DEVELOPMENT & BUILDING SERVICES
DEPARTMENT, CITY OF OTTAWA



**OTTAWA
CATHOLIC
SCHOOL BOARD**

2	0	2025/05/20	ISSUED FOR SITE PLAN CONTROL APPLICATION
1	0	2025/03/10	ISSUED FOR 1ST REVIEW COMMENTS RESPONSE

ISSUE NO.	REV. NO.	DATE	ISSUE
-----------	----------	------	-------

LES IDÉES, CONCEPTS, DISPOSITIONS ET PLANS MONTRÉS OU REPRÉSENTÉS PAR CE DESSIN APPARTIENNENT À EDWARD J. CUHACI AND ASSOCIATES ARCHITECTS INC. ET ONT ÉTÉ CRÉÉS ET DÉVELOPPÉS POUR ÊTRE UTILISÉS DANS LE CADRE DU PRÉSENT PROJET. ILS NE DOIVENT PAS ÊTRE UTILISÉS À D'AUTRES FINS NI COMMUNIQUÉS À QUI QUE CE SOIT SANS LA PERMISSION ÉCRITE DE EDWARD J. CUHACI AND ASSOCIATES ARCHITECTS INC.

L'ARCHITECTE DÉCLINE TOUTE RESPONSABILITÉ DÉCOULANT DE PROBLÈMES FAISANT SUITE AU NON-RESPECT DES PLANS ET DEVIS OU DE L'INTENTION DU CONCEPT QU'ILS TRANSMETTENT OU DE TOUTS PROBLÈMES POUVANT RÉSULTER DU DÉFAUT DE TIERS D'OBTENIR OU DE SUIVRE LES INSTRUCTIONS DE L'ARCHITECTE RELATIVEMENT AUX ERREURS, OMISSIONS, INCOHÉRENCES, AMBIGUITÉS OU CONTRADICTIONS ALLÉGUÉES.

L'ENTREPRENEUR DOIT VÉRIFIER TOUTES LES DIMENSIONS SUR PLACE ET INFORMER L'ARCHITECTE DE TOUT ÉCART AVANT LE DÉBUT DES TRAVAUX. NE PAS MESURER LES DESSINS À L'ÉCHELLE.

ALL IDEAS, DESIGNS, ARRANGEMENTS, AND PLANS INDICATED OR REPRESENTED BY THIS DRAWING ARE OWNED BY AND THE PROPERTY OF EDWARD J. CUHACI AND ASSOCIATES INC. AND WERE CREATED, EVOLVED, AND DEVELOPED FOR USE ON AND IN CONNECTION WITH THE SPECIFIED PROJECT. NONE OF THE IDEAS, DESIGNS, ARRANGEMENTS OR PLANS SHALL BE USED BY OR DISCLOSED TO ANY PERSON, FIRM, OR CORPORATION FOR ANY PURPOSE WHATSOEVER WITHOUT THE WRITTEN PERMISSION OF EDWARD J. CUHACI AND ASSOCIATES INC.

THE ARCHITECT WAIVES ANY AND ALL RESPONSIBILITY AND LIABILITY FOR PROBLEMS WHICH ARISE FROM FAILURE TO FOLLOW THESE PLANS, SPECIFICATIONS, AND THE DESIGN INTENT THEY CONVEY, OR FOR PROBLEMS WHICH ARISE FROM OTHERS' FAILURE TO OBTAIN AND/OR FOLLOW THE ARCHITECT'S GUIDANCE WITH RESPECT TO ANY ERRORS, OMISSIONS, INCONSISTENCIES, AMBIGUITIES OR CONFLICTS WHICH ARE ALLEGED.

CONTRACTOR TO VERIFY ALL DIMENSIONS AND NOTIFY THE ARCHITECT OF ANY DISCREPANCIES BEFORE WORK COMMENCES. DO NOT SCALE DRAWINGS



**EDWARD J. CUHACI
& ASSOCIATES ARCHITECTS Inc.**

171 Slater St., Suite 100, Ottawa, Ontario, K1P 5H7
Fax: (613) 238-1944 Telephone: (613) 238-7135 E-mail: info@cuhaci.com

PROJECT TITLE/TITRE DU PROJET
**ST. PHILIP CATHOLIC SCHOOL
ADDITION 2025**
79 MATLAND STREET S, RICHMOND, ON, K0A 2Z0

OTTAWA CATHOLIC SCHOOL BOARD
570 WEST HUNT CLUB ROAD
OTTAWA, ONTARIO, K2G 3R4

DRAWING TITLE/TITRE DU DESSIN

BUILDING ELEVATIONS

SCALE ÉCHELLE	PROJ. No 2501	ISSUE No 1	REV. No 0
------------------	------------------	---------------	--------------

DRAWN BY
DESSINÉ PAR S.J.

CHECKED BY
VÉRIFIÉ PAR J.J.

DATE 2025

A201

FICHIER ACAD FILE: 2501-A201-SPC.dwg