

PLAN OF SURVEY OF
PART OF BLOCK 5
REGISTERED PLAN 4M-1388 AND
PART OF LOT 26
CONCESSION 6 (RIDEAU FRONT)
GEOGRAPHIC TOWNSHIP OF GLOUCESTER
CITY OF OTTAWA
 Prepared by Annis, O'Sullivan, Vollebek Ltd.

Scale 1:400

Metric
 DISTANCES SHOWN ON THIS PLAN ARE IN METRES AND
 CAN BE CONVERTED TO FEET BY DIVIDING BY 0.3048

Notes & Legend

| Symbol | Description |
|--------|----------------------------------|
| —○— | Survey Monument Planted |
| —■— | Survey Monument Found |
| —SB— | Standard Iron Bar |
| —SSB— | Short Standard Iron Bar |
| —IB— | Iron Bar |
| —C/— | Calculated per |
| —(MT)— | Measured |
| —MOS— | Measured |
| —(AO)— | Annis, O'Sullivan, Vollebek Ltd. |
| —(RP)— | Registered Plan 4M-1388 |
| —(P)— | Plan 4M-23406 |
| —(P2)— | Plan 4M-23865 |
| —OW— | Overhead Wires |
| —UP— | Utility Pole |
| —A— | Anchor |
| —LS— | Light Standard |
| —CSP— | Corrugated Steel Pipe |
| —SP— | Water Stand Post |
| —I— | Invert |
| —TUP— | Top of Pipe |
| —GV— | Gas Valve |
| —UB— | Unidentified Terminal Box |
| —B— | Bolted |
| —G— | Gate |
| —B— | Borehole |
| —T— | Test Pit |
| —W— | Well Cap |
| —D— | Diameter |
| —L— | Location of Elevations |
| —CL— | Centreline |

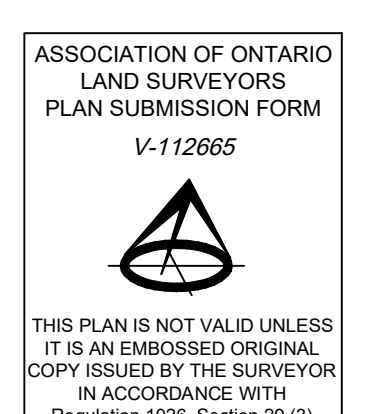
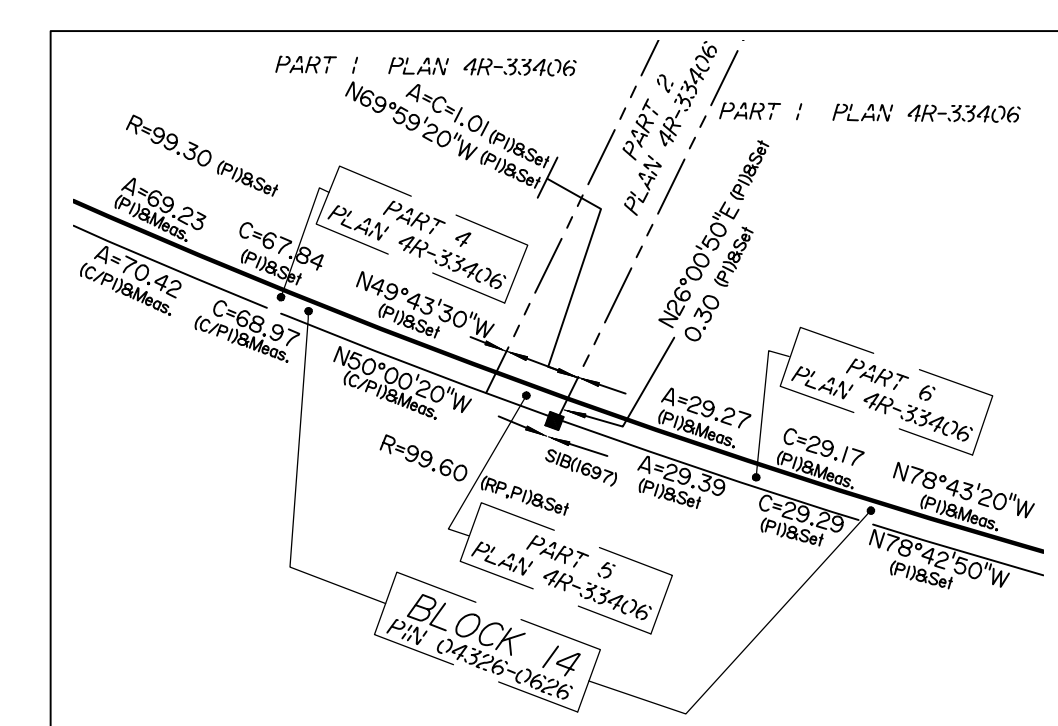
Distances shown on this plan are ground distances and can be converted to grid distances by multiplying by the combined scale factor of 0.99994.

Bearings are grid, derived from Can-Net 2016 Real Time Network GPS observations, MTM Zone 9 (79°30' West Longitude) NAD-83 (CSRS2015).

Surveyor's Certificate

I CERTIFY THAT
 1. This survey and plan are correct and in accordance with the Survey Act, the Surveyors Act and the Land Titles Act and the regulations made under them.
 2. The survey was completed on the 22nd day of July, 2025.

August 12, 2025
 Date
 Ernie Kishnum
 Ontario Land Surveyor



ASSOCIATION OF ONTARIO
 LAND SURVEYORS
 PLAN SUBMISSION FORM
 K-112665

THIS PLAN IS NOT VALID UNLESS
 IT IS AN UNREVOKED ORIGINAL
 COPY ISSUED BY THE SURVEYOR
 IN ACCORDANCE WITH
 REGULATION 1035, SECTION 29 (1)

ELEVATION NOTES
 1. Elevations shown are geoidal and are referred to the CGVD28 geoidal datum.
 2. It is the responsibility of the user of this information to verify that the job benchmark has not been altered or disturbed and that its relative elevation and description agrees with the information shown on this drawing.

UTILITY NOTES
 1. This drawing cannot be accepted as acknowledging all of the utilities and it will be the responsibility of the user to contact the respective utility authorities for confirmation.
 2. A field location of underground plant by the pertinent utility authority is mandatory before any work involving breaking ground, probing, excavating etc.

© Annis, O'Sullivan, Vollebek Ltd. 2025. THIS PLAN IS PROTECTED BY COPYRIGHT.
ANNIS, O'SULLIVAN, VOLLEBEK LTD.
 113 Prescott Street, Box 1340
 Kemptville, Ontario K0G 1A0
 Phone: (613) 258-1717
 Fax: (613) 258-1718
 Email: annis@anniss.com