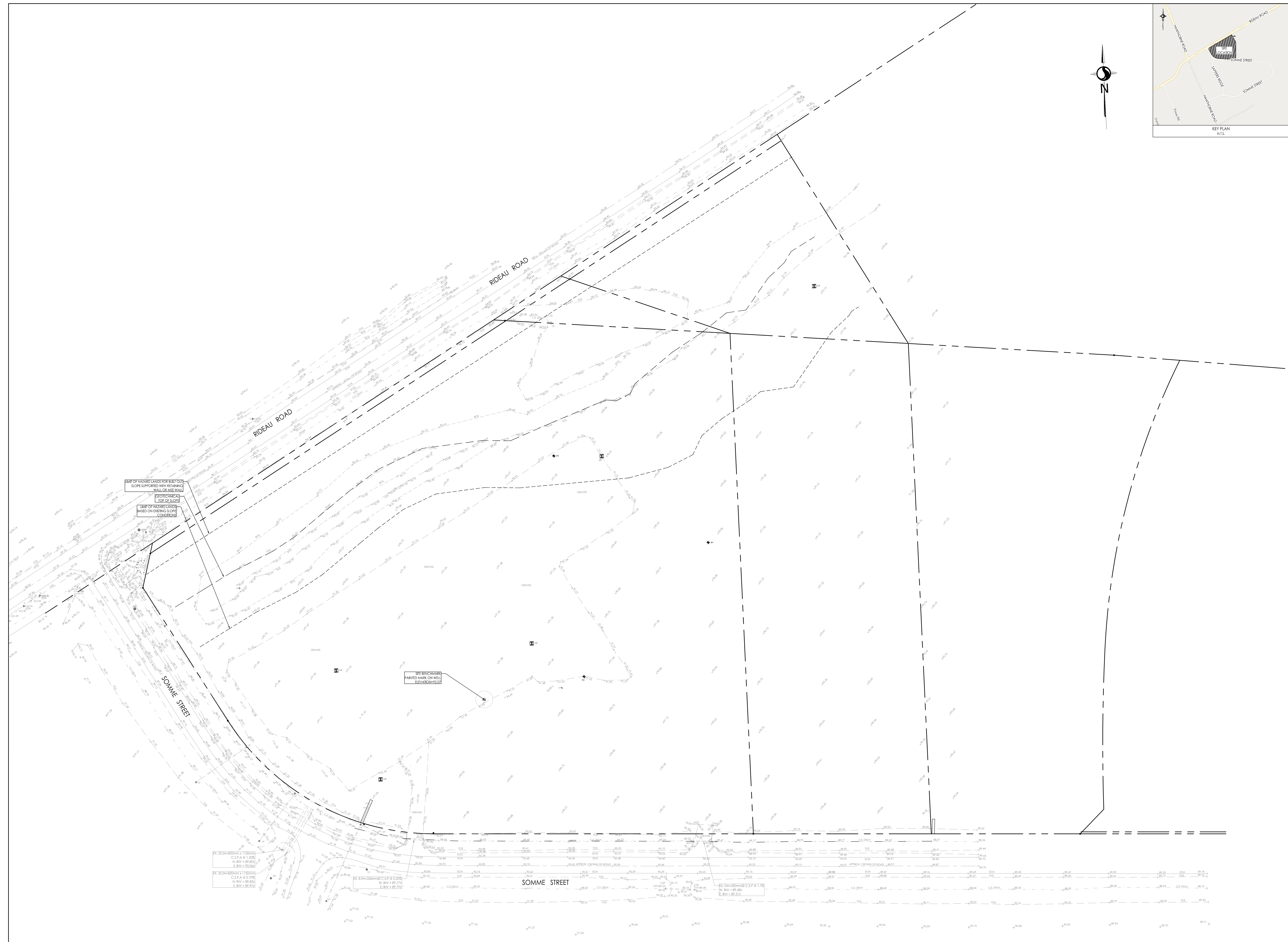
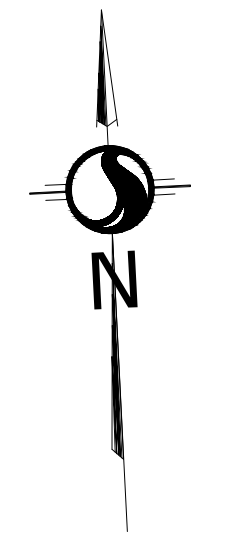
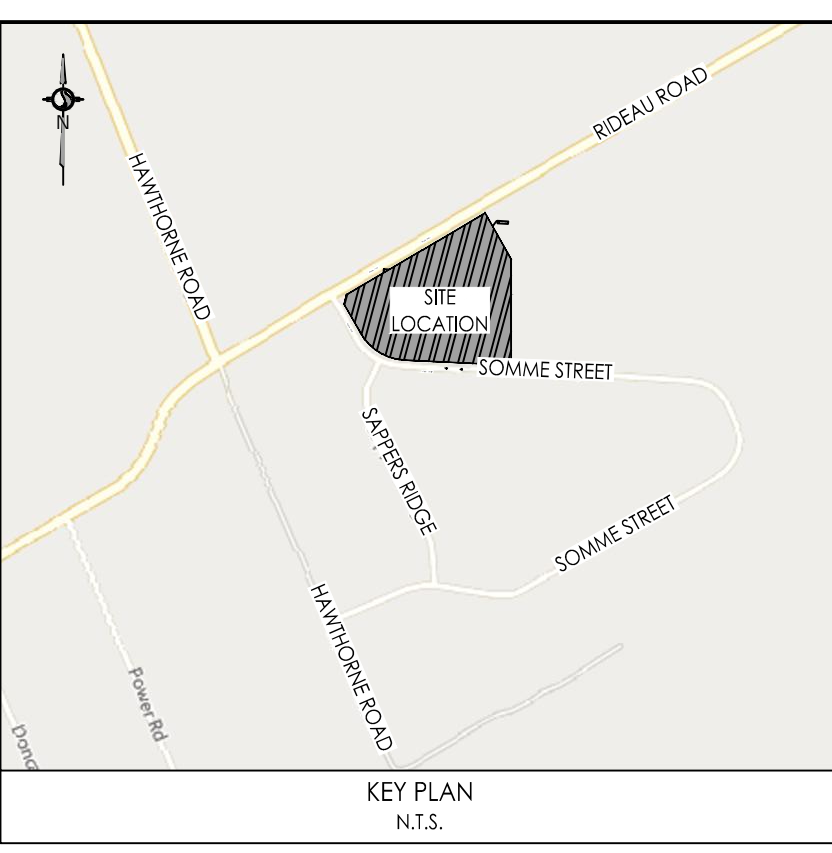


**Legend**

	EXISTING GROUND ELEVATION
	EXISTING WATERMAIN
	EXISTING VALVE AND VALVE BOX
	EXISTING VALVE CHAMBER
	EXISTING REDUCER
	EXISTING FIRE HYDRANT
	EXISTING SANITARY RISER AND SEWER
	EXISTING STORM RISER AND SEWER
	EXISTING CATCHBASIN MANHOLE
	EXISTING CATCHBASIN
	EXISTING GASMAIN
	EXISTING BELL LINE
	EXISTING ROGERS
	EXISTING OVERHEAD WIRES
	EXISTING UNDERGROUND HYDRO

**Notes**



LINE OF PROPOSED STAIRS FOR BELLY CREEK  
SCOPE SUPPORTED WITH RETAINING WALL OR REEF PILING  
PROPOSED TOP OF SLOPE  
LINE OF PROPOSED STAIRS  
BASED ON EXISTING SCENE  
CONDITIONS

SITE BENCHMARK  
PAINTED MARK ON WALL  
BEYOND PROPERTY

EX 2019-001-1130-001  
C.L.P.A. 1.1000  
N. INV. - 89.820  
I. INV. - 89.820

EX 2019-001-1130-001  
C.L.P.A. 0.1000  
N. INV. - 89.830  
I. INV. - 89.830

EX 2019-001-1130-001  
C.L.P.A. 0.1000  
N. INV. - 89.770  
E. INV. - 89.770

EX 2019-001-1130-001  
C.L.P.A. 1.1000  
N. INV. - 89.460  
E. INV. - 89.310

Revision	By	App'd	Date
0	MS	PM	25.08.22
1	MS	App'd	25.08.22
2	MS	App'd	25.08.22
3	MS	App'd	25.08.22
4	MS	App'd	25.08.22
5	MS	App'd	25.08.22
6	MS	App'd	25.08.22
7	MS	App'd	25.08.22
8	MS	App'd	25.08.22
9	MS	App'd	25.08.22
10	MS	App'd	25.08.22
11	MS	App'd	25.08.22
12	MS	App'd	25.08.22
13	MS	App'd	25.08.22
14	MS	App'd	25.08.22
15	MS	App'd	25.08.22
16	MS	App'd	25.08.22
17	MS	App'd	25.08.22
18	MS	App'd	25.08.22
19	MS	App'd	25.08.22
20	MS	App'd	25.08.22
21	MS	App'd	25.08.22
22	MS	App'd	25.08.22
23	MS	App'd	25.08.22
24	MS	App'd	25.08.22
25	MS	App'd	25.08.22
26	MS	App'd	25.08.22
27	MS	App'd	25.08.22
28	MS	App'd	25.08.22
29	MS	App'd	25.08.22
30	MS	App'd	25.08.22
31	MS	App'd	25.08.22
32	MS	App'd	25.08.22
33	MS	App'd	25.08.22
34	MS	App'd	25.08.22
35	MS	App'd	25.08.22
36	MS	App'd	25.08.22
37	MS	App'd	25.08.22
38	MS	App'd	25.08.22
39	MS	App'd	25.08.22
40	MS	App'd	25.08.22
41	MS	App'd	25.08.22
42	MS	App'd	25.08.22
43	MS	App'd	25.08.22
44	MS	App'd	25.08.22
45	MS	App'd	25.08.22
46	MS	App'd	25.08.22
47	MS	App'd	25.08.22
48	MS	App'd	25.08.22
49	MS	App'd	25.08.22
50	MS	App'd	25.08.22
51	MS	App'd	25.08.22
52	MS	App'd	25.08.22
53	MS	App'd	25.08.22
54	MS	App'd	25.08.22
55	MS	App'd	25.08.22
56	MS	App'd	25.08.22
57	MS	App'd	25.08.22
58	MS	App'd	25.08.22
59	MS	App'd	25.08.22
60	MS	App'd	25.08.22
61	MS	App'd	25.08.22
62	MS	App'd	25.08.22
63	MS	App'd	25.08.22
64	MS	App'd	25.08.22
65	MS	App'd	25.08.22
66	MS	App'd	25.08.22
67	MS	App'd	25.08.22
68	MS	App'd	25.08.22
69	MS	App'd	25.08.22
70	MS	App'd	25.08.22
71	MS	App'd	25.08.22
72	MS	App'd	25.08.22
73	MS	App'd	25.08.22
74	MS	App'd	25.08.22
75	MS	App'd	25.08.22
76	MS	App'd	25.08.22
77	MS	App'd	25.08.22
78	MS	App'd	25.08.22
79	MS	App'd	25.08.22
80	MS	App'd	25.08.22
81	MS	App'd	25.08.22
82	MS	App'd	25.08.22
83	MS	App'd	25.08.22
84	MS	App'd	25.08.22
85	MS	App'd	25.08.22
86	MS	App'd	25.08.22
87	MS	App'd	25.08.22
88	MS	App'd	25.08.22
89	MS	App'd	25.08.22
90	MS	App'd	25.08.22
91	MS	App'd	25.08.22
92	MS	App'd	25.08.22
93	MS	App'd	25.08.22
94	MS	App'd	25.08.22
95	MS	App'd	25.08.22
96	MS	App'd	25.08.22
97	MS	App'd	25.08.22
98	MS	App'd	25.08.22
99	MS	App'd	25.08.22
100	MS	App'd	25.08.22



Client/Project  
W. O. Stinson & Son Ltd.  
Albion Road Property  
VEHICLE YARD SERVICE BUILDING  
301 SOMME STREET  
OTTAWA, ON, CANADA

Title  
EXISTING CONDITIONS PLAN

Project No. 160402138	Scale 1:500	Sheet EX-1	Revision 2 of 9
--------------------------	----------------	---------------	--------------------