



STRUCTURAL, MECHANICAL AND ELECTRICAL
2611 QUEENSWAY DRIVE, SUITE 300, OTTAWA, ONTARIO, CANADA K6J 3E5
TEL: 613-690-3999 FAX: 613-614-3934 WSP.COM



2445 Boul. St-Laurent, Ottawa, ON, K1G 6C3 Tel: 613-742-8960 Toll-Free: 1-888-33CEPEO

COPYRIGHT NOTICE
THIS DRAWING AND DESIGN IS COPYRIGHT PROTECTED.
DO NOT REPRODUCE OR REVISE WITHOUT WRITTEN PERMISSION BY ARCHITECTURE49 INC.

SEAL:



THIS BAR IS 25mm LONG WHEN PLOTTED AT CORRECT SCALE. DO NOT SCALE DRAWINGS.

NORTH ARROW: DIGITAL REFERENCE:



PROJECT NO.: CA0039818.5981 CONTRACT NO.

DRAWN BY: NM/GO CHECKED BY: NT APPROVED BY:

KEYPLAN:

3 04 APR 2025 ISSUED FOR SITE PLAN APPROVAL R1
2 26 FEB 2025 ISSUED FOR SITE PLAN APPROVAL
1 14 FEB 2025 ISSUED FOR COSTING

PROJECT

ÉCOLE ÉLÉMENTAIRE
LEITRIM
BLOCK :
3955 KELLY FARM
DRIVE, OTTAWA

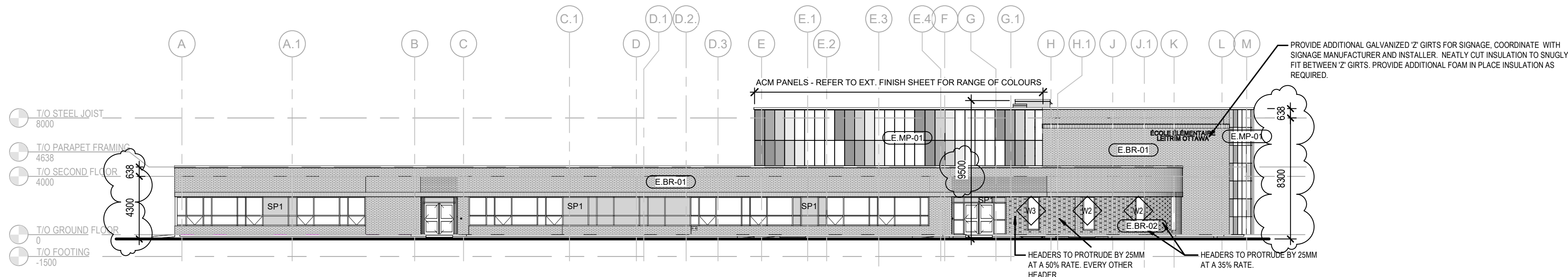
DRAWING TITLE

ELEVATIONS

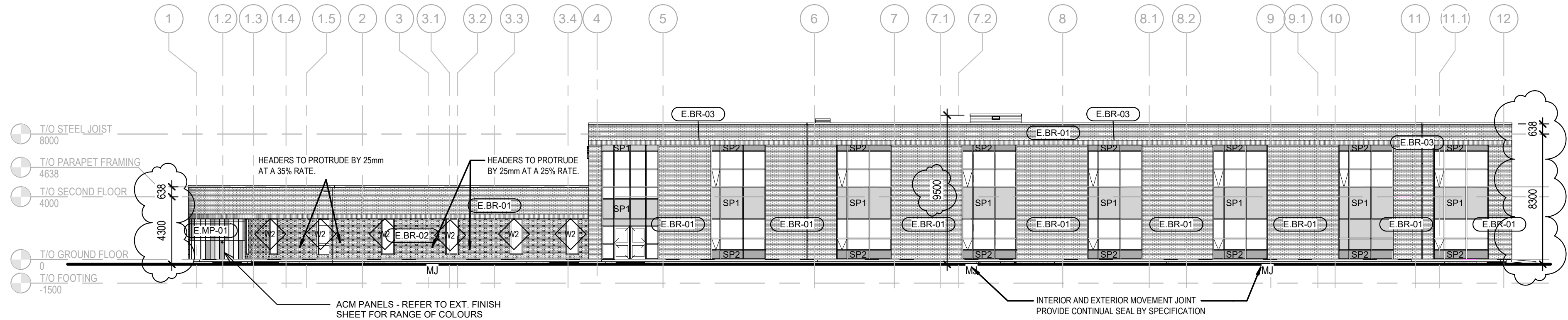
DRAWING NO.

AS301

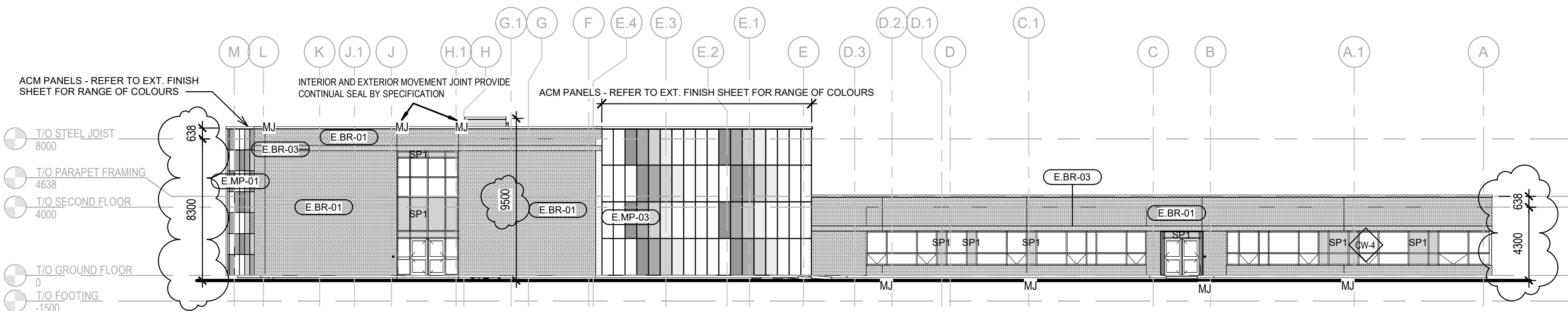
PRINT DATE: 2025-04-04 3:06:46 PM



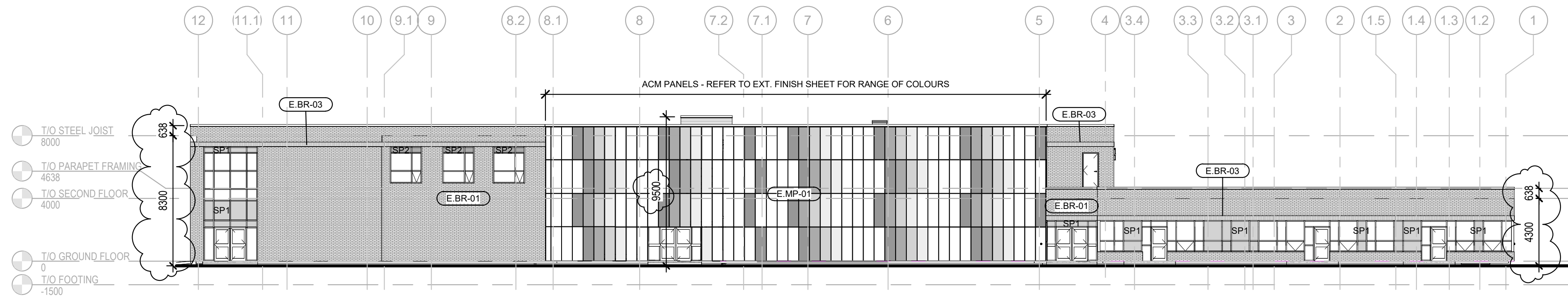
4 WEST ELEVATION
AS301 1:200



3 SOUTH ELEVATION
AS301 1:200



1 EAST ELEVATION
AS301 1:200



2 NORTH ELEVATION
AS301 1:200

EXTERIOR MATERIALS LEGEND	
Key Value	Keynote Text
E.BR-01	RUNING BOND
E.BR-02	FLEMISH BOND
E.BR-03	VERTICAL STACK BOND
E.MP-01	700X1300 MM MAXIMUM SIZE OF ALUMINUM COMPOSITE PANEL WITH CUSTOM PAINTED FINISH
E.MP-03	CUSTOM WIDTHx2200 mm MAXIMUM SIZE OF ALUMINUM COMPOSITE PANEL WITH CUSTOM PAINTED FINISH
SP1	SPANDREL PANEL COLOUR 1 (REFER TO EXTERIOR FINISHES SHEET)
SP2	SPANDREL PANEL COLOUR 2 (REFER TO EXTERIOR FINISHES SHEET)

APPROVED

By Kersten Nitsche at 2:58 pm, Sep 08, 2025

Kersten Nitsche

KERSTEN NITSCHKE, MCIP RPP
MANAGER (A), DEVELOPMENT REVIEW WEST
PLANNING, DEVELOPMENT AND BUILDING SERVICES
DEPARTMENT, CITY OF OTTAWA