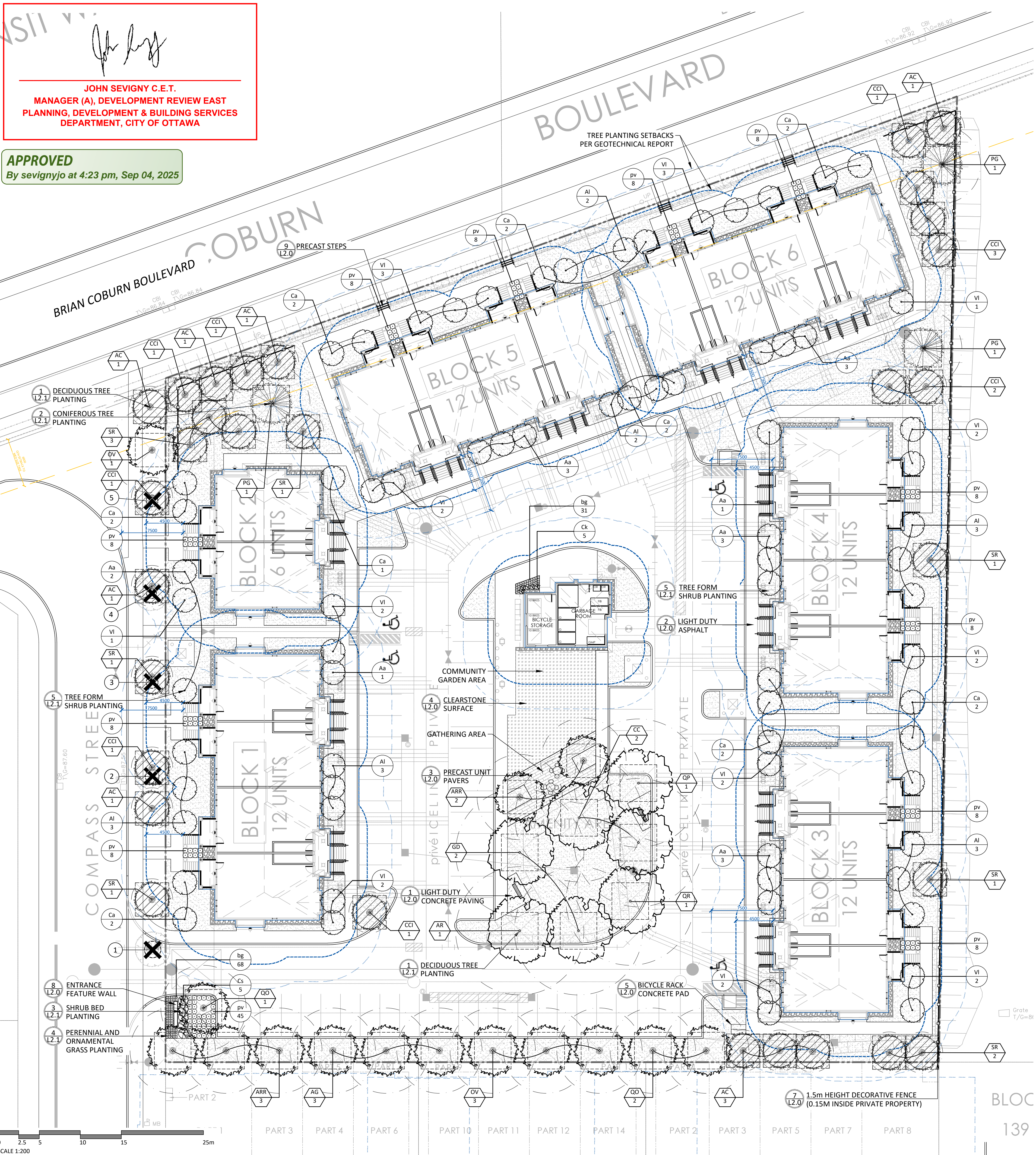






JOHN SEVIGNY C.E.T.
MANAGER (A), DEVELOPMENT REVIEW EAST
PLANNING, DEVELOPMENT & BUILDING SERVICES
DEPARTMENT, CITY OF OTTAWA

APPROVED
By sevignyjo at 4:23 pm, Sep 04, 2025



TREE CONSERVATION REPORT							
Tree #	Botanical Name	Common Name	DBH (cm)	Ownership	Condition	Notes	To Be Preserved
1	Acer saccharum	Sugar Maple	11	City	GOOD	Symmetrical canopy, Die Back: ~5% @ crown, Single stem	NO
2	Acer saccharum	Sugar Maple	14	City	GOOD	Symmetrical canopy, Single stem, Bark damage @ root flare	NO
3	Quercus Bicolor	Swamp White Oak	12	City	GOOD	Symmetrical canopy, Single Stem, Co-dominant Leaders: 2@ ~3m above grade	NO
4	Quercus Bicolor	Swamp White Oak	10	City	GOOD	Symmetrical canopy, Die Back: ~5% @ canopy, Single stem	NO
5	Quercus Bicolor	Swamp White Oak	12	City	GOOD	Symmetrical canopy, Single Stem	NO

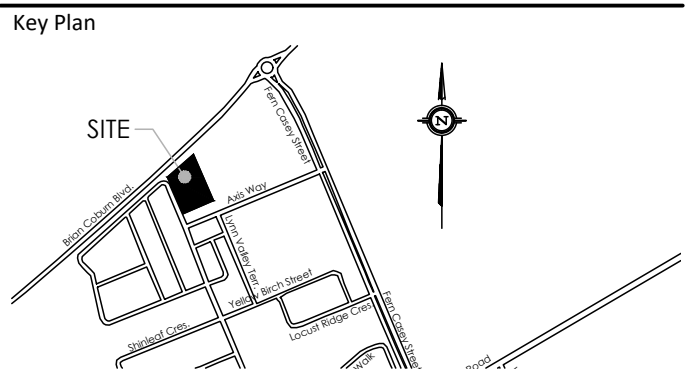
SOIL VOLUME PROJECTIONS (NTS)*			TREE SOIL VOLUMES		
SMALL	MEDIUM/ CONIFER	LARGE	TREE TYPE/SIZE	SINGLE TREE SOIL VOLUME	MULTIPLE TREE SOIL VOLUME (m3/TREE)
			ORNAMENTAL	15	9
			COLUMNAR	15	9
			SMALL	20	12
			MEDIUM	25	15
			LARGE	30	18
			CONIFER	25	15
*SOIL VOLUME CALCULATION BASED ON 1.5m DEPTH					

CANOPY PROJECTIONS (NTS)		PROPOSED TREE CANOPY PROJECTIONS			
LARGE		TREE TYPE/SIZE	CROWN AREA PER TREE STANDARD RANGE (m²)	CROWN AREA PER TREE USED FOR CALC. (m²)	SITE CANOPY COVER
MEDIUM		LARGE (7)	135-250*	192	CANOPY (W. OVERLAP): 1,835m²
		MEDIUM (15)	35-135*	85	
		SMALL (25)	5-35*	20	
		CONIFER (3)	45-96*	70	
PROPOSED STREET TREE CANOPY PROJECTIONS OVER SITE					
SMALL		PROPOSED STREET TREE CANOPY, m² CALCULATION BASED ON PROPOSED TREE SPECIES CANOPY AT MATURITY			CANOPY (W/ OVERLAP): 28m²
CONIFER		*RANGE OF CROWN AREAS IS IN ACCORDANCE WITH PROPOSED TREES SPECIES			SITE: 9,560m²
		*CROWN AREAS ARE ACCORDING TO THE AVERAGE MATURE CANOPY SIZE OF THE RESPECTIVE SPECIES. CANOPY SIZING HAS BEEN DETERMINED IN REFERENCE TO VARIOUS ARBORICULTURAL AND BOTANICAL SOURCES, SUCH AS: ONTARIO MINISTRY OF NATURAL RESOURCES & FORESTRY (OMNRF); US FOREST SERVICE; FARRAR, J.L. TREES IN CANADA; UNIVERSITY OF GUELPH ARBORETUM, VARIOUS PUBLICATIONS			TOTAL PERCENT COVER: 19.49%

PLANT LIST						
KEY	QTY	BOTANICAL NAME	COMMON NAME	SIZE	REMARKS	NAT. OWNER
DECIDUOUS TREES - LARGE (15-30M HEIGHT)						
AR	1	ACER RUBRUM	RED MAPLE	70mm	B&B	Y PRIVATE
CC	2	CARYA CORDIFORMIS	BITTERNUT HICKORY	70mm	B&B	Y PRIVATE
GD	2	GYMNOCLADUS DIOICUS	KENTUCKY COFFEE TREE	70mm	B&B	Y PRIVATE
QP	1	QUERCUS PALUSTRIS	PIN OAK	70mm	B&B	Y PRIVATE
QR	1	QUERCUS RUBRA	RED OAK	70mm	B&B	Y PRIVATE
DECIDUOUS TREES - MEDIUM (8-14M HEIGHT)						
AG	3	AESCULUS GLABRA	OHIO BUCKEYE	70mm	B&B	Y PRIVATE
ARR	5	ACER RUBRUM 'REDPOINTE'	REDPOINTE RED MAPLE	70mm	B&B	N PRIVATE
OV	4	OSTRYA VIRGINIANA	IRONWOOD	50mm	B&B	Y CITY/ PRIVATE
QO	3	QUERCUS PRINUS	CHESNUT OAK	50mm	B&B	Y PRIVATE
DECIDUOUS TREES - SMALL (6-8M HEIGHT)						
AC	9	AMELANCHIER CANADENSIS	SERVICEBERRY	50mm	B&B, TREE FORM	Y CITY/ PRIVATE
CCI	11	CRATAEGUS CRUSGALI 'INERMIS'	THORNTLESS HAWTHORN	250cm, 15 GAL	PT, TREE FORM	N PRIVATE
SR	10	SYRINGA RETICULATA 'IVORY SILK'	JAPANESE LILAC	50mm	B&B, TREE FORM	N CITY/ PRIVATE
CONIFEROUS TREES						
PG	3	PICEA GLAUCA	WHITE SPRUCE	200cm	B&B	Y PRIVATE
MULTISTEM SHRUBS						
Aa	16	AMELANCHIER ALNIFOLIA 'REGEN'	SASKATOON SERVICEBERRY 'REGEN'	125cm HT	PT, CLUMP	N PRIVATE
Al	16	AMELANCHIER LAEVIS	ALLEGHENY SERVICEBERRY	125cm HT	PT, CLUMP	Y PRIVATE
Ca	17	CORNUS ALTERNIFOLIA	PAGODA DOGWOOD	125cm HT	PT, CLUMP	Y PRIVATE
VI	24	VIBURNUM LENTAGO	NANNYBERRY	125cm HT	PT, CLUMP	Y PRIVATE
DECIDUOUS SHRUBS						
Cs	5	CORNUS SERICEA 'FARROW'	ARCTIC FIRE WOOD	50CM, 3 GAL	POTTED	N PRIVATE
Ck	5	CORNUS SERICEA 'KELSEY'	KELSEY DWARD DOGWOOD	50CM, 3 GAL	POTTED	N PRIVATE
GRASSES/PERENNIALS						
bg	99	BOUTELOUA GRACILIS	SIDE OATS GRAMA	1 GAL	POTTED	Y PRIVATE
pv	141	PANICUM VIRGATUM	SWITCHGRASS	1 GAL	POTTED	Y PRIVATE
TOTAL						
7	LARGE DECIDUOUS TREES		QUANTITY - PRIVATELY OWNED (47 TOTAL)		QUANTITY - CITY OWNED (8 TOTAL)	
15	MEDIUM DECIDUOUS TREES		14		1	
30	SMALL DECIDUOUS TREES		23		7	
3	CONIFEROUS TREES		3		0	

NOTES:
THE LANDSCAPE PLAN WAS PREPARED IN CONJUNCTION WITH THE GEOTECHNICAL REPORT AND MEMO(S) PREPARED BY PATERSON GROUP:
• REPORT PG6406-1 REV 1, DATED OCTOBER 10, 2024
• MEMO PG6406-MEMO.01 REV 1, DATED APRIL 29, 2025
REFER TO SHEET L2.1 FOR TREE PLANTING IN MARINE CLAY SOILS NOTES.

Contractor shall check all dimensions on the work and report any discrepancy to the Landscape Architect before proceeding. All drawings and specifications are the property of the Landscape Architect and must be returned at the completion of the work. This drawing is not to be used for construction until signed by the Landscape Architect.

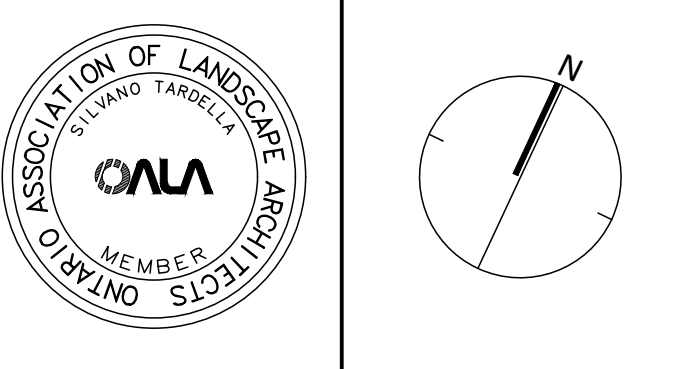


LEGEND	
	PROPERTY LINE
	GEOTECHNICAL FOUNDATION SETBACK (7.5m)
	GEOTECHNICAL FOUNDATION SETBACK (4.5m) (SMALL TREES ONLY)
	Q/H SETBACK TO MEDIUM SIZE TREE (6.0m)
	FENCING
	DECORATIVE FENCE
PLANTING	
	LARGE DECIDUOUS TREE
	MEDIUM DECIDUOUS TREE
	SMALL DECIDUOUS TREE
	CONIFEROUS TREE
	TREE FORM SHRUB
	DECIDUOUS/CONIFEROUS SHRUB
	GRASSES/PERENNIALS
	SODDING
	PRECAST EDGER
PAVING	
	LIGHT DUTY ASPHALT WALKWAYS
	PRECAST UNIT PAVERS
	RIVERSTONE PAVING
	CRUSHED GRANITE
PLANTING KEY	
	TREE SPECIES
	QUANTITY
	SHRUB/PERENNIAL SPECIES
	QUANTITY

DETAIL KEY	
	DETAIL NO.
	SHEET NO.
TREE CONSERVATION REPORT	
	CRITICAL ROOT ZONE
	TREE IDENTIFICATION NUMBER
	TREE TO BE REMOVED

7	Issued for Third Submission	25-07-24
6	Issued for Second Submission	25-05-27
5	Issued for Second Submission	25-05-16
4	Re-issued for First Submission	25-01-02
3	Re-issued for First Submission	24-12-18
2	Issued for First Submission	24-11-04
1	Issued for Client Review	24-10-25
No.	Description	Date

Revision
City Approval Stamp
PROPERTY INFORMATION
BLOCK 140 ON REGISTERED PLAN 4M-1544,
PART 1 ON 4R-35191



NAK
design strategies
1285 WELLINGTON STREET, OTTAWA, ON K1Y 3A8 CANADA
T 613.237.2345
Project

640 COMPASS STREET
OTTAWA, ON

Title		
LANDSCAPE SITE PLAN AND TREE CONSERVATION REPORT		
Date	2024-10-07	Sheet
Scale	1:250	
Drawn	MK	
Checked	MK	
Job No.	24-089	
L1.0		