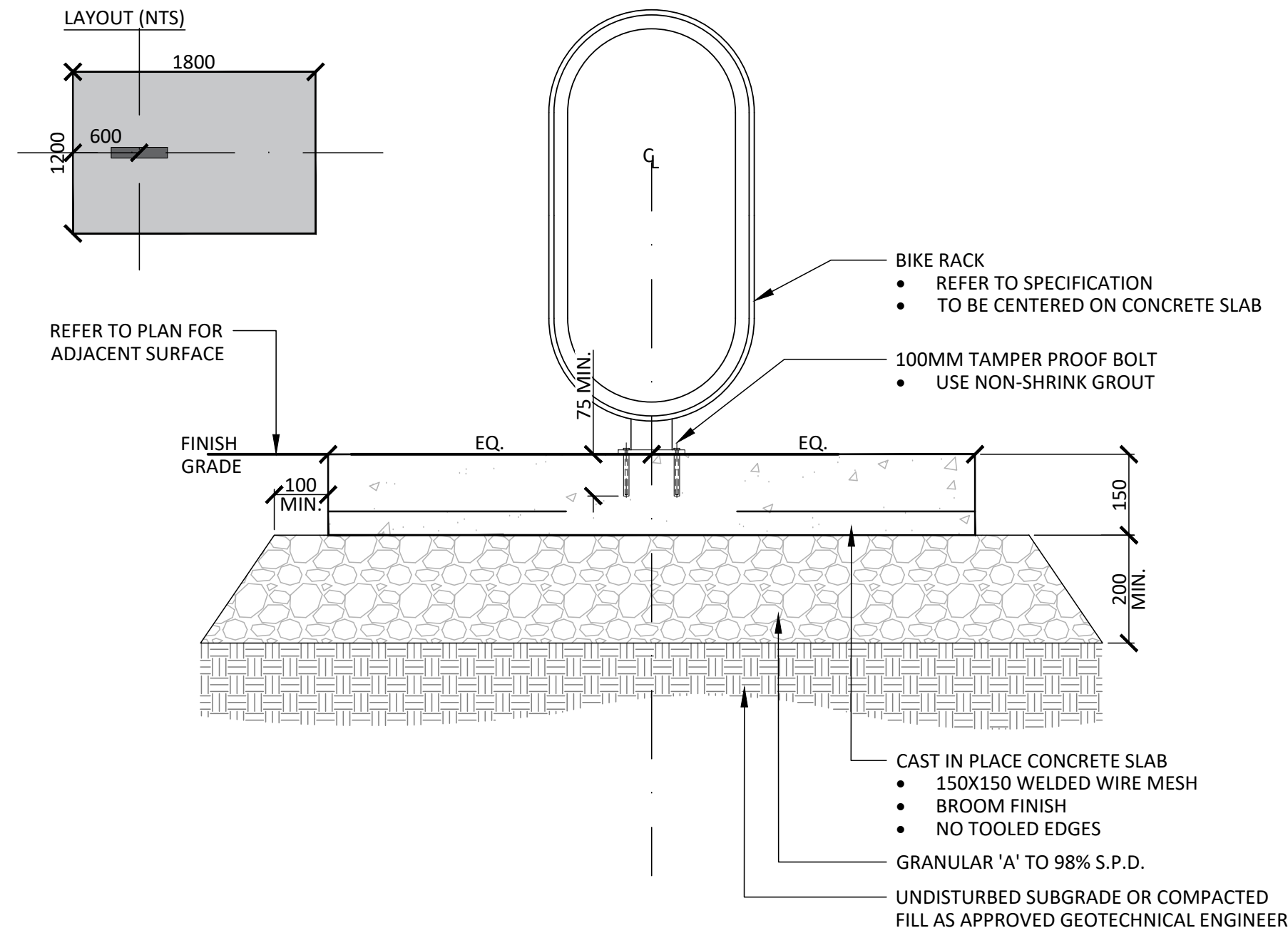
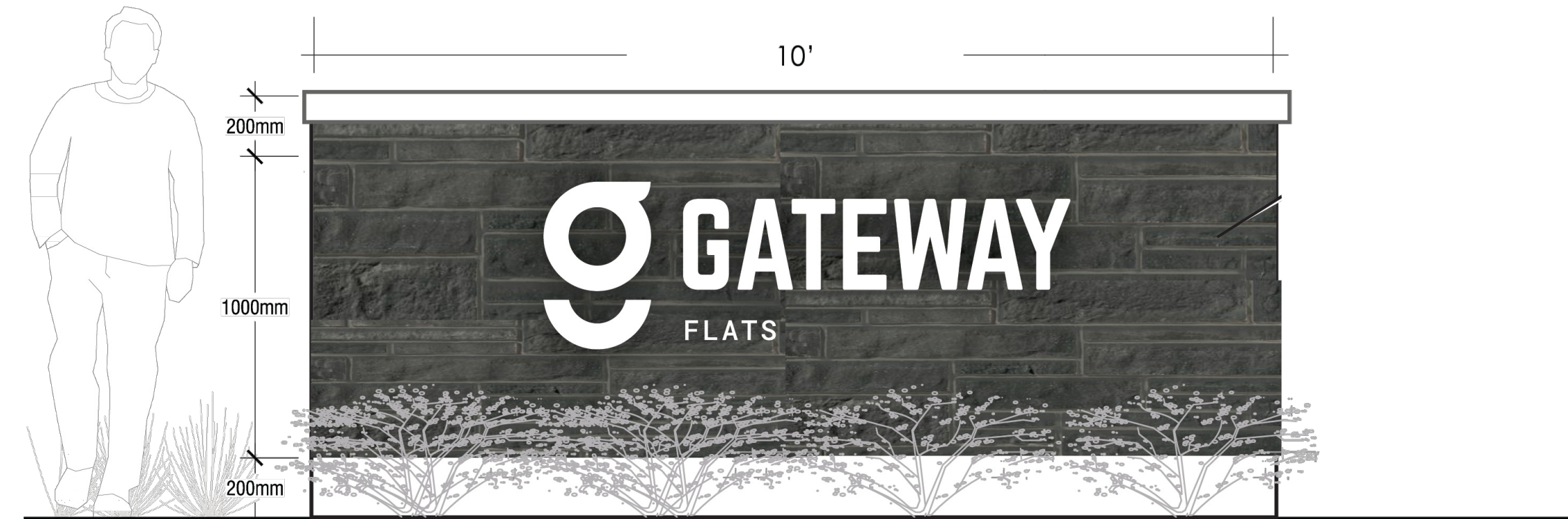


- NOTES:**
- CONCRETE TO BE 32 MPa CLASS C-2 MEETING THE REQUIREMENTS OF S.P. F-3510 AND PLACED IN ACCORDANCE WITH S.P. F-9040. REFER TO SPECIFICATIONS.
 - GRANULAR 'A' - 100% STANDARD PROCTOR DENSITY MIN., GRANULAR B, TYPE 2, SUB BASE GRANULARS TO OPSS APPROVED NON-WOVEN CLASS 1 GEOTEXTILE AS PER MS-22.15 WHEN WARRANTED BY SOIL CONDITION, SUBJECT TO APPROVAL BY THE LANDSCAPE ARCHITECT.
 - CROSS SLOPE PATH 1-2% IN DIRECTION OF NATURAL DRAINAGE TO PROVIDE POSITIVE DRAINAGE OF ALL WALKS.
 - ALL DISTURBED AREAS ALONG WALKWAYS SHALL BE SODDED OVER 150mm TOPSOIL FOR A MINIMUM DISTANCE OF 900mm.

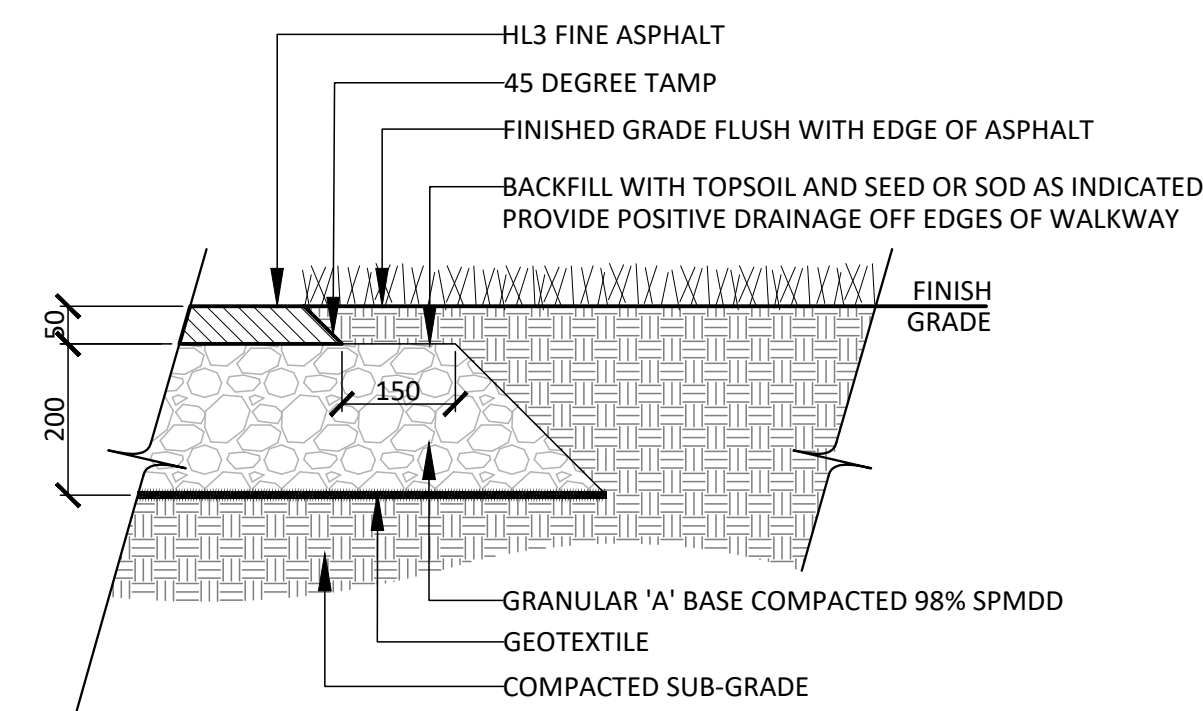
1 LIGHT DUTY CONCRETE PAVING
1:10



5 BICYCLE RACK CONCRETE PAD
1:10

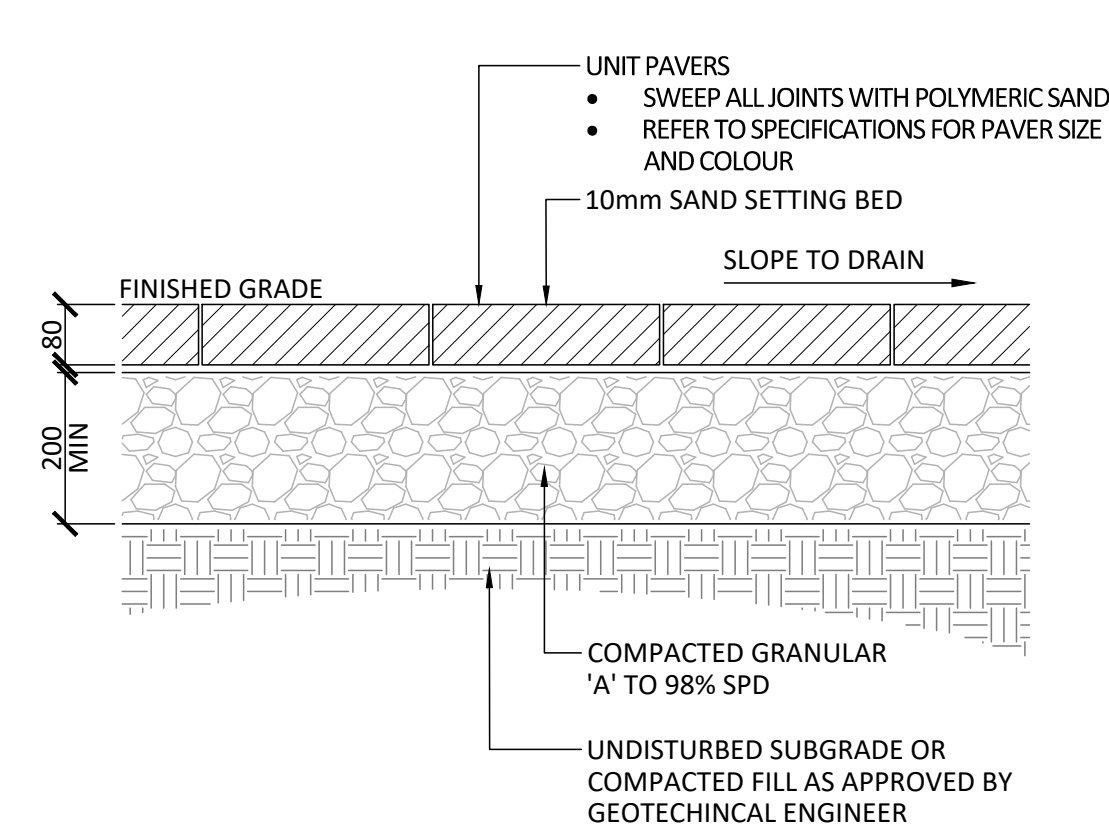


8 ENTRANCE FEATURE WALL
1:10

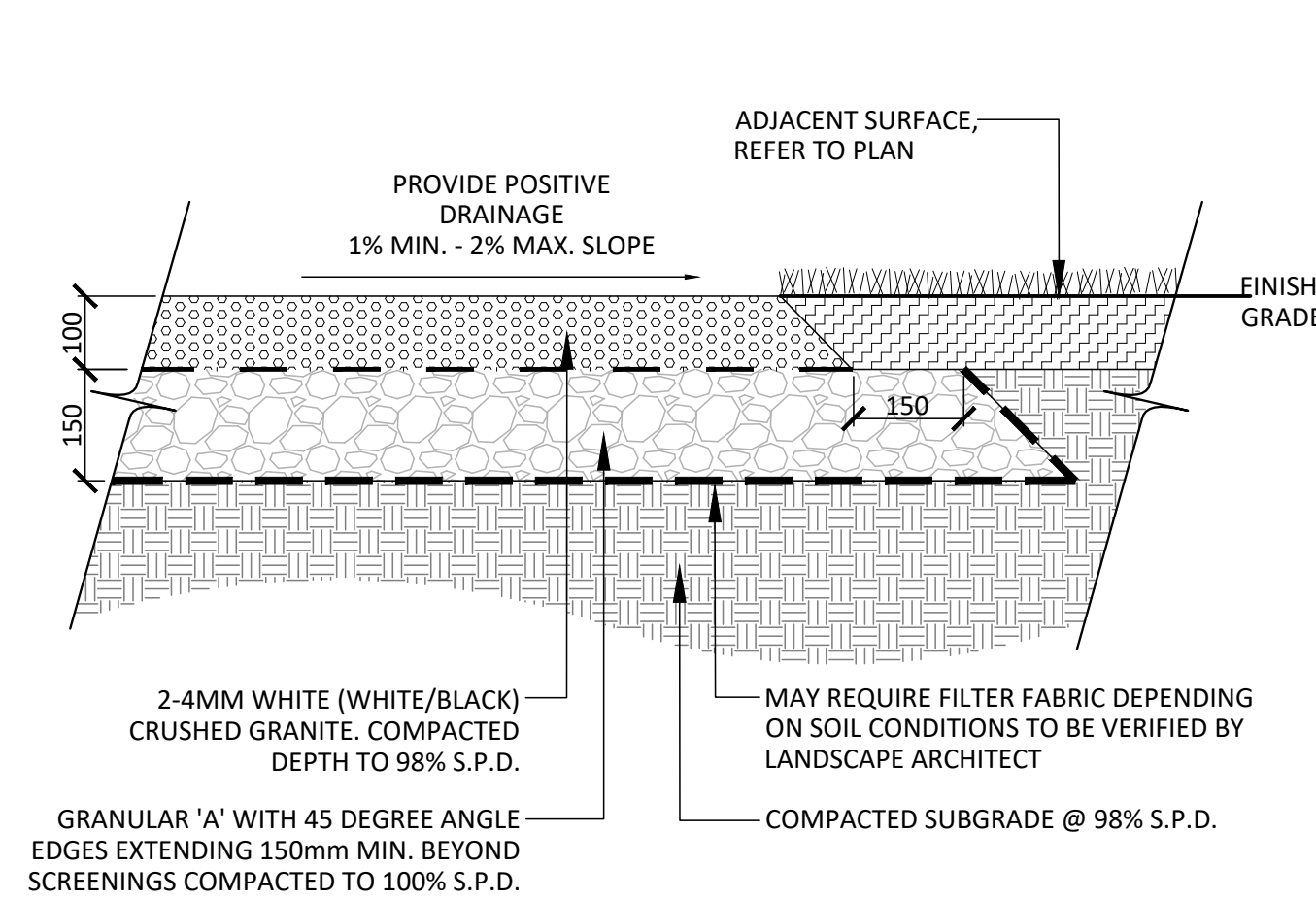


- NOTES:**
- CROSS SLOPE PATH 1-2% IN DIRECTION OF NATURAL DRAINAGE TO PROVIDE POSITIVE DRAINAGE OF ALL WALKS.
 - FILTER FABRIC SHALL BE APPROVED NON-WOVEN CLASS 1 GEOTEXTILE AS PER MS-22.15 WHEN WARRANTED BY SOIL CONDITION, SUBJECT TO APPROVAL BY THE LANDSCAPE ARCHITECT.
 - ALL DISTURBED AREAS ALONG ASPHALT WALKWAYS SHALL BE SODDED OVER 150mm TOPSOIL FOR A MINIMUM DISTANCE OF 900mm.
 - GRANULAR 'A' SHALL MEET THE REQUIREMENTS OF OPSS 1010.

2 LIGHT DUTY ASPHALT
1:10

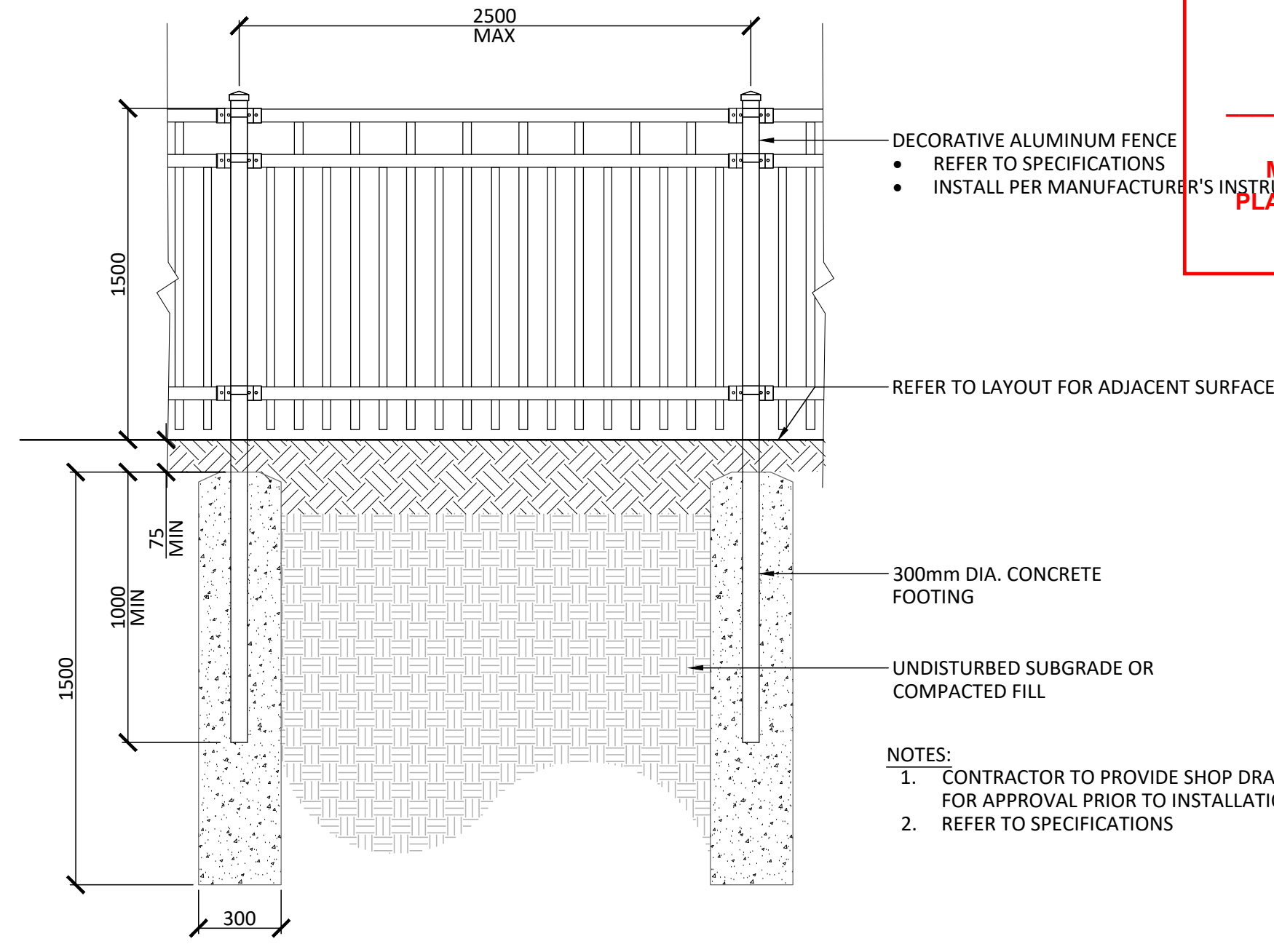


3 LIGHT DUTY UNIT PAVING
1:10



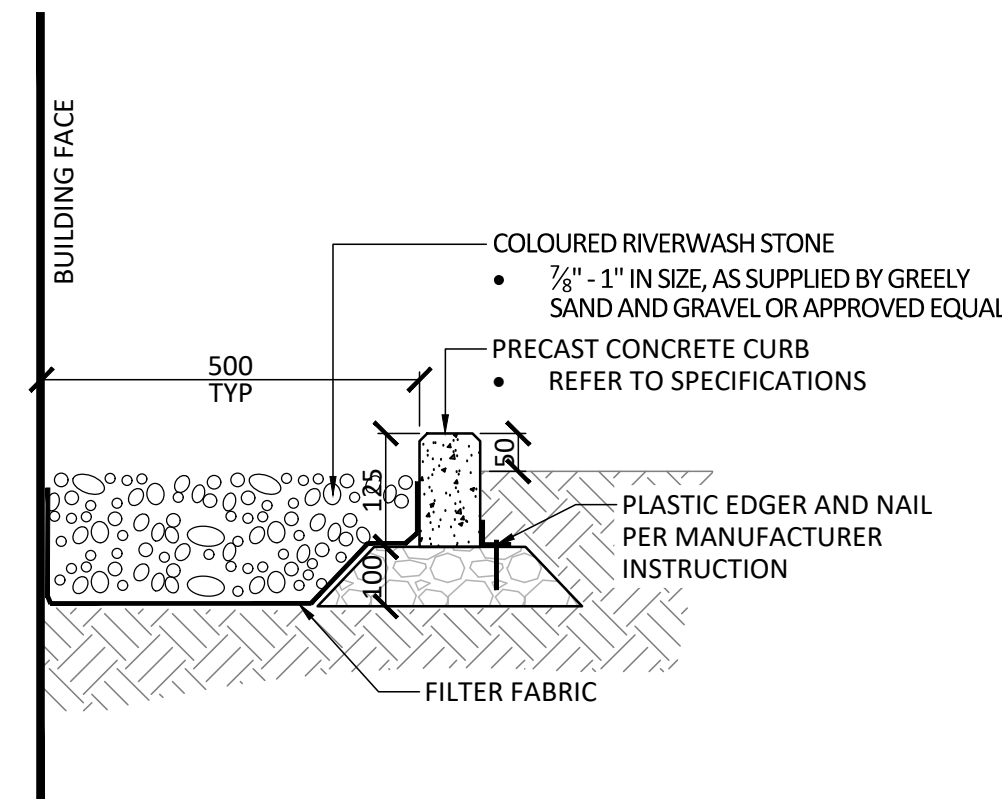
- NOTES:**
- FILTER FABRIC SHALL BE APPROVED NON-WOVEN CLASS 1 GEOTEXTILE AS PER MS-22.15 WHEN WARRANTED BY SOIL CONDITION, SUBJECT TO APPROVAL BY THE LANDSCAPE ARCHITECT.

4 CLEARSTONE SURFACE
1:10

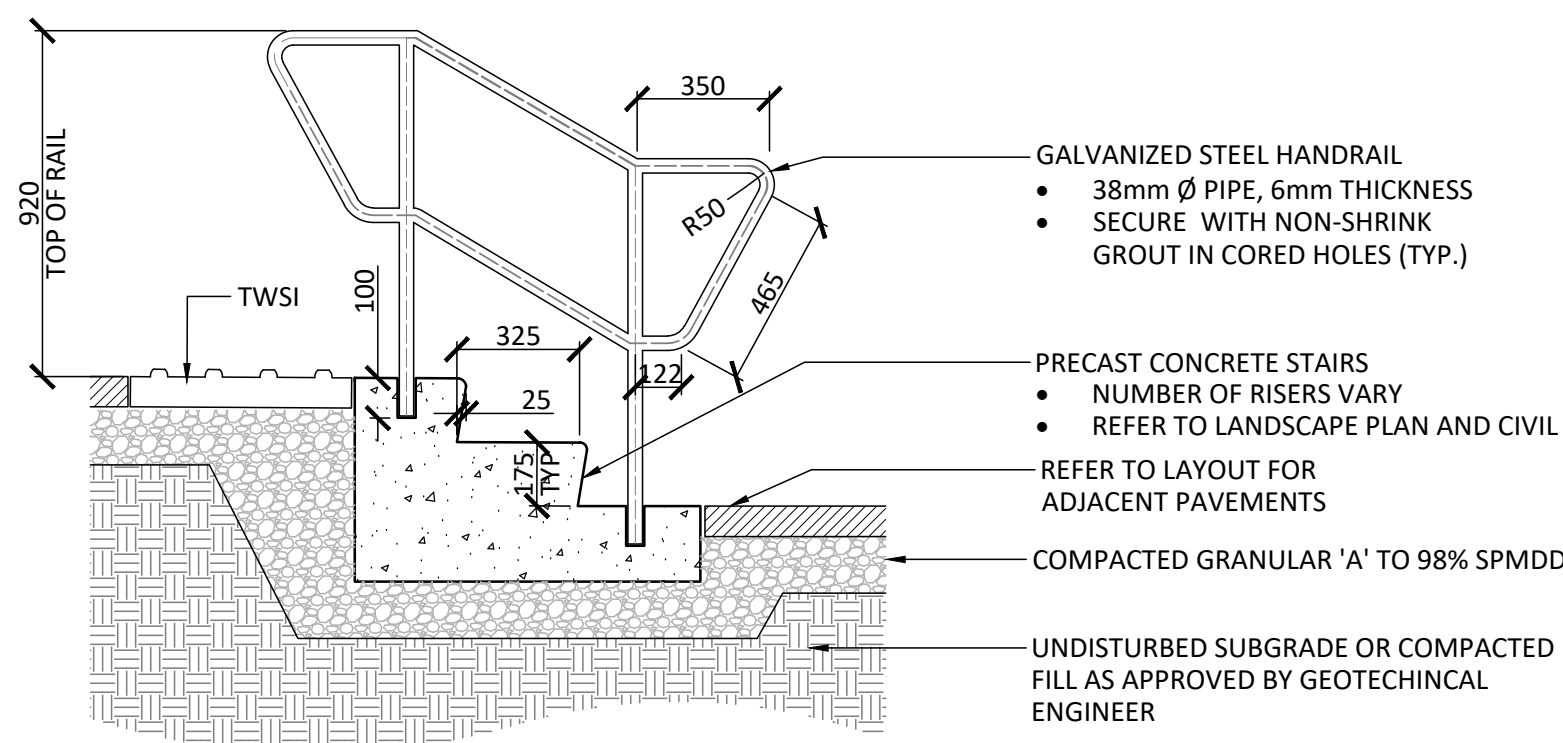


- NOTES:**
- CONTRACTOR TO PROVIDE SHOP DRAWINGS FOR APPROVAL PRIOR TO INSTALLATION
 - REFER TO SPECIFICATIONS

7 DECORATIVE FENCING
1:20



6 MAINTENANCE EDGE
1:10



- NOTES:**
- CONTRACTOR TO PROVIDE ENGINEER STAMPED SHOP DRAWINGS FOR APPROVAL PRIOR TO INSTALLATION

9 PRECAST STEPS
1:20

JOHN SEVIGNY C.E.T.
MANAGER (A), DEVELOPMENT REVIEW EAST
PLANNING, DEVELOPMENT & BUILDING SERVICES
DEPARTMENT, CITY OF OTTAWA

APPROVED
By sevignyjo at 4:24 pm, Sep 04, 2025

Contractor shall check all dimensions on the work and report any discrepancy to the Landscape Architect before proceeding. All drawings and specifications are the property of the Landscape Architect and must be returned at the completion of the work. This drawing is not to be used for construction until signed by the Landscape Architect.

Key Plan

7	Issued for Third Submission	25-07-24
6	Issued for Second Submission	25-05-27
5	Issued for Second Submission	25-05-16
4	Re-issued for First Submission	25-01-02
3	Re-issued for First Submission	24-12-18
2	Issued for First Submission	24-11-04
1	Issued for Client Review	24-10-25
No.	Description	Date
Revision		
City Approval Stamp		

PROPERTY INFORMATION
BLOCK 140 ON REGISTERED PLAN 4M-1544,
PART 1 ON 4R-35191



NAK
design strategies
1285 WELLINGTON STREET, OTTAWA, ON K1Y 3A8 CANADA
T 613.237.2345
Project

640 COMPASS STREET
OTTAWA, ON

Title		
LANDSCAPE DETAILS		
Date	2024-10-09	Sheet
Scale	AS NOTED	L2.0
Drawn	SW	
Checked	MK	
Job No.	24-251	