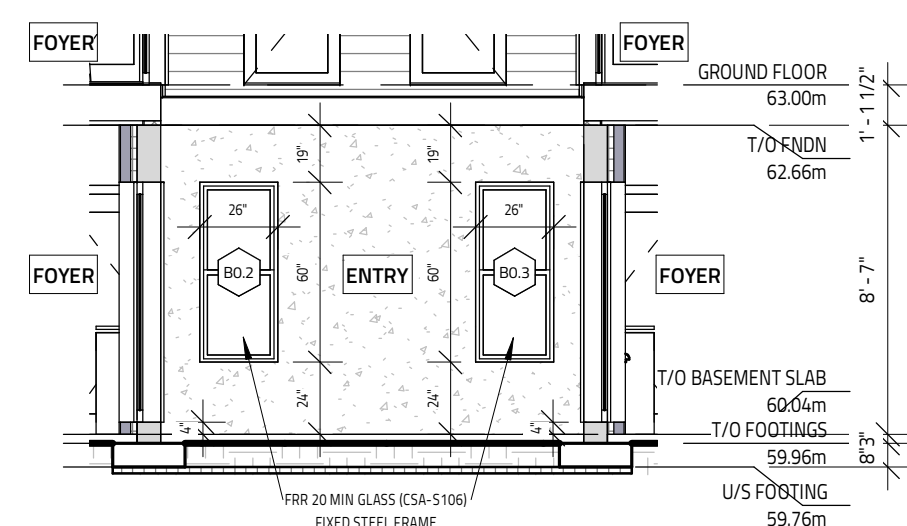
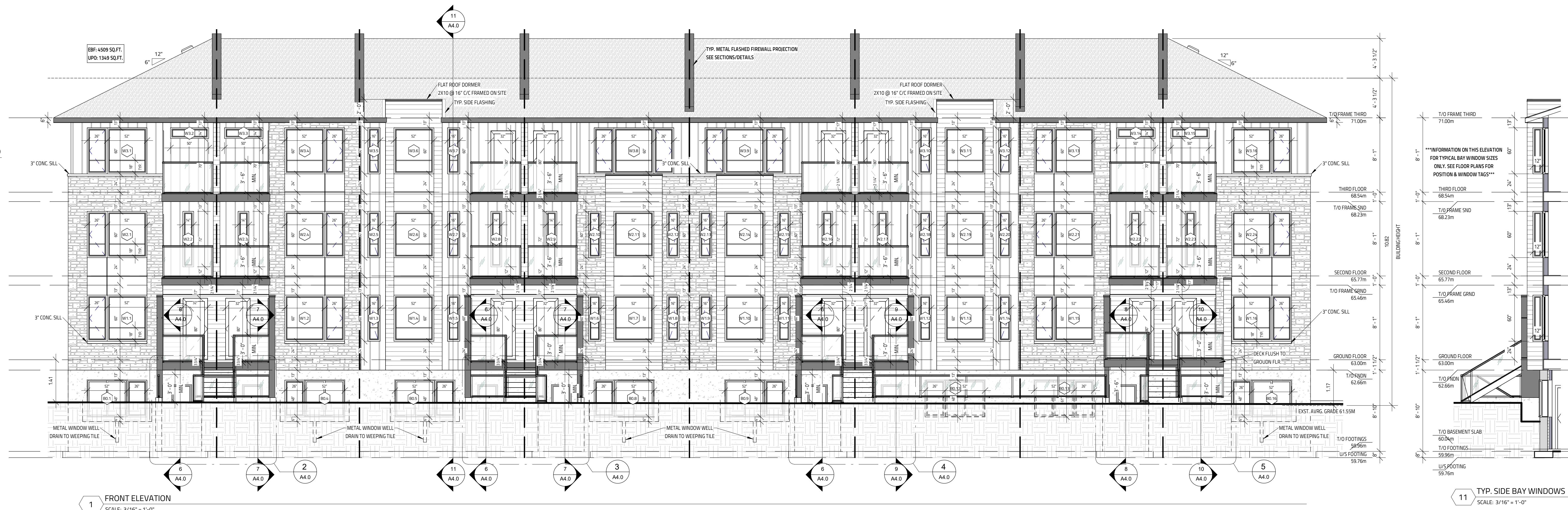
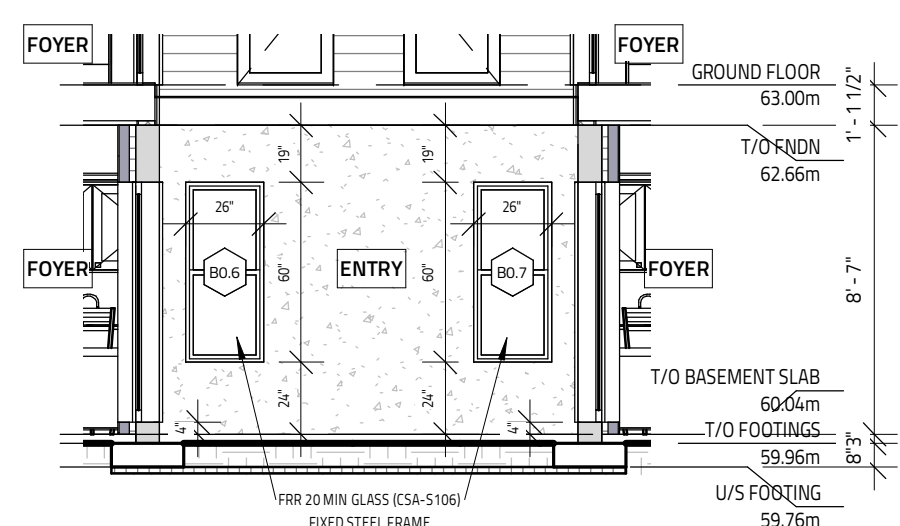


- MASONRY STONE  
FAUX WOOD HORIZ. METAL SIDING  
STANDING SEAM VERTICAL METAL SIDING  
STUCCO PAINT FINISH OVER CEMENT BOARD  
CEMENT BOARD PANELS  
CEMENT PARING  
METAL FASCIA/FLASHING  
ASPHALT SHINGLES

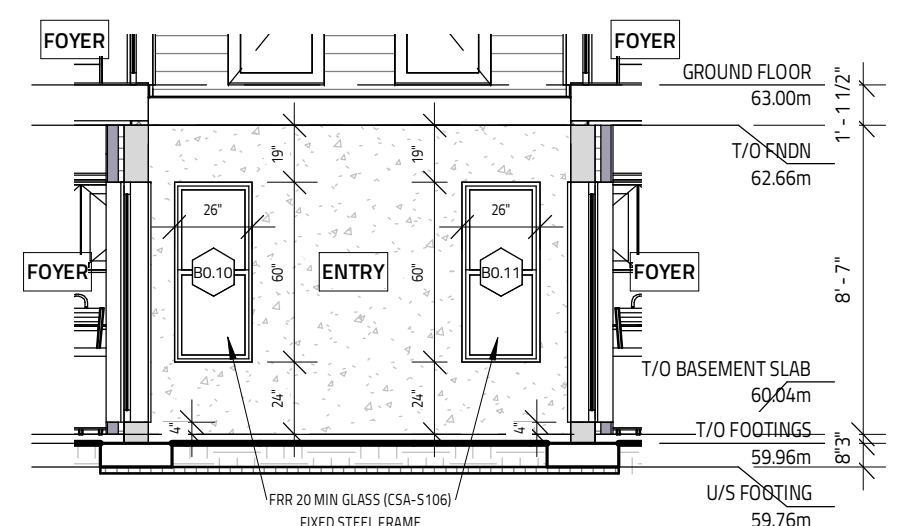
ELEVATION MATERIAL LEGEND  
SCALE: 3/16" = 1'-0"



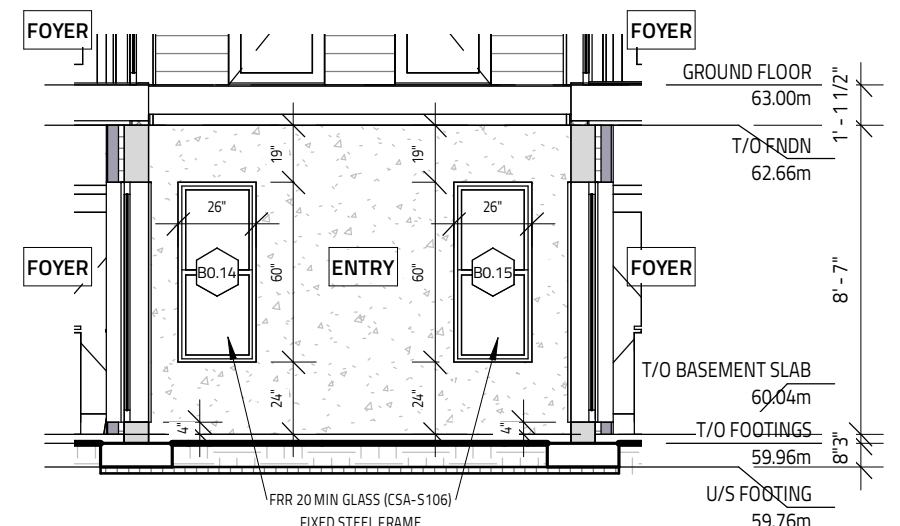
2 FRONT ELEVATION - UNIT 1C & 2C ENTRY  
SCALE: 3/16" = 1'-0"



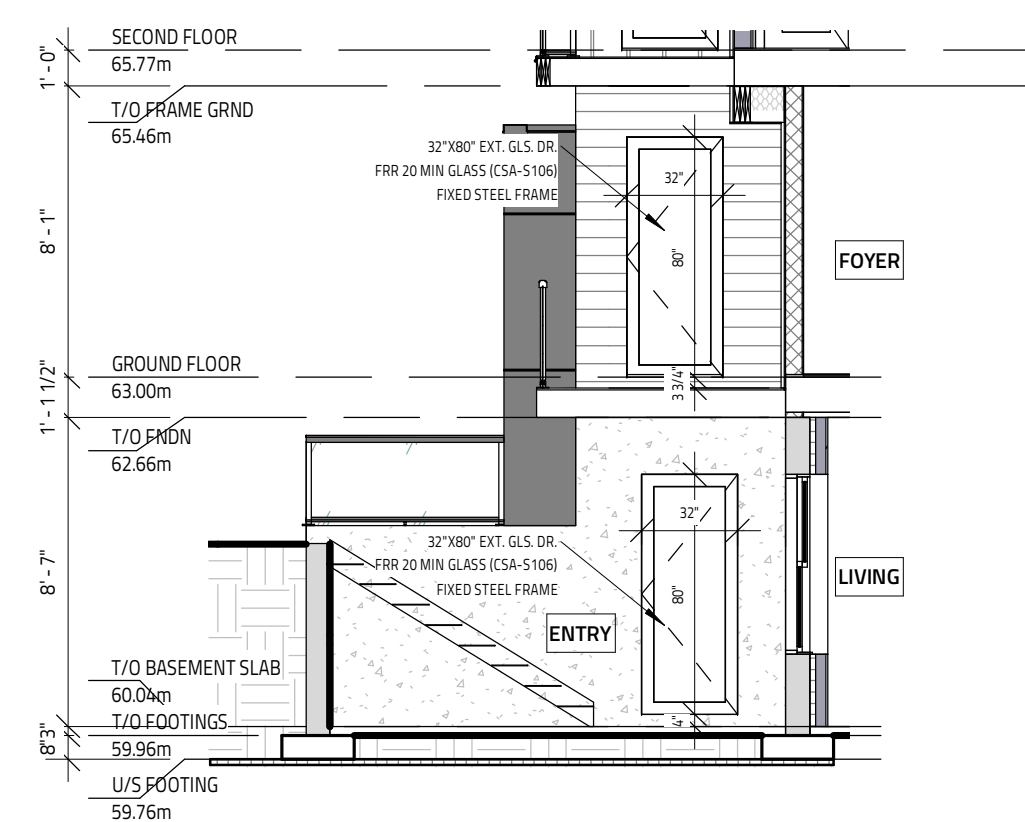
3 FRONT ELEVATION - UNIT 3C & 4C ENTRY  
SCALE: 3/16" = 1'-0"



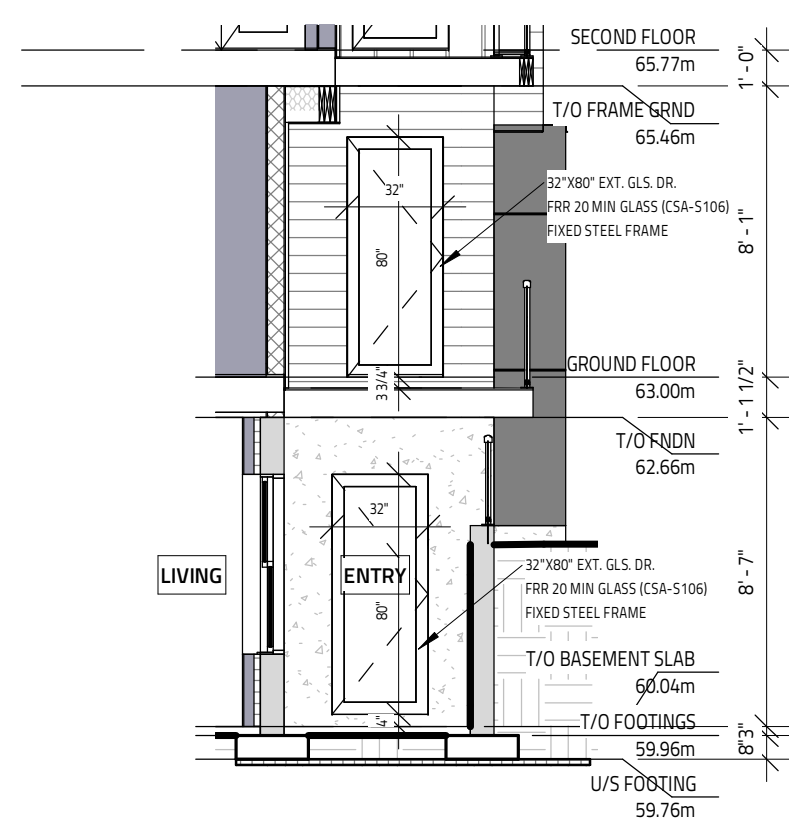
4 FRONT ELEVATION - UNIT 5C & 6C ENTRY  
SCALE: 3/16" = 1'-0"



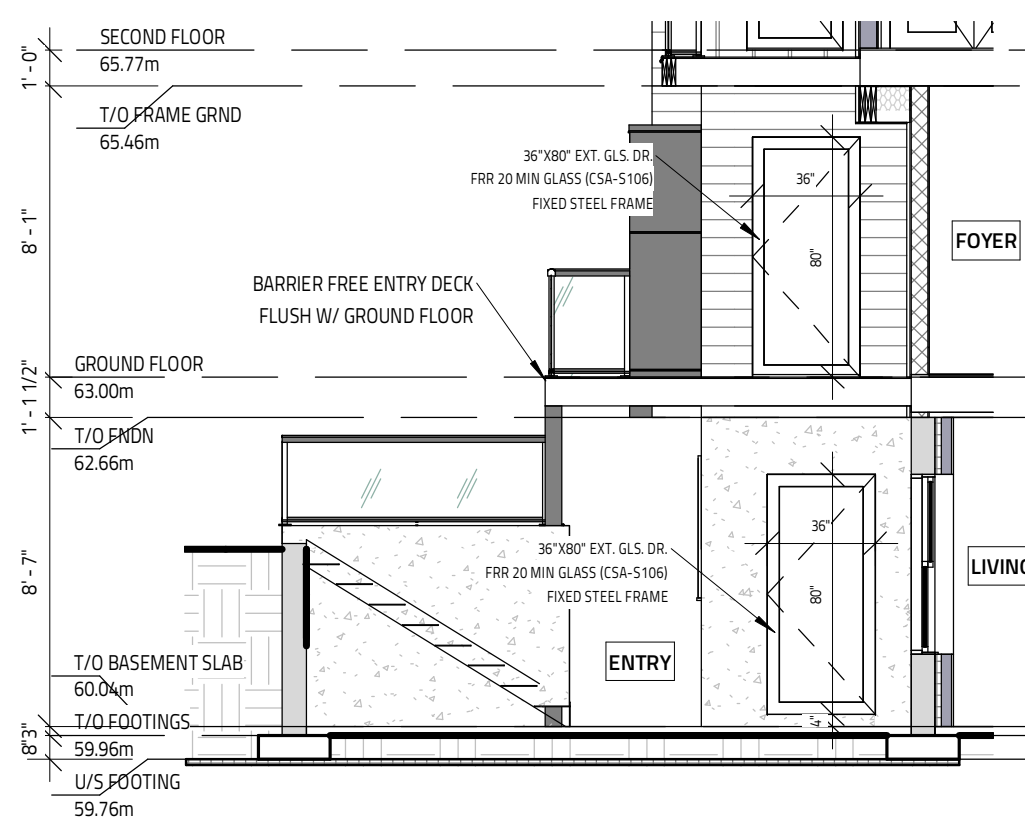
5 FRONT ELEVATION - UNIT 7C & 8C ENTRY  
SCALE: 3/16" = 1'-0"



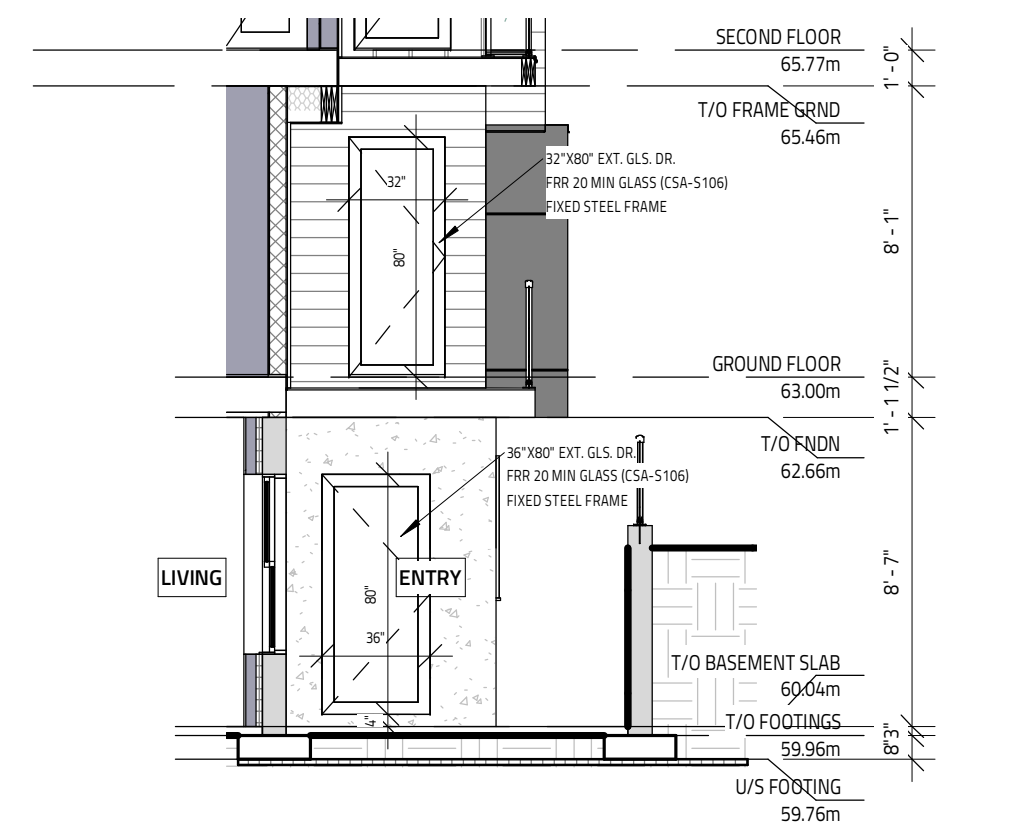
6 FRONT ELEVATION - BASEMENT INNER LEFT  
SCALE: 3/16" = 1'-0"



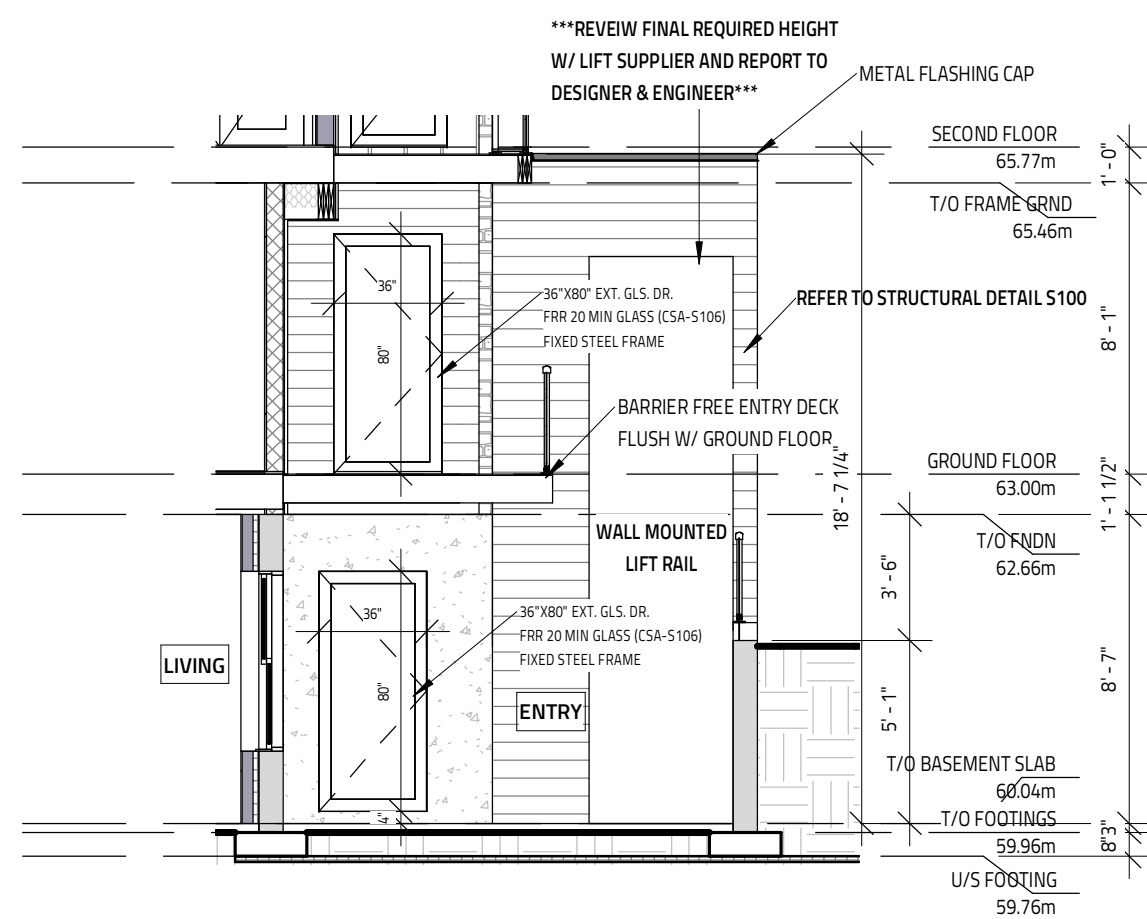
7 FRONT ELEVATION - BASEMENT INNER RIGHT  
SCALE: 3/16" = 1'-0"



8 FRONT ELEVATION - BASEMENT INNER LEFT (BARRIER FREE)  
SCALE: 3/16" = 1'-0"



9 FRONT ELEVATION - BASEMENT INNER RIGHT (BARRIER FREE)  
SCALE: 3/16" = 1'-0"



10 FRONT ELEVATION - BASEMENT INNER RIGHT (@ LIFT)  
SCALE: 3/16" = 1'-0"

IT IS THE RESPONSIBILITY OF THE CONTRACTOR TO CHECK & VERIFY THE WINDOW AND DOOR DIMENSIONS ALONG WITH WINDOW TYPE AND SIZING WITH THE DRAWINGS AND CONDITIONS ON SITE & REPORT ALL DISCREPANCIES TO DESIGNER PRIOR TO PUTTING WINDOW & DOOR ORDER INTO PRODUCTION

MATERIALS USED & CONSTRUCTION PROCEDURE MUST CONFORM TO:  
1. SPECIFICATIONS & NOTES SHOWN ON THIS DRAWING  
2. NOTES & DETAILS SHOWN ON STRUCTURAL DRAWINGS  
3. PROVISIONS IN PART 9 OF O.B.C. 2012

EXTERIOR FINISH CEMENT BOARD PANELING IS HARDIE PANEL H2S CONFORMING TO CCMC 12678-R

**ANDREW MCCREIGHT**  
MANAGER, DEVELOPMENT REVIEW CENTRAL  
PLANNING, DEVELOPMENT & BUILDING SERVICES  
DEVELOPMENT DEPARTMENT, CITY OF OTTAWA

**APPROVED**  
By Andrew McCreight at 8:23 am, Sep 08, 2025

ONTARIO ASSOCIATION  
OF  
ARCHITECTS  
SKOPEK  
LICENCE  
42028

GENERAL NOTES:  
- E & O.E.  
- THESE DRAWINGS ARE NOT FOR CONSTRUCTION UNTIL LOCAL AUTHORITIES ISSUE A PERMIT  
- DRAWINGS MUST BE VIEWED & PRINTED FULL COLOUR  
- DO NOT SCALE DRAWINGS. FIGURED DIMENSIONS ONLY TO BE USED  
- IT IS THE RESPONSIBILITY OF THE CONTRACTOR TO CHECK & VERIFY ALL DIMENSIONS ON SITE & REPORT ALL DISCREPANCIES  
- GENERAL CONTRACTOR TO CONSTRUCT IN ACCORDANCE w/ THE O.B.C. 2012, ANY MUNICIPAL BY LAWS & ALL OTHER APPLICABLE CODES

13	LANDSCAPE DESIGN COORDINATION v2	SEPTEMBER 3, 2025
12	LANDSCAPE DESIGN COORDINATION	AUGUST 29, 2025
11	SIC SITE PLAN CITY COMMENTS APPLIED	AUGUST 29, 2025
10	TREES REV TO MATCH LANDSCAPE DESIGN	MAY 15, 2025
9	SITE PLAN CONTROL REQUESTS APPLIED	APRIL 30, 2025
8	CLIENT CITY CHANGES APPLIED	MARCH 11, 2025
MD	REVISION	DATE

CITY OF OTTAWA - SITE PLAN CONTROL  
(007-12-25-0076) Plan Number (19304)

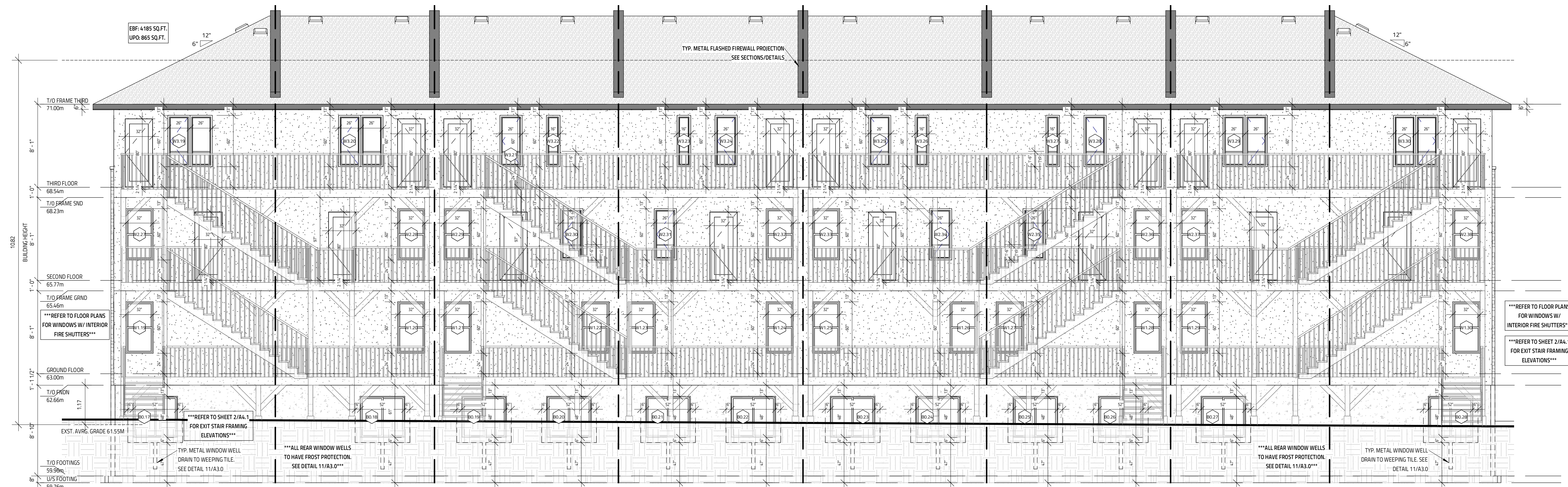
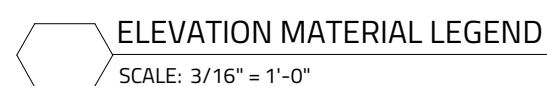
**342,344,348,350 QUEEN MARY STREET**  
8 ROW TOWNHOUSE BLOCK  
3 UNITS/ROW  
OTTAWA, ON

**Evolution**  
DESIGN & DRAFTING

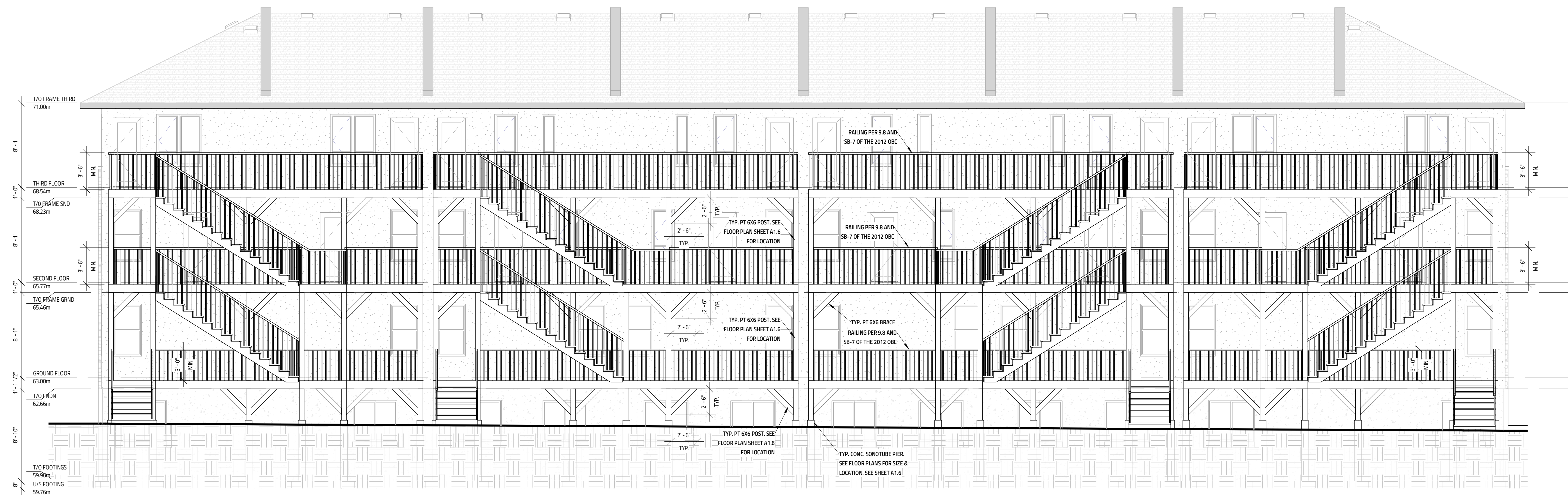
**ELEVATIONS 1**

DATE: 08/28/2024  
DRAWN BY: MW  
CHECKED BY: JZ  
SCALE: 3/16" = 1'-0"  
FILE NAME: W23-00306  
DWG NO.: A4.0





1 REAR ELEVATION  
SCALE: 3/16" = 1'-0"



2 REAR ELEVATION - EXIT STAIR  
SCALE: 3/16" = 1'-0"

EXTERIOR FINISH CEMENT BOARD PANELING IS HARDIE PANEL HZ5  
CONFORMING TO CCMC 12678-R

**APPROVED**  
By Andrew McCreight at 8:23 am, Sep 08, 2025



CITY OF OTTAWA - SITE PLAN CONTROL  
(D07-12-25-0076) Plan Number (19304)

MODEL: 342,344,348,350 QUEEN MARY STREET  
8 ROW TOWNHOUSE BLOCK  
3 UNITS/ROW  
OTTAWA, ON



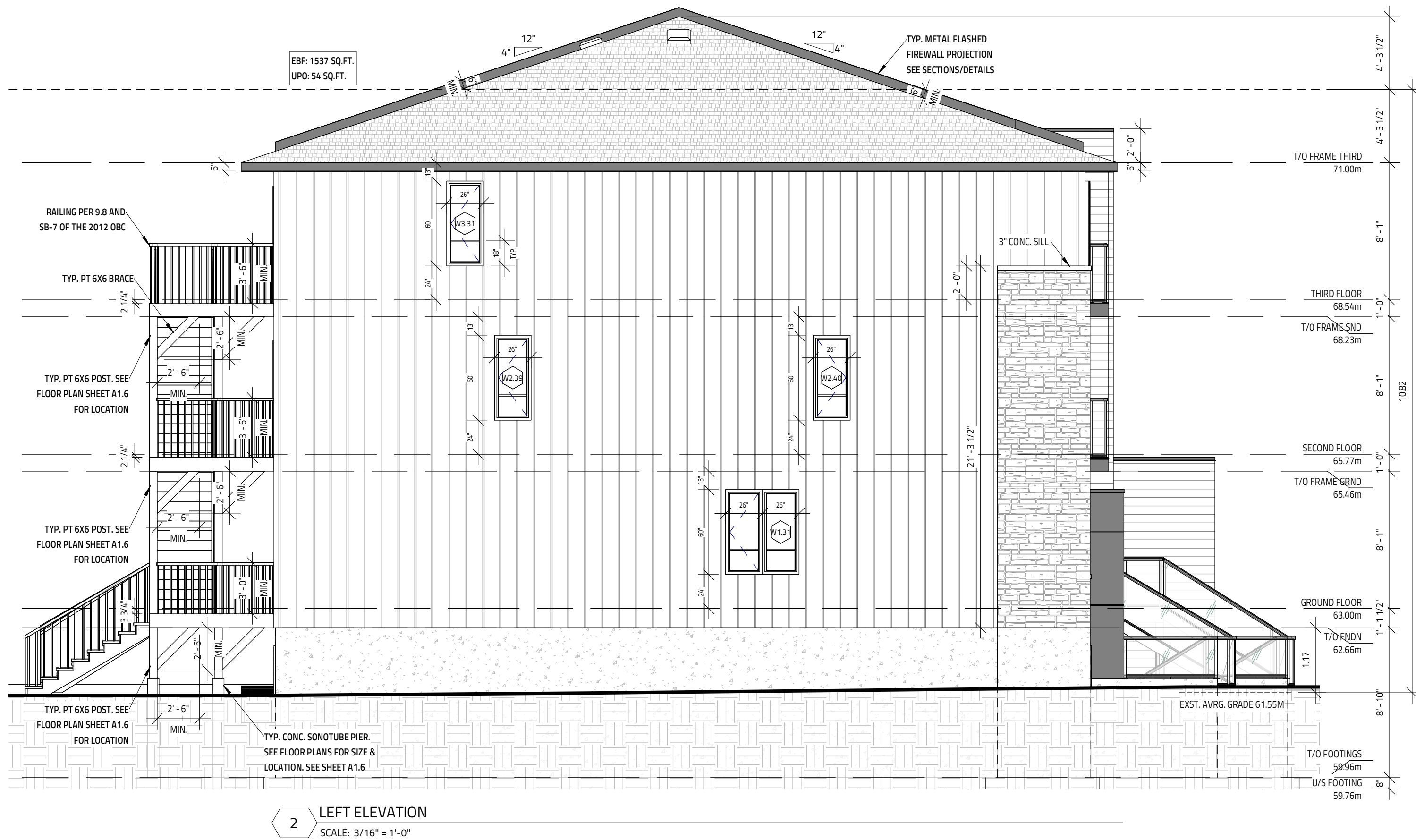
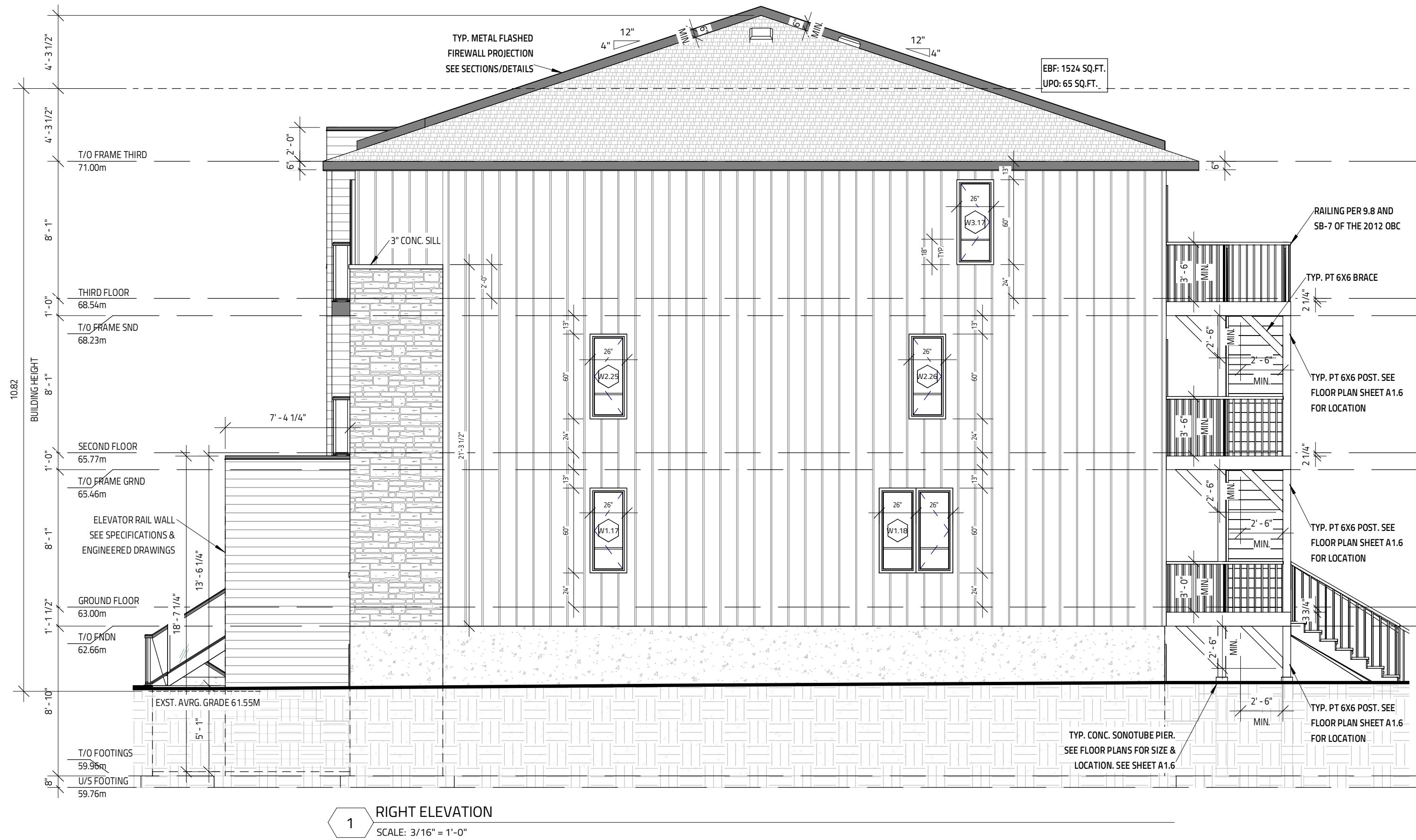
DRAWING TITLE	
<h1>ELEVATIONS 2</h1>	
DATE: DRAWN MARCH 4, 2024	SCALE: 3/16" = 1'-0"
DRAWN BY: MJ	FILE NAME: R23-03106
CHECKED BY: JS	OWG. NO.  <h2>A4.1</h2>



- MASONRY STONE
- 'FAUX' WOOD HORIZ. METAL SIDING
- STANDING SEAM VERTICAL METAL SIDING
- STUCCO PAINT FINISH OVER CEMENT BOARD
- CEMENT BOARD PANELS
- CEMENT PARING
- METAL FASCIA/FLASHING
- ASPHALT SHINGLES

ELEVATION MATERIAL LEGEND

SCALE: 3/16" = 1'-0"



*Andrew McCreight*

ANDREW MCCREIGHT  
MANAGER, DEVELOPMENT REVIEW CENTRAL  
PLANNING, DEVELOPMENT & BUILDING SERVICES  
DEVELOPMENT DEPARTMENT, CITY OF OTTAWA

APPROVED

By Andrew McCreight at 8:23 am, Sep 08, 2025

IT IS THE RESPONSIBILITY OF THE CONTRACTOR TO CHECK & VERIFY THE WINDOW AND DOOR DIMENSIONS ALONG WITH WINDOW TYPE AND SAVING WITH THE DRAWINGS AND CONDITIONS ON SITE & REPORT ALL DISCREPANCIES TO DESIGNER PRIOR TO PUTTING WINDOW & DOOR ORDER INTO PRODUCTION

MATERIALS USED & CONSTRUCTION PROCEDURE MUST CONFORM TO:  
1. SPECIFICATIONS & NOTES SHOWN ON THIS DRAWING  
2. NOTES & DETAILS SHOWN ON STRUCTURAL DRAWINGS  
3. PROVISIONS IN PART 9 OF O.B.C. 2012

EXTERIOR FINISH CEMENT BOARD PANELING IS HARDIE PANEL HZ5  
CONFORMING TO CMC 12678-R



GENERAL NOTES:  
- E. & O.E.  
- THESE DRAWINGS ARE NOT FOR CONSTRUCTION UNTIL LOCAL AUTHORITIES ISSUE A PERMIT  
- DRAWINGS MUST BE VIEWED & PRINTED FULL COLOUR  
- DO NOT SCALE DRAWINGS. FIGURED DIMENSIONS ONLY TO BE USED  
- IT IS THE RESPONSIBILITY OF THE CONTRACTOR TO CHECK & VERIFY ALL DIMENSIONS ON SITE & REPORT ALL DISCREPANCIES  
- GENERAL CONTRACTOR TO CONSTRUCT IN ACCORDANCE w/ THE O.B.C. 2012, ANY MUNICIPAL BY LAWS & ALL OTHER APPLICABLE CODES

NO.	REVISION	DATE
13	LANDSCAPE DESIGN COORDINATION v2	SEPTEMBER 3, 2025
12	LANDSCAPE DESIGN COORDINATION	AUGUST 29, 2025
11	SPEC SITE PLAN CITY COMMENTS APPLIED	AUGUST 29, 2025
10	TREES REV TO MATCH LANDSCAPE DESIGN	MAY 15, 2025
9	SITE PLAN CONTROL REQUESTS APPLIED	APRIL 30, 2025
8	CLIENT/CITY CHANGES APPLIED	MARCH 11, 2025
MD	REVISION	DATE

CITY OF OTTAWA - SITE PLAN CONTROL  
(D07-12-25-0076) Plan Number (19304)

PROJECT:  
342,344,348,350 QUEEN MARY STREET  
8 ROW TOWNHOUSE BLOCK  
3 UNITS/ROW  
OTTAWA, ON



DRAWING TITLE	
ELEVATIONS 3	
DATE: MARCH 14, 2024	SCALE: 3/16" = 1'-0"
DRAWN BY: MW	FILE NAME: R23-00306
CHECKED BY: SW	DWG NO.: A4.2