

PLANT MATERIAL SCHEDULE						
CODE	BOTANICAL NAME	COMMON NAME	QTY.	SIZE	REMARKS / (N) NATIVE	
DECIDUOUS TREES						
AC	ACER CAYMANENSIS	SHADY OAK SERVICEBERRY	3	50cm cal	B&B, single-stem / N	
AL	ALBIS Y. FREEMANI JEFFERSONED	ALUTIAN BLACK MAPLE	2	50cm cal	B&B, single-stem / N	
CO	CELTIS OCCIDENTALIS	COMMON HICKBERRY	1	50mm cal	B&B, single-stem / N	
OR	QUERCUS RUBRA	RED OAK	1	50mm cal	B&B, single-stem / N	
SHRUBS						
HAA	HYDRANGEA ARBORESCENS	ANNABELLE HYDRANGEA	6	50cm ht	potbed, 100cm o/c	
HFG	HYDRANGEA PANCICULATA	PEE GEE HYDRANGEA	10	50cm ht	potbed, 100cm o/c	
PO	GRANIFLORA	COMMON NINEBARK	12	50cm ht	potbed, 100cm o/c / N	
RS	ROSA BLANDA	SHRUB ROSE	31	50cm ht	potbed, 100cm o/c / N	
SB	SPIRAEA JAPONICA FROEBELII	FROEBEL SPIRAEA	13	50cm ht	potbed, 100cm o/c	
PERENNIALS						
Rut	RUTEDICIA ligula Odontum	BLACK EYED SUSAN	10	15 cm pot	plant 60cm o/c	
ORNAMENTAL GRASSES						
Cal	CALAMAGROSTIS x acutiflora	KARL FOERSTER REED GRASS	37	15cm pot	plant 75cm o/c	
Karl Foerster						

GENERAL NOTES

1. This drawing shall be used in conjunction with all relevant Architectural, Engineering and related Drawings and Documents.
2. Refer to Engineering Drawings for Grading and Servicing.
3. Refer to Architectural Drawings for Site layout.
4. Contractor shall coordinate with the relevant water services utilities by consulting Municipal Authorities and Utility companies and shall be responsible for adequate protection from damage during construction.
5. Plant material shall be No. 1 Grade and shall comply with the requirements of the National Standard for Horticultural Production (1995 edition), published by the Canadian Nursery Trades Association.
6. Plant Material locations are **Schematic / Approximate** only. Contractor shall stake out locations on site prior to work.
7. Contractor shall quarantine all plant material for a period of one (1) full year from the date of final acceptance.
8. **Struts** shall be planted in a continuous prepared bed of 450mm depth planting soil mix covered over with a woven polypropylene weed control fabric. (**LAUNDSCAPE**)

EXISTING TREE
TO BE RETAINED
(Refer to TCEPPLAN 1.102)
CRZ (Critical Root Zone)

PROPOSED REDUNDANT TREE

PROPOSED SHRUBS, PERENNIALS,
ORNAMENTAL GRASSES

PROPOSED AGGREGATE
MAINTENANCE STRIP

PROPOSED UNIT PAVING

PROPOSED BICYCLE PARKING
DIMENSION: 1.8m x 1.8m

9 **Perennials and Ornamental Grasses** shall be planted in a continuous prepared bed of 450mm depth, planting soil mix. (**USE NO WEED CONTROL FABRIC**)

10 Sod Grass to be **reactive 12mm** (approx. Sod S-1, No. 1 quality) growing to the Canadian Nursery Sod Grasses Specification.

11 Renstate all areas damaged or disturbed beyond the limit of Work.

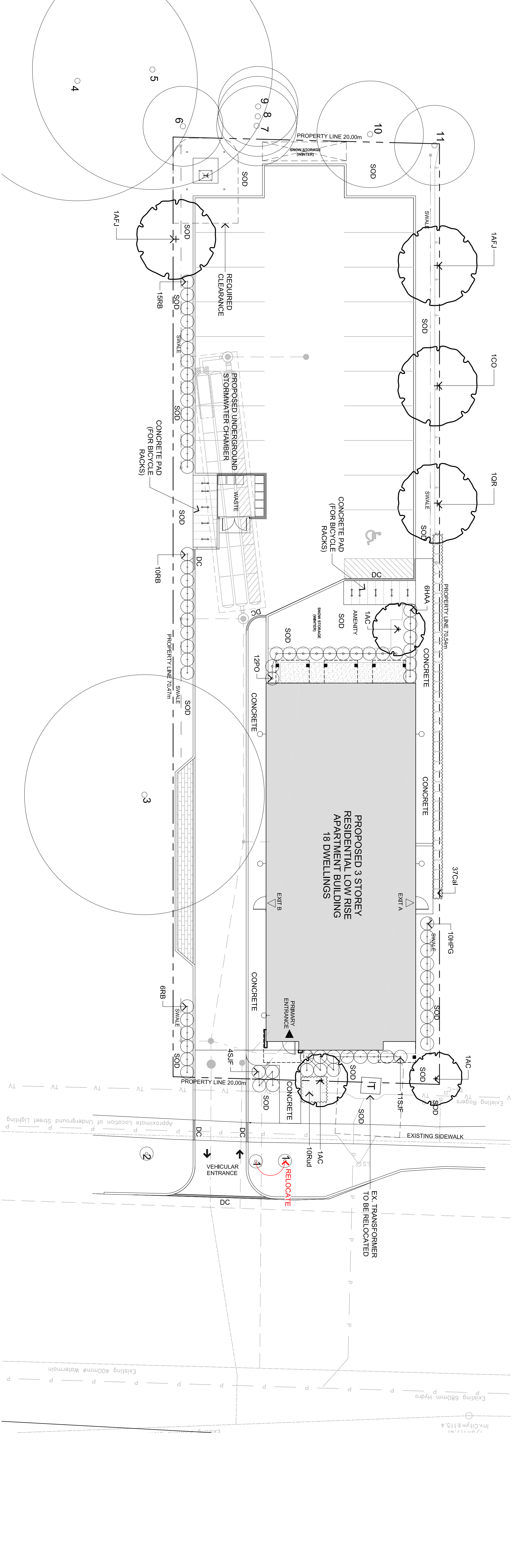
12 Plant Material substitutions shall not be permitted without written approval from the Consultant.


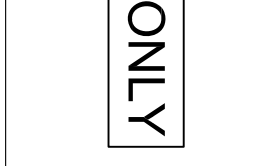
13 Commence work at the minimum of **48hrs** prior to proceeding landscape work and any required Field Reviews.

14 **THIS PLAN HAS BEEN PREPARED FOR MUNICIPAL SITE PLAN APPROVAL ONLY, AND MAY NOT BE USED FOR ANY OTHER PURPOSE.**

TREE CANOPY COVER DATA
(PROJECTION ASSUMED AT 40° N LATITUDE)

TREE CANOPY COVER DATA (PROJECTION ASSUMED AT 40 YR. MATURITY)	
LARGE DECIDUOUS TREES: 10m Dia, Spread 70cm ² per x 4 = 312m ²	
SMALL DECIDUOUS TREES: 5m Dia, Spread 20m ² per x 3 = 60m ²	
EXISTING TREE CANOPY COVER	Area: 139m ²
TOTAL TREE CANOPY COVER: 97m ²	
TOTAL SITE AREA minus BLDG. FOOTPRINT: 1102.6m ²	
% TREE CANOPY COVER: 49.0	



Signed _____

no.	date	revision
1.	JULY 18/24	ISSUE FOR ZBA
2.	SEPT 18/24	ISSUE FOR SPA
3.	MAR 26/25	PER CITY COMMENTS (I)
4.	JULY 22/25	PER CITY COMMENTS (2)

FOR APPROVAL ONLY

File No. D07-12-24-0167 / Plan No. 19298