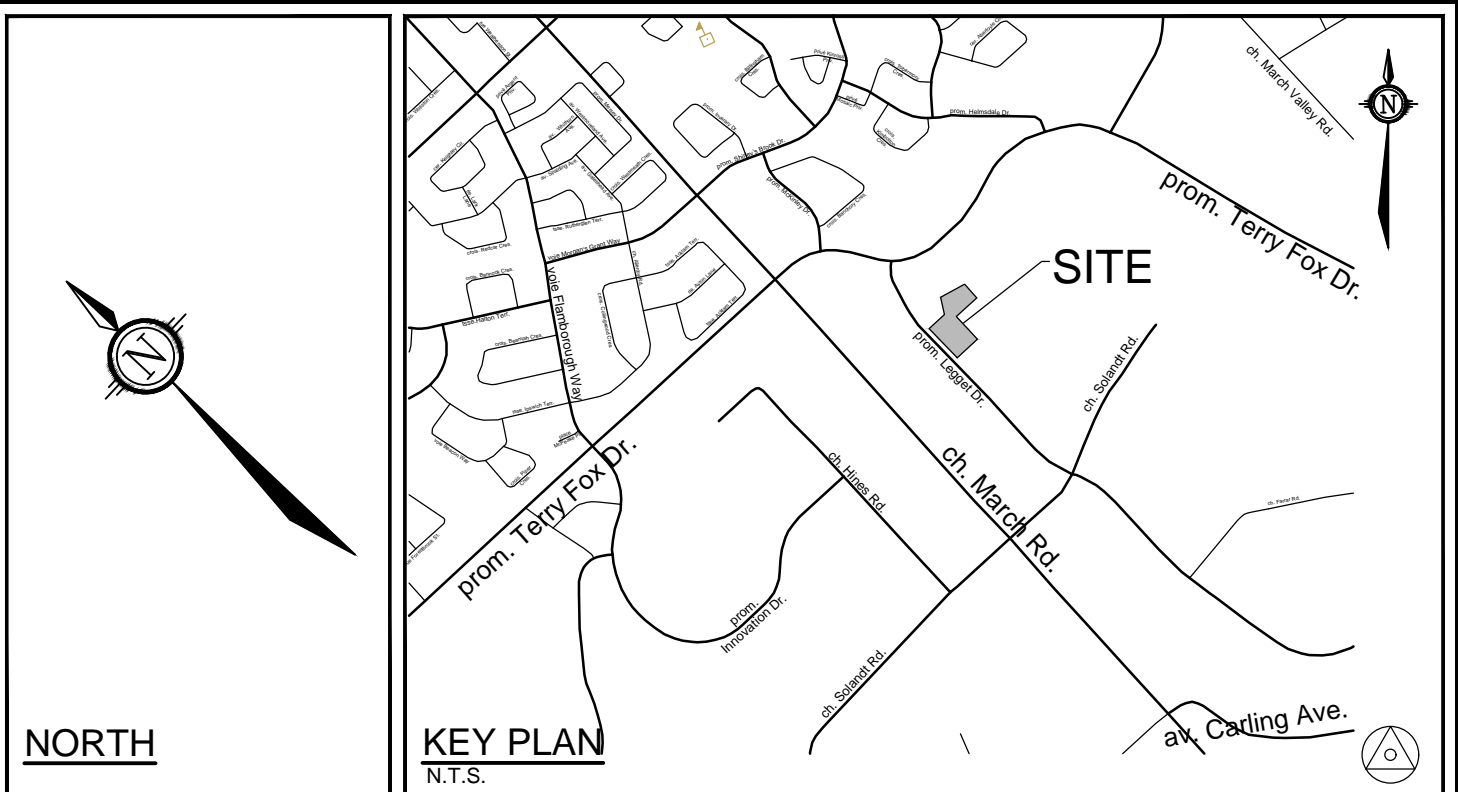


CITY DETAILS
Related details from City of Ottawa Standard Tender Documents
Volume No. 2 Standard Detail Drawings.
SC4. Typical Concrete Sidewalk in Boulevard
SC5. Sidewalk Construction Joints
SC7.1 Curb Return Entrances - Uncontrolled Intersections

NOVATECH DETAILS
Found on Sheet TCR 1.
D0. Tree Protection Fence
Found on Sheet L2.
D1. Standard Deciduous Tree Planting
D2. Shrub and Perennial Planting
D3. Bike Layout
D4. Picket Fence Detail
D5. Deck Detail - Plan
D6. Deck Detail - Section
D7. BBQ Area Detail
D8. Pavers on Granular Base



- LEGEND**
- 3-D1 DETAIL SHEET # NOVATECH OR CITY DETAIL NUMBER SEE LIST FOR CODE
 - PROPERTY LIMIT
 - PROPOSED CONCRETE
 - PROPOSED PAVING - TYPE A PAVERS
 - PROPOSED PAVING - TYPE B STONE SLABS ON PEDESTAL
 - PROPOSED DECK, SEE D5 & D6
 - CLEAR STONE
 - SOD
 - PROPOSED DECIDUOUS TREE
 - PROPOSED SHRUBS
 - PERENNIALS & ORNAMENTAL GRASS
 - EXISTING TREE TO REMAIN
 - TREE PROTECTION FENCE
 - PICKET FENCE, SEE D4
 - WOOD PRIVACY FENCE
 - PROPOSED BUILDING LINE
 - OUTLINE OF BUILDING CANOPY ON LEVEL 2
 - APPROXIMATE LOCATION FOR PROPOSED IRRIGATION CONDUITS (REFER TO GP)
 - BENCHES
 - DECK FURNITURE
 - SNOW STORAGE AREA
- GENERAL**
- Read and interpret this drawing/ drawing set in conjunction with all the contract details and specifications, including related civil, utility, structural, architectural, mechanical, electrical, environmental, geotechnical, and survey information.
 - The Contractor is to determine the exact location, size, material, and elevation of all existing utilities prior to commencing construction. Protect and assume responsibility for all existing utilities regardless of being shown on the drawings.
 - It is essential to use the plans and details in conjunction with the specifications and notes.
 - Do not scale drawings. Work to dimensions only.
 - Protect all existing and retained vegetation for the duration of construction according to the contract details and specifications.
 - Reinstate all areas and items damaged or disturbed, beyond the Limit of Work, because of construction activities, including but not limited to construction staging areas, haul roads, stockpile areas, etc. to the satisfaction of the Consultant. Unless otherwise noted, Contractor is to reinstate all areas to pre-construction condition or better to the satisfaction of the Contract Administrator.
- PLANTING**
- Plant material to be No. 1 Grade and is to comply with Canadian Standards for Nursery Stock (latest edition) published by the Canadian Nursery Landscape Association.
 - Use structurally sound plant material with strong fibrous root system free of disease, defects, and injuries. Use trees with straight trunks, well and characteristically branched for species. Obtain approval from consultant of plant material at source prior to digging. All trees and shrubs to be container grown, potted, WB or BB, as indicated on Plant List. Bare root plants are only acceptable for certain species and as approved by the Landscape Architect.
 - Plant material substitutions are not permitted without the written approval from the Consultant, with 48 hours notice, prior to shipping plant material.
 - Plant locations are schematic / approximate only. Contractor is to stake out locations on site for approval by the Landscape Architect prior to installation.
 - The illustrated number of plants shown in the Planting Plan supersedes the estimated number in the Plant List. Contractor to report any discrepancies to the Landscape Architect prior to installation. Contractor will assume full responsibility if the Landscape Architect is not notified.
 - Ensure trees are thoroughly watered following planting. Monitor material and ensure adequate moisture until acceptance.
 - In heavy clay or poorly drained soils, set root ball with root collar 75-100mm higher than finished grade.
 - Approved topsoil depths are as follows:
 - Plant Beds - 450mm continuous depth. Applies to shrubs, perennials, vines, and groundcovers.
 - Sod/ Seed Areas - 100mm depth.
 - Reforestation - 300mm depth.
 - Sod to be No. 1 Kentucky Bluegrass Sod grown from minimum mixture of 3 Kentucky Bluegrass cultivars. Quality and source are to comply with Canadian Standards for Nursery Stock, Section 17, (latest edition) published by the Canadian Nursery Landscape Nursery Landscape Association.
 - Apply the following mineral fertilizer unless soil tests show other requirements:
 - Plant Beds - (8-32-16), i.e. 8% Nitrogen, 32% Phosphorus, 16% Potash per manufacturer specifications.
 - Sod Areas - (8-32-16), i.e. 8% Nitrogen, 32% Phosphorus, 16% Potash at a rate of 350kg/ha.
 - Where applicable, for any plant areas with a mix of species/ cultivars notes, Contractor is to cluster like plants in groups of 3-5 and evenly distribute these in the noted area.

PLANT LIST

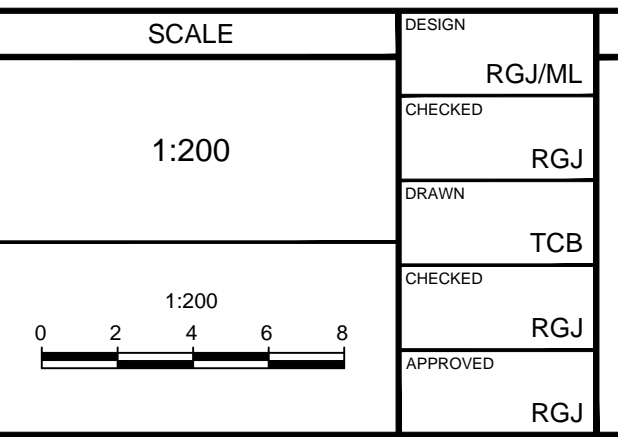
KEY	QTY	BOTANICAL NAME	COMMON NAME	SIZE	COND	SPACING	NATIVE/NON-NATIVE	OWNER
Deciduous Trees								
AFCM	1	Acer x freemanii 'Celtzam'	Celebration Maple	50mm Cal	WB	As Shown	C	Private
ARJ	2	Acer rubrum 'Autumn Radiance'	Autumn Radiance Red Maple	50mm Cal	WB	As Shown	C	Private
ARJ	1	Acer rubrum 'Autumn Radiance'	Autumn Radiance Red Maple	50mm Cal	WB	As Shown	C	City of Ottawa
AXA	2	Aamelanchier x grandiflora 'Autumn Brilliance'	Autumn Brilliance Serviceberry	50mm Cal	WB	As Shown	C	Private
CLU	2	Chieraxia kentukea (formerly Yulea)	Yskowood	50mm Cal	WB	As Shown	E	Private
PTO	4	Platanus occidentalis	American Sycamore	50mm Cal	WB	As Shown	P	Private
AXR	2	Aamelanchier x grandiflora 'Robin Hill'	Robin Hill Serviceberry	50mm Cal	WB	As Shown	C	Private
QM	2	Quercus macrocarpa	Burr Oak	50mm Cal	WB	As Shown	L	Private
Deciduous Shrubs								
Am	32	Aronia melanocarpa	Black Chokeberry	60cm Ht	PT	80cm O.C.	L	Private
Cah	35	Clethra alnifolia 'Hummingbird'	Hummingbird Summersweet	50cm Ht	PT	80cm O.C.	C	Private
Cpe	29	Comptonia perennans	Sweet Fern	40cm Ht	PT	100cm O.C.	L	Private
HAF	110	Hydrangea paniculata 'Fire Light Tasti'	Fire Light® Hydrangea	60cm Ht	PT	100cm O.C.	E	Private
Sbg	36	Sorbus betulinifolia 'Glow Girl' (Tor Gold)	Glow Girl Brindall Sorus	60cm Ht	PT	100cm O.C.	E	Private
Prg	4	Physocarpus opulifolius 'Centre Glow'	Centre Glow Ninebark	60cm Ht	PT	180cm O.C.	C	Private
AXR	33	Potentilla fruticosa 'Bella Sol'	Bella Sol Potentilla	40cm Ht	PT	60cm O.C.	E	Private
Perennials								
gms	170	Geranium macrorrhizum 'Spessart'	Spessart Cranesbill	1g	PT	40cm O.C.	C	Private
Ornamental Grasses								
cav	182	Calamagrostis acutiflora 'Avalanche'	Avalanche Feather Reed Grass	1g	PT	70cm O.C.	E	Private
ds	284	Deschampsia cespitosa	Tufted Hair Grass	1g	PT	60cm O.C.	L	Private

NOTE: (L) Local region; (C) Cultivar of local region plant; (P) Provincial; (R) Rare or non-native

NOTE:
THE POSITION OF ALL POLE LINES, CONDUITS, WATERMANS, SEWERS AND OTHER UNDERGROUND AND OVERGROUND UTILITIES AND STRUCTURES IS NOT NECESSARILY SHOWN ON THE CONTRACT DRAWINGS, AND WHERE SHOWN, THE ACCURACY OF THE POSITION OF SUCH UTILITIES AND STRUCTURES IS NOT GUARANTEED. BEFORE STARTING WORK, DETERMINE THE EXACT LOCATION OF ALL SUCH UTILITIES AND STRUCTURES AND ASSUME ALL LIABILITY FOR DAMAGE TO THEM.

Owner:
Wesley Clover International
c/o KRP Properties, 555 Legget Drive
#300, Tower B
Kanata, ON K2K 2X3
Phone: 613-591-0594

No.	REVISION	DATE	BY	No.	REVISION	DATE	BY
8.	ISSUED FOR TENDER	FEB 28/25	RGJ	7.	ISSUED FOR BUILDING PERMIT	JAN 24/25	RGJ
6.	RE-ISSUED FOR SITE PLAN SUBMISSION	JAN 14/25	RGJ	5.	RE-ISSUED FOR SITE PLAN SUBMISSION	DEC 17/24	RGJ
4.	RE-ISSUED FOR SITE PLAN SUBMISSION	NOV 29/24	RGJ	3.	RE-ISSUED FOR SITE PLAN SUBMISSION	OCT 7/24	RGJ
2.	ISSUED FOR SITE PLAN AND ZONING	SEP 13/24	RGJ	1.	ISSUED FOR COORDINATION	SEP 09/24	RGJ



FOR REVIEW ONLY

DESIGN	RGJ/ML
CHECKED	RGJ
DRAWN	TCB
CHECKED	RGJ
APPROVED	RGJ

NOVATECH
Engineers, Planners & Landscape Architects
Suite 200, 240 Michael Cowpland Drive
Ottawa, Ontario, Canada K2M 1P6
Telephone: (613) 254-9643
Facsimile: (613) 254-5867
Website: www.novatech-eng.com

LOCATION	535 LEGGET DRIVE KANATA
DRAWING NAME	LANDSCAPE PLAN
PROJECT No.	124045
REV	REV # 9
DRAWING No.	124045-L1

C:\Temp\Ap\Publish_26380\124045_L1.dwg, L1, Jul 23, 2025 - 12:39pm, bbarakae

D02-02-24-0058 & D07-12-24-0123