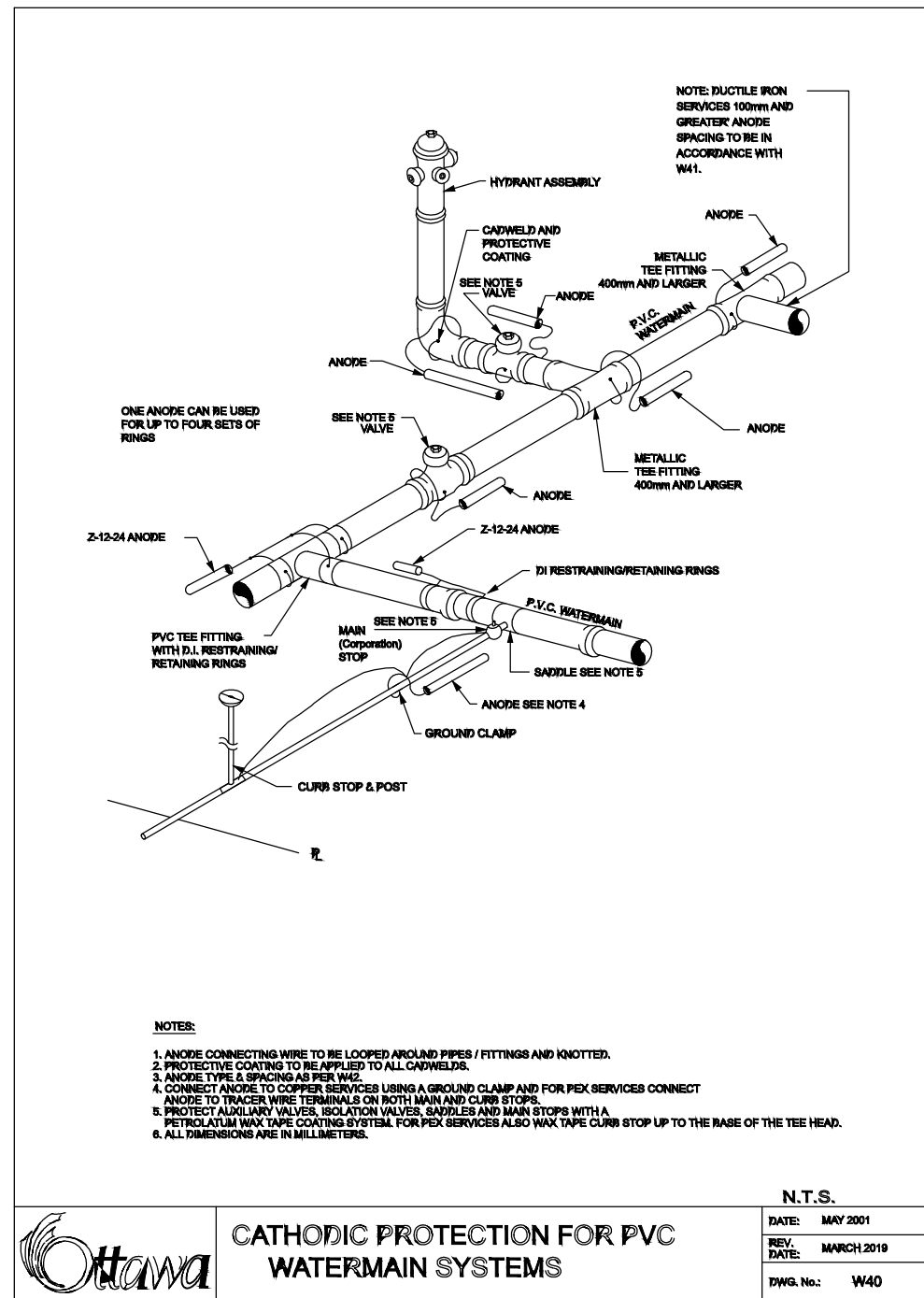


Diagram illustrating the installation of a service line over a sewer line. The diagram shows a watermain on the left, connected to a sewer line. A service line branches off the sewer line, goes up through a 2.4m earth cover, and then goes down to a catch basin or manhole. The diagram is labeled with 'WATERMAIN', 'SEWER', 'SERVICE', and 'MIN. EARTH COVER 2.4m'. There are also dimension lines indicating '300mm' for the vertical distance from the sewer to the service line and '300mm' for the vertical distance from the service line to the catch basin.

NOTES:

- WHERE SEWER IS AT SAME ELEVATION AS WATERMAIN, SERVICES CAN BE INSTALLED OVER THE SEWER WITH A MINIMUM OF 2.4m COVER
- WHERE THE 2.4m MINIMUM COVER IS NOT POSSIBLE THE SERVICE SHALL BE INSTALLED 300mm BELOW SEWER
- FOR OPEN ENDED STRUCTURES SUCH AS CATCH BASIN LEADS, OLIVERTS, ETC., INSTALLATION SHALL BE IN ACCORDANCE WITH DETAIL 923.
- ALL DIMENSIONS ARE IN MILLIMETRES UNLESS SHOWN OTHERWISE.

DATE: MAY 2001
REV: NONE
DWG. NO.: W38



FINAL BACKFILL
SEE 3 & 4, F-2100

PIPE EMBEDMENT MATERIAL

2400 (MINIMUM)

300

COMPACTED IN ACCORDANCE WITH D-029

SEE NOTE 5

SEE NOTE 4

SEE NOTE 4

CONDITION	WATERMAN	SERVICES
EARTH	100 MM	100 MM
ROCK	300 MM	100 MM

NOTES:

- PIPE EMBEDMENT MATERIAL - GRANULAR 'A'.
- FINAL BACKFILL - APPROVED NATIVE MATERIAL, OR SELECT SUBGRADE IN ACCORDANCE WITH F-2100
- ALL DIMENSIONS ARE IN MILLIMETRES UNLESS SHOWN OTHERWISE.
- | OUTSIDE DIA. | CLEARANCE (MM) |
|--------------|----------------|
| 900 & LESS | 450 |
| OVER 900 | 500 |
- WHEN APPROVED BY THE CONTRACT ADMINISTRATOR, POOR SOILS SHALL BE EXCAVATED TO CREATE A FOUNDATION THAT SHALL BE FILLED TO THE BEDDING WITH GRANULAR 'B'.

DATE: MAY 2001

REV. DATE: MARCH 2016

DWG. No.: W17

