

40 YEAR CANOPY CALCULATION:

- 398,900 m2 site area
- 19 Large deciduous trees proposed (154m2 ea.)
- 8 coniferous trees proposed (79m2 ea.)
- 34 small deciduous trees proposed (7m2 ea.)
- Existing Tree Canopy (375,160m2)

=378,956m2 canopy cover = 95% canopy cover

*Large deciduous tree calculated at 14m spread, large coniferous trees at 10m spread, small deciduous tree at 3m spread.

- GENERAL NOTES:**
- IT IS THE RESPONSIBILITY OF THE APPROPRIATE CONTRACTOR OR OFFICIAL TO REPORT ANY ERRORS, OMISSIONS OR DISCREPANCIES ON THIS PLAN WITH ACTUAL SITE CONDITIONS TO THE LANDSCAPE ARCHITECT BEFORE PROCEEDING WITH CONSTRUCTION.
 - THE CONTRACTOR IS TO NOTIFY ALL UTILITY COMPANIES AND AUTHORITIES PRIOR TO ANY EXCAVATION AND ASCERTAIN LOCATIONS OF UNDERGROUND SERVICES.
 - THE CONTRACTOR IS TO REINSTATE ALL AREAS AND ITEMS DAMAGED AS A RESULT OF CONSTRUCTION ACTIVITY.
 - THE CONTRACTOR IS TO COMPLY WITH ALL PERTINENT CODES AND BY-LAWS.
 - THE CONTRACTOR IS TO MAINTAIN A POSITIVE SURFACE RUN-OFF THROUGHOUT THE ENTIRE CONSTRUCTION PERIOD.
 - THE LANDSCAPE ARCHITECT IS NOT RESPONSIBLE FOR SUBSURFACE CONDITIONS.
 - THE CONTRACTOR IS TO IDENTIFY ALL EXISTING TREES TO REMAIN ON SITE WITH THE LANDSCAPE ARCHITECT PRIOR TO CONSTRUCTION.
 - THE CONTRACTOR IS TO STAKE THE PROPOSED LOCATION OF ALL PLANT MATERIAL IN CONJUNCTION WITH THE LANDSCAPE ARCHITECT PRIOR TO CONSTRUCTION.
 - MINIMUM DISTANCES FOR SELECTED DECIDUOUS TREES ARE AS FOLLOWS:
 - 9.1. BUILDING FOUNDATIONS - 7.5M
 - 9.2. SIDEWALKS - 1.5M
 - 9.3. PUBLIC STREETS - 2.5M
 - 9.4. UNDERGROUND INFRASTRUCTURE - 2.0M
 - ALL TREES WITHIN 1M OF UNDERGROUND UTILITY TRENCHES ARE TO BE EXCAVATED BY HAND.
 - REMOVE ALL PROTECTIVE WRAPPING FROM TREE TRUNKS AFTER INSTALLATION.
 - STAKING OF TREES SHALL ONLY BE PERFORMED IF NECESSARY.
 - ENSURE THAT MULCH IS PULLED BACK A MINIMUM DISTANCE OF 75MM FROM BASE OF TREE TRUNK.

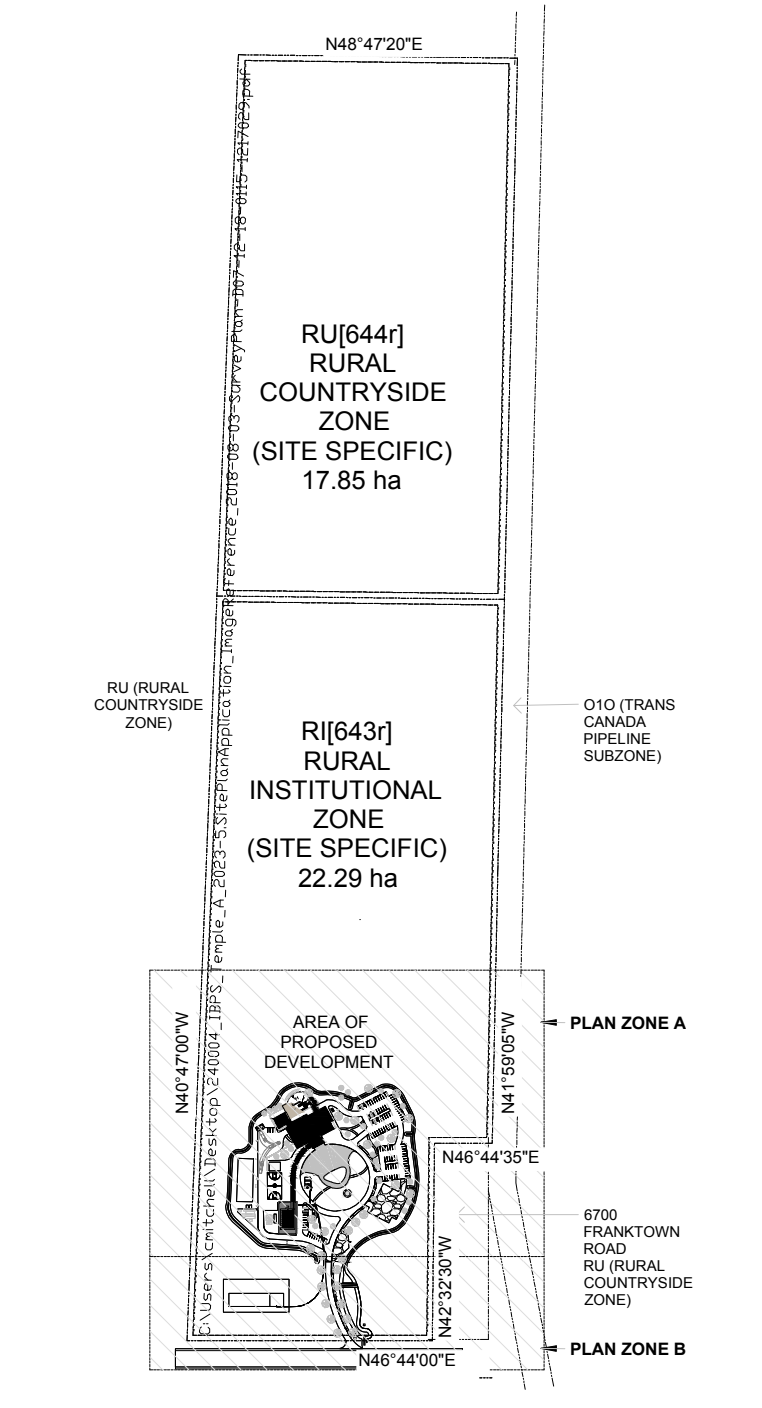
- LEGEND**
- PROPOSED DECIDUOUS SHADE TREE (LARGE) - 30m3 SOIL VOLUME AT A 1.5m DEPTH
 - PROPOSED DECIDUOUS FLOWERING TREE (SMALL) - 25m3 SOIL VOLUME AT A 1.5m DEPTH
 - PROPOSED CONIFEROUS TREE (LARGE) - 25m3 SOIL VOLUME AT A 1.5m DEPTH
 - PROPOSED SHRUBS
 - PROPOSED SOD
 - PROPOSED SEED
 - PROPOSED INTERLOCK PAVING
 - PROPOSED RIVERSTONE
 - PROPOSED COMPACTED GRAVEL
 - PROPOSED WETLAND SEED MIXTURE
 - EXISTING VEGETATION TO REMAIN

CLIENT
IBPS TEMPLE

CONSULTANTS
ARCHITECTS: **GRC ARCHITECTS**
47 RUE CLARENCE, SUITE 401
OTTAWA, ON. K1N 9K1
613-241-8203

CIVIL ENGINEERS:
exp Services Inc.
1-613-688-1999 | 1-613-225-7330
2650 Queensview Drive, Unit 100
Ottawa, ON K2B 8H6

SURVEYORS:
EGIS
215 MENTEN PLACE, SUITE 104
OTTAWA, ON. K2H 5C1
613-836-2184



PART LOT 19 CONCESSION 3 GOULBOURN PART 1 4R7040, EXCEPT PART 1 4R32299 CITY OF OTTAWA

No.	Issue	Date	IMAGD/DR
3	REVISED PER CITY COMMENTS	08/19/2025	ML/JL
2	ISSUED FOR SITE PLAN CONTROL	06/12/2025	LC/JL
1	ISSUED FOR SITE PLAN CONTROL	12/18/2024	LC/JL

JAMES B. LENNOX & ASSOCIATES INC.
LANDSCAPE ARCHITECTS
3332 CARLING AVE. OTTAWA, ONTARIO K3H 5A8
Tel. (613) 722-5168 Fax. (866) 343-3942

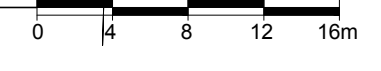
PROJECT
IBPS FO GUANG SHAN TEMPLE
6688 FRANKTOWN ROAD, RICHMOND, ON

DRAWING
LANDSCAPE PLAN

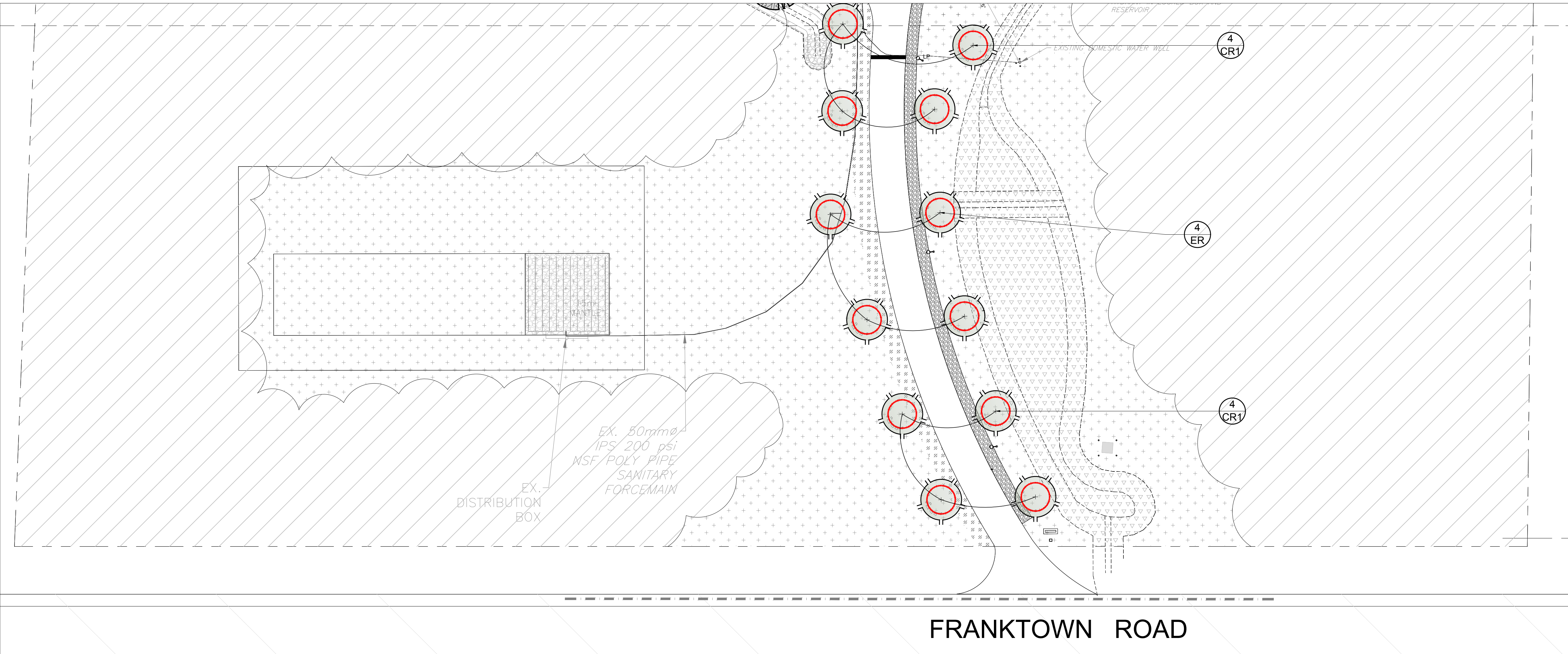
STAMP	SCALE
	AS SHOWN
	START DATE
	MARCH, 2024
PROJECT NO.	24-GRC-2378

PROJECT NORTH	DRAWING NO.
	L-100
	PLOT SIZE ARCH-D

1 LANDSCAPE PLAN AREA OF DEVELOPMENT - PLAN AREA A
L-100 SCALE 1:400



#19269



- LEGEND**
- PROPOSED DECIDUOUS SHADE TREE (LARGE)
30m³ SOIL VOLUME AT A 1.5m DEPTH
 - PROPOSED DECIDUOUS FLOWERING TREE (SMALL)
25m³ SOIL VOLUME AT A 1.5m DEPTH
 - PROPOSED CONIFEROUS TREE (LARGE)
25m³ SOIL VOLUME AT A 1.5m DEPTH
 - PROPOSED SHRUBS
 - PROPOSED SOD
 - PROPOSED SEED
 - PROPOSED INTERLOCK PAVING
 - PROPOSED RIVERSTONE
 - PROPOSED COMPACTED GRAVEL
 - PROPOSED WETLAND SEED MIXTURE
 - EXISTING VEGETATION TO REMAIN

CLIENT

IBPS TEMPLE

CONSULTANTS

ARCHITECTS: **GRC ARCHITECTS**

47 RUE CLARENCE, SUITE 401
OTTAWA, ON. K1N 9K1
613-241-8203

CIVIL ENGINEERS:

exp Services Inc.

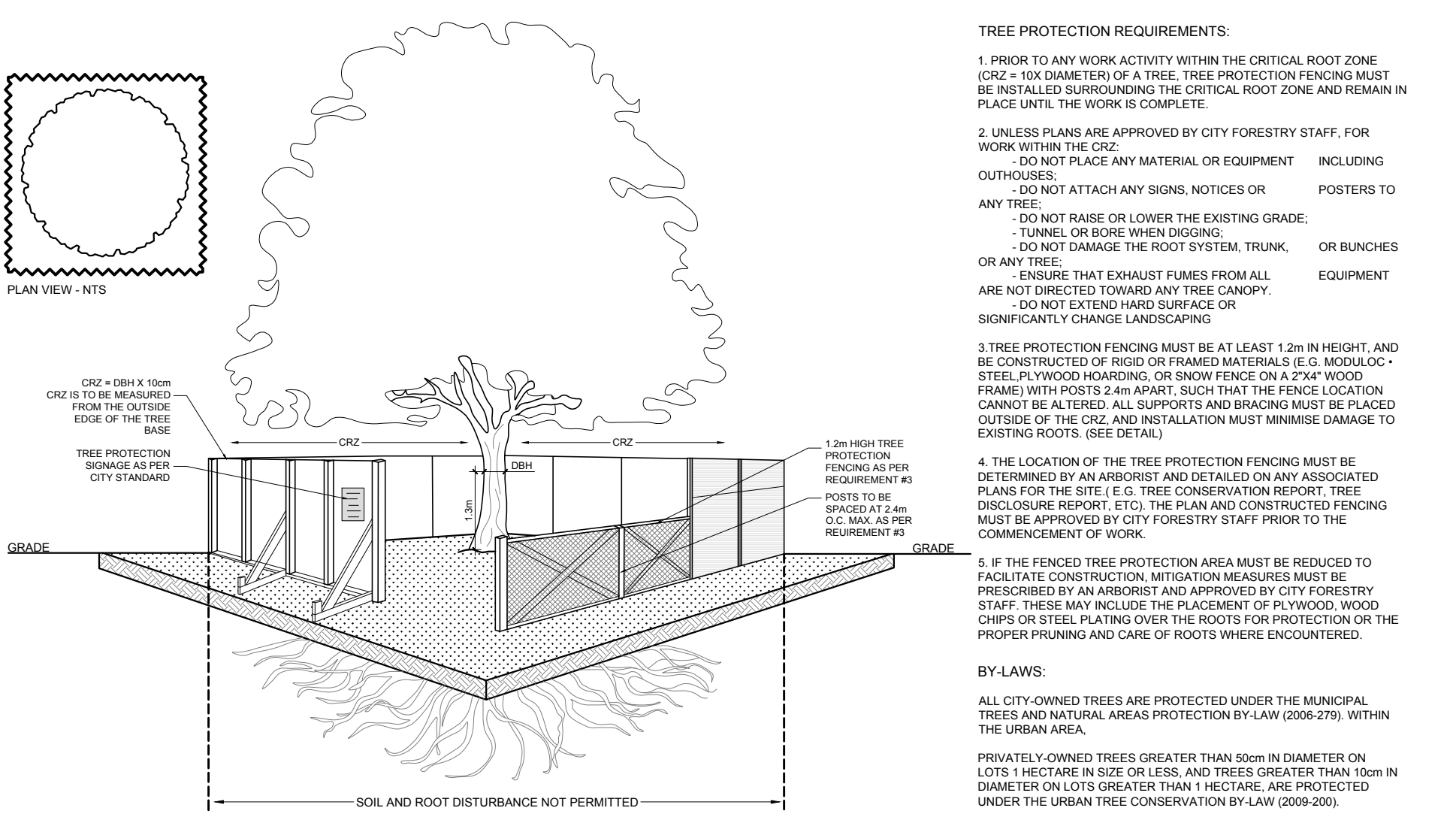
T: +1.613.688.1999 | F: +1.613.225.7330
2650 Queensview Drive, Unit 100
Ottawa, ON K2B 8H6

SURVEYORS:

EGIS

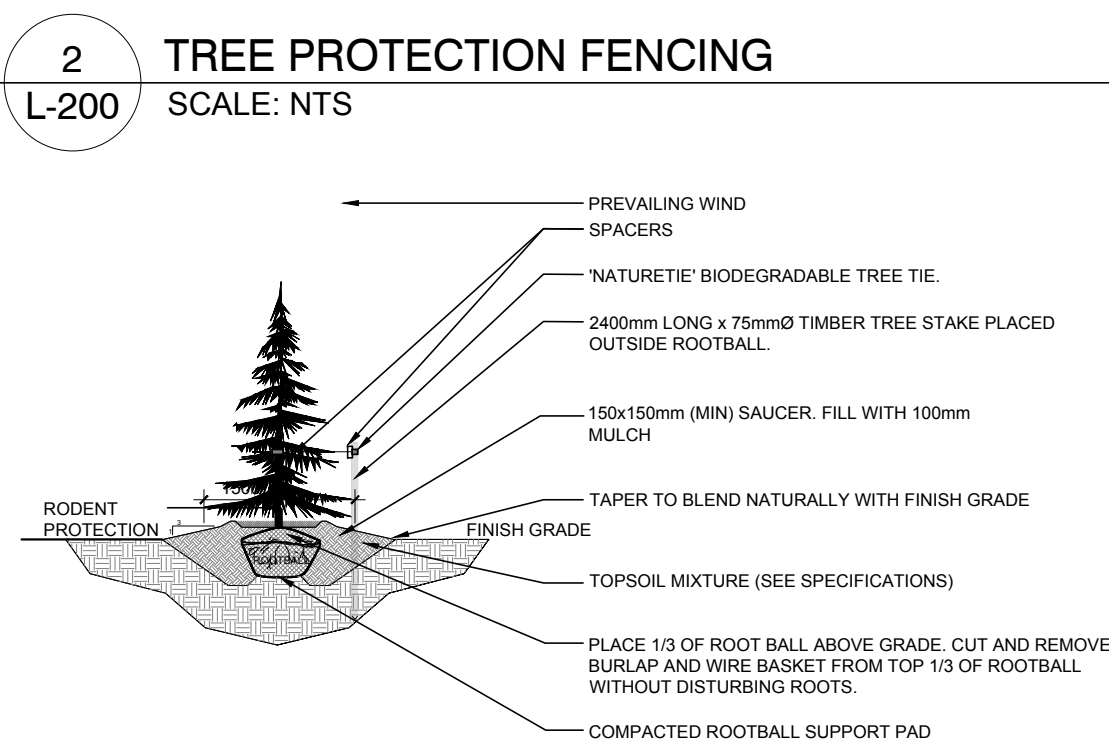
215 MENTEN PLACE, SUITE 104
OTTAWA, ON. K2H 5C1
613-836-2184

1 LANDSCAPE PLAN AREA OF DEVELOPMENT - PLAN AREA B
L-200 SCALE 1:400

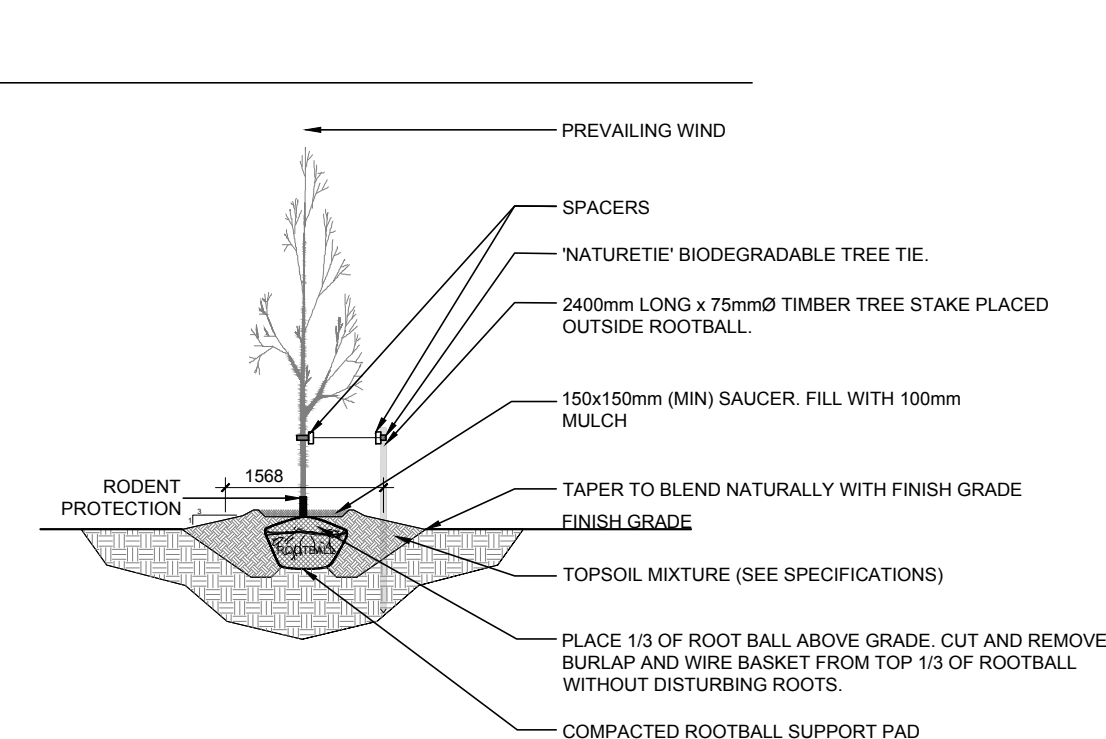


PROPOSED PLANT LIST

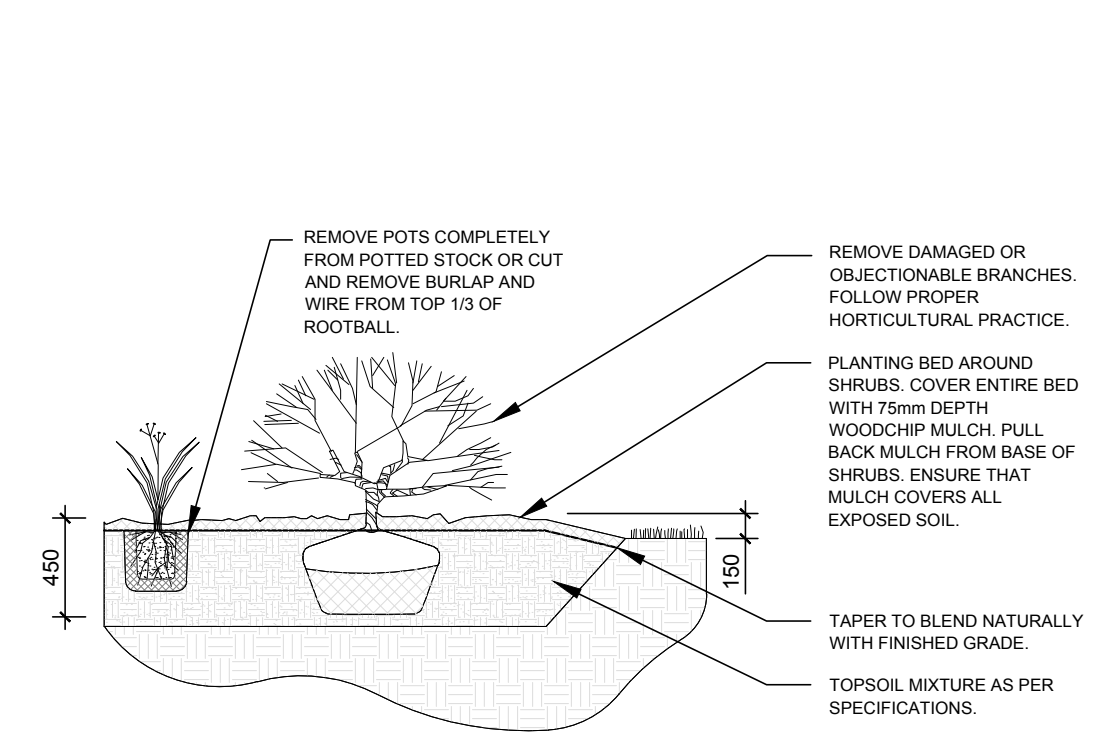
KEY	QTY	BOTANICAL NAME	COMMON NAME	SIZE	CONDITION	REMARKS
TREES						
BO	2	Quercus macrocarpa	Bur Oak	50mm cal.	B&B	Deciduous
CA	2	Catalpa speciosa	Northern Catalpa	50mm cal.	B&B	Deciduous
CE	3	Thuja occidentalis	Eastern White Cedar	2000 mm ht.	B&B	Coniferous
CR1	11	Malus 'Makamik'	Makamik Crabapple	50mm cal.	B&B	Deciduous
CR2	2	Malus 'Royalty'	Royalty Crabapple	50mm cal.	B&B	Deciduous
ER	4	Cercis canadensis	Eastern Redbud	50mm cal.	B&B	Deciduous
FM	3	Acer x freemanii	Freeman's Maple	50mm cal.	B&B	Deciduous
HA	2	Crataegus crus-galli var. inermis	Thornless Cockspur Hawthorn	50mm cal.	B&B	Deciduous
HL	5	Gleditsia triacanthos	Honey Locust	50mm cal.	B&B	Deciduous
JTL	5	Syringa reticulata	Japanese Tree Lilac	50mm cal.	B&B	Deciduous
RM	1	Acer rubrum	Red Maple	50mm cal.	B&B	Deciduous
RO	5	Quercus rubra	Red Oak	50mm cal.	B&B	Deciduous
SB	9	Amelanchier canadensis	Serviceberry	50mm cal.	B&B	Deciduous
SM	2	Acer saccharum	Sugar Maple	50mm cal.	B&B	Deciduous
WS	7	Picea glauca	White Spruce	1800 mm ht.	B&B	Coniferous
SHRUBS						
CL	80	Syringa vulgaris	Common Purple Lilac	1200mm ht.	Potted	1500 mm o.c.
DW	460	Cornus sericea	Red Osier Dogwood	800mm ht.	Potted	1200mm o.c.
RR	300	Rosa rugosa	Rugosa Rose	800mm ht.	Potted	800 mm o.c.



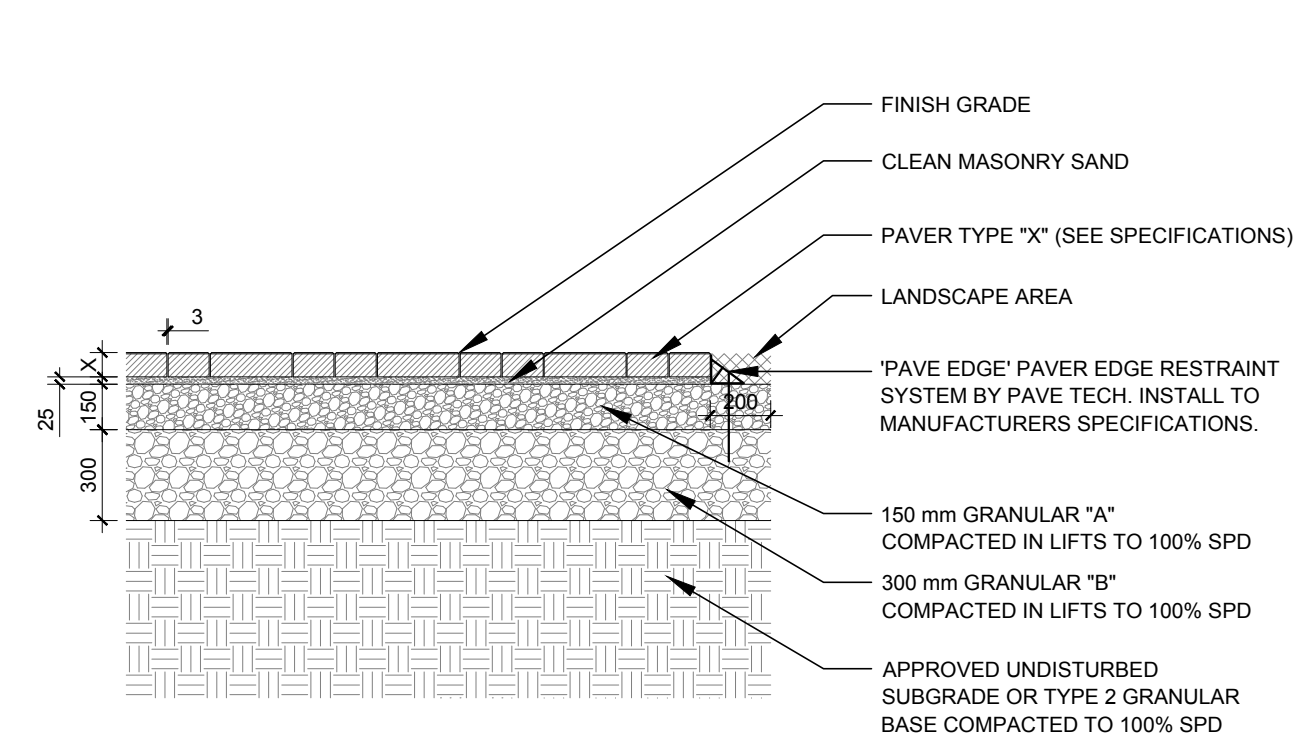
3 CONIFEROUS TREE PLANTING
L-200 SCALE: NTS



4 DECIDUOUS TREE PLANTING
L-200 SCALE: NTS



5 SHRUB AND PERENNIAL PLANTING
L-200 SCALE: NTS



6 PRECAST CONCRETE PAVERS
L-200 SCALE: NTS

3	REVISED PER CITY COMMENTS	08/19/2025	ML	JL
2	ISSUED FOR SITE PLAN CONTROL	06/12/2025	LC	JL
1	ISSUED FOR SITE PLAN CONTROL	12/18/2024	LC	JL
No.	Issue	Date	DR	CK

JAMES B. LENNOX & ASSOCIATES INC.
LANDSCAPE ARCHITECTS

3332 CARLING AVE. OTTAWA, ONTARIO K2H 5A8
Tel. (613) 722-5168 Fax. (1866) 343-3942

PROJECT

IBPS FO GUANG SHAN TEMPLE

6688 FRANKTOWN ROAD, RICHMON, ON

DRAWING

LANDSCAPE PLAN

STAMP

SCALE

AS SHOWN

START DATE

MARCH, 2024

PROJECT NO.

24-GRC-2378

PROJECT NORTH

DRAWING NO.

L-200

PLOT SIZE ARCH-D

#19269

D07-12-18-0115