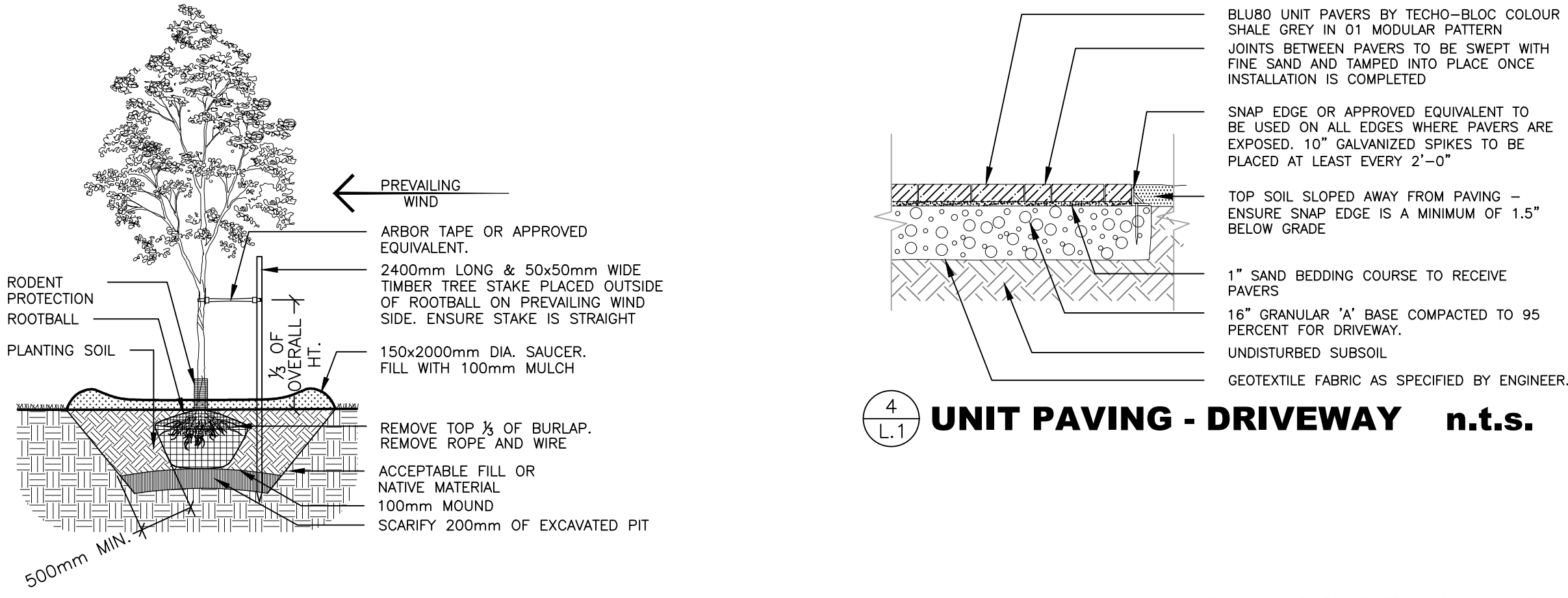
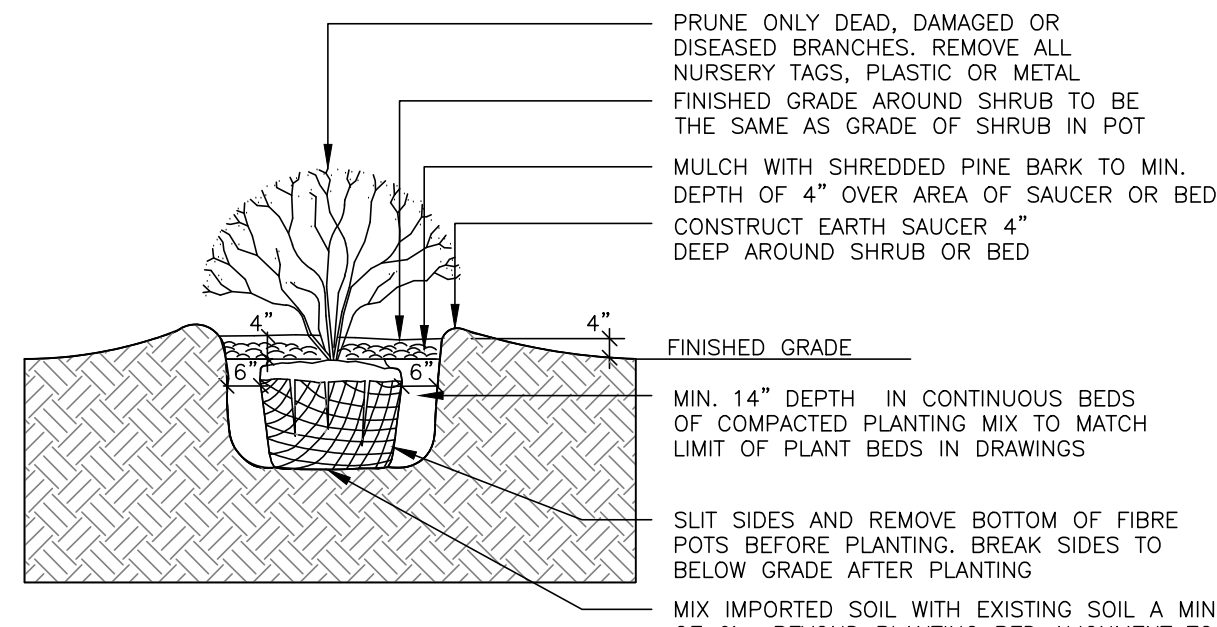


2024-03 MEMOR 1132 ST PIERRE 2025-08-13.DWG ISSUED ON August 13, 2025 2:17:25 PM

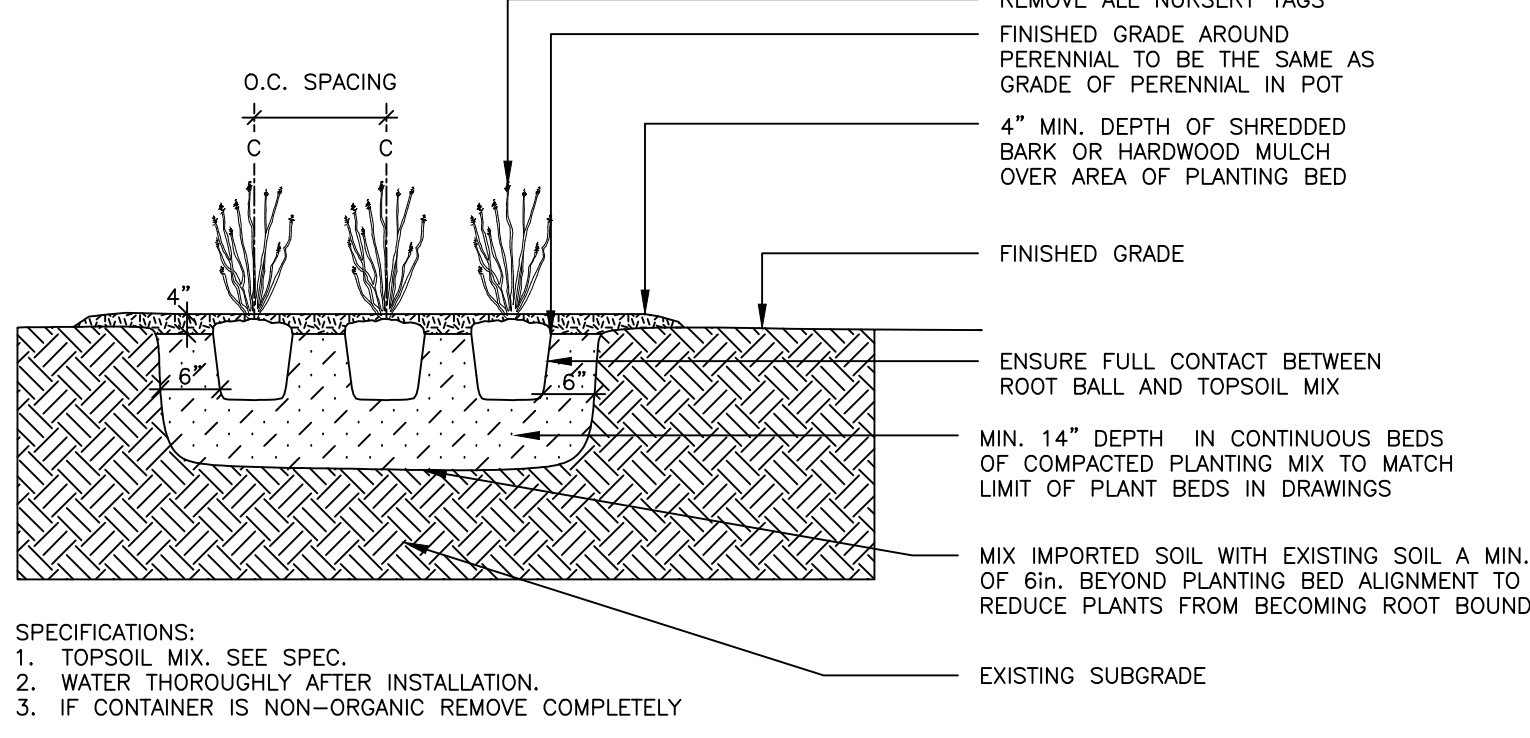


1 L.1 DECIDUOUS TREE PLANTING n.t.s.



- SPECIFICATIONS:
1. TOPSOIL MIX. SEE SPEC.
 2. SYNTHETIC BURLAP IS NOT ALLOWED.
 3. WATER THOROUGHLY AFTER INSTALLATION.
 4. CUT & REMOVE TOP 1/3 OF ROPE AND BURLAP FROM ROOT BALL. IF CONTAINER IS NON-ORGANIC REMOVE COMPLETELY.
 5. SCARIFY SUBGRADE PIT BOTTOM AND SIDES TO MIN. 6\"/>

1 L.1 SHRUB PLANTING n.t.s.



2 L.1 PERENNIAL & ORNAMENTAL GRASS PLANTING n.t.s.

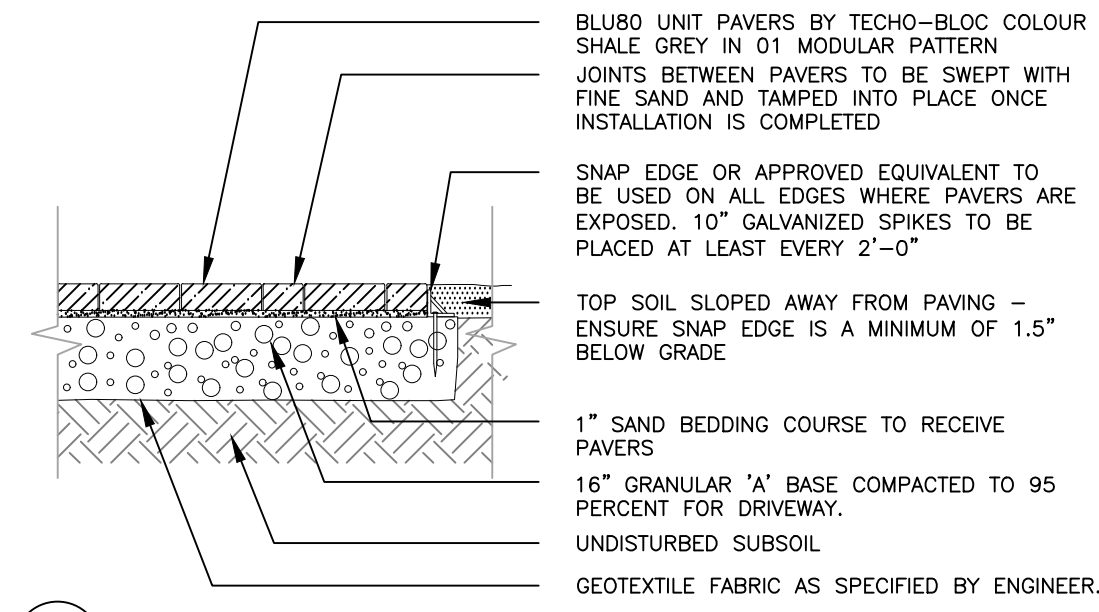
40 YEAR CANOPY CALCULATION:

Site Area:	791 m ²
Retention Contribution:	0 m ² (no existing trees retained).
Planted Tree Contribution:	Number planted: 3 small-sized deciduous tree
Canopy area contribution:	52.90 m ²
Percentage Canopy Cover:	52.90/791*100 = 6.68%

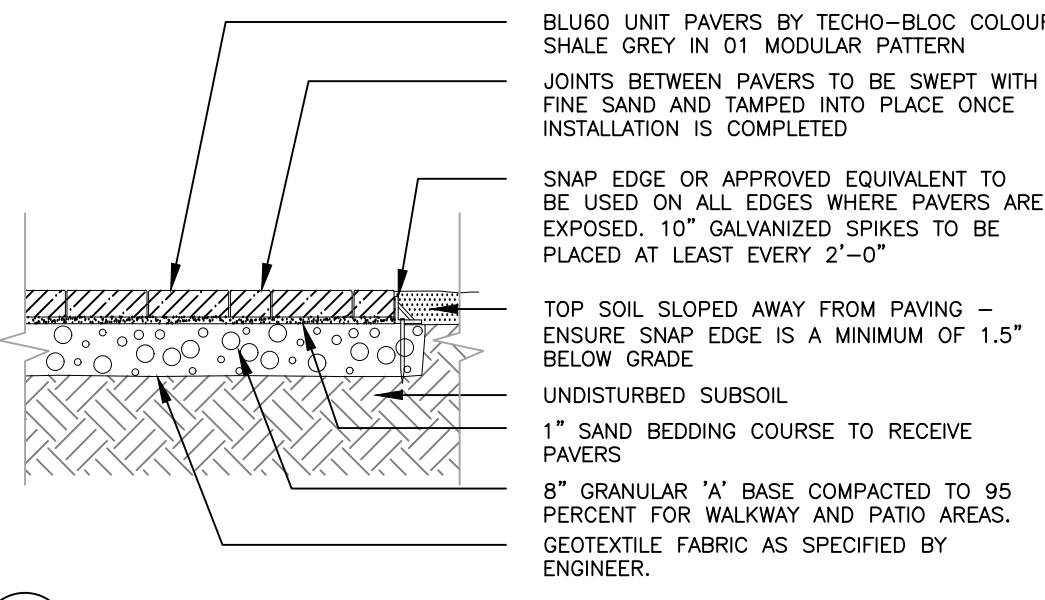
Tree planting opportunities are limited on site due to the presence of Marine Clay Soil.



BACKYARD LOUNGE AREA



4 L.1 UNIT PAVING - DRIVEWAY n.t.s.



3 L.1 UNIT PAVING - PATIO & WALKWAYS n.t.s.

LIMIT OF 1m HIGH VINYL FENCE

LIMIT OF 1.5m HIGH VINYL FENCE

INTERLOCK TO MEET FLUSH WITH ASPHALT

INTERLOCK TO MEET FLUSH WITH ASPHALT

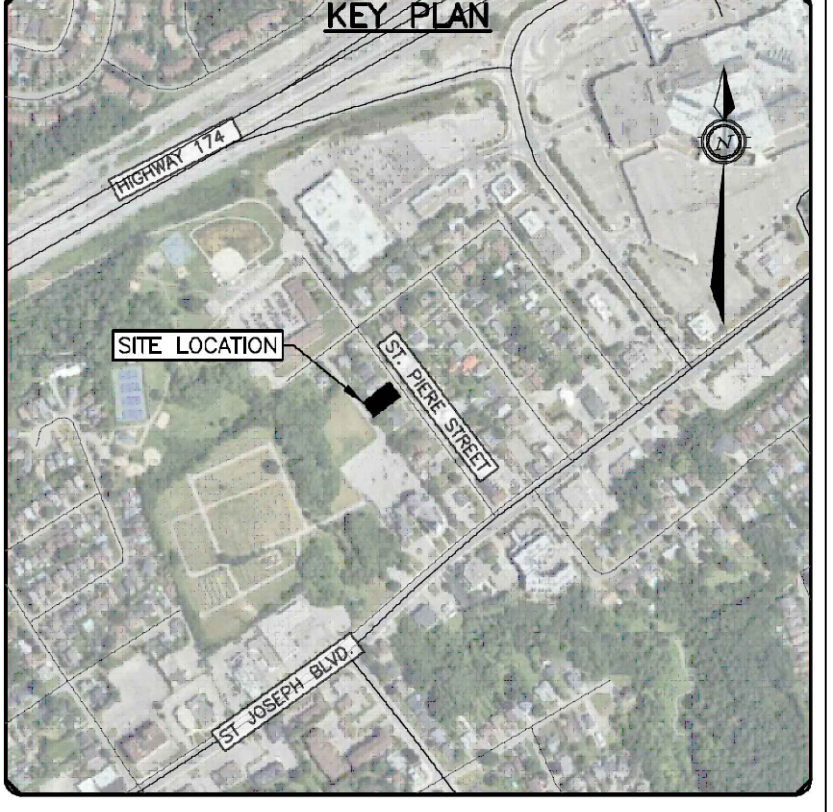
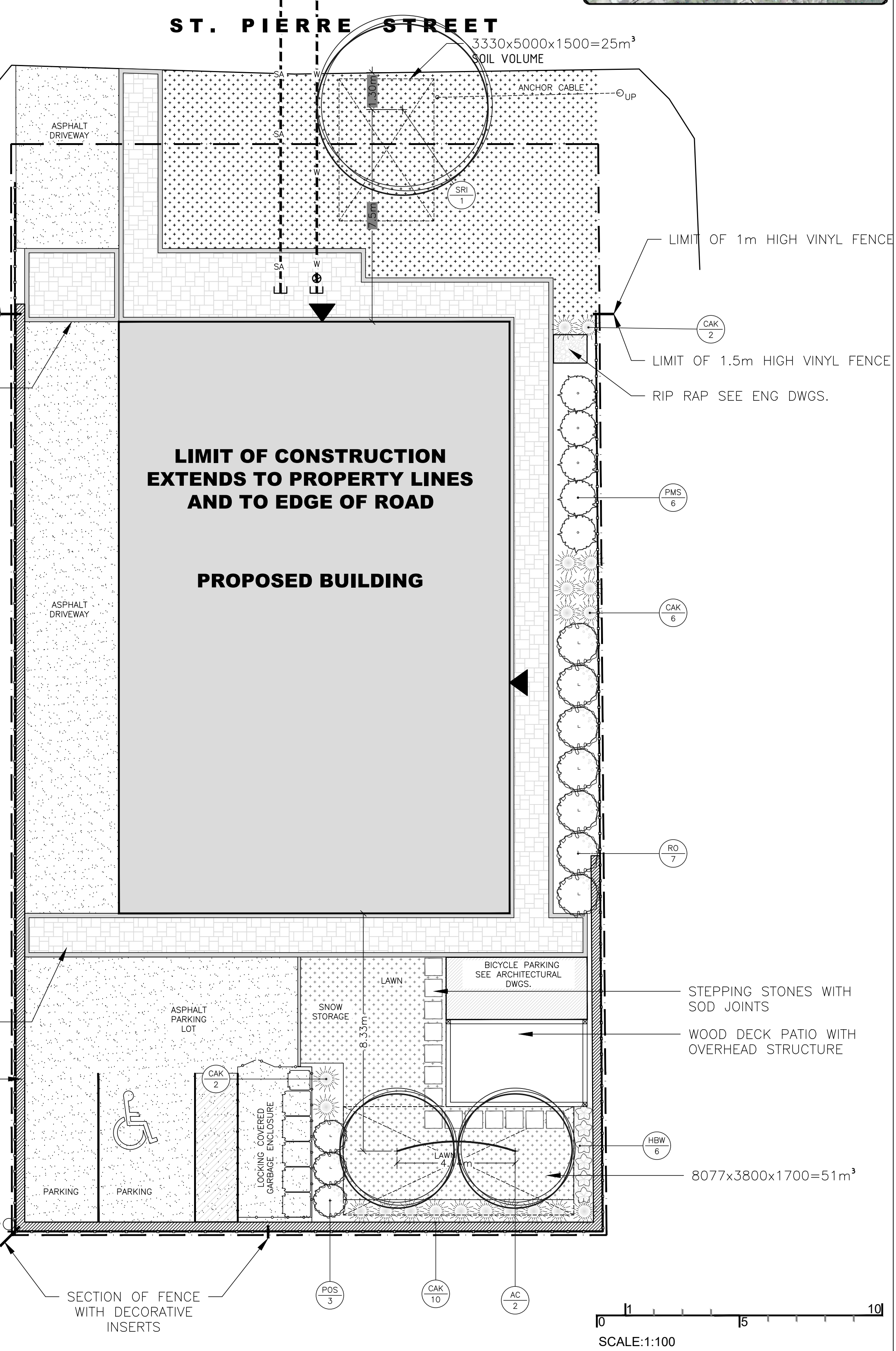
TOE WALL. REFER TO ENG. DWGS.

Plant List 1132 St Pierre Street (on private property)								13-Aug-25
Orleans ON								
Trees								
Key	Qty	Botanical Name	Common Name	Size	Cdn	Notes	Ultimate size	
AC	2	Amelanchier canadensis	Serviceberry	45mm	WB	small tree	6m ht 4m spr	
Shrubs								
Key	Qty	Botanical Name	Common Name	Size	Cdn	Notes		
PMS	6	Pinus mugo 'Slowmound'	Slowmound Mugo Pine	50 cm spr	5 galpot			
RO *	7	Rubus odoratus	Flowering Raspberry		2 gal pot	plant 5' o.c.		
POS	3	Physocarpus opulifolius 'Sumerwine Ninebark'	Sumerwine Ninebark		3gal pot	shrub		
Perennials/Grasses/Groundcovers								
Key	No	Botanical Name	Common Name	Size	Cdn	Notes	Revisions	
CAK	21	Callamagrostis acutifolia Karl Forester'	Feather Reed Grass	1 gal pot	plant 32" o.c.			
HBW	7	Hosta Blue Wedgewood	Wedgewood Hosta	1 gal pot	plant 24" o.c.			

Plant List 1132 St Pierre Street (on city property) 13-Aug-25
Orleans ON

Trees		Botanical Name	Common Name	Size	Cdn	Notes	Ultimate size
Key	Qty	Syringa reticulata 'Ivory Silk'	Ivory Silk Lilac Tree	45mm	WB & HB	small tree	7.5m ht 6m spr

* indicates native plant material
** mature tree canopy as referenced from www.nvknurseries.com
*** WB & HB indicates in a wire basket and high branched



- LEGEND**
- PROPOSED DECIDUOUS TREE
 - PROPOSED SHRUBS
 - PROPOSED PERENNIALS
 - PROPOSED GRASSES
 - LAWN AREA
 - INTERLOCKING PAVERS
 - ASPHALT
 - NEW VINYL FENCE
 - PROPERTY LINE
 - PRECAST STEPPING STONES WITH SOD JOINTS

(L+D) LALANDE & BOYLE ARCHITECTS INC.
www.lplusd.com
Tel: 613.233.2800
Fax: 613.233.5008
159 Holland Ave.
Ottawa, Ontario K1V 6Y2

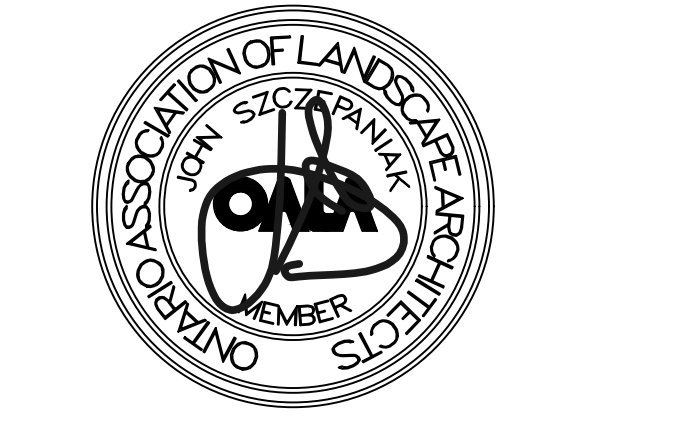
Jain
7405 East Danbro Crescent, 2nd Floor
Mississauga, Ontario, L5N 6P8
Tel: 905 285 9900, Fax: 905 567 5246
Email: mail@jainconsultants.com

exp. EXP SERVICES INC.
1-877-666-1887 • 416-225-0500
200 Catherine Court, Unit 105
Ottawa, ON K2B 6H6
Canada
• BUILDINGS • EARTH & ENVIRONMENT • ENERGY •
• INFRASTRUCTURE • SUSTAINABILITY •

ENTUITIVE
135 Laurier Avenue West, Suite 518
Ottawa, ON K1P 5J2
t: 343 308 9274

No.	Date	Revision note
15	Aug 13/25	Tree added to R.O.W. requested by City
14	July 24/25	Enlarged bicycle storage updated
13	May 21/25	Planting adjusted in front of building
12	May 15/25	Updates as per eng. dwgs.
11	April 16/25	Rear parking layout updated
10	Mar 04/25	Bench and sign at entry removed
9	Jan 14/25	Trees in rear garden revised
8	Dec 10/24	Issued for re-submission
7	Dec 09/24	Tree coverage calculation added
6	Dec 06/24	Updates to amenities area
5	Oct 31/24	Updates to planting
4	Oct 25/24	Updates to parking area

John K. Szczepaniak
LANDSCAPE ARCHITECT
B.L.A. (O.N.T.A.)
tel: (613) 731-2777 fax: (613) 731-6989
e-mail: jszka@rogers.com

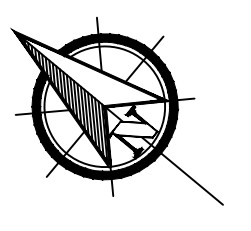


Pulse Societies LTD.
Orleans Development - PRR
1132 St. Pierre,
Ottawa, ON - K1C 1L5

Landscape Plan

CHK: JKS
DRW: EK
DATE: July 08, 2024
ID: 2024-03
SCALE: 1:100

L1



FILE NUMBER D07-12-24-0080 / PLAN NUMBER 19277