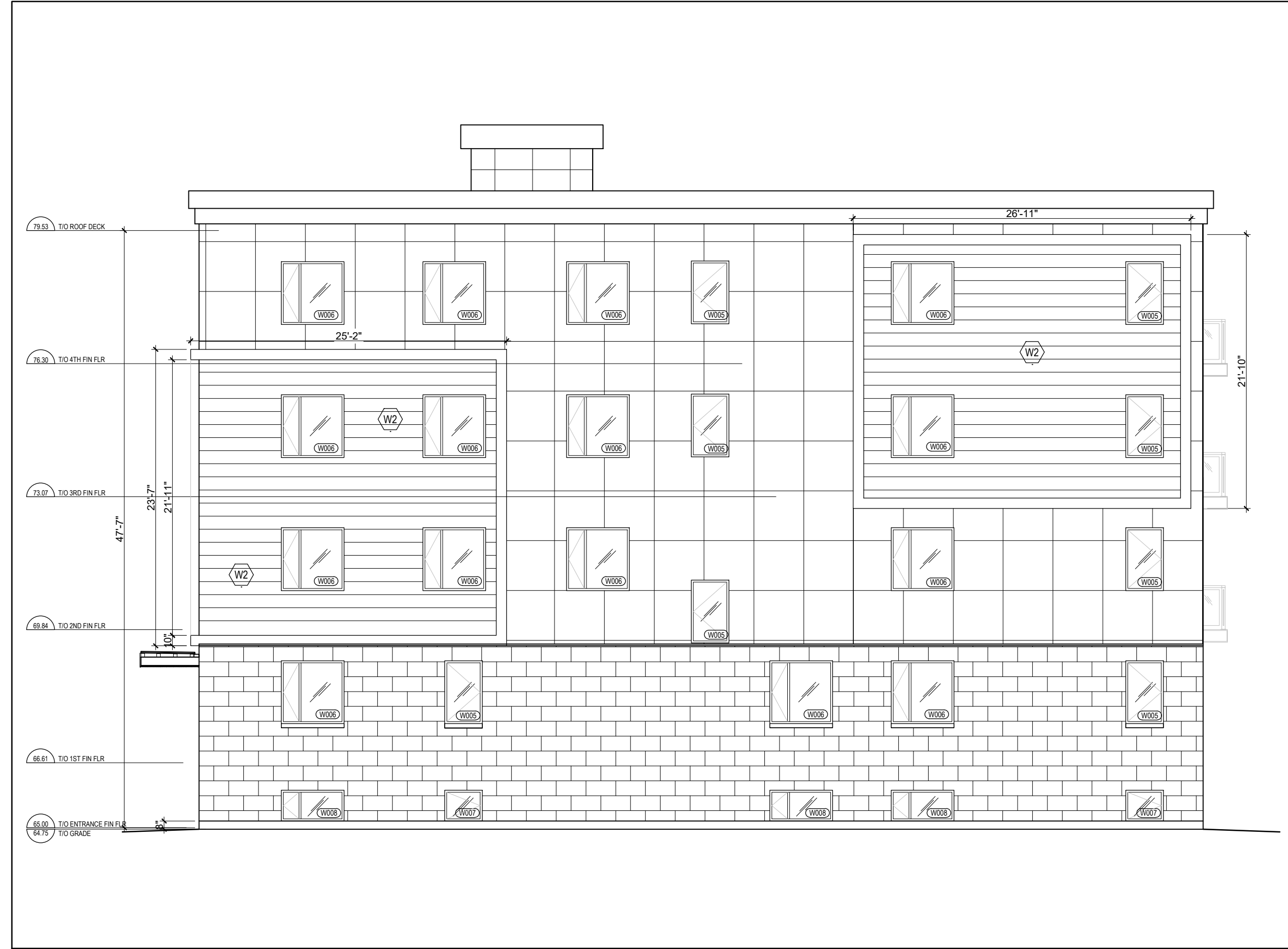


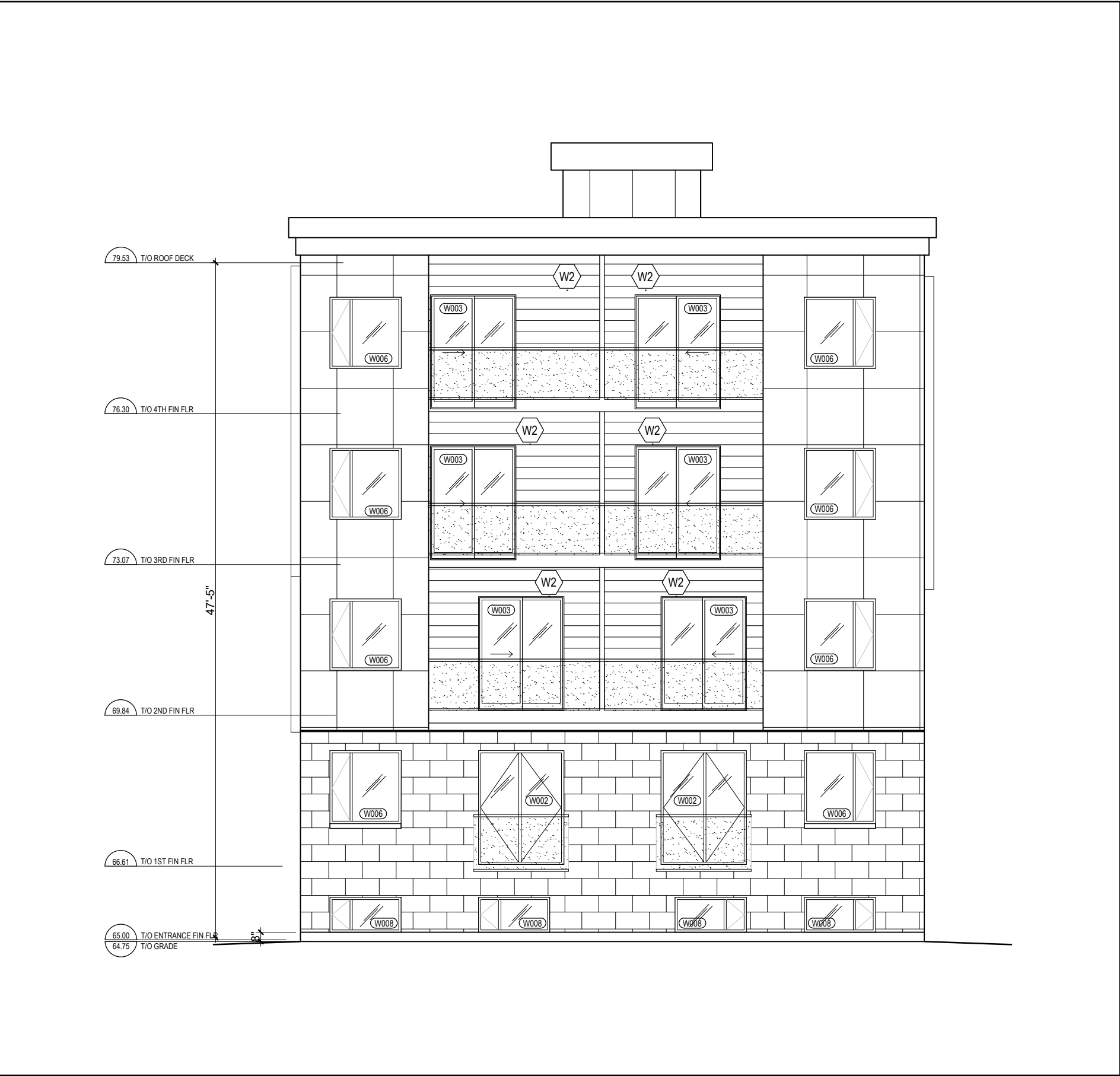
2 EAST FACADE
A-400 SCALE = 1/8" = 1'-0"



1 NORTH FACADE
A-400 SCALE = 1/8" = 1'-0"



3 WEST FACADE
A-400 SCALE = 1/8" = 1'-0"



3 SOUTH FACADE
A-400 SCALE = 1/8" = 1'-0"

LEGEND:

BRICK

PREFINISHED ALUMINUM CLADDING

PREFINISHED CEMENT CLADDING

JOHN SEVIGNY C.E.T.
MANAGER (A), DEVELOPMENT REVIEW EAST
PLANNING, DEVELOPMENT & BUILDING SERVICES
DEPARTMENT, CITY OF OTTAWA

APPROVED
By sevignyjo at 2:52 pm, Aug 22, 2025

CLIENT

PROJECT NORTH SEAL

TRUE NORTH

ARCHITECTURAL

(L+D) LALANDE + DOYLE ARCHITECTS INC.
www.lplusd.com Tel: 613.233.2900
159 Neiland Ave. Fax: 613.233.1008
Ottawa, Ontario K1Y 0Y2

MECHANICAL + ELECTRICAL

STRUCTURAL

CIVIL

DATE	DESCRIPTION	ISSUE REV.
2025/07/17	REISSUED FOR PERMIT	4
2025/07/09	ISSUED FOR CONSTRUCTION	3
2025/05/29	REISSUED FOR PERMIT	3
2025/03/11	ISSUED FOR PERMIT	2
2025/02/20	ISSUED FOR REVIEW AND COORDINATION	1

PROJECT NAME

PULSE SOCIETIES LTD.
ORLEANS DEVELOPMENT - GBR

1136 Gabriel Street, Orleans (Ottawa), ON

DRAWING TITLE

ELEVATIONS

DATE 10/07/2024 PROJECT NO. 24-002B

SCALE AS NOTED

DRAWN BY BR DRAWING NO. A-400

REVIEWED BY LCL