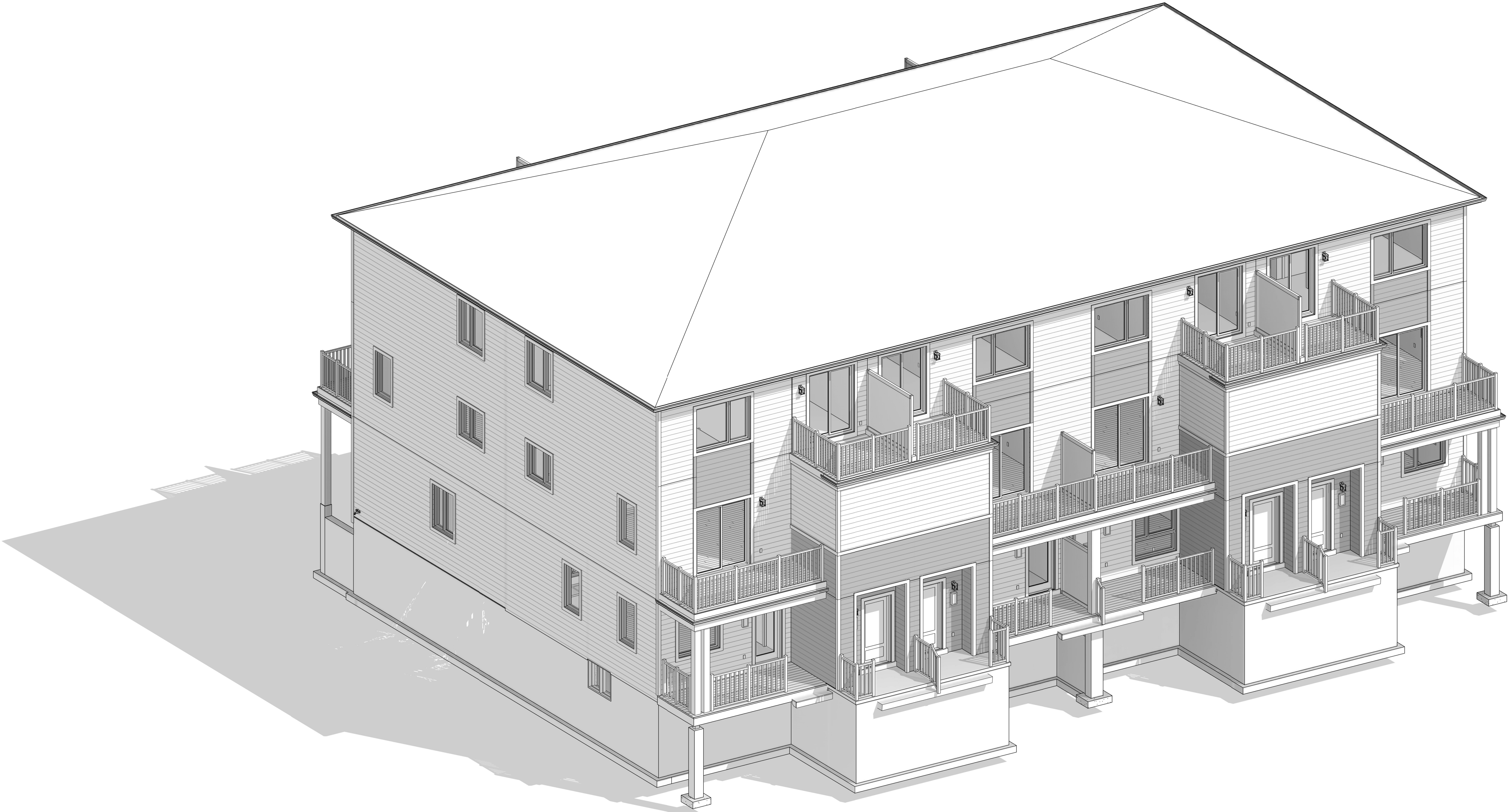


ALLISON HAMLIN
MANAGER, DEVELOPMENT REVIEW ALL WARDS
PLANNING, DEVELOPMENT & BUILDING SERVICES
DEPARTMENT, CITY OF OTTAWA

APPROVED
By Allison Hamlin at 10:58 am, Aug 21, 2025

STITTSTVILLE MAIN STREET - TRADITIONS II
TRANSITIONAL (TN)
The Boxwood End, The Willow,
The Indigo, The Aster,
2024



bim
STUDIO
636 KING ST W,
3RD FLOOR, TORONTO, ON,
M5V 1M7,
bim@bimstudio.ca

organica
studio + inc.
architecture | interiors | design | research
7-145 BIRMINGHAM STREET,
ETOBICOKE, ON,
M8V3Z8
info@organicastudio.ca
T: 905 832 5758

ARCHITECT DISCLAIMER
COPYRIGHT OF THIS DRAWING AND DESIGN IS RESERVED BY THE DESIGNER. THE DRAWING AND ALL ASSOCIATED DOCUMENTS ARE AN INSTRUMENT OF SERVICE BY THE DESIGNER. THE DRAWING AND THE INFORMATION CONTAINED THEREIN MAY NOT BE REPRODUCED IN WHOLE OR IN PART WITHOUT PRIOR WRITTEN PERMISSION OF THE DESIGNER. THESE CONTRACT DOCUMENTS ARE THE PROPERTY OF THE ARCHITECT. THE ARCHITECT BEARS NO RESPONSIBILITY FOR THE INTERPRETATION OF THESE DOCUMENTS BY THE CONTRACTOR UPON WRITTEN APPLICATION THE ARCHITECT WILL PROVIDE WRITTEN/GRAPHIC CLARIFICATION OR SUPPLEMENTARY INFORMATION REGARDING THE INTENT OF THE CONTRACT DOCUMENTS. THE ARCHITECT WILL REVIEW SHOP DRAWINGS SUBMITTED BY THE CONTRACTOR FOR DESIGN CONFORMANCE ONLY. DRAWINGS ARE NOT TO BE SCALED FOR CONSTRUCTION. CONTRACTOR TO VERIFY ALL EXISTING CONDITIONS AND DIMENSIONS REQUIRED TO PERFORM THE WORK AND REPORT ANY DISCREPANCIES WITH THE CONTRACT DOCUMENTS TO THE ARCHITECT BEFORE COMMENCING WORK. POSITIONS OF EXPOSED OR FINISHED MECHANICAL OR ELECTRICAL DEVICES, FITTINGS, AND FIXTURES ARE INDICATED ON ARCHITECTURAL DRAWINGS. THE LOCATIONS SHOWN ON THE ARCHITECTURAL DRAWINGS GOVERN OVER THE MECHANICAL AND ELECTRICAL DRAWINGS. THOSE ITEMS NOT CLEARLY LOCATED WILL BE LOCATED AS DIRECTED BY THE ARCHITECT. THESE DRAWINGS ARE NOT TO BE USED FOR CONSTRUCTION UNLESS NOTED BELOW AS "ISSUED FOR CONSTRUCTION" ALL WORK TO BE CARRIED OUT IN CONFORMANCE WITH THE CODE AND BYLAWS OF THE AUTHORITIES HAVING JURISDICTION. THE DESIGNER OF THESE PLANS AND SPECIFICATIONS GIVES NO WARRANTY OR REPRESENTATION TO ANY PARTY ABOUT THE CONSTRUCTABILITY OF THE REPRESENTED BY THEM. ALL CONTRACTORS OR SUBCONTRACTORS MUST SATISFY THEMSELVES WHEN BIDDING AND AT ALL TIMES THAT THEY CAN PROPERLY CONSTRUCT THE WORK REPRESENTED BY THESE PLANS.

ARCHITECT STAMP



ISSUED / REVISION CHART		
01	ISSUED FOR SPA	2025-01-20

COVER SHEET

STITTSTVILLE MAIN STREET
TRANSITIONAL (TN)

TRADITIONS II

CITY OF OTTAWA

CITY PLAN NO.	CITY FILE NO.
SHEET SIZE 24"x36"	PAGE A0.00
SCALE	
ISSUE DATE 2025-01-20	

ALLISON HAMLIN
MANAGER , DEVELOPMENT REVIEW ALL WARDS
PLANNING, DEVELOPMENT & BUILDING SERVICES
DEPARTMENT, CITY OF OTTAWA

APPROVED
By Allison Hamlin at 10:58 am, Aug 21, 2025

FOR APPLICATION AND CONSTRUCTION INSTALLATION
ON THE ABOVE MATERIALS SEE:
WINDOW TRIM DETAIL, FREEZE BOARD DETAILS AND OTHER
TRIM DETAILS SHOWN ON FRONT ELEVATION SHEETS OR IN EXTERNAL
CONSTRUCTION DETAILS SHEETS.

STUDIO

636 KING ST W,
3RD FLOOR, TORONTO, ON,
M5V 1M7,
bim@bimstudio.ca

organica

studio + inc.

architecture | interiors | design | research

7-145 BIRMINGHAM STREET,
ETOBICOKE, ON,
M8V3Z8
info@organicastudio.ca
T: 905 832 5758

ARCHITECT DISCLAIMER
COPYRIGHT OF THIS DRAWING AND DESIGN IS RESERVED BY THE DESIGNER. THE DRAWING AND ALL ASSOCIATED DOCUMENTS ARE AN INSTRUMENT OF SERVICE BY THE DESIGNER. THE DRAWING AND THE INFORMATION CONTAINED THEREIN MAY NOT BE REPRODUCED IN WHOLE OR IN PART WITHOUT PRIOR WRITTEN PERMISSION OF THE DESIGNER. THESE CONTRACT DOCUMENTS ARE THE PROPERTY OF THE ARCHITECT. THE ARCHITECT BEARS NO RESPONSIBILITY FOR THE INTERPRETATION OF THESE DOCUMENTS BY THE CONTRACTOR UPON WRITTEN APPLICATION THE ARCHITECT WILL PROVIDE WRITTEN/GRAPHIC CLARIFICATION OR SUPPLEMENTARY INFORMATION REGARDING THE INTENT OF THE CONTRACT DOCUMENTS. THE ARCHITECT WILL REVIEW SHOP DRAWINGS SUBMITTED BY THE CONTRACTOR FOR DESIGN CONFORMANCE ONLY. DRAWINGS ARE NOT TO BE SCALED FOR CONSTRUCTION. CONTRACTOR TO VERIFY ALL EXISTING CONDITIONS AND DIMENSIONS REQUIRED TO PERFORM THE WORK AND REPORT ANY DISCREPANCIES WITH THE CONTRACT DOCUMENTS TO THE ARCHITECT BEFORE COMMENCING WORK. POSITIONS OF EXPOSED OR FINISHED MECHANICAL OR ELECTRICAL DEVICES, FITTINGS, AND FIXTURES ARE INDICATED ON ARCHITECTURAL DRAWINGS. THE LOCATIONS SHOWN ON THE ARCHITECTURAL DRAWINGS GOVERN OVER THE MECHANICAL AND ELECTRICAL DRAWINGS. THOSE ITEMS NOT CLEARLY LOCATED WILL BE LOCATED AS DIRECTED BY THE ARCHITECT. THESE DRAWINGS ARE NOT TO BE USED FOR CONSTRUCTION UNLESS NOTED BELOW AS "ISSUED FOR CONSTRUCTION" ALL WORK TO BE CARRIED OUT IN CONFORMANCE WITH THE CODE AND BYLAWS OF THE AUTHORITIES HAVING JURISDICTION. THE DESIGNER OF THESE PLANS AND SPECIFICATIONS GIVES NO WARRANTY OR REPRESENTATION TO ANY PARTY ABOUT THE CONSTRUCTABILITY OF THE REPRESENTED BY THEM. ALL CONTRACTORS OR SUBCONTRACTORS MUST SATISFY THEMSELVES WHEN BIDDING AND AT ALL TIMES THAT THEY CAN PROPERLY CONSTRUCT THE WORK REPRESENTED BY THESE PLANS.

ARCHITECT STAMP



ISSUED / REVISION CHART

REV	DESCRIPTION	DATE
01	ISSUED FOR SPA	2025-01-20

FRONT
ELEVATION

STITTVILLE MAIN STREET
TRANSITIONAL (TN)

TRADITIONS II

CITY OF OTTAWA

CITY PLAN NO. CITY FILE NO.

SHEET SIZE 24"x36"
SCALE As Indicated
ISSUE DATE 2025-01-20



FRONT ELEVATION
1:50

APPROVED
By Allison Hamlin at 10:58 am, Aug 21, 2025

FOR APPLICATION AND CONSTRUCTION INSTALLATION
ON THE ABOVE MATERIALS SEE:
WINDOW TYP DETAIL, FENCE BOARD DETAILS AND OTHER
TYP DETAILS SHOWN ON FRONT ELEVATION SHEETS OR IN EXTERNAL
CONSTRUCTION DETAILS SHEETS.

ARCHITECT DISCLAIMER
COPYRIGHT OF THIS DRAWING AND DESIGN IS
RESERVED BY THE DESIGNER. THE DRAWING AND
ALL ASSOCIATED DOCUMENTS ARE AN INSTRUMENT
OF SERVICE BY THE DESIGNER. THE DRAWING AND
THE INFORMATION CONTAINED THEREIN MAY NOT BE
REPRODUCED IN WHOLE OR IN PART WITHOUT
PRIOR WRITTEN PERMISSION OF THE DESIGNER.
THESE CONTRACT DOCUMENTS ARE THE PROPERTY
OF THE ARCHITECT. THE ARCHITECT BEARS NO
RESPONSIBILITY FOR THE INTERPRETATION OF
THESE DOCUMENTS BY THE CONTRACTOR UPON
WRITTEN APPLICATION THE ARCHITECT WILL
PROVIDE WRITTEN/GRAPHIC CLARIFICATION OR
SUPPLEMENTARY INFORMATION REGARDING THE
INTENT OF THE CONTRACT DOCUMENTS. THE
ARCHITECT WILL REVIEW SHOP DRAWINGS
SUBMITTED BY THE CONTRACTOR FOR DESIGN
CONFORMANCE ONLY. DRAWINGS ARE NOT TO BE
SCALED FOR CONSTRUCTION. CONTRACTOR TO
VERIFY ALL EXISTING CONDITIONS AND DIMENSIONS
REQUIRED TO PERFORM THE WORK AND REPORT
ANY DISCREPANCIES WITH THE CONTRACT
DOCUMENTS TO THE ARCHITECT BEFORE
COMMENCING WORK. POSITIONS OF EXPOSED OR
FINISHED MECHANICAL OR ELECTRICAL DEVICES,
FITTINGS, AND FIXTURES ARE INDICATED ON
ARCHITECTURAL DRAWINGS. THE LOCATIONS
SHOWN ON THE ARCHITECTURAL DRAWINGS
GOVERN OVER THE MECHANICAL AND ELECTRICAL
DRAWINGS. THOSE ITEMS NOT CLEARLY LOCATED
WILL BE LOCATED AS DIRECTED BY THE ARCHITECT.
THESE DRAWINGS ARE NOT TO BE USED FOR
CONSTRUCTION UNLESS NOTED BELOW AS "ISSUED
FOR CONSTRUCTION" ALL WORK TO BE CARRIED
OUT IN CONFORMANCE WITH THE CODE AND
BYLAWS OF THE AUTHORITIES HAVING
JURISDICTION. THE DESIGNER OF THESE PLANS AND
SPECIFICATIONS GIVES NO WARRANTY OR
REPRESENTATION TO ANY PARTY ABOUT THE
CONSTRUCTABILITY OF THE REPRESENTED BY
THEM. ALL CONTRACTORS OR SUBCONTRACTORS
MUST SATISFY THEMSELVES WHEN BIDDING AND AT
ALL TIMES THAT THEY CAN PROPERLY CONSTRUCT
THE WORK REPRESENTED BY THESE PLANS.

ARCHITECT STAMP



ISSUED / REVISION CHART

01	ISSUED FOR SPA	2025-01-20

LEFT ELEVATION

STITTVILLE MAIN STREET
TRANSITIONAL (TN)

TRADITIONS II

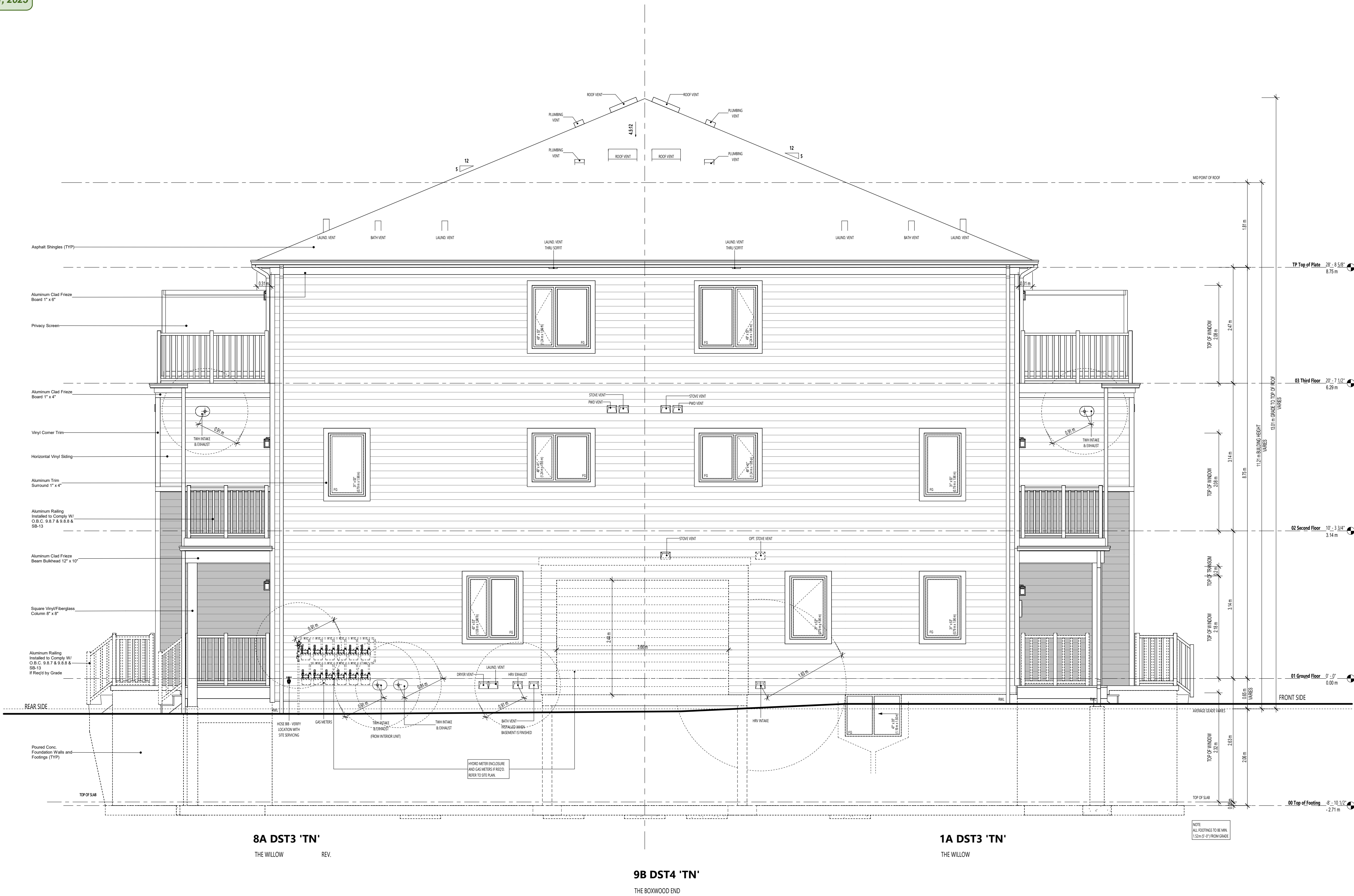
CITY OF OTTAWA

CITY PLAN NO.

CITY FILE NO.

SHEET SIZE 24"x36"
SCALE As Indicated
ISSUE DATE 2025-01-20

PAGE A2.10



LEFT ELEVATION
1:50

Hamlin

ALLISON HAMLIN
MANAGER , DEVELOPMENT REVIEW ALL WARDS
PLANNING, DEVELOPMENT & BUILDING SERVICES
DEPARTMENT, CITY OF OTTAWA

APPROVED

By Allison Hamlin at 10:58 am, Aug 21, 2025

FOR APPLICATION AND CONSTRUCTION INSTALLATION
ON THE ABOVE MATERIALS SEE:
WINDOW TRIM DETAIL, FENCE BOARD DETAILS AND OTHER
TRIM DETAILS SHOWN ON FRONT ELEVATION SHEETS OR IN EXTERNAL
CONSTRUCTION DETAILS SHEETS.



STUDIO

636 KING ST W,
3RD FLOOR, TORONTO, ON,
M5V 1M7,
bim@bimstudio.ca

organica
studio + inc.

architecture | interiors | design | research

7-145 BIRMINGHAM STREET,
ETOBICOKE, ON,
M8V3Z8
info@organicastudio.ca
T: 905 832 5758

ARCHITECT DISCLAIMER

COPYRIGHT OF THIS DRAWING AND DESIGN IS
RESERVED BY THE DESIGNER. THE DRAWING AND
ALL ASSOCIATED DOCUMENTS ARE AN INSTRUMENT
OF SERVICE BY THE DESIGNER. THE DRAWING AND
THE INFORMATION CONTAINED THEREIN MAY NOT BE
REPRODUCED IN WHOLE OR IN PART WITHOUT
PRIOR WRITTEN PERMISSION OF THE DESIGNER.
THESE CONTRACT DOCUMENTS ARE THE PROPERTY
OF THE ARCHITECT. THE ARCHITECT BEARS NO
RESPONSIBILITY FOR THE INTERPRETATION OF
THESE DOCUMENTS BY THE CONTRACTOR UPON
WRITTEN APPLICATION THE ARCHITECT WILL
PROVIDE WRITTEN/GRAPHIC CLARIFICATION OR
SUPPLEMENTARY INFORMATION REGARDING THE
INTENT OF THE CONTRACT DOCUMENTS. THE
ARCHITECT WILL REVIEW SHOP DRAWINGS
SUBMITTED BY THE CONTRACTOR FOR DESIGN
CONFORMANCE ONLY. DRAWINGS ARE NOT TO BE
SCALED FOR CONSTRUCTION. CONTRACTOR TO
VERIFY ALL EXISTING CONDITIONS AND DIMENSIONS
REQUIRED TO PERFORM THE WORK AND REPORT
ANY DISCREPANCIES WITH THE CONTRACT
DOCUMENTS TO THE ARCHITECT BEFORE
COMMENCING WORK. POSITIONS OF EXPOSED OR
FINISHED MECHANICAL OR ELECTRICAL DEVICES,
FITTINGS, AND FIXTURES ARE INDICATED ON
ARCHITECTURAL DRAWINGS. THE LOCATIONS
SHOWN ON THE ARCHITECTURAL DRAWINGS
GOVERN OVER THE MECHANICAL AND ELECTRICAL
DRAWINGS. THOSE ITEMS NOT CLEARLY LOCATED
WILL BE LOCATED AS DIRECTED BY THE ARCHITECT.
THESE DRAWINGS ARE NOT TO BE USED FOR
CONSTRUCTION UNLESS NOTED BELOW AS "ISSUED
FOR CONSTRUCTION" ALL WORK TO BE CARRIED
OUT IN CONFORMANCE WITH THE CODE AND
BYLAWS OF THE AUTHORITIES HAVING
JURISDICTION. THE DESIGNER OF THESE PLANS
AND SPECIFICATIONS GIVES NO WARRANTY OR
REPRESENTATION TO ANY PARTY ABOUT THE
CONSTRUCTABILITY OF THE REPRESENTED BY
THEM. ALL CONTRACTORS OR SUBCONTRACTORS
MUST SATISFY THEMSELVES WHEN BIDDING AND AT
ALL TIMES THAT THEY CAN PROPERLY CONSTRUCT
THE WORK REPRESENTED BY THESE PLANS.

ARCHITECT STAMP



ISSUED / REVISION CHART

01	ISSUED FOR SPA	2025-01-20

LEFT ELEVATION - UPG

STITTSVILLE MAIN STREET
TRANSITIONAL (TN)

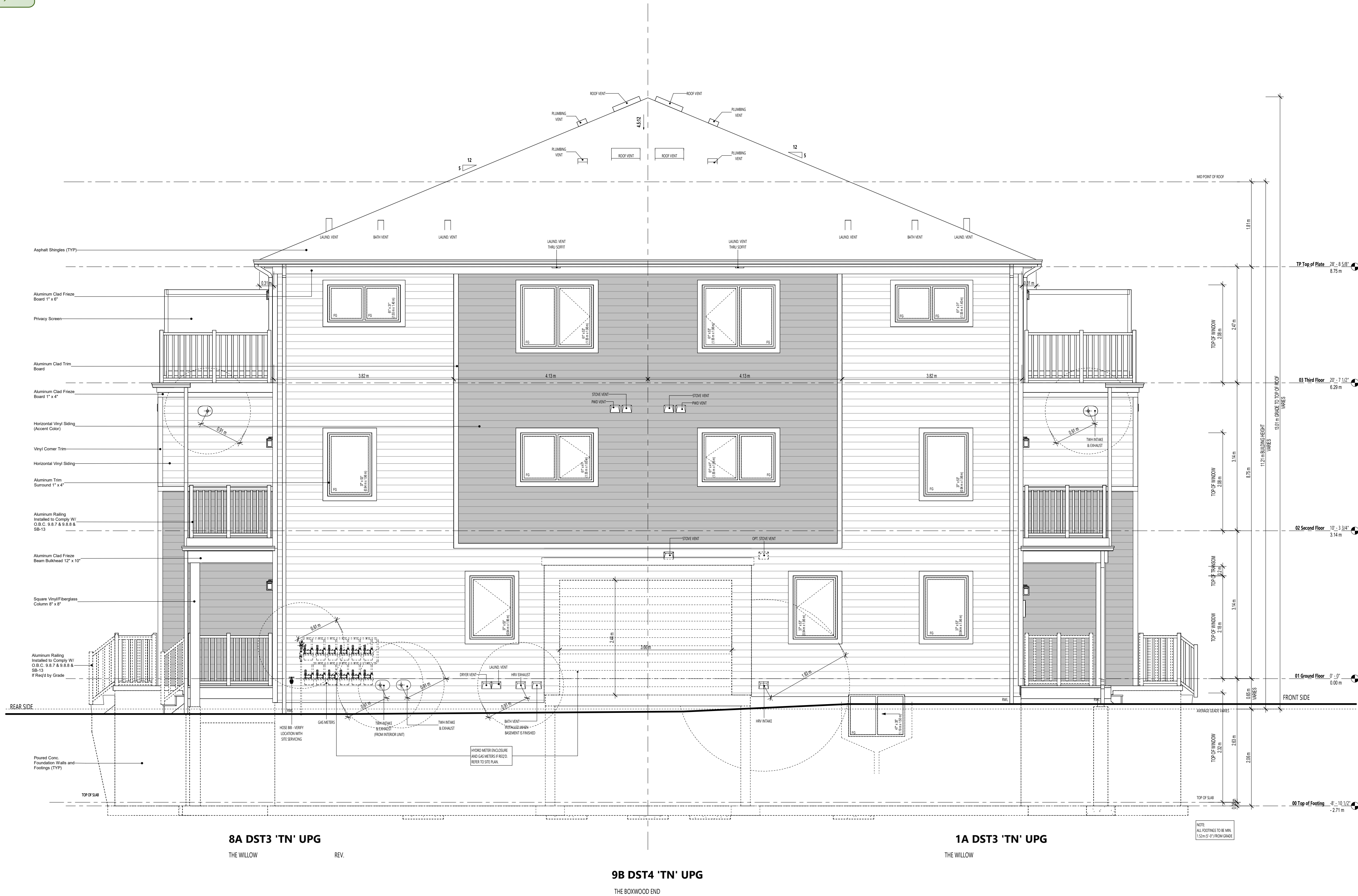
TRADITIONS II

CITY OF OTTAWA

CITY PLAN NO. CITY FILE NO.

SHEET SIZE 24"x36"
SCALE As Indicated
ISSUE DATE 2025-01-20

PAGE A2.11



8A DST3 'TN' UPG

THE WILLOW

REV.

9B DST4 'TN' UPG

THE BOXWOOD END

1A DST3 'TN' UPG

THE WILLOW

LEFT ELEVATION - UPG

1:50

Hamlin

ALLISON HAMLIN
MANAGER, DEVELOPMENT REVIEW ALL WARDS
PLANNING, DEVELOPMENT & BUILDING SERVICES
DEPARTMENT, CITY OF OTTAWA

APPROVED

By Allison Hamlin at 10:58 am, Aug 21, 2025

FOR APPLICATION AND CONSTRUCTION INSTALLATION
ON THE ABOVE MATERIALS SEE:
WINDOW TRIM DETAIL, FRIeze BOARD DETAILS AND OTHER
TRIM DETAILS SHOWN ON FRONT ELEVATION SHEETS OR IN EXTERNAL
CONSTRUCTION DETAILS SHEETS.



STUDIO

636 KING ST W,
3RD FLOOR, TORONTO, ON,
M5V 1M7,
bim@bimstudio.ca

organica
studio + inc.

architecture | interiors | design | research

7-145 BIRMINGHAM STREET,
ETOBICOKE, ON,
M8V3Z8
info@organicastudio.ca
T: 905 832 5758

ARCHITECT DISCLAIMER

COPYRIGHT OF THIS DRAWING AND DESIGN IS RESERVED BY THE DESIGNER. THE DRAWING AND ALL ASSOCIATED DOCUMENTS ARE AN INSTRUMENT OF SERVICE BY THE DESIGNER. THE DRAWING AND THE INFORMATION CONTAINED THEREIN MAY NOT BE REPRODUCED IN WHOLE OR IN PART WITHOUT PRIOR WRITTEN PERMISSION OF THE DESIGNER. THESE CONTRACT DOCUMENTS ARE THE PROPERTY OF THE ARCHITECT. THE ARCHITECT BEARS NO RESPONSIBILITY FOR THE INTERPRETATION OF THESE DOCUMENTS BY THE CONTRACTOR UPON WRITTEN APPLICATION THE ARCHITECT WILL PROVIDE WRITTEN/GRAPHIC CLARIFICATION OR SUPPLEMENTARY INFORMATION REGARDING THE INTENT OF THE CONTRACT DOCUMENTS. THE ARCHITECT WILL REVIEW SHOP DRAWINGS SUBMITTED BY THE CONTRACTOR FOR DESIGN CONFORMANCE ONLY. DRAWINGS ARE NOT TO BE SCALED FOR CONSTRUCTION. CONTRACTOR TO VERIFY ALL EXISTING CONDITIONS AND DIMENSIONS REQUIRED TO PERFORM THE WORK AND REPORT ANY DISCREPANCIES WITH THE CONTRACT DOCUMENTS TO THE ARCHITECT BEFORE COMMENCING WORK. POSITIONS OF EXPOSED OR FINISHED MECHANICAL OR ELECTRICAL DEVICES, FITTINGS, AND FIXTURES ARE INDICATED ON ARCHITECTURAL DRAWINGS. THE LOCATIONS SHOWN ON THE ARCHITECTURAL DRAWINGS GOVERN OVER THE MECHANICAL AND ELECTRICAL DRAWINGS. THOSE ITEMS NOT CLEARLY LOCATED WILL BE LOCATED AS DIRECTED BY THE ARCHITECT. THESE DRAWINGS ARE NOT TO BE USED FOR CONSTRUCTION UNLESS NOTED BELOW AS "ISSUED FOR CONSTRUCTION" ALL WORK TO BE CARRIED OUT IN CONFORMANCE WITH THE CODE AND BYLAWS OF THE AUTHORITIES HAVING JURISDICTION. THE DESIGNER OF THESE PLANS AND SPECIFICATIONS GIVES NO WARRANTY OR REPRESENTATION TO ANY PARTY ABOUT THE CONSTRUCTABILITY OF THE REPRESENTED BY THEM. ALL CONTRACTORS OR SUBCONTRACTORS MUST SATISFY THEMSELVES WHEN BIDDING AND AT ALL TIMES THAT THEY CAN PROPERLY CONSTRUCT THE WORK REPRESENTED BY THESE PLANS.

ARCHITECT STAMP



ISSUED / REVISION CHART

01	ISSUED FOR SPA	2025-01-20

REAR ELEVATION

STITTVILLE MAIN STREET
TRANSITIONAL (TN)

TRADITIONS II

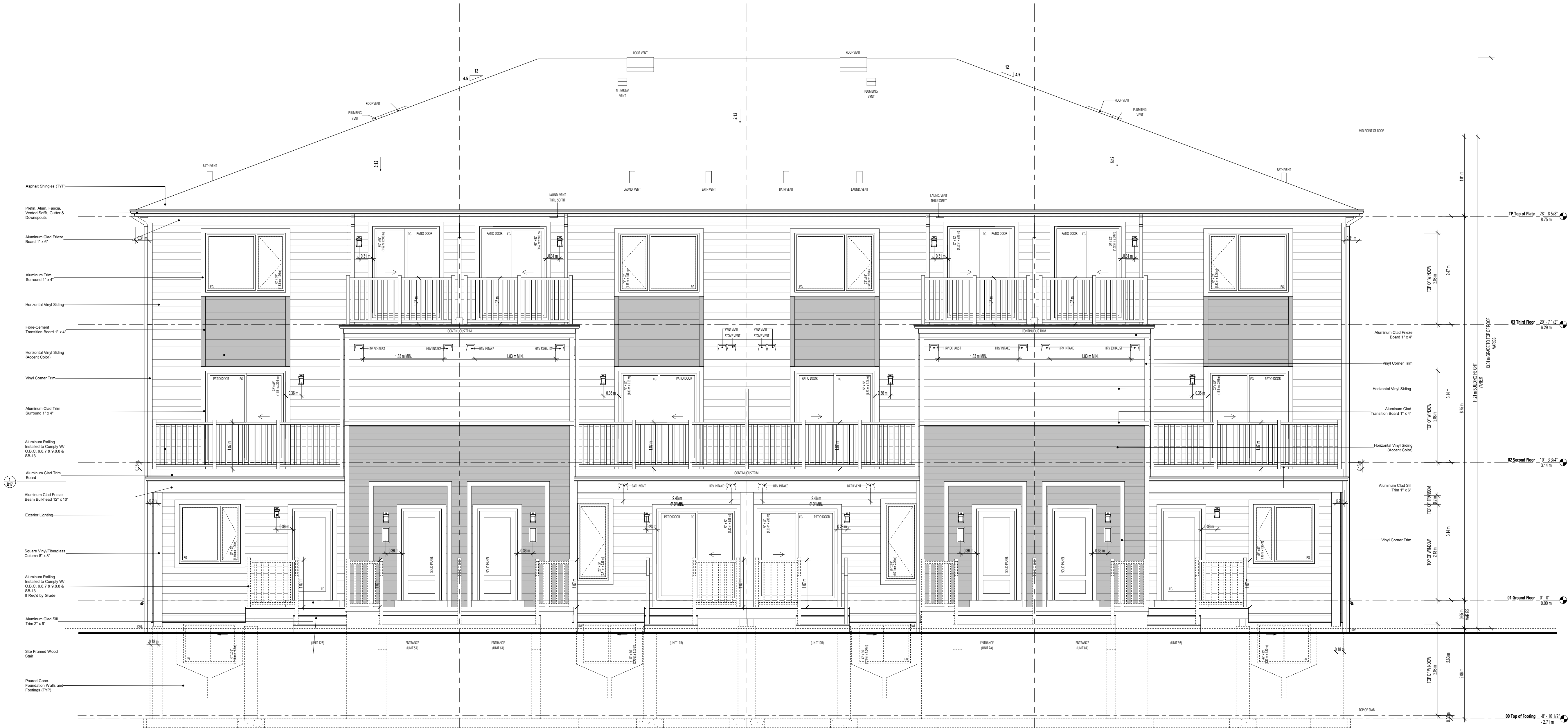
CITY OF OTTAWA

CITY PLAN NO.

CITY FILE NO.

SHEET SIZE 24"x36"
SCALE As Indicated
ISSUE DATE 2025-01-20

PAGE A2.20



5A DST3 'TN'

THE WILLOW

6A DST1 'TN'

THE ASTER REV.

7A DST1 'TN'

THE ASTER

8A DST3 'TN'

THE WILLOW REV.

12B DST4 'TN'

THE BOXWOOD END REV.

11B DST2 'TN'

THE INDIGO

10B DST2 'TN'

THE INDIGO REV.

9B DST4 'TN'

THE BOXWOOD END

REAR ELEVATION

1:50

**ALLISON HAMLIN
MANAGER , DEVELOPMENT REVIEW ALL WARDS
PLANNING, DEVELOPMENT & BUILDING SERVICES
DEPARTMENT, CITY OF OTTAWA**

By Allison Hamlin at 10:58 am, Aug 21, 2025



STUDIO

636 KING ST W,
3RD FLOOR, TORONTO, ON
M5V 1M7,
bim@bimstudio.ca

organica
studio + inc.

architecture | interiors | design | research

7-145 BIRMINGHAM STREET,
ETOBICOKE, ON,
M8V3Z8
info@organicastudio.ca
T: 905 832 5758

ARCHITECT DISCLAIMER

COPYRIGHT OF THIS DRAWING AND DESIGN IS
 RESERVED BY THE DESIGNER. THE DRAWING AND
 ALL ASSOCIATED DOCUMENTS ARE AN INSTRUMENT
 OF SERVICE BY THE DESIGNER. THE DRAWING AND
 ALL ASSOCIATED DOCUMENTS ARE NOT TO BE
 REPRODUCED IN WHOLE OR IN PART WITHOUT
 PRIOR WRITTEN PERMISSION OF THE DESIGNER.
 THESE CONTRACT DOCUMENTS ARE THE PROPERTY
 OF THE ARCHITECT. THE ARCHITECT BEARS NO
 RESPONSIBILITY FOR THE LOSS OR DESTRUCTION OF
 THESE DOCUMENTS BY THE CONTRACTOR UPON
 WRITTEN APPLICATION BY THE CONTRACTOR UPON
 PROVIDE WRITTEN GRAPHIC CLARIFICATION OR
 SUPPLEMENTARY INFORMATION REGARDING THE
 INTENT OF THE CONTRACT DOCUMENTS. THE
 ARCHITECT'S OFFICE SHALL NOT BE RESPONSIBLE
 SUBMITTED BY THE CONTRACTOR FOR DESIGN
 CONFORMANCE ONLY. DRAWINGS ARE NOT TO BE
 SCALED FOR CONSTRUCTION. CONTRACTOR TO
 VERIFY ALL EXISTING CONDITIONS AND DIMENSIONS
 BEFORE CONSTRUCTION. CONTRACTOR TO REPORT
 ANY DISCREPANCIES WITH THE CONTRACT
 DOCUMENTS TO THE ARCHITECT BEFORE
 COMMENCING WORK. POSITIONS OF EXPOSED OR
 FINISHED MECHANICAL OR ELECTRICAL DEVICES,
 FIXTURES, AND EQUIPMENT SHALL BE SHOWN ON
 ARCHITECTURAL DRAWINGS. THE LOCATIONS
 SHOWN ON THE ARCHITECTURAL DRAWINGS
 GOVERN OVER THE MECHANICAL AND ELECTRICAL
 DRAWINGS. THOSE ITEMS NOT CLEARLY LOCATED
 WILL BE LOCATED AND CONNECTED BY THE ARCHITECT.
 CONTRACTOR TO VERIFY ALL DIMENSIONS AND
 CONSTRUCTION UNLESS NOTED BELOW AS "ISSUED
 FOR CONSTRUCTION" ALL WORK TO BE CARRIED
 OUT IN CONFORMANCE WITH THE CODE AND
 BYLAWS OF THE AUTHORITIES HAVING
 JURISDICTION. THE REVIEW OF THE PLANS AND
 SPECIFICATIONS GIVES NO WARRANTY OR
 REPRESENTATION TO ANY PARTY ABOUT THE
 CONSTRUCTIBILITY OF THE REPRESENTED BY
 THEM. ALL CONTRACTORS OR SUBCONTRACTORS
 MUST SATISFY THE REQUIREMENTS OF THE CODES AND AT
 ALL TIMES THAT THEY CAN PROPERLY CONSTRUCT
 THE WORK REPRESENTED BY THESE PLANS.

ARCHITECT STAMP



ISSUED / REVISION CHART

[illegible]

RIGHT ELEVATION

STITTSVILLE MAIN STREET TRANSITIONAL (TN)

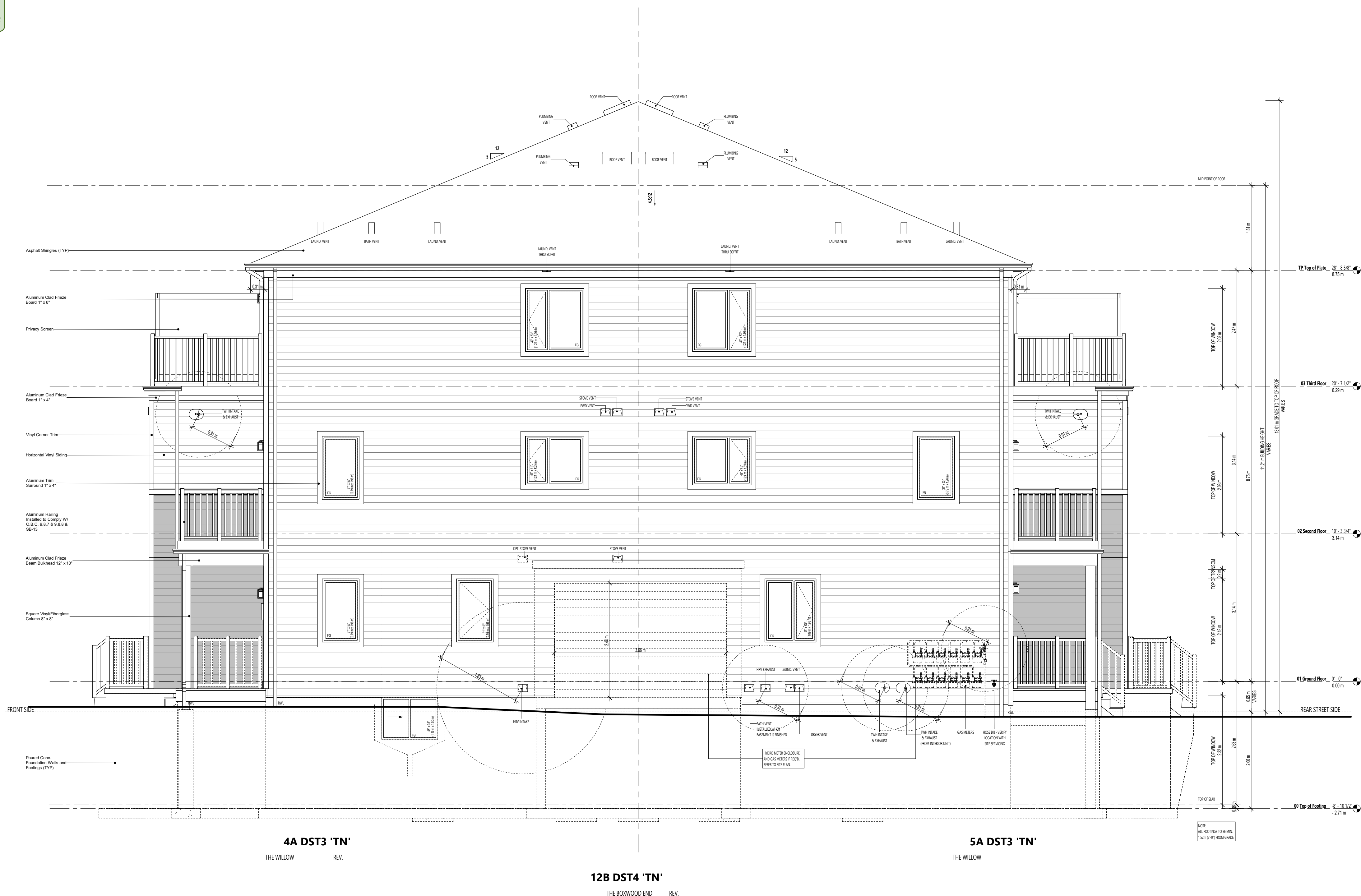
TRADITIONS II

CITY OF OTTAWA

CITY PLAN NO.	CITY FILE NO.
---------------	---------------

SHEET SIZE 24"x36"
SCALE As indicated
ISSUE DATE 2025-01-24

PAGE A2.30



RIGHT ELEVATION

1:50

AtHamlin

ALLISON HAMLIN
MANAGER, DEVELOPMENT REVIEW ALL WARDS
PLANNING, DEVELOPMENT & BUILDING SERVICES
DEPARTMENT, CITY OF OTTAWA

APPROVED

By Allison Hamlin at 10:58 am, Aug 21, 2025

FOR APPLICATION AND CONSTRUCTION INSTALLATION
ON THE ABOVE MATERIALS SEE:
WINDOW TYP DETAIL, FENCE BOARD DETAILS AND OTHER
TYPICAL DETAILS SHOWN ON FRONT ELEVATION SHEETS OR IN EXTERNAL
CONSTRUCTION DETAILS SHEETS.



636 KING ST W,
3RD FLOOR, TORONTO, ON,
M5V 1M7,
bim@bimstudio.ca

organica
studio + inc.

architecture | interiors | design | research

7-145 BIRMINGHAM STREET,
ETOBICOKE, ON,
M8V3Z8
info@organicastudio.ca
T: 905 832 5758

ARCHITECT DISCLAIMER

COPYRIGHT OF THIS DRAWING AND DESIGN IS RESERVED BY THE DESIGNER. THE DRAWING AND ALL ASSOCIATED DOCUMENTS ARE AN INSTRUMENT OF SERVICE BY THE DESIGNER. THE DRAWING AND THE INFORMATION CONTAINED THEREIN MAY NOT BE REPRODUCED IN WHOLE OR IN PART WITHOUT PRIOR WRITTEN PERMISSION OF THE DESIGNER. THESE CONTRACT DOCUMENTS ARE THE PROPERTY OF THE ARCHITECT. THE ARCHITECT BEARS NO RESPONSIBILITY FOR THE INTERPRETATION OF THESE DOCUMENTS BY THE CONTRACTOR UPON WRITTEN APPLICATION THE ARCHITECT WILL PROVIDE WRITTEN/GRAPHIC CLARIFICATION OR SUPPLEMENTARY INFORMATION REGARDING THE INTENT OF THE CONTRACT DOCUMENTS. THE ARCHITECT WILL REVIEW SHOP DRAWINGS SUBMITTED BY THE CONTRACTOR FOR DESIGN CONFORMANCE ONLY. DRAWINGS ARE NOT TO BE SCALED FOR CONSTRUCTION. CONTRACTOR TO VERIFY ALL EXISTING CONDITIONS AND DIMENSIONS REQUIRED TO PERFORM THE WORK AND REPORT ANY DISCREPANCIES WITH THE CONTRACT DOCUMENTS TO THE ARCHITECT BEFORE COMMENCING WORK. POSITIONS OF EXPOSED OR FINISHED MECHANICAL OR ELECTRICAL DEVICES, FITTINGS, AND FIXTURES ARE INDICATED ON ARCHITECTURAL DRAWINGS. THE LOCATIONS SHOWN ON THE ARCHITECTURAL DRAWINGS GOVERN OVER THE MECHANICAL AND ELECTRICAL DRAWINGS. THOSE ITEMS NOT CLEARLY LOCATED WILL BE LOCATED AS DIRECTED BY THE ARCHITECT. THESE DRAWINGS ARE NOT TO BE USED FOR CONSTRUCTION UNLESS NOTED BELOW AS "ISSUED FOR CONSTRUCTION" ALL WORK TO BE CARRIED OUT IN CONFORMANCE WITH THE CODE AND BYLAWS OF THE AUTHORITIES HAVING JURISDICTION. THE DESIGNER OF THESE PLANS AND SPECIFICATIONS GIVES NO WARRANTY OR REPRESENTATION TO ANY PARTY ABOUT THE CONSTRUCTABILITY OF THE REPRESENTED BY THEM. ALL CONTRACTORS OR SUBCONTRACTORS MUST SATISFY THEMSELVES WHEN BIDDING AND AT ALL TIMES THAT THEY CAN PROPERLY CONSTRUCT THE WORK REPRESENTED BY THESE PLANS.

ARCHITECT STAMP



ISSUED / REVISION CHART

01	ISSUED FOR SPA	2025-01-20

RIGHT ELEVATION - UPG

STITTSTVILLE MAIN STREET
TRANSITIONAL (TN)

TRADITIONS II

CITY OF OTTAWA

CITY PLAN NO. CITY FILE NO.

SHEET SIZE 24"x36"
SCALE As Indicated
ISSUE DATE 2025-01-20

PAGE A2.31



RIGHT ELEVATION - UPG

1:50