



The Contractor shall verify and be responsible for all dimensions. DO NOT scale the drawing - any errors or omissions shall be reported to Stantec without delay.

The Copyrights to all designs and drawings are the property of Stantec. Reproduction or use for any purpose other than that authorized by Stantec is forbidden.

	ORIGINAL GROUND ELEVATION
	PROPOSED ELEVATION
	PROPOSED ELEVATION
	EXISTING ELEVATION
	FLOW DIRECTION AND GRADE
	FINISHED FIRST FLOOR ELEVATION
	ELEVATION OF FOOTING ELEVATION
	ENGINEERED FILL REQUIRED
	TERRACING 3:1 SLOPE MAXIMUM (UNLESS OTHERWISE SHOWN)
	DIRECTION OF EMERGENCY OVERLAND FLOW
	PROPOSED VALVE BOX
	PROPOSED VALVE CHAMBER
	PROPOSED FIRE HYDRANT
	PROPOSED SANITARY SEWER MANHOLE
	PROPOSED STORM SEWER MANHOLE
	PROPOSED CATCHBASIN MANHOLE
	PROPOSED CATCHBASIN
	PROPOSED CB 1
	PROPOSED DEPRESSED CURB LOCATION
	PROPOSED BARRIER CURB
	PROPOSED HEAVY DUTY ASPHALT
	100mm RIGID INSULATION UNDERSIDE OF SIDEWALK
	OVERLAND SLOPE LOCATION
	TWO LOCATION AS PER CITY STD
	MAXIMUM STATIC PONDING LIMITS

PAVEMENT STRUCTURE - CAR PARKING AREAS
75mm HL-3 or SUPERPAVE 12.5 ASPHALTIC CONCRETE
150mm OPSS GRANULAR 'A' BASE
300mm OPSS GRANULAR 'B' TYPE II SUB BASE


PAVEMENT STRUCTURE - ACCESS LANES AND HEAVY TRUCK
50mm HL-3 or SUPERPAVE 12.5 ASPHALTIC CONCRETE
50mm HL-8 or SUPERPAVE 19.0 ASPHALTIC CONCRETE
150mm OPSS GRANULAR 'A' BASE
450mm OPSS GRANULAR 'B' TYPE II SUB BASE

3	REVISED PER CITY COMMENTS	MJS	KS	25.08.19
2	REVISED PER CITY COMMENTS	MJS	KS	25.07.22
1	ISSUED FOR TENDER	MJS	GR	25.06.24
0	ISSUED FOR SPA	MJS	KS	25.04.17
Revision		By	Appd.	YY.MM.DD
File Name: 16040212 D8.dwg		MJS	DT	25.03.31
		Dwn.	Chkd.	OSan.
				YY.MM.DD

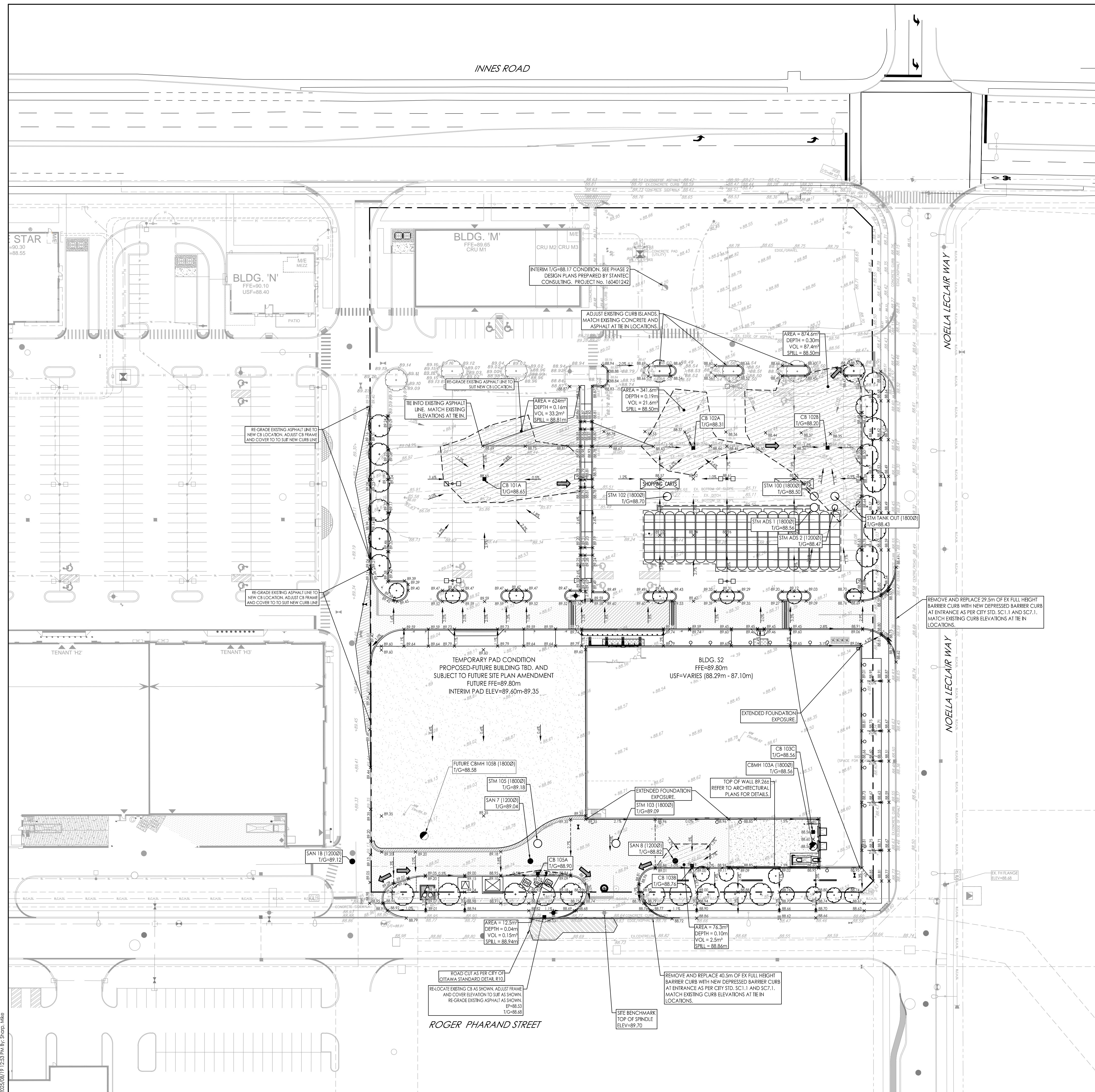
Permit-Seal

SmartREIT (Orleans II) Inc. &
Mer Bleue Shopping Centres Limited
3200 HIGHWAY 7, VAUGHAN, ON, L4K 5Z5
Orleans II Frontage Phase 3
2025 MER BLEUE ROAD
OTTAWA, ON, CANADA

GRADING PLAN

Project No. 160402122	<div style="display: flex; align-items: center;"> <div style="margin-right: 10px;">Scale</div> <div style="display: flex; align-items: center;"> <div style="text-align: center; margin-right: 10px;">0</div> <div style="text-align: center; margin-right: 10px;">5</div> <div style="text-align: center; margin-right: 10px;">15</div> <div style="text-align: center;">25m</div> </div> </div> <div style="display: flex; align-items: center;"> <div style="text-align: center; margin-right: 10px;">1:500</div>  </div>
Drawing No.	<div style="display: flex; justify-content: space-between;"> <div>Sheet</div> <div>Revision</div> </div>

GP-1 4 of 7 3
PLAN # 19289



\\1604\active\160402122\design\drawing\160402122 DB.dwg