

Stantec
 Stantec Consulting Ltd.
 400 - 1331 Clyde Avenue
 Ottawa ON
 Tel. 613.722.4420
 www.stantec.com

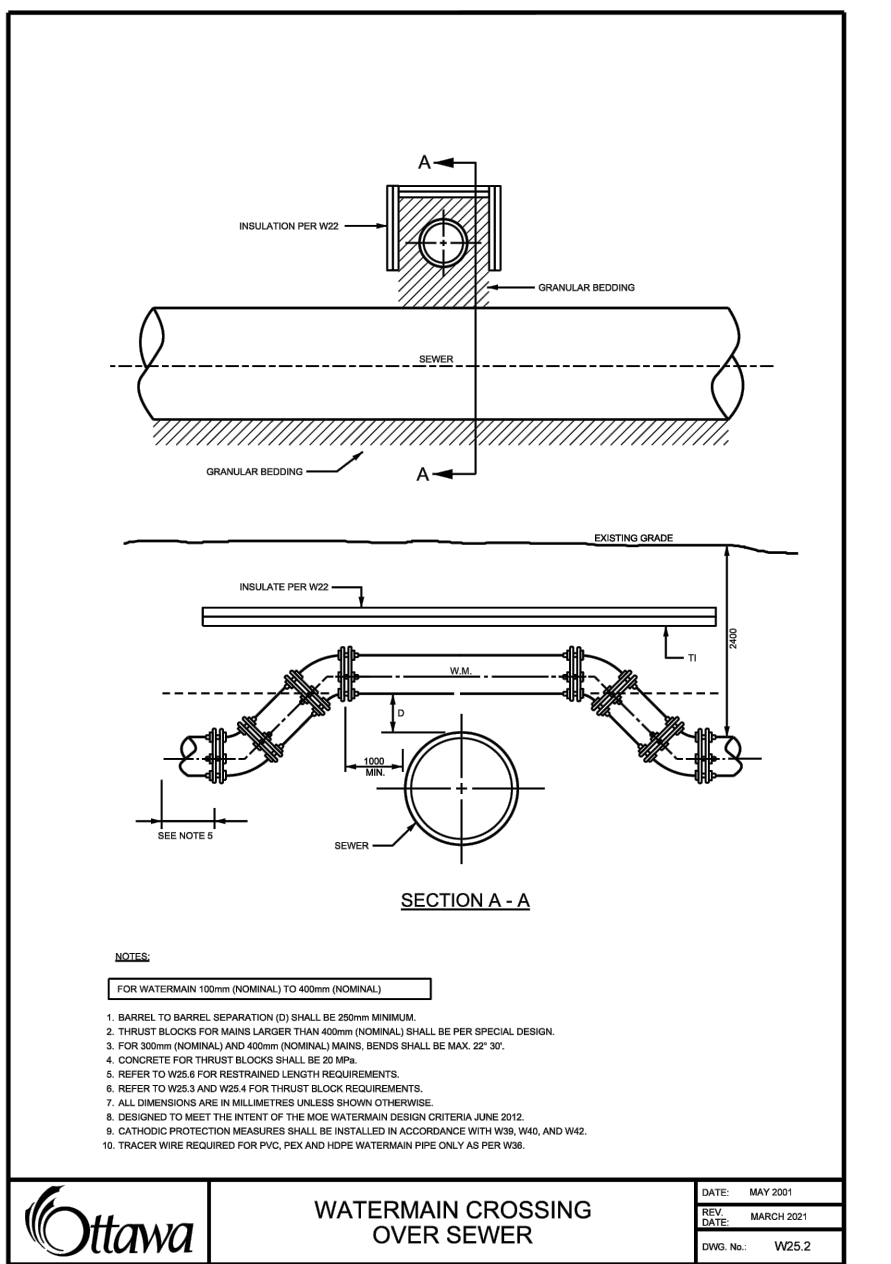
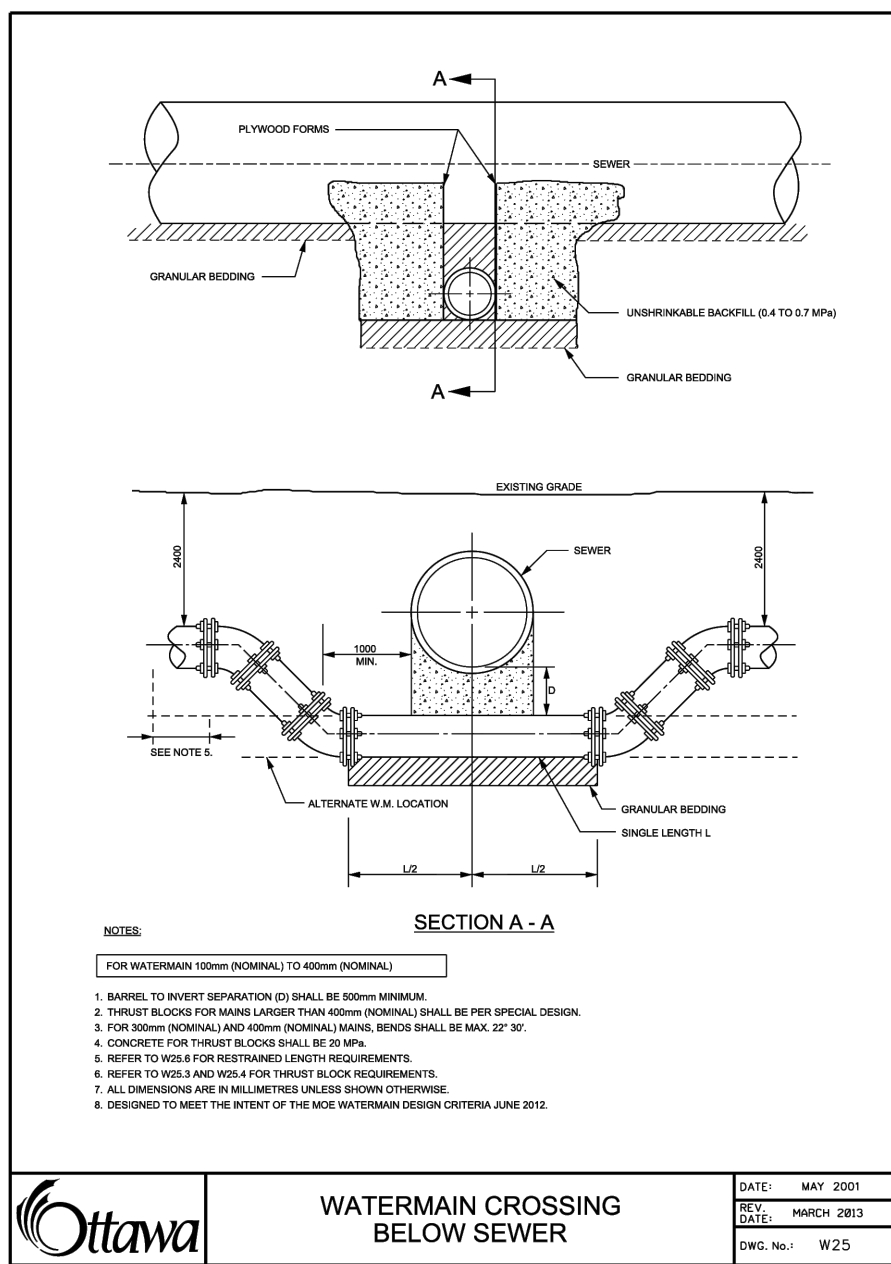
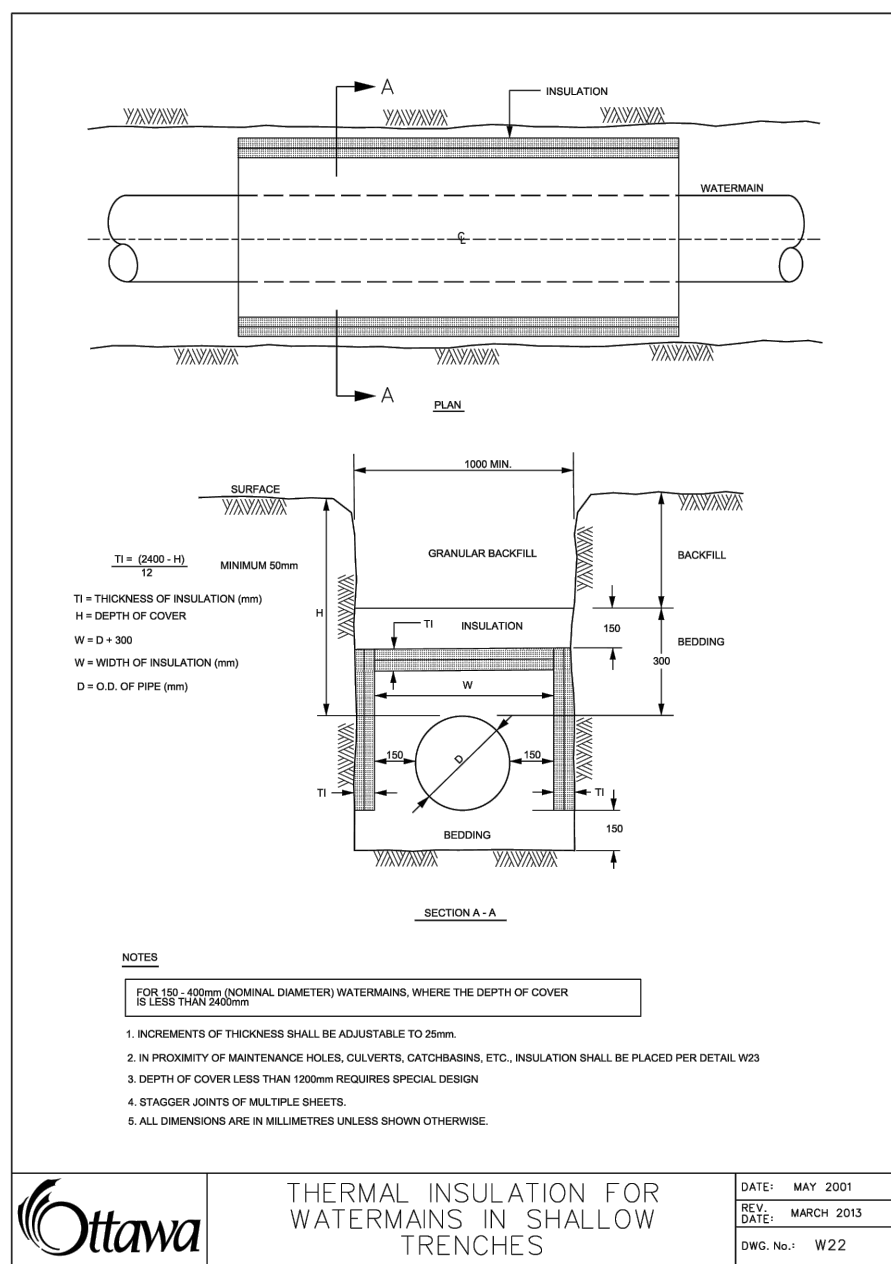
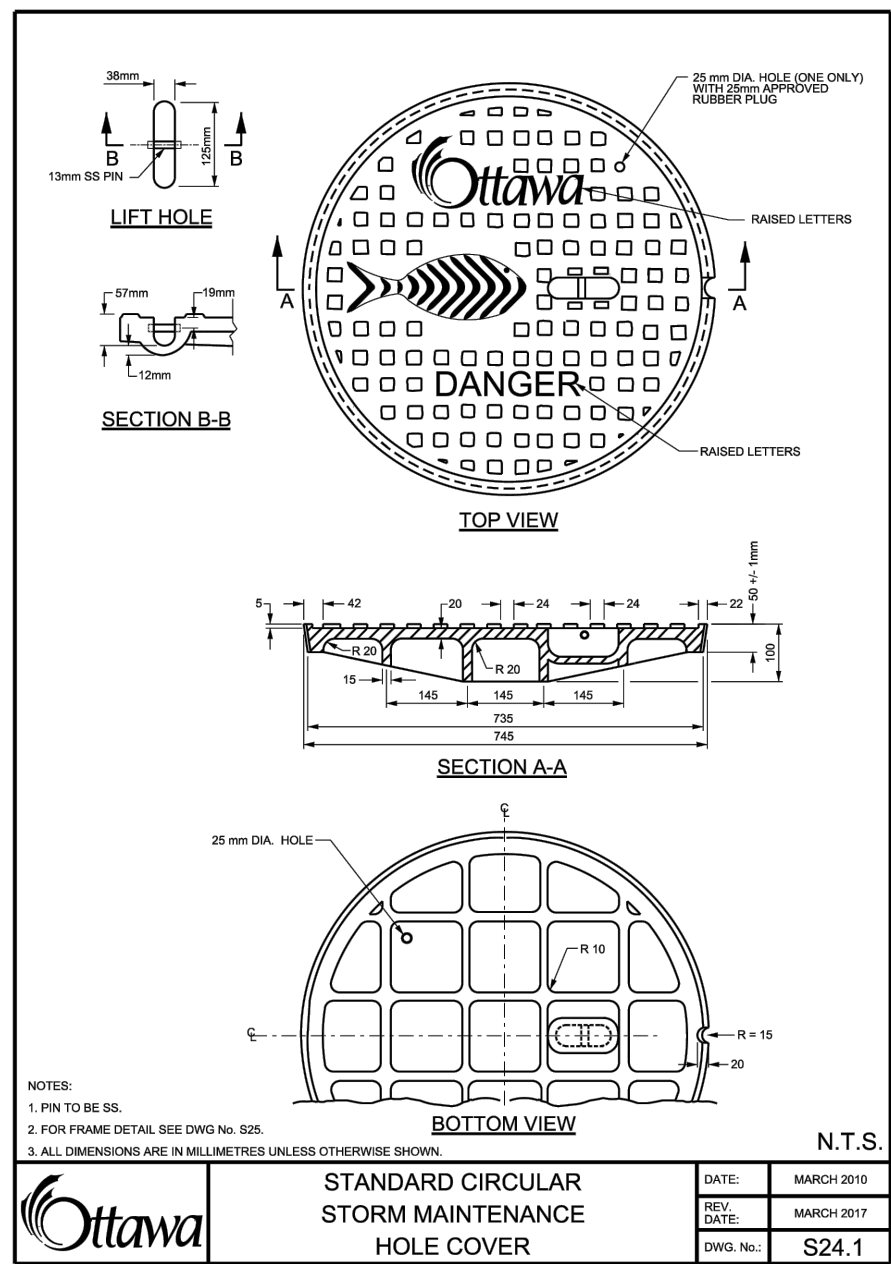
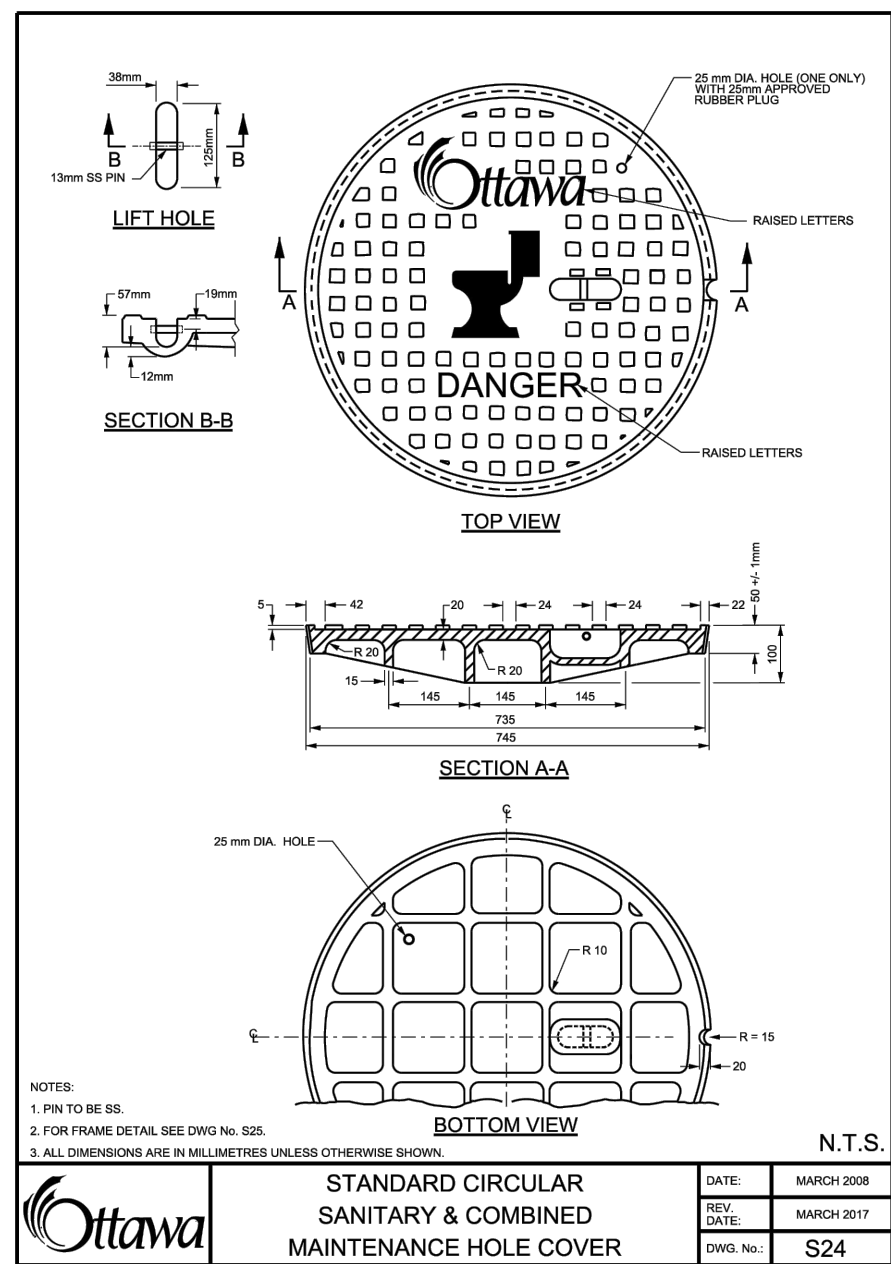
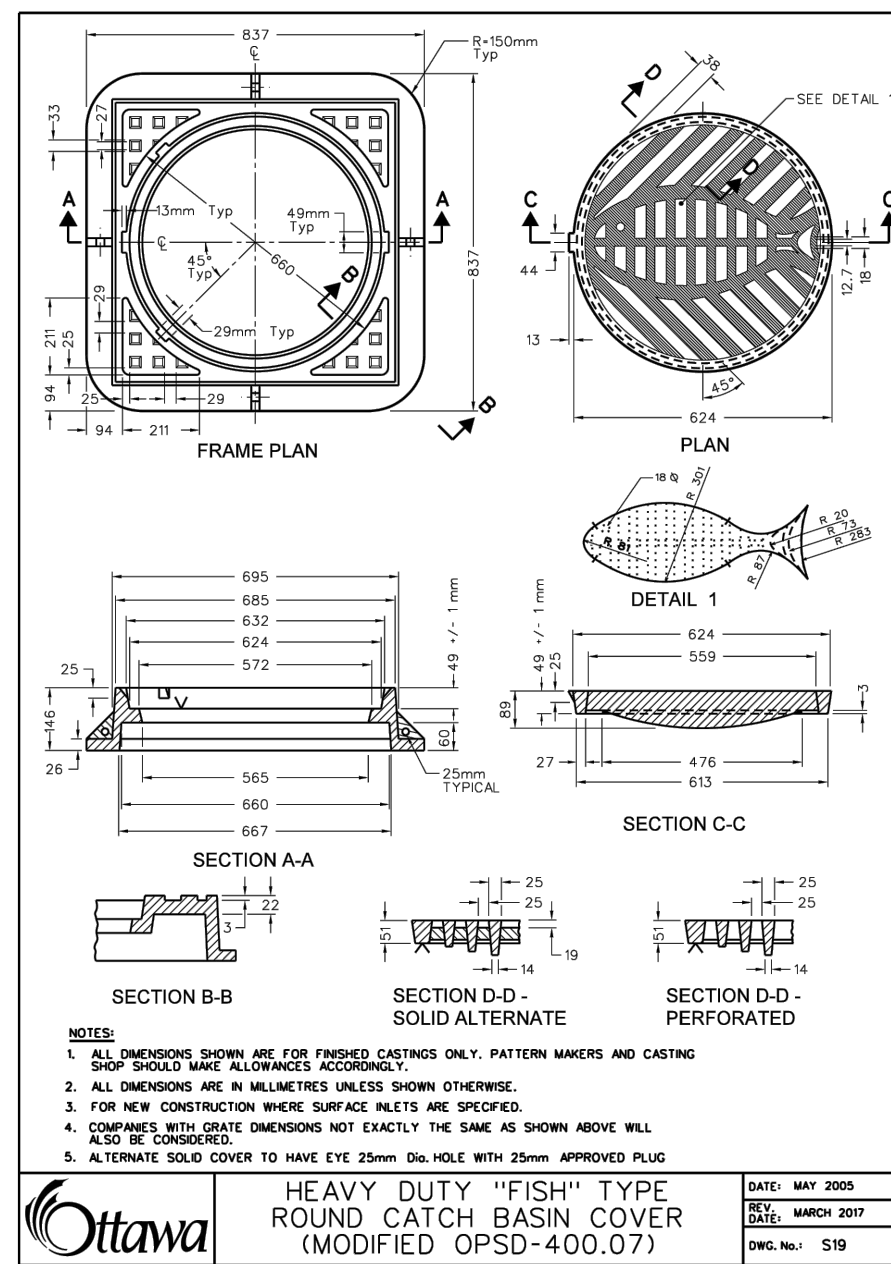
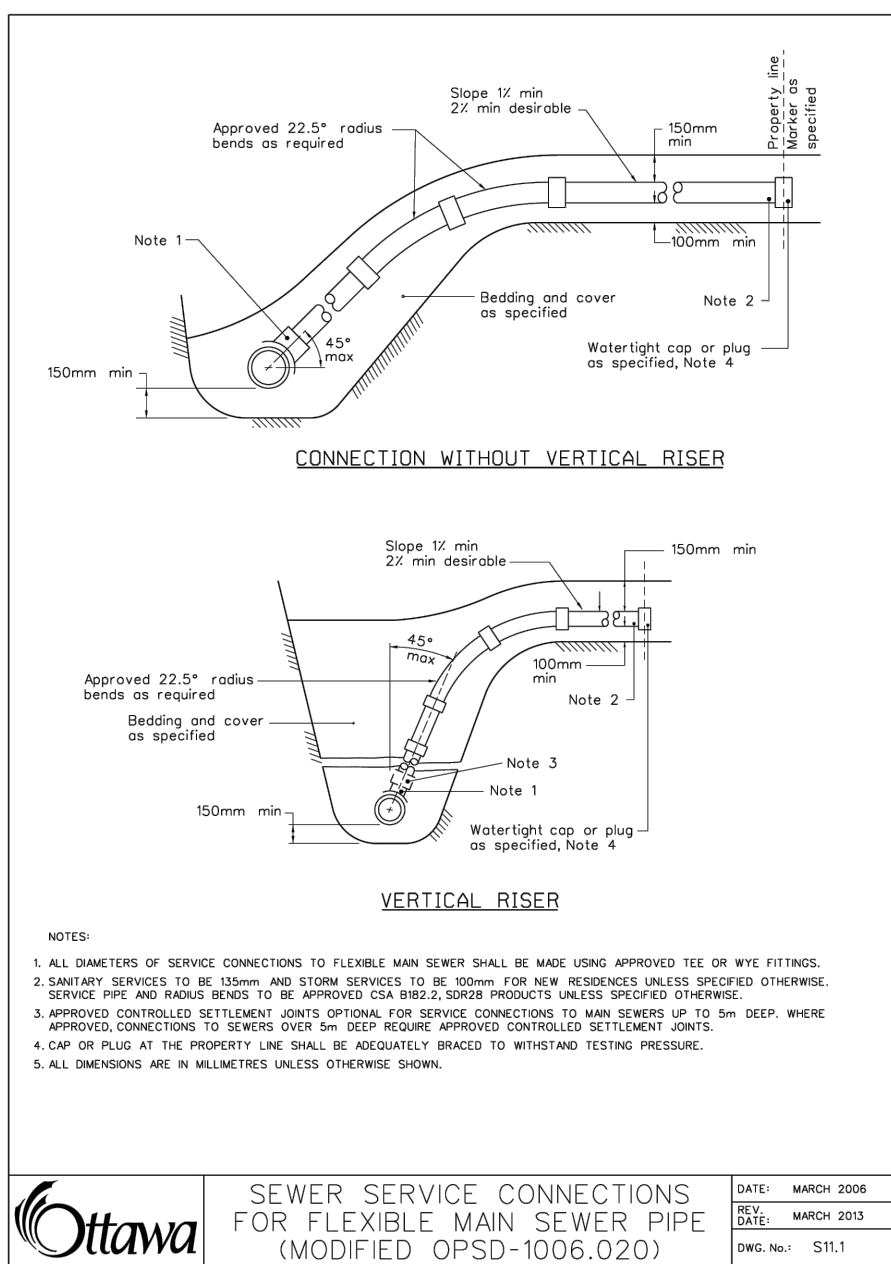
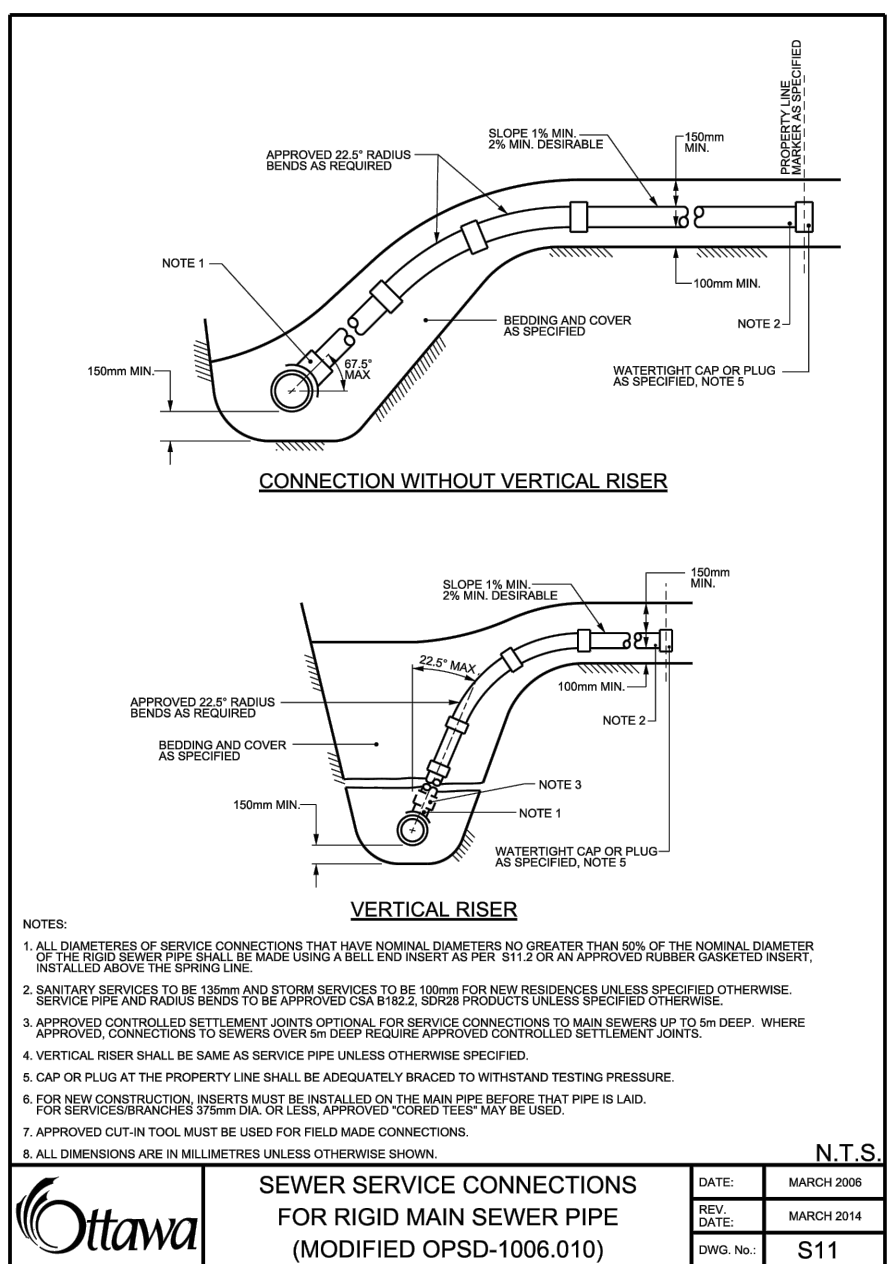
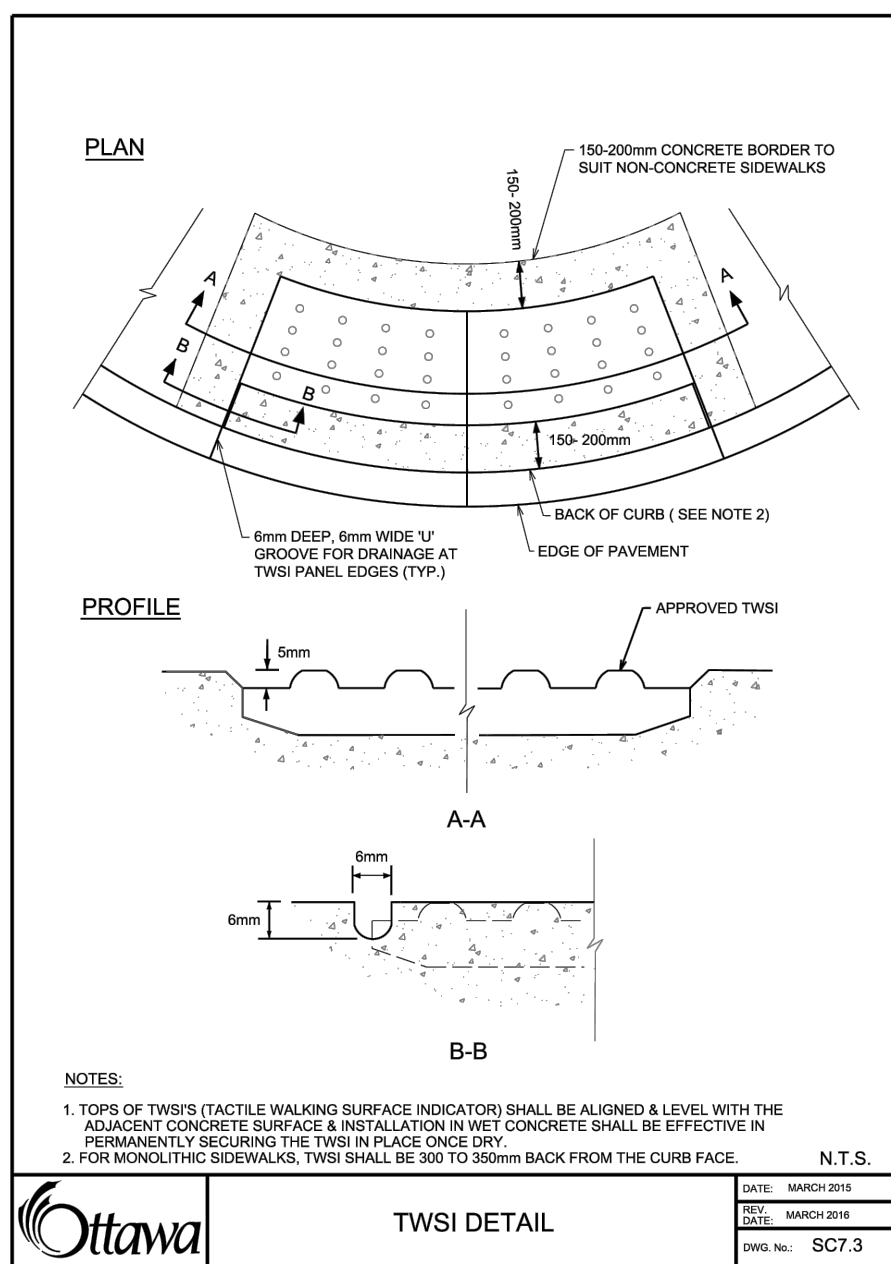
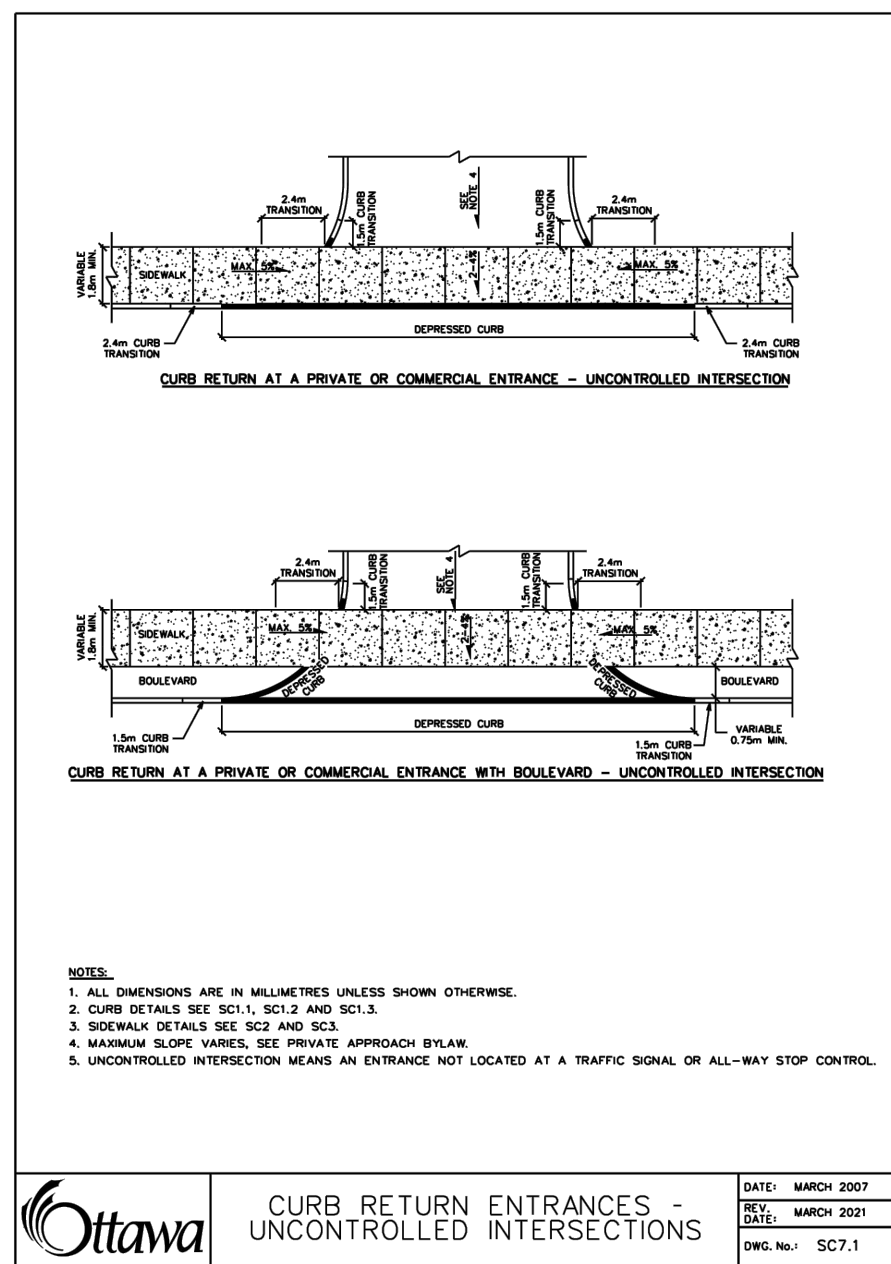
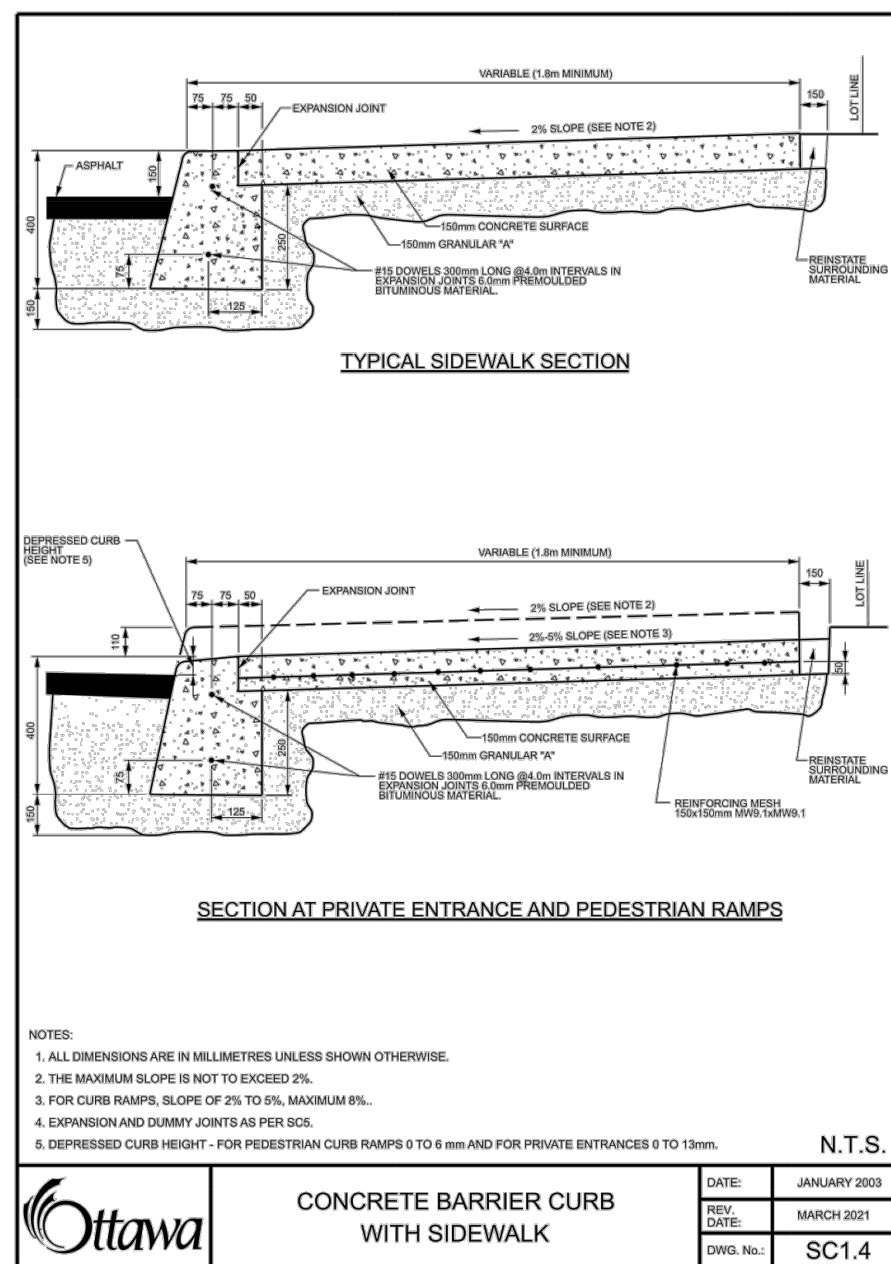
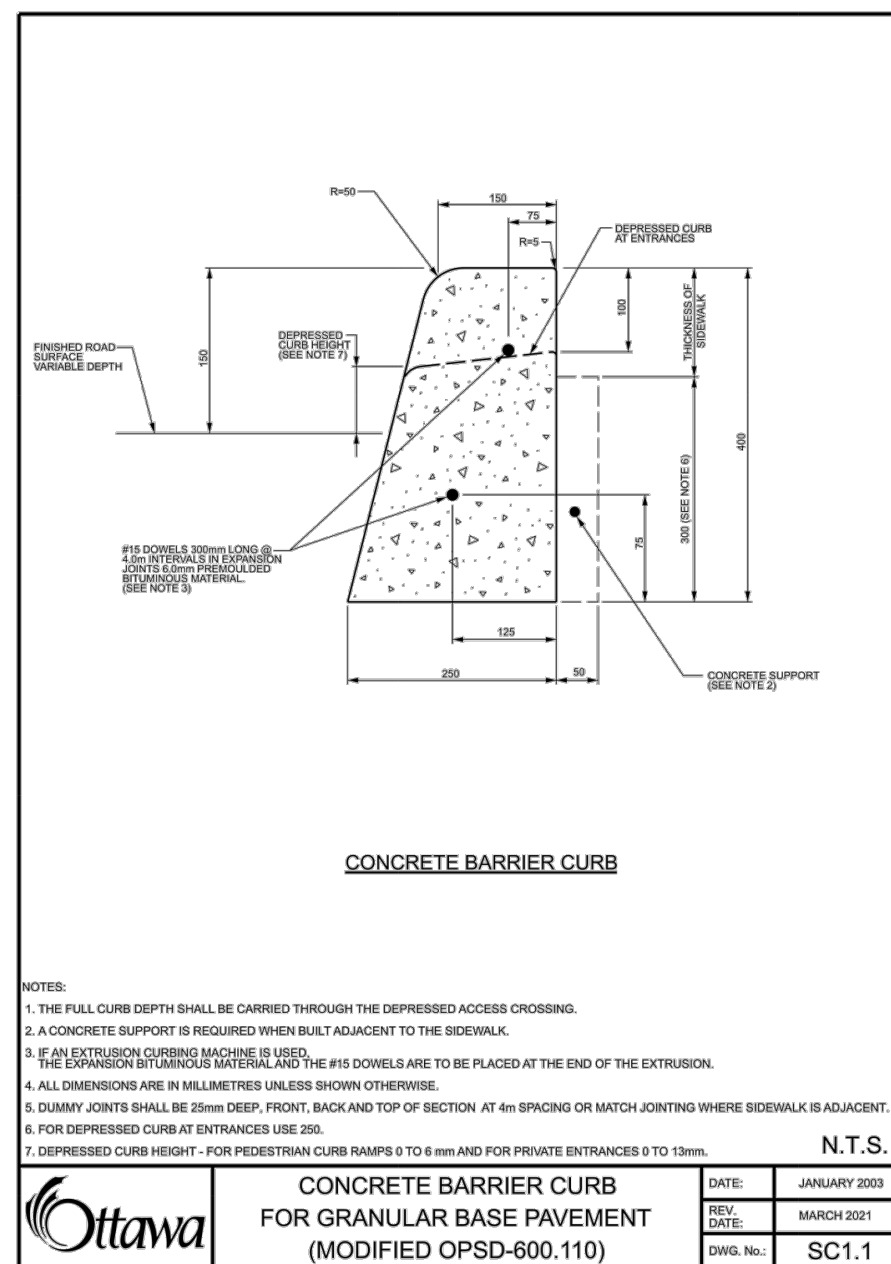
Copyright Reserved

The Contractor shall verify and be responsible for all dimensions. DO NOT scale the drawing - any errors or omissions shall be reported to Stantec without delay.

The Copyrights to all designs and drawings are the property of Stantec. Reproduction or use for any purpose other than that authorized by Stantec is forbidden.

Legend

- PROPOSED SILT FENCE BOUNDARY AS PER OPSD 219.110
- PROPOSED CATCH BASIN PROTECTION AS PER TERRAFIX SILTSACK DETAIL
- PROPOSED MUD MAT LOCATION
- PROPOSED VALVE BOX
- PROPOSED VALVE CHAMBER
- PROPOSED FIRE HYDRANT
- PROPOSED SANITARY SEWER MANHOLE
- PROPOSED STORM SEWER MANHOLE
- PROPOSED CATCH BASIN



3	REVISED PER CITY COMMENTS	MJS	KS	25.08.19
2	REVISED PER CITY COMMENTS	MJS	KS	25.07.22
1	ISSUED FOR TENDER	MJS	GR	25.04.24
0	ISSUED FOR SPA	MJS	KS	25.04.17
Revision		By	Appd.	YY.MM.DD
File Name: 160402122 DB.dwg		MJS	DT	25.03.31
Permit-Seal		Dwn.	Chkd.	Dgn.

Client/Project
 SmartREIT (Orleans II) Inc. &
 Mer Bleue Shopping Centres Limited
 3200 HIGHWAY 7, VAUGHAN, ON, L4K 5Z5
 Orleans II Frontage Phase 3
 2025 MER BLEUE ROAD
 OTTAWA, ON, CANADA

EROSION CONTROL PLAN AND DETAIL SHEET

Project No.	Scale	0 5 15 25m
160402122	1:500	
Drawing No.	Sheet	Revision