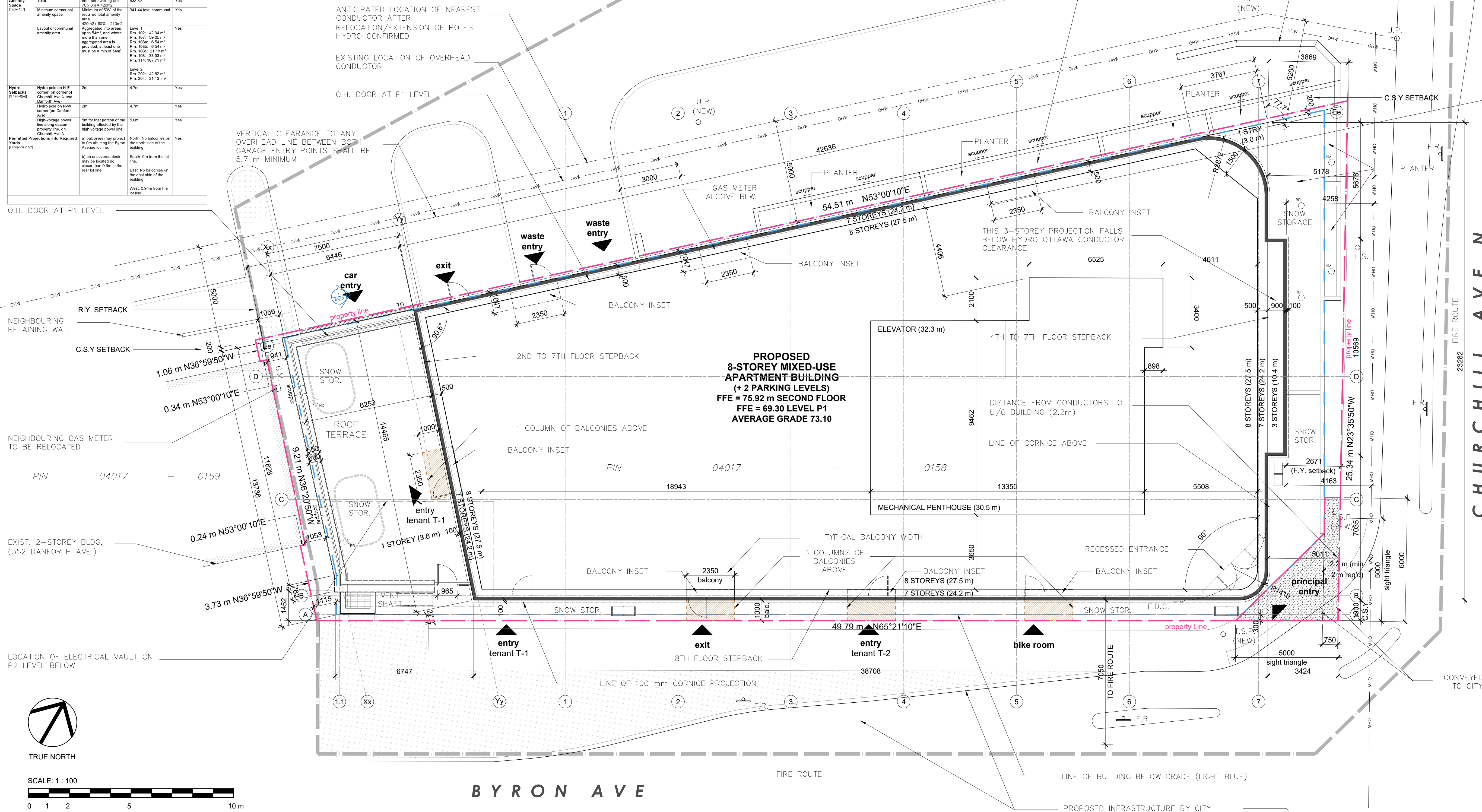


[illegible]

Statistics for Cash-in-Lieu of Parkland calculations	
Gross Land Area Subject to Development (after conveyance of eight triangle)	996.07 m ²
Gross Land Area Subject to Development (prior to conveyance of eight triangle)	1009.6 m ²
Number of Existing Units	0
Number of Proposed Units	70
Total Gross Floor Area	4,188.07 m ²
Gross Floor Area - Residential	3,991.30 m ²
Gross Floor Area - Commercial	196.77 m ²



SURVEY INFORMATION TAKEN FROM
SURVEY PREPARED BY ANNIS O'SULLIVAN
VOLLEBEKK LTD., DATED DECEMBER 9,
2021, (AMENDED JULY 12, 2022) PROJECT
NO. 17926, REFERENCE NO. 22329-21

<p><u>CLIENT / OWNER :</u></p> <p>CHURCHILL PROJECTS INC. 5-145 SELECT AVE. TORONTO, ON M1V 5M8 616-292-9920</p>	<p><u>LANDSCAPE ARCHITECT :</u></p> <p>BIR GROUP 401 ALBERT STREET, SUITE 101 WATERLOO, ON N2L 3P3 519-855-2285</p>
<p><u>CONSULTING PLANNER :</u></p> <p>FOTENH 364 COOPER STREET, SUITE 300 OTTAWA, ON K2P 2H7 613-730-5709</p>	<p><u>SURVEYOR:</u></p> <p>ANNIS, O'SULLIVAN, VOLLEBEKK LTD. 14 CONSCIENCE GATE, SUITE 500 OTTAWA, ON K2E 2756 613-727-0850</p>
<p><u>ARCHITECT :</u></p> <p>OPEN PLAN ARCHITECTS INC. 340 GLADSTONE AVE., SUITE 301, OTTAWA, ON K2P 0Y8 613-234-8883</p>	<p><u>NOISE, VIBRATION & WIND ENGINEER:</u></p> <p>GRADIENT WIND ENGINEERING 127 WALGREEN ROAD, OTTAWA, ON K0A 1L0 613-836-0924</p>
<p><u>STRUCTURAL ENGINEER :</u></p> <p>D + M STRUCTURAL 333 PRESTON STREET, SUITE 110 OTTAWA, ON K1S 5N4 613-651-9490</p>	<p><u>TRANSPORTATION ENGINEER:</u></p> <p>CASTELGLEN CONSULTANTS INC. 2460 LANCASTER AVE. OTTAWA, ON K1B 4S5 613-731-4052</p>

06	Issued for response to SPC comments - 5th round	13 Aug. 2025
05	Issued for tender	07 July 2025
04	Issued for SPC - 5th submission	02 July 2025
03	Issued for coordination	29 May 2025
02	Issued for minor variance	30 April 2025
01	Issued for 95% tender - base building	29 April 2025
rev. / issue	description	date MM/DD/YY

THE ARCHITECT WAIVES ANY AND ALL RESPONSIBILITY AND LIABILITY FOR PROBLEMS WHICH ARISE FROM FAILURE TO FOLLOW THESE PLANS, SPECIFICATIONS, AND THE DESIGN INTENT THEY CONVEY, OR FOR PROBLEMS WHICH ARISE FROM OTHERS' FAILURE TO OBTAIN AND/OR FOLLOW THE ARCHITECT'S GUIDANCE WITH RESPECT TO ANY ERROR, OMISSION, INCONSISTENCIES, AMBIGUITIES OR CONFLICTS WHICH ARE ALLEGED.

IT IS THE RESPONSIBILITY OF THE APPROPRIATE CONTRACTOR TO CHECK AND VERIFY ALL DIMENSIONS ON SITE AND PROMPTLY REPORT ALL ERRORS AND/OR OMISSIONS TO THE CONSULTANT BEFORE WORK COMMENCES.

ALL WORK IS TO FOLLOW THE OBC 2012 AND ANY OTHER APPLICABLE CODES AND REGULATIONS.

DO NOT SCALE DRAWINGS.

THESE DRAWINGS ARE NOT TO BE USED FOR CONSTRUCTION UNLESS A BUILDING PERMIT IN RESPECT OF THIS PROJECT HAS BEEN GRANTED BY AUTHORITIES AND THEY ARE ISSUED FOR CONSTRUCTION.

COPYRIGHT RESERVED.


<p>professional stamp</p> 	<p>project north</p> 
---	--

open plan architects inc.

340 gladstone ave. | suite 301 | ottawa | on
613-883-5090 info@openplan.ca

424 CHURCHILL AVENUE N.,
APARTMENT BUILDING

SITE PLAN

drawn	KDB	date	2022-JAN-06
approved	KDB	revision	
project no.	2109	scale	1 : 100
drawing no.			

A001

GALV. STEEL BIKE RING,
REFER TO LANDSCAPE ARCH.

BENCH, REFER TO LANDSCAPE
ARCHITECT

BUILDING ENTRANCE

AFF

ELEVATION MARKER, ### mm
ABOVE FINISHED FLOOR

F.D.C.

FIRE DEPT. CONNECTION,
REFER TO MECHANICAL

F.R.

FIRE ROUTE SIGN,
REFER TO CIVIL

F.H.

FIRE HYDRANT,
REFER TO CIVIL

U.P.

HYDRO UTILITY POLE,
REFER TO HYDRO

TREE, REFER TO
LANDSCAPE ARCHITECT

T.S.P.

TRAFFIC SIGNAL POLE,
REFER TO CIVIL

LANDSCAPE MATERIAL, REFER
TO LANDSCAPE ARCHITECT

GRASS, REFER TO
LANDSCAPE ARCHITECT

POURED CONCRETE

PAVERS, REFER TO
LANDSCAPE ARCHITECT

YELLOW DIAGONAL ROAD PAINT

CONCRETE WALKWAY, REFER
TO LANDSCAPE ARCHITECT

05

Issued for response to SPC comments - 5th round

13 Aug. 2025

04

Issued for tender

07 July 2025

03

Issued for SPC - 5th submission

02 July 2025

02

Issued for coordination

29 May 2025

01

Issued for 95% tender - base building

29 April 2025

rev. /
issue

description

date

MM/DD/YY

THE ARCHITECT WAIVES ANY AND ALL RESPONSIBILITY AND LIABILITY FOR PROBLEMS WHICH ARISE FROM FAILURE TO FOLLOW THESE PLANS, SPECIFICATIONS, AND THE DESIGN INTENT THEY CONVEY, OR FOR PROBLEMS WHICH ARISE FROM OTHERS' FAILURE TO OBTAIN AND/OR FOLLOW THE ARCHITECT'S GUIDANCE WITH RESPECT TO ANY ERRORS, OMISSIONS, INCONSISTENCIES, AMBIGUITIES OR CONFLICTS WHICH ARE ALLEGED.

IT IS THE RESPONSIBILITY OF THE APPROPRIATE CONTRACTOR TO CHECK AND VERIFY ALL DIMENSIONS ON SITE AND PROMPTLY REPORT ALL ERRORS AND/OR OMISSIONS TO THE CONSULTANT BEFORE WORK COMMENCES.

ALL WORK IS TO FOLLOW THE OBC 2012 AND ANY OTHER APPLICABLE CODES AND REGULATIONS.

DO NOT SCALE DRAWINGS.

THESE DRAWINGS ARE NOT TO BE USED FOR CONSTRUCTION UNLESS A BUILDING PERMIT IN RESPECT OF THIS PROJECT HAS BEEN GRANTED BY AUTHORITIES AND THEY ARE ISSUED FOR CONSTRUCTION.

COPYRIGHT RESERVED.

professional stamp

ONTARIO ASSOCIATION
OF
ARCHITECTS
KRISTOPHER D. BENES
LICENCE
6432

project north

open plan architects inc.

340 gladstone ave. | suite 301 | ottawa | on
613-883-5090 info@openplan.ca

project

424 CHURCHILL AVENUE N.,
APARTMENT BUILDING

drawing

SITE PLAN -
WALKWAYS & LANDSCAPING

drawn

KDB

date

2022-JAN-06

approved

KDB

revision

1

project no.

2109

scale

1 : 100

drawing no.

A001.1

1

SITE PLAN

1 : 100

0

1

2

5

10 m

SCALE: 1 : 100

TRUE NORTH

SURVEY INFORMATION TAKEN FROM
SURVEY PREPARED BY ANNIS O'SULLIVAN
VOLLEBEKK LTD., DATED DECEMBER 9,
2021, (AMENDED JULY 12, 2022) PROJECT
NO. 17926, REFERENCE NO. 22329-21

04017

0159

04017

0158

04017

0159

04017

0158

04017

0159

04017

0158

04017

0159

04017

0158

04017

0159

04017

0158

04017

0159

04017

0158

04017

0159

04017

0158

04017

0159

04017

0158

04017

0159

04017

0158

04017

0159

04017

0158

04017

0159

04017

0158

04017

0159

04017

0158

04017

0159

04017

0158

04017

0159

04017

0158

04017

0159

04017

0158

04017

0159

04017

0158

04017

0159

04017

0158

04017

0159

04017

0158

04017

0159

04017

0158

04017

0159

04017

0158

04017

0159

04017

0158

04017

0159

04017

0158

04017

0159

04017

0158

04017

0159

04017

0158

04017

0159

04017

0158

04017

0159

04017

0158

04017

0159

04017

0158

04017

0159

04017

0158

04017

0159

04017

0158

04017

0159

04017

0158

04017

0159

04017

0158

04017

0159

04017

0158

04017

0159

04017

0158

04017

0159

04017

0158

04017

0159

04017

0158

04017

0159

04017

0158

04017

0159

04017

0158

04017

0159

04017

0158

04017

0159

04017

0158

04017

0159

04017

0158

04017

0159

04017

0158

04017

0159

04017

0158

04017

0159

04017

0158

04017

0159

04017

0158

04017

0159

04017

0158

04017

0159

04017

0158

04017

0159

04017

0158

04017

0159

04017

0158

04017

0159

04017

0158

04017

0159

04017

0158

04017

0159

04017

0158

04017

0159

04017

0158

04017

0159

04017

0158

04017

0159

04017

0158

04017

0159

04017

0158

04017

0159

04017

0158

04017

0159

04017

0158

04017

0159

04017

0158

04017

0159

04017

0158

04017

0159

04017

0158

04017

0159

04017

0158

04017

0159

04017

0158

04017

0159

04017

0158

04017

0159

04017

0158

04017

0159

04017

0158

04017

0159

04017

0158

04017

0159

04017

0158

04017

0159

04017

0158

04017

0159

04017

0158

04017

0159

04017

0158

04017

0159

04017

0158

04017

0159

04017

0158

04017

0159

04017

0158

04017

0159

04017

0158

04017

0159

04017

0158

04017

0159

04017

0158

04017

0159

04017

0158

04017

0159

04017

0158

04017

0159

04017

0158

04017

0159

04017

0158

04017

0159

04017

0158

04017

0159

04017

0158

04017

0159

04017

0158

04017

0159

04017

0158

04017

0159

04017

0158

04017

0159

04017

0158

04017

0159

04017

0158

04017

0159

04017

0158

04017

0159

04017

0158

04017

0159

04017

0158

04017

0159

04017

0158

04017

0159

04017

0158

04017

0159

04017

0158

04017

0159

04017

0158

04017

0159

04017

0158

04017

0159

04017

0158

04017

0159

04017

0158

04017

0159

04017

0158

04017

0159

04017

0158

04017

0159

04017

0158

04017

0159

04017

0158

04017

0159

04017

0158

04017

0159

04017

0158

04017

0159

04017

0158

04017

0159

04017

0158

04017

0159

04017

0158

04017

0159

04017

0158

04017

0159

04017

0158

04017

0159

04017

0158

04017

0159

04017

0158

04017

0159

04017

0158

04017

0159

04017

0158

04017

0159

04017

0158

04017

0159

04017

0158

04017

0159

04017

0158

04017

0159

04017

0158

04017

0159

04017

0158

04017

0159

04017

0158

04017

0159

04017

0158

04017

0159

04017

0158

04017

0159

04017

0158

04017

0159

04017

0158

04017

0159

04017

0158

04017

0159

04017

0158

04017

0159

04017

0158

04017

0159

04017

0158

04017

0159

04017

0158

04017

0159

04017

0158

04017

0159

04017

0158

04017

0159

04017

0158

04017

0159

04017

0158

04017

0159

04017

0158

04017

0159

04017

0158

04017

0159

04017

0158

04017

0159

04017

0158

04017

0159

04017

0158

04017

0159

04017

0158

04017

0159

04017

0158

04017

0159

04017

0158

04017

0159

04017

0158

04017

0159

04017

0158

04017

0159

04017

0158

04017

0159

04017

0158

04017

0159

04017

0158

04017

0159

04017

0158

04017

0159

04017

0158

04017

0159

04017

0158

04017

0159

04017

0158

04017

0159

04017

0158

04017

0159

04017

0158

04017

0159

04017

0158

04017

0159

04017

0158

04017

0159

04017

0158

04017

0159

04017

0158

04017

0159

04017

0158

04017

0159

04017

0158

04017

0159

04017

0158

04017

0159

04017

0158

04017

0159

04017

0158

04017

0159

04017

0158

04017

0159

04017

0158

04017

0159

04017

0158

04017

0159

04017

0158

04017

0159

04017

0158

04017

0159

04017

0158

04017

0159

04017

0158

04017

0159

04017

0158

04017