

LEGEND AND NOTES

□	DENOTES	MONUMENT PLANTED	H	DENOTES	HYDRO POLE
■	"	MONUMENT FOUND	B	"	BELL POLE
SIB	"	STANDARD IRON BAR	B&H	"	BELL & HYDRO POLE
SSIB	"	SHORT STANDARD IRON BAR	LS	"	LAMP STANDARD
IB	"	IRON BAR	OHW	"	OVERHEAD WIRES
CP	"	CONCRETE PIN	CONC.	"	CONCRETE
CC	"	CUT CROSS IN CONCRETE WALK	CLF	"	CHAIN LINK FENCE
ORP	"	OBSERVED REFERENCE POINT	BF	"	BOARD FENCE
WT	"	WITNESS	W&MF	"	WOOD & SHEET METAL FENCE
ms	"	MEASURED	SRW	"	STONE RETAINING WALL
By Prop	"	SET BY PROPORTION	CB	"	CATCH BASIN
SRPR	"	SURVEYOR'S REAL PROPERTY REPORT	MHSAN	"	SANITARY MAINTENANCE HOLE
P1	"	REGISTERED PLAN No. 18	T/G	"	TOP OF GRATE OR UD ELEVATION
P2	"	EXPROPRIATION PLAN INSTRUMENT CT166093	TB B	"	TERMINAL BOX - BELL CANADA
P3	"	REGISTERED PLAN 4M-430	GM	"	GAS METER
P4	"	PLAN SR-7460	BOL	"	BOLLARD
P5	"	PLAN 4R-17552	AC	"	GROUND MOUNTED AIR CONDITIONER
P6	"	SRPR DATED SEPTEMBER 16, 2011 BY ANNIS, O'SULLIVAN, VOLLEBEKK LTD. (FILE 12370-11)	DS	"	DOOR SILL ELEVATION
	"		PO	"	WOOD POST OR SUPPORT COLUMN
P7	"	SRPR DATED MARCH 30, 2017 BY ANNIS, O'SULLIVAN, VOLLEBEKK LTD. (FILE 19442-17)	TBM	"	TEMPORARY BENCHMARK
	"		N.T.S.	"	NOT TO SCALE
DI	"	INSTRUMENT N584765.			
D2	"	INSTRUMENT N720533			
647	"	H.R. FARLEY O.L.S.			
889	"	W.H. MOFFATT O.L.S.			
1175	"	H.A.K. SHIPMAN O.L.S.			
AOG	"	ANNIS, O'SULLIVAN, VOLLEBEKK LTD.			
OU	"	ORIGIN UNKNOWN			

DISTANCES:

DISTANCES SHOWN ON THIS PLAN ARE GROUND DISTANCES AND CAN BE USED TO COMPUTE GRID DISTANCES BY MULTIPLYING BY A COMBINED SCALE FACTOR OF 0.999941

BEARINGS:

BEARINGS ARE MTM GRID BEARINGS, DERIVED BY REAL TIME NETWORK GNSS OBSERVATIONS ON OBSERVED REFERENCE POINTS 'A' AND 'B' SHOWN HEREON, AND ARE REFERRED TO THE NAD83 ORIGINAL MTM ZONE 9 COORDINATE SYSTEM.

BEARING ROTATION:

FOR THE PURPOSE OF COMPARISON, ASTRONOMIC BEARINGS HAVE BEEN ROTATED AS FOLLOWS:

PLAN	ROTATION	DIRECTION
(p2 & p6)	00°30'00"	COUNTER-CLOCKWISE
(p3, p4 & p5)	00°35'25"	COUNTER-CLOCKWISE

ELEVATIONS:

ELEVATIONS ARE CANADA GEODETIC VERTICAL DATUM 28/78 DERIVED BY REAL TIME NETWORK GPS OBSERVATIONS REFERENCED TO THE CANADA HT\_2 GEOD MODEL.

THE CONTOUR INTERVAL IS 0.25 METRES.

CAUTION:

THE LOCATION AND CONFIGURATION OF UNDERGROUND SERVICES AND UTILITIES IS NOT WITHIN THE SCOPE OF THIS SURVEY. IT IS THE RESPONSIBILITY OF THE CONTRACTOR TO VERIFY THE CONFIGURATION AND LOCATION OF UNDERGROUND SERVICES AT THE SITE PRIOR TO CONSTRUCTION.

SURVEYOR'S CERTIFICATE

I CERTIFY THAT:

1. THIS SURVEY AND PLAN ARE CORRECT AND IN ACCORDANCE WITH THE SURVEYS ACT AND THE SURVEYORS ACT AND THE REGULATIONS MADE UNDER THEM.

2. THE SURVEY WAS COMPLETED ON THE 20th DAY OF DECEMBER, 2022.

JANUARY 6, 2023

DATE

THIS PLAN OF SURVEY RELATES TO AOLS PLAN SUBMISSION FORM NUMBER V-35837.

John Gauthier  
JOHN GAUTHIER  
ONTARIO LAND SURVEYOR

PLAN OF SURVEY WITH  
TOPOGRAPHY OF LOT 68  
REGISTERED PLAN No. 18  
AND PART OF LOT 3  
CONCESSION "A"  
(BROKEN FRONT)  
GEOGRAPHIC TOWNSHIP  
OF NORTH GOWER  
CITY OF OTTAWA

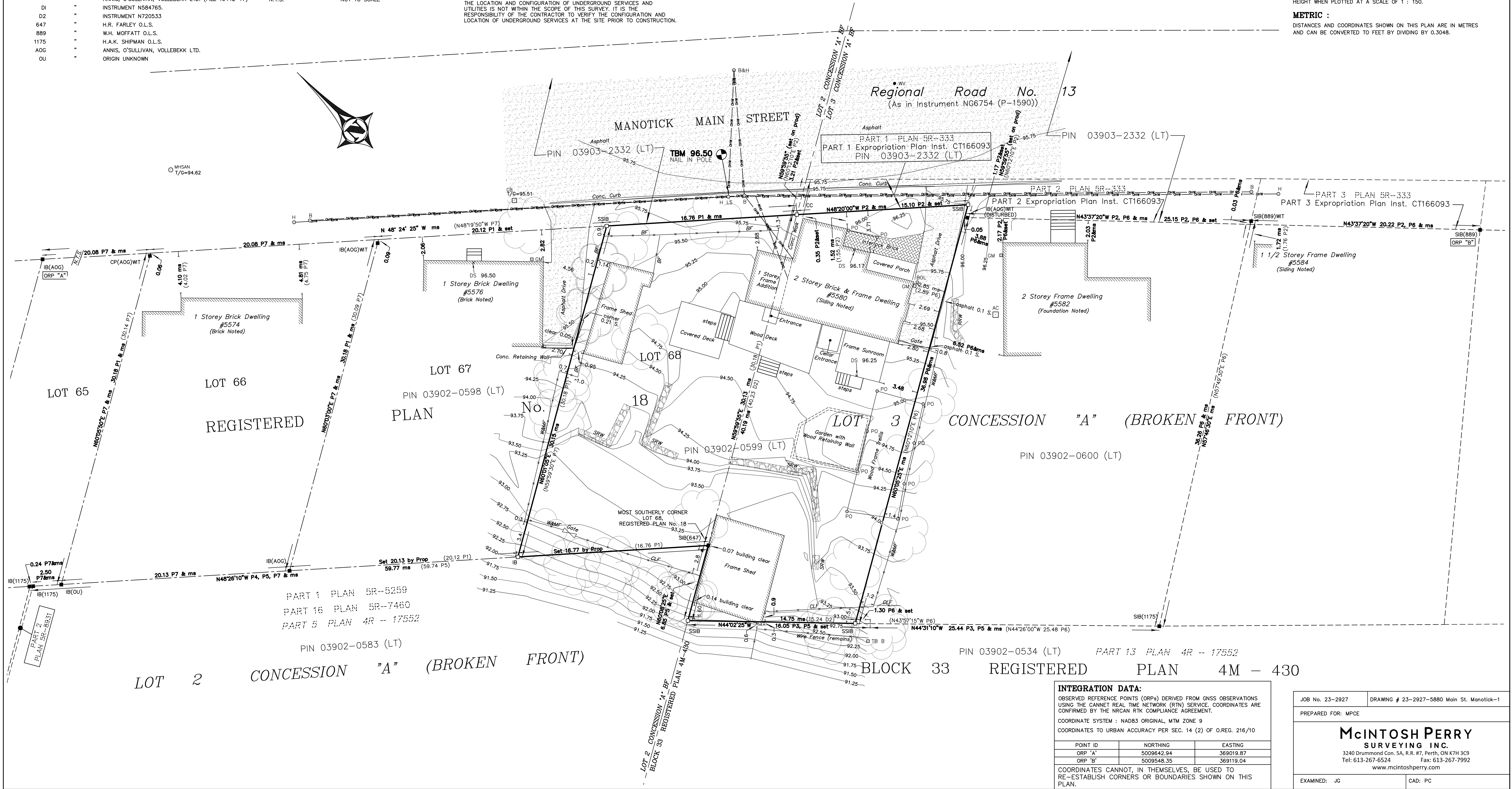
McINTOSH PERRY SURVEYING INC.

SCALE 1 : 150

0 2.5 5.0 7.5 10.0 12.5 15.0 Metres  
THE INTENDED PLOT SIZE OF THIS PLAN IS 914mm IN WIDTH BY 609mm IN HEIGHT WHEN PLOTTED AT A SCALE OF 1 : 150.

METRIC :

DISTANCES AND COORDINATES SHOWN ON THIS PLAN ARE IN METRES AND CAN BE CONVERTED TO FEET BY DIVIDING BY 0.3048.



INTEGRATION DATA:

OBSERVED REFERENCE POINTS (ORP) DERIVED FROM GNSS OBSERVATIONS USING THE CANNET REAL TIME NETWORK (RTN) SERVICE. COORDINATES ARE CONFIRMED BY THE NRCAN RTK COMPLIANCE AGREEMENT.

COORDINATE SYSTEM : NAD83 ORIGINAL, MTM ZONE 9  
COORDINATES TO URBAN ACCURACY PER SEC. 14 (2) OF O.REG. 216/10

POINT ID	NORTHING	EASTING
ORP 'A'	5009642.94	369019.87
ORP 'B'	5009548.35	369119.04

COORDINATES CANNOT, IN THEMSELVES, BE USED TO RE-ESTABLISH CORNERS OR BOUNDARIES SHOWN ON THIS PLAN.

JOB No. 23-2927	DRAWING # 23-2927-5880 Main St. Manotick-1
PREPARED FOR: MPCE	
<b>McINTOSH PERRY</b> SURVEYING INC. 3240 Drummond Con. 5A, R.R. #7, Perth, ON K7H 3C9 Tel: 613-267-6524 Fax: 613-267-7992 www.mcintoshperry.com	
EXAMINED: JG	CAD: PC