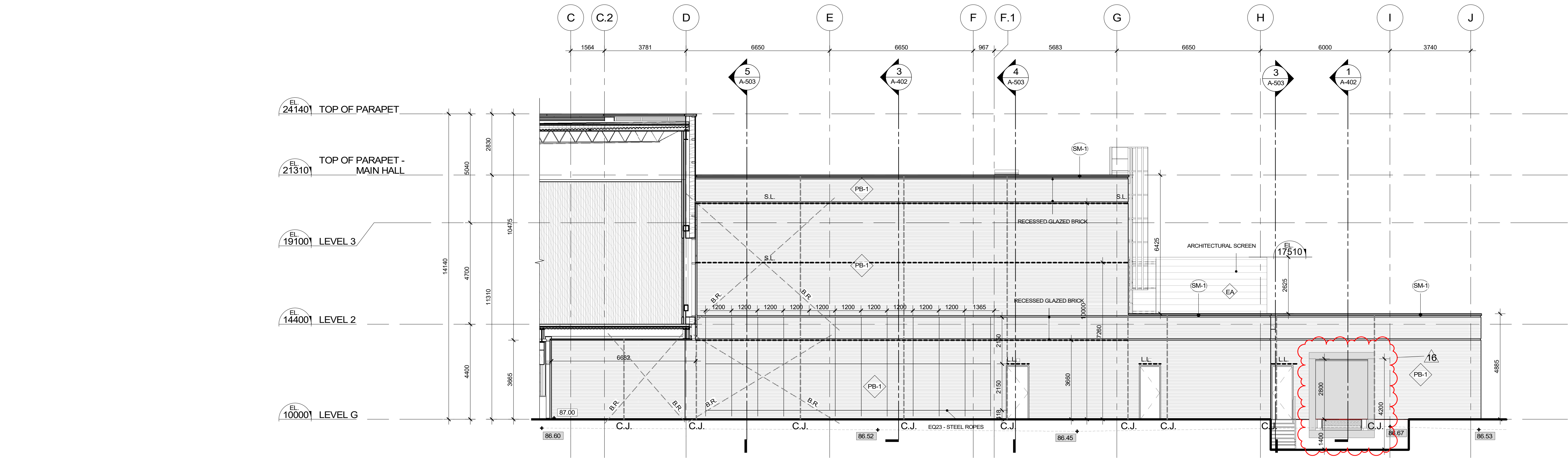


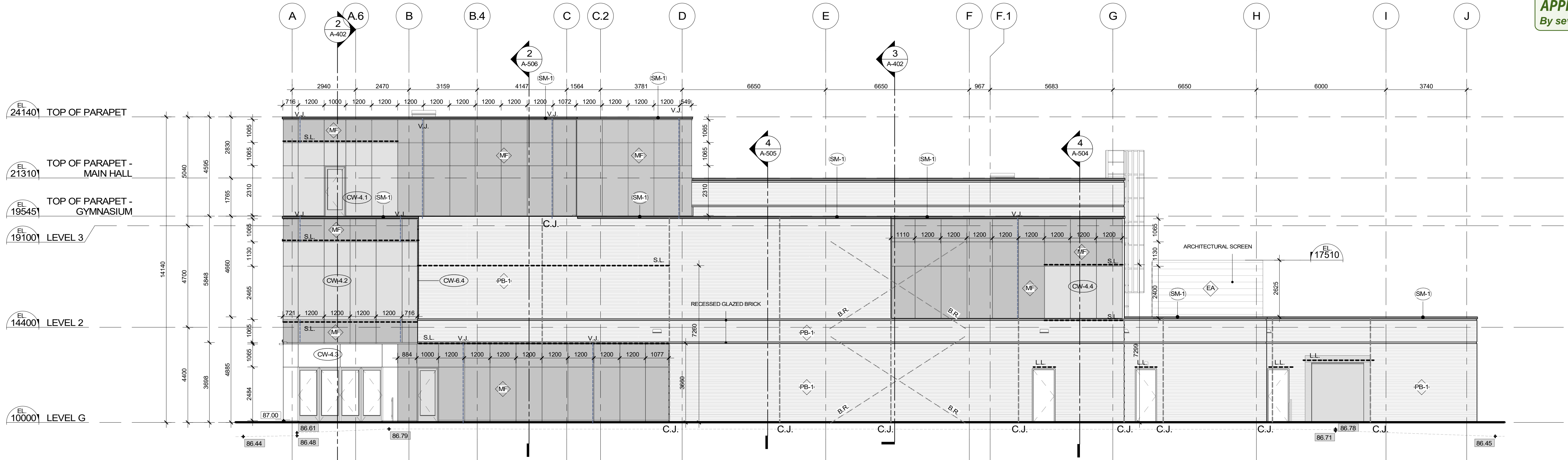
3 WEST ELEVATION - COURTYARD  
A-301 1:100



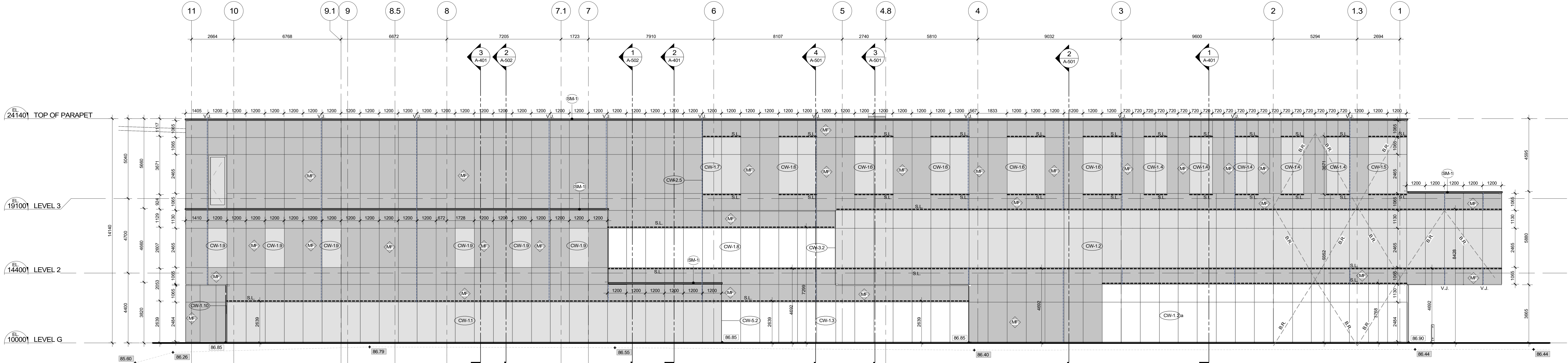
JOHN SEVIGNY C.E.T.  
MANAGER (A), DEVELOPMENT REVIEW EAST  
PLANNING, DEVELOPMENT & BUILDING SERVICES  
DEPARTMENT, CITY OF OTTAWA

APPROVED  
By sevignyjo at 4:18 pm, Aug 13, 2025

2 WEST ELEVATION  
A-301 1:100



1 NORTH ELEVATION - CARRIÈRE STREET  
A-301 1:100



Project  
Nouvel édifice du MFO / New MFO facility

**MFO**  
MOUVEMENT D'IMPLICATION  
FRANCOPHONE D'ORLÉANS  
6600 rue Carrière  
Orléans, Ontario K1C 1J4  
Mouvement d'implication francophone d'Orléans

Key plan  
RUE CARRIÈRE / CARRIÈRE ST.

Notes

- Before the work is carried out, the contractor must check the dimensions and conditions of the site and immediately notify the architect of any situations that do not comply with the plans and specifications.
- Never take measurements to scale on the drawings.
- This drawing can be used for construction only and only if it has been "Issued for construction"

16	ISSUED FOR PERMIT R2	2025-07-18
15	ISSUED FOR PERMIT R1	2025-05-15
14	ISSUED FOR CONSTRUCTION	2025-04-10
13	ISSUED FOR PERMIT	2025-03-26
12	ADDENDA A-05	2025-02-25
8	ADDENDA A-01	2025-01-24
7	ISSUED FOR TENDER	2025-01-13
6	ISSUED FOR 100% REVISION 2	2024-12-20
5	Issued for 100% Revision 01	2022-10-28
4	Issued for 100%	2022-09-30
3	Issued for coordination - 99%	2022-09-02
2	ESTIMATION 99%	2022-08-22
1	Issued for coordination - 66%	2022-06-17

Revision Description Date

Seal

Architecture

**PROVENCHER ROY**  
PROVENCHER ROY ASSOCIÉS ARCHITECTES INC.  
47 Rue Clarence, Suite 400  
OTTAWA, ONTARIO, CANADA K1N 9K1  
T 613 886-6339  
T 613 886-6339  
PROVENCHER-CHRY

Consultants

Structural

**LEROUX + CYR**  
LEROUX + CYR  
1301 boul. Henri-Sourasse Est  
MONTREAL, QUEBEC, CANADA, H3L 1B7  
T 438.361.7773  
Mechanical - Electrical - Plumbing

**bouthillette parizeau**  
Bouthillette Parizeau  
6650 av. de l'Esplanade Bureau 200,  
MONTREAL, QUEBEC, CANADA H2P 2P8  
T 514 383.3747  
Civil

**Jp2g Consultants Inc.**  
ENGINEERS - PLANNERS - PROJECT MANAGERS  
Jp2g Consultants Inc.  
1150 Morrison Drive, Suite 410  
Ottawa, Ontario, K2H 6S9  
T 613 828.7800 C 613 220.6454  
Landscape

**Vlan**  
Vlan paysages  
24, Avenue Mont-Royal O. Bureau 901  
Montréal, Québec, Canada, H2T 2S2  
T 514 572.9107  
Theatre consultants

**TRIZART ALIANCE**  
Trizart alliance  
5524 rue Saint-Patrick, Bureau 505  
Montréal, Québec, Canada, H4E 1A8  
T 514 543.7473

Drawing

**ELEVATIONS - NORTH & WEST**

Scale  
1: 100  
Date  
2025-07-18  
Project number  
210462

Drawn by  
JGR  
Approved by  
JLA  
Drawing number  
A-301

Revision  
16

# ELEVATIONS LEGEND

GENERAL NOTES:

1. ALL BRICK VENEER IS TYPE PB-1 UNLESS OTHERWISE SPECIFIED.



TAG OF EXTERIOR WALL FINISHES



BRICK CLADDING : MANGANESE IRONSPOT, SMOOTH, NORMAN SIZE BY ENDICOTT WITH MORTAR, BLACK JOINT BY BETOMIX PLUX



ARCHITECTURAL ALUMINUM SCREEN **EQ5**, COLOR SIMILAR TO ALUPROTECK'S CLEAR ANODIZED ALUMINUM #310/318 (SEE ARCHITECTURAL SPECIFICATIONS)



PHOTOVOLTAÏC PANELS - SOLID BLACK FACING - MONO MODULE BY MITREX - OR APPROVED EQUIVALENT IN COORDINATION WITH MULTIFAÇADE SYSTEM,



MULTIFAÇADE SYSTEM - GREY GLASS SIDING



PRE-PAINTED STEEL FLASHING ; METALLIC FINISH PAINT, COLOR SIMILAR TO ALUPROTECK CLEAR ANODIZED ALUMINUM #310/318



FREE LINTELS



LINTEL - STRUCTURAL, (SEE STRUCTURAL DOCUMENTS).



MASONRY CONTROL JOINT.



HORIZONTAL JOINTS. MF SYTEM



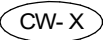
VERTICAL JOINT.MF SYTEM



BRACING, (SEE STRUCTURAL DOCUMENTS).

F-X

WINDOW TYPE 1, 2, ETC.



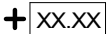
CURTAIN WALL TYPE 1, 2, ETC.



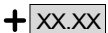
OUTDOOR WALL LIGHTING FIXTURE.



WATER INLET, SEE MECHANICAL



NEW GRADE



EXISTING GRADE



EXISTING TOPOGRAPHY PROFILE