

SURVEYOR
ANNIS O'SULLIVAN VOLLEBEKK LTD.
14 CONCOURSE GATE, SUITE 500
OTTAWA, ON, K2E 7S6

Implement the following protection measures for retained trees, both on site and on adjacent sites, prior to any work activity, including tree removal. Maintain tree protection fence in place and in good condition for the duration of site works:

1. The Landscape Architect or Certified Arborist is to determine the location of the tree protection fencing and detail it on any associated plans for the site (e.g. tree conservation report, site closure report, etc.).
2. Under the guidance of a Landscape Architect or Certified Arborist, erect a fence at the critical root zone (CRZ) of trees Diameter at breast height (DBH) is the trunk diameter measured at 1.3m height on the tree trunk. The CRZ is calculated as DBH x 10. Refer to the Tree Protection Fence design.
3. Refer to the Tree Protection Plan for fence location. City Forestry Staff are to approve both the plan and the installed fence prior to work commencement.
4. Do not place any material or equipment within 2m of the CRZ of any tree, including outhouses.
5. When erecting any signs, erect them as posters to any tree.
6. Do not disturb, raise, or lower the existing grade within the CRZ without approval.
7. Only tunnel or bore when digging within the CRZ of a tree. Hand work only where required within the CRZ, absolutely no machinery permitted.
8. Do not damage the root system, trunk, or branches, or any tree.
9. Do not extend hard surface or significantly change landscape.
10. Ensure that exhaust fumes from all equipment are directed away from any tree canopy.
11. Where there is a proposed overlap with the CRZ of trees marked for preservation: cut at the edge of the CRZ and grind down stumps after tree removals, do not pull out stumps. Ensure there is not root pulling or disturbance of the ground within the CRZ.
12. Prior to work taking place, notify and consult the Landscape Architect and City Forestry Staff if roots must be cut. Roots 20mm or larger should be cut at right angles with clean, sharp horticultural tools without tearing, crushing, or pulling. Refer to City of Ottawa Specification S.P. F-8011 Tree Protection, Excavation of Root Zone.
13. If damaged or objectionable roots are observed, consult the Landscape Architect, before any work is conducted. Do not prune leaders. Do not prune more than 1/4 of crown.
14. Set up a water and fertilizing program, if trees are being affected by site works, to the satisfaction of the Landscape Architect.
15. The Landscape Architect is to prescribe mitigation measures if the protected fenced area must be reduced to facilitate construction. Measures may include the placement of plywood, wood chips, or steel plating over the roots for protection. City Forestry Staff are to approve said measures prior to fence movement.
16. The City of Ottawa Bylaw 51 protects municipal trees and municipal natural areas in the City of Ottawa and trees on private property in the urban area of the City of Ottawa (2020-30-30).

NOTE: EXISTING TREES (8, 9 AND 10) ARE OUTSIDE THE PROPERTY LINE. TREE LOCATIONS ARE SCHEMATIC ONLY.

No.	Botanical Name	Common Name	DBH (cm)	CRZ (m)	Condition	Owner	Remarks	Recomm.
1	<i>Acer platanoides</i>	Norway Maple	23.0	2.30	F	Client	Conflict	Remove
2	<i>Acer platanoides</i>	Norway Maple	25.0	2.50	F	Client	Conflict	Remove
3	<i>Acer negundo</i>	Manitoba Maple	20.0	2.00	F	Client	Conflict	Remove
4	<i>Acer negundo</i>	Manitoba Maple	25.0	2.50	F	Client	Conflict	Remove
5	<i>Acer negundo</i>	Manitoba Maple	25.0	2.50	F	Client	Conflict	Remove
6	<i>Syringe vulgaris</i>	Common Lilac	21.0	2.10	P	Client	Conflict - 6 stems - 7cm ea. Dead wood evident, low vigor, suffering lack of light, leaning	Remove
7	<i>Picea glauca</i>	White Spruce	20.0	2.00	F	Client	Conflict	Remove
8	<i>Tilia americana</i>	Basswood	20.0	2.00	VP	Neighbour	Presence of insects and disease; swollen areas on trunk; leader gone, decay evident in a number of places	Remove
9	<i>Pinus strobus</i>	White Pine	10.0	1.00	G	Neighbour		PROTECT
10	<i>Picea glauca</i>	White Spruce	20.0	2.00	G	Neighbour	Conflict	Remove

Legend				
G	Good	Conflict	Remove due to conflict with construction.	
F	Fair	Remove	Remove due to tree helath or invasive status.	
P	Poor	PROTECT	Protect trees as per contract details and specifications.	

Telephone (613) 254-9643
Facsimile (613) 254-5867
Website www.novatech-eng.com

DRAWING NAME

TREE CONSERVATION PLAN 1

EXISTING CONDITION & TREE COVER

PROJECT No. _____

122186-00

REV

REV # 7

122486 TCD1

LANA1.DWG - 841mmx594mm

#19043

NOTE: THE POSITION OF ALL POLE LINES, CONDUITS, WATERMAINS, SEWERS AND OTHER UNDERGROUND AND OVERGROUND UTILITIES AND STRUCTURES IS NOT NECESSARILY SHOWN ON THE CONTRACT DRAWINGS, AND WHERE SHOWN, THE ACCURACY OF THE POSITION OF SUCH UTILITIES AND STRUCTURES IS NOT GUARANTEED. BEFORE STARTING WORK, DETERMINE THE EXACT LOCATION OF ALL SUCH UTILITIES AND STRUCTURES AND ASSUME ALL LIABILITY FOR DAMAGE TO THEM.

Owner:
17916 ONT INC.
MERIVALE ROAD
Iowa, ON K2G 1G9

NOT FOR
CONSTRUCTION


7.	RE-ISSUED FOR SPC	JUL 22/25	RGJ
6.	RE-ISSUED FOR SPC	MAY 5/25	RGJ
5.	RE-ISSUED FOR SPC	OCT 11/24	RGJ
4.	RE-ISSUED FOR SPC	SEPT 6/24	RGJ
3.	RE-ISSUED FOR SPC	AUG 20/24	RGJ
2.	RE-ISSUED FOR SPC	JUN 26/24	RGJ
1.	ISSUED FOR SPC	JUN 13/23	RGJ
No.	REVISION	DATE	BY

SCALE

1:150

1:150

4 6



DESIGN

CHECKED

DRAWN

CHECKED

APPROVED

FOR REVIEW ONLY



Telephone (613) 254-9643
Facsimile (613) 254-5867
Website www.novatech-eng.com

DRAWING NAME

TREE CONSERVATION PLAN 1

EXISTING CONDITION & TREE COVER

PROJECT No. _____

122186.00

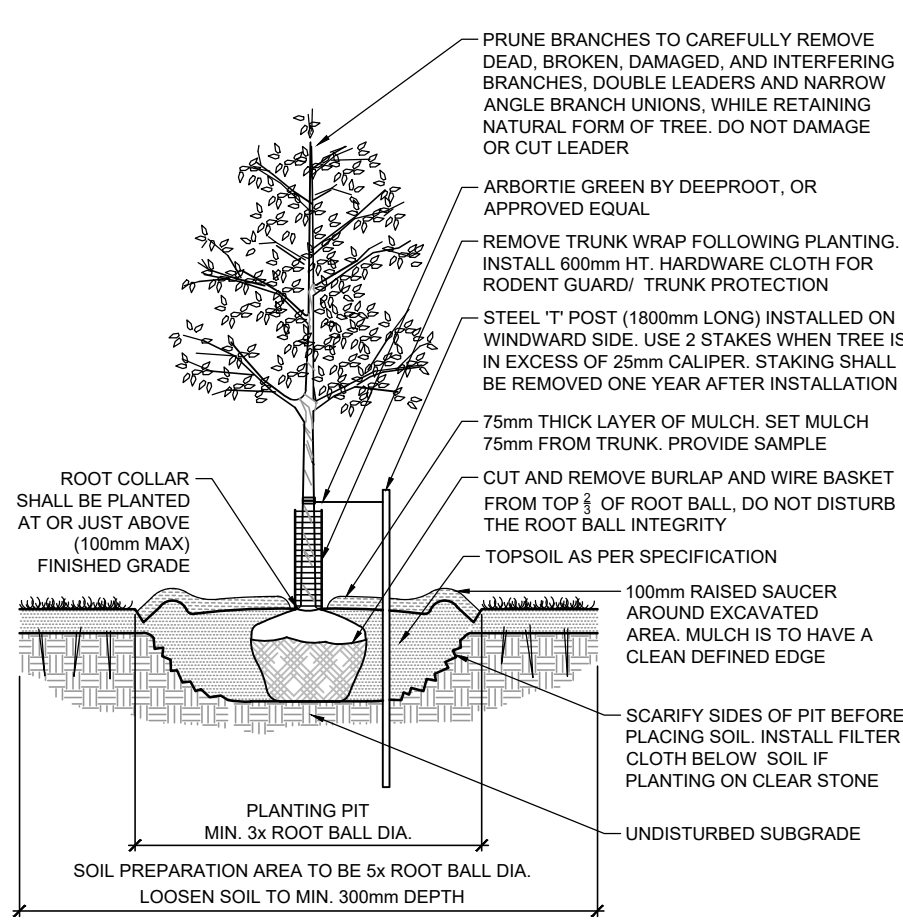
REV

REV # 7

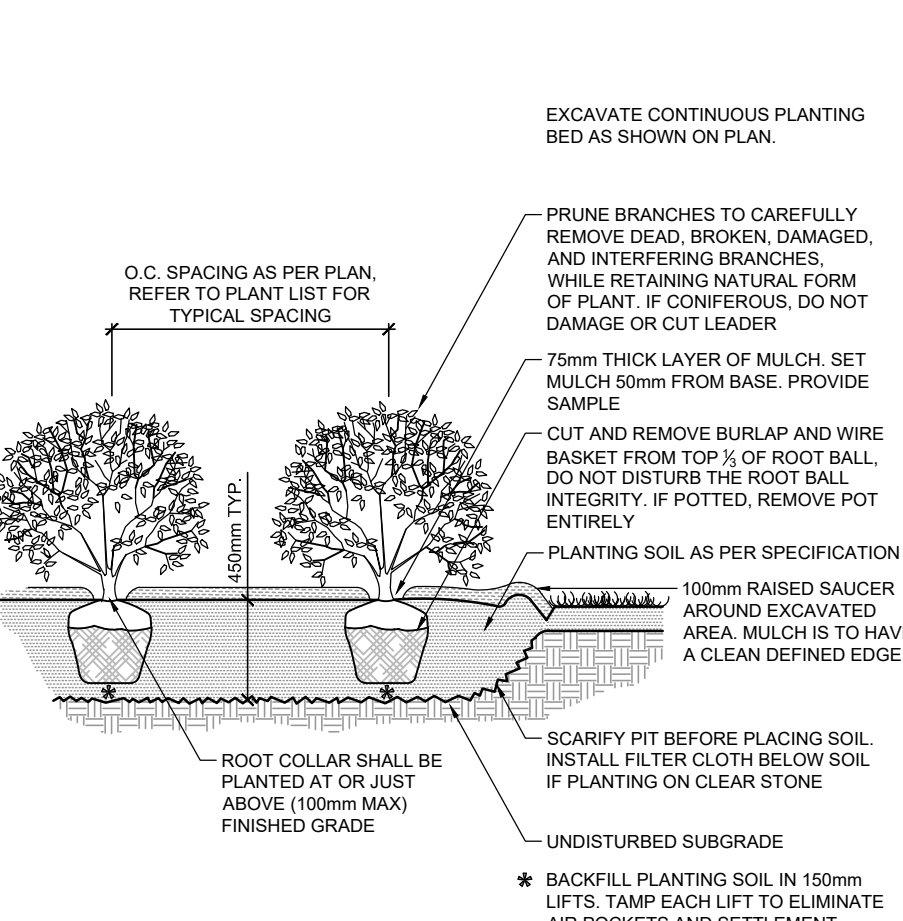
122486 TCD1

LANA1.DWG - 841mmx594mm

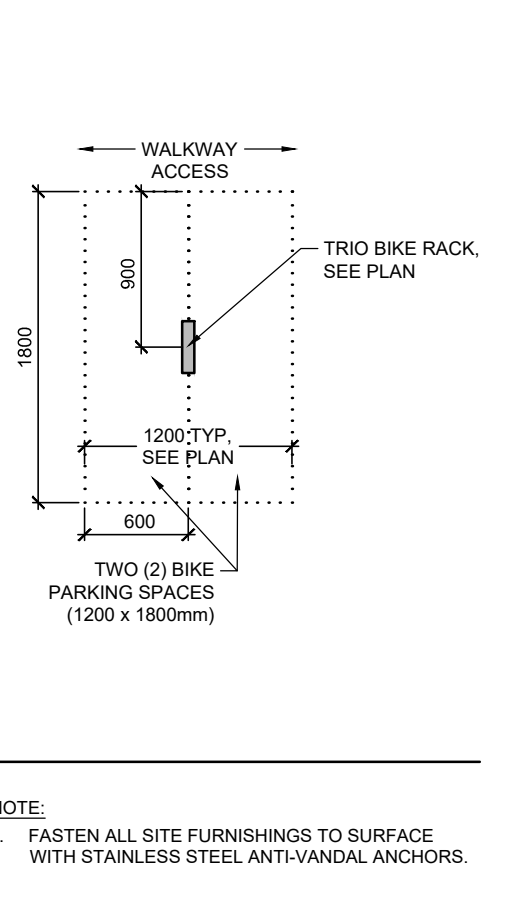
#19043



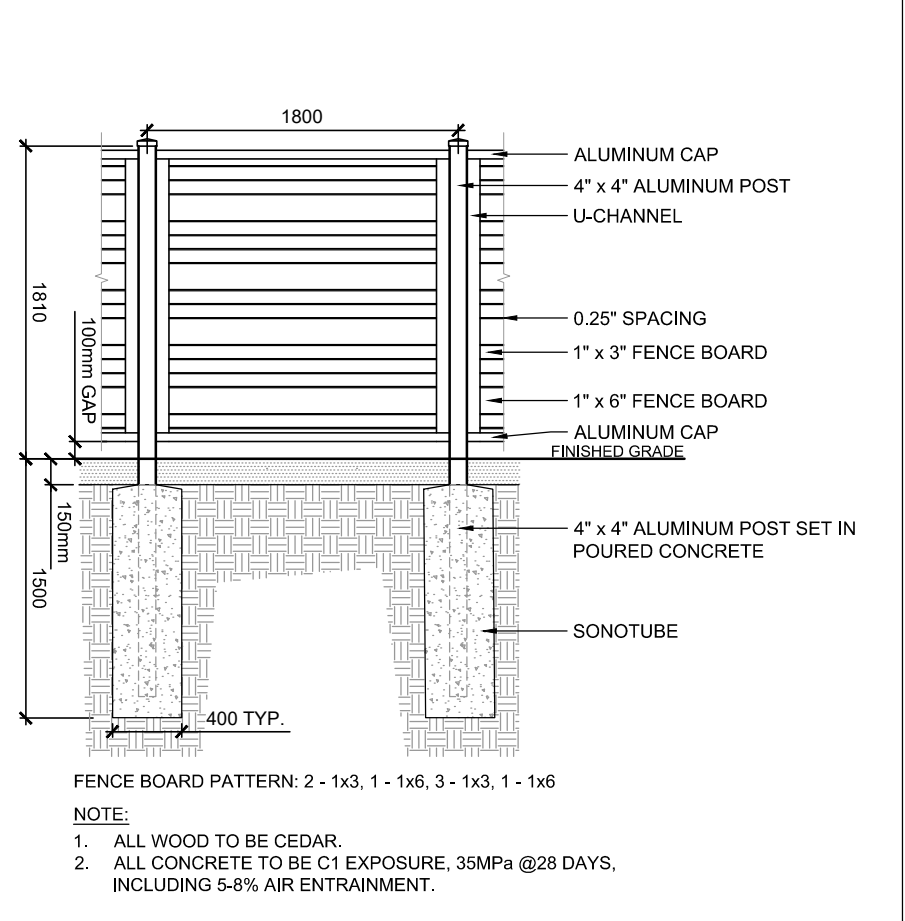
STANDARD DECIDUOUS TREE PLANTING D2



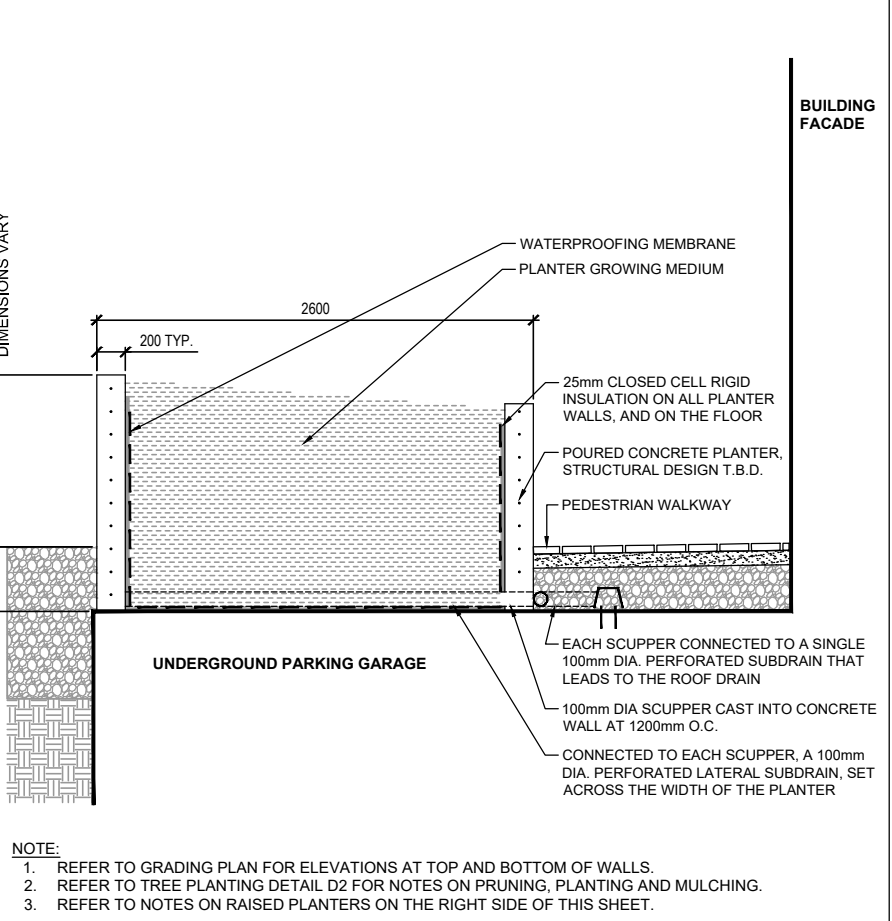
SHRUB AND PERENNIAL PLANTING D3



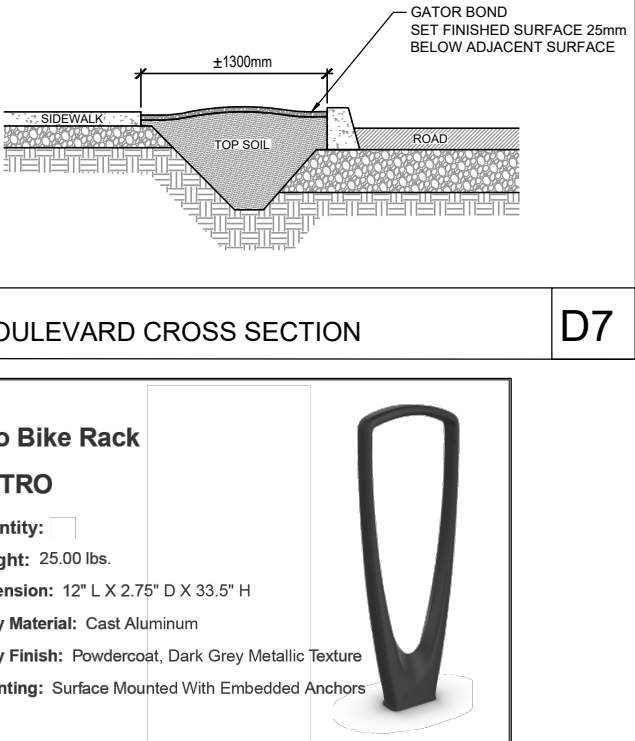
BIKE LAYOUT D4



HORIZONTAL WOOD SCREEN FENCE D5



POURED CONCRETE PLANTER - NORTHWEST CORNER D6



LEGEND

- PROPOSED DECIDUOUS TREE
- PROPOSED SHRUBS
- PROPOSED GRASSES/PERENNIALS
- SPECIES (SEE PLANT LIST)
- QUANTITY
- PROPOSED PAVERS
- CONCRETE WALKWAY
- RIVERSTONE MULCH with Gator Rock Bond over geotextile
- WOOD PRIVACY FENCE 2.0m HT

PRODUCT INFORMATION

Install products as per manufacturer specifications. Shop drawings required.

PLANTER WALLS

- Tandem Wall Next by Techo-Bloc
- Location: Springfield Rd. & Douglas Ave.

PAVERS

Edge of pavers to receive edge restraint.

- Blu 60 by Techo-Bloc

FENCE

- Horizontal Wood Privacy Fence
- Panel Height: 2m
- Post Cap: TBD
- Colour: TBD

SITE FURNITURE

Fasten all site furnishing to surface with stainless steel anti-vandal anchors.

- Trio Bike Rack by Forms + Surfaces
- Powdercoat Colour: Dark Grey Metallic Texture
- Sealing - Rough & Ready Cube by Streetlife
- 1000 x 1000mm, galvanized steel and Douglas Fir.

GEOTEXTILE

- Terrafix 270R or Approved Equivalent
- Location: Beechwood Ave.

RIVERSTONE MULCH STABILIZER

- Gator Rock Bond and Binder Kit by Alliance
- Location: Beechwood Ave.
- Install per manufacturer's specifications, ensuring finished surface is below adjacent hardscape.

SOIL CELLS

- GreenBlue Urban

CANOPY COVER CALCULATIONS

1. REFER TO SHEET 122186-TCR2.

EASEMENTS

1. REFER TO SHEET 122186-TCR1.

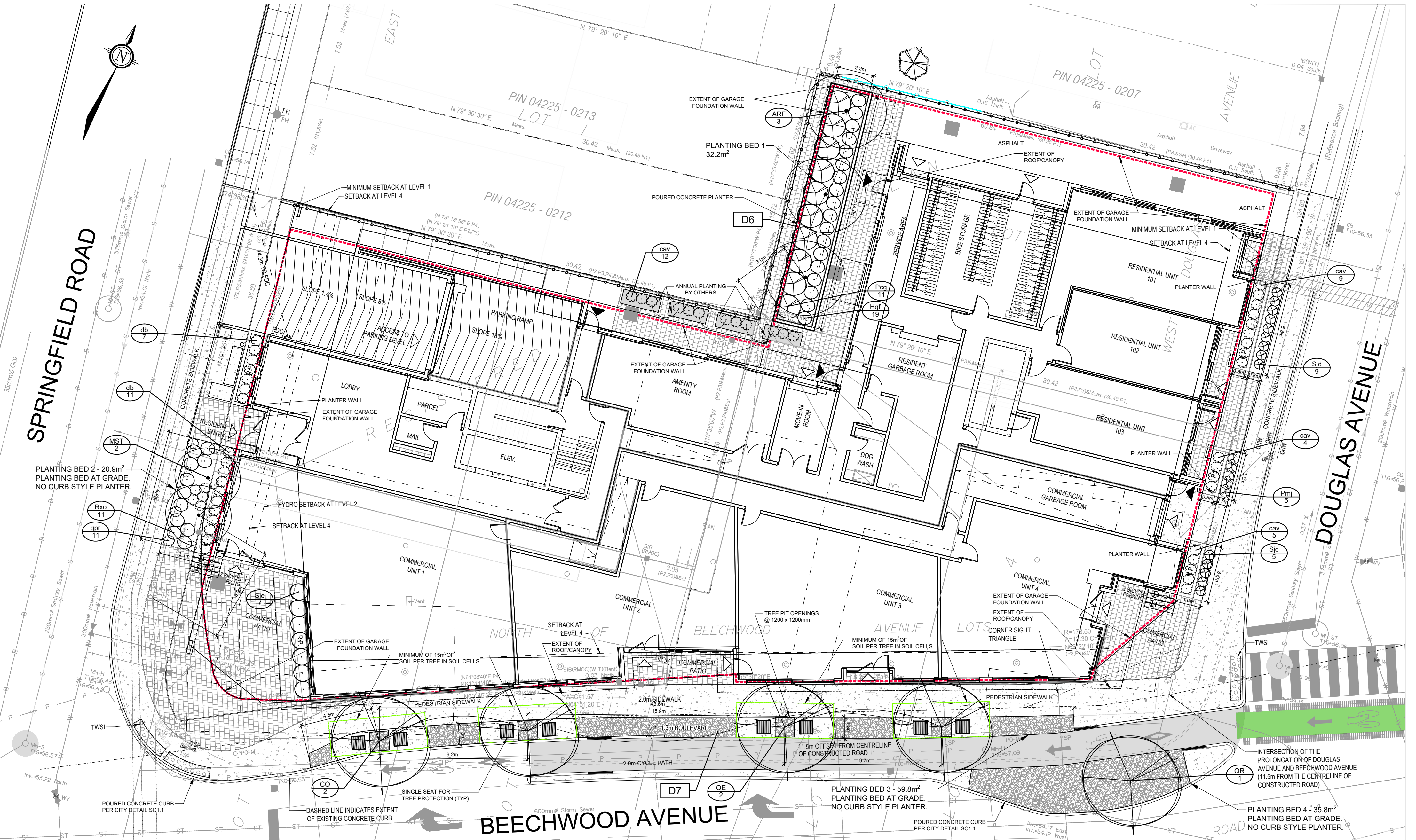
SOIL CALCULATIONS:

Planting Bed No.	Available Soil Area (sq m)	Available Soil Depth (m)	Available Soil Volume (cu m)	No. of Proposed Trees				Total No. of trees	Min. required Soil Volume total (cu m)
				Small 20m ² or 12m ²	Medium 25m ² or 15m ²	Large 30m ² or 18m ²	Evergreen 25m ² or 15m ²		
Planting Bed 1	32.20	1.50	48.30	0	3	0	0	3	45m ³
Planting Bed 2	20.90	1.2m	25.08	0	0	0	0	2	24m ³
Planting Bed 3	59.80	0.7 - 1.2m	72.00	0	0	4	0	4	72m ³
Planting Bed 4	35.80	9m	32.20	0	0	1	0	1	30m ³

Notes: For proposed Planting Bed 1 - poured concrete raised planter to provide adequate soil volume to support 3 medium trees.
For proposed Planting Bed 3 - soil cells to be employed to provide at least 72m³ of continuous soil volume.

PLANT LIST

KEY	QTY	BOTANICAL NAME	COMMON NAME	OWNERSHIP	COMMENT	SIZE	COND	SPACING
Deciduous Trees								
ARF	3	<i>Acer rubrum</i> 'Autumn Flame'	Autumn Flame Red Maple	Private	Native Cultivar	50mm Cal	WB	As Shown
CEL	2	<i>Celtis occidentalis</i>	Hackberry	City	Native	50mm Cal	WB	As Shown
MST	2	<i>Malus</i> 'Sugar Tyne'	Sugar Tyne Crabapple	City	Non-Native	50mm Cal	WB	As Shown
QE	2	<i>Quercus alba</i>	Northern Pin Oak	City	Native	50mm Cal	WB	As Shown
QR	1	<i>Quercus rubra</i>	Red Oak	City	Native	50mm Cal	WB	As Shown
Coniferous Shrubs								
Pmj	5	<i>Pinus mugo</i> 'Jakobsen'	Jakobsen Mugo Pine	City		40cm Spr	BB	As Shown
Deciduous Shrubs								
Hdt	19	<i>Hydrangea paniculata</i> 'Tiny Quick Fire' (SMWHP8)	Tiny Quick Fire Hydrangea	Private		40cm Ht	PT	As Shown
Pcg	11	<i>Physocarpus opulifolius</i> 'Centre Glow'	Centre Glow Ninebark	Private		60cm Ht	PT	As Shown
Rxo	11	<i>Rosa x 'Italian Ice'</i>	Oso Easy Italian Ice Rose	City		50cm Ht	PT	As Shown
Sjd	14	<i>Spiraea japonica</i> 'Double Play Candy Corn'	Double Play Candy Corn Spirea	City		50cm Ht	PT	As Shown
Sic	7	<i>Stephanandra incisa</i> 'Crispa'	Cutleaf Stephanandra	Private		40cm Ht	PT	As Shown
Perennials								
gr	11	<i>Geranium 'Rozanne'</i>	Rozanne Cranesbill	City		1g	PT	As Shown
Ornamental Grasses								
cav	30	<i>Calamagrostis acutiflora</i> 'Avalanche'	Avalanche Feather Reed Grass	Private		1g	PT	As Shown
db	18	<i>Deschampsia cespitosa</i> 'Bronzschleier'	Bronze Veil Tufted Hair Grass	Private		1g	PT	As Shown



NOTE: THE POSITION OF ALL POLE LINES, CONDUITS, WATERMAINS, SEWERS AND OTHER UNDERGROUND AND OVERGROUND UTILITIES AND STRUCTURES IS NOT NECESSARILY SHOWN ON THE CONTRACT DRAWINGS, AND WHERE SHOWN, THE ACCURACY OF THE POSITION OF SUCH UTILITIES AND STRUCTURES IS NOT GUARANTEED. BEFORE STARTING WORK, DETERMINE THE EXACT LOCATION OF ALL SUCH UTILITIES AND STRUCTURES AND ASSUME ALL LIABILITY FOR DAMAGE TO THEM.

OWNER 2317916 ONT INC. 2081 MERIVALE ROAD OTTAWA, ON, K2G 1G9	PLANNER NOVATECH 240 MICHAEL COWPLAND DRIVE, STE. 200 OTTAWA, ON, K2M 1P6	CIVIL ENGINEER STANTEC 390 - 1331 CLYDE AVENUE OTTAWA, ON, K2C 3G4
ARCHITECT PROJECT 1 STUDIO 260 ST. PATRICK STREET, STE. 300 OTTAWA, ON, K1N 5K5	LANDSCAPE ARCHITECT NOVATECH 240 MICHAEL COWPLAND DRIVE, STE. 200 OTTAWA, ON, K2M 1P6	SURVEYOR ANNIS O'SULLIVAN VOLLEBEKK LTD. 14 CONCOURSE GATE, STE. 500 OTTAWA, ON, K2E 7S6

7.	RE-ISSUED FOR SPC	JUL 22/25	RGJ
6.	RE-ISSUED FOR SPC	MAY 5/25	RGJ
5.	RE-ISSUED FOR SPC	OCT 11/24	RGJ
4.	RE-ISSUED FOR SPC	SEPT 6/24	RGJ
3.	RE-ISSUED FOR SPC	AUG 20/24	RGJ
2.	RE-ISSUED FOR SPC	JUN 26/24	RGJ
1.	ISSUED FOR SPC	JUN 13/23	RGJ
No.	REVISION	DATE	BY

SCALE

1:150

0 2 4 6

DESIGN

MEL

CHECKED

RGJ

DRAWN

MEL

CHECKED

RGJ

APPROVED

RGJ

FOR REVIEW ONLY

ASSOCIATION OF LANDSCAPE ARCHITECTS

OTAWA

MEMBER

JUL 22/25

NOVATECH

Engineers, Planners & Landscape Architects

Suite 200, 240 Michael Cowpland Drive
Ottawa, Ontario, Canada K2M 1P6

Telephone (613) 254-9643
Facsimile (613) 254-5867
Website www.novatech-eng.com

LOCATION
CITY OF OTTAWA
47 BEECHWOOD AVENUE

DRAWING NAME
LANDSCAPE PLAN

**PART OF LOTS 1, 2, 3 & 4 (NORTH BEECHWOOD AVE.)
LOT 1 AND PART OF LOT 2 (WEST DOUGLAS AVE.)
REGISTERED PLAN 74
CITY OF OTTAWA**

PROJECT NO.
122186-00

REV
REV # 7

DRAWING NO.
122186-LP1