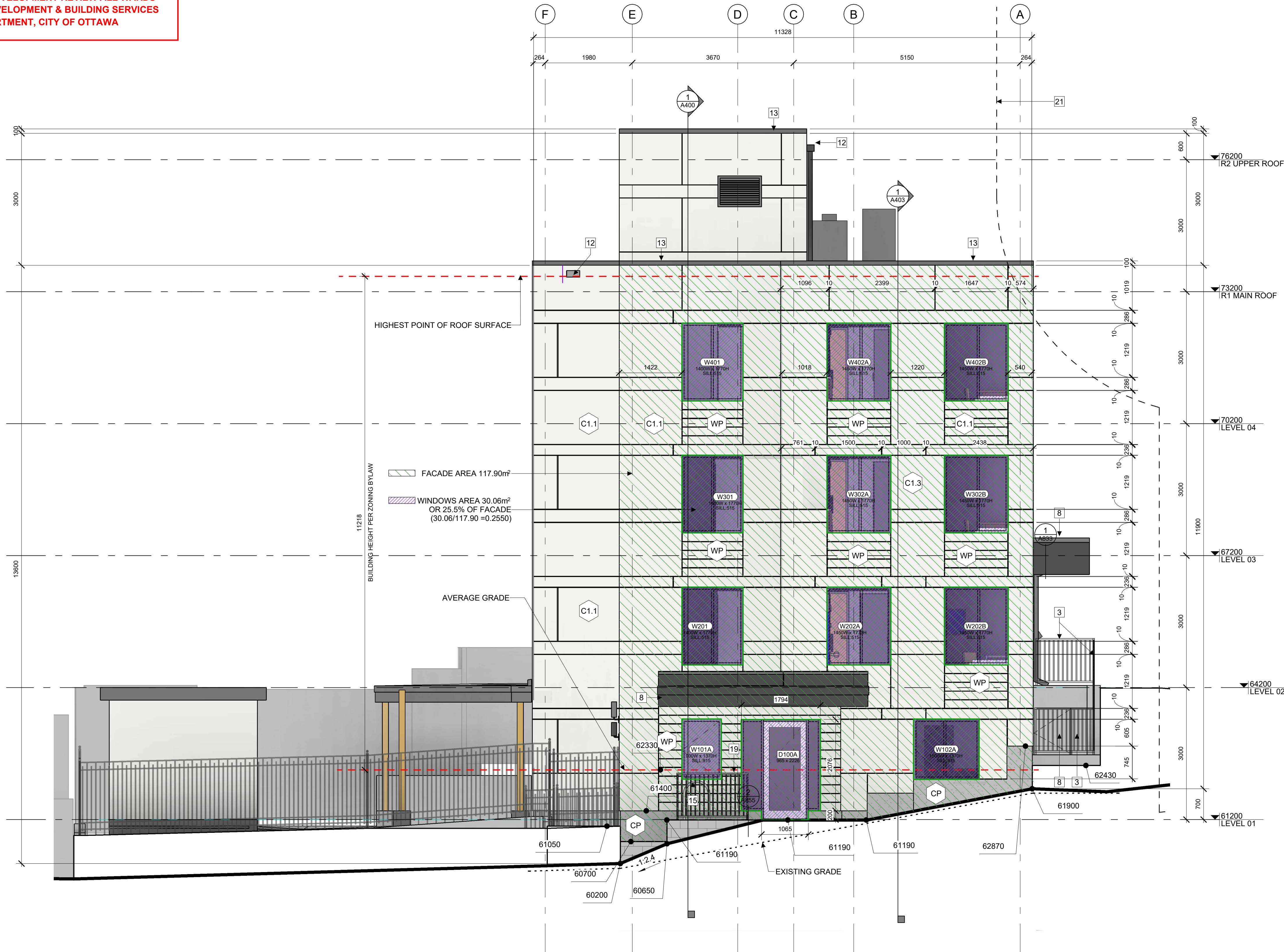


ALLISON HAMLIN
MANAGER , DEVELOPMENT REVIEW ALL WARDS
PLANNING, DEVELOPMENT & BUILDING SERVICES
DEPARTMENT, CITY OF OTTAWA

APPROVED
By Allison Hamlin at 3:22 pm, Jul 31, 2025



1 EAST ELEVATION
A302 | 1:50

ELEVATION NOTES:

A. CONTRACTOR TO COORDINATE WITH MANUFACTURER'S SPECIFICATIONS AND INSTALLATIONS GUIDELINES FOR ALL MATERIAL SEALING, TRANSITIONS, SEPARATIONS, FLASHING DETAILS, CONNECTIONS, ANCHORAGES, ETC. CONTRACTOR TO PROVIDE DETAIL DRAWINGS OR MOCK-UP FOR ARCHITECT'S REVIEW AND APPROVAL FOR ALL SPECIAL CONDITIONS NOT SHOWN IN THE CONTRACT DOCUMENTS.

ELEVATION KEYNOTES:

- 1 LIGHT WELL
- 2 MECHANICAL LOUVRE
- 3 1070 HIGH GLASS GUARD
- 4 SHADE STRUCTURE
- 5 PREFINISHED METAL CAP FLASHING
- 6 ROOFTOP UNIT
- 7 EXISTING RETAINING WALL TO REMAIN
- 8 ENTRANCE CANOPY
- 9 NEW RETAINING WALL
- 10 FENCING
- 11 CURTAIN WALL
- 12 ROOF OVERFLOW SCUPPER
- 13 PARAPET CAP C/W NON-CORROSIVE PRE-FINISHED METAL FLASHING (PAINTED)
- 14 COLUMN PER STRUCTURAL (PAINTED)
- 15 GALVANIZED STEEL BIKE RACKS SURFACE MOUNTED
- 16 GAS METER PER MECHANICAL
- 17 GALVANIZED STEEL GUTTER ALONG EDGE OF CANOPY SLOPPED TOWARD DOWNSPOUTS. PAINTED
- 18 GALVANIZED STEEL DOWNSPOUT, PAINTED
- 19 1070mm GUARD PER LANDSCAPING
- 20 GATE C/W LATCH IN GLASS GUARD
- 21 REQUIRED SETBACK FROM HYDRO LINES

ELEVATION LEGEND:

HATCH PATTERNS SHOWN ARE FOR GRAPHIC PURPOSES ONLY AND SHOULD BE COORDINATED WITH ACTUAL SPECIFIED MATERIALS.

HATCH	SYMBOL	DESCRIPTION
	C1.1	FIBRECEMENT CLADDING MANUFACTURER: CEMFORT COLOUR: CHANTILLY LACE - BM OC-65
	WP	WOOD VENER PHENOLIC CLADDING MANUFACTURER: PARKLEX PRODEMA COLOUR: MUSTARD - NATURCLAD-B SIZE : 188 MM SIDING
	CP	FOUNDATION WALL FINISH TBD
		REQUIRED HYDRO CLEARANCE
		EXISTING GRADE. SHOWN APPROXIMATELY BASED ON SURVEY INTERPOLATION.

AVERAGE GRADE LEVEL CALCULATION

ELEVATION	FACE AREA	LENGTH
NORTH	109.94m²	27.286m
EAST	67.61m²	11.400m
SOUTH	175.75m²	27.286m
WEST	23.49m²	11.396m
TOTAL	376.79m²	77.368m

AVERAGE DISTANCE FROM L03 TO GRADE
376.79m² / 77.368m = 4.870m
AVERAGE GRADE ELEVATION 62330
(67200-4870=62330)

CSV ARCHITECTS

sustainable design · conception écologique

613.564.8118
www.csv.ca

190 O'Connor Street, Suite 100
Ottawa, Ontario, K2P 2R3

CIVIL ENGINEER
McIntosh Perry
115 Walgreen Road, RR3, Carp, ON K0A 1L0
613-636-2184
www.mcintoshperry.com

LANDSCAPE ARCHITECT
James B Lennox & Associates
3332 CARLING AVE. OTTAWA,
ONTARIO K2H 5A8
(613) 722-5168

STRUCTURAL ENGINEER
Cunliffe & Associates
200-1550 Carling Ave, Ottawa,
ON
K1Z8S8
613-729-7242

MECHANICAL+ ELECTRICAL
ENGINEER
Chorley + Bisset
250 City Centre Ave, Ottawa,
ON
K1R1C7
613-241-0030

URBAN PLANNING
Fotenn Planning and Designing,
420 O'Connor Street, Ottawa,
ON
K2P 1W4
613-730-5709

STAMP

REV	DATE	ISSUE
15	2025-06-12	ISSUED FOR SPCA
12	2025-05-20	ISSUED FOR SPCA R3
11	2025-03-17	ISSUED FOR 95% OCH REVIEW
9	2025-02-12	ISSUED FOR SPCA R2
8	2025-02-11	ISSUED FOR SPCA R1
7	2025-01-20	ISSUED FOR 60% OCH REVIEW
6	2024-12-23	ISSUED FOR 33% OCH REVIEW
5	2024-12-23	ISSUED FOR SPCA
4	2024-12-20	ISSUED FOR BUILDING PERMIT

NOTES

- OWNERSHIP OF THE COPYRIGHT OF THE DESIGN AND THE WORKS EXECUTED FROM THE DESIGN REMAINS WITH CSV ARCHITECTS, AND MAY NOT BE REPRODUCED IN ANY FORM WITHOUT THE WRITTEN CONSENT OF CSV ARCHITECTS.
- THE DRAWINGS, PRESENTATIONS AND SPECIFICATIONS AS INSTRUMENTS OF SERVICE ARE AND SHALL REMAIN THE PROPERTY OF CSV ARCHITECTS. THEY ARE NOT TO BE USED BY THE CLIENT ON OTHER PROJECTS OR ON EXTENSIONS TO THIS PROJECT WITHOUT THE WRITTEN CONSENT OF CSV ARCHITECTS.
- THIS DRAWING IS TO BE READ IN CONJUNCTION WITH ALL OTHER PROJECT DRAWINGS AND SPECIFICATIONS.
- DO NOT SCALE DRAWINGS. CONTRACTOR SHALL BE RESPONSIBLE TO VERIFY DIMENSIONS ON SITE.
- ALL WORK SHALL BE IN ACCORDANCE WITH THE ONTARIO BUILDING CODE AND ALL SUPPLEMENTS AND APPLICABLE MUNICIPAL REGULATIONS.

CLIENT

OTTAWA COMMUNITY
HOUSING
OTTAWA
ONTARIO, CANADA

PROJECT

OCH SOMERSET ST. E

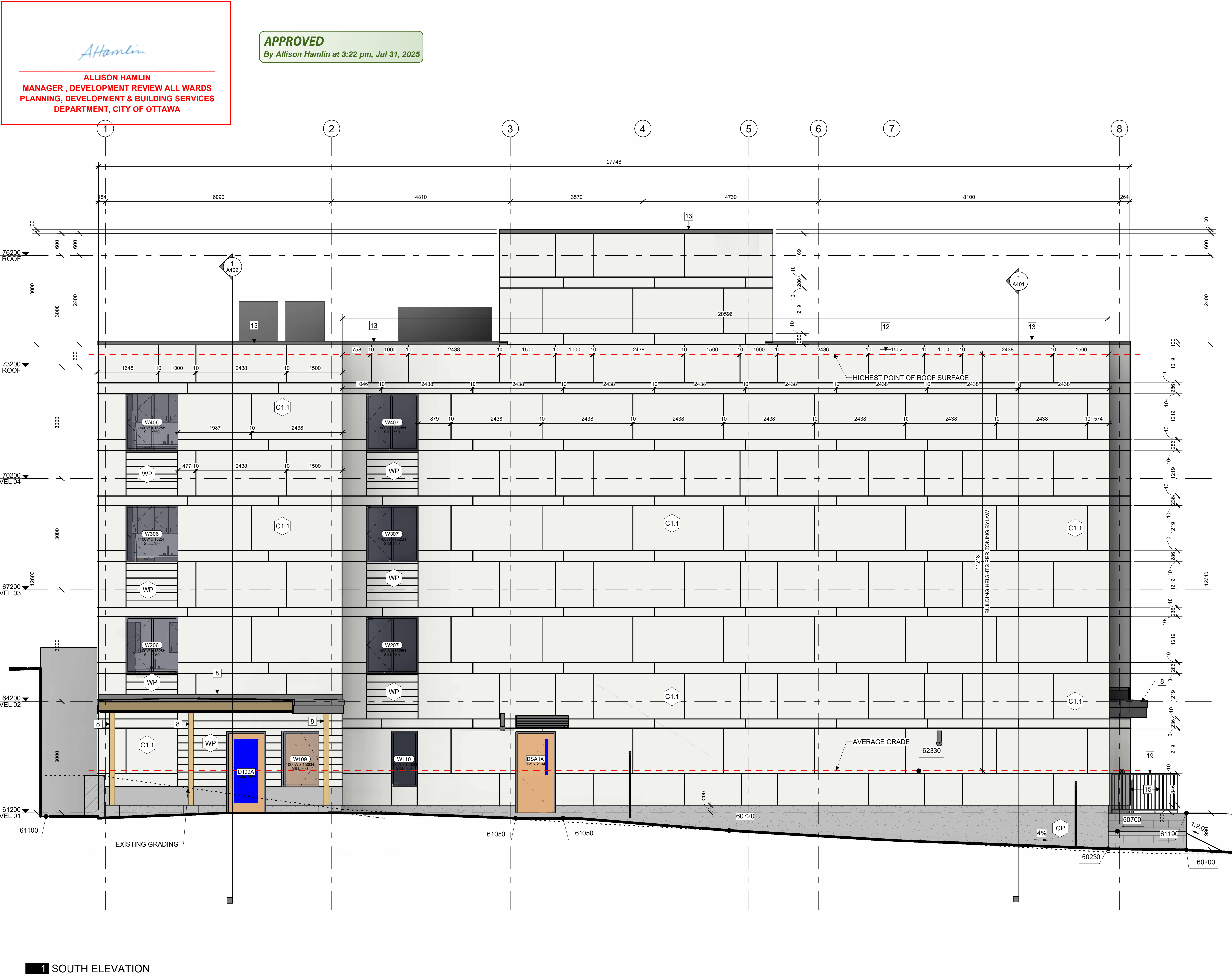
214 SOMERSET ST. E, OTTAWA,
ON.

TITLE

EXTERIOR ELEVATION
EAST

PROJECT NO: 2022 - 2470
DRAWN: HL, IK
APPROVED: AL, JS
SCALE: 1: 50
DATE PRINTED: 6/12/2025 12:27:22 PM

REV DRAWING NO.



1 SOUTH ELEVATION
A303 | 1 : 50

ELEVATION NOTES:

A. CONTRACTOR TO COORDINATE WITH MANUFACTURER'S SPECIFICATIONS AND INSTALLATIONS GUIDELINES FOR ALL MATERIAL SEALING, TRANSITIONS, SEPARATIONS, FLASHING DETAILS, CONNECTIONS, ANCHORAGES, ETC. CONTRACTOR TO PROVIDE DETAIL DRAWINGS OR MOCK-UP FOR ARCHITECT'S REVIEW AND APPROVAL FOR ALL SPECIAL CONDITIONS NOT SHOWN IN THE CONTRACT DOCUMENTS.

ELEVATION KEYNOTES:

- 1 LIGHT WELL
- 2 MECHANICAL LOUVRE
- 3 1070 HIGH GLASS GUARD
- 4 SHADE STRUCTURE
- 5 PREFINISHED METAL CAP FLASHING
- 6 ROOFTOP UNIT
- 7 EXISTING RETAINING WALL TO REMAIN
- 8 ENTRANCE CANOPY
- 9 NEW RETAINING WALL
- 10 FENCING
- 11 CURTAIN WALL
- 12 ROOF OVERFLOW SCUPPER
- 13 PARAPET CAP C/W NON-CORROSIVE PRE-FINISHED METAL FLASHING (PAINTED)
- 14 COLUMN PER STRUCTURAL (PAINTED)
- 15 GALVANIZED STEEL BIKE RACKS SURFACE MOUNTED
- 16 GAS METER PER MECHANICAL
- 17 GALVANIZED STEEL GUTTER ALONG EDGE OF CANOPY SLOPPED TOWARD DOWNSPOUTS. PAINTED
- 18 GALVANIZED STEEL DOWNSPOUT, PAINTED
- 19 1070mm GUARD PER LANDSCAPING
- 20 GATE C/W LATCH IN GLASS GUARD
- 21 REQUIRED SETBACK FROM HYDRO LINES

ELEVATION LEGEND:

HATCH PATTERNS SHOWN ARE FOR GRAPHIC PURPOSES ONLY AND SHOULD BE COORDINATED WITH ACTUAL SPECIFIED MATERIALS.

HATCH	SYMBOL	DESCRIPTION
	C1.1	FIBERCEMENT CLADDING MANUFACTURER: CEMFORT COLOUR: CHANTILLY LACE - BM OC-65
	WP	WOOD VENEER PHENOLIC CLADDING MANUFACTURER: PARKLEX PRODEMA COLOUR: MUSTARD - NATURCLAD-B SIZE : 188 MM SIDING
	CP	FOUNDATION WALL FINISH TBD
		REQUIRED HYDRO CLEARANCE
		EXISTING GRADE. SHOWN APPROXIMATELY BASED ON SURVEY INTERPOLATION.

AVERAGE GRADE LEVEL CALCULATION

ELEVATION	FACE AREA	LENGTH
NORTH	109.94m ²	27.286m
EAST	67.61m ²	11.400m
SOUTH	175.75m ²	27.286m
EAST	23.49m ²	11.396m
TOTAL	376.79m ²	77.368m

AVERAGE DISTANCE FROM L03 TO GRADE
376.79m² / 77.368m = 4.870m
AVERAGE GRADE ELEVATION 62330
(67200-4870=62330)

CSV ARCHITECTS

sustainable design · conception écologique

613.564.8118
www.csv.ca

CIVIL ENGINEER
McIntosh Perry
115 Walgreen Road, RR3, Carp, ON K0A 1L0
613-636-2184
www.mcintoshperry.com

LANDSCAPE ARCHITECT
James B Lennox & Associates
3332 CARLING AVE. OTTAWA,
ONTARIO K2H 5A8
(613) 722-5168

STRUCTURAL ENGINEER
Cunliffe & Associates
200-1550 Carling Ave, Ottawa,
ON
K1Z8S8
613-729-7242

MECHANICAL + ELECTRICAL
ENGINEER
Chorley + Bisset
250 City Centre Ave, Ottawa,
ON
K1R1C7
613-241-0030

URBAN PLANNING
Fotenn Planning and Designing,
420 O'Connor Street, Ottawa,
ON
K2P 1W4
613-730-5709

STAMP

15	2025-06-12	ISSUED FOR SPCA
13	2025-05-23	ISSUED FOR REVIEW
11	2025-03-17	ISSUED FOR 95% OCH REVIEW
8	2025-02-11	ISSUED FOR SPCA R1
7	2025-01-20	ISSUED FOR 60% OCH REVIEW
6	2024-12-23	ISSUED FOR 33% OCH REVIEW
5	2024-12-23	ISSUED FOR SPCA
4	2024-12-20	ISSUED FOR BUILDING PERMIT
REV	DATE	ISSUE

NOTES

- OWNERSHIP OF THE COPYRIGHT OF THE DESIGN AND THE WORKS EXECUTED FROM THE DESIGN REMAINS WITH CSV ARCHITECTS, AND MAY NOT BE REPRODUCED IN ANY FORM WITHOUT THE WRITTEN CONSENT OF CSV ARCHITECTS.
- THE DRAWINGS, PRESENTATIONS AND SPECIFICATIONS AS INSTRUMENTS OF SERVICE ARE AND SHALL REMAIN THE PROPERTY OF CSV ARCHITECTS. THEY ARE NOT TO BE USED BY THE CLIENT ON OTHER PROJECTS OR ON EXTENSIONS TO THIS PROJECT WITHOUT THE WRITTEN CONSENT OF CSV ARCHITECTS.
- THIS DRAWING IS TO BE READ IN CONJUNCTION WITH ALL OTHER PROJECT DRAWINGS AND SPECIFICATIONS.
- DO NOT SCALE DRAWINGS. CONTRACTOR SHALL BE RESPONSIBLE TO VERIFY DIMENSIONS ON SITE.
- ALL WORK SHALL BE IN ACCORDANCE WITH THE ONTARIO BUILDING CODE AND ALL SUPPLEMENTS AND APPLICABLE MUNICIPAL REGULATIONS.

CLIENT

OTTAWA COMMUNITY
HOUSING
OTTAWA
ONTARIO, CANADA

PROJECT

OCH SOMERSET ST. E

214 SOMERSET ST. E, OTTAWA,
ON.

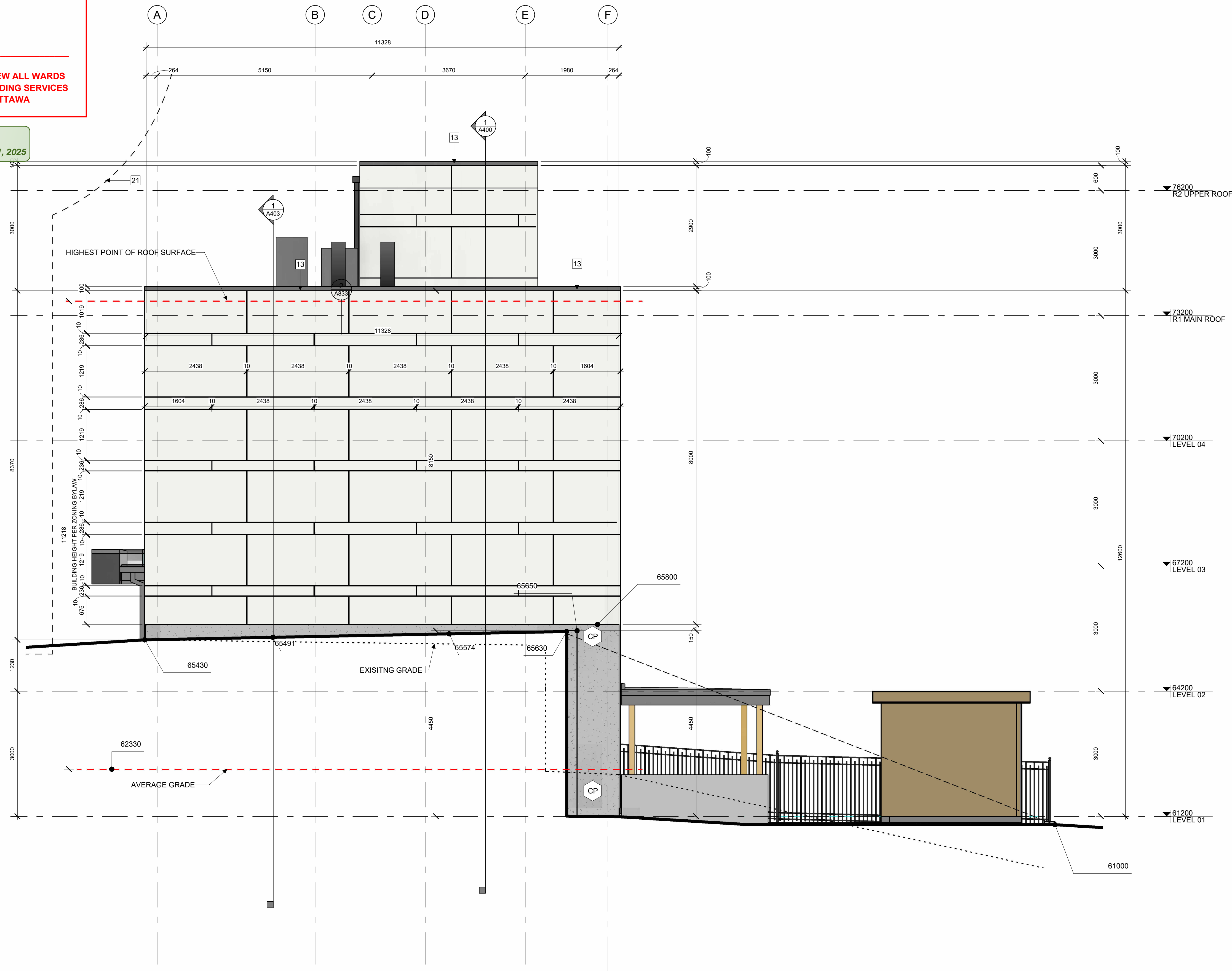
TITLE
EXTERIOR ELEVATION
SOUTH

PROJECT NO: 2022 - 2470
DRAWN: HL, JK
APPROVED: AL, JS
SCALE: 1 : 50
DATE PRINTED: 6/12/2025 12:27:29 PM

REV DRAWING NO.

APPROVED

By Allison Hamlin at 3:22 pm, Jul 31, 2025



1 WEST ELEVATION

A304	1 : 50
------	--------

ELEVATION NOTES:


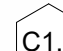
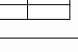


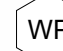
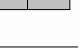

A. CONTRACTOR TO COORDINATE WITH MANUFACTURER'S SPECIFICATIONS AND INSTALLATIONS GUIDELINES FOR ALL MATERIAL SEALING, TRANSITIONS, SEPARATIONS, FLASHING DETAILS, CONNECTIONS, ANCHORAGES, ETC. CONTRACTOR TO PROVIDE DETAIL DRAWINGS OR MOCK-UP FOR ARCHITECT'S REVIEW AND APPROVAL FOR ALL SPECIAL CONDITIONS NOT SHOWN IN THE CONTRACT DOCUMENTS.

ELEVATION KEYNOTES:

- | | |
|----|---|
| 1 | LIGHT WELL |
| 2 | MECHANICAL LOUVRE |
| 3 | 1070 HIGH GLASS GUARD |
| 4 | SHADE STRUCTURE |
| 5 | PREFINISHED METAL CAP FLASHING |
| 6 | ROOFTOP UNIT |
| 7 | EXISTING RETAINING WALL TO REMAIN |
| 8 | ENTRANCE CANOPY |
| 9 | NEW RETAINING WALL |
| 10 | FENCING |
| 11 | CURTAIN WALL |
| 12 | ROOF OVERFLOW SCUPPER |
| 13 | PARAPET CAP C/W NON-CORROSIVE PRE-FINISHED METAL FLASHING (PAINTED) |
| 14 | COLUMN PER STRUCTURAL (PAINTED) |
| 15 | GALVANIZED STEEL BIKE RACKS SURFACE MOUNTED |
| 16 | GAS METER PER MECHANICAL |
| 17 | GALVANIZED STEEL GUTTER ALONG EDGE OF CANOPY SLOPPED TOWARD DOWNSPOUTS. PAINTED |
| 18 | GALVANIZED STEEL DOWNSPOUT, PAINTED |
| 19 | 1070mm GUARD PER LANDSCAPING |
| 20 | GATE C/W LATCH IN GLASS GUARD |
| 21 | REQUIRED SETBACK FROM HYDRO LINES |

ELEVATION LEGEND:

HATCH PATTERNS SHOWN ARE FOR GRAPHIC PURPOSES ONLY AND SHOULD BE COORDINATED WITH ACTUAL SPECIFIED MATERIALS.

HATCH	SYMBOL	DESCRIPTION
		FIBRECEMENT CLADDING MANUFACTURER: CEMFORT COLOUR: CHANTILLY LACE - BM OC-65
		WOOD VENEER PHENOLIC CLADDING MANUFACTURER: PARKLEX PRODEMA COLOUR: MUSTARD - NATURCLAD-B SIZE : 188 MM SIDING
		FOUNDATION WALL FINISH TBD
		REQUIRED HYDRO CLEARANCE
		EXISTING GRADE, SHOWN APPROXIMATELY BASED ON SURVEY INTERPOLATION.

AVERAGE GRADE LEVEL CALCULATION

ELEVATION	FACE AREA	LENGTH
NORTH	109.94m ²	27.286m
EAST	67.61m ²	11.400m
SOUTH	175.75m ²	27.286m
<u>EAST</u>	<u>23.49m²</u>	<u>11.396m</u>
TOTAL	376.79m ²	77.368m

AVERAGE DISTANCE FROM L03 TO GRADE
 $376.79\text{m}^2 / 77.368\text{m} = 4.870\text{m}$
 AVERAGE GRADE ELEVATION 62330
 (67200-4870=62330)

sustainable design · conception écologique

613.564.8118 190 O'Connor Street, Suite 100
www.csv.ca Ottawa, Ontario, K2P 2R3

CIVIL ENGINEER
McIntosh Perry
115 Walgreen Road, RR3, Carp, ON K0A 1L0
613-836-2184
www.mcintoshperry.com

LANDSCAPE ARCHITECT
James B Lennox & Associates
3332 CARLING AVE. OTTAWA,
ONTARIO K2H 5A8
(613) 722-5168

STRUCTURAL ENGINEER
Cunliffe & Associates
200-1550 Carling Ave, Ottawa,
ON
K1Z8S8
613-729-7242

**MECHANICAL+ ELECTRICAL
ENGINEER**
Chorley + Bisset
250 City Centre Ave, Ottawa,
ON
K1R1C7
613-241-0030

URBAN PLANNING
Fotenn Planning and Designing,
420 O'Connor Street, Ottawa,
ON
K2P 1W4
613-730-5709

STAMP

15	2025-06-12	ISSUED FOR SPCA
13	2025-05-23	ISSUED FOR REVIEW
11	2025-03-17	ISSUED FOR 95% OCH REVIEW
7	2025-01-20	ISSUED FOR 60% OCH REVIEW
6	2024-12-23	ISSUED FOR 33% OCH REVIEW
5	2024-12-23	ISSUED FOR SPCA
4	2024-12-20	ISSUED FOR BUILDING PERMIT
REV DATE		ISSUE

NOTES

1. OWNERSHIP OF THE COPYRIGHT OF THE DESIGN AND THE WORKS EXECUTED FROM THE DESIGN REMAINS WITH CSV ARCHITECTS, AND MAY NOT BE REPRODUCED IN ANY FORM WITHOUT THE WRITTEN CONSENT OF CSV ARCHITECTS.
2. THE DRAWINGS, PRESENTATIONS AND SPECIFICATIONS AS INSTRUMENTS OF SERVICE ARE AND SHALL REMAIN THE PROPERTY OF CSV ARCHITECTS. THE CLIENT SHALL RETURN TO THE CLIENT ON OTHER PROJECTS OR ON EXTENSIONS TO THIS PROJECT WITHOUT THE WRITTEN CONSENT OF CSV ARCHITECTS.
3. THIS DRAWING IS TO BE READ IN CONJUNCTION WITH ALL OTHER PROJECT DRAWINGS AND SPECIFICATIONS.
4. DO NOT SCALE DRAWINGS. CONTRACTOR SHALL BE RESPONSIBLE TO VERIFY DIMENSIONS ON SITE.

THIS AGREEMENT IS MADE IN ACCORDANCE WITH THE ONTARIO BUILDING CODE AND ALL SUPPLEMENTS AND APPLICABLE MUNICIPAL REGULATIONS.

CLIENT

OTTAWA COMMUNITY HOUSING

OTTAWA
ONTARIO, CANADA

PROJECT

OCH SOMERSET ST. E

214 SOMERSET ST. E, OTTAWA,
ON.

TITLE

EXTERIOR ELEVATION WEST

PROJECT NO: 2022 - 2470
DRAWN: HL, IK
APPROVED: AL, JS
SCALE: 1 : 50
DATE PRINTED: 6/12/2025 12:27:35 PM

REV DRAWING NO.