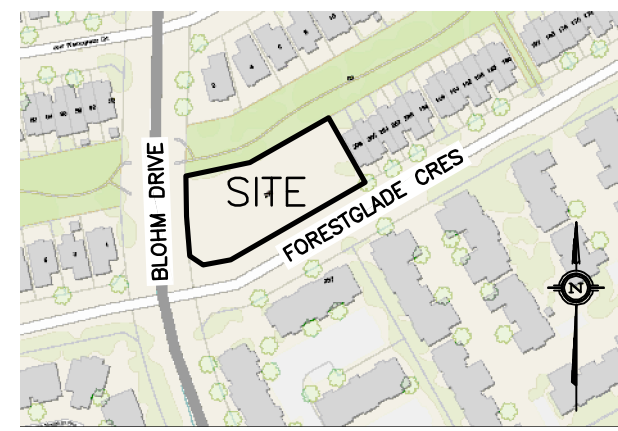


APPROVED
By Sole Soyak at 6:44 pm, Jul 30, 2025

SOLE SOYAK
PLANNER II
PLANNING, DEVELOPMENT AND BUILDING SERVICES
DEPARTMENT, CITY OF OTTAWA

| DIAMETER/MATERIAL: 150mm/PVC DR18 | | | | | | |
|--|---|-----------------|--------------------------------------|------------------------|---|--|
| STATION | DESCRIPTION | GRADE ELEVATION | TOP OF PIPE | DEPTH OF COVER | NOTES | |
| 0+00.0 | 300mm x 150mm TEE CONNECTION IN 300mm MUNICIPAL WATERMAIN TO CITY OF OTTAWA STANDARDS | ±83.18 | ±80.86 | ±2.32 | START OF 50mm THICK INSULATION AS PER DETAIL ON C-5 | |
| 0+03.2 | — | ±83.26 | 80.86 | ±2.40 | CROSSING 250 SAN TOP 78.91 WM U/S 80.71 – 1800mm CLEARANCE (MIN. 250mm REQ'D) | |
| 0+04.9 | — | ±83.21 | 80.86 | ±2.35 | CROSSING 750 ST TOP 80.04 WM U/S 80.71 – 670mm CLEARANCE (MIN. 250mm REQ'D) | |
| 0+07.5 | — | ±83.11 | 80.86 | ±2.25 | BOTTOM OF CURB | |
| 0+13.1 | 150mm VALVE & VALVE BOX TO CITY OF OTTAWA STANDARDS | 83.27 | 80.86 | 2.41 | END OF 50mm THICK INSULATION AS PER DETAIL ON C-5 ON PROPERTY LINE | |
| 0+14.1 | 22.5' VERTICAL BEND DOWN TO CITY OF OTTAWA STANDARDS | 83.26 | 80.86 | 2.40 | — | |
| 0+15.4 | 22.5' VERTICAL BEND UP TO CITY OF OTTAWA STANDARDS | 83.25 | 80.32 | 2.93 | — | |
| 0+15.9 | — | 83.24 | 80.32 | 2.92 | START OF CROSSING ELECTRICAL DUCT U/S 82.00 WM TOP 80.32 – 1680mm CLEARANCE | |
| 0+16.6 | — | 83.24 | 80.32 | 2.92 | END OF CROSSING ELECTRICAL DUCT U/S 82.00 WM TOP 80.32 – 1680mm CLEARANCE | |
| 0+18.0 | — | 83.25 | 80.32 | 2.93 | CROSSING 250 ST INV 80.82 WM TOP 80.32 – 500mm CLEARANCE (MIN. 500mm REQ'D) | |
| 0+19.3 | 22.5' VERTICAL BEND UP TO CITY OF OTTAWA STANDARDS | 83.30 | 80.32 | 2.98 | — | |
| 0+20.6 | 22.5' VERTICAL BEND DOWN TO CITY OF OTTAWA STANDARDS | 83.31 | 80.85 | 2.46 | — | |
| 0+28.9 | 45° HORIZONTAL BEND TO CITY OF OTTAWA STANDARDS | 83.25 | 80.85 | 2.40 | — | |
| 0+37.2 | 45° HORIZONTAL BEND TO CITY OF OTTAWA STANDARDS | 83.34 | 80.94 | 2.40 | — | |
| 0+37.6 | — | 83.34 | 80.94 | 2.40 | BOTTOM OF CURB | |
| 0+39.4 | — | 83.42 | 80.94 | 2.48 | ENTRY INTO BUILDING | |
| CATCH BASIN & MANHOLE SCHEDULE | | | | | | |
| (SUBMIT SHOP DRAWINGS OF ALL CATCH BASINS & MANHOLES TO ENGINEER FOR APPROVAL) | | | | | | |
| REF | TOP | SIZE | TYPE | INVERT AT INLET | INVERT AT OUTLET | NOTES |
| STORM SEWER | | | | | | |
| B/MH-1 | 82.97 | 1200mm | PRECAST CONCRETE CATCH-BASIN/MANHOLE | — | 80.72 | TO OPSD 701.010 & CITY OF OTTAWA STANDARDS – FRAME & COVER TO CITY OF OTTAWA DRAWING No. S25 & S28.1 OR OPSD 401.010 |
| B/MH-2 | 82.94 | 1200mm | PRECAST CONCRETE CATCH-BASIN/MANHOLE | 80.59(N) | 80.59(E) | TO OPSD 701.010 & CITY OF OTTAWA STANDARDS – FRAME & COVER TO CITY OF OTTAWA DRAWING No. S25 & S28.1 OR OPSD 401.010 |
| B/MH-3 | 82.97 | 1200mm | PRECAST CONCRETE CATCH-BASIN/MANHOLE | 80.54(W) | 80.54(NE) | TO OPSD 701.010 & CITY OF OTTAWA STANDARDS – FRAME & COVER TO CITY OF OTTAWA DRAWING No. S25 & S28.1 OR OPSD 401.010 |
| CB-4 | 83.24 | 600mm x 600mm | PRECAST CONCRETE CATCH-BASIN | — | 80.99 | TO OPSD 705.010 & CITY OF OTTAWA STANDARDS – FRAME & COVER TO CITY OF OTTAWA DRAWING No. S19 |
| B/MH-5 | 83.16 | 1200mm | PRECAST CONCRETE CATCH-BASIN/MANHOLE | 80.90(W) | 80.90(SE) | TO OPSD 701.010 & CITY OF OTTAWA STANDARDS – FRAME & COVER TO CITY OF OTTAWA DRAWING No. S25 & S28.1 OR OPSD 401.010 |
| B/MH-6 | 83.18 | 1200mm | PRECAST CONCRETE CATCH-BASIN/MANHOLE | 80.84(NW) | 80.84(SW) | TO OPSD 701.010 & CITY OF OTTAWA STANDARDS – FRAME & COVER TO CITY OF OTTAWA DRAWING No. S25 & S28.1 OR OPSD 401.010 |
| B/MH-7 | 83.08 | 1200mm | PRECAST CONCRETE CATCH-BASIN/MANHOLE | 80.72(NE) 80.41(SW) | 80.41(SE) | TO OPSD 701.010 & CITY OF OTTAWA STANDARDS – FRAME & COVER TO CITY OF OTTAWA DRAWING No. S25 & S28.1 OR OPSD 401.010 INSTALL ICD IN OUTLET PIPE |
| SANITARY SEWER | | | | | | |
| 4H-SA-1 | 83.30 | 1200mm | PRECAST CONCRETE MANHOLE | 81.83(NW) | 81.73(SE) | TO OPSD 701.010 & CITY OF OTTAWA STANDARDS – FRAME & COVER TO CITY OF OTTAWA DRAWING No. S25 & S24 OR OPSD 401.010 |

KEY PLAN

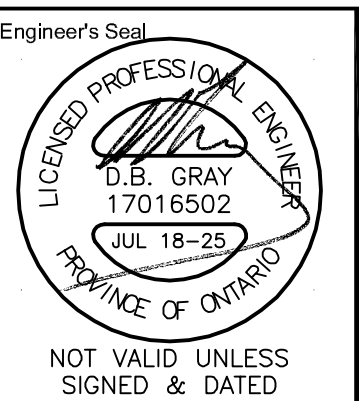


| | | |
|-----|-----------|---|
| | | |
| | | |
| | | |
| | | |
| | | |
| | | |
| 5 | JUL 18-25 | RE-ISSUED FOR SITE PLAN CONTROL & ISSUED FOR TENDER |
| 4 | JUN 26-25 | ISSUED FOR BUILDING PERMIT |
| 3 | APR 4-25 | ISSUED FOR SITE PLAN CONTROL |
| 2 | APR 2-25 | ISSUED FOR COORDINATION |
| 1 | FEB 21-25 | ISSUED FOR CLASS B COSTING |
| No. | DATE | REVISION |

D. B. GRAY ENGINEERING INC.
Stormwater Management - Grading & Drainage - Storm & Sanitary Sewers - Watermain
700 Long Point Circle
Ottawa, Ontario
613-425-8044
d.gray@dbgrayengineering.com

Project
**PROPOSED 3-STOREY
OAC WOMEN'S SHELTER
250 FORESTGLADE
CRESCENT
OTTAWA, ONTARIO**

Drawing Title
DETAILS



Drawn D.B.G.
H. Scale 1:200
V. Scale
Date FEB 14-25
Job No. 24053

Drawing No.
**C-5
of 7**